

NETWORK VIDEO RECORDER

QUICK INSTALLATION GUIDE

Electrical safety

All installation and operation should conform to your local electrical safety codes. We assume no liability or responsibility for any fires or electrical shock caused by improper handling or installation.

Transportation security

Heavy stress, violent vibration or water splash should be avoided during transportation, storage and installation.

Installation

Keep upright. Handle with care.

Do not apply power to the NVR before completing installation.

Do not place objects on top of the NVR

Qualified engineers needed

All examination and repair work should be done by qualified service engineers.

We are not liable for any problems caused by unauthorised modifications or attempted repair.

Environment

The NVR should be installed in a cool, dry place away from direct sunlight and inflammable or explosive substances, etc.

This product should be transported, stored and operated in the specified environments.

Accessories

Be sure to use all the accessories available in the package.

Before installation, please open the package and check all the components are included.

Contact your local retailer if something is broken or missing in your package.

Lithium battery

Improper battery use may result in fire, explosion, or personal injury.

When replacing the battery, please make sure you use the same model.

1 Declaration

Please prevail in kind. The manual is for reference only.

This manual may contain inaccurate data or printing error.

The products described in this manual may be updated at any time.

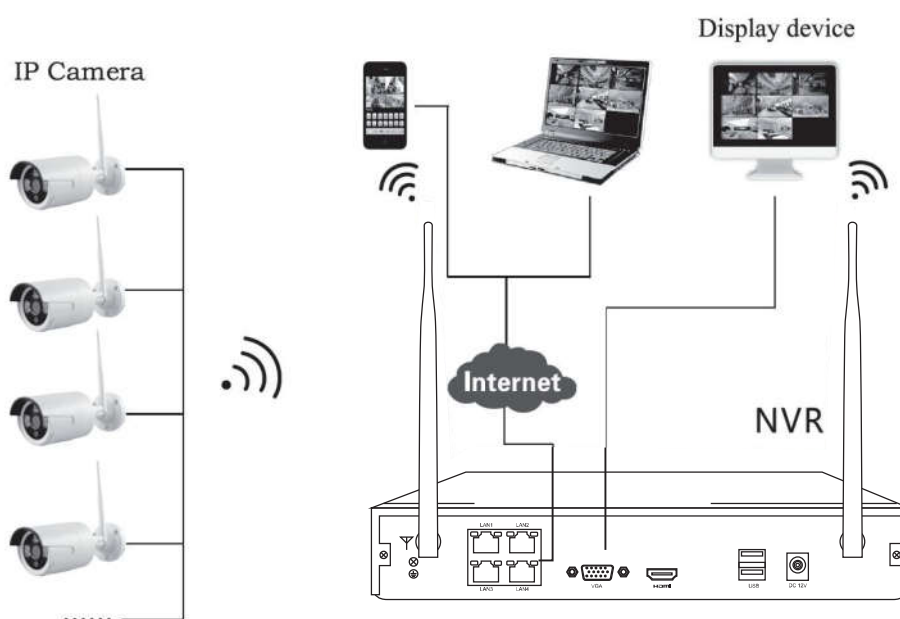
Screenshots of the manual is not in a machine and only for display.

If in doubt, obtaining a copy of the latest procedure or the additional document, please contact with the company's after-sales department.

2 Product Introduction

This series NVR is a high performance network video recorder, combined with H.264 video compression, high-capacity hard disk storage, TCP / IP transmission, embedded Linux operating system and a variety of other advanced technologies in the electronic information industry, all those ensure that a high-quality, low bit rate video storage characteristics, and good system stability.

2.1 Installation diagram



2.2 Antenna location



correct method

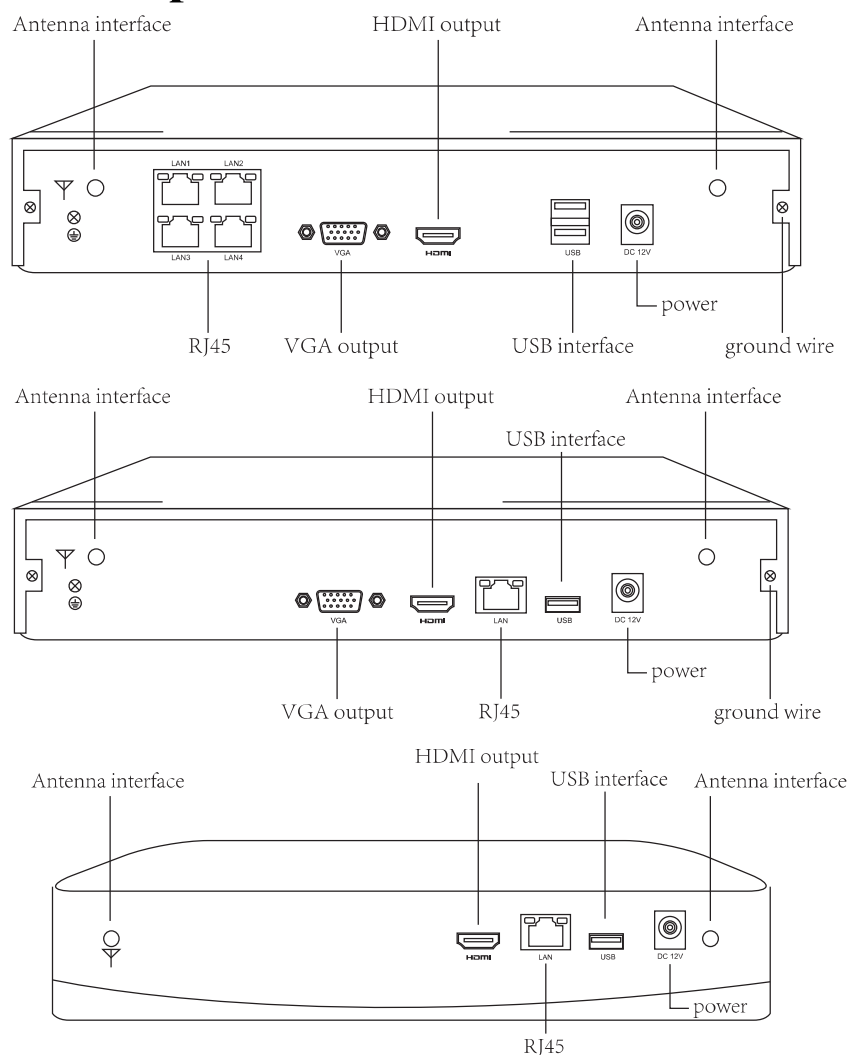


fault method

The signal coverage of Antenna is similar to a round circle. Antenna located in center of the round circle, signal of surrounding is much stronger, but much

weaker if antenna endpoints backoff direction. And in order to guarantee the video quality, IPC antenna should try to keep in parallel or tangent with NVR antenna.

2.3 Panel Description



3 Hard Disk Installation

Before you start:

Disconnect the power from the NVR before installing a hard disk drive (HDD). A factory recommended HDD should be used for this installation.

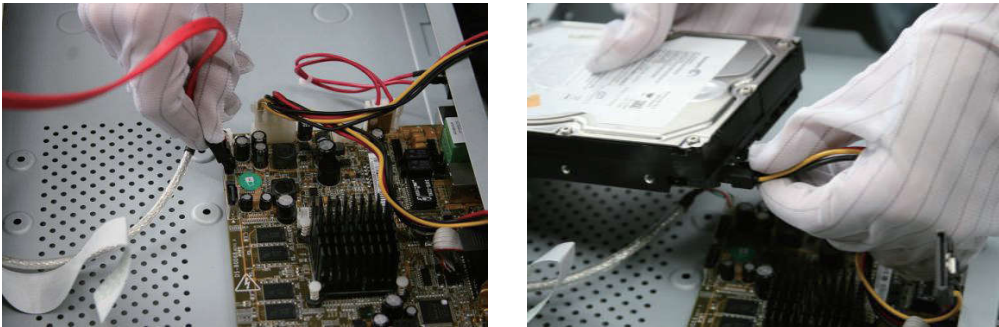
Tools Required: Screwdriver.

Steps (for example):

Step 1: Remove the cover from the NVR by unfastening the screws on the rear and side panel.



Step 2: Connect one end of the data cable to the motherboard of NVR and the other end to the HDD.



Step 3: Connect the power cable to the HDD.



Step 4: Place the HDD on the bottom of the device and then fasten the screws on the bottom to fix the HDD.

The form is for reference. Available time of HDD is based on access channels and actual streams.

Test passed the full range of Western Digital, Seagate SATA HDD, recommend the use of AV-GP series SATA HDD.

Note: Please use the recommended HDD that is compatible with the NVR.

4 Basic Operations Guide

4.1 Power On

Install the NVR correctly (as above) and then connect the power. The NVR LED should light up and the NVR will boot automatically.

If your hard drive is not properly connected, the following message will appear on your screen.



4.2 Power Off (Shutdown)

Right mouse click -[Exit System]-[Shutdown].



Note: Only change or attempt to reconnect the hard disk drive after shutting down the NVR.

4.3 Restart

Right mouse click -[Exit System]-[Reboot].



4.4 Power recovery

Reboot after an outage or forceful shutdown, NVR will save the record before outage and return to the normal operation mode.

4.5 Setup Wizard

Right mouse click - [Setup Wizard].

4.5.1 Help Information



[QR code]: From left to right: Android APP address, iPhone APP address, P2P access address.

[Enable Boot Wizard]: If check, boot wizard after reboot.

[Next]: Enter the next configuration wizard.

[Cancel]: Quit the wizard .

4.5.2 Language and Region



The 'General setup' window displays various system configuration options. It includes dropdown menus for Time Zone (+08:00), Date format (YYYY/MM/DD), Language (English), and KeyPad Type (Type1). It also features input fields for System time (2016/01/01 09:52:28) and Remote ID (255). A 'Sync Time' checkbox is checked and labeled 'Enable'. An 'Apply' button is located next to the system time field. At the bottom, there are 'Previous', 'Next', and 'Cancel' buttons.

[Time Zone]: Select the right Time Zone

[System Time]: Set the right Date and Time

[Sync Time]: Enable Sync Time to update the time when connecting to the Internet

[Date Format]: Select the Date Format

[Language]: Select the language

[KeyPad Type]: Select the KeyPad Type

4.5.3 Fast Network



The 'Fast network' window shows network configuration options. It has two tabs: 'Auto Config' (selected) and 'Manual Config'. Under 'Auto Config', it displays the IP address (192.168.1.134) and a checked 'Cloud(P2P)' option with the code 632982574 (ONLINE). There is a 'Diagnose' button under 'Net Diagnose' and a 'Healthy Network' status indicator. A large QR code is shown on the right, labeled 'Cloud ID'. At the bottom, there are 'Previous', 'Next', and 'Cancel' buttons.

[Network Setup]: Two ways, Auto Config and Manual Config.

[Cloud(P2P)]: The code is used to add the device to the P2P account.

[Net Diagnose]: Diagnose whether the network is normal.

[Network Status]: Indicate whether the network is normal.

4.5.4 HDD Setup



[Format]: Format the disk.

4.6 Add camera

Steps: Right mouse click - **[Video Manage]**.

The cameras offered in the kit have been matched by factory. Power on the IP cameras and NVR, the cameras will connect to the NVR automatically.

Match Code: If you need to add a new Wi-Fi camera. Firstly, take one network cable and connect any NVR LAN port and power on the device. Make sure there is still any channel can add one camera. Adding camera by click Match Code, the camera transmits video images through wireless and NVR, IP is 17.20.14.X

Auto Add(Two functions): (1)If you delete the matched camera without intention, there is no need to Match Code again. Just click Auto Add, then the Wi-Fi cameras deleted will connect to the NVR automatically. (2)If you need to add a new IP camera with network cable. Firstly, take one network cable and connect any NVR LAN port and power on the device. Make sure there is still any channel can add one camera. Adding camera by click Auto Add, the camera transmits video images through the net cable and NVR, IP is 172.25.123.X



4.7 Video detection

Right mouse click - [System setup] - [Record setup] - Choose [Motion] - Click [Copy to] - Click [Apply] to save setting.



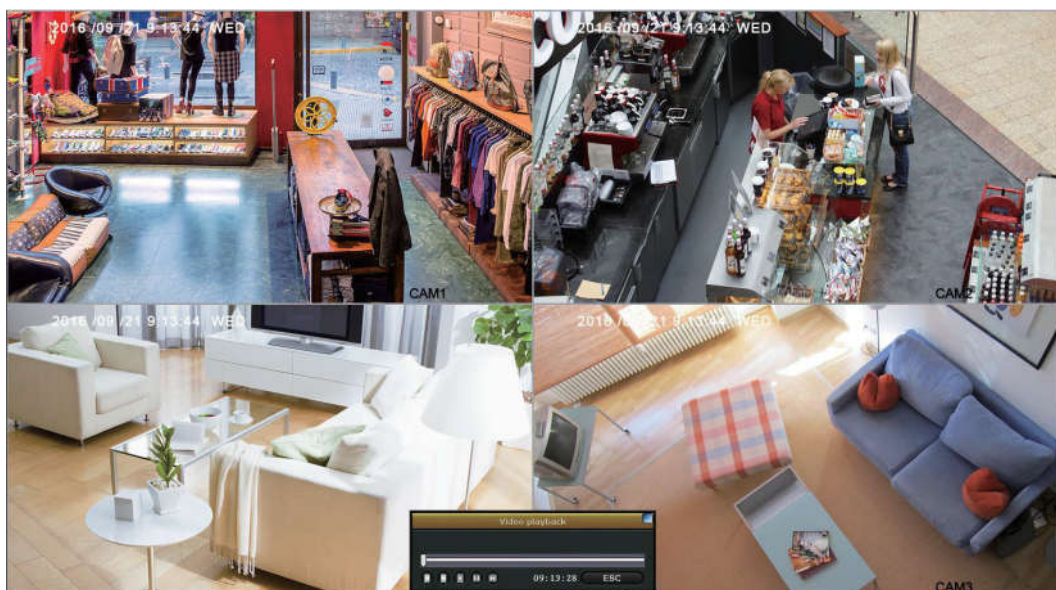
4.8 Video playback

Step: Right click mouse in main menu -Video playback

1: Choose playback time - Choose channel NO.

2: Choose [Manual Search] - Click search, recording will come out, drag time bar - Click [Playback] to start.

Playback icon introduction: ⏮ Playback 1 frame previous, ⏭ Playback 1 frame next, ▶ Play, ⏸ Pause, ⏩ Fast forward x2,x4,x8



4.9 Generate IP-PRO ID

Precondition to generate **IP-PRO** ID is that make sure video recorder is connected with network, and IP address is available right mouse click - **[System setup]** - **[Network setup]**

If user is familiar with LAN, then no need to choose DHCP which help to get IP address automatically. Manually input IP address and DNS address, video recorder will generate ID by network, once generate, it will appear in menu.



5 WEB

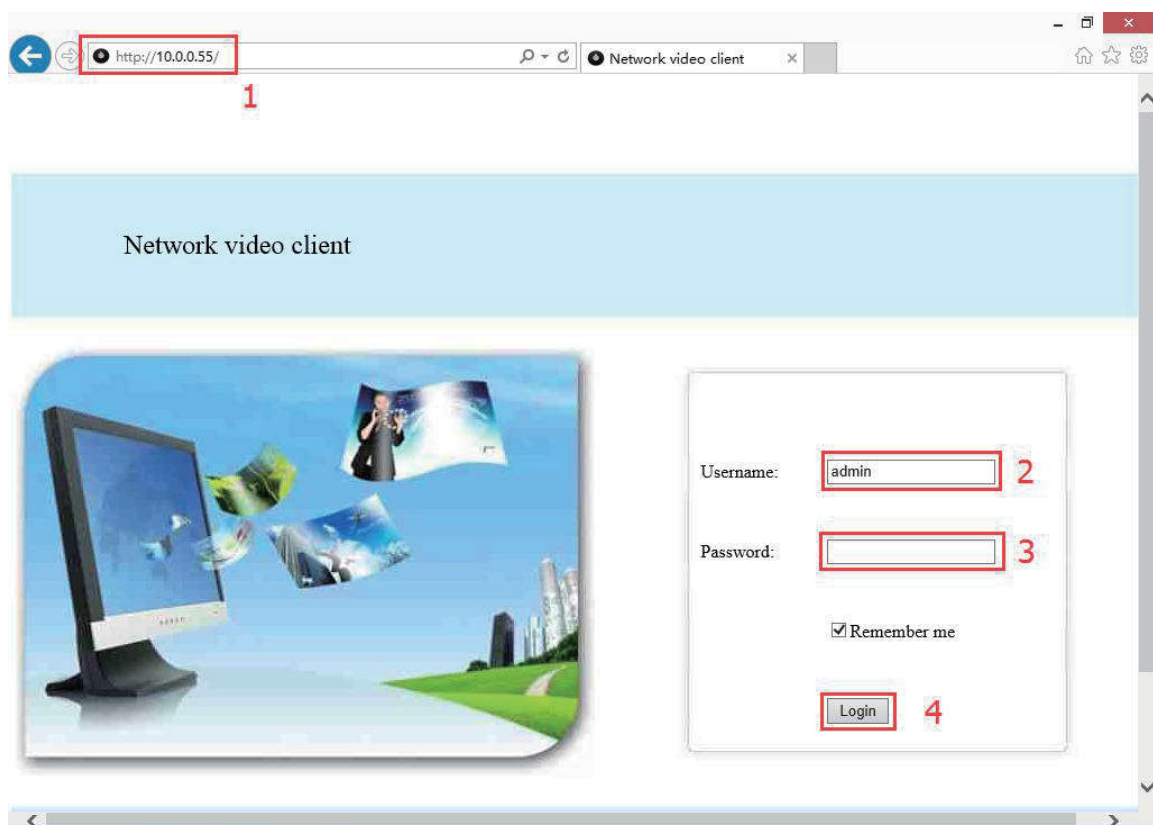
5.1 Access in LAN

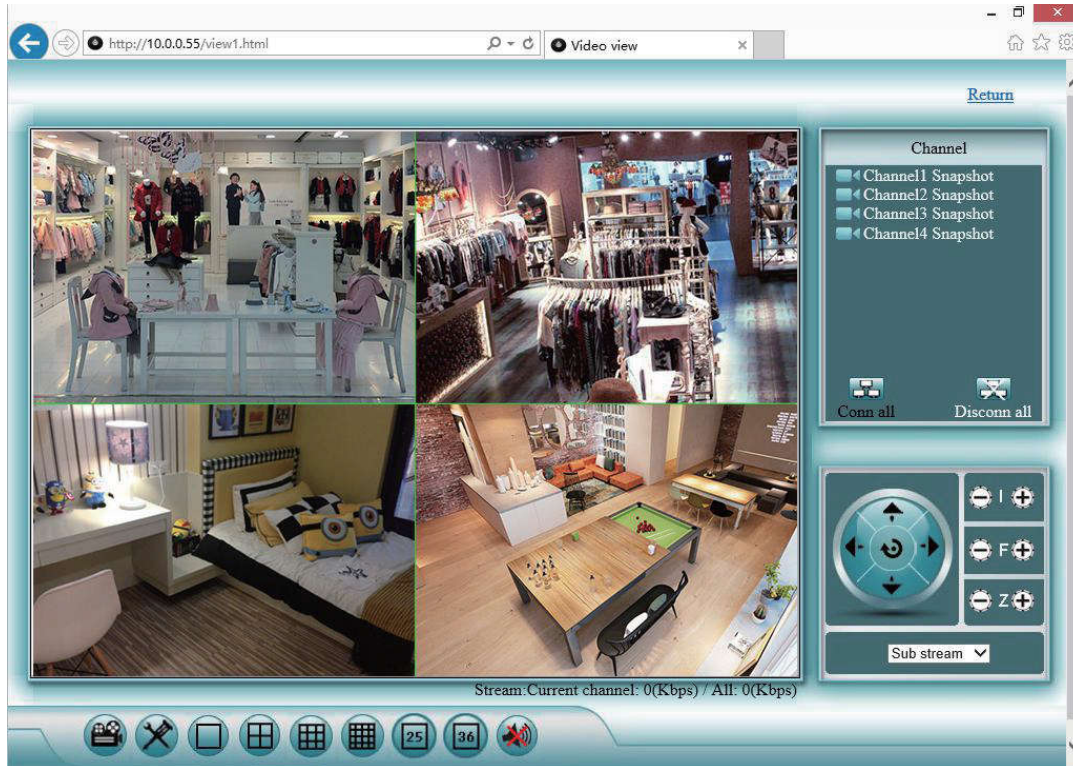
Step 1: Right mouse click - **[System setup]** - **[Network setup]** - Check video recorder IP address.

Step 2: Access by computer in same LAN, input video recorder IP address and port(If port is 80, no need to input)in IE browser or any other browser. Then it will access LAN log in web page, input user name and password, click log in .

Step 3: Once access successfully, can get video.

Tips: Please make sure video recorder and computer in same network .





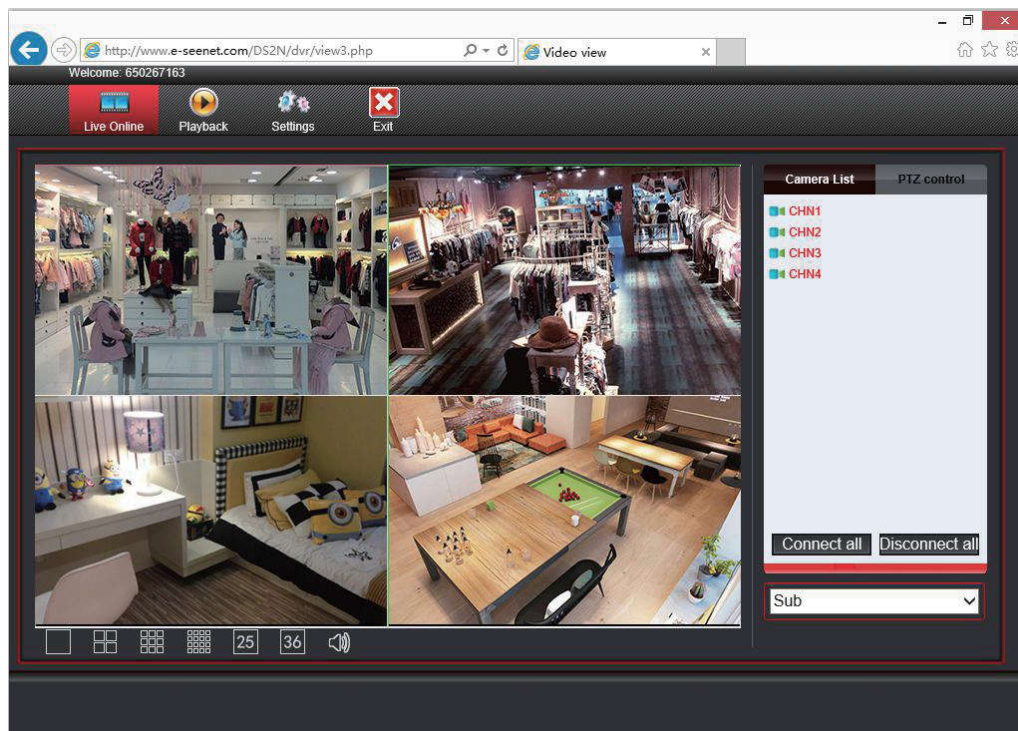
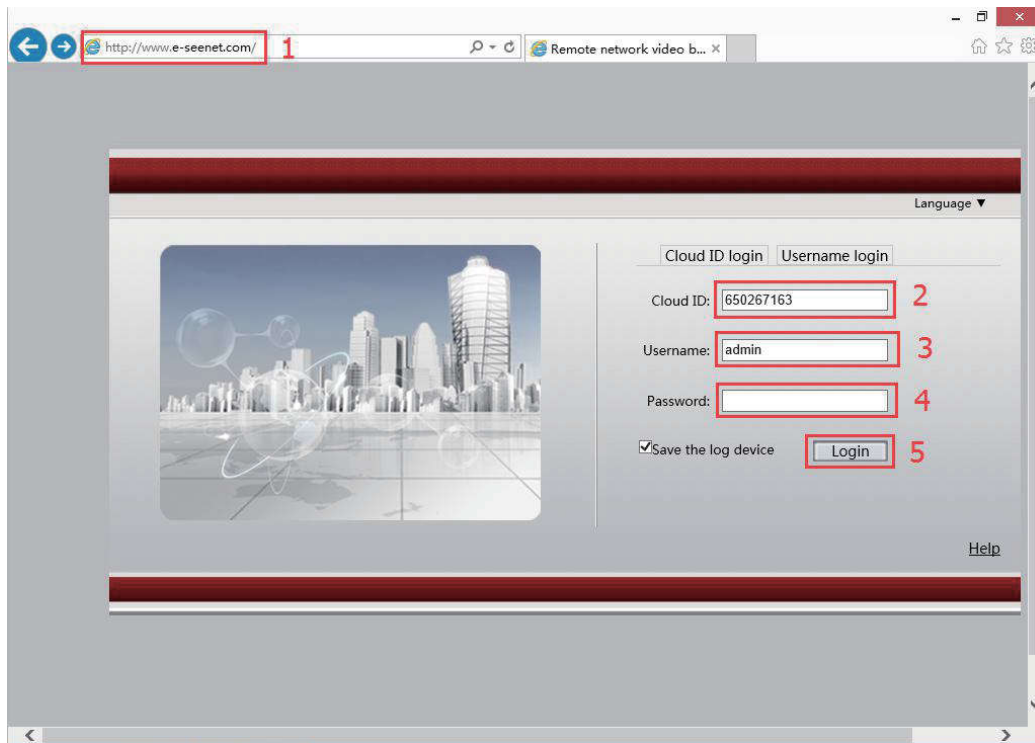
5.2 Access in WAN

Step 1: Right mouse click - [System setup] - [Network setup] - Check Cloud(P2P) ID .

Step 2: Access by computer in WAN, input www.e-seenet.com in IE browser or any other browser. Then it will access log in web page, input ID, user name and password, click log in .

Step 3: Once access successfully, can get video recorder side upload and computer side download speed, each channel need above 30KB





6 Mobile Client Access

a. Search "**IP-PRO**" in Google Play Store or APP Store, or scan the "Android client link/IOS client link" QR Code on the Setup Wizard

b. Download and Install the "**IP-PRO**"

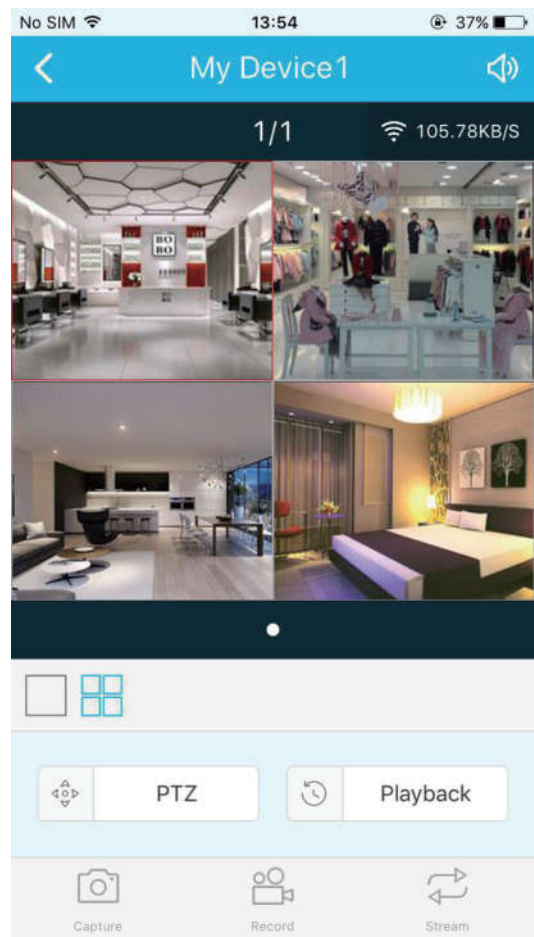
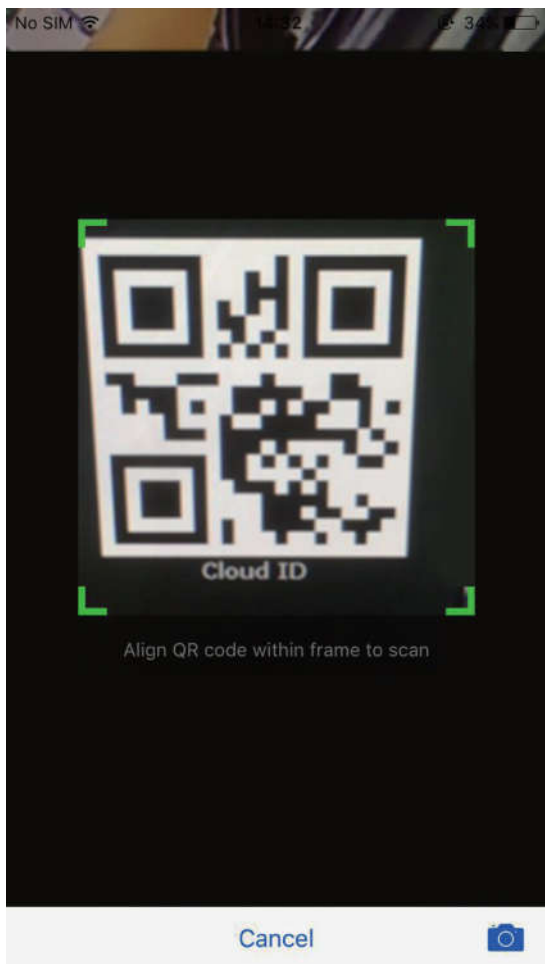
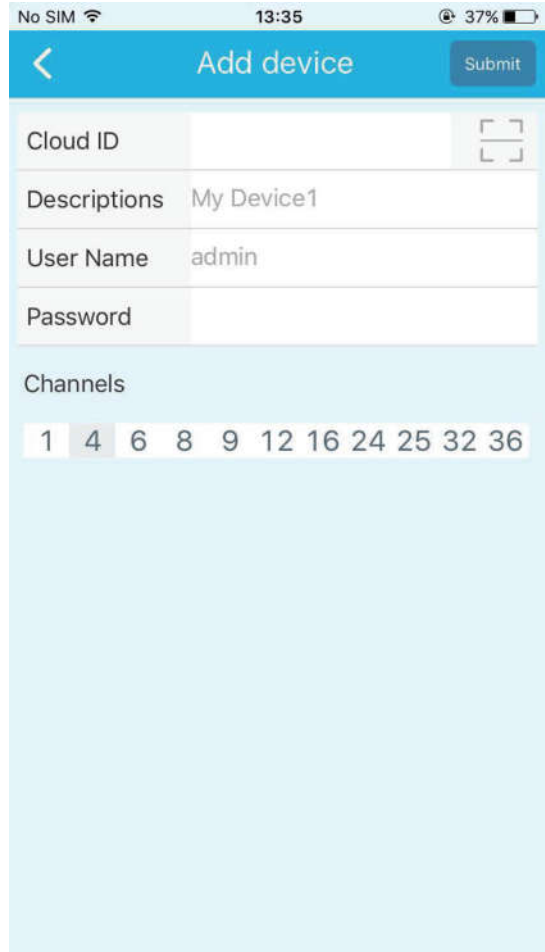
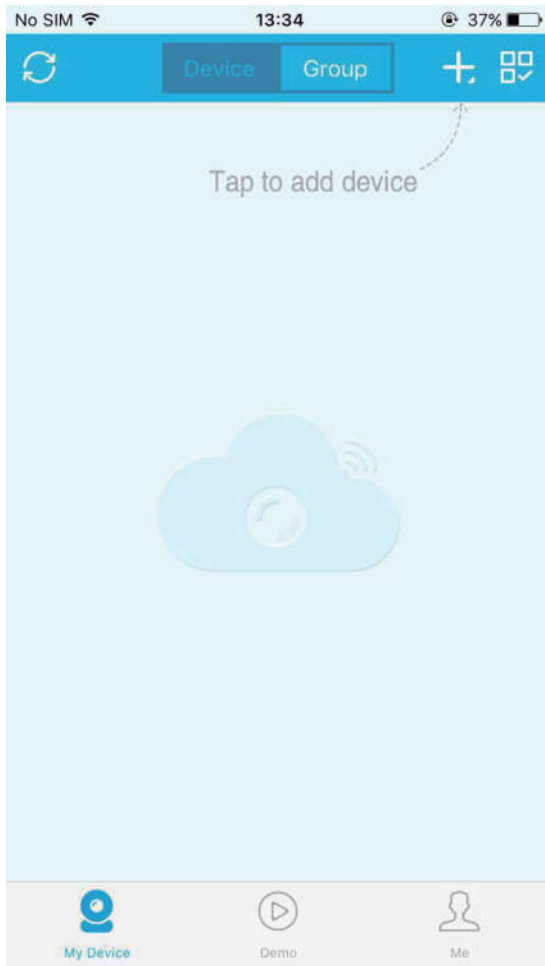
c. Open the APP and add the device (shown as below)

Step 1: Tap "+" to add new device

Step 2: Tap to scan the QR code or enter the Device ID in setup wizard

Step 3: Scan the QR Code in Setup Wizard

Step 4: Live View



7 Software Download And FAQ

If you have problems when using the device or need to download the content contained in the CD, please follow the steps below.

- a. Visit **www.annke.com**
- b. Search the Corresponding model
- c. Click the "Downloads" to choose and get what you want in the list

FCC Statement

This device complies with part 15 of the FCC rules. Operation is subject to the following two conditions: (1) this device may not cause harmful interference, and (2) this device must accept any interference received, including interference that may cause undesired operation.

Changes or modifications not expressly approved by the party responsible for compliance could void the user's authority to operate the equipment.

NOTE: This equipment has been tested and found to comply with the limits for a Class B digital device, pursuant to part 15 of the FCC Rules. These limits are designed to provide reasonable protection against harmful interference in a residential installation. This equipment generates uses and can radiate radio frequency energy and, if not installed and used in accordance with the instructions, may cause harmful interference to radio communications. However, there is no guarantee that interference will not occur in a particular installation. If this equipment does cause harmful interference to radio or television reception, which can be determined by turning the equipment off and on, the user is encouraged to try to correct the interference by one or more of the following measures:

- Reorient or relocate the receiving antenna.
 - Reorient or relocate the receiving antenna.
 - Reorient or relocate the receiving antenna.
 - Consult the dealer or an experienced radio/TV technician for help
- Important Note:

Radiation Exposure Statement

This equipment complies with FCC radiation exposure limits set forth for an uncontrolled environment. This equipment should be installed and operated with minimum distance 20cm between the radiator and your body.

