

WiiM



WiiM Pro Hi-Res Audio Streamer

Model: WiiM Pro
Model number : ASR002

CONTENTS

1. INTRODUCTION	4
2. WHAT'S IN THE BOX	4
3. SPECS	5
4. CONTROLS AND LIGHTS	6
5. HOW TO SET UP	7
5.1 CONNECT THE AUDIO CABLE	7
5.2 SETUP SYSTEM	8
5.3 FILL YOUR HOME WITH SOUND	9
6. VOICE CONTROL	9
6.1 WORKS WITH ALEXA	10
6.2 WORKS WITH Siri	10
6.3 Chromecast built-in	10
7. VOICE CONTROL	11
7.1 Spotify Connect	11
7.2 AirPlay 2	11
7.3 Tidal Connect	12
8. ALL MUSIC IN ONE APP	13
9. MULTIROOM and Stereo Pairing	13
9.1 Linkplay MULTIROOM/STEREO PAIRING	13
9.2 AVS MULTIROOM	14
10. CONNECTING VIA AUX IN	14
11. CONNECTING VIA AUX /SPDIF/BT OUT	15
11.1 CONNECTING VIA SPDIF/AUX OUT	15
11.2 CONNECTING VIA BT OUT (BT sourcing mode)	15
12. STREAM AUDIO WITH BLUETOOTH	15
13. ADVANCED FEATURES	16
13.1 UPDATE THE SPEAKER	16
13.2 ENABLE WIFI SETUP MODE	16
14. FAQ	16
SUPPORT	17

IMPORTANT SAFETY INSTRUCTIONS	17
CE/FCC Statements	18

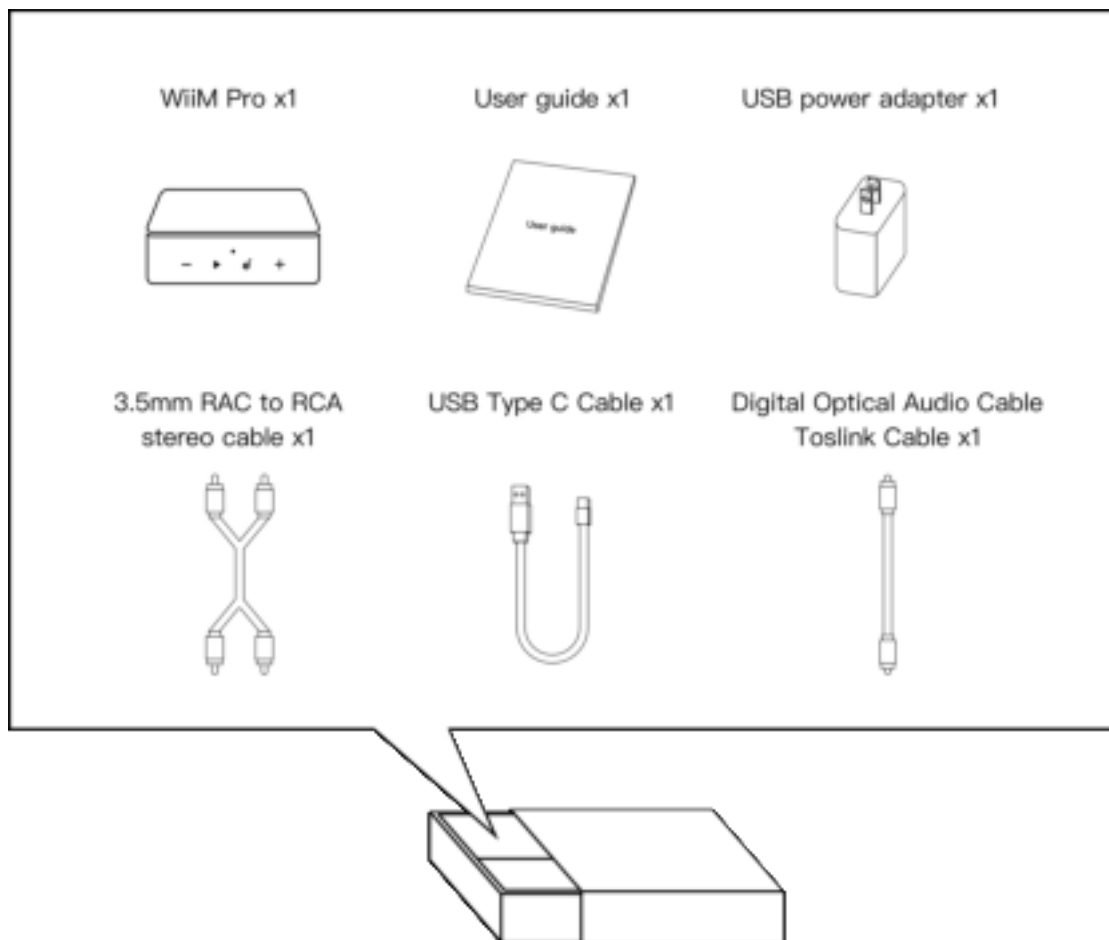
1. INTRODUCTION

Our goal at Wiim is to provide you with the simplest, affordable, Hi-Fi, and lossless audio systems.

With our patented audio streaming solution built into all our high-quality products and App, you will have the ease of playing music throughout your home.

All our products are developed with the finest product design and intuitive user interface.

2. WHAT'S IN THE BOX



3. SPECS

Feature	Description
Audio Sound Quality	Audio Output: bit perfect output, up to 192 kHz, 24-bit
Wireless Network	802.11 b/g/n/ac 2.4 G and 5G dual bands
Bluetooth	Bluetooth 5.0
Audio input	1 x 3.5 mm Analog Aux input, 1Vrms, 48 kHz/16-bit (up to 24-bit)
Audio Output	1x3.5mm analog Aux output, 1x digital optical (SPDIF) output
Line out	Aux in to Aux out : Power Output=2Vrms THD+N Ratio=0.009% SNR=102dB Crosstalk=-106dB Dynamic Range=96dB BT in to Aux out : Power Output=2Vrms THD+N Ratio=0.05% SNR=103dB Crosstalk=-107dB Dynamic Range=121dB
SPDIF	Aux in to SPDIF out : Power Output=-3dBFS THD+N Ratio=0.005% SNR=105dB Crosstalk=-103dB Dynamic Range=97dB BT in to SPDIF out : Power Output=0dBFS THD+N Ratio=0.005% SNR=297dB Crosstalk=-364dB Dynamic Range=213dB
Power Input	USB Type-C, 5V_1A

Audio Codec	MP3, AAC, ALAC, APE, FLAC, WAV, WMA, OGG
Protocol	AirPlay 2, DLNA, Spotify Connect, TIDAL Connect, works with Alexa
Streaming Services	Spotify, Amazon Music, Deezer, Tunein, Tidal, Qobuz, iHeartRadio, Napster, Sound machine etc.
LED	Three color status LED - Red, Green and White
Button	Capacitive touch buttons – Play/Pause, Volume +, Volume -
Weight	1.4 oz (40 g)
Dimension	2.7 x 2.7 x 0.9 in (69 x 69 x 24 mm)

4. CONTROLS AND LIGHTS

BUTTONS AND CONTROLS PANEL

Function	
Play/Pause/Setup	Play/Pause, network pairing and restore to factory setting
Volume Up	Increase volume
Volume Down	Decrease volume
Analog audio in	-
Analog audio out	-
USB Type-C	USB Power Input
Digital Optical audio out	-
1 Amic	Used to auto-measure the audio path latency for AirPlay 2, Amazon Alexa multi-room, and LinkPlay multi-room sync etc.

LIGHTS

State	Color	Flashing/Solid
Boot-up	Yellow	Solid

WIIM PRO USER MANUAL

Oobe/Ready to Setup	White	Solid
BT ready to pairing	White	Solid
Connecting to Wi-Fi	White	Flashing (slow)
Connected to Wi-Fi	White	Solid
BT mode, paired	White	Solid
Aux-in mode	White	Solid
OTA	White	Flashing (slow)
Restore to factory setting	White, Red	Flashing (slow)
No Network	Red	Solid
Faulty Error	Red	Flashing (slow)

NOTES:

WGR: Three color LED, no color mix

W: Wi-Fi (product default mode)

G: Other working mode

R: Error

Three modes: Solid, flashing slow, flashing fast

5. HOW TO SET UP

5.1 CONNECT THE AUDIO CABLE

- ① If you're connecting to an audio/video receiver (AVR) or amplifier
or
- ② If you're connecting to powered speakers
or
- ③ If you're connecting to a computer

Attach the power cord and plug in your WiiM Pro.



5.2 SETUP SYSTEM

- **Wi-Fi SETUP**
Download the WiiM Home App



- Power on speaker, audio/video receiver (AVR) or amplifier, or computer.
- Open the WiiM Home App.
- Click on the device you want to configure.
- Enter the correct password.

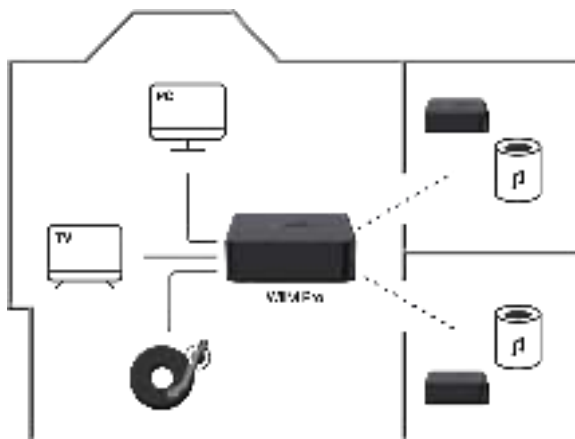
If you are using an **iOS system**, you can also use Apple Wireless Accessory Configuration (WAC) protocol or Home App to setup the device.

- **SETUP with Apple WAC**
 - Power on speaker, audio/video receiver (AVR) or amplifier, or computer.
 - Open iPhone settings and tap your selected device's name on the WAC setup section

- **SETUP with Apple Home App**
 - Tap the Home app located on the home screen of the iOS device.
 - Tap the "+" button located at the top-right corner of the screen.
 - Tap "Add Accessory."
 - Tap "Don't Have a Code or Can't Scan?"
 - Tap your selected device which **MUST** be listed under "Nearby Accessories."

5.3 FILL YOUR HOME WITH SOUND

Stream your favorite music, radio stations through Wi-Fi or Bluetooth. Having multiple WiiM Pro devices, you can stream music throughout the house. Or plug in a stereo component—like an amplified turntable, CD player, or MP3 player—and cast music to multiple WiiM Pro connected speakers at once.



6. VOICE CONTROL

With Voice Control, you can navigate and interact with your device, using your voice to search, play, stop or skip music and more.

When Voice Control is configured, you can voice commands just like you would perform an action by touch.


6.1 WORKS WITH ALEXA

Download Amazon Alexa App and turn on Amazon devices or 3rd party Alexa built-in devices.

- Configure one or more devices.
- If your device is not logged into your Amazon account in the WiiM Home App.
 - Open WiiM Home App, Click "Browse -> Amazon Alexa -> Get Started"
 - Log in to your Amazon account.
 - Open the Amazon Alexa app and log in.
- If your device is logged into your Amazon account in the WiiM Home App.
 - Open the Amazon Alexa app and log in the same Amazon account as the WiiM Home app.
- Click "Devices" at the bottom of the page.
- Click "+" in the top right corner.
- Click "Combine speakers -> Multi-room music"
- Select the configured Echo (or other Amazon devices) and the configured WiiM Pro device.
- Click "Next" and choose the group name (Bedroom or other).
- Amazon Alexa app prompt that the group has been created.
- "Alexa, play some music in the Bedroom," then the Multi-room group playback can be controlled.

6.2 WORKS WITH Siri



- Configure one or more devices.
- Open a music app (like Apple Music) and select a track to play.
- Tap .
- Select your speaker/speakers or Home Pod.
- Say "Hey Siri, stop music/Play music" or touch the top of Home Pod to wake up Siri, say "Stop music/Play music".

6.3 Chromecast built-in



Chromecast built-in (formerly Google Cast) delivers multi-screen TV and audio

experiences with speakers.

Casting is as simple as pressing a button from your favorite app. Watch your favorites on the TV while switching to another app. Listen to your top tunes while taking a phone call or sending a text, all without interrupting what's playing on the speakers.

With Chromecast built-in, your phone is your personalized remote control that you can use to browse, play, pause, and even make playlists.

And you don't have to learn anything new! You can cast from Android tablets and smartphones, iPhones, iPads, Mac, Windows and Chromebooks to your TV or speakers with Chromecast built-in.

7. VOICE CONTROL

7.1 Spotify Connect

Spotify Connect is a way of playing Spotify through your wireless compatible device over wi-fi. That means you can play your favorite tunes anywhere in the house, all without the need for any convoluted Bluetooth pairing between devices every time you want to listen to music.



Use your phone, tablet, or computer as a remote control for Spotify. Go to spotify.com/connect to learn how.

The Spotify

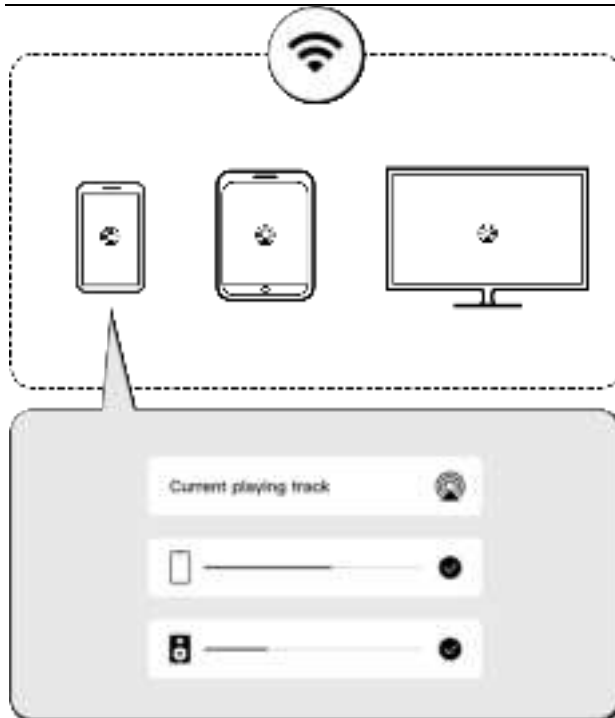
Software is subject to third party licenses found here:

<https://www.spotify.com/connect/third-party-licenses>

7.2 AirPlay 2

The biggest feature of AirPlay 2 is multiroom audio.

It's Apple's first real move into multi-room technology, with AirPlay 2 finally letting you stream music from your iOS device to more than one product.




The WiiM Pro can play AirPlay 2 audio, which allows you to quickly stream audio from your Apple device to the external speaker or multiple speakers.


NOTES:

- To use AirPlay 2, you need an Apple device running iOS 11.4 or later.
- Your Apple device and WiiM Pro must be connected to the same Wi-Fi network.
- For more information about AirPlay 2, visit: <https://www.apple.com/airplay>

STREAM AUDIO FROM THE CONTROL CENTER

1. On your Apple device, open the Control Center.
2. Tap and hold the audio card in the top-right corner of the screen, then tap the AirPlay icon .
3. Select your Wim Mini device.

STREAM AUDIO FROM AN APP

1. Open a music app (like Apple Music) and select a track to play.
2. Tap .
3. Select your WiiM Pro device.

7.3 Tidal Connect

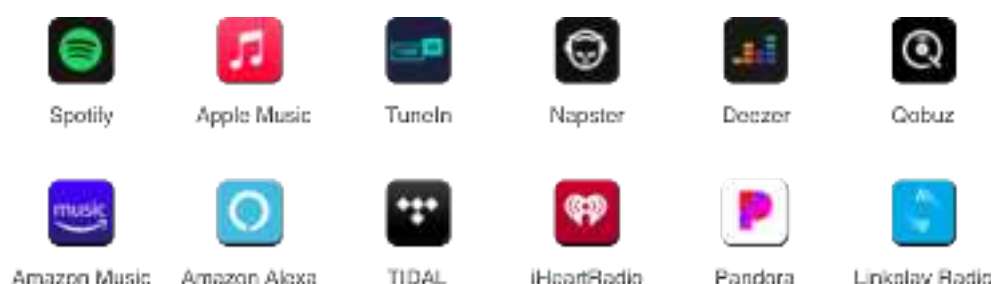
TIDAL is a global music streaming platform bringing fans closer to artists through unique experiences and the highest sound quality. Stream your favorite music seamlessly from

TIDAL App straight to your devices in the highest possible quality.

8. ALL MUSIC IN ONE APP

WiiM Pro learns your habits and provides you with customized service.

We support many popular music streaming services in our companion app and through AVS like Spotify, iHeartRadio, Tidal, Amazon Prime Music, Napster, Sirius XM, Deezer, & more to come.



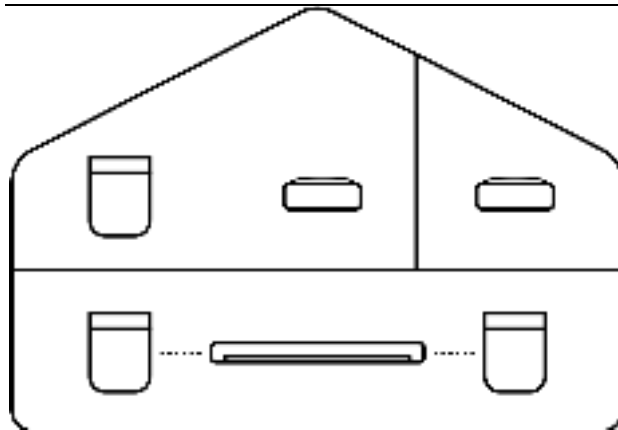
9 MULTIROOM and Stereo Pairing

With the WiiM Pro connected stereo system, it's easy to build your wireless multiroom sound system with other AirPlay 2 speakers or Amazon Echo. You can create more flexible multiroom sound system with multiple WiiM Pros and your existing audio devices. All types of audio input including Wi-Fi, Bluetooth, and Auxiliary can be used as the audio source for the multiroom system.

In addition, you can group two speakers connected with WiiM Pros as a stereo pair for a wider, more immersive sound stage.

Thus, it can work with almost your every music listening options.

9.1 Linkplay MULTIROOM/STEREO PAIRING



- Configure two or more devices.
- Open WiiM Home App.
- Select the device and click the plus sign in the upper right corner“ + ”
- Select the other WiiM Pro, click “Done”
- Click the LR icon“ L ” and set the device to "L/R/LR"
- In the Browse Tap, play “My music” or others.

9.2 AVS MULTIROOM

TIP: Download Amazon Alexa App and get ready with Echo or other Amazon devices.
For detailed steps please refer to 6.1.

10. CONNECTING VIA AUX IN

WiiM Pro can be used as wireless WiFi transmitter that can stream the analog audio input from CD player, recorder or computer to another (or multiple) WiiM Pro connected device.

To set up the WiiM Pro with the Aux input:

1. Plug the 3.5mm cable into the Aux in port on the back of the WiiM Pro.
2. Plug the other end of the cable into the record player.
3. In the WiiM Home app, Go to Browse > Select source on device > Aux in, select the Aux in for audio distribution.
4. Create a multiroom music group with your WiiM Pro. On WiiM Home app, Go to Devices, select the WiiM Pro connected with your Aux-in device. Tap the group button (with + sign in a box) in the top right corner of the device box. Select the WiiM Pro you wish to connect with.

Once completed, the music playing from the device plugged into the WiiM Pro will play

to your multiroom music group.

11. CONNECTING VIA AUX /SPDIF/BT OUT

There are two ways to control your volume. To enable the fixed line-out level, please select it from the device setting on WiiM Home App.


- Control volume from your AVR or amplifier (Fixed volume output)
- Control the volume from WiiM Home App

Note: To achieve bit perfect output, please choose 'fixed volume output' from the device setting.

11.1 CONNECTING VIA SPDIF/AUX OUT

- Depending on the output you prefer to use, plug the SPDIF line /RCA or 3.5 mm (1/8 ") end of the cable into the corresponding output port on the source device or preamplifier.
- Open the WiiM Home App on your iOS or Android device.
- Start playing on the source device.

11.2 CONNECTING VIA BT OUT (BT sourcing mode)

- Open the WiiM Home App on your iOS or Android device.
- In the **Browse**  Tab, switch to Bluetooth mode.
- Connect Bluetooth to an external power amplifier (Support Bluetooth).
- Start playing on the source device.

12. STREAM AUDIO WITH BLUETOOTH

Bluetooth wireless technology lets you stream music from mobile devices such as smartphones, tablets, and laptop computers. Before you can stream music from a device, you must connect your device to the speaker.

13. ADVANCED FEATURES

13.1 UPDATE THE SPEAKER

- The speaker updates automatically when connected to the WiiM Home app and to your Wi-Fi network.
- Upgrade from 2:00-5:00 a.m. During the silent upgrade, there should be no sound and no indication.

13.2 ENABLE WIFI SETUP MODE

Press and hold Play/Pause for 3s to enable WIFI setup mode.

14. FAQ

If you are experiencing problems with the audio streamer, try these solutions first:

- What can I do if I cannot find device?
Ensure that the network is available and the device is powered on properly.
Restart the device.
Check the LED on the device is solid white.
If not, reconfigure the device to the network.
- What can I do if my device has no sound?
Ensure that the power amplifier is powered on normally.
Ensure that the 3.5mm (1/8 ") end of the cable and optical fiber line is working properly and the interface is not loose.
Make sure the amplifier and equipment are at a normal audible volume.
- What can I do if my device cannot power on normally?
Check the device status and ensure that the power cable works properly.

(More FAQs can be found on our website: <https://wiim.freshdesk.com/a/solutions>)

SUPPORT

If you are unable to resolve your issue, please check our support and send us an email about your issues as below:

WiiM Pro App: Settings/FAQ

Website: wiimhome.com/FAQ

Email: support@Wiimhome.com

Product User Guides: wiimhome.com/guide

RESET THE SPEAKER

Press and hold play/pause for 10s, afterwards you will hear the voice tone and see the light flashing red.

Factory reset clears all source, volume, and network settings from the speaker and returns it back to the original factory settings.

IMPORTANT SAFETY INSTRUCTIONS

IMPORTANT, RETAIN FOR FUTURE REFERENCE: READ CAREFULLY

1. Read these instructions.
2. Keep these instructions.
3. Heed all warnings.
4. Follow all instructions.
5. Do not use this apparatus near water.
6. Clean only with a dry cloth.
7. Do not block any ventilation openings. Install in accordance with the manufacturer's instructions.
8. Do not install near any heat sources such as radiators, heat registers, stoves, or other apparatus (including amplifiers) that produce heat.
9. Protect the power cord from being walked on or pinched particularly at plugs, convenience receptacles, and the point where they exit from the apparatus.
10. Only use attachments/accessories specified by the manufacturer.
11. Unplug this apparatus during lightning storms or when unused for long periods of time.
12. Refer all servicing to qualified personnel. Servicing is required when the apparatus has been damaged in any way, such as external power supply, power-supply cord or plug is damaged, liquid has been spilled or objects have fallen into the apparatus, the apparatus has been exposed to rain or moisture, does not operate normally, or has been dropped
13. To reduce the risk of fire or electrical shock, do NOT expose this product to rain, liquids or moisture.
14. Do NOT expose this product to dripping or splashing, and do not place objects filled with liquids, such as vases, on or near the product.
15. Keep the product away from fire and heat sources. Do NOT place naked flame sources, such as lighted candles, on or near the product.
16. Do NOT make unauthorized alterations to this product.
17. Do NOT use in vehicles or boats.
18. Use this product only with the power supply provided.
19. Where the mains plug or an appliance coupler is used as the disconnect device, the

disconnect device shall remain readily operable.

20. Due to ventilation requirements, does not recommend placing the product in a confined space such as in a wall cavity or in an enclosed cabinet.

21. Contains small parts which may be a choking hazard. Not suitable for children under age 3.

22. This product contains magnetic material. Consult your physician on whether this might affect your implantable medical device.

23. Do not place or install the bracket or product near any heat sources, such as fireplaces, radiators, heat registers or other apparatus (including amplifiers) that produce heat.

CE/FCC Statements

RF Exposure Information: To maintain compliance with FCC RF exposure requirements, use the product that maintain a 20cm separation distance between the user's body and the host. MPE limit for RF exposure at prediction frequency and satisfy RF exposure compliance.

FCC Statement:

This device complies with part 15 of the FCC rules. Operation is subject to the following two conditions:

- (1) this device may not cause harmful interference, and
- (2) this device must accept any interference received, including interference that may cause undesired operation.

FCC ID 2ANOG-ASR002

NOTE: The manufacturer is not responsible for any radio or TV interference caused by unauthorized modifications or changes to this equipment. Such modifications or changes could void the user's authority to operate the equipment.

NOTE: This equipment has been tested and found to comply with the limits for a Class B digital device, pursuant to part 15 of the FCC Rules. These limits are designed to provide reasonable protection against harmful interference in a residential installation. This equipment generates uses and can radiate radio frequency energy and, if not installed and used in accordance with the instructions, may cause harmful interference to radio communications. However, there is no guarantee that interference will not occur in a particular installation. If this equipment does cause harmful interference to radio or television reception, which can be determined by turning the equipment off and on, the user is encouraged to try to correct the interference by one or more of the following measures:

- Reorient or relocate the receiving antenna.
- Increase the separation between the equipment and receiver.
- Connect the equipment into an outlet on a circuit different from that to which the receiver is connected.
- Consult the dealer or an experienced radio/TV technician for help.

CE Statement:

RF exposure information: The Maximum Permissible Exposure (MPE) level has been calculated based on a distance of $d=20$ cm between the device and the human body. To maintain compliance with RF exposure requirement, use product that maintain a 20cm distance between the device and human body.

WIIM PRO USER MANUAL

Do not use the device in the environment at too high or too low temperature, never expose the device under strong sunshine or too wet environment. The suitable temperature for the product and accessories is 0°C-40°C.

Operating frequency range and maximum transmit power

Bluetooth: 2402MHz ~ 2480MHz, <9.11 dBm EIRP

WLAN 2.4GHz: 2412MHz ~ 2472MHz, <20 dBm EIRP

WLAN 5GHz: 5150MHz ~ 5825MHz, <20 dBm EIRP

The device for operation in the band 5150~5350 MHz is only for indoor use to reduce the potential for harmful interference to co-channel mobile satellite systems.

	AT	BE	BG	HR	CY	CZ	DK
	EE	FI	FR	DE	EL	HU	IE
	IT	LV	LT	LU	MT	NL	PL
	PT	RO	SK	SI	ES	SE	UK
	CH	IS	LI	NO	TR		

This product can be used across EU member states.

EU Regulatory Conformance

Hereby, Linkplay Technology Inc. Corporation declares that this device is in compliance with the essential requirements and other relevant provisions of Directive 2014/53/EU.

