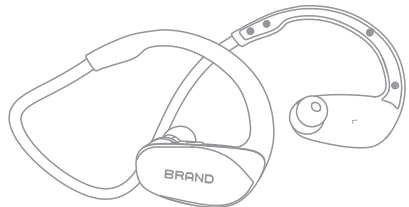


# Bluetooth 4.0 Sports Headset KBJ-152N

## User's Manual



Thank you for selecting our latest Bluetooth headset, please read this User's Manual carefully before you operate this headset, and please save this Manual for further reference. Before operating, please read all the Safety notice to make sure the safe and appropriate use.



### Safety Notice:

- Please observe the rules of the Country or Region which you are in while driving.
- Do not disassemble or modify the headset at any reason, otherwise, It may damage or burn the headset.
- If there is any quality problem, please send the headset to authorized service center for repairing.
- Please keep the equipment along with all the accessories out of the reach of children and pets. It will cause suffocation and serious injury.
- Do not put the device under the environment which the temperature is too low or too high ( Below 0℃ or over 45℃).
- Extreme temperatures will cause the device deformation, reduce the charging capacity and shorten the working life.
- Please do not wet the device, for the liquid can cause serious damage to the device. Please do not touch the device by wet hands. It is out of the maintenance range for the damage caused by water.
- Please avoid closing to the eyes of children and pets when using the flash indicator of the device.
- Please do not operate the device in thunderstorm weather.

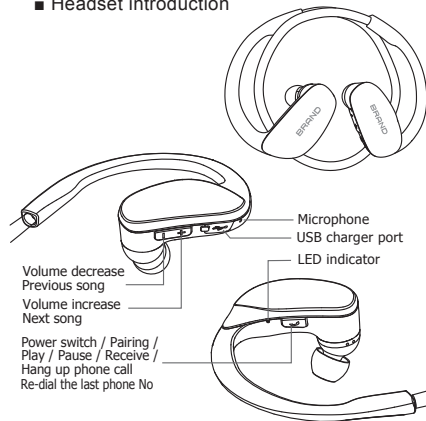
01



It will damage your hearing if you listen with high volume for a long time. It is recommended that only use the lowest volume which is necessary for speaking and listening to music.

## 1. Guide

### ■ Headset introduction



02



## USB Charging Cable:



※ Contents: Bluetooth Headset, USB Charging Cable, S/L Eartips, User's Manual

## 2. Instruction

### ■ Key Function

 Power switch	Switch on: Press 2 seconds to switch on, the blue indicator will be in (voice prompts in English). Press 2.5 seconds, it enters into pairing mode, the red and blue indicators take turns to flash. (voice prompts in English); power will switch off automatically after 5 minutes no devices to connect . Switch off: Press 6 seconds to switch off, the red indicator flashes one time mean the device is switched off (voice prompts in English)
 Receive Hang up phone call Play/Pause	Press "function key" to receive phone call, press it again to end the phone call. Press the key by twice continuously to re-dial the last phone number. Press the key for 2 seconds to reject the phone call. In music mode, press it 1 time to pause, and press it again to play. (when phone call comes, the music will be off. When phone call is off, the music will continue.
+ Next Song Volume Increase	In Music Mode, press it to play previous song. Long press to increase volume all the time.
- Previous song Volume Decrease	In Music Mode, press it to play next song. Long press to decrease volume all the time.

03

## 3. How to connect with two Bluetooth mobile phones:

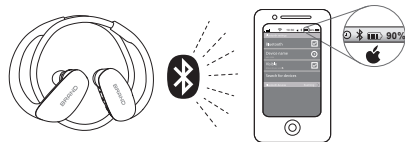
- (1) Turn on the bluetooth function of mobile phone 1.
- (2) Press the " " for 4 seconds of the bluetooth headset, switch on and enter into pairing mode, blue and red indicators take turns to flash, make connection with phone 1.
- (3) press the " " again for 2.5 seconds, the red and blue indicators take turns to flash and searching connections automatically; meanwhile, phone 1 is disconnected.
- (4) Turn on the bluetooth function of the mobile phone 2 and search KBJ-152N from the list, make connection. (Input the password 0000 if needed and the connection will be made).
- (5) Turn off the bluetooth headset and return on, the headset will connect with both mobile phones automatically. The voice "Bluetooth is connected, bluetooth is connected" will appear in English.

※ When the headset is connected with two mobile phones, some functions of the mobile phones cannot work normally.

## ■ Battery power of bluetooth headset displayed on Iphone

※ After connected with Iphone, the battery power of the headset will be displayed on the phone.

04



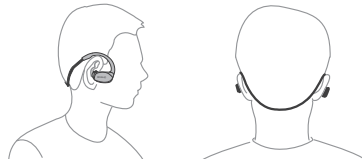
#### 4. Bluetooth Indicator Status

Work Status	Indicator Light Status	Remark
Switch on	Blue indicator flash 2 times	Voice Prompts
Switch off	Red indicator flash 1 time	Voice Prompts
Pairing Mode	Red and blue indicators take turns to flash	Voice Prompts
Connection	Blue indicator will flash 1 time every 6 seconds	Voice Prompts
Phone call	Blue indicator will flash 1 time every 6 seconds	
Play Music	Blue indicator will flash 1 time every 6 seconds	
Battery low warning	Red indicator will flash every 60 second	Voice Prompts
Charging	Red indicator is on all the time when charging; Blue indicator is on instead when charged full	

05

#### 5. Wearing Style:

Put the hook over the ear, and make the eartips into the ear, rotate it to fit the ear canal perfectly.



#### 6. Headset Charging

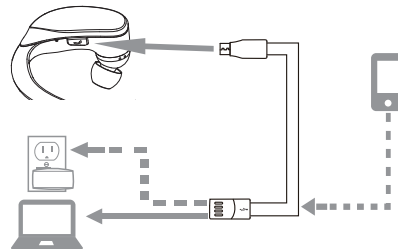
This headset is equipped with built-in non-detachable and rechargeable battery. Please make sure that the battery is charged full for the first time use.

- Connect the charger to the charging port.
- Insert the charger into the standard power outlet. During the charging, indicator will turn to Red. If without charging, please plug out the travel charger first, then connect it again.
- After full charging, red indicator will be off. Please plug out the travel charger from the power outlet and headset.
- It will reduce the battery performance after long time / repeatable charge and dis-charge.

06

- And it is normal phenomenon for all the rechargeable battery. Please do not dial or receive phone call during charging, and please plug out the charger from the headset, then receive the phone call. When the battery is low, the headset will appear the prompt and the red indicator will flash.

※ If the headset turned off due to power failure during phone calls, the call will switch to mobile phone automatically.



07

#### 7. Project Specification and Instruction

- Bluetooth Version : V4.0
- Supported devices: Bluetooth mobile phones, Bluetooth speakers Bluetooth PC and other Bluetooth devices
- Maximum work range: 33 Feet (10 Meters)
- Standby time: 80 Hours
- Talk time: 5 Hours
- Music play: 4 Hours
- Charging time: 2.5 Hours
- Charging Voltage: DC 5V
- Work Voltage: 3.7V
- Frequency Response: 20Hz~20KHz

※ The actual time may vary from mobile phone types and functions.

08

## Bluetooth 4.0 Sports Headset

This device complies with Part 15 of the FCC Rules. Operation is subject to the following two conditions: (1) this device may not cause harmful interference, and (2) this device must accept any interference received, including interference that may cause undesired operation.

Changes or modifications not expressly approved by the party responsible for compliance could void the user's authority to operate the equipment.

NOTE: This equipment has been tested and found to comply with the limits for a Class B digital device, pursuant to Part 15 of the FCC Rules. These limits are designed to provide reasonable protection against harmful interference in a residential installation. This equipment generates, uses instructions, may cause harmful interference to radio communications. However, there is no guarantee that interference will not occur in a particular installation. If this equipment does cause harmful interference to radio or television reception, which can be determined by turning the equipment off and on, the user is encouraged to try to correct the interference by one or more of the following measures:

- Reorient or relocate the receiving antenna.
- Increase the separation between the equipment and receiver.
- Connect the equipment into an outlet on a circuit different from that to which the receiver is connected.
- Consult the dealer or an experienced radio/TV technician for help.