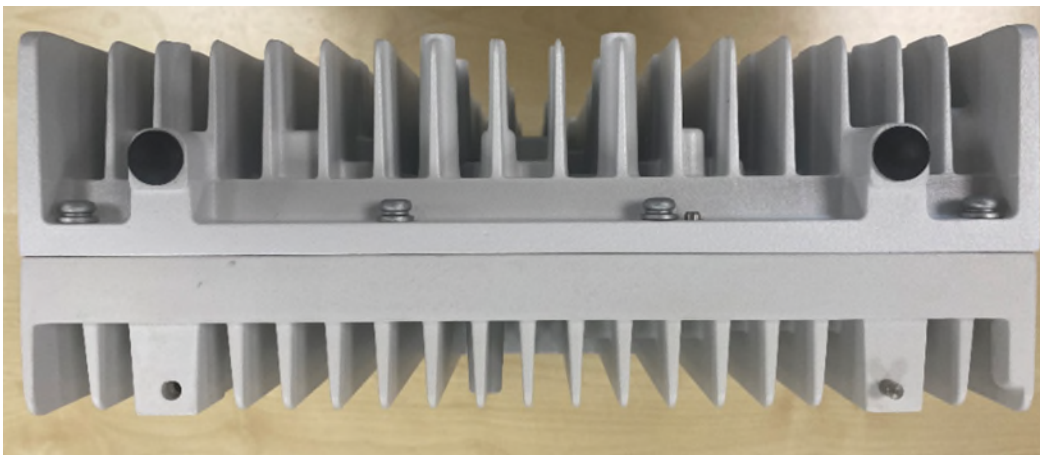


EXHIBIT 10**Section 2.1033 (c)(12) PHOTOGRAPHS OF THE EQUIPMENT**

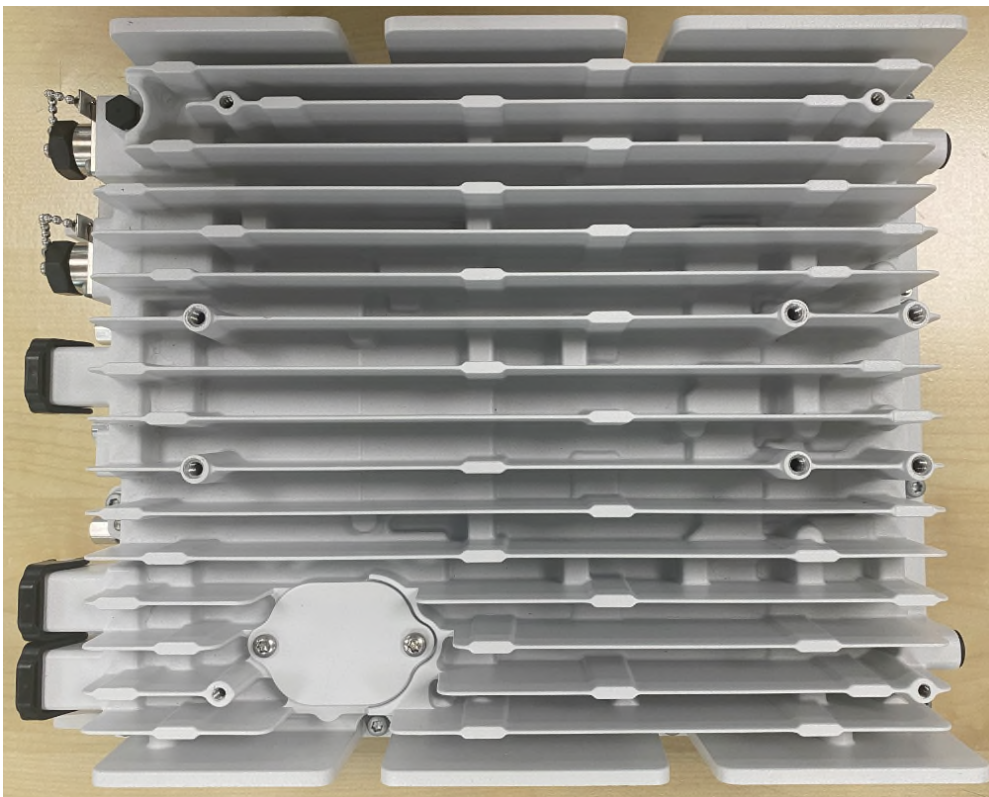
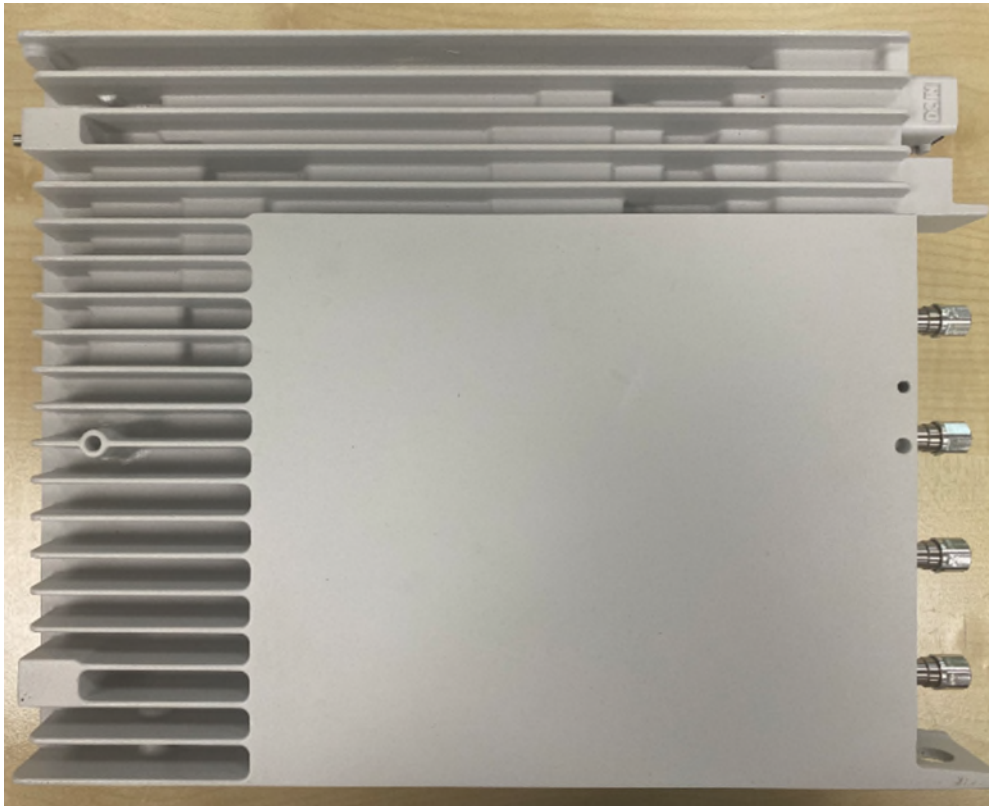
Photographs (8" × 10") of the equipment of sufficient clarity to reveal equipment construction and layout, including meters, if any, and labels for controls and meters and sufficient views of the internal construction to define component placement and chassis assembly. Insofar as these requirements are met by photographs or drawings contained in instruction manuals supplied with the certification request, additional photographs are necessary only to complete the required showing.

Response

The required external photographs of the subject of this application are attached below.

Top and Bottom

Front and Back



Left and Right Sides

