

EXHIBIT 9**INTERNAL PHOTOGRAPHS**

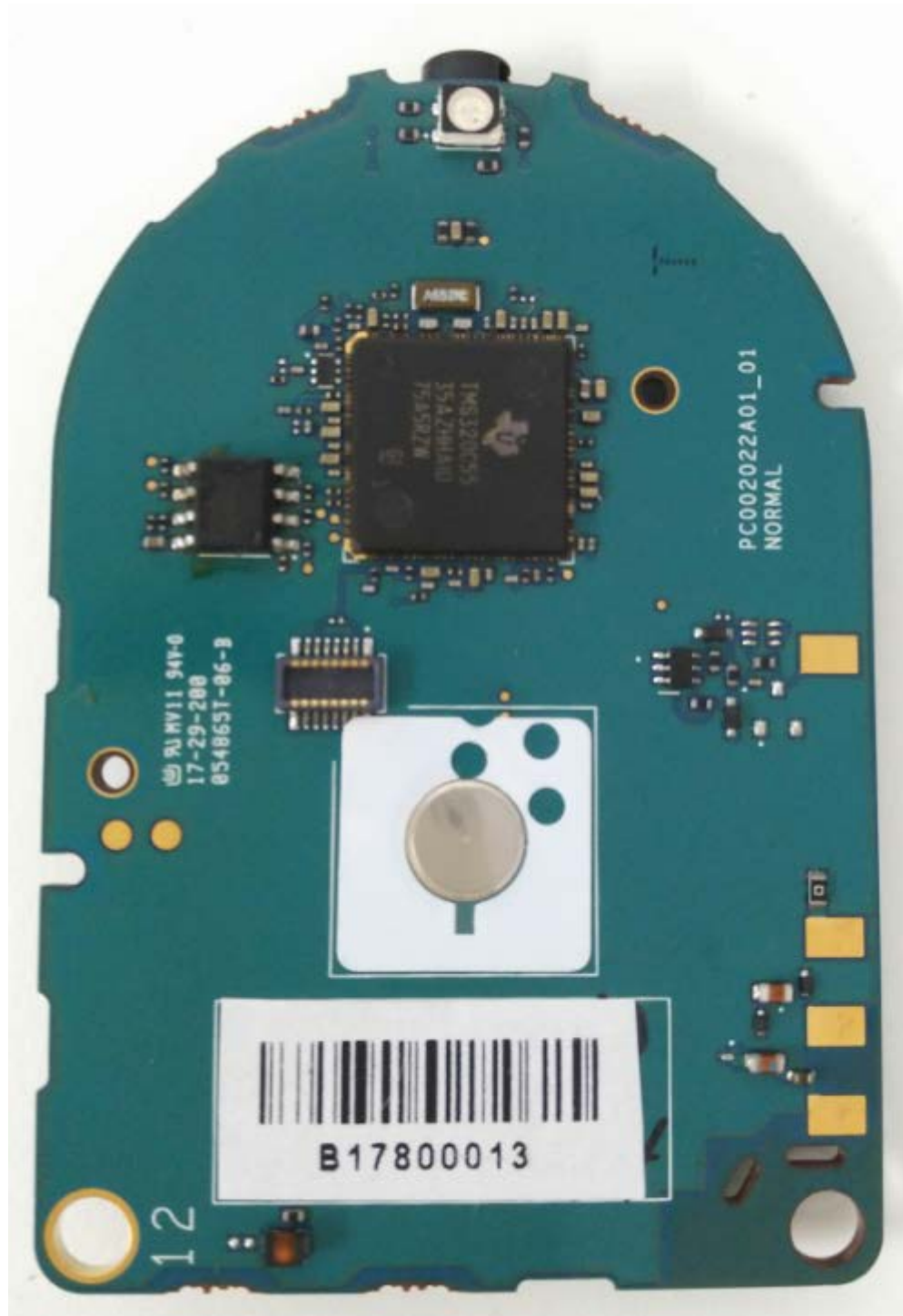
(Pursuant to FCC Part 2.1033(b)(7), 2.1033(c)(14) and RSP 100 Sec 4)

The following photographs are attached.

Exhibit

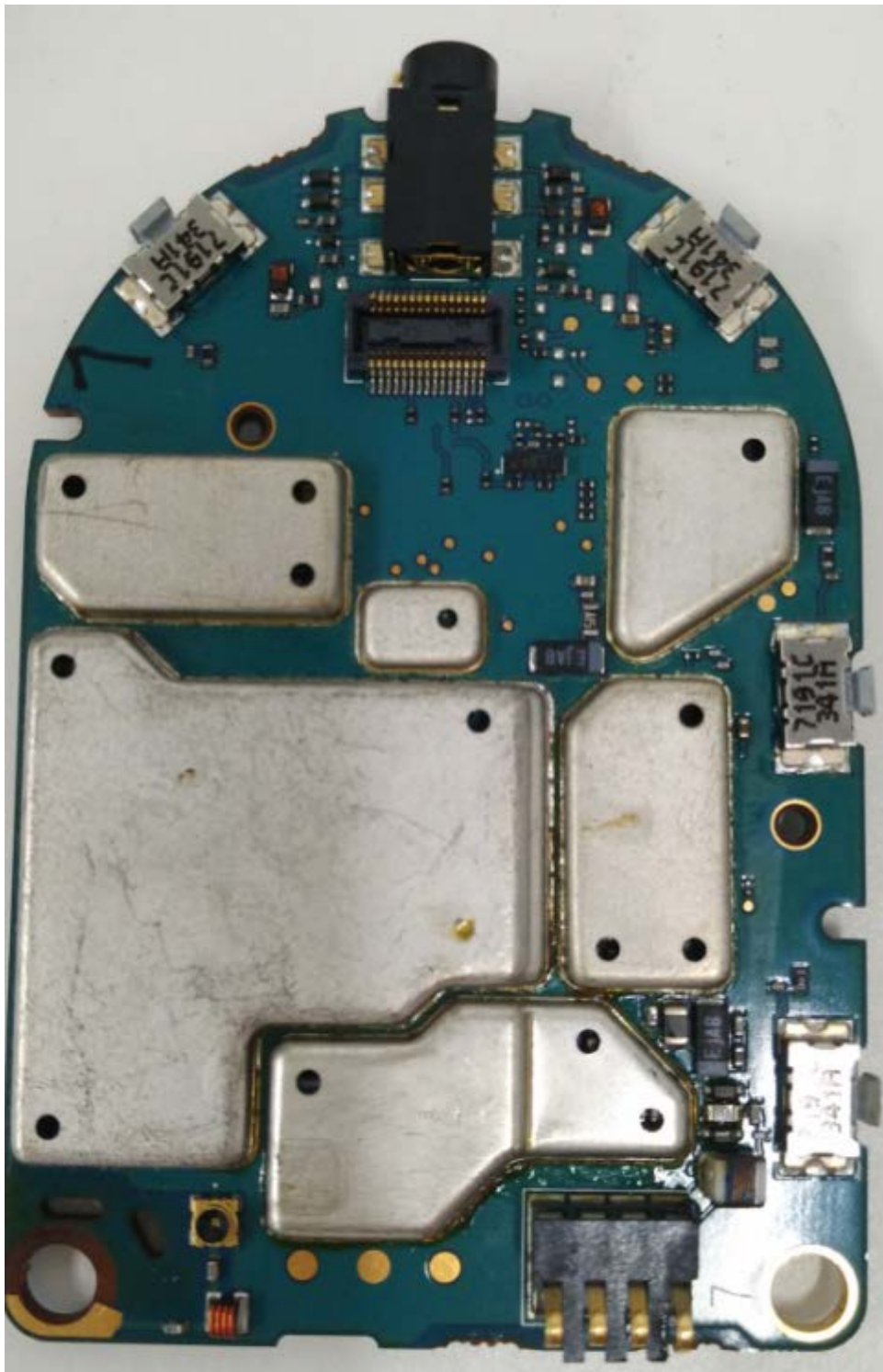
- | | |
|---|----|
| 1. RF Board (Top) [CLP1060, CLP1063] | 9A |
| 2. RF Board with Shields (Bottom) [CLP1060, CLP1063] | 9B |
| 4. RF Board without Shields (Bottom) [CLP1060, CLP1063] | 9C |
| 5. RF Board with chasing and housing (front side) | 9D |
| 6. Chassis and Housing (back side) | 9E |
| 7. Bluetooth board (front side) | 9F |
| 8. Bluetooth board (back side) | 9G |
| 7. Exploded View of Radio [CLP1060, CLP1063] | 9H |

Exhibits 9A



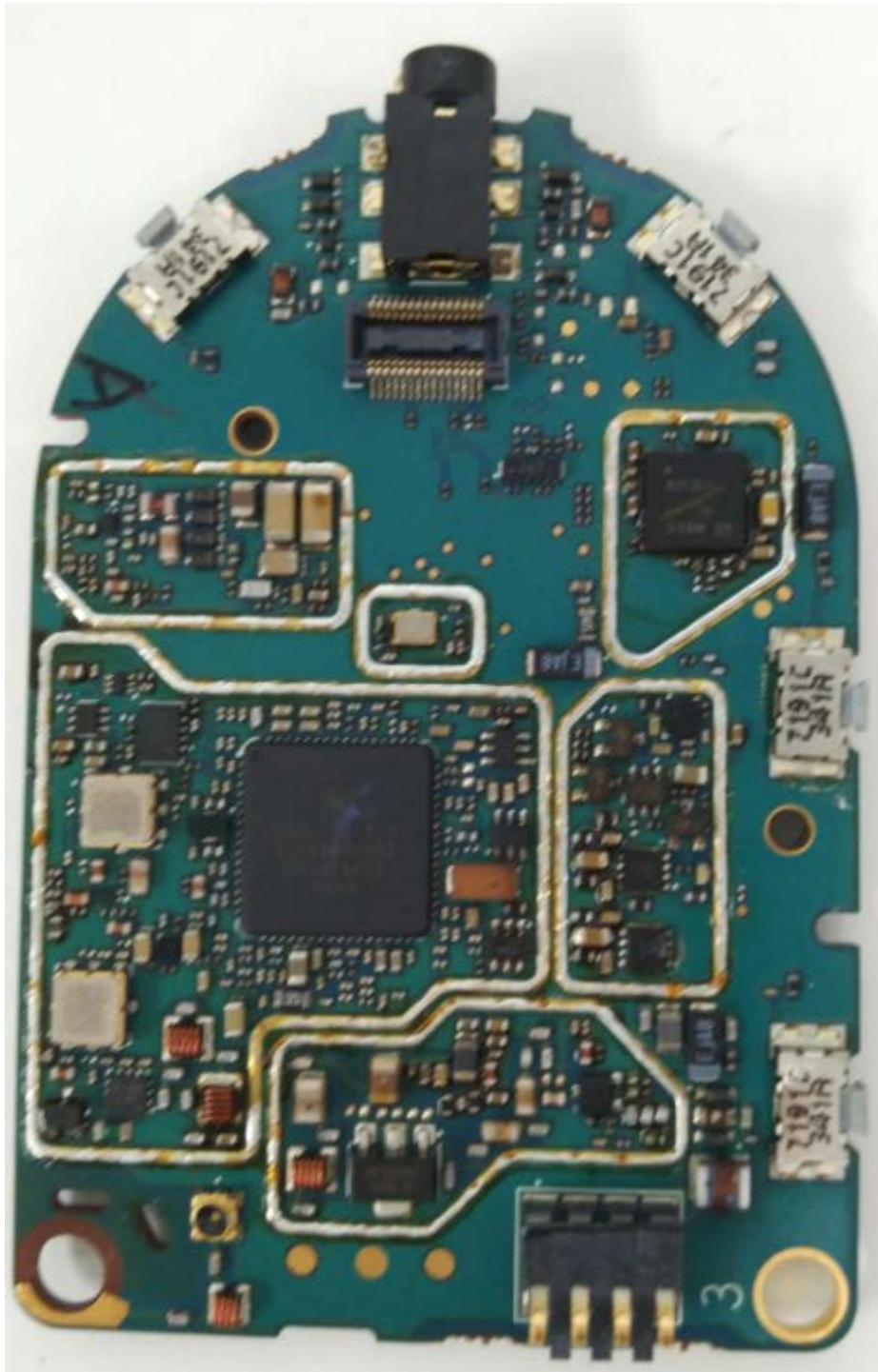
RF board (Top)
(CLP1060, CLP1063)

Exhibits 9B



RF board with Shields (Bottom)
(CLP1060, CLP1063)

Exhibit 9C



RF board without Shields (Bottom)
(CLP1060, CLP1063)

Exhibit 9D



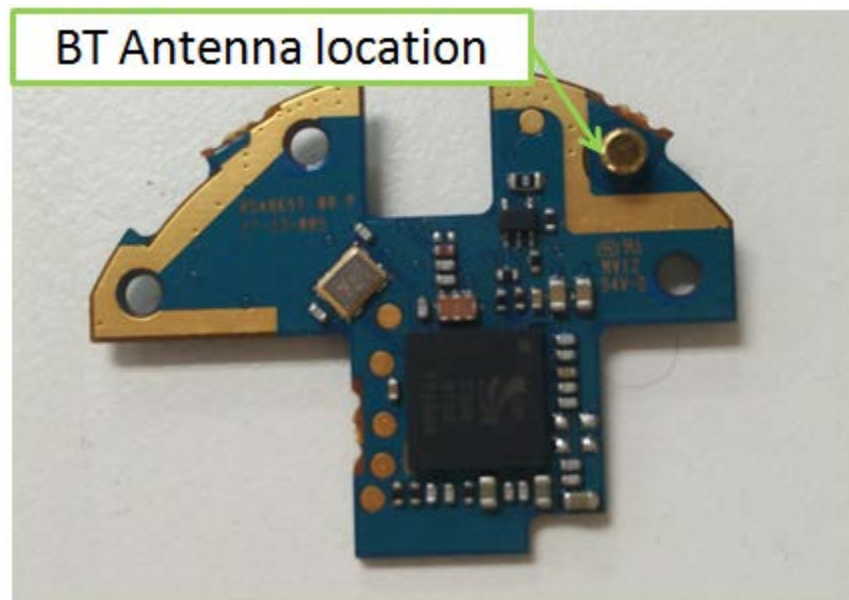
RF board with housing (front side)
(Same between CLP1060, CLP1063, only front nameplate label change)

Exhibit 9E



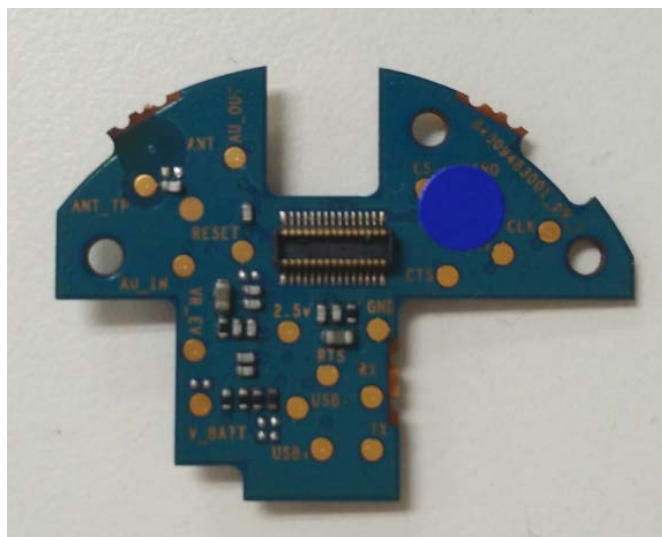
Chassis and Housing (Back side)
(CLP1060, CLP1063)

Exhibit 9F



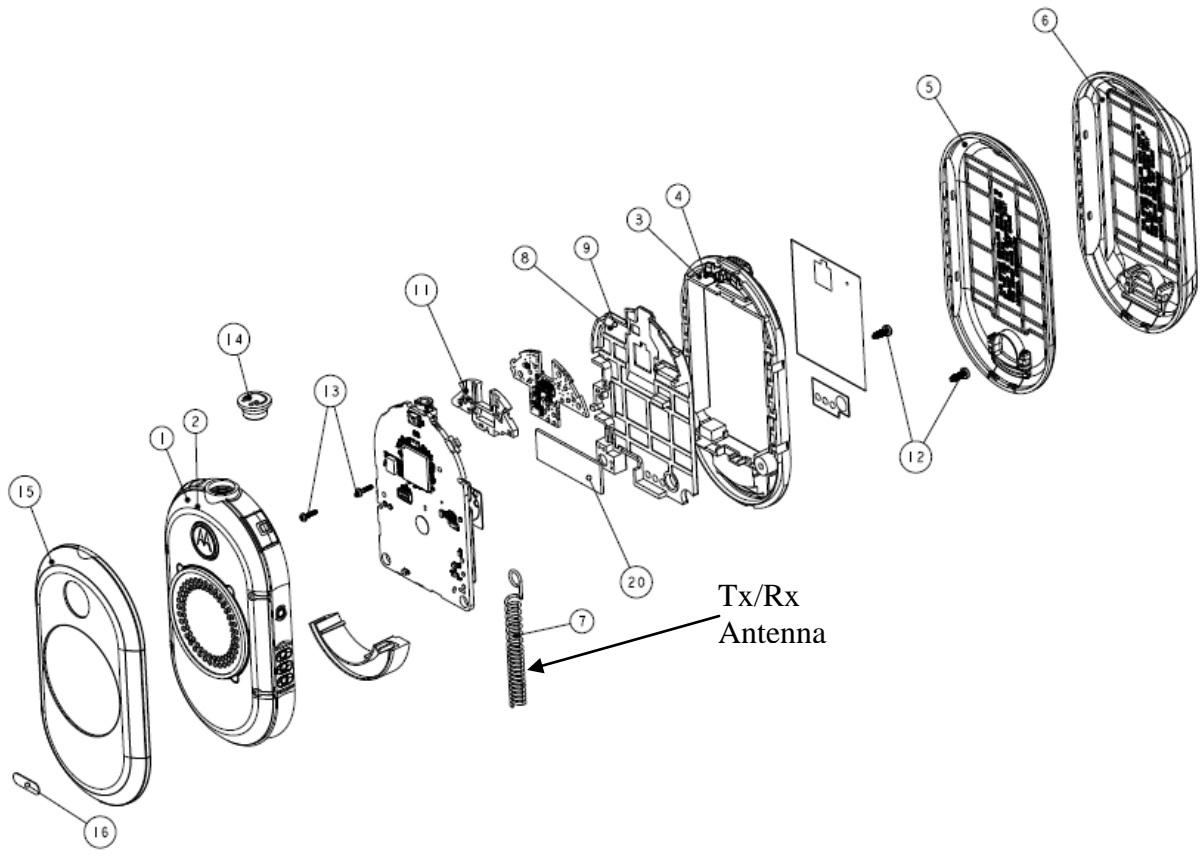
Bluetooth board (front side)

Exhibit 9G



Bluetooth board (back side)

Exhibit 9H



Exploded View of Radio