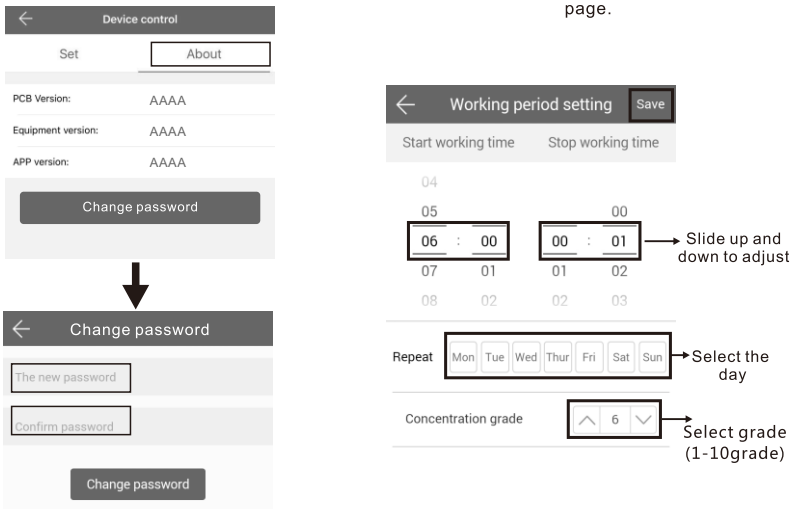


Where to get the app:  
Please search "scent marketing" in Google play or App store and you will find it.

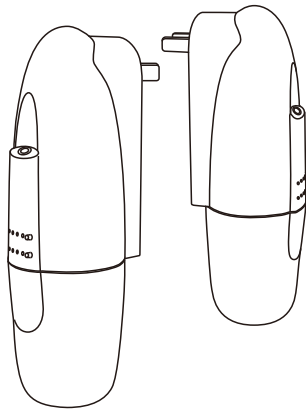


### Amend password



# PRODUCT MANUAL

## SCENT MARKETING



103 103-APP

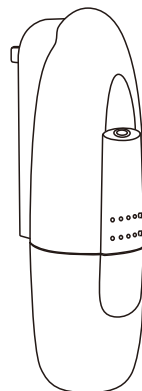
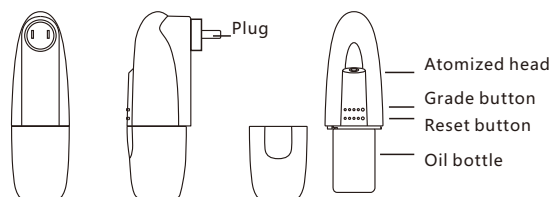
### Troubleshooting

Before having the machine repaired, please try to diagnose the problem first with the bellow instructions

Symptom	Remedy
Does not diffuse	- Whether the machine is in "not working period" . If yes, it won't spray. - Check whether the air pump is damaged. If yes, replace it with a new one.
Spray little	- Check whether the gasket is damaged or loose. Please adjust it or replace it with a new one. - Check whether the atomized core is plugged; clear it with alcohol or replace it with a new one
Oil spill	- Check whether the atomized head is damaged
Oil overflow	- Check whether the oil bottle is loose, please install it correctly - Check whether the gasket of the atomized head is damaged; if yes, please replace it with another one. - Please keep the machine vertical; Tilt or lie flatly will cause the oil overflow

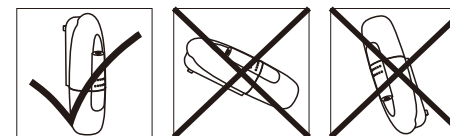
## Specification

[ Product ]	: AE103
[ Size ]	: 122*65*214mm
[ Volume ]	: 100ml
[ Weight ]	: 300g
[ Coverage ]	: 100m <sup>2</sup>
[ Power ]	: AC100V-240V 60/60HZ



## Warning

1. Please keep the machine vertical. Tilt or lie flatly may cause the oil overflow. The efficiency of the machine may be affected.
2. The machine must also remain upright when changing essential oils. Tilt or turn the machine will cause oil leakage, causing damage to the machine.
3. Shall not modify, disassemble or repair the machine. If any failure happens to the machine, please contact our technical personnel.



## Equipment cleaning

The machine need to be cleaned when below situation happens:

1. You're about to change another kind of essential oils
2. The atomization volume goes weak

### Cleaning steps:

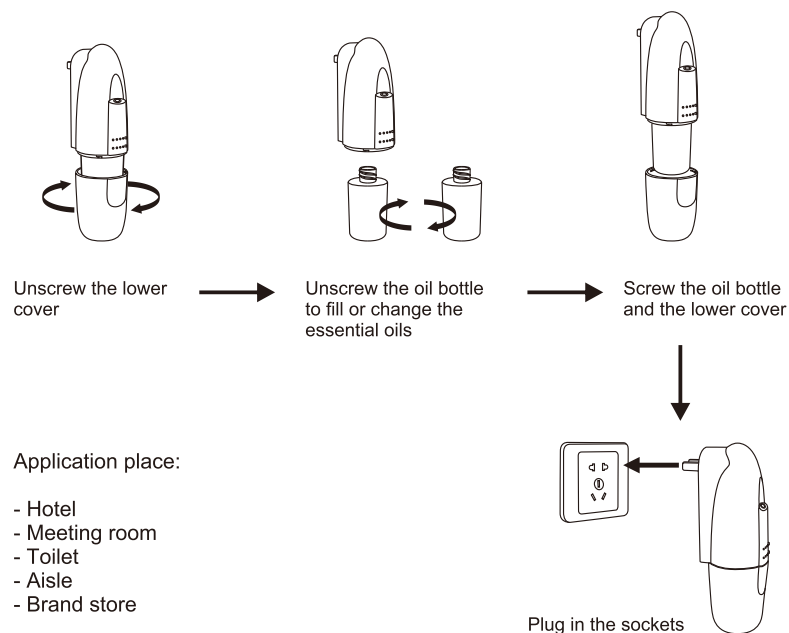
1. Unscrew the lower cover and take out the oil bottle
2. Find a larger container and fill the industrial alcohol up. Then soak the bottle for 5-10 minutes.
3. Airing the bottle.

## Concentration and consumption

Grade	G1	G2	G3	G4
Pausing time(s)	285s	135s	85s	60s
Consumption(ml/hr)	0.07	0.15	0.23	0.30

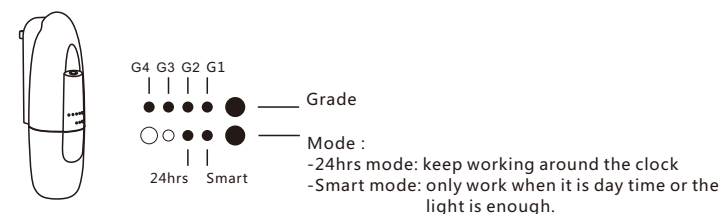
Notes: 1.The working time above of each grade is 15s.  
2.Different grade and oil may be with different consumption.

## Installation method

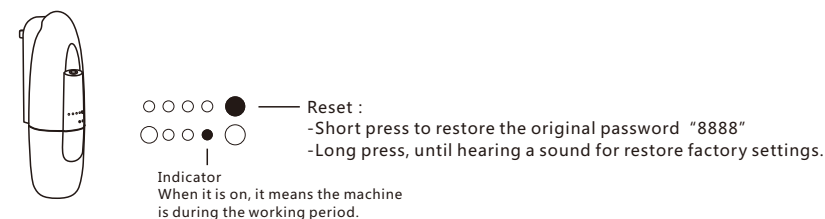


## Operating instructions

### Button control version: easy to handle and light sensor mode



### APP version: Controlled by APP, more convenient and intelligent



FCC Warning Statement Changes or modifications not expressly approved by the party responsible for compliance could void the user's authority to operate the equipment. This equipment has been tested and found to comply with the limits for a Class B digital device, pursuant to Part 15 of the FCC Rules. These limits are designed to provide reasonable protection against harmful interference in a residential installation. This equipment generates uses and can radiate radio frequency energy and, if not installed and used in accordance with the instructions, may cause harmful interference to radio communications. However, there is no guarantee that interference will not occur in a particular installation. If this equipment does cause harmful interference to radio or television reception, which can be determined by turning the equipment off and on, the user is encouraged to try to correct the interference by one or more of the following measures:

- Reorient or relocate the receiving antenna.
- Increase the separation between the equipment and receiver.
- Connect the equipment into an outlet on a circuit different from that to which the receiver is connected.
- Consult the dealer or an experienced radio/TV technician for help.

This device complies with part 15 of the FCC Rules. Operation is subject to the following two conditions: (1) This device may not cause harmful interference, and (2) this device must accept any interference received, including interference that may cause undesired operation.