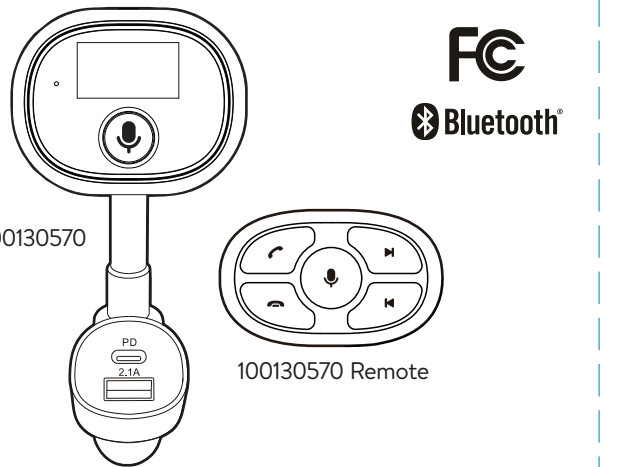


onn.™

USER GUIDE

Bluetooth FM Transmitter Voice Assistant



Model #100130570_EN_04/06/2023



Contents & Information

CONTENTS & INFORMATION

Features

OVERVIEW

CONTROLS

OPERATION

Setup

Select Source (Bluetooth, Aux input)

Voice Assistant

Hands-free Calls

SPECIFICATIONS

LEGAL

WARRANTY

SAFETY PRECAUTIONS

TROUBLESHOOTING

Features

Push voice button to wake up voice assistant (Smart Device)

-Native Voice App

Hands-free calling with built-in microphone

Bluetooth connection to mobile device (A2DP)

8 RGB light modes

-Red / green / blue light always on

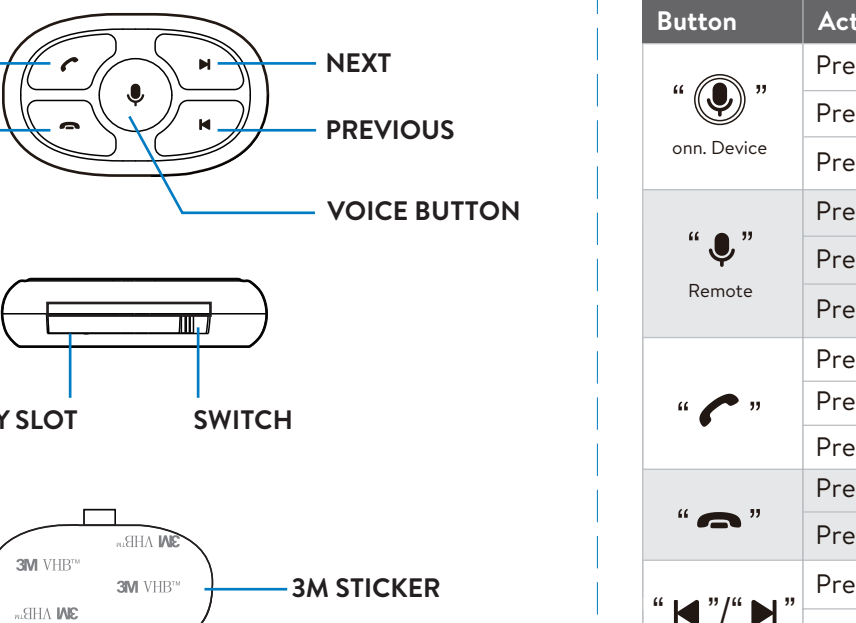
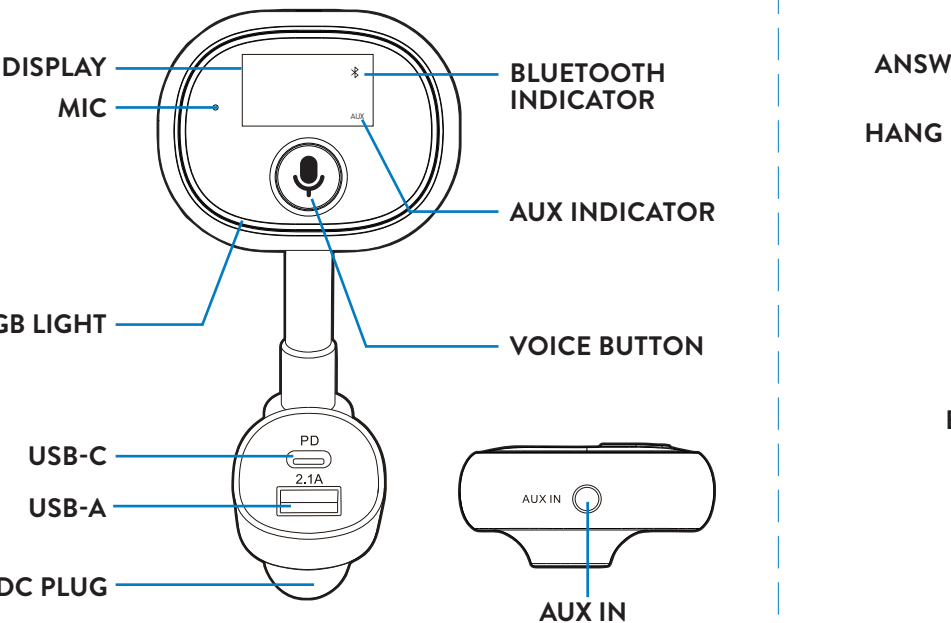
-Red / green / blue breathing light

-Turn off / all color cycles

30W charging (USB-C and USB-A)

Remote Control

Overview



Controls

Button

Action

Behaviors

Press

Press Twice

Press for 5 Seconds

Press

Press

Press for 5 Seconds

Press

Press

Press Twice

Press

Press for 2 Seconds

Press

Press for 2 Seconds

Wake Up Voice Assistant

Switch RGB Light Mode

Clear Bluetooth Connection

Wake Up Voice Assistant

Private Call / Hands-free Call

Clear Bluetooth Connection

Pause / Play

Answer Call

Call Back

End / Reject Call

Switch to Bluetooth/AUX

Back

Next

Enter FM Station Setting

Operation

SETUP

1. Insert DC plug into 12V/24V DC port. Display shows vehicle battery voltage, FM station, Bluetooth indicator status.

2. Stick the remote control in a suitable place with the 3M sticker.

(for example: steering wheel)

3. Turn on vehicle radio. Select unused FM station (FM 88.1 to 107.9).

4. Press

- "◀ or ▶" 2 seconds enter FM station setting.

- "◀ or ▶" -/+ by 0.1MHz, long press to skip.

5. Press

- "◀ or ▶" 2 seconds enter FM station setting.

- "◀ or ▶" -/+ by 0.1MHz, long press to skip.

6. Press

- "◀ or ▶" 2 seconds enter FM station setting.

- "◀ or ▶" -/+ by 0.1MHz, long press to skip.

7. Press

- "◀ or ▶" 2 seconds enter FM station setting.

Operation

SETUP

1. Insert DC plug into 12V/24V DC port. Display shows vehicle battery voltage, FM station, Bluetooth indicator status.

2. Stick the remote control in a suitable place with the 3M sticker.

(for example: steering wheel)

3. Turn on vehicle radio. Select unused FM station (FM 88.1 to 107.9).

4. Press

- "◀ or ▶" 2 seconds enter FM station setting.

- "◀ or ▶" -/+ by 0.1MHz, long press to skip.

5. Press

- "◀ or ▶" 2 seconds enter FM station setting.

- "◀ or ▶" -/+ by 0.1MHz, long press to skip.

6. Press

- "◀ or ▶" 2 seconds enter FM station setting.

- "◀ or ▶" -/+ by 0.1MHz, long press to skip.

7. Press

- "◀ or ▶" 2 seconds enter FM station setting.

Operation

SETUP

1. Insert DC plug into 12V/24V DC port. Display shows vehicle battery voltage, FM station, Bluetooth indicator status.

2. Stick the remote control in a suitable place with the 3M sticker.

(for example: steering wheel)

3. Turn on vehicle radio. Select unused FM station (FM 88.1 to 107.9).

4. Press

- "◀ or ▶" 2 seconds enter FM station setting.

- "◀ or ▶" -/+ by 0.1MHz, long press to skip.

5. Press

- "◀ or ▶" 2 seconds enter FM station setting.

- "◀ or ▶" -/+ by 0.1MHz, long press to skip.

6. Press

- "◀ or ▶" 2 seconds enter FM station setting.

- "◀ or ▶" -/+ by 0.1MHz, long press to skip.

7. Press

- "◀ or ▶" 2 seconds enter FM station setting.

Operation

SETUP

1. Insert DC plug into 12V/24V DC port. Display shows vehicle battery voltage, FM station, Bluetooth indicator status.

2. Stick the remote control in a suitable place with the 3M sticker.

(for example: steering wheel)

3. Turn on vehicle radio. Select unused FM station (FM 88.1 to 107.9).

4. Press

- "◀ or ▶" 2 seconds enter FM station setting.

- "◀ or ▶" -/+ by 0.1MHz, long press to skip.

5. Press

- "◀ or ▶" 2 seconds enter FM station setting.

- "◀ or ▶" -/+ by 0.1MHz, long press to skip.

6. Press

- "◀ or ▶" 2 seconds enter FM station setting.

- "◀ or ▶" -/+ by 0.1MHz, long press to skip.

7. Press

- "◀ or ▶" 2 seconds enter FM station setting.

Operation

SETUP

1. Insert DC plug into 12V/24V DC port. Display shows vehicle battery voltage, FM station, Bluetooth indicator status.

2. Stick the remote control in a suitable place with the 3M sticker.

(for example: steering wheel)

3. Turn on vehicle radio. Select unused FM station (FM 88.1 to 107.9).

4. Press

- "◀ or ▶" 2 seconds enter FM station setting.

- "◀ or ▶" -/+ by 0.1MHz, long press to skip.

5. Press

- "◀ or ▶" 2 seconds enter FM station setting.

- "◀ or ▶" -/+ by 0.1MHz, long press to skip.

6. Press

- "◀ or ▶" 2 seconds enter FM station setting.

- "◀ or ▶" -/+ by 0.1MHz, long press to skip.

7. Press

- "◀ or ▶" 2 seconds enter FM station setting.

onn.™

HAVING TROUBLE? WE CAN HELP

1-888-516-2630

7 DAYS/WEEK 7:00am- 9:00pm CST

SAVE THIS USER GUIDE

Read entire user guide

before installation and use

Made in Vietnam

