

hohem

iSTEADY V2

AI Smartphone Gimbal

User Manual V1.0

Contents

- 1 Download the Hohem Pro App
- 2 iSteady V2 Overview
- 3 Mounting and Balancing
- 4 Activation & Bluetooth Connection
- 5 AI Visual Tracking & LED Video Light
- 6 Button Function
- 7 Working Mode & Follow Speed
- 8 How to fold the gimbal?
- 9 Use as emergency power bank
- 10 How to do if the gimbal is not level after powering on?
- 11 Power indicator and Bluetooth indicator function
- 12 Specifications
- 13 Warranty Card

Disclaimer and Warning

Thank you for purchasing the Hohem product. By using this product, you hereby signify that you have read this disclaimer and warning carefully and that you understand and agree to abide by the terms and conditions herein. You agree that you are solely responsible for your own conduct while using this product, and for any consequences thereof. You agree to use this product only for purposes that are proper and in accordance with all applicable laws, rules, and regulations, and all terms, precautions, practices, policies and guidelines Hohem has made and may make available. Hohem accepts no liability for damage, injury or any legal responsibility incurred directly or indirectly from the use of this product. The user shall observe safe and lawful practices including, but not limited to, those set forth in this document.

Important Notes:

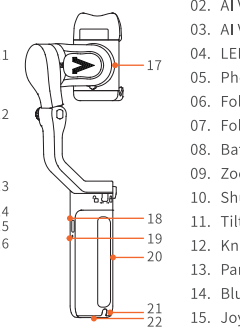
- When powering on iSteady V2 at first use, activation is required through Hohem Pro app.
- iSteady V2 works after the activation.
- Mount your mobile phone before powering on iSteady V2.
- If no mobile phone is detected or the motor is overloaded due to phone is not level, the gimbal will shut down after a warning beeping.

1. Download the Hohem Pro App, Register and Login

Scan the QR code to enter the download page
Search "Hohem Pro" in the App Store or Google Play

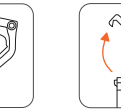
*Hohem Pro app requires iOS 10.0 or above, Android 6.0 or above
*More product tutorials can be found on the app homepage

2. iSteady V2 Overview

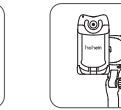


- | | |
|---|--|
| 01. AI Vision Sensor & LED Video Light Power Button | |
| 02. AI Vision Indicator | |
| 03. AI Vision Sensor | |
| 04. LED Video Light | |
| 05. Phone Clamp | |
| 06. Folding Lock A | |
| 07. Folding Lock B | |
| 08. Battery Indicator | |
| 09. Zoom Slider | |
| 10. Shutter Button | |
| 11. Tilt Motor | |
| 12. Knob | |
| 13. Pan Motor | |
| 14. Bluetooth Light | |
| 15. Joystick | |
| 16. Power (ON/OFF) / Function Button | |
| 17. Roll Motor | |
| 18. Bidirectional charging port (Type C) | |
| 19. Reset | |
| 20. Handle (Battery built-in) | |
| 21. Lanyard Hole | |
| 22. 1/4 inch Screw Port | |

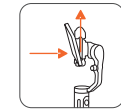
3. How to mount and balance mobile phone on the gimbal?



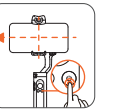
① Unfold the gimbal



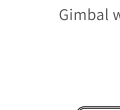
② Screw up the knob



③ Turn the "hohem" logo upward



④ Put your phone stuck in the bottom of phone clamp and pull the head of phone clamp to mount your phone.



⑤ Slide the phone and make sure it is clamped in the middle, power on the gimbal after balancing the phone clamp.

4. Booting up iSteady V2 at first use Activation & Bluetooth Connection

For the first time, please turn on the gimbal. Log into the Hohem Pro app to activate the gimbal. Gimbal will work improperly if not been activated.

① Startup
Long press the function button. At the first start, it will enter a to-be-activated state and the Bluetooth indicator will flash alternately in red and green.

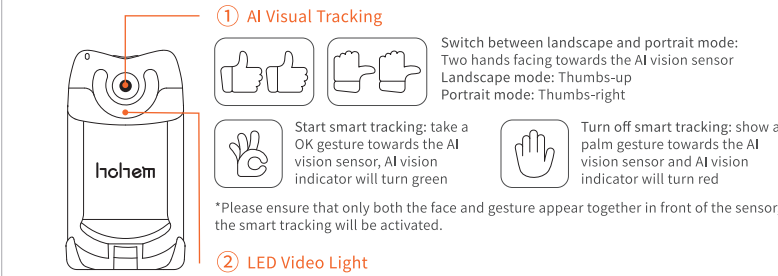
② Bluetooth connection through the APP
Turn on the bluetooth of phone. Log into the app Hohem Pro. Following the notice at the top for connection.

③ Activate iSteady V2
After the Bluetooth is connected, an activation prompt box will pop up. Click "Confirm" to complete the activation. Three beeps for noticing you the activation has done, and you can use the gimbal now.

5. AI Visual Tracking & LED Video Light

To enable this function, please press AI vision sensor & LED video light power button, AI vision indicator will turn red and the LED video light will show double flash.

*Please ensure that the gimbal has turned on before enabling this function. For closing this function, please long press AI vision sensor & LED video light power button.



① AI Visual Tracking
Switch between landscape and portrait mode:
Two hands facing towards the AI vision sensor
Landscape mode: Thumbs-up
Portrait mode: Thumbs-right
Start smart tracking: take a OK gesture towards the AI vision sensor, AI vision indicator will turn green
Turn off smart tracking: show a palm gesture towards the AI vision sensor and AI vision indicator will turn red
*Please ensure that only both the face and gesture appear together in front of the sensor, the smart tracking will be activated.

② LED Video Light
Press AI vision sensor & LED video light power button to adjust the light intensity, LED turns according to low-medium-high-close modes.

6.Button Function

① Power (ON/OFF) / Function Button

Long Press:Power On/Off

Single Press:Switch the landscape and portrait modes

Double Press: Recenter the gimbal

Triple Press: Inception (Auto rotation)

Press Five Times: Auto calibration

Press Seven Times: Remote control pairing

The bluetooth light will flash alternatly in yellow and green.

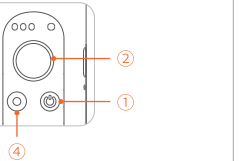
(The remote control is an optional accessory)

a. If the remote control is not paired within 30 seconds, the pairing will be cancelled;

b. Click the function button to cancel pairing;

c. Double-click the function button to clear the paired remote control and cancel pairing;

(And the paired remote control will be unavailable and need to be re-paired)



② Joystick
Up/Down:Tilt Control
Left/Right:Pan Control
(It is able to control the roll motor through Left/Right Joystick Settings in Hohem Pro app)

④ Shutter Button (Ensure the Bluetooth is connected)
Single Press: Take photo, Start/End video
Double Press: Switch photo/video modes
Triple Press: Switch front/rear cameras (Only available in the app)

7.Working Mode & Follow Speed

How to switch working modes by button?

Combination operation: Press and hold shutter button and tap power button

Single Tap: Pan&Tilt Follow (Default)

Triple Tap: All Lock

Double Tap: Pan Follow

Quartic Tap: POV (All Follow)

*Tips: To ensure proper operation, please release the shutter button after the power button.

Working Mode

Pan&Tilt Follow

This is the default working mode. When you rotate the handle left/right/tilt up/tilt down, the camera will follow the handle movements, and the roll motor is locked without follow the movement.

Pan Follow

When you rotate the handle left/right, the camera will follow the handle movements. The tilt motor does not follow within the angle range of -30°~+30 movement, if exceed this range, the gimbal will follow the tilt movement, and the roll motor is locked without follow the movement.

Follow Speed

General Shooting with general follow speed

Slow

Shooting with slow follow speed

Medium

Shooting to follow the fast movement

Fast

Fast follow speed for video transition

POV (All Follow)

First person point of view

Gives you 360° complete movement, you can pan, tilt and roll with it.

Follow Speed

General Shooting with general follow speed

Slow

Shooting with slow follow speed

Medium

Shooting to follow the fast movement

Fast

Fast follow speed for video transition

POV (All Follow)

First person point of view

Gives you 360° complete movement, you can pan, tilt and roll with it.

Follow Speed

General Shooting with general follow speed

Slow

Shooting with slow follow speed

Medium

Shooting to follow the fast movement

Fast

Fast follow speed for video transition

POV (All Follow)

First person point of view

Gives you 360° complete movement, you can pan, tilt and roll with it.

Follow Speed

General Shooting with general follow speed

Slow

Shooting with slow follow speed

Medium

Shooting to follow the fast movement

Fast

Fast follow speed for video transition

POV (All Follow)

First person point of view

Gives you 360° complete movement, you can pan, tilt and roll with it.

Follow Speed

General Shooting with general follow speed

Slow

Shooting with slow follow speed

Medium

Shooting to follow the fast movement

Fast

Fast follow speed for video transition

FCC Statement:

Federal Communication Commission (FCC) Radiation Exposure Statement

The device has been evaluated to meet general RF exposure requirement, The device can be used

in portable exposure condition without restriction

This device complies with part 15 of the FCC rules. Operation is subject to the

following two conditions:

(1) this device may not cause harmful interference, and

(2) this device must accept any interference received, including interference that may cause undesired operation.

NOTE: The manufacturer is not responsible for any radio or TV interference caused

by unauthorized modifications or changes to this equipment. Such modifications or

changes could void the user's authority to operate the equipment.

NOTE: This equipment has been tested and found to comply with the limits for a

Class B digital device, pursuant to part 15 of the FCC Rules. These limits are designed

to provide reasonable protection against harmful interference in a residential

installation. This equipment generates uses and can radiate radio frequency energy

and, if not installed and used in accordance with the instructions, may cause harmful

interference to radio communications. However, there is no guarantee that

interference will not occur in a particular installation. If this equipment does cause

harmful interference to radio or television reception, which can be determined by

turning the equipment off and on, the user is encouraged to try to correct the

interference by one or more of the following measures:

- Reorient or relocate the receiving antenna.
- Increase the separation between the equipment and receiver.
- Connect the equipment into an outlet on a circuit different from that to which the receiver is connected.
- Consult the dealer or an experienced radio/TV technician for help.

CE:

This device is operated the frequency bands and the maximum output power (E.I.R.P) :

2402MHz - 2480MHz : 6.51dBm

CAUTION RISK OF EXPLOSION IF BATTERY IS REPLACED BY AN INCORRECT TYPE.

DISPOSE OF

USED BATTERIES ACCORDING TO THE INSTRUCTIONS.

The adapter shall be installed near the equipment and shall be easily accessible.

the recommended output voltage/current of the adaptor is 5Vdc/1A.,and the adapter shall be CE

approval type.

The suitable temperature for the product and accessories is -10 °C ~40 °C .