

RF6FOB INTERNAL PHOTOS

CASE INTERIOR FRONT:

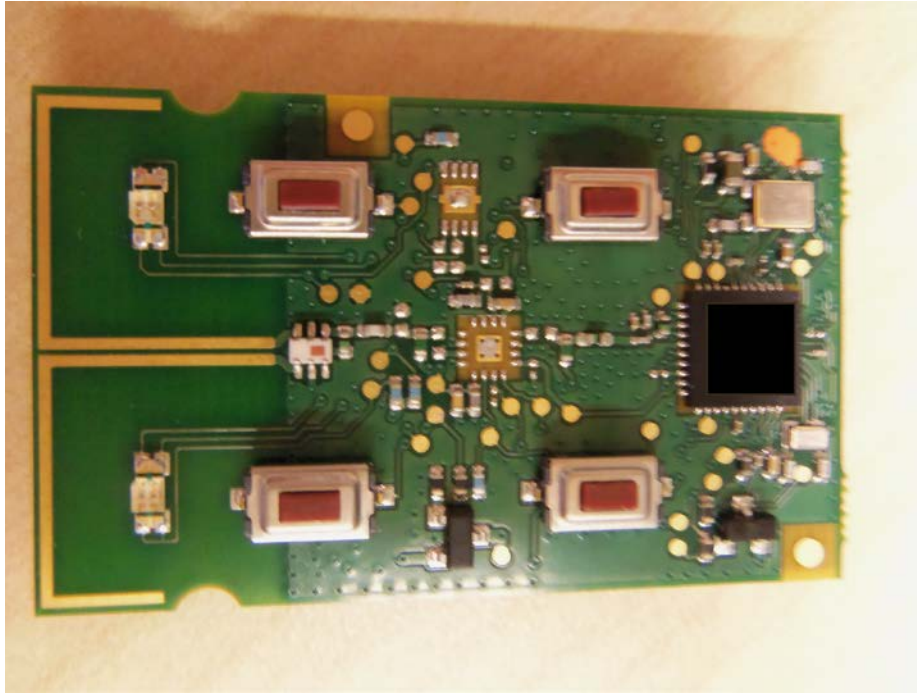


CASE INTERIOR REAR:



RF6FOB INTERNAL PHOTOS CONT.

PCB TOP:



PCB TOP WITH BUTTON COVERS:



PCB BOTTOM:



Engineering change is in process to silkscreen this location with the following text:

FCC ID: CFS8DLRF6FOB
IC#: 573F-RF6FOB
IC MODEL: RF6FOB