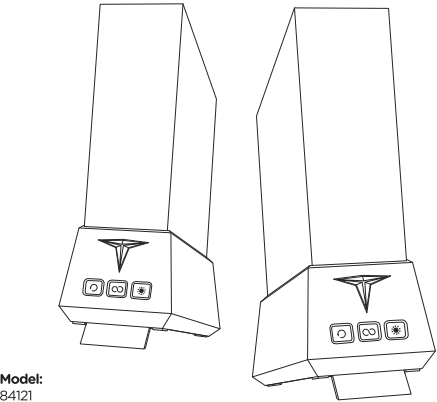




Wi-Fi Galaxy  
Gaming Tower Galaxy Light

Congratulations on your Enbrighten VIBE Galaxy Titan Towers! These lights transform your space with vibrant colors, endless customizations and smart controls using the free Enbrighten app. Please read this entire manual and all safety warnings and save these instructions for later.



Model: 84121

PROJECTION MODE

Project aurora-like effects onto the ceiling and wall by removing the frosted shade or the shade's back panel. The gaming towers can tilt backward by deploying their kickstands.

- To remove the shade (Fig. 1):
1. Turn off the gaming tower.
  2. Hold the base and gently twist the shade counterclockwise to remove.
  3. Operate the lights as normal.

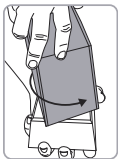


Fig. 1

- To install the shade (Fig. 2):
1. Align shade with the grooves on the base.
  2. Gently twist the shade clockwise until it clicks into place — do not force.



Fig. 2

- To remove the shade's back panel (Fig. 3):
1. Turn off the gaming tower.
  2. Hold the base and gently twist the shade counterclockwise to remove.
  3. Sandwich the shade's back panel between your thumb and fingers.
  4. Gently press down and forward as you slide the panel upward to remove.
  5. Align the shade with the grooves on the base, then gently twist clockwise until the shade clicks into place — do not force.
  6. Operate the lights as normal.

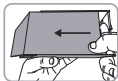


Fig. 3

- To install the back panel (Fig. 4):
1. Align the panel's edges with the grooves on the inside of the shade.
  2. Slide the panel downward until it clicks into place.

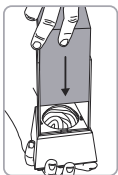


Fig. 4

**NOTE:** Do not stare or look directly into the lights, as this can be hazardous and can damage your eyes.

Thank you for your purchase!

Instructions made easy



Read instructions or watch an easy-to-follow video. Scan code or visit [byjasco.com/84121i](http://byjasco.com/84121i).

Register your product



Receive exclusive deals and register your product. Scan code or visit [byjasco.com/deals](http://byjasco.com/deals).



Discover more innovative lighting at [www.enbrightenme.com](http://www.enbrightenme.com).



**Like our product?** Leave a review on your favorite retailer website or amazon.com.



**Having problems?** Let us know how we can help. Call 1-800-225-0653, M-F

SETUP

Remotely operate your smart gaming towers with the easy-to-use Enbrighten app. Follow the available instructions and resources to set up your smart device.

**Download the app**

Scan the QR code or search Enbrighten on the Apple App Store or on Google Play

Download on the App Store | GET IT ON Google Play

**Setup and installation**

1. Create an account in the Enbrighten app

2. Assemble the smart gaming towers according to the provided instructions

**Setup and installation**

3. Plug the smart gaming towers into a wall outlet

4. Add devices, control the smart gaming towers from anywhere and create schedules

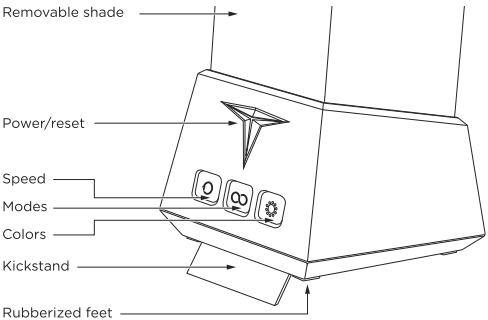
**Voice control**

Voice control works with Amazon Alexa or Google Assistant

works with alexa | works with Google Home

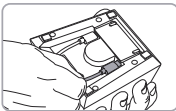
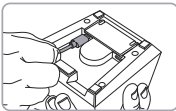
Select "Support" in the Enbrighten app or follow the steps in the Amazon Alexa or Google Home app to connect your Enbrighten account

GAMING TOWERS



ASSEMBLY

1. Connect the two gaming towers using one of the included 5ft. USB-C cables. This will ensure the towers are synced and both follow app or voice commands.
2. Connect one gaming tower to a 5V, 2A minimum USB-C port or adapter (not included) using the other 5ft. USB-C cable.



**NOTE:** The Enbrighten VIBE Titan Towers can be powered and operated separately but will not be synced. When the gaming towers are not connected to each other with the USB-C cable, only one will function with the app. The other one can be operated using the in-line controller.

MANUAL OPERATION



- ON/OFF**
- Press once to turn on the gaming towers
  - Press again to turn on the Titan logo
  - Press again to turn off the Titan logo
  - Press again to turn off the gaming towers

Pairing Mode

- Turn on the gaming towers and open the Enbrighten app. The app will automatically search for the tower and initiate the pairing process.
- If the tower is not found, restore it to default settings. When the tower is turned back on, the app will search for the tower again.

Restore Default Settings

- Turn on the gaming towers, then press and hold button approximately 3 seconds to return to default color, speed and mode settings. The Titan logo will blink three times once complete, then the gaming towers will turn off.



- Speed**
- Press to change how fast the lights move: slow, medium, fast, faster, stop.



- Modes**
- Press to change between modes.
  - Press the color button to change the colors each mode uses.

|       |  |
|-------|--|
| Fade  | Slowly fades through all colors                              |
| Flash | Flashes through each color in the selected color combination |
| Cycle | Adds selected colors one by one, then fades and restarts     |
| Pulse | Brightness slowly increases and decreases                    |
| Wave  | Adds and removes selected colors one by one                  |
| Solid | Stays on chosen color or combination                         |



- Colors and Dimming**
- Press repeatedly to advance through the color options.
  - Press and hold to select from five brightness levels. Once maximum or minimum brightness is reached, release the button, then press and hold to adjust brightness up or down.

| Order | Color                |
|-------|----------------------|
| 1     | Green/Blue/White     |
| 2     | Red/Green/Blue       |
| 3     | Red/Green/White      |
| 4     | Red/Blue/White       |
| 5     | Red/Green/Blue/White |
| 6     | Red                  |
| 7     | Green                |
| 8     | Blue                 |
| 9     | White                |
| 10    | Red/Green            |
| 11    | Red/Blue             |
| 12    | Red/White            |
| 13    | Green/Blue           |
| 14    | Green/White          |
| 15    | Blue/White           |

FCC

Suppliers Declaration of Conformity [Model #: 84121] Jasco Products Co, 10 E. Memorial Rd, Oklahoma City, OK 73114, [www.byjasco.com](http://www.byjasco.com)

This device complies with Part 15 of the FCC Rules. Operation is subject to the following two conditions: (1) this device may not cause harmful interference, and (2) this device must accept any interference received, including interference that may cause undesired operation.

**FCC NOTE:** The manufacturer is not responsible for any radio or TV interference caused by unauthorized modifications to this equipment. Such modifications could void the user's authority to operate the equipment.

**NOTE:** This equipment has been tested and found to comply with the limits for a Class B digital device, pursuant to Part 15 of the FCC Rules. These limits are designed to provide reasonable protection against harmful interference in a residential installation. This equipment generates, uses and can radiate radio frequency energy and, if not installed and used in accordance with the instructions, may cause harmful interference to radio communications. However, there is no guarantee interference will not occur in a particular installation. If this equipment does cause harmful interference to radio or television reception, which can be determined by turning the equipment off and on, the user is encouraged to try to correct the interference by one or more of the following measures:

- Reorient or relocate the receiving antenna.
- Increase the separation between the equipment and receiver.
- Connect the equipment into an outlet on a circuit different from that to which the receiver is connected.
- Consult the dealer or an experienced radio/TV technician for help.

**IMPORTANT NOTE:** To comply with the FCC RF exposure compliance requirements, no change to the antenna or the device is permitted. Any change to the antenna or the device could result in the device exceeding the RF exposure requirements and void user's authority to operate the device.

WARRANTY INFORMATION

**IMPORTANT — PLEASE READ**  
Refer to the manual or visit [www.byjasco.com](http://www.byjasco.com) for limitations and restrictions on warranties and the product registration information. This Jasco product has a 1-year limited warranty. Please contact our U.S.-based Consumer Care at 1-800-225-0653, M-F or [www.enbrightenme.com/warranty](http://www.enbrightenme.com/warranty) if the unit should prove defective within the warranty period.

SPECIFICATIONS

Model: 84121  
Rated input power: 11W Max (6.5W per tower)  
Operating temperature range: 32-113°F (0-45°C)

WARNINGS

- This is NOT a toy and not intended for use by children. Adult supervision is required at all times when children are nearby.
- Indoor use only. Do NOT expose this product to rain, moisture or water under any circumstances.
- UNDER NO CIRCUMSTANCES shall attempts be made to open the protective housing or operate the device if the product has been damaged.
- As with all bright light sources, when you operate this device in unsupervised general public areas, it is recommended that up-close access to the light be restricted or prevented, and the beams be directed into locations where persons are not expected.
- It is the owner/operator's responsibility to use this device in compliance with local laws.

MADE IN THAILAND  
Distributed by Jasco Products Company LLC,  
10 E. Memorial Rd, Oklahoma City, OK 73114.  
©JASCO 2025 | 84121 | 01/22/25 v1  
PATENTS/PATENTS PENDING  
[WWW.BYJASCO.COM/PATENTS](http://WWW.BYJASCO.COM/PATENTS)

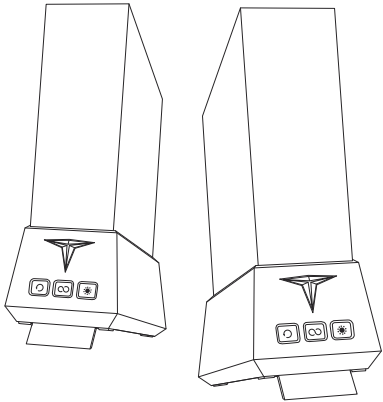
App Store is a service mark of Apple Inc.  
Google, Google Play and Google Home are trademarks of Google LLC.  
Amazon, Alexa and all related logos are trademarks of Amazon.com, Inc. or its affiliates.





Wi-Fi Galaxy  
Gaming Tower Galaxy Light

¡Felicitaciones por sus torres Enbrighten VIBE Galaxy Titan! Estas luces transforman tu espacio con colores vibrantes, personalizaciones infinitas y controles inteligentes mediante la aplicación gratuita Enbrighten. Lea este manual completo y todas las advertencias de seguridad y guarde estas instrucciones para más adelante.



Modelo:  
84121

¡Gracias por su compra!

Instrucciones fáciles



Lea las instrucciones o mire el video con el paso a paso.  
**Escanee el código o visite [byjasco.com/84121i](https://byjasco.com/84121i).**

Registre su producto



Recibe ofertas exclusivas y registra tu producto.  
**Escanee el código o visite [byjasco.com/deals](https://byjasco.com/deals).**



Descubra una iluminación más innovadora en [www.enbrightenme.com](https://www.enbrightenme.com).



¿Le gusta nuestro producto?

Deje una reseña en el sitio web de su comercio favorito o en amazon.com.



¿Tiene algún problema?

Díganos cómo podemos ayudar.  
Lláme al 1-800-654-8483, de lunes a viernes

PREPARACIÓN

Opere de forma remota sus torres de juegos inteligentes con la aplicación Enbrighten fácil de usar. Siga las instrucciones y recursos disponibles para configurar su dispositivo inteligente.

Descarga la aplicación



Escanee el código QR o busque Enbrighten en Apple App Store o en Google Play



Configuración e instalación

1.



Crea una cuenta en la aplicación Enbrighten

2.



Ensamble las torres de juego inteligentes de acuerdo con las instrucciones proporcionadas

Configuración e instalación

3.



Conecte las torres de juego inteligentes a una toma de pared

4.



Añade dispositivos, controle las torres de juego inteligentes desde cualquier lugar y cree horarios

Control de voz

El control por voz funciona con Amazon Alexa o Google Assistant



Seleccione "Soporte" en la aplicación Enbrighten o siga los pasos en la aplicación Amazon Alexa o Google Home para conectar su cuenta Enbrighten

TORRES DE JUEGO

Pantalla extraíble

Encendido/reinicio

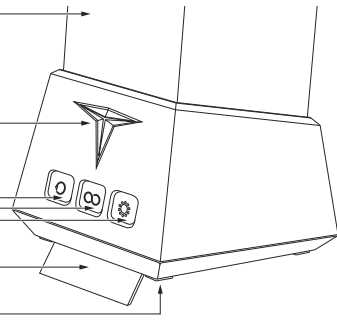
Speed

Modos

Colores

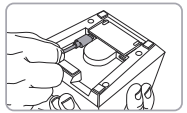
Soporte

Pies de goma

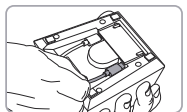


MONTAJE

1. Conecta las dos torres de juego mediante el uso de los cables USB-C. Esto asegurará que las torres estén sincronizadas y las dos sigan la aplicación o Comandos de voz.



2. Conecte una torre de juego a 5 V, Puerto o adaptador USB-C de 2 A como mínimo (no incluido) mediante el uso del otro cable USB-C de 5 pines.



**NOTA:** Las torres Enbrighten VIBE Titan se pueden alimentar y operar por separado, pero no se sincronizarán. Cuando las torres de juego no están conectadas entre sí con el cable USB-C, solo una funcionará con la aplicación. El otro se puede manejar mediante el controlador en línea.

MODO DE PROYECCIÓN

Proyecte efectos similares a la aurora boreal en el techo y la pared quitando la pantalla esmerilada o el panel posterior de la pantalla. Las torres de juego pueden inclinarse hacia atrás desplegando sus soportes.

Para quitar la pantalla (Fig. 1):

1. Apaga la torre de juego.
2. Sujete la base y gire suavemente la pantalla en sentido antihorario para quitar.
3. Opere las luces normalmente.

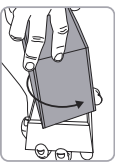


Fig. 1

Para instalar la persiana (Fig. 2):

1. Alinee la pantalla con las ranuras en la base.
2. Gire suavemente la pantalla en el sentido de las agujas del reloj hasta que encaja en su lugar, no lo fuerce.



Fig. 2

Para quitar el panel posterior de la persiana (Fig. 3):

1. Apaga la torre de juego.
2. Sujete la base y gire suavemente la gire la pantalla en sentido antihorario para realizar la extracción.
3. Coloque el panel posterior de la pantalla entre el pulgar y los dedos.
4. Presione suavemente hacia abajo y hacia adelante mientras deslice el panel hacia arriba para quitarlo.
5. Alinee la pantalla con las ranuras de la base, luego gire suavemente en el sentido de las agujas del reloj hasta que la pantalla persiana encaje en su lugar, pero no la fuerce.
6. Opere las luces normalmente.

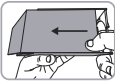


Fig. 3

Para instalar el panel posterior (Fig. 4):

1. Alinee los bordes del panel con las ranuras en el interior de la pantalla.
2. Deslice el panel hacia abajo hasta que encaje en su lugar.

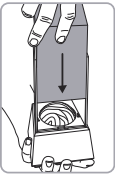


Fig. 4

**NOTA:** No mire fijamente las luces, ya que esto puede ser peligroso y dañar sus ojos.

OPERACIÓN MANUAL



Encendido/apagado

- Presione una vez para encender las torres de juego
- Presione nuevamente para encender el logotipo Titan
- Presione nuevamente para apagar el logotipo Titan
- Presiona nuevamente para apagar las torres de juego

Modo de emparejamiento

- Encienda las torres de juego, abra la aplicación Enbrighten. La aplicación buscará automáticamente la torre e iniciará el proceso de emparejamiento.
- Si no se encuentra la torre, restáurela a la configuración predeterminada. Cuando vuelva a encenderla, la aplicación la buscará nuevamente.

Restaurar configuración predeterminada

- Encienda las torres de juego, luego presione y mantenga presionado el botón aproximadamente 3 segundos para volver al color, velocidad y configuración de modo. El logotipo Titan parpadeará tres veces cuando se haya completado, luego las torres de juego se apagarán.



Speed

- Presione para cambiar la rapidez con que se mueven las luces: Lento, medio, rápido, más rápido, parar.



Modos

- Presione para cambiar entre modos.
- Presione el botón de color para cambiar los colores que cada modo utiliza.

|            |  |
|------------|--|
| Desvanecer | Se desvanece lentamente a través de todos los colores                          |
| Flash      | Parpadea a través de cada color en la combinación de colores seleccionada      |
| Ciclo      | Agrega los colores seleccionados uno por uno, luego se desvanece y se reinicia |
| Pulso      | El brillo aumenta y disminuye lentamente                                       |
| Onda       | Agrega y elimina los colores seleccionados uno por uno                         |
| Sólido     | Permanece en el color o combinación elegidos                                   |



Colores y oscurecimiento

- Presione repetidamente para avanzar por las opciones de color.
- Mantenga presionado para seleccionar entre cinco niveles de brillo. Una vez alcanzado el brillo máximo o mínimo, suelte el botón, luego presione y mantenga presionado para ajustar subir o bajar el brillo.

| Orden | Color                  |
|-------|------------------------|
| 1     | Verde/Azul/Blanco      |
| 2     | Rojo/Verde/Azul        |
| 3     | Rojo/Verde/Blanco      |
| 4     | Rojo/Azul/Blanco       |
| 5     | Rojo/Verde/Azul/Blanco |
| 6     | Rojo                   |
| 7     | Verde                  |
| 8     | Azul                   |
| 9     | Blanco                 |
| 10    | Rojo/Verde             |
| 11    | Rojo/azul              |
| 12    | Rojo/blanco            |
| 13    | Verde/azul             |
| 14    | Verde/blanco           |
| 15    | Azul/blanco            |

INFORMACIÓN DE GARANTÍA

**IMPORTANTE, LEER**  
Consulte el manual o visite [www.byjasco.com](https://www.byjasco.com) para conocer las limitaciones y restricciones de la garantía y la información de registro del producto.  
Este producto, Jasco tiene una garantía limitada de 1 año. Comuníquese con nuestro Servicio de atención al consumidor con sede en EE. UU. al 1-800-654-8483 (opción 1), de lunes a viernes o [www.byjasco.com](https://www.byjasco.com) si la unidad resulta defectuosa dentro del periodo de garantía.

ESPECIFICACIONES

Modelo: 84121  
Rated input power: 11W Max (6.5W per tower)  
Operating temperature range: 32-113°F (0-45°C)

ADVERTENCIAS

- Este NO es un juguete y no está destinado a ser utilizado por niños. Se requiere la supervisión de un adulto en todo momento cuando haya niños cerca.
- Solo para uso en interiores. NO exponga este producto a la lluvia, la humedad o el agua bajo ninguna circunstancia.
- BAJO NINGUNA CIRCUNSTANCIA se debe intentar abrir la carcasa protectora ni operar el dispositivo si el producto sufrió daños.
- Al igual que con todas las fuentes de luz brillante, cuando utilice este dispositivo en áreas públicas generales sin supervisión, se recomienda que lo observe de cerca. Se restringe o impide el acceso a la luz y se dirigen los rayos hacia lugares donde no se espera la presencia de personas.
- Es responsabilidad del propietario/operador utilizar este dispositivo de conformidad con las leyes locales.

HECHO EN TAILANDIA  
Distribuido por Jasco Products Company LLC,  
10 E. Memorial Rd., Oklahoma City, OK 73134.  
PATENTES/PATENTES PENDIENTES  
[WWW.BYJASCO.COM/PATENTS](https://WWW.BYJASCO.COM/PATENTS)

App Store es una marca de servicio de Apple Inc.  
Google, Google Play y Google Home son marcas comerciales de Google LLC.  
Amazon, Alexa y todos los logotipos relacionados son marcas comerciales de Amazon.com, Inc. o sus afiliados.

**FCC Caution:**

This device complies with part 15 of the FCC Rules. Operation is subject to the following two conditions: (1) This device may not cause harmful interference, and (2) this device must accept any interference received, including interference that may cause undesired operation.

Any Changes or modifications not expressly approved by the party responsible for compliance could void the user's authority to operate the equipment.

**Note:** This equipment has been tested and found to comply with the limits for a Class B digital device, pursuant to part 15 of the FCC Rules. These limits are designed to provide reasonable protection against harmful interference in a residential installation. This equipment generates uses and can radiate radio frequency energy and, if not installed and used in accordance with the instructions, may cause harmful interference to radio communications. However, there is no guarantee that interference will not occur in a particular installation. If this equipment does cause harmful interference to radio or television reception, which can be determined by turning the equipment off and on, the user is encouraged to try to correct the interference by one or more of the following measures:

- Reorient or relocate the receiving antenna.
- Increase the separation between the equipment and receiver.
- Connect the equipment into an outlet on a circuit different from that to which the receiver is connected.
- Consult the dealer or an experienced radio/TV technician for help.

This equipment complies with FCC radiation exposure limits set forth for an uncontrolled environment. This equipment should be installed and operated with minimum distance 20cm between the radiator & your body.