

What's in the Box

Overview

Recharge Your Power Station

Powering Your Device

Light

LCD Screen Guide

The Anker App for Smart Control

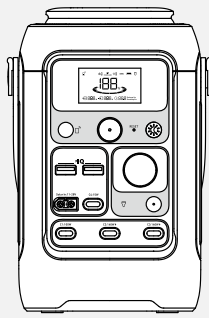
Install Firmware Update

FAQ

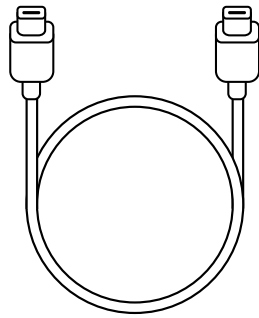
Specifications

USB Power Distribution Table

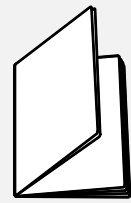
What's in the Box



Anker SOLIX C300 DC
Portable Power Station

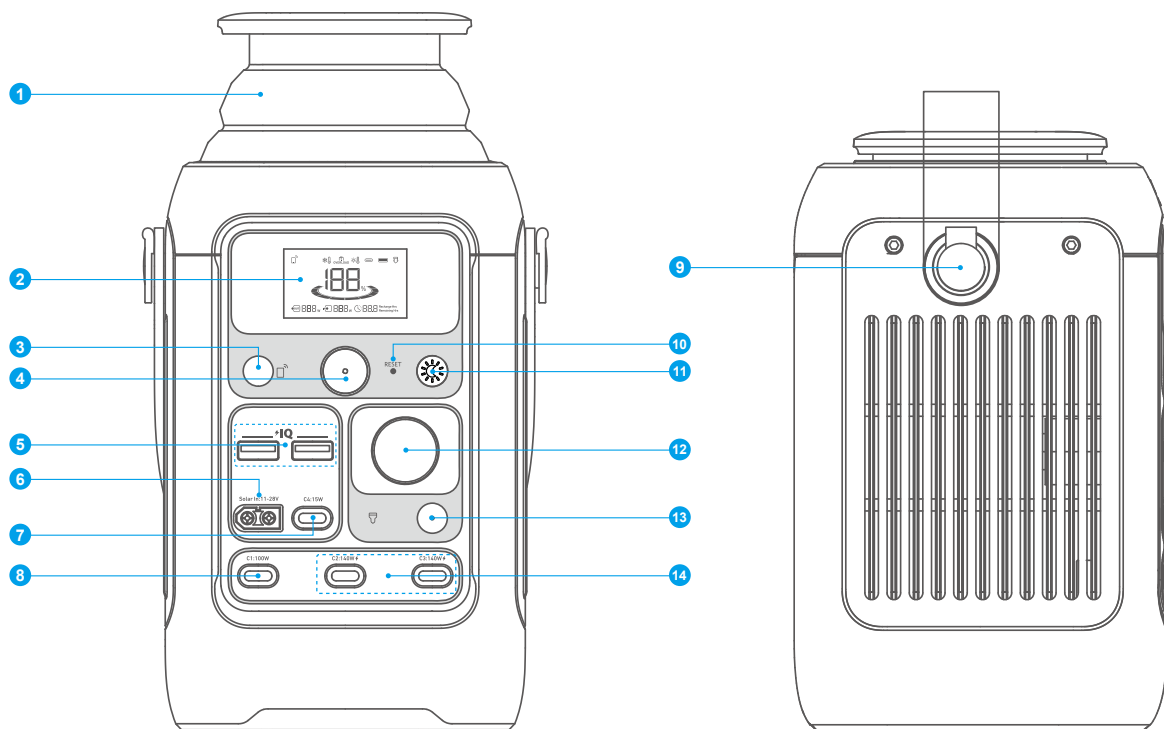


140W USB-C to USB-C
Charging Cable



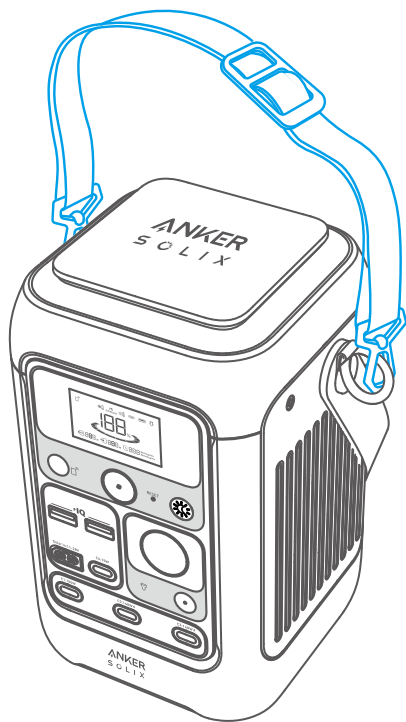
Important Safety
Instructions

Overview



- ❶ Retractable Light
 - ❷ LCD Screen
 - ❸ IOT Button
 - ❹ Main Power Button
 - ❺ 12W USB-A Output Port
 - ❻ Solar Input and Car Input
 - ❼ 15W USB-C Output Port
 - ❽ 100W USB-C Output Port
 - ❾ Handle*
 - ❿ Reset
 - ⓫ Light Button
 - ⓬ Car Socket
 - ⓭ Car Socket On / Off Button
 - ⓮ 140W USB-C Input / Output Port
- ⚡ indicates a bidirectional interface.

💡 *The handle attachments can also be used for Anker SOLIX adjustable straps (sold separately).

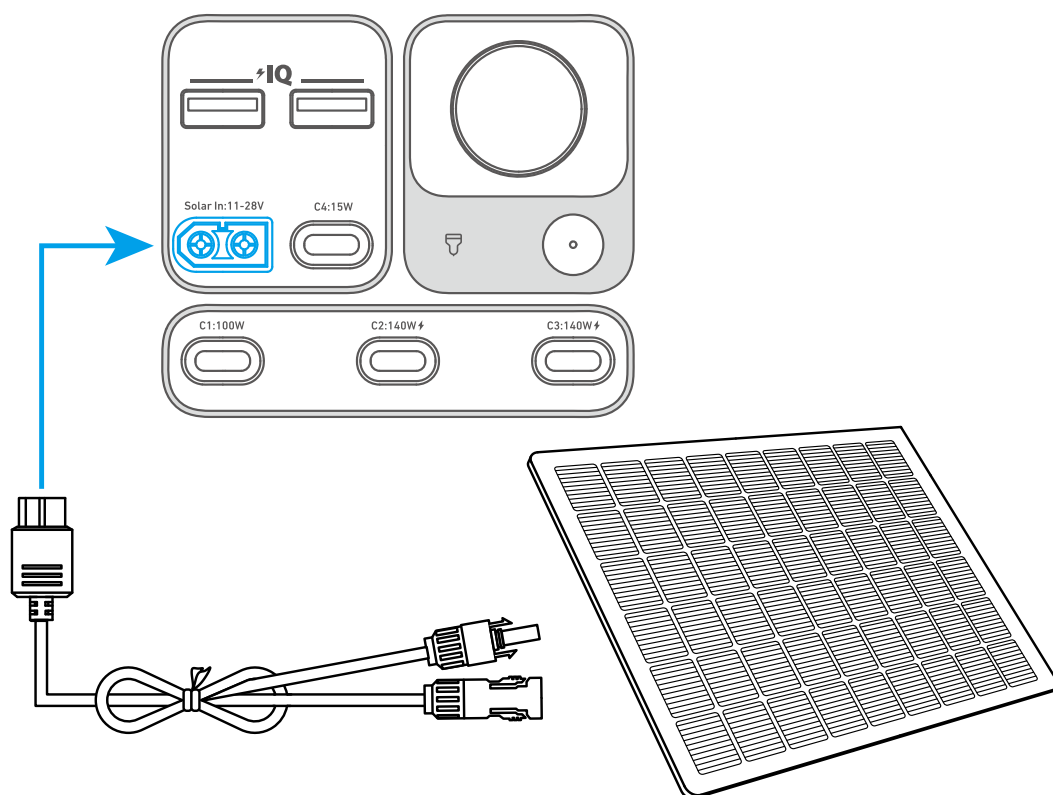


Recharge Your Power Station

Solar Panel Recharging (100W Max)

Recharge your power station with a maximum solar input of 100W by connecting up to one Anker 100W / 60W Solar Panel as shown in the figure with a solar charging cable*.

💡 The voltage of the solar panel should be 11V-28V, otherwise it will damage the power station.

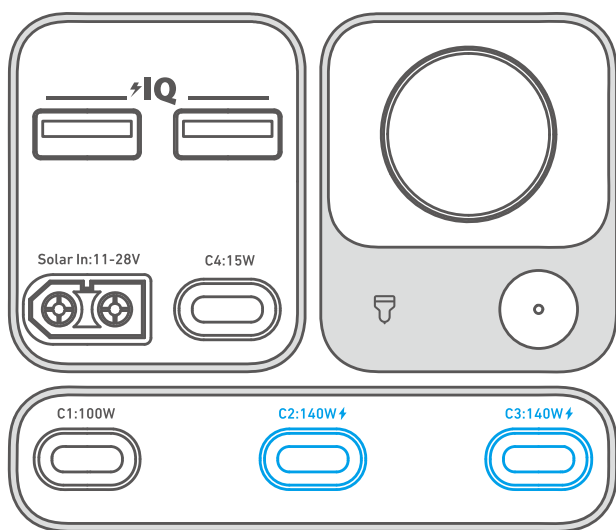


💡 *The solar charging cable is sold separately.

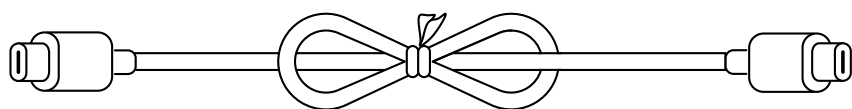
USB-C Recharging (280W Max)

Recharge* your power station by connecting to a wall adapter with a USB-C cable**.

💡 *Two 140W USB-C Input / Output Ports can be used to recharge simultaneously.

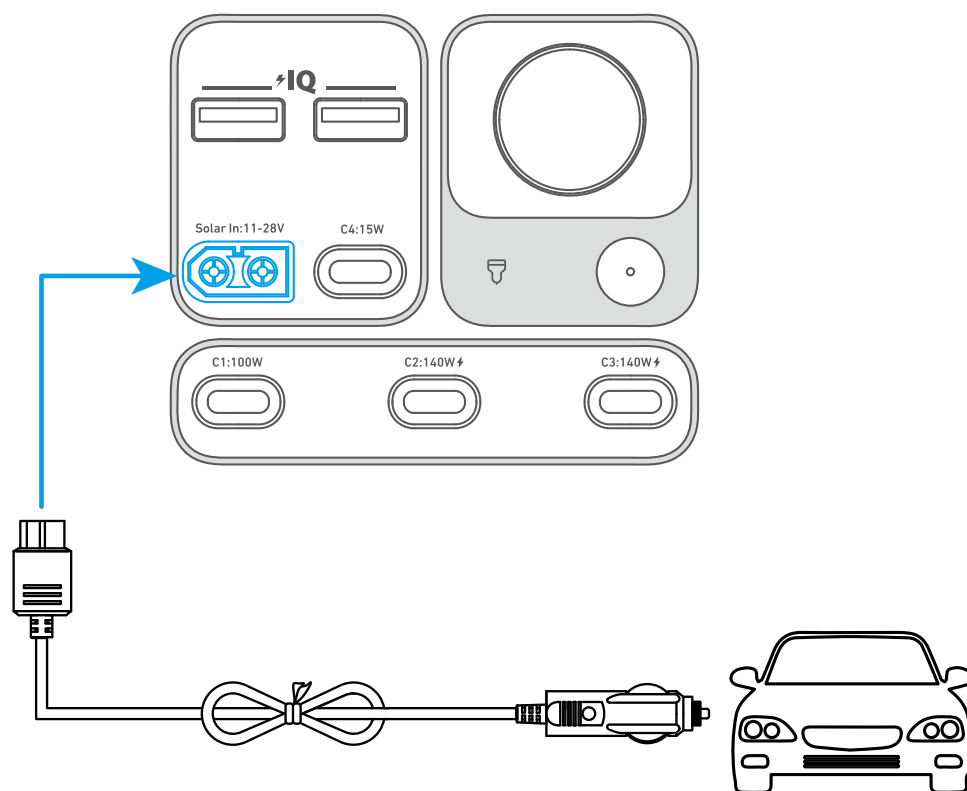


💡 **USB-C cables are sold separately. Use a 140W USB-C cable and 140W adapter for the best charging experience.



Car Recharging

Recharge your power station by connecting to a car's output port with the car charging cable*.

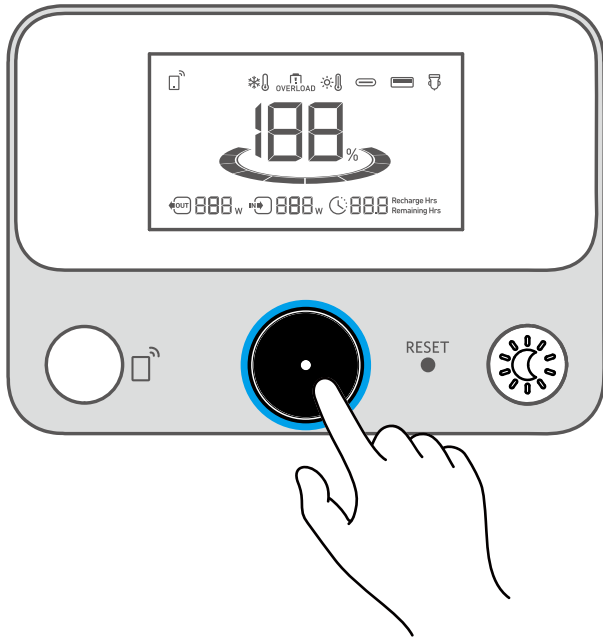


💡 *Car charging cable sold separately.

⚠️ When your portable power station only has 1% battery remaining, the "Remaining Battery" indicator will flicker to remind you to recharge.

Powering Your Device

Power On/Off



Press the main power button for 3 seconds to turn your power station on or off.

When the "Remaining Battery" indicator shows on the LCD screen, your power station is ready to charge devices.

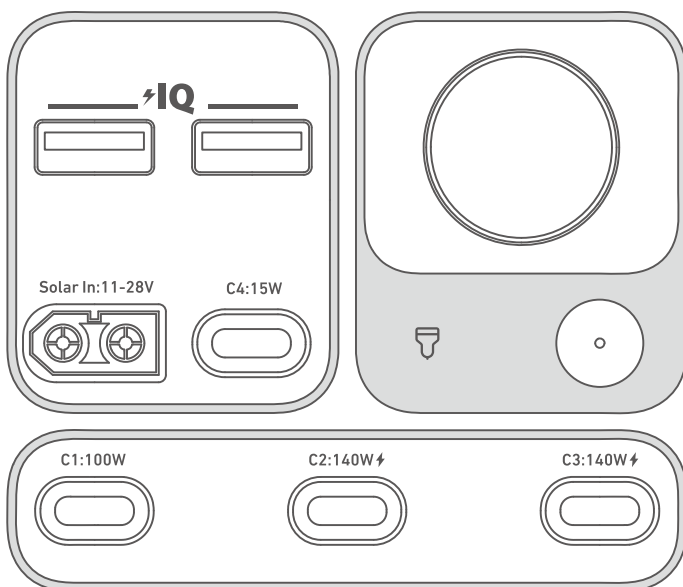


- When powered on, press the main power button to turn the screen on or off.
- The screen will automatically turn off after 30 seconds of lighting up. The auto-off time can be set in the Anker app.
- The power station will power off automatically if the output buttons are turned off and no power loads are detected for 2 hours. The standby duration can be set in the Anker app. We recommend not setting this to "never," so that the product can shut down on its own and save power in a long-term unused state.

USB Charging

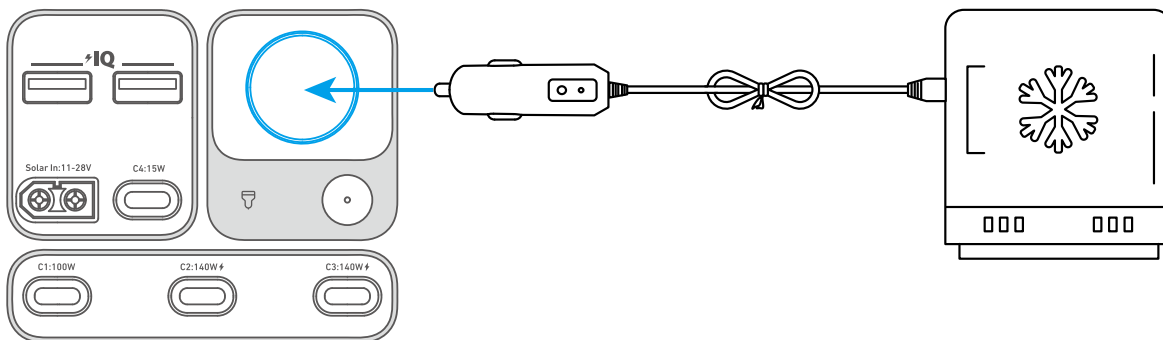
Connect your devices to the USB ports.

Note: The USB-C2 and USB-C3 output ports are a PS3 classification. There is a risk of fire when connecting additional equipment to the USB-C ports; safeguards against fire in the connected equipment or accessories should be considered. Only connect your portable power station to equipment or accessories that comply with clauses 6.3, 6.4 and 6.5 of IEC/EN IEC/ BS EN IEC 62368-1 standards. Additionally, use a USB-C 5A cable to achieve maximum power (20VDC/5A, 100W; 28VDC/5A, 140W).



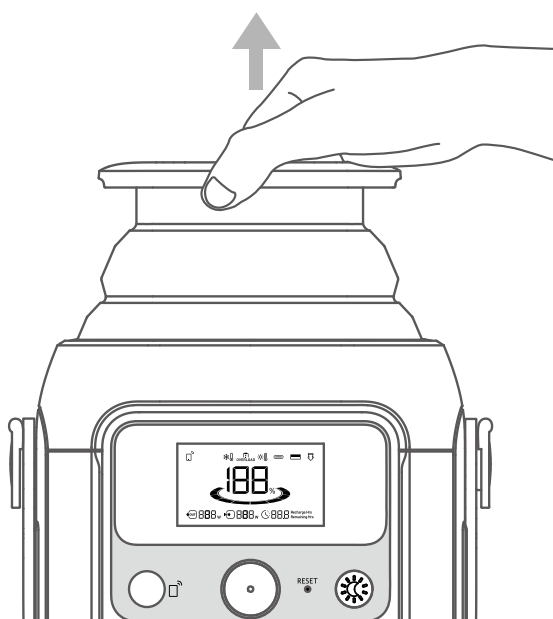
Car Socket Charging

Turn on the car socket and connect your devices to start charging.

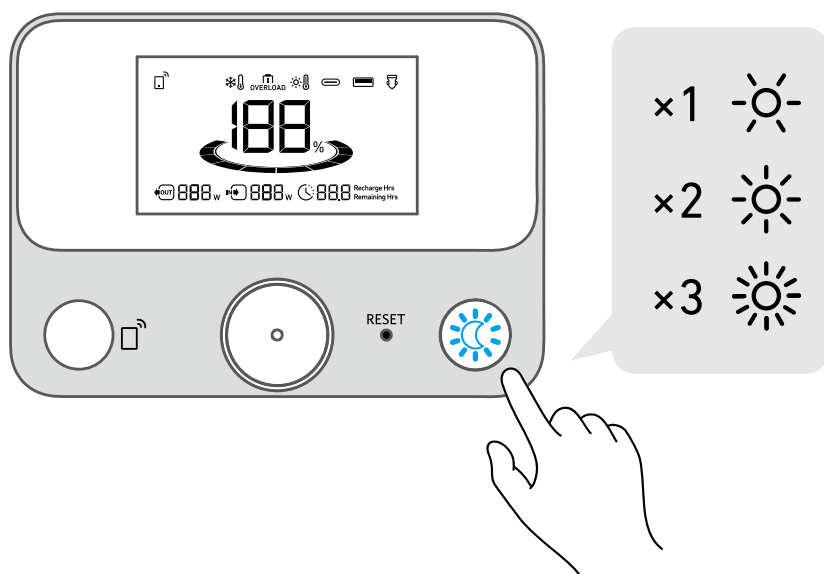


Light

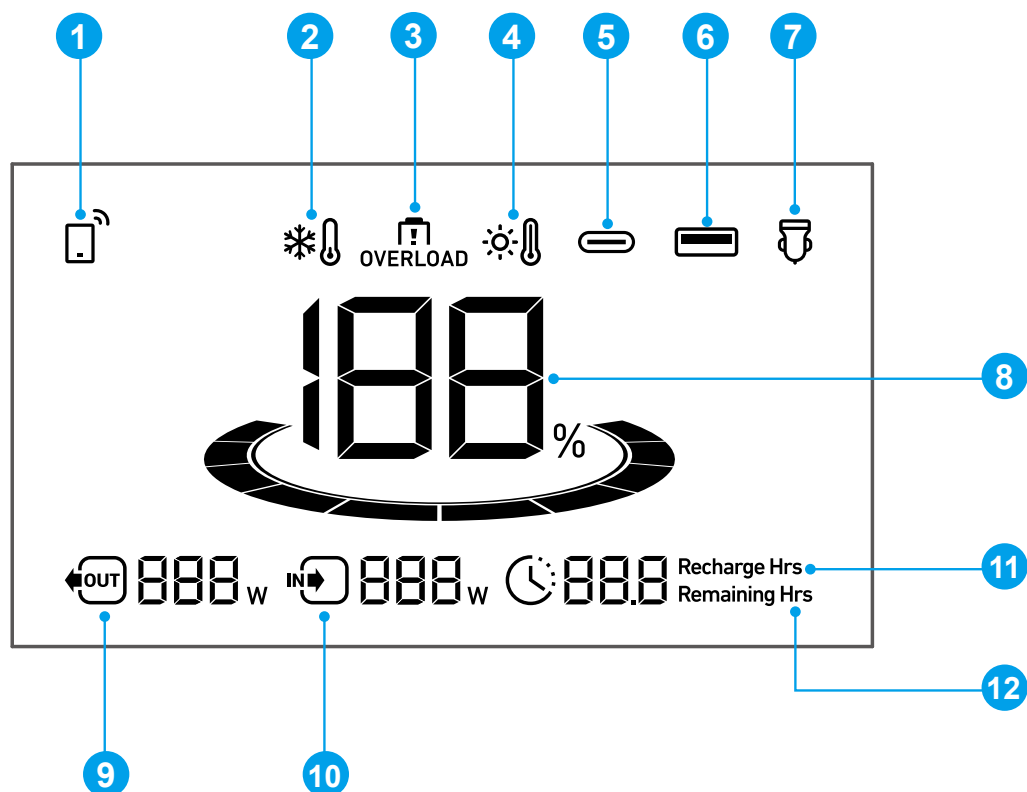
Pull up the retractable light.



Press the button to switch between brightness levels.



LCD Screen Guide



Press the IoT button once to turn on Bluetooth and Wi-Fi, and connect your devices through the app when this icon appears on the screen.

Press the IoT button for 2 seconds to turn off Bluetooth and Wi-Fi.

Press the IoT button for 7 seconds to reset Bluetooth and Wi-Fi.

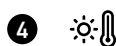


Low-Temperature Alert: When this icon shows, stop using the power station until the icon disappears.



Overload Warning:

This icon appears when a port is overloaded. The port will be turned off to avoid any damage. Please remove the device causing overload.



High-Temperature Alert:

When this icon shows, stop using the power station and let it cool down until the icon disappears.



USB-C Input / Output Port



USB-A Output Port



Car Charging



Remaining Battery for Power Station



Current Output Power



Current Input Power



Estimated Time to Fully Recharge

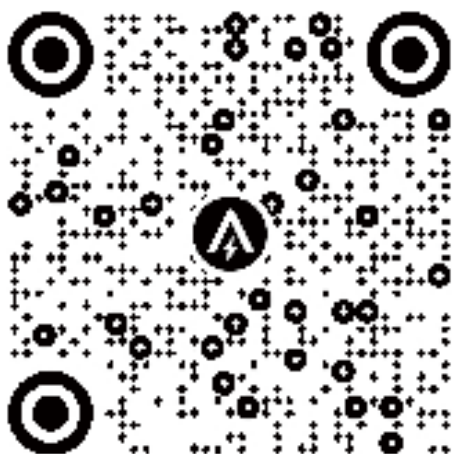


Estimated Time for Battery to Deplete

The Anker App for Smart Control

You can remotely control your power station using the Anker app.

1. Download the Anker app from the App Store (iOS devices) or Google Play (Android devices), or by scanning the QR code.



2. Connect the device to a network before using the app for the first time. After connecting successfully, you can connect your device off-grid.
3. **Firmware update:** You will be informed once a new firmware version is detected when you connect the power station to the app. During the update, ensure the power station is AC charged and connected to Wi-Fi or Bluetooth.

Install Firmware Update

You will receive a notification before updates are installed. Your power station must be charging and connected to Wi-Fi to complete the update.

FAQ

Q1: Can Anker SOLIX C300 DC Portable Power Station power a CPAP machine?

Yes.

Q2: What should I do when using a solar charger to charge Anker SOLIX C300 DC Portable Power Station?

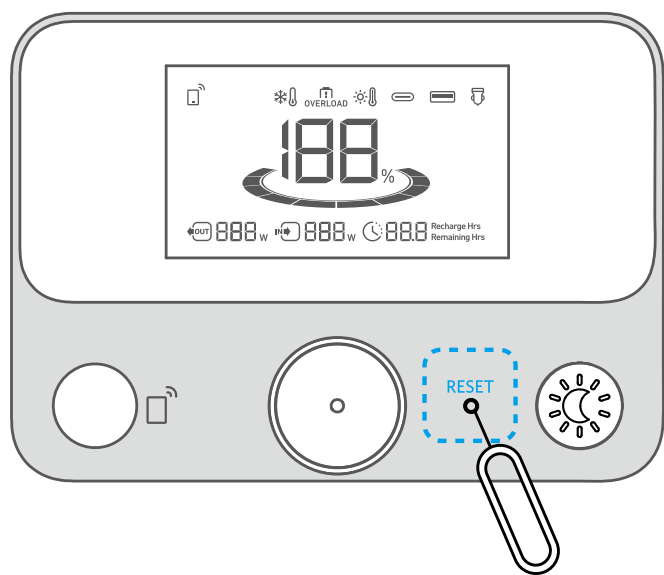
The solar input supports an 11-28V solar charger with an XT-60 connector. We recommend using Anker 100W / 60W Solar Panel for the best compatibility.

Q3: Can the USB-C ports be used to charge Anker SOLIX C300 DC Portable Power Station (input only), or are they output only?

The USB-C1 and USB-C4 ports are output only. The USB-C2 and USB-C3 supports output and input.

Q4: How do I reset Anker SOLIX C300 DC Portable Power Station?

If your power station isn't working correctly, insert a paper clip or pin into the reset hole for 1 second for a factory reset. If the power station still doesn't work, please contact support@anker.com.



Q5: Why is the power station not working after it hasn't been used for a long time?

If the power station is stored at a low capacity for a long time, lithium batteries will self-consume power which may lead to a quick discharge. This often leads to poor conductivity and a reduced battery lifespan that causes the battery not to work.

Q6: How should I store and maintain the power station?

When storing your portable power station, please make sure that you:

- 1) Turn off the main power button.
- 2) Store the power station in a dry and cool environment.
- 3) Check the remaining battery capacity each week. If the battery level is below 30%, fully charge the power station. Don't forget to charge it to 100% once every 3 months.

Q7: Does the power station have to be used upright?

Yes, the product needs to be used and stored upright.

Specifications

Cell Capacity	288Wh
Solar Panel Input	11-28V = 8.2A Max (100W Max)
USB-C2 Input	9V = 3A / 15V = 3A / 20V = 3A / 20V = 5A / 28V = 5A (140W Max)
USB-C3 Input	9V = 3A / 15V = 3A / 20V = 3A / 20V = 5A / 28V = 5A (140W Max)
Car Charger Output	12V = 10A
USB-A Output	5V = 2.4A (12W)
USB-C1 Output	5V = 3A / 9V = 3A / 15V = 3A / 20V = 5A (100W Max)
USB-C2 Output	5V = 3A / 9V = 3A / 15V = 3A / 20V = 3A / 20V = 5A / 28V = 5A (140W Max)

USB-C3 Output	5V = 3A / 9V = 3A / 15V = 3A / 20V = 3A / 20V = 5A / 28V = 5A (140W Max)
USB-C4 Output	5V = 3A (15W Max)
USB-A and USB-C4 Total Output	5V = 4A (20W)
Total Output	300W
Discharging Temperature	-20°C-40°C / -4°F-104°F
Charging Temperature	0°C-40°C / 32°F-104°F
Size	12.4×12.0×20.0 cm / 4.88×4.72×78.74 in
Net Weight	2.8 kg / 6.17 lb

USB Power Distribution Table

1 Port	USB-A1/A2: 12W
	USB-C4: 15W
	USB-C4: 100W
	USB-C2/C3: 140W
	Car Charger Output: 120W
2 Ports	USB-C1 + USB-A1/A2: 100W+20W
	USB-A1/A2 + USB-C2/C3: 140W+20W
	USB-C1 + Car Charger Output: 100W+120W
	USB-C2 + USB-C3: 140W+120W
3 Ports	USB-C1 + USB-C2/C3 + USB-A1/A2: 100W+140W+20W
	USB-C2 + USB-C3 + USB-A1/A2: 140W+140W+20W
	USB-C1 + USB-C2/C3 + Car Charger Output: 100W+100W+120W
	USB-C2 + USB-C3 + Car Charger Output: 140W+60W+120W
	USB-C1/C2/C3 + USB-A1/A2 + Car Charger Output: 100W/140W/140W + 20W + 120W
4 Ports	USB-C1 + USB-C2/C3 + USB-A1/A2 + Car Charger Output: 100W + 30W + 20W + 120W
	USB-C2 + USB-C3 + USB-A1/A2 + Car Charger Output: 100W + 30W + 20W + 120W
	USB-C1 + USB-C2 + USB-C3 + USB-A1/A2: 30W + 100W + 140W + 20W
	USB-C1 + USB-C2 + USB-C3 + Car Charger Output: 30W + 30W + 100W + 120W
5 Ports	USB-C1 + USB-C2 + USB-C3 + USB-A1/A2 + Car Charger Output: 30W+60W+60W+20W+120W