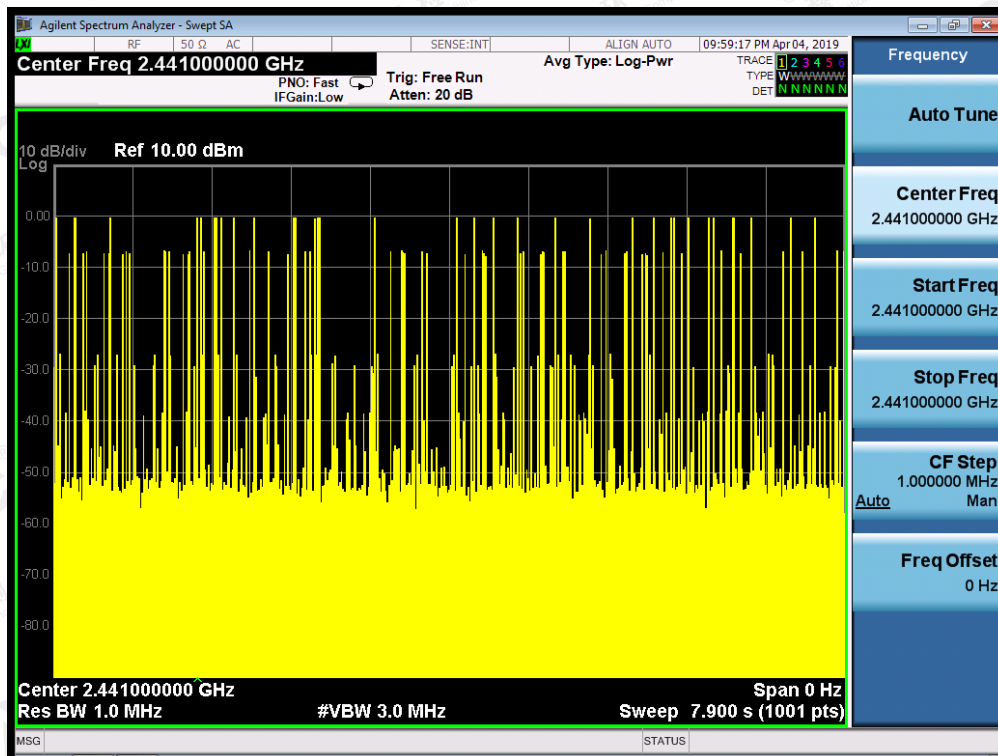
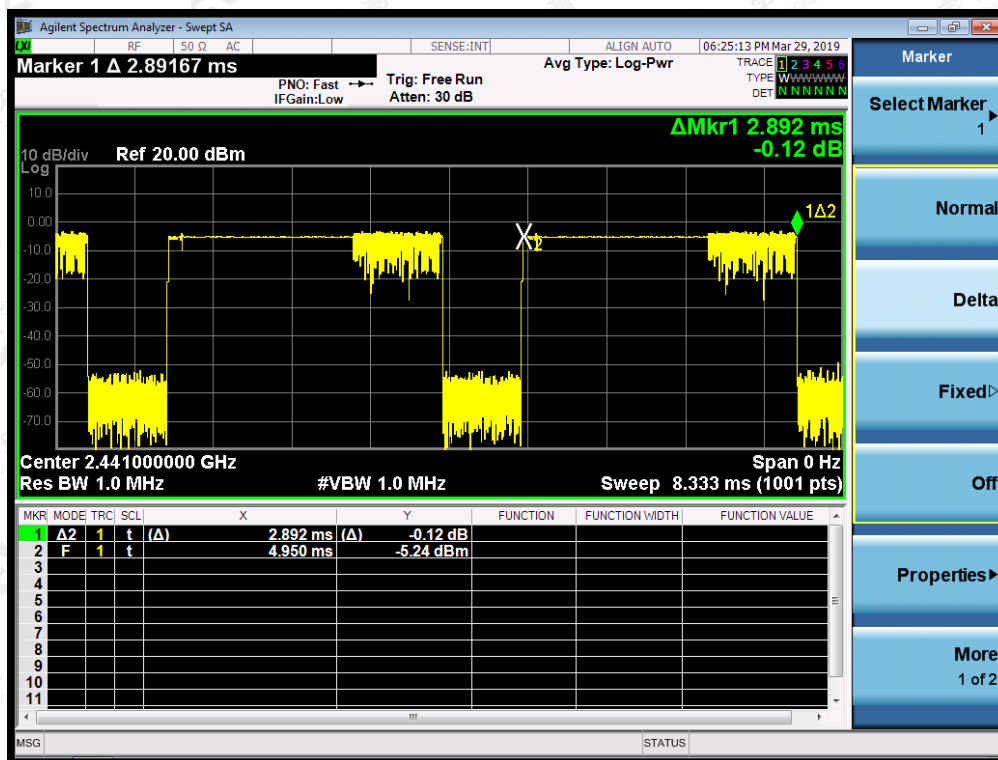
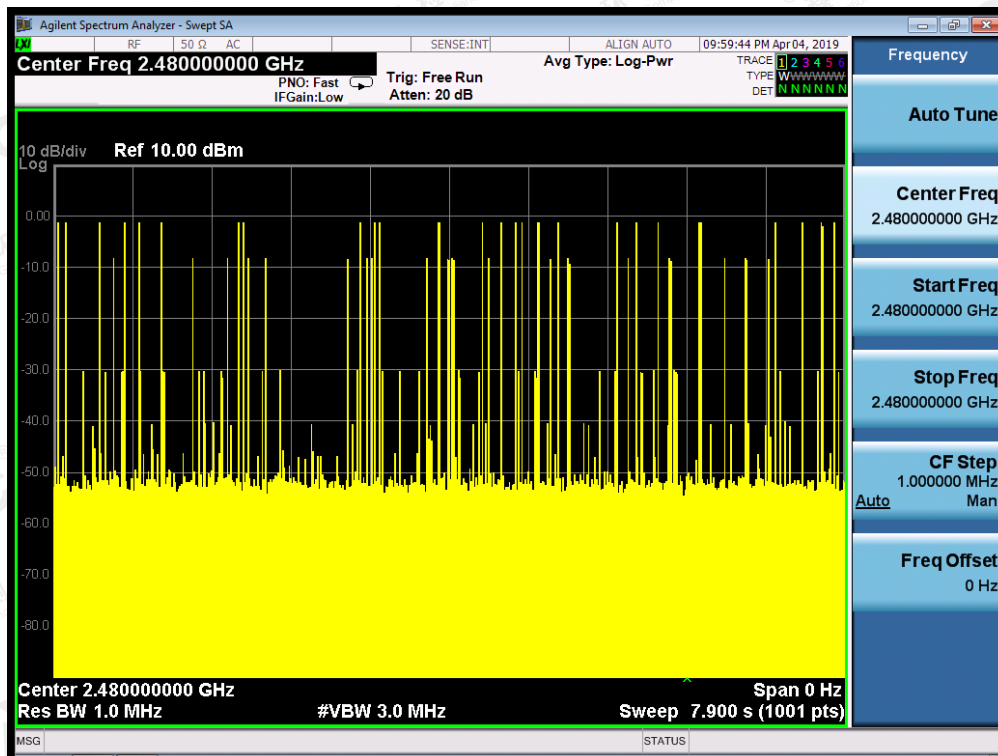
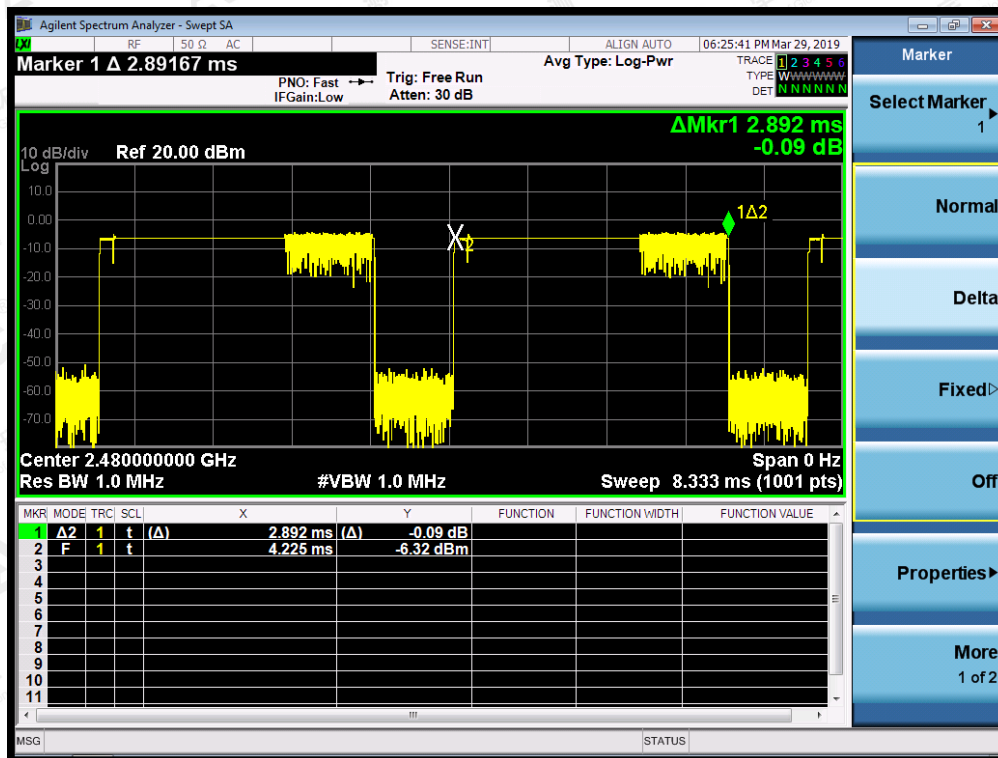


TEST PLOT OF MIDDLE CHANNEL



The results shown in this test report refer only to the sample(s) tested unless otherwise stated and the sample(s) are retained for 30 days only. The document is issued by AGC, this document cannot be reproduced except in full with our prior written permission. The more details and the authenticity of the report will be confirmed at <http://www.agc-cert.com>.

TEST PLOT OF HIGH CHANNEL



The results shown in this test report refer only to the sample(s) tested unless otherwise stated and the sample(s) are retained for 30 days only. The document is issued by AGC, this document cannot be reproduced except in full with our prior written permission. The more details and the authenticity of the report will be confirmed at <http://www.agc-cert.com>.

13. FREQUENCY SEPARATION

13.1. MEASUREMENT PROCEDURE

The EUT shall have its hopping function enabled. Use the following spectrum analyzer settings:

1. Span: Wide enough to capture the peaks of two adjacent channels.
2. RBW: Start with the RBW set to approximately 30% of the channel spacing; adjust as necessary to best identify the center of each individual channel.
3. Video (or average) bandwidth (VBW) \geq RBW.
4. Sweep: Auto. e) Detector function: Peak. f) Trace: Max hold. g) Allow the trace to stabilize.

Use the marker-delta function to determine the separation between the peaks of the adjacent channels.

13.2. TEST SETUP (BLOCK DIAGRAM OF CONFIGURATION)

Same as described in section 6.2

13.3. MEASUREMENT EQUIPMENT USED

The same as described in section 6.3

13.4. LIMITS AND MEASUREMENT RESULT

| CHANNEL | CHANNEL SEPARATION | LIMIT | RESULT |
|-----------|--------------------|-------------------------------|--------|
| | KHz | KHz | |
| CH01-CH02 | 1000 | ≥ 25 KHz or 2/3 20 dB BW | Pass |

TEST PLOT FOR FREQUENCY SEPARATION



Note: The 8-DPSK modulation is the worst case and recorded in the report.

The results shown in this test report refer only to the sample(s) tested unless otherwise stated and the sample(s) are retained for 30 days only. The document is issued by AGC, this document cannot be reproduced except in full with our prior written permission. The more details and the authenticity of the report will be confirmed at <http://www.agc-cert.com>.

14. FCC LINE CONDUCTED EMISSION TEST

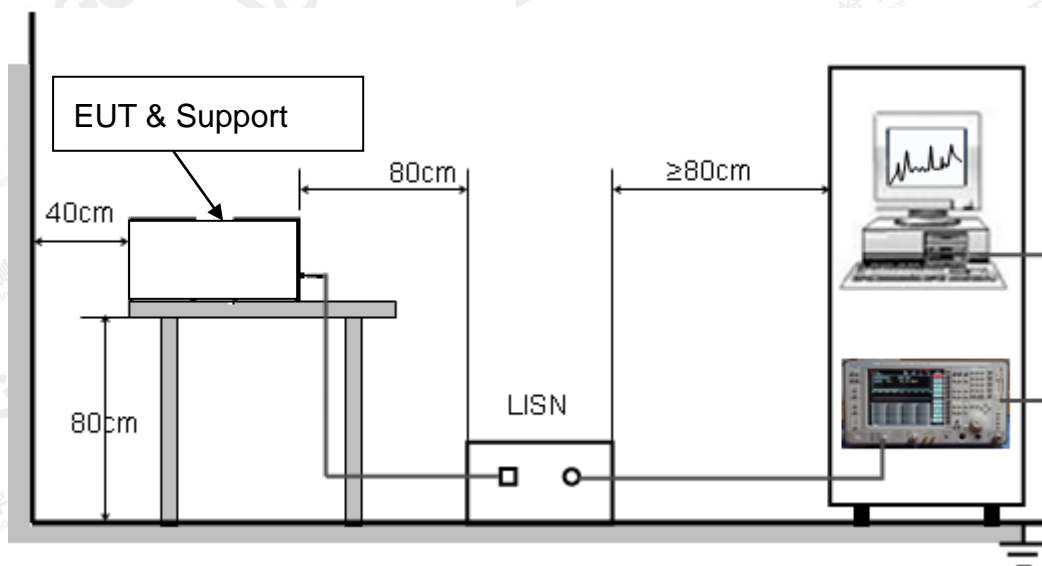
14.1. LIMITS OF LINE CONDUCTED EMISSION TEST

| Frequency | Maximum RF Line Voltage | |
|---------------|-------------------------|----------------|
| | Q.P.(dBuV) | Average(dBuV) |
| 150kHz~500kHz | 66-56 | 56-46 |
| 500kHz~5MHz | 56 | 46 |
| 5MHz~30MHz | 60 | 50 |

Note:

1. The lower limit shall apply at the transition frequency.
2. The limit decreases linearly with the logarithm of the frequency in the range 0.15 MHz to 0.50 MHz.

14.2. BLOCK DIAGRAM OF LINE CONDUCTED EMISSION TEST



The results shown in this test report refer only to the sample(s) tested unless otherwise stated and the sample(s) are retained for 30 days only. The document is issued by AGC, this document cannot be reproduced except in full with our prior written permission. The more details and the authenticity of the report will be confirmed at <http://www.agc-cert.com>.

14.3. PRELIMINARY PROCEDURE OF LINE CONDUCTED EMISSION TEST

1. The equipment was set up as per the test configuration to simulate typical actual usage per the user's manual. When the EUT is a tabletop system, a wooden table with a height of 0.8 meters is used and is placed on the ground plane as per ANSI C63.10 (see Test Facility for the dimensions of the ground plane used). When the EUT is a floor-standing equipment, it is placed on the ground plane which has a 3-12 mm non-conductive covering to insulate the EUT from the ground plane.
2. Support equipment, if needed, was placed as per ANSI C63.10.
3. All I/O cables were positioned to simulate typical actual usage as per ANSI C63.10.
4. All support equipments received AC120V/60Hz power from a LISN, if any.
5. The EUT received DC 15V power from adapter which received AC120V/60Hz power from a LISN.
6. The test program was started. Emissions were measured on each current carrying line of the EUT using a spectrum Analyzer / Receiver connected to the LISN powering the EUT. The LISN has two monitoring points: Line 1 (Hot Side) and Line 2 (Neutral Side). Two scans were taken: one with Line 1 connected to Analyzer / Receiver and Line 2 connected to a 50 ohm load; the second scan had Line 1 connected to a 50 ohm load and Line 2 connected to the Analyzer / Receiver.
7. Analyzer / Receiver scanned from 150 kHz to 30MHz for emissions in each of the test modes.
8. During the above scans, the emissions were maximized by cable manipulation.
9. The test mode(s) were scanned during the preliminary test.

Then, the EUT configuration and cable configuration of the above highest emission level were recorded for reference of final testing.

14.4. FINAL PROCEDURE OF LINE CONDUCTED EMISSION TEST

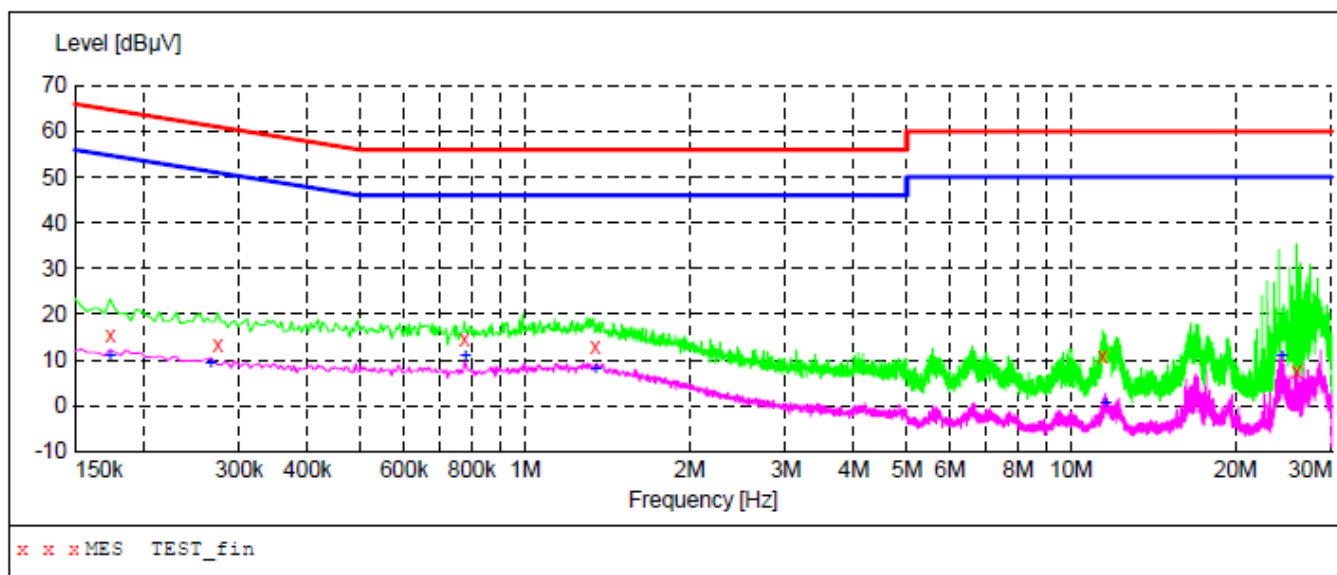
1. EUT and support equipment was set up on the test bench as per step 2 of the preliminary test.
2. A scan was taken on both power lines, Line 1 and Line 2, recording at least the six highest emissions. Emission frequency and amplitude were recorded into a computer in which correction factors were used to calculate the emission level and compare reading to the applicable limit. If EUT emission level was less -2dB to the A.V. limit in Peak mode, then the emission signal was re-checked using Q.P and Average detector.
3. The test data of the worst case condition(s) was reported on the Summary Data page.

The results shown in this test report refer only to the sample(s) tested unless otherwise stated and the sample(s) are retained for 30 days only. The document is issued by AGC, this document cannot be reproduced except in full with our prior written permission. The more details and the authenticity of the report will be confirmed at <http://www.agc-cert.com>.

14.5. TEST RESULT OF LINE CONDUCTED EMISSION TEST

Adapter 1

Line Conducted Emission Test Line 1-L



MEASUREMENT RESULT: "TEST_fin"

3/22/2019 9:40AM

| Frequency MHz | Level dBμV | Transd dB | Limit dBμV | Margin dB | Detector | Line | PE |
|------------------|---------------|--------------|---------------|--------------|----------|------|-----|
| 0.174000 | 15.50 | 10.3 | 65 | 49.3 | QP | L1 | FLO |
| 0.274000 | 13.30 | 10.2 | 61 | 47.7 | QP | L1 | FLO |
| 0.774000 | 14.50 | 10.3 | 56 | 41.5 | QP | L1 | FLO |
| 1.346000 | 13.10 | 10.4 | 56 | 42.9 | QP | L1 | FLO |
| 11.418000 | 10.70 | 10.8 | 60 | 49.3 | QP | L1 | FLO |
| 25.882000 | 7.50 | 11.2 | 60 | 52.5 | QP | L1 | FLO |

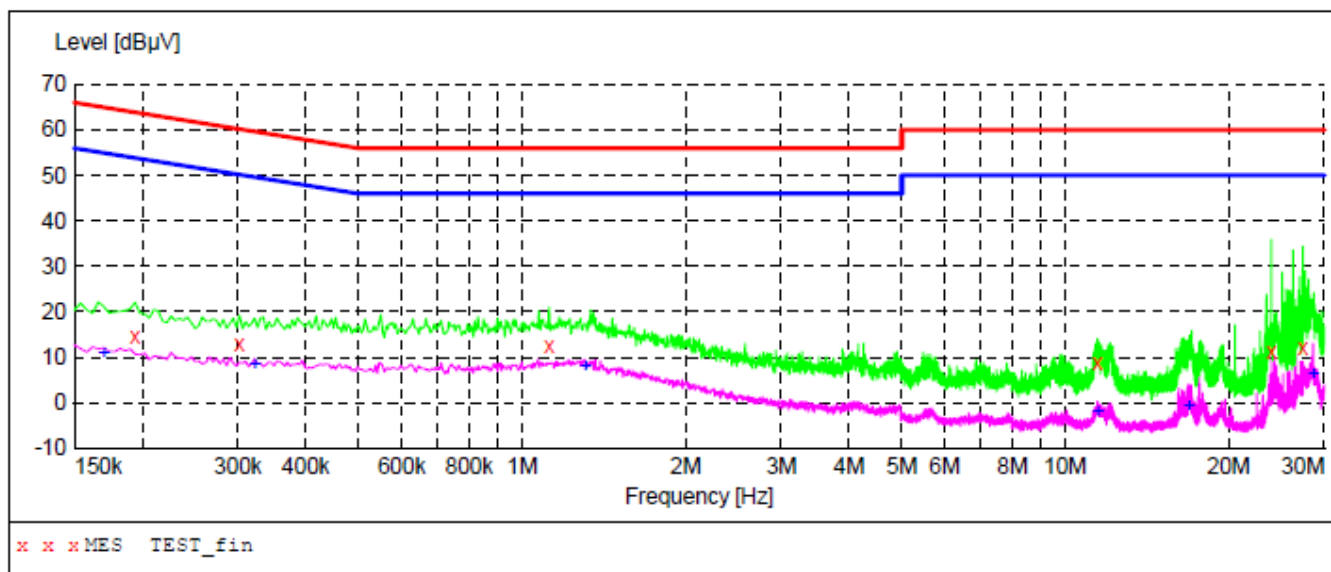
MEASUREMENT RESULT: "TEST_fin2"

3/22/2019 9:40AM

| Frequency MHz | Level dBμV | Transd dB | Limit dBμV | Margin dB | Detector | Line | PE |
|------------------|---------------|--------------|---------------|--------------|----------|------|-----|
| 0.174000 | 11.00 | 10.3 | 55 | 43.8 | AV | L1 | FLO |
| 0.266000 | 9.00 | 10.2 | 51 | 42.2 | AV | L1 | FLO |
| 0.778000 | 10.80 | 10.3 | 46 | 35.2 | AV | L1 | FLO |
| 1.346000 | 8.10 | 10.4 | 46 | 37.9 | AV | L1 | FLO |
| 11.558000 | 0.40 | 10.8 | 50 | 49.6 | AV | L1 | FLO |
| 24.350000 | 10.90 | 11.1 | 50 | 39.1 | AV | L1 | FLO |

The results shown in this test report refer only to the sample(s) tested unless otherwise stated and the sample(s) are retained for 30 days only. The document is issued by AGC, this document cannot be reproduced except in full with our prior written permission. The more details and the authenticity of the report will be confirmed at <http://www.agc-cert.com>.

Line Conducted Emission Test Line 2-N



MEASUREMENT RESULT: "TEST_fin"

3/22/2019 9:19AM

| Frequency MHz | Level dBμV | Transd dB | Limit dBμV | Margin dB | Detector | Line | PE |
|------------------|---------------|--------------|---------------|--------------|----------|------|-----|
| 0.194000 | 14.60 | 10.3 | 64 | 49.3 | QP | N | FLO |
| 0.302000 | 12.80 | 10.2 | 60 | 47.4 | QP | N | FLO |
| 1.122000 | 12.60 | 10.4 | 56 | 43.4 | QP | N | FLO |
| 11.446000 | 8.70 | 10.8 | 60 | 51.3 | QP | N | FLO |
| 23.966000 | 11.10 | 11.1 | 60 | 48.9 | QP | N | FLO |
| 27.402000 | 11.90 | 11.2 | 60 | 48.1 | QP | N | FLO |

MEASUREMENT RESULT: "TEST_fin2"

3/22/2019 9:19AM

| Frequency MHz | Level dBμV | Transd dB | Limit dBμV | Margin dB | Detector | Line | PE |
|------------------|---------------|--------------|---------------|--------------|----------|------|-----|
| 0.170000 | 10.90 | 10.3 | 55 | 44.1 | AV | N | FLO |
| 0.322000 | 8.50 | 10.2 | 50 | 41.2 | AV | N | FLO |
| 1.306000 | 8.00 | 10.4 | 46 | 38.0 | AV | N | FLO |
| 11.478000 | -1.80 | 10.8 | 50 | 51.8 | AV | N | FLO |
| 16.870000 | -0.80 | 10.9 | 50 | 50.8 | AV | N | FLO |
| 28.602000 | 6.30 | 11.2 | 50 | 43.7 | AV | N | FLO |

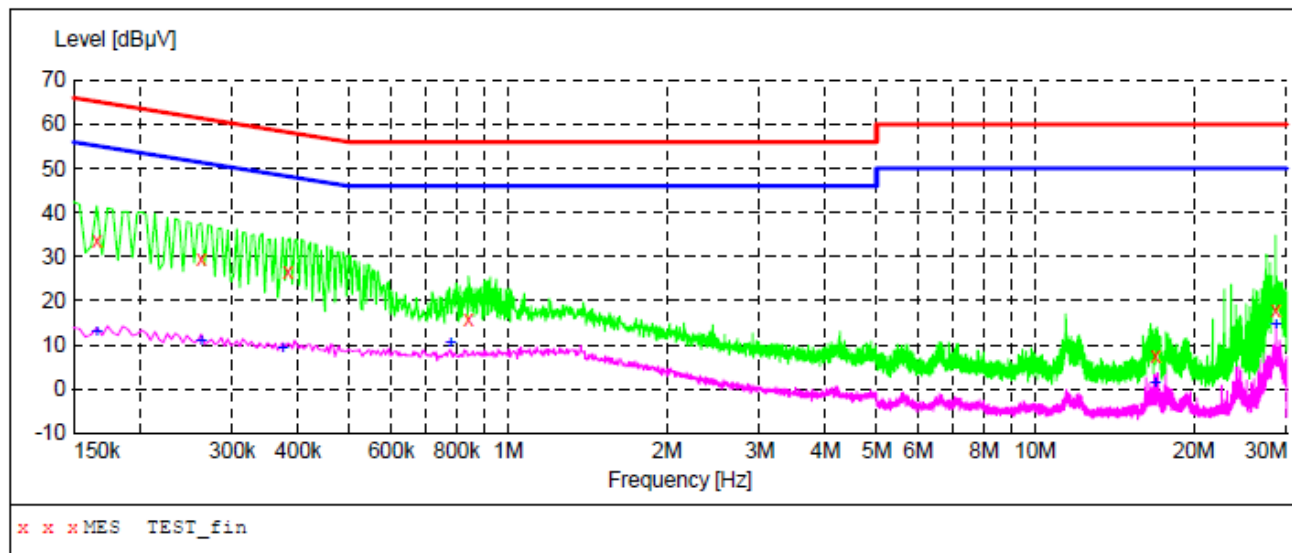
RESULT: PASS

Note: All the test modes had been tested, the mode 1 was the worst case. Only the data of the worst case would be record in this test report.

The results shown in this test report refer only to the sample(s) tested unless otherwise stated and the sample(s) are retained for 30 days only. The document is issued by AGC, this document cannot be reproduced except in full with our prior written permission. The more details and the authenticity of the report will be confirmed at <http://www.agc-cert.com>.

Adapter 2

Line Conducted Emission Test Line 1-L



MEASUREMENT RESULT: "TEST_fin"

3/22/2019 9:02AM

| Frequency MHz | Level dBμV | Transd dB | Limit dBμV | Margin dB | Detector | Line | PE |
|------------------|---------------|--------------|---------------|--------------|----------|------|-----|
| 0.166000 | 33.60 | 10.3 | 65 | 31.6 | QP | L1 | FLO |
| 0.262000 | 29.60 | 10.2 | 61 | 31.8 | QP | L1 | FLO |
| 0.382000 | 26.40 | 10.3 | 58 | 31.8 | QP | L1 | FLO |
| 0.842000 | 16.00 | 10.4 | 56 | 40.0 | QP | L1 | FLO |
| 16.902000 | 7.60 | 10.9 | 60 | 52.4 | QP | L1 | FLO |
| 28.578000 | 18.10 | 11.2 | 60 | 41.9 | QP | L1 | FLO |

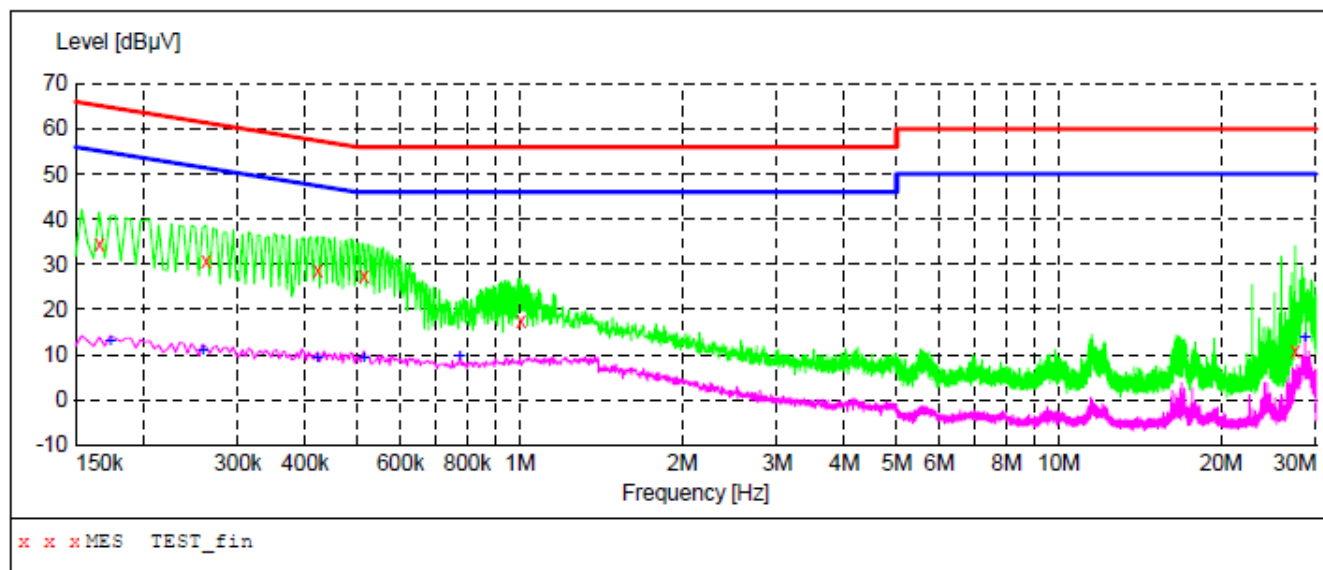
MEASUREMENT RESULT: "TEST_fin2"

3/22/2019 9:02AM

| Frequency MHz | Level dBμV | Transd dB | Limit dBμV | Margin dB | Detector | Line | PE |
|------------------|---------------|--------------|---------------|--------------|----------|------|-----|
| 0.166000 | 13.10 | 10.3 | 55 | 42.1 | AV | L1 | FLO |
| 0.262000 | 10.80 | 10.2 | 51 | 40.6 | AV | L1 | FLO |
| 0.374000 | 9.40 | 10.3 | 48 | 39.0 | AV | L1 | FLO |
| 0.778000 | 10.50 | 10.3 | 46 | 35.5 | AV | L1 | FLO |
| 16.898000 | 1.40 | 10.9 | 50 | 48.6 | AV | L1 | FLO |
| 28.634000 | 14.60 | 11.2 | 50 | 35.4 | AV | L1 | FLO |

The results shown in this test report refer only to the sample(s) tested unless otherwise stated and the sample(s) are retained for 30 days only. The document is issued by AGC, this document cannot be reproduced except in full with our prior written permission. The more details and the authenticity of the report will be confirmed at <http://www.agc-cert.com>.

Line Conducted Emission Test Line 2-N



MEASUREMENT RESULT: "TEST_fin"

3/22/2019 8:57AM

| Frequency MHz | Level dBμV | Transd dB | Limit dBμV | Margin dB | Detector | Line | PE |
|------------------|---------------|--------------|---------------|--------------|----------|------|-----|
| 0.166000 | 34.30 | 10.3 | 65 | 30.9 | QP | N | FLO |
| 0.262000 | 30.90 | 10.2 | 61 | 30.5 | QP | N | FLO |
| 0.422000 | 28.60 | 10.3 | 57 | 28.8 | QP | N | FLO |
| 0.514000 | 27.40 | 10.3 | 56 | 28.6 | QP | N | FLO |
| 1.006000 | 17.30 | 10.4 | 56 | 38.7 | QP | N | FLO |
| 27.430000 | 10.70 | 11.2 | 60 | 49.3 | QP | N | FLO |

MEASUREMENT RESULT: "TEST_fin2"

3/22/2019 8:57AM

| Frequency MHz | Level dBμV | Transd dB | Limit dBμV | Margin dB | Detector | Line | PE |
|------------------|---------------|--------------|---------------|--------------|----------|------|-----|
| 0.174000 | 12.90 | 10.3 | 55 | 41.9 | AV | N | FLO |
| 0.258000 | 11.00 | 10.2 | 52 | 40.5 | AV | N | FLO |
| 0.422000 | 9.40 | 10.3 | 47 | 38.0 | AV | N | FLO |
| 0.514000 | 9.00 | 10.3 | 46 | 37.0 | AV | N | FLO |
| 0.774000 | 9.70 | 10.3 | 46 | 36.3 | AV | N | FLO |
| 28.634000 | 13.90 | 11.2 | 50 | 36.1 | AV | N | FLO |

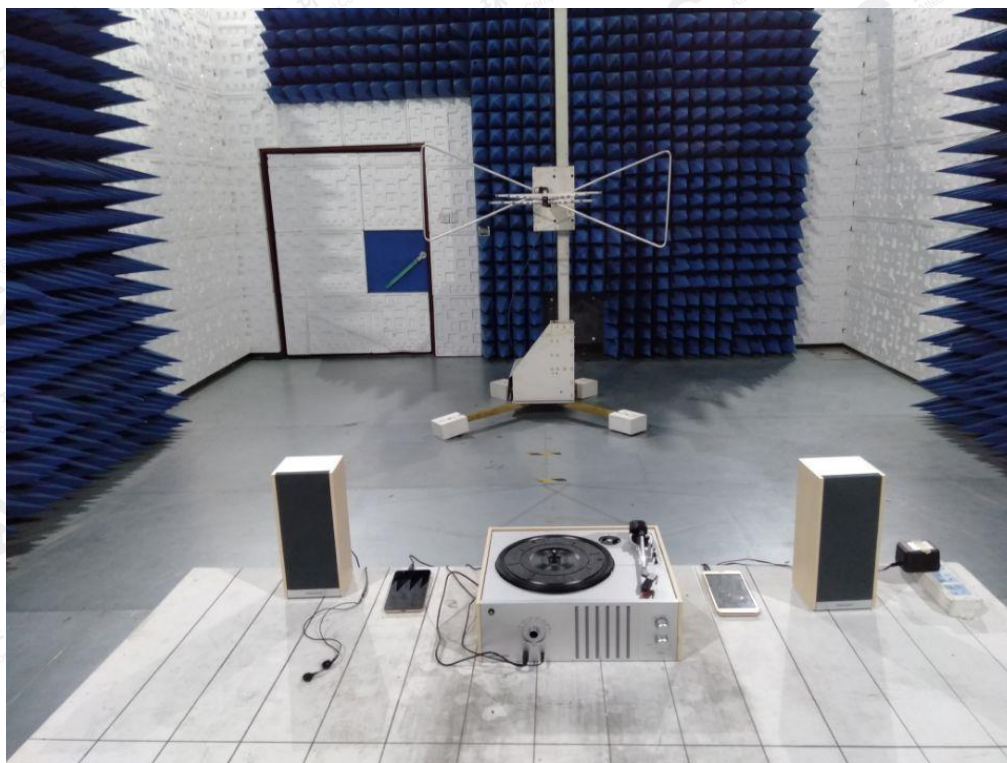
RESULT: PASS

Note: All the test modes had been tested, the mode 7 was the worst case. Only the data of the worst case would be record in this test report.

The results shown in this test report refer only to the sample(s) tested unless otherwise stated and the sample(s) are retained for 30 days only. The document is issued by AGC, this document cannot be reproduced except in full with our prior written permission. The more details and the authenticity of the report will be confirmed at <http://www.agc-cert.com>.

APPENDIX A: PHOTOGRAPHS OF TEST SETUP

RADIATED EMISSION TEST SETUP BELOW 1GHZ



RADIATED EMISSION TEST SETUP ABOVE 1GHZ



The results shown in this test report refer only to the sample(s) tested unless otherwise stated and the sample(s) are retained for 30 days only. The document is issued by AGC, this document cannot be reproduced except in full with our prior written permission. The more details and the authenticity of the report will be confirmed at <http://www.agc-cert.com>.

CONDUCTED EMISSION TEST SETUP



The results shown in this test report refer only to the sample(s) tested unless otherwise stated and the sample(s) are retained for 30 days only. The document is issued by AGC, this document cannot be reproduced except in full with our prior written permission. The more details and the authenticity of the report will be confirmed at <http://www.agc-cert.com>.

APPENDIX B: PHOTOGRAPHS OF EUT

TOTAL VIEW OF EUT

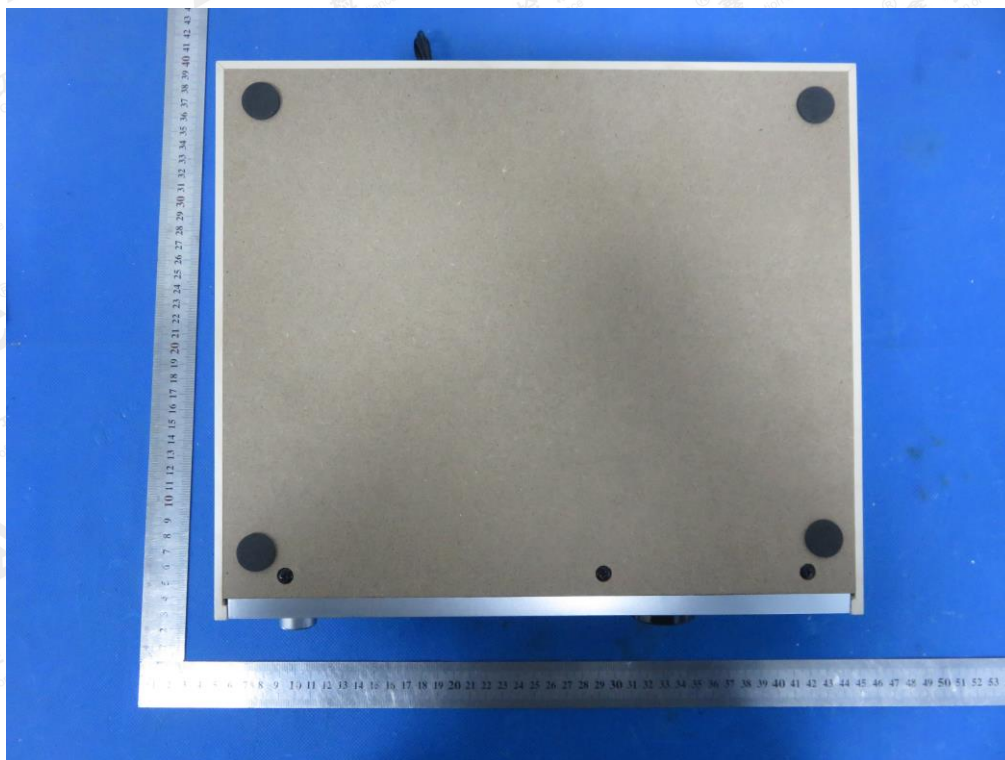


TOP VIEW OF EUT



The results shown in this test report refer only to the sample(s) tested unless otherwise stated and the sample(s) are retained for 30 days only. The document is issued by AGC, this document cannot be reproduced except in full with our prior written permission. The more details and the authenticity of the report will be confirmed at <http://www.agc-cert.com>.

BOTTOM VIEW OF EUT



FRONT VIEW OF EUT



The results shown in this test report refer only to the sample(s) tested unless otherwise stated and the sample(s) are retained for 30 days only. The document is issued by AGC, this document cannot be reproduced except in full with our prior written permission. The more details and the authenticity of the report will be confirmed at <http://www.agc-cert.com>.

BACK VIEW OF EUT



LEFT VIEW OF EUT



The results shown in this test report refer only to the sample(s) tested unless otherwise stated and the sample(s) are retained for 30 days only. The document is issued by AGC, this document cannot be reproduced except in full with our prior written permission. The more details and the authenticity of the report will be confirmed at <http://www.agc-cert.com>.

RIGHT VIEW OF EUT



VIEW OF EUT (PORT)-1



The results shown in this test report refer only to the sample(s) tested unless otherwise stated and the sample(s) are retained for 30 days only. The document is issued by AGC, this document cannot be reproduced except in full with our prior written permission. The more details and the authenticity of the report will be confirmed at <http://www.agc-cert.com>.

VIEW OF EUT (PORT)-2

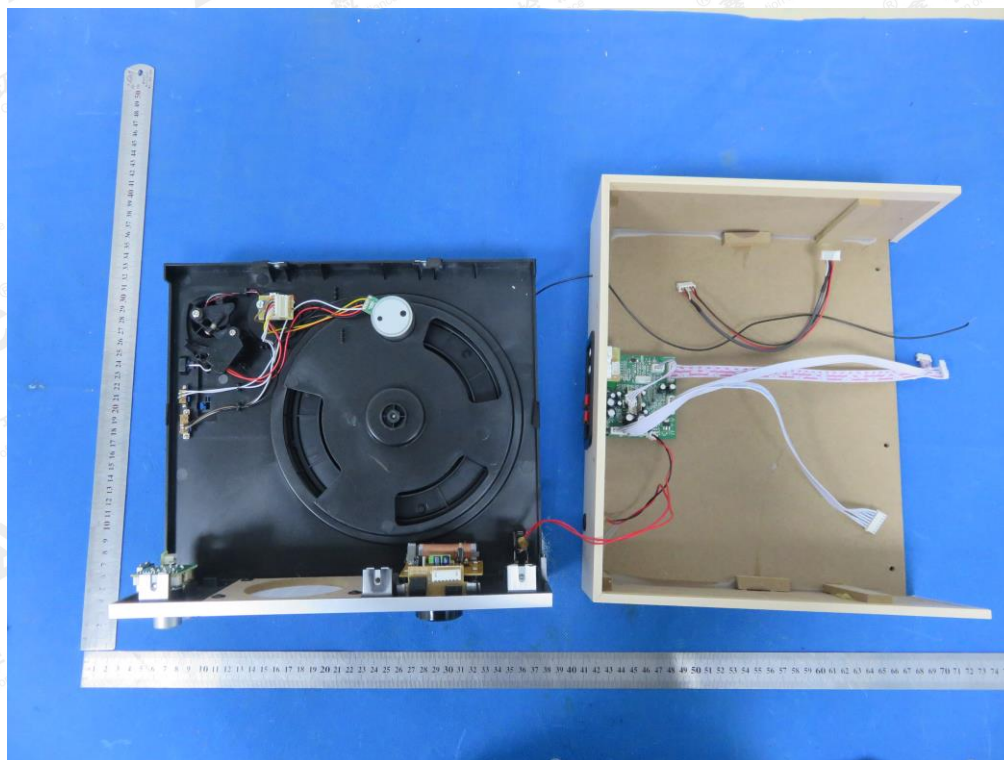


VIEW OF EUT (PORT)-3

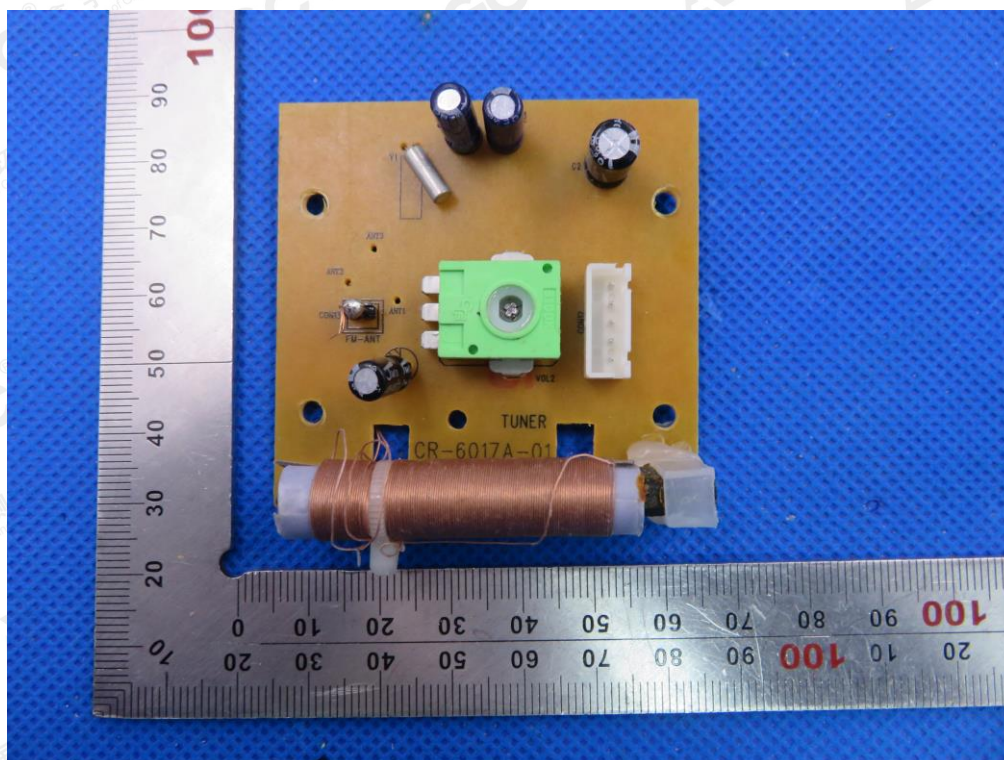


The results shown in this test report refer only to the sample(s) tested unless otherwise stated and the sample(s) are retained for 30 days only. The document is issued by AGC, this document cannot be reproduced except in full with our prior written permission. The more details and the authenticity of the report will be confirmed at <http://www.agc-cert.com>.

OPEN VIEW OF EUT

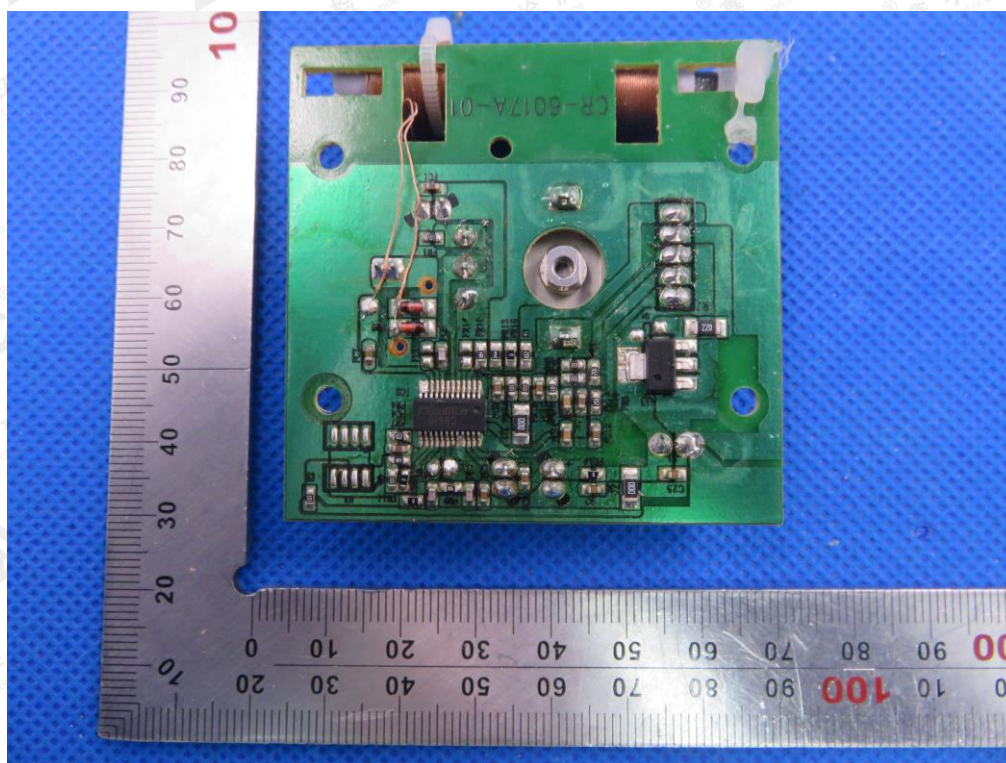


INTERNAL VIEW OF EUT-1

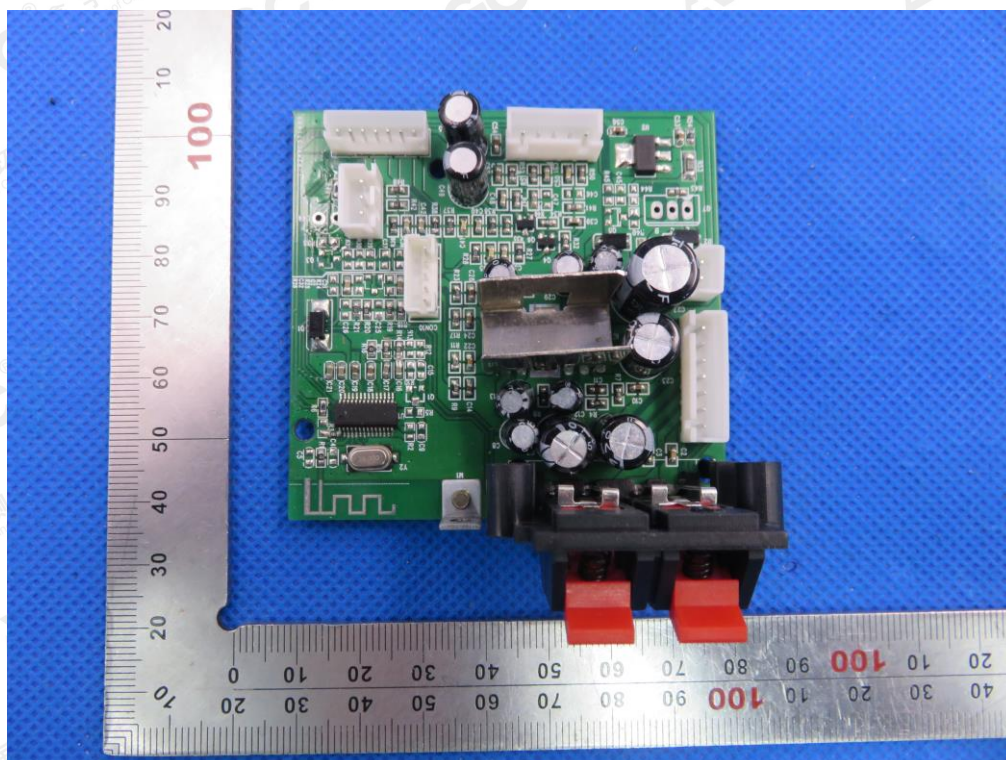


The results shown in this test report refer only to the sample(s) tested unless otherwise stated and the sample(s) are retained for 30 days only. The document is issued by AGC, this document cannot be reproduced except in full with our prior written permission. The more details and the authenticity of the report will be confirmed at <http://www.agc-cert.com>.

INTERNAL VIEW OF EUT-2

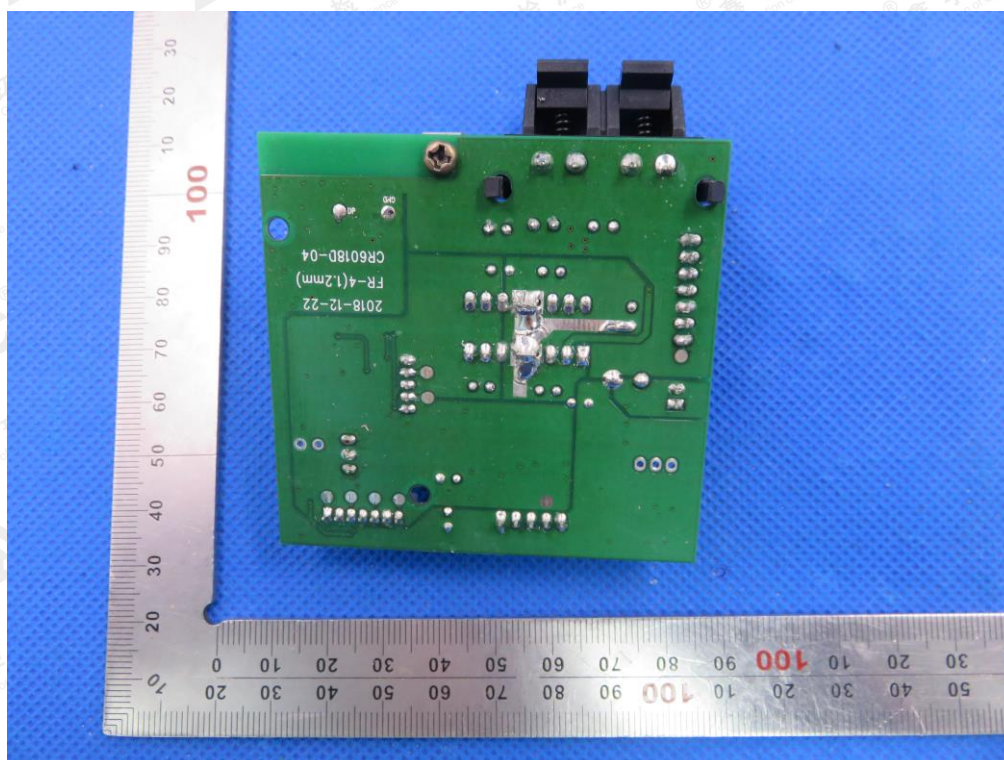


INTERNAL VIEW OF EUT-3

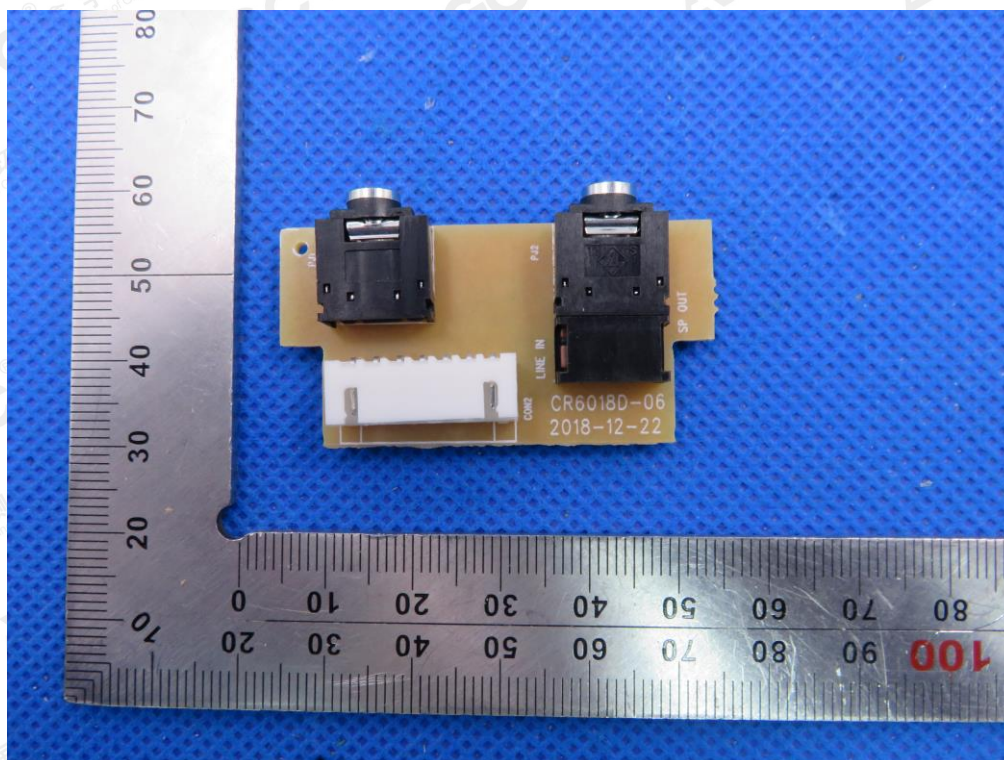


The results shown in this test report refer only to the sample(s) tested unless otherwise stated and the sample(s) are retained for 30 days only. The document is issued by AGC, this document cannot be reproduced except in full with our prior written permission. The more details and the authenticity of the report will be confirmed at <http://www.agc-cert.com>.

INTERNAL VIEW OF EUT-4

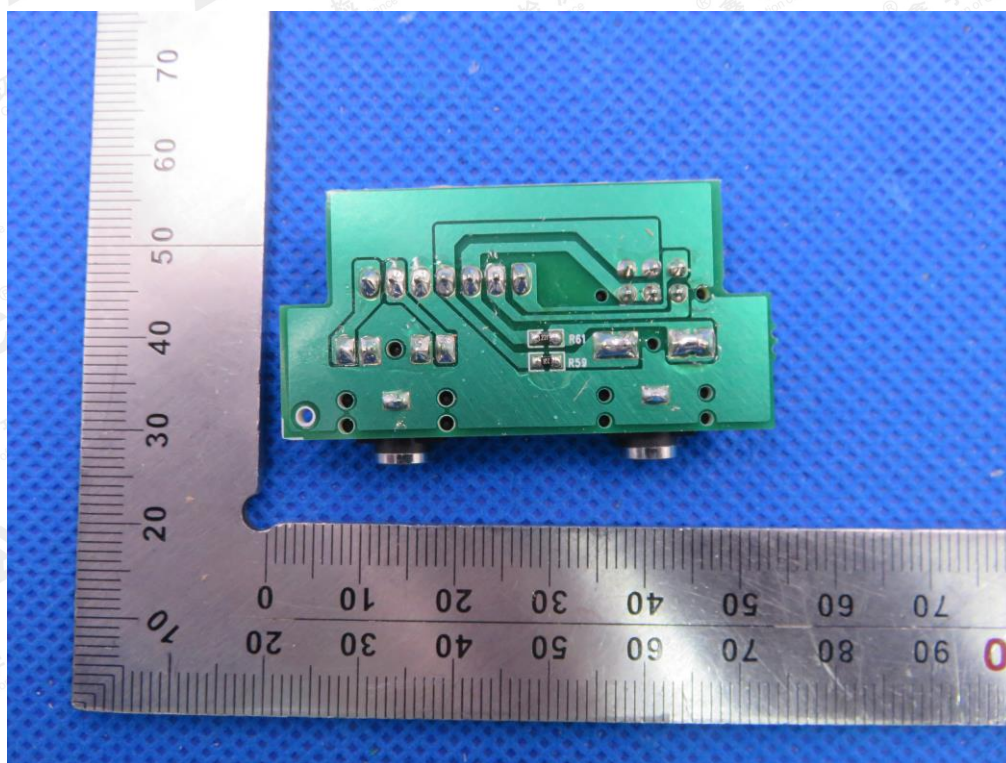


INTERNAL VIEW OF EUT-5

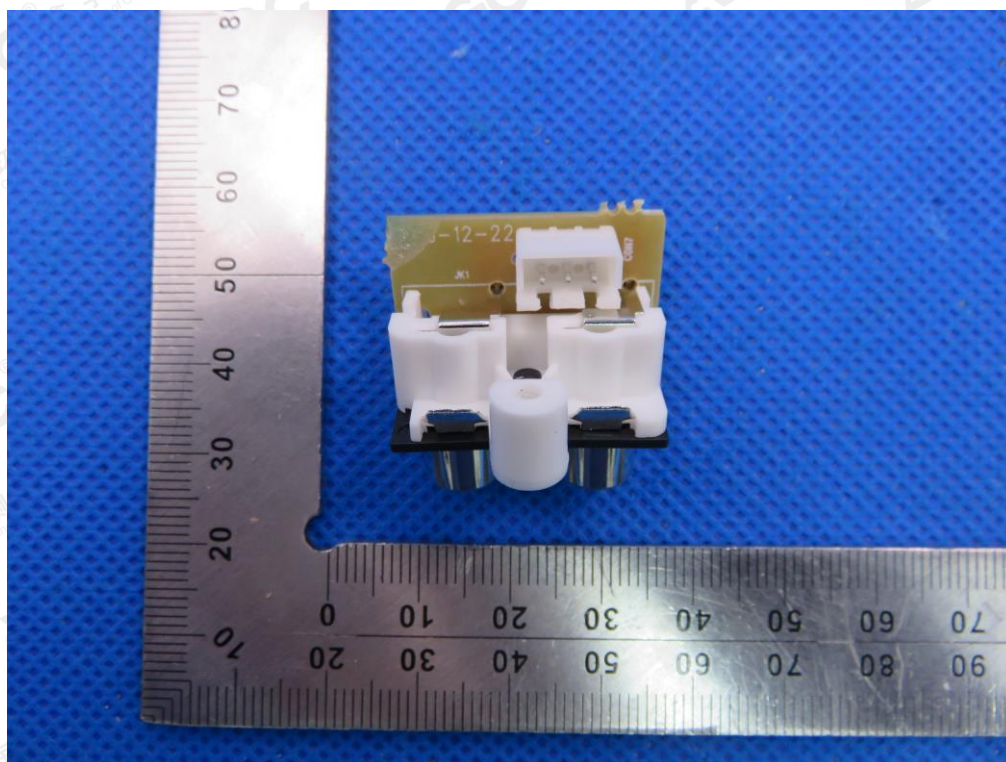


The results shown in this test report refer only to the sample(s) tested unless otherwise stated and the sample(s) are retained for 30 days only. The document is issued by AGC, this document cannot be reproduced except in full with our prior written permission. The more details and the authenticity of the report will be confirmed at <http://www.agc-cert.com>.

INTERNAL VIEW OF EUT-6

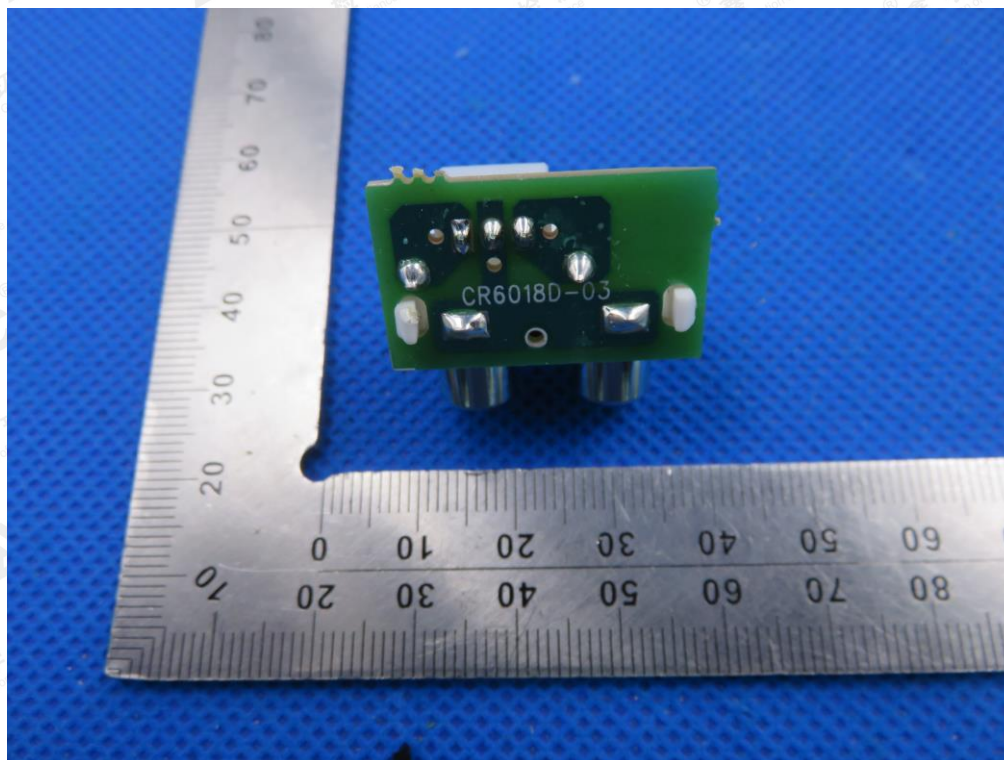


INTERNAL VIEW OF EUT-7

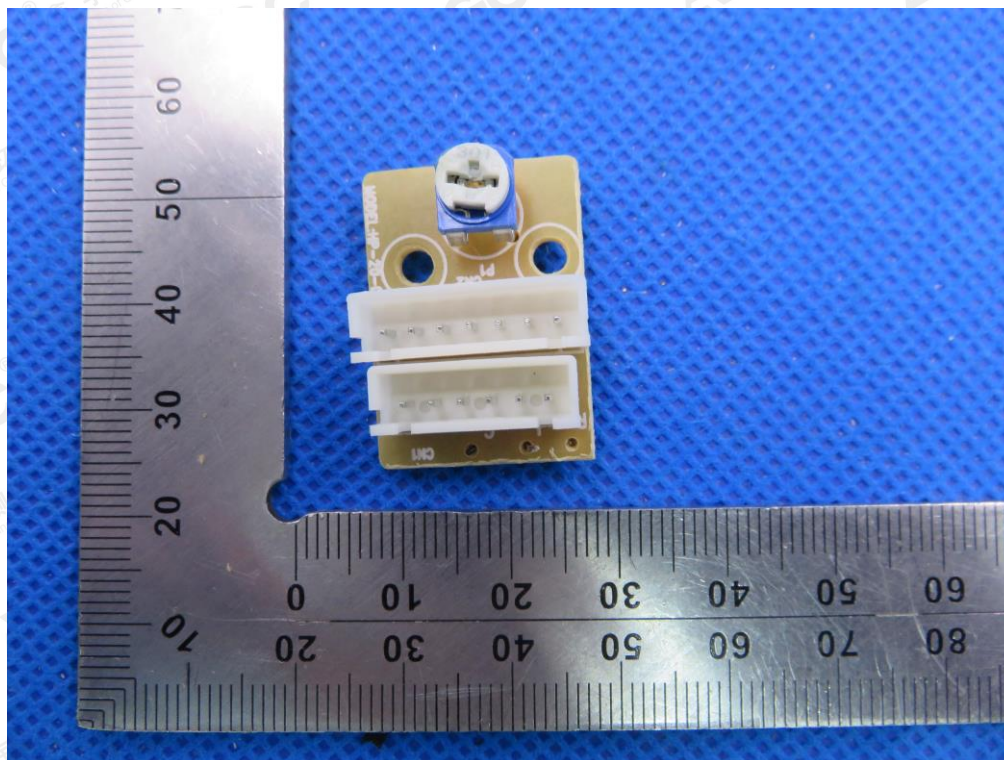


The results shown in this test report refer only to the sample(s) tested unless otherwise stated and the sample(s) are retained for 30 days only. The document is issued by AGC, this document cannot be reproduced except in full with our prior written permission. The more details and the authenticity of the report will be confirmed at <http://www.agc-cert.com>.

INTERNAL VIEW OF EUT-8

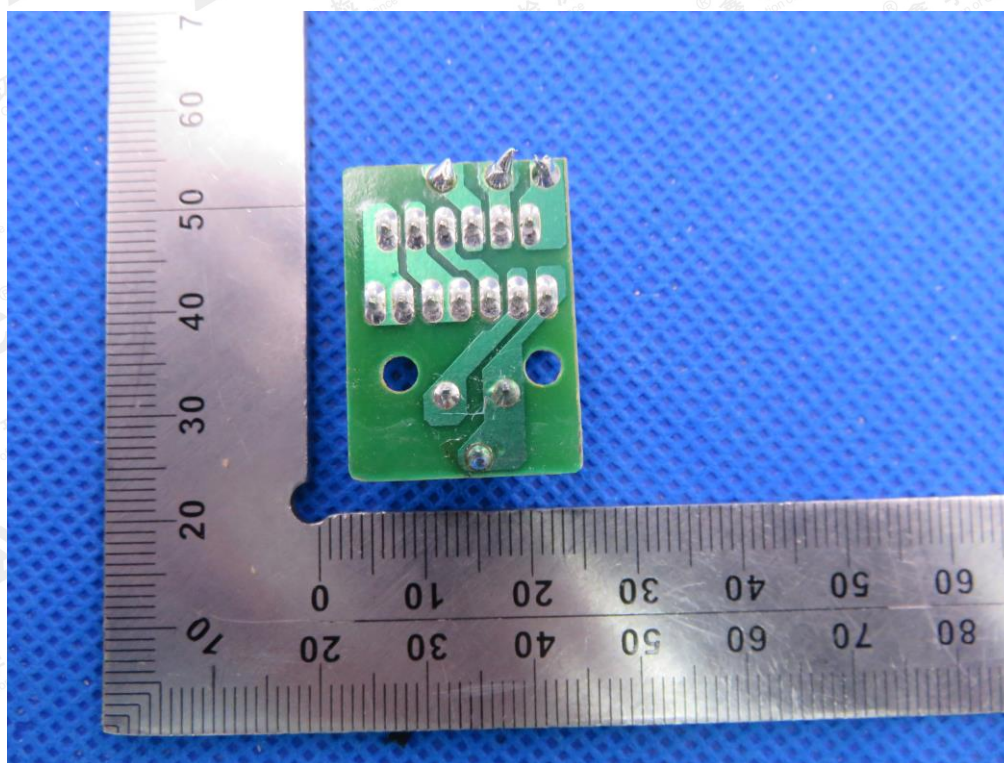


INTERNAL VIEW OF EUT-9

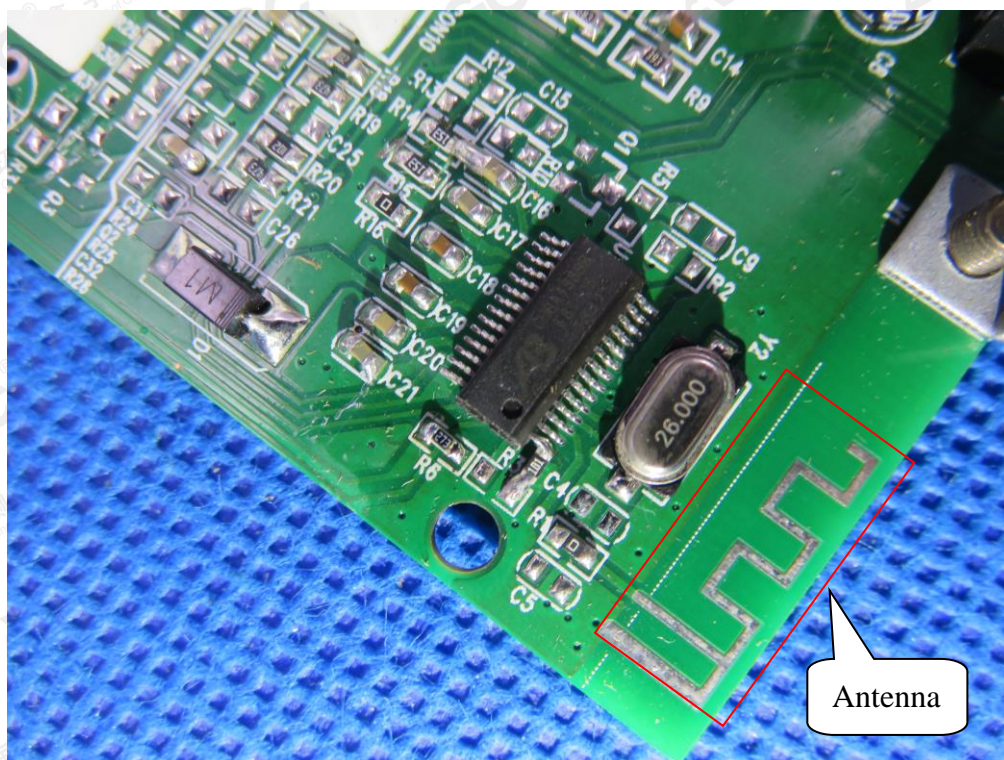


The results shown in this test report refer only to the sample(s) tested unless otherwise stated and the sample(s) are retained for 30 days only. The document is issued by AGC, this document cannot be reproduced except in full with our prior written permission. The more details and the authenticity of the report will be confirmed at <http://www.agc-cert.com>.

INTERNAL VIEW OF EUT-10

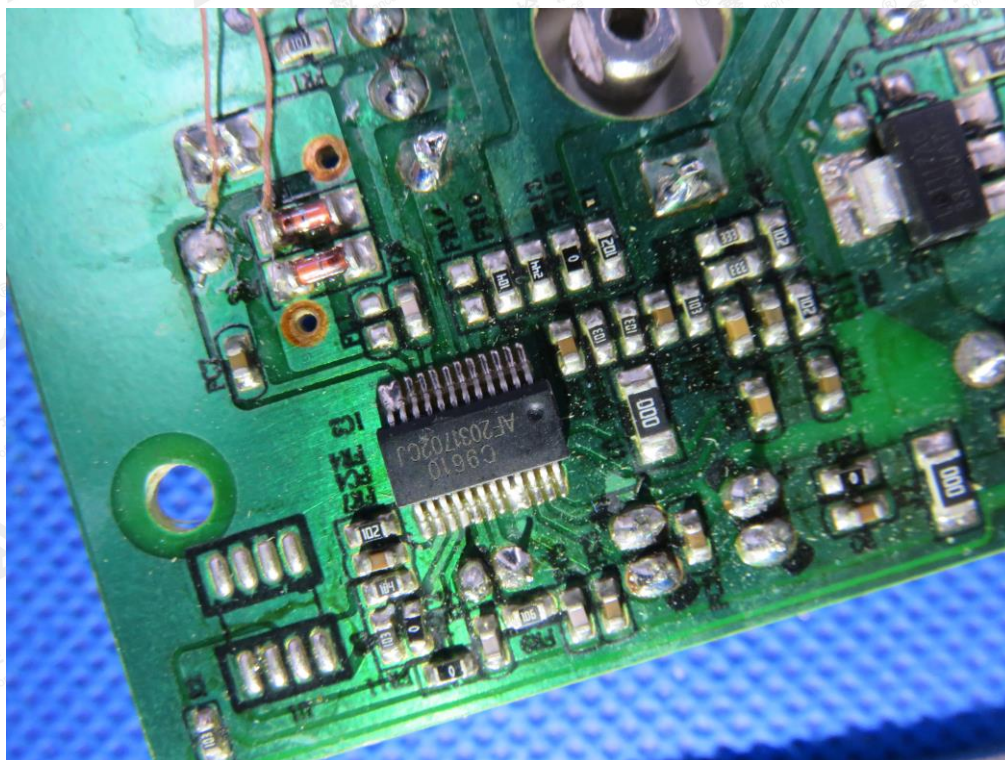


INTERNAL VIEW OF EUT-11



The results shown in this test report refer only to the sample(s) tested unless otherwise stated and the sample(s) are retained for 30 days only. The document is issued by AGC, this document cannot be reproduced except in full with our prior written permission. The more details and the authenticity of the report will be confirmed at <http://www.agc-cert.com>.

INTERNAL VIEW OF EUT-12



The results shown in this test report refer only to the sample(s) tested unless otherwise stated and the sample(s) are retained for 30 days only. The document is issued by AGC, this document cannot be reproduced except in full with our prior written permission. The more details and the authenticity of the report will be confirmed at <http://www.agc-cert.com>.

Adapter 1



Adapter 2



----END OF REPORT----

The results shown in this test report refer only to the sample(s) tested unless otherwise stated and the sample(s) are retained for 30 days only. The document is issued by AGC, this document cannot be reproduced except in full with our prior written permission. The more details and the authenticity of the report will be confirmed at <http://www.agc-cert.com>.