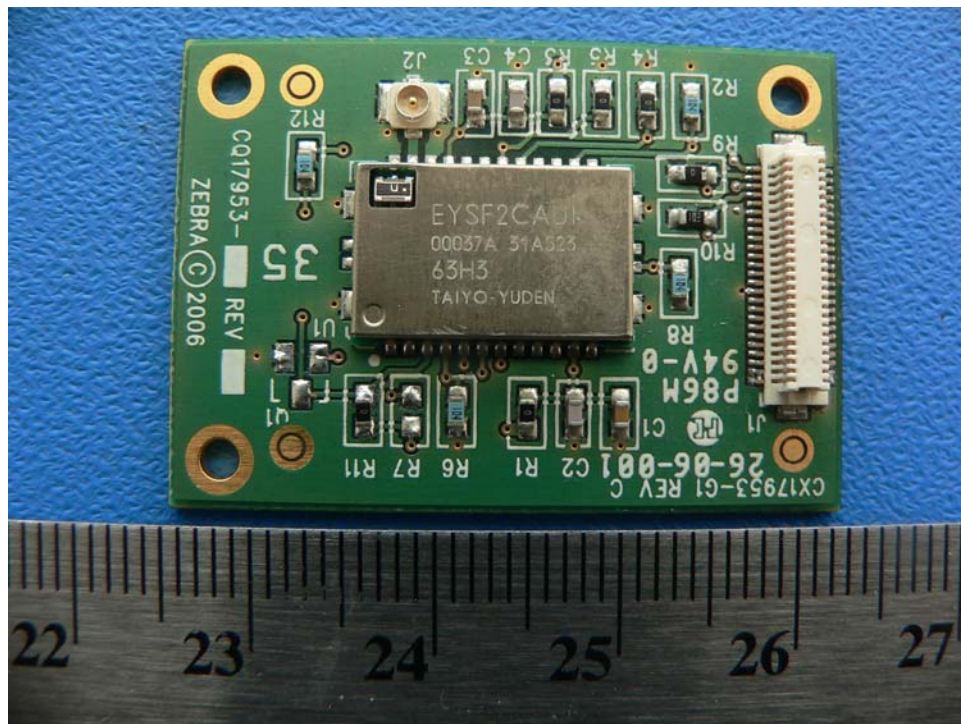


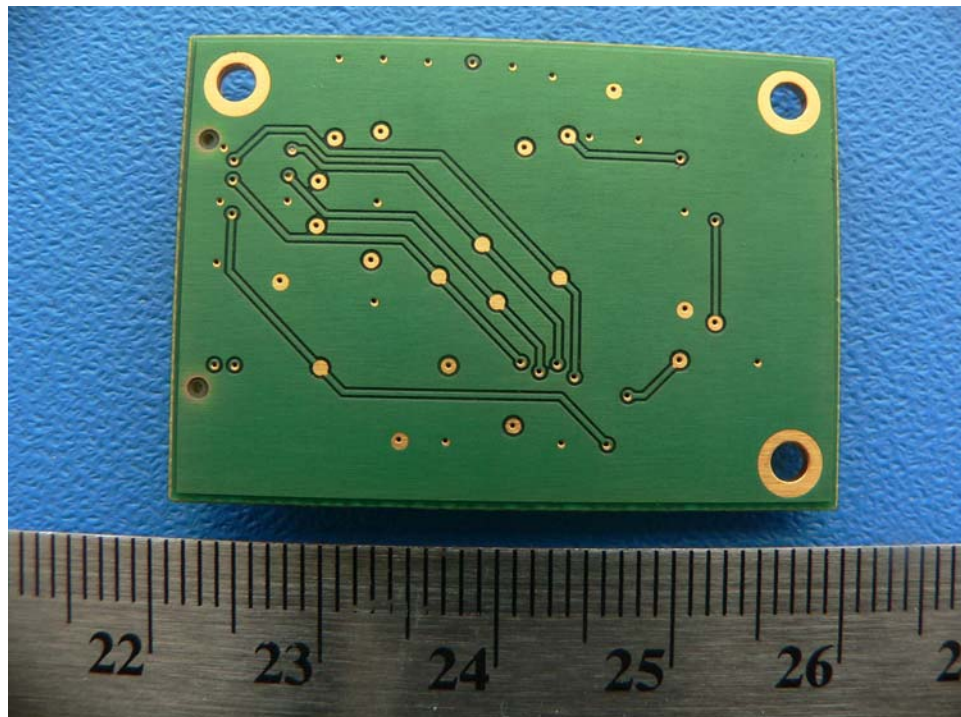
## EXHIBIT C - EUT PHOTOGRAPHS

---

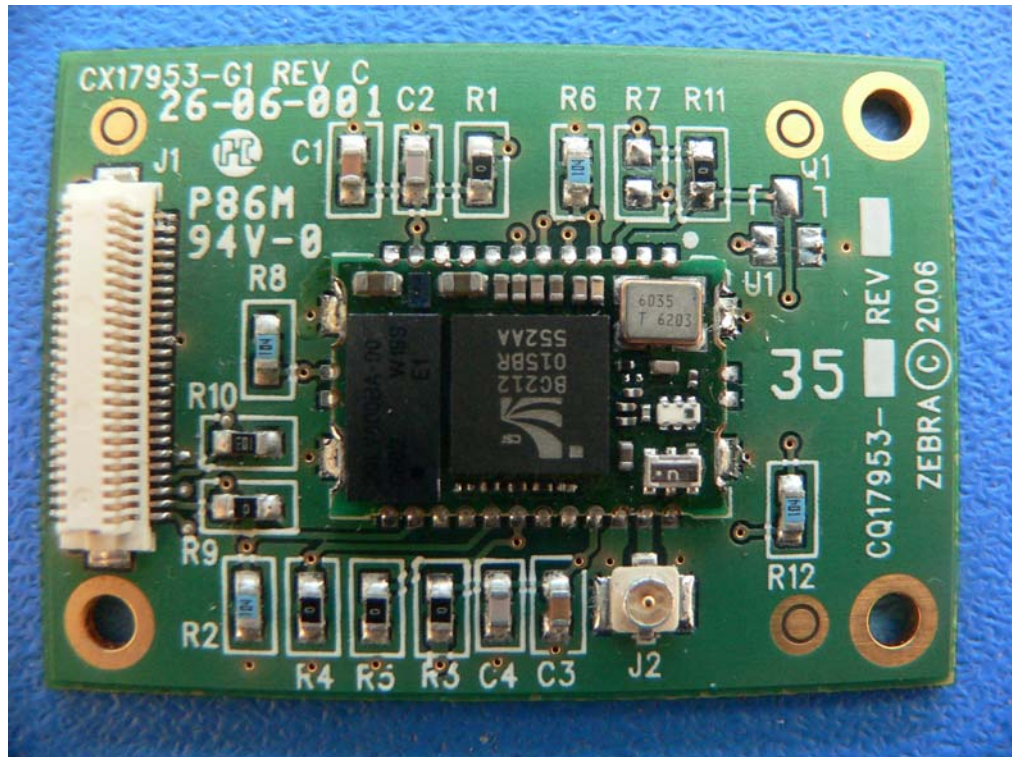
EUT –Transceiver component side view



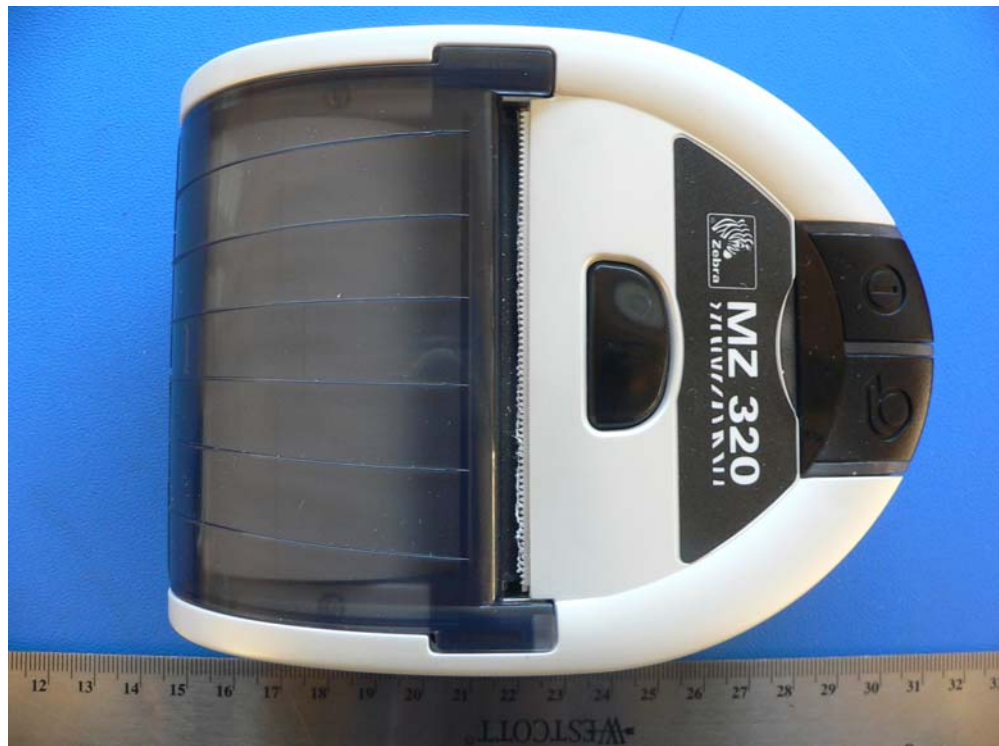
EUT –Transceiver solder side view



EUT –Transceiver RF shield off view



Host – Top View





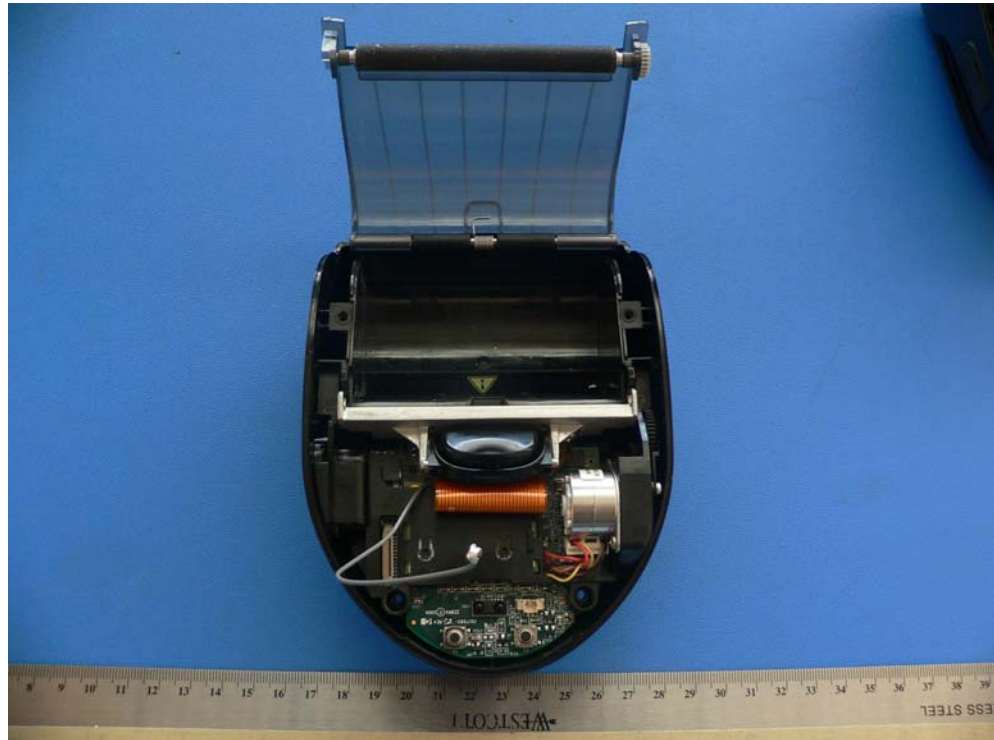
### Host – Bottom View



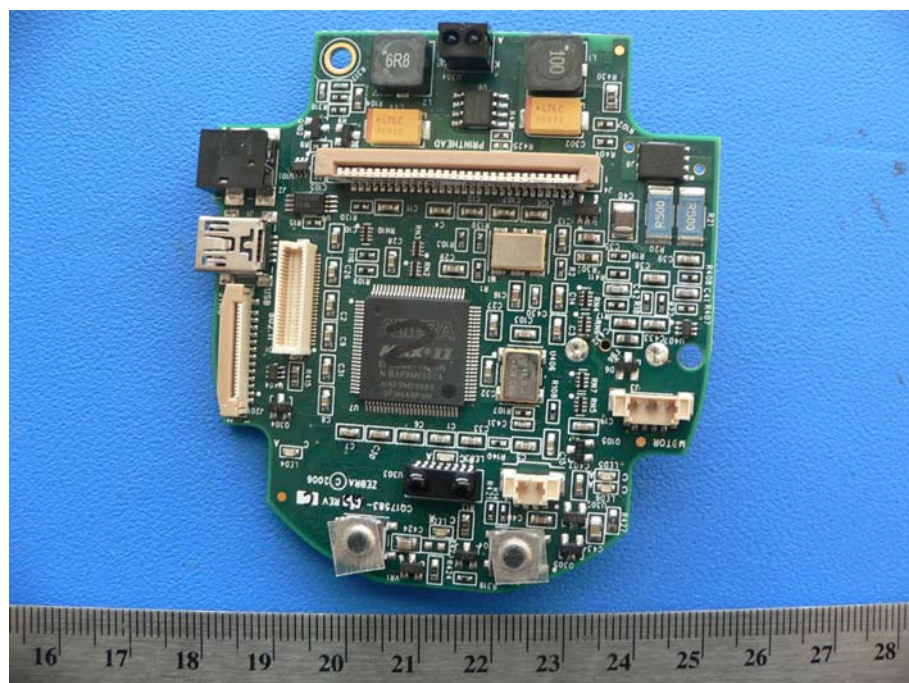
### Host –side view



**Host – chassis off view**

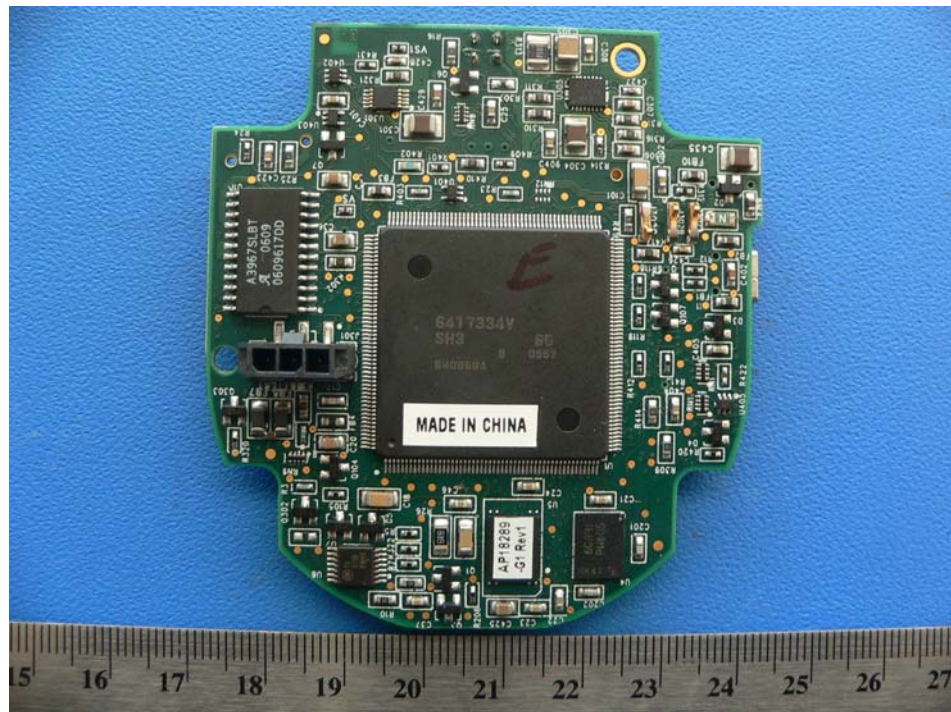


**Host – Mainboard View 1**

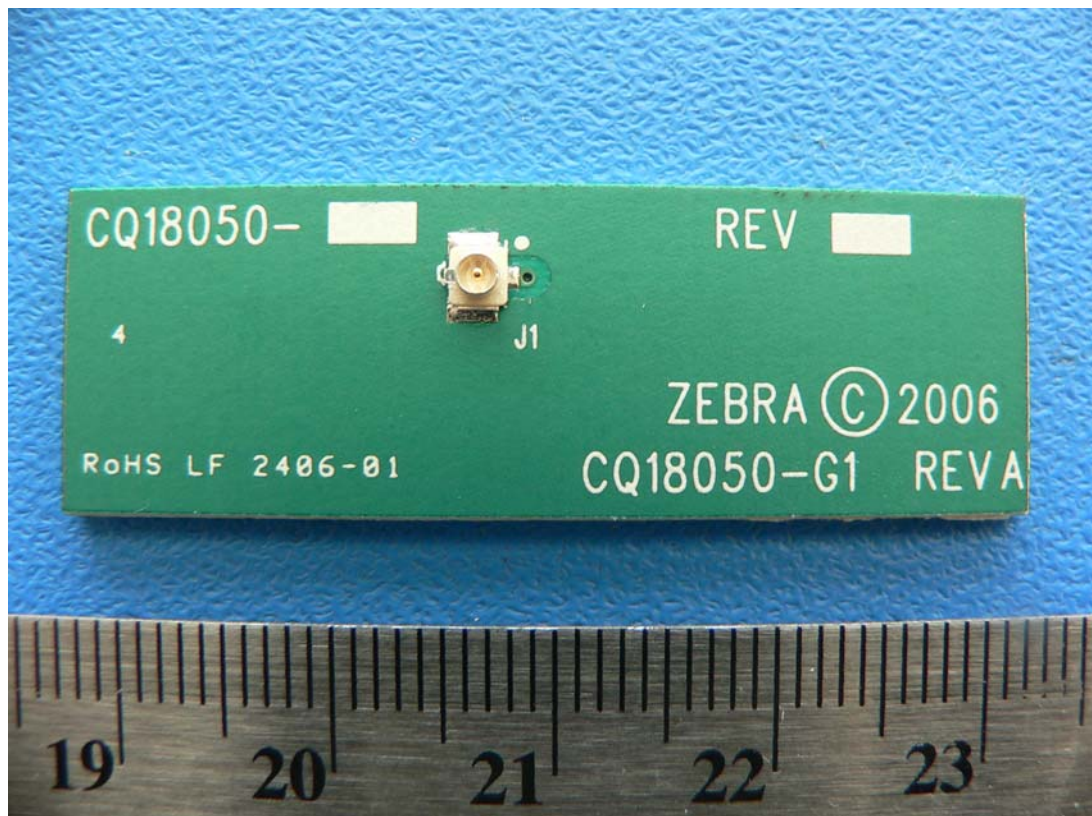




Host – Mainboard View 2



Antenna port view





**Antenna back side view**



**Power supply view**





**Battery view**

