

CCU Antenna Info:

7.1.3 RF Trace and Antenna Layout Recommendations

Figure 7-2 shows the location of the antenna on the WL1835MODCOM8B board as well as the RF trace routing from the WL1835 module (TI reference design). The Pulse multilayer antennas are mounted on the board with a specific layout and matching circuit for the radiation test conducted in FCC, CE, and IC certifications.

NOTE

For reuse of the regulatory certification, a trace of 1-dB attenuation is required on the final application board.

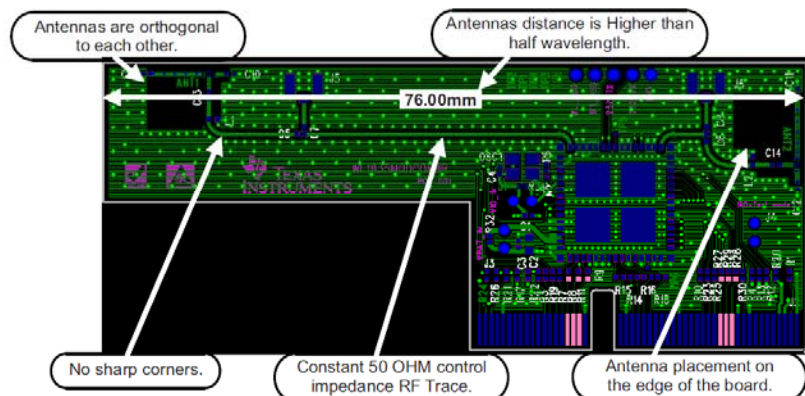


Figure 7-2. Location of Antenna and RF Trace Routing on the WL1835MODCOM8B Board

Follow these RF trace routing recommendations:

- RF traces must have 50- Ω impedance.
- RF traces must not have sharp corners.
- RF traces must have via stitching on the ground plane beside the RF trace on both sides.
- RF traces must be as short as possible. The antenna, RF traces, and module must be on the edge of the PCB product in consideration of the product enclosure material and proximity.

Figure 1: RF Trace and Antenna Layout Recommendations

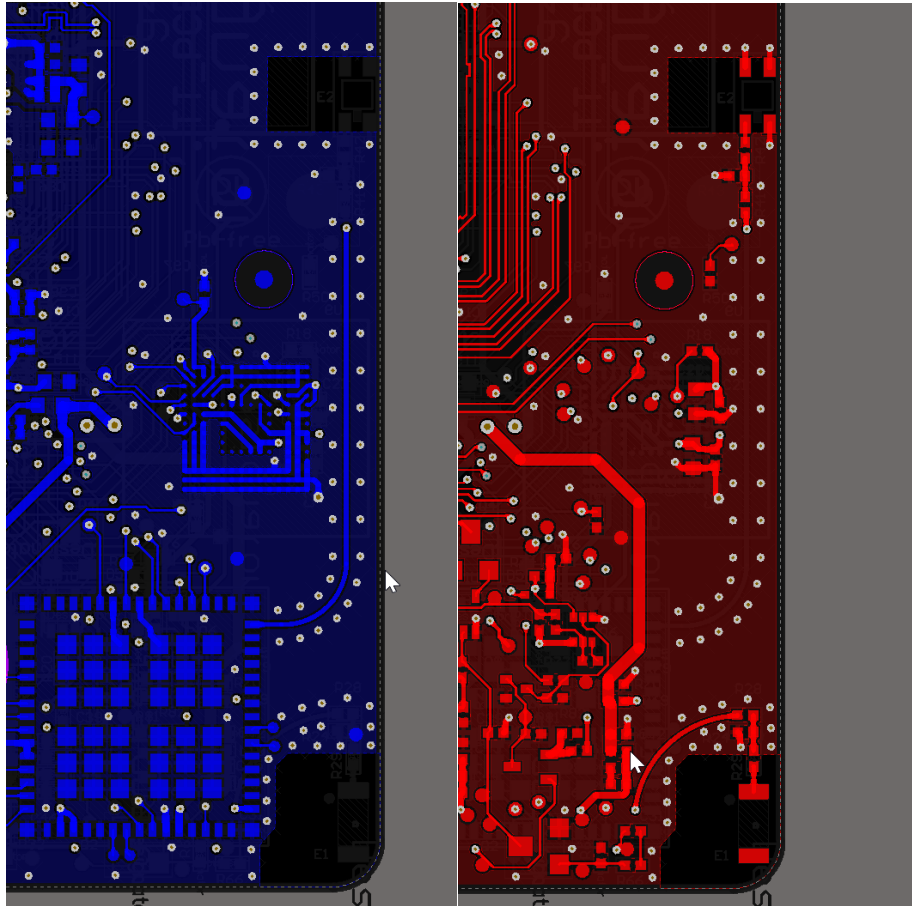


Figure 2: Bottom (Left) and Top (Right) Layers demonstrating the RF traces

Antenna Datasheet PDF:



BT_WiFi_Antenna_Da
tasheet.pdf