

## **Exhibit D: FCC ID Label & Location on Radio**

**FCC ID: HN2ABTM3-3**



**All Three Radios Configuration**



FCC ID: HN2SB555-2

FCC ID: HN22011B-2

CONTAINS TX

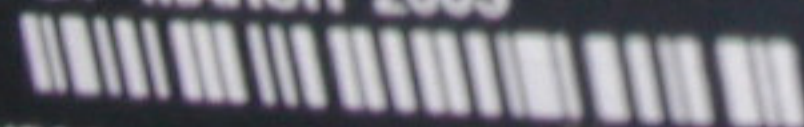
FCC ID: HN2ABTM3-3 == 12V 1.5A

**FCC** Tested To Comply With FCC Standards  
FOR HOME OR OFFICE USE

MODEL: 700C MFD: MARCH 2003

SN: 063003000095

CN: 760432C25623N704



**NOM** 



I.T.E. 729T



Made in Singapore

**CE**  N309





802.11(b) with Bluetooth



FCC ID: HN22011B-2

IC: 1223A-2011B

CONTAINS Tx

FCC ID: HN2ABTM3-3

CAN: 1223104675A IC: ICES-003 Class

**FCC** Tested To Comply With FCC Standards  
FOR HOME OR OFFICE USE

MODEL: 700C MFD: MARCH 2003

SN: 063003000095 

CN: 75000000000004704

**NOM**



.T.E. 729T



**CE**



NCSE

Made in Singapore

802.11b & Bluetooth Radio Configuration





CONTAINS TX  
FCC ID: HN2A8TM3-3  
CANADA: 1223104675A  
SCYTRCPALBL02-223  
IC: ICES-003 Class B 12V 1.5A  
Tested To Comply With FCC Standards  
FOR HOME OR OFFICE USE  
MODEL: 700C MFD: MARCH 2003  
SN: 063003000095  
CN: 7409876543214123  
Made in Singapore

NOM  
L.T.E. 729T  
UL  
CE 0168

**Bluetooth Radio Configuration**



CONTAINS TX

FCC ID: HNEABTM3-3

CANADA: 1223104675A

SCYTRCPALBL02-223

IC: ICES-003 Class B == 12V 1.5A



Tested To Comply With FCC Standards  
FOR HOME OR OFFICE USE

MODEL: 700C MFD: MARCH 2003

SN: 063003000095

CN: 7409876543214123



Made in Singapore

NOM-  NYCE



I.T.E. 729T



CE 0168 