



# TD191 Adapter Box Quick Start Guide

Please read this Quick Start Guide and save it for future reference before using the TD191 Adapter Box

## **LEGAL INFORMATION**

Copyright © 2018 JACS SOLUTIONS, Inc.

All rights reserved.

JACS Solutions Inc. is practicing the concept of sustainable development, therefore, JACS Solutions Inc. reserves the right to make modifications on print errors or update specifications in this manual without prior notice.

No part of this publication may be excerpted, reproduced, translated or utilized in any form or by any means, electronic or mechanical, including photocopying and microfilm, without the prior written permission of JACS Solutions Inc.

This product may contain certain goods and technology that are controlled by the Export Laws and Regulations of China and other countries and regions, any illegal transfer is prohibited.

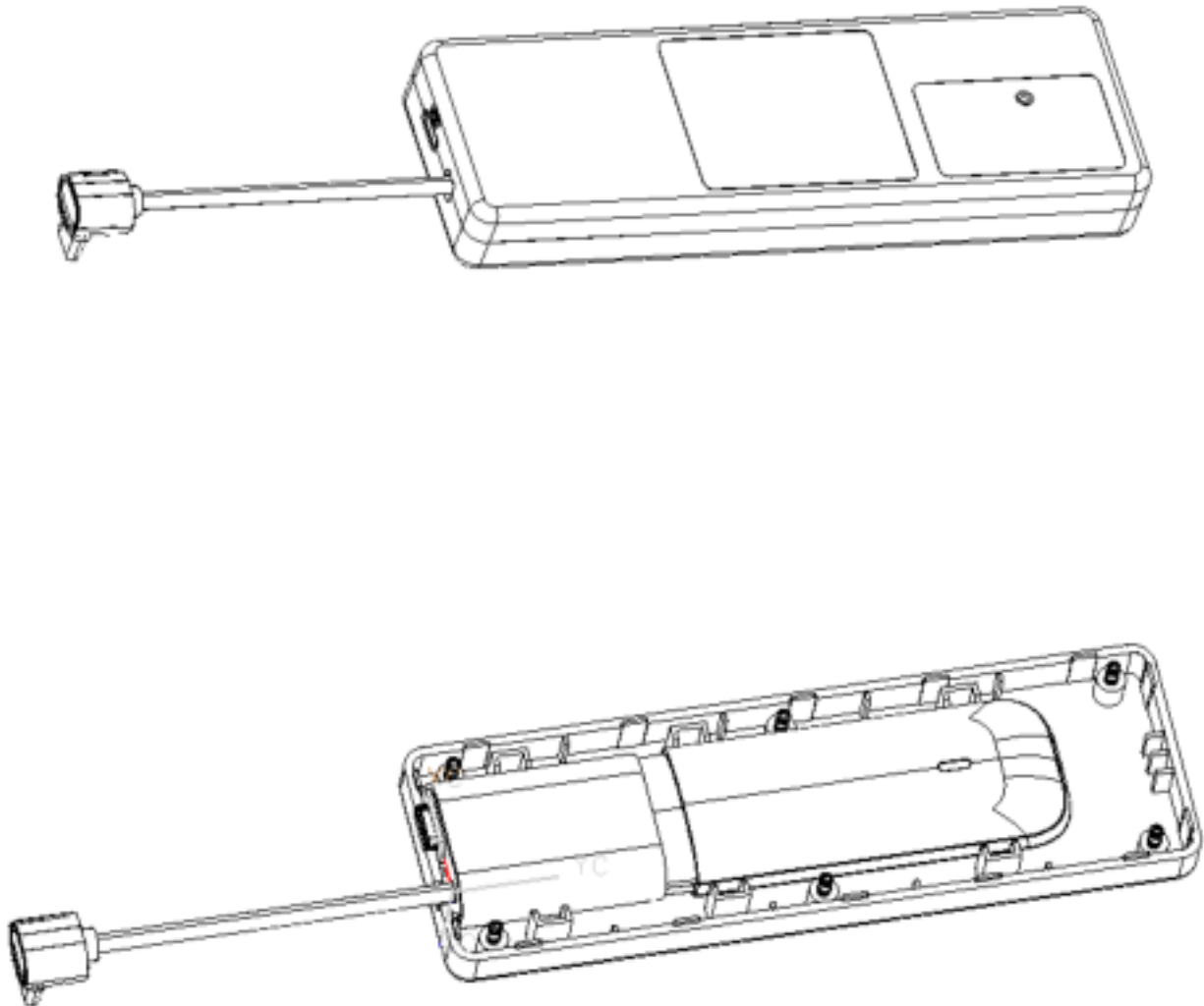
This manual is for reference purpose only and does not represent as promises for anything in any format. The actual product (including but not limited to color, size etc.) may be different.

The manual is drafted based on the condition of the product when it was manufactured. Unless otherwise required by law, there are no clear guarantee and/or acquiescence are made for the accuracy, reliability and content of this manual.

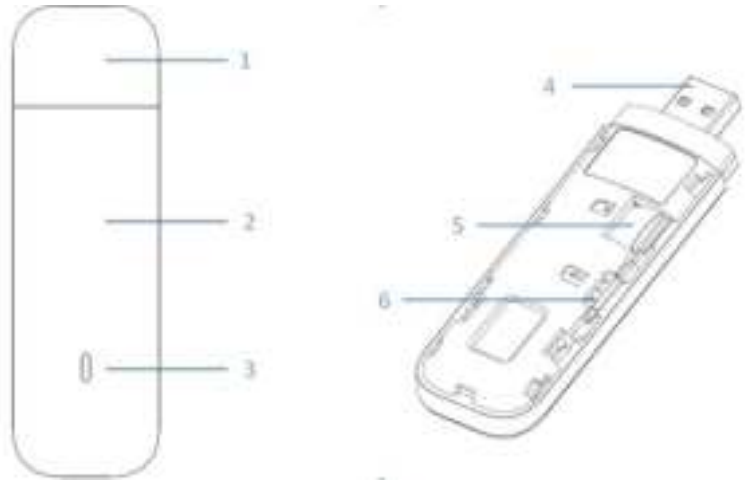
To the maximum extent permitted by applicable law, JACS Solutions Inc. shall not have any liability for any special, incidental, indirect, consequential or punitive damages whatsoever, including but limited to any damages for lost profits, loss of data or information, or any other pecuniary loss, no matter how the loss is caused.

## ***Product Appearance***

Thank you for purchasing the JACS product. The following figure is only for your reference. The actual product may be different.



- 1.Dongle Cap
- 2.Front Cover
- 3.Indicator Light
- 4.USB Connector
- 5.T-Flash Card Slot
- 6.Nano-SIM Card Slot



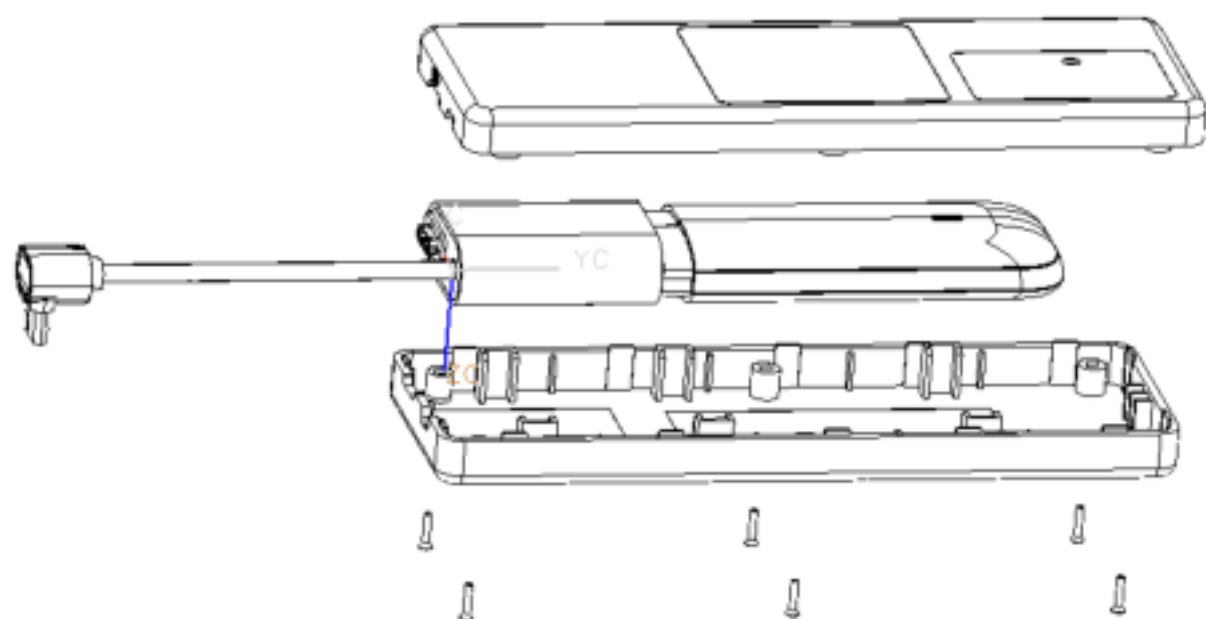
### ***Hardware Installation***

- Please use standard nano-SIM card. Inserting non-standard nano-SIM card or standard-SIM card or micro-SIM card could cause the SIM card to be unrecognized or the damage of the card slot.



- If the SIM card you're using is not compatible with the device, please contact your carrier.
- Please follow the steps below to insert the SIM card: Step1.

explosiveview





Step2. Install a nano-SIM card to the nano-SIM card slot and a T-flash card to the T-flash card slot.

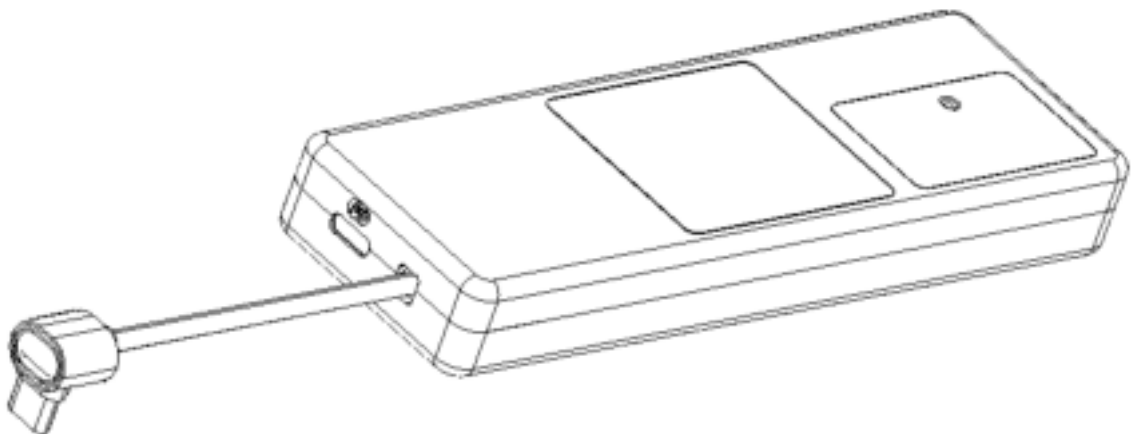


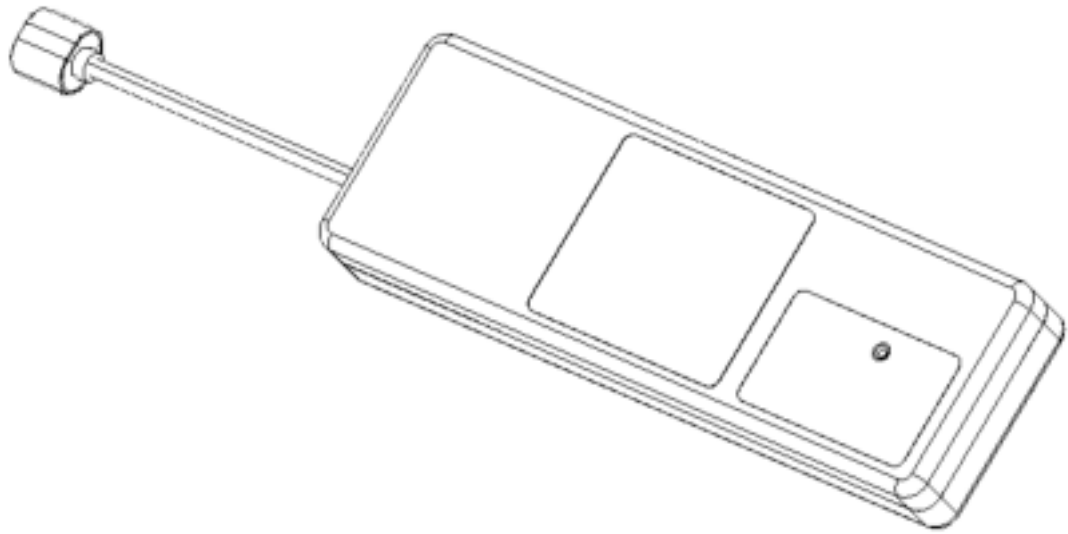
Step3. Slide the front cover gently back into place.



### ***Using Your Dongle***

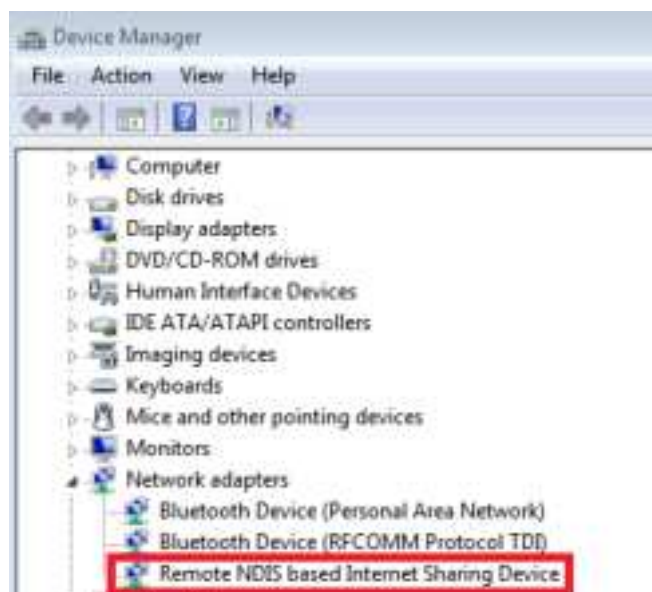
- Insert the dongle into your device's USB port securely. The operating system will automatically detect, identify your dongle and start the driver installation wizard.





The device will then be recognized as a “Remote NDIS based Internet Sharing Device” in Device Manager on Windows operating systems.





- After the dongle is correctly powered, the indicator light will be on. Different colors indicate the different working status of the dongle, as shown in the following table.

Status	Description
No Light	Airplane/Standby mode
Solid Red Light	Booting up / Searching for a network / Malfunction
Solid Green Light	Registered on 3G network
Blinking Green Light	Transmitting data on 3G network
Solid Blue Light	Registered on 4G network
Blinking Blue Light	Transmitting data on a 4G network

### ***Health and Safety Information***

Please pay attention to the rules and policies below carefully. Incorrect usage of the product may lead to danger or illegality.

- Keep the dongle and all its parts out of the reach of children and pets. The dongle and its parts

are choking hazards and may lead to lethal danger and/or critical injury;

- If improperly shielded, some electronic devices may be affected by the electromagnetic interference from the dongle, such as the electronic system of vehicles. Consult the manufacturers of such devices before using the dongle if necessary;
- Operating the dongle may interfere with medical instruments such as pacemakers, cochlear implants, and hearing aids. Consult the manufacturers of the medical instruments that you are using before using the dongle;
- Please always keep the dongle more than 20 centimeters (8 inches) away from those implanted medical instruments (including but not limited to pacemakers, cochlear implant etc.) when your dongle is turned on;
- Please do not use the dongle at places such as gas station, oil warehouses and/or chemical factories, where there are explosive gases or explosive products being processed. Turn off the dongle if necessary.
- Please be compliant with all the rules and regulations, do not use the dongle in aircrafts.
- Please be compliant with all rules and regulations, do not use the dongle in the areas that are undergoing blasting operation.
- Do not open and modify the internal antenna area without proper guidance. Otherwise the performance of the modem may be negatively influenced.
- The dongle is not waterproof. Keep the dongle in dry operating environment.
- Please only use the device when the operating temperature is between -10°C (14°F) and +55°C (131°F), and the humidity is between 5% and 95%. If the temperature is too high or too low, the dongle might be damaged.
- If the device overheats, please stop using it and wait until it cools down. Physical contact the overheated device with human body for long time may lead to low-temperature burns.
- Please use original accessories or accessories that are authorized. Using any unauthorized accessories may affect the performance of the dongle, cause safety hazard, violate the related

national regulations, or void the warranty.

- Only qualified personnel can disassemble and repair the dongle.

### ***Warranty***

This warranty only applies if the product has been used in accordance with the manufacturer's instructions under normal use and with reasonable care. This warranty does not cover any artificial damages and all the other damages listed below; and if that's the case, the user will not be able to return the device and/or request a refund neither:

- Normal wear and tear (including but not limited to the cover, antennas, accessories, etc.).
- Defects or damages from misusing of this product abnormal conditions and not following the user instructions, and other types of man-made damages;
- Defects or damages from allowing any personnel other than a qualified service center or individual authorized by JACS Solutions Inc. to open, modify, or repair the product, or if it is repaired using unauthorized spare parts;
- Defects or damages from acts of God (including but not limited to floods, fires, earthquakes and lightning strikes);
- All defects or damages caused by other parties instead of JACS Solutions Inc.;
- Any other cause beyond the range of normal usage intended for the product.

### ***Getting More Help***

If you encounter any problems while using our product, please contact us via the methods listed below to get help:

- Send an email to [helpdesk@jacs-solutions.com](mailto:helpdesk@jacs-solutions.com)
- Visit us by [www.jacs-solutions.com](http://www.jacs-solutions.com)

### **EU Regulatory Conformance**

Hereby, JACS SOLUTIONS INC declares that this radio equipment is in compliance with the essential requirements and other relevant provisions of Directive 2014/53/EU.

For full text declaration of conformity, visit the Web site  
[www.jacs-solutions.com/certification](http://www.jacs-solutions.com/certification).

Notice: Observe the national local regulations in the location where the device is to be used. This device may be restricted used by located carriers.

### **Frequency Bands and Power:**

The EU frequency bands and transmitting power as follows:

GSM 900: 35 dBm; GSM 1800: 32 dBm;

WCDMA B1/B8: 25.0 dBm; LTE B1/B3/B7/B8/B20: 24.0 dBm;

### **RF exposure information**

The SAR limit of Europe is 2.0 W/kg. This devices has also been tested against this SAR limit. This device was tested for typical body-worn operations with the devices kept 0.5cm from the body. To maintain compliance with RF exposure requirements, use accessories that maintain a 0.5cm separation distance between the user's body and the devices. The use of accessories that do not satisfy these requirements may not comply with RF exposure requirements, and should be avoided.

The SAR limit of FCC and ISED is 1.6 W/kg averaged over one gram of tissue. This devices has also been tested against this SAR limit. This device was tested for typical body-worn operations with the devices kept 0.5cm from the body. To maintain compliance with RF exposure requirements, use accessories that maintain a 0.5cm separation distance between the user's body and the devices. The use of accessories that do not satisfy these requirements may not comply with FCC and ISED RF exposure requirements, and should be avoided.

## Statement

This device complies with part 22/24/27/90 of the FCC rules and Innovation, Science and Economic Development Canada's licence-exempt RSS(s), operation is subject to the following two conditions: (1) this device may not cause harmful interference, and (2) this device must accept any interference received, including interference that may cause undesired operation.

Le présent appareil est conforme aux CNR d'Industrie Canada applicables aux appareils radio exempts de licence. L'exploitation est autorisée aux deux conditions suivantes : (1) l'appareil ne doit pas produire de brouillage, et (2) l'utilisateur de l'appareil doit accepter tout brouillage radioélectrique subi, même si le brouillage est susceptible d'en compromettre le fonctionnement.

This Class B digital apparatus complies with Canadian ICES-003.

Cet appareil numérique de la classe B est conforme à la norme NMB-003 du Canada.

NOTE: The manufacturer is not responsible for any radio or TV interference caused by unauthorized modifications to this equipment. Such modifications could void the user's authority to operate the equipment.

NOTE: This equipment has been tested and found to comply with the limits for a Class B digital device, pursuant to part 22/24/27/90 of the FCC Rules. These limits are designed to provide reasonable protection against harmful interference in a residential installation. This equipment generates uses and can radiate radio frequency energy and, if not installed and used in accordance with the instructions, may cause harmful interference to radio communications. However, there is no guarantee that interference will not occur in a particular installation. If this equipment does cause harmful interference to radio or television reception, which can be determined by turning the equipment off and on, the user is encouraged to try to correct the interference by one or more of the following measures:

- Reorient or relocate the receiving antenna.

- Increase the separation between the equipment and receiver.
- Connect the equipment into an outlet on a circuit different from that to which the receiver is connected.
- Consult the dealer or an experienced radio/TV technician for help
- This device and its antenna(s) must not be co-located or operating in conjunction with any other antenna or transmitter.

Warning: Changes or modifications to this unit not expressly approved by the part responsible for compliance could void the user's authority to operate the equipment.