

INTERNAL PHOTOS

WHEN YOU NEED TO BE SURE





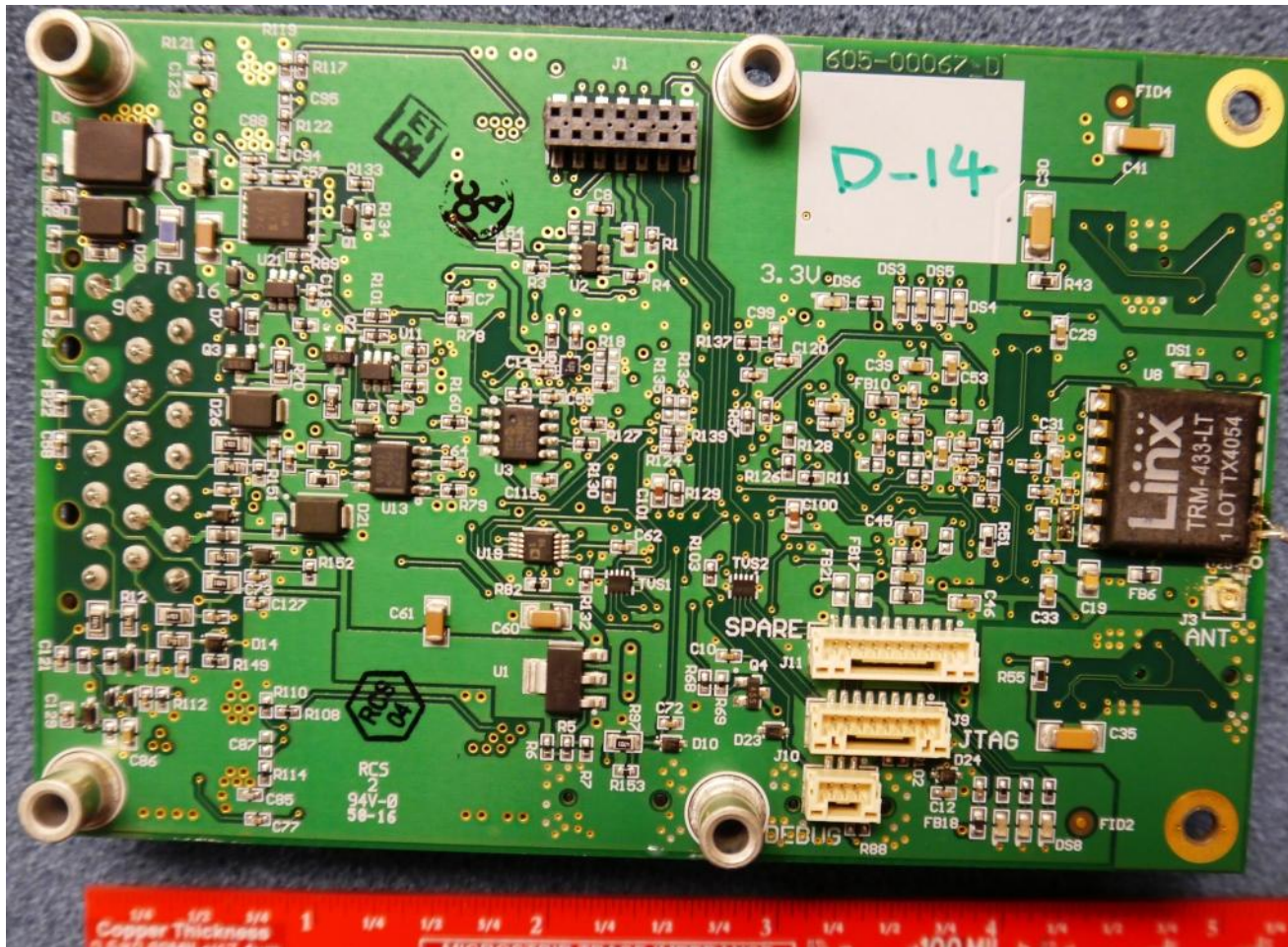






J3

Note: Productions samples will have the external coaxial connector connected directly to U.fl connector J3. The tested sample had a faulty connector that had to be bypassed for testing. This change did not bypass any components or affect the RF output power delivered to the antenna.



WWW.SGS.COM

WHEN YOU NEED TO BE SURE

