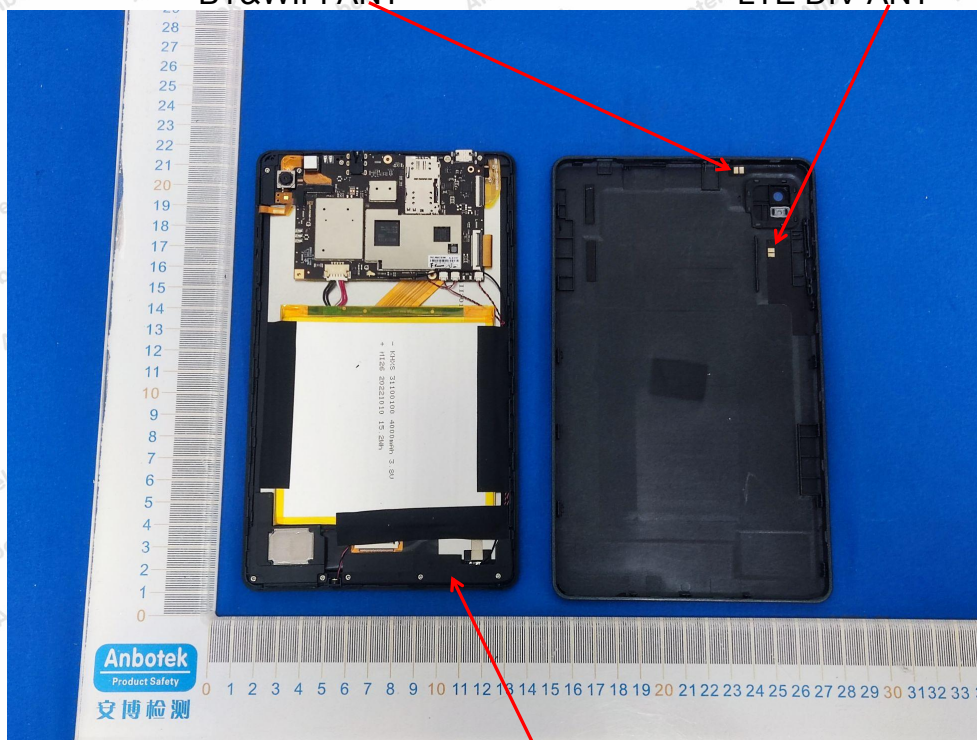
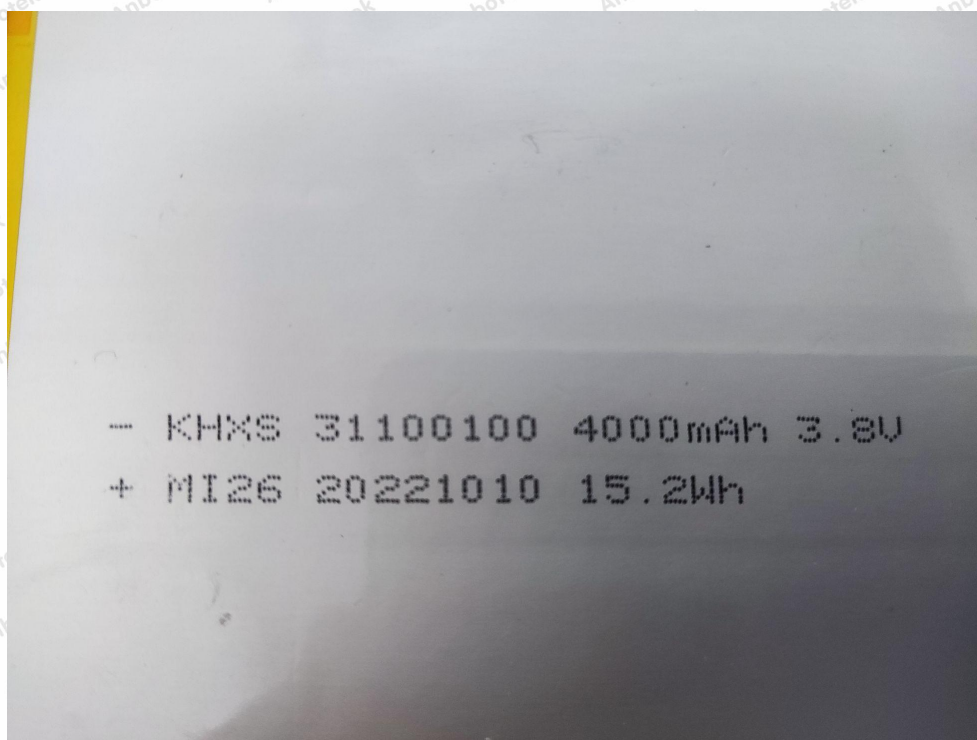


Internal Photograph  
BT&WIFI ANT

LTE DIV ANT



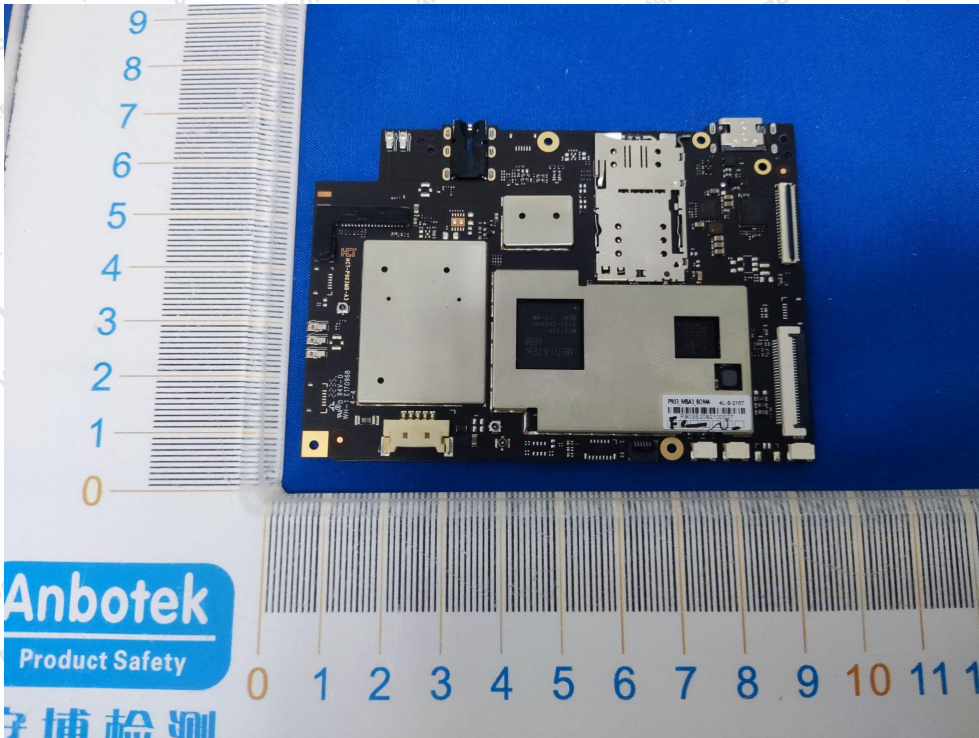
GSM&WCDMA&LTE Main ANT





# Anbotek

Product Safety



**Shenzhen Anbotek Compliance Laboratory Limited**

Address: 1/F., Building D, Sogood Science and Technology Park, Sanwei Community, Hangcheng Street, Bao'an District, Shenzhen, Guangdong, China.  
Tel: (86) 0755-26066440 Fax: (86) 0755-26014772 Email: service@anbotek.com

**Code: AB-RF-05-b**



Hotline

400-003-0500

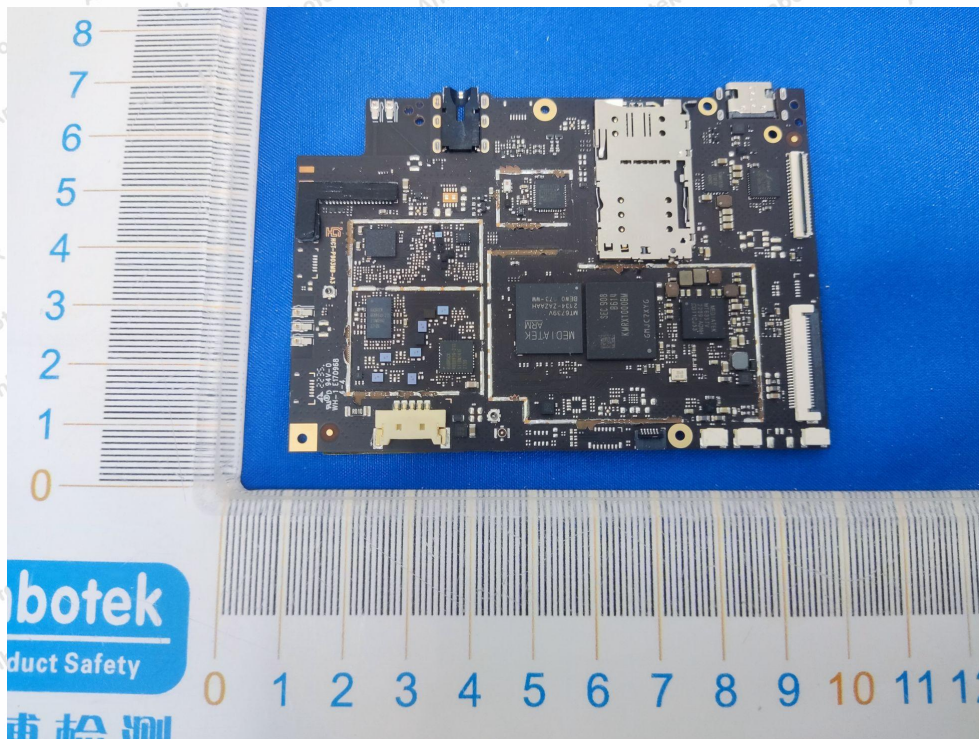
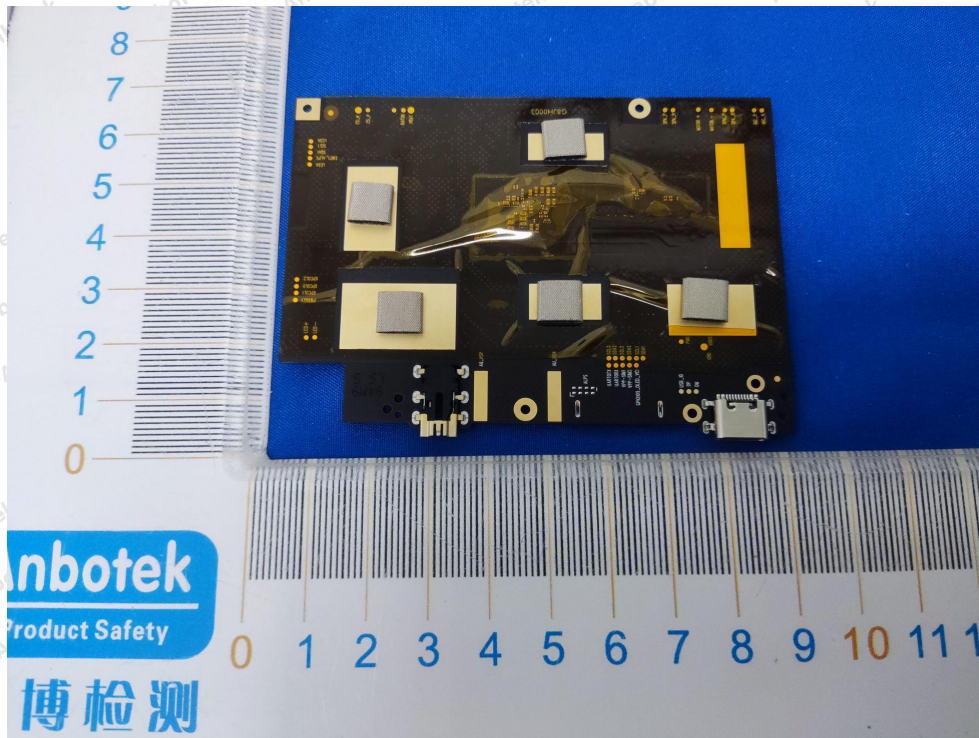
[www.anbotek.com.cn](http://www.anbotek.com.cn)





# Anbotek

Product Safety



**Shenzhen Anbotek Compliance Laboratory Limited**

Address: 1/F., Building D, Sogood Science and Technology Park, Sanwei Community, Hangcheng Street, Bao'an District, Shenzhen, Guangdong, China.  
Tel: (86) 0755-26066440 Fax: (86) 0755-26014772 Email: service@anbotek.com

**Code: AB-RF-05-b**



Hotline

400-003-0500

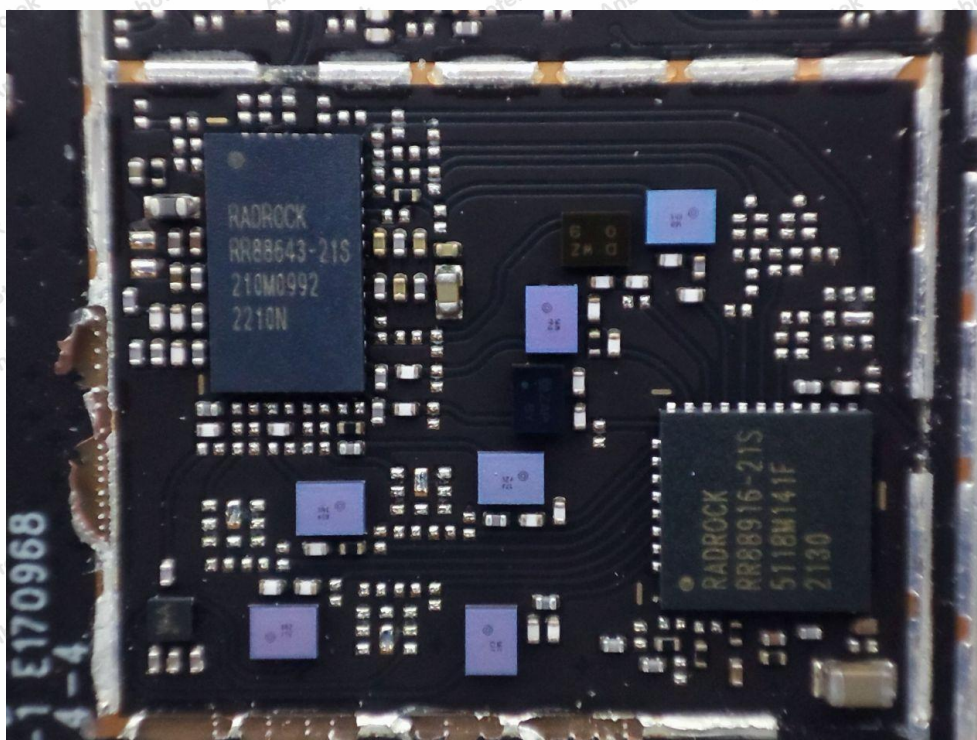
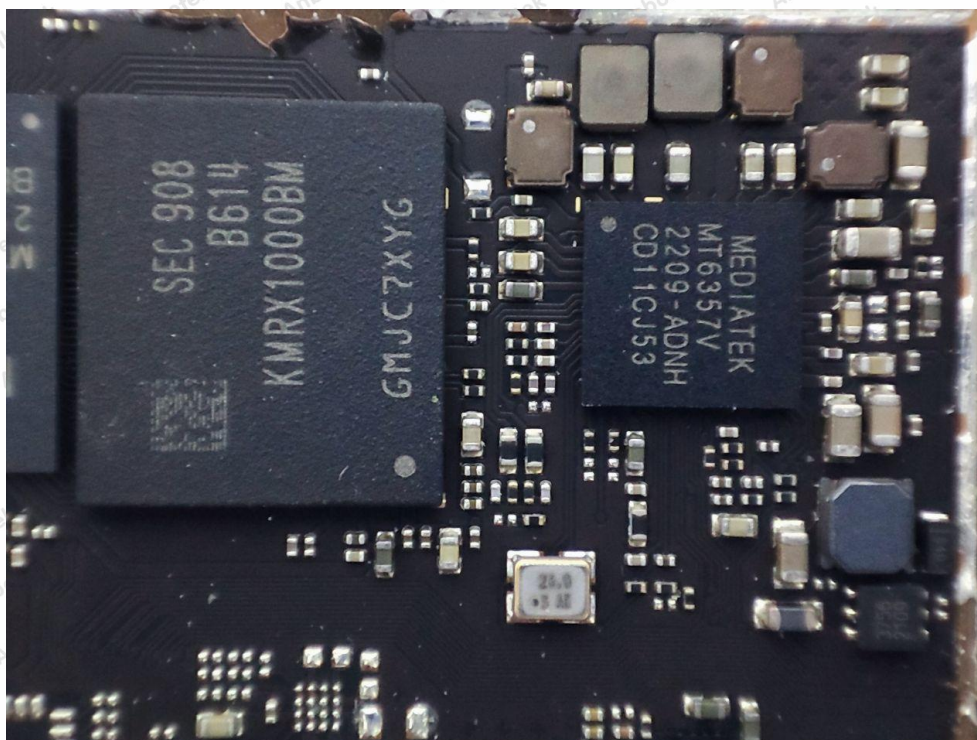
[www.anbotek.com.cn](http://www.anbotek.com.cn)





# Anbotek

Product Safety



**Shenzhen Anbotek Compliance Laboratory Limited**

Address: 1/F., Building D, Sogood Science and Technology Park, Sanwei Community,  
Hangcheng Street, Bao'an District, Shenzhen, Guangdong, China.  
Tel: (86) 0755-26066440 Fax: (86) 0755-26014772 Email: service@anbotek.com

**Code: AB-RF-05-b**



Hotline

400-003-0500

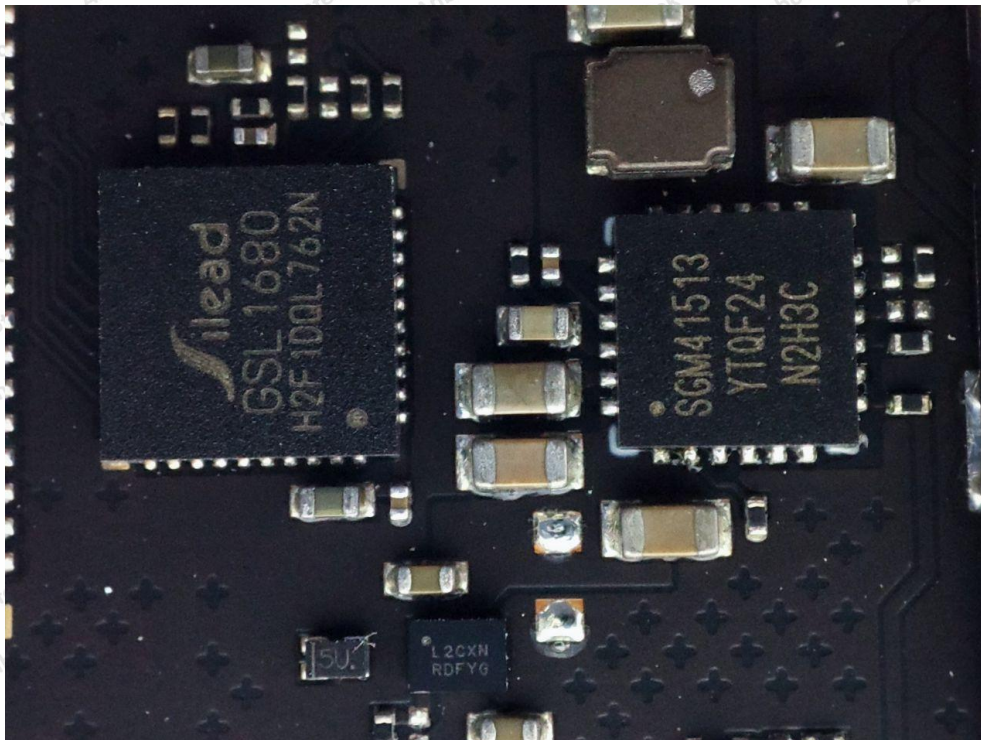
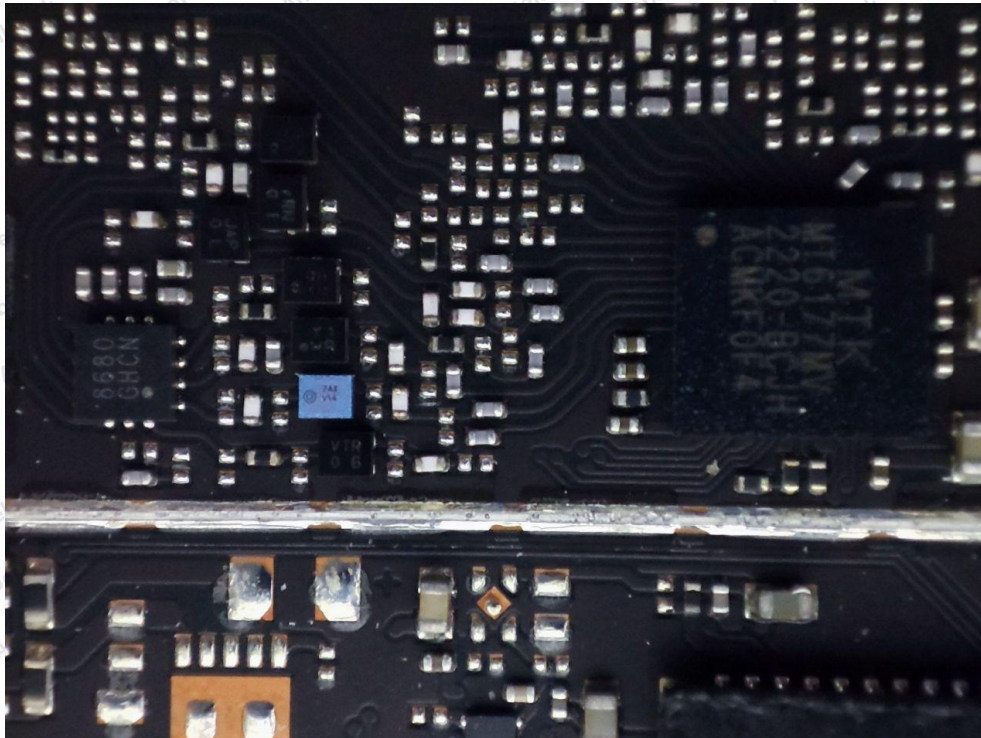
[www.anbotek.com.cn](http://www.anbotek.com.cn)





# Anbotek

Product Safety



**Shenzhen Anbotek Compliance Laboratory Limited**

Address: 1/F., Building D, Sogood Science and Technology Park, Sanwei Community,  
Hangcheng Street, Bao'an District, Shenzhen, Guangdong, China.  
Tel: (86) 0755-26066440 Fax: (86) 0755-26014772 Email: service@anbotek.com

**Code: AB-RF-05-b**



Hotline

400-003-0500

[www.anbotek.com.cn](http://www.anbotek.com.cn)

