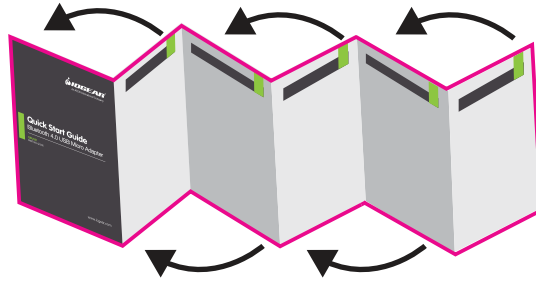


0, 0, 0, 75
50, 0, 100, 0



Quick Start Guide Powerline Wireless Extender

GPLWE150
PART NO. Q1337

www.iogear.com

Package Contents

1 x GPLWE150 Powerline Wireless Extender
1 x Ethernet Cable (5ft)
1 x Quick Start Guide
1 x Warranty Card

System Requirements

For Internet Access:

- Cable or DSL Modem
- Router
- Subscription with an Internet Service Provider (ISP)

For Powerline Network:

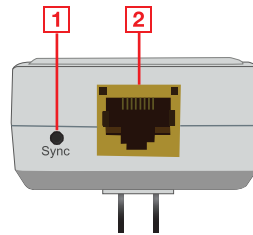
- 2 or more Standard Power Outlets
- 2 or more Powerline adapters

Note: An existing Powerline network is REQUIRED for the wireless extender to operate correctly

Overview

Extender (Bottom View)

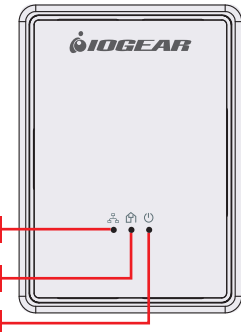
1. Sync / Reset Button
2. Ethernet Port



Press and Hold Time	Description
1-3 seconds	Secures your network and pairs adapters. When pairing multiple adapters, button should be pressed within 2 minutes of each other.
10-15 seconds	Resets the adapter clearing all data and restoring all settings to the factory default values.

Extender (Front View)

1. Ethernet Link LED ()
2. PLC Link LED ()
3. Power LED ()

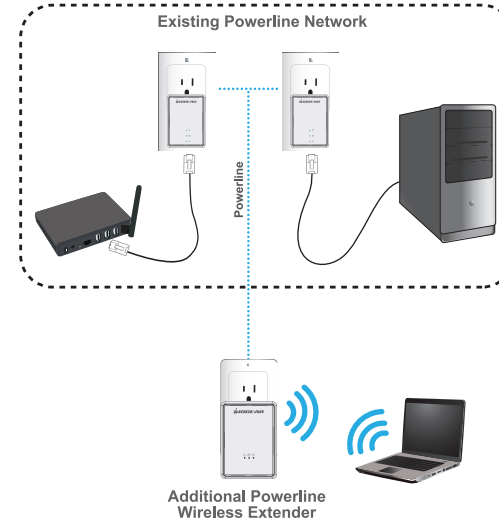


LED	Description
Ethernet Link 	<ul style="list-style-type: none">• Solid Green: Extender is connected to a powered-on Ethernet device• Blinking Green: The Ethernet port is transferring data• Off: No Ethernet connection
PLC Link 	<ul style="list-style-type: none">• Solid: The extender is connected to a Powerline network• Off: Extender has not found another compatible Powerline device using the same encryption key <p>PLC Link LED will indicate overall speed of your network with 3 colors:</p> <ul style="list-style-type: none">• Green: Fast link rate with optimal network speed ≥ 100Mbps• Amber: Normal signal with standard network speed between 50 - 99Mbps• Red: Slow link rate with slow network speed < 50Mbps• Off: No activity and extender is not connected
Power 	<ul style="list-style-type: none">• Solid Green: The extender is On• Blinking green: Extender is in Standby mode• Off: The extender does not have electrical power

Hardware Installation

Connect the Powerline Wireless Extender to your existing Powerline network

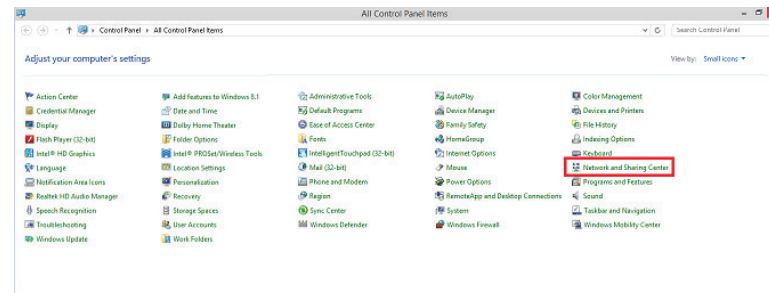
1. Make sure you have an existing Powerline Ethernet adapter connected to your router/modem and plugged into a wall outlet.*
2. Plug the Powerline Wireless Extender into an available power outlet.*
3. After 30 seconds, the PLC Link LED will light solid in a color indicating the signal strength of your Powerline connection.
4. The Powerline Wireless Extender is now connected to your existing Powerline network.



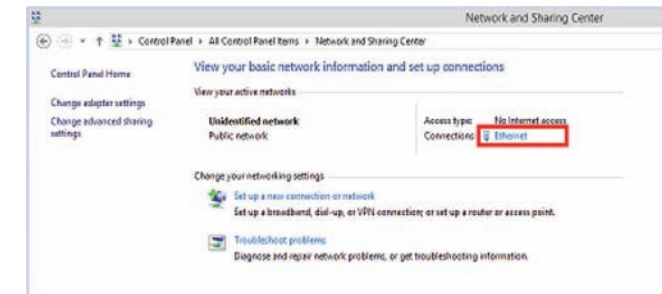
***Warning: Do not plug this Powerline device into a power strip that has surge protection. Doing so will degrade Powerline performance. For best results, plug all Powerline devices directly into a wall outlet.**

Configuring your Powerline Wireless Extender

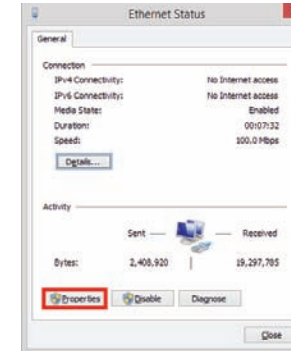
1. Start by disabling the Wi-Fi connection on your PC.
2. Connect your PC to the Ethernet port on the Powerline Wireless Extender using the included Ethernet cable.
3. Next, open **Control Panel** on your PC and access the **Network and Sharing Center**.



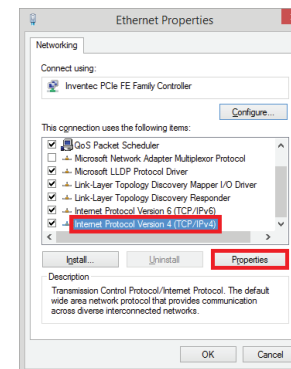
4. Click on **Ethernet**.



5. Select **Properties**.

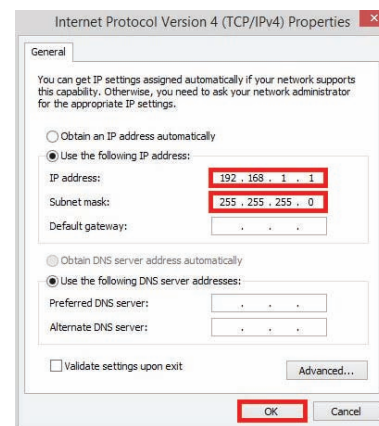


6. Click to highlight **Internet Protocol Version 4 (TCP/IPv4)** and select **Properties**.

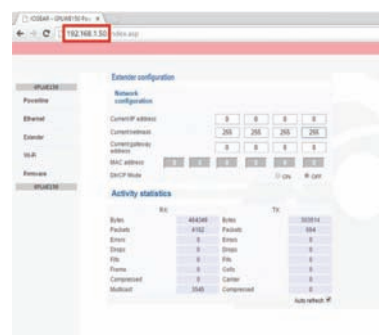


6

7. Choose **Use the following IP address**. Set the IP address to **192.168.1.1** and the Subnet Mask to **255.255.255.0** as shown in the image below. Click **OK** to continue.



8. Next, launch your Internet browser and type **192.168.1.50** into the address bar. The web based wireless configuration tool will appear.

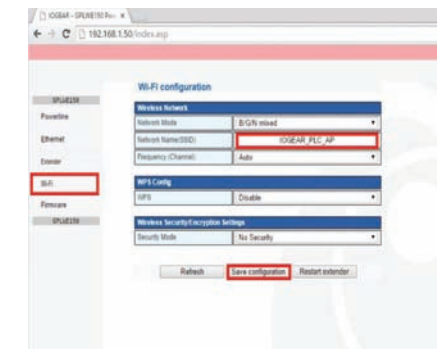


Configuring Wireless Security Settings

7

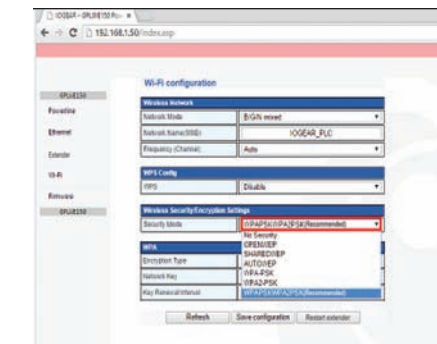
Option 1: Setting a Custom Network Name (SSID)

1. Select the **Wi-Fi** option on the left side of the configuration page.
2. Click the **Network Name (SSID)** text box and enter the desired Network Name.
3. Click the **Save configuration** button. A message will appear stating the wireless extender must be restarted for the changes to be applied. Click **OK** to proceed.



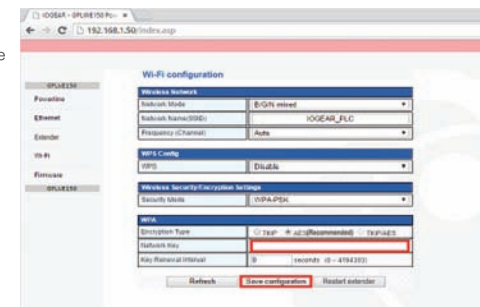
Option 2: Select Wireless Security Encryption Type and Password

1. On the Wi-Fi configuration page, click the **Security Mode** drop down menu and select the desired encryption type.

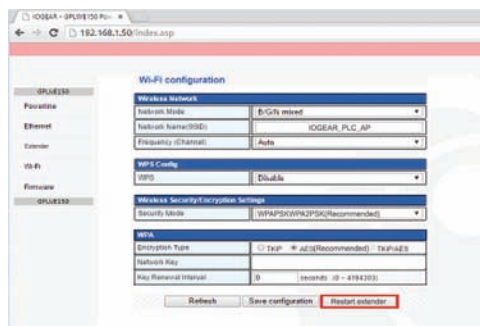


8

2. Once selected, type in the desired Network Key. Each Encryption type will have different requirements for the Network Key. Select the type most suitable for your wireless environment.
3. After the desired Network Key is selected, click **Save configuration**. A message will appear stating the wireless extender must be restarted for the changes to be applied.

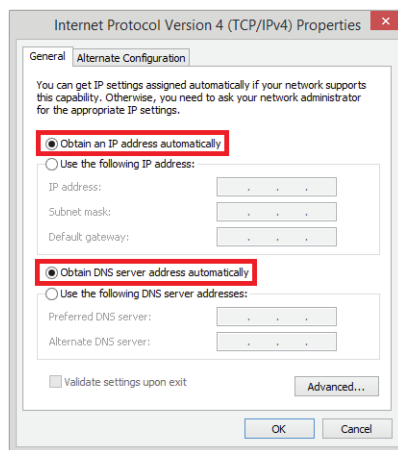


4. To apply the custom settings to your Powerline Wireless Extender, click **Restart extender**.



9

5. Once restarted, the Powerline Wireless Extender set up is complete and ready to connect to your devices.
6. Close your browser and change the network settings on your PC back to DHCP (**Obtain an IP address automatically**) and **Obtain DNS server address automatically**. Refer to steps 3 through 7 in **Configuring your Powerline Wireless Extender**. Also do not forget to enable your Wi-Fi connection if you disabled it.



This Quick Start Guide is intended to cover basic setup and key functions to get you up and running quickly.

For a complete explanation of setup and features, please download the Powerline Wireless Extender Manual from www.IOGEAR.com/product/GPLWE150.

Compliance Information

Federal Communication Commission Interference Statement

This device complies with Part 15 of the FCC Rules. Operation is subject to the following two conditions:

- (1) This device may not cause harmful interference, and
- (2) this device must accept any interference received, including interference that may cause undesired operation.

This equipment has been tested and found to comply with the limits for a Class B digital device, pursuant to Part 15 of the FCC Rules. These limits are designed to provide reasonable protection against harmful interference in a residential installation. This equipment generates, uses and can radiate radio frequency energy and, if not installed and used in accordance with the instructions, may cause harmful interference to radio communications. However, there is no guarantee that interference will not occur in a particular installation. If this equipment does cause harmful interference to radio or television reception, which can be determined by turning the equipment off and on, the user is encouraged to try to correct the interference by one of the following measures:

- Reorient or relocate the receiving antenna.
- Increase the separation between the equipment and receiver.
- Connect the equipment into an outlet on a circuit different from that to which the receiver is connected.
- Consult the dealer or an experienced radio/TV technician for help.

FCC Caution: Any changes or modifications not expressly approved by the party responsible for compliance could void the user's authority to operate this equipment.

This transmitter must not be co-located or operating in conjunction with any other antenna or transmitter.

FOR MOBILE DEVICE USAGE (>20cm/low power)

Radiation Exposure Statement:

This equipment complies with FCC radiation exposure limits set forth for an uncontrolled environment. This equipment should be installed and operated with minimum distance 20cm between the radiator & your body.

FOR COUNTRY CODE SELECTION USAGE (WLAN DEVICES)

Note: The country code selection is for non-US model only and is not available to all US model. Per FCC regulation, all WiFi product marketed in US must fixed to US operation channels only.

IC Compliance

This device complies with Industry Canada licence-exempt RSS standard(s). Operation is subject to the following two conditions:

- (1) This device may not cause interference, and
- (2) this device must accept any interference, including interference that may cause undesired operation of the device.

IC ID: FD150520C27

Limited Warranty

Warranty Information

This product carries a 1 Year Limited Warranty. For the terms and conditions of this warranty, please go to <http://www.iogear.com/support/warranty>

Register online at <http://www.iogear.com/register>

Important Product Information

Product Model _____

Serial Number _____

Contact

WE'RE HERE TO HELP YOU! NEED ASSISTANCE SETTING UP THIS PRODUCT?

Make sure you:

1. Visit www.iogear.com for more product information
2. Visit www.iogear.com/support for live help and product support

iogear.custhelp.com
support@iogear.com
www.iogear.com
19641 Da Vinci, Foothill Ranch, CA 92610