

Appendix B

2.4G Ant1
2.4G Ant2

Device Under Test Properties

Model	Dimensions [mm]	IMEI
M71R1	40.0 x 30.0 x 10.0	

Exposure Conditions

Phantom Section, TSL	Position, Test Distance [mm]	Band	Group, UID	Frequency [MHz], Channel Number	TSL Conductivity [S/m]	TSL Permittivity
Flat, HSL	BACK, 0.00	ISM 2.4 GHz Band	Bluetooth, 10670-AAA	2478.000, 38	1.87	39.5

Hardware Setup

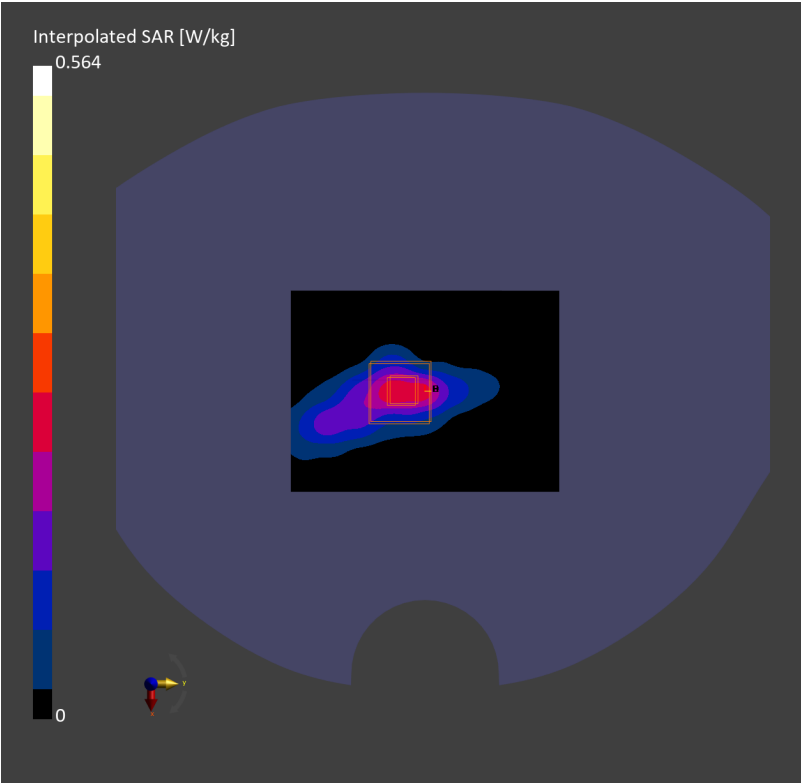
Phantom	TSL	Probe, Calibration Date	DAE, Calibration Date
Twin-SAM V8.0 (30deg probe tilt) – 2168	HSL2450	EX3DV4 – SN7812, 2024-06-25	DAE4ip Sn1846, 2024-12-10

Scans Setup

	Area Scan	Zoom Scan
Grid Extents [mm]	72.0 x 96.0	30.0 x 30.0 x 30.0
Grid Steps [mm]	12.0 x 12.0	5.0 x 5.0 x 5.0
Sensor Surface [mm]	3.0	1.4
Graded Grid	N/A	Yes
Grading Ratio	N/A	1.5
MAIA	Y	N/A
Surface Detection	VMS + 6p	VMS + 6p
Scan Method	Measured	Measured

Measurement Results

	Area Scan	Zoom Scan
Date	2025-01-02, 22:35	2025-01-02, 22:41
psSAR1g [W/Kg]	0.210	0.231
psSAR10g [W/Kg]	0.096	0.094
Power Drift [dB]	0.00	-0.03
Power Scaling	Disabled	Disabled
Scaling Factor [dB]		
TSL Correction	No correction	No correction
M2/M1 [%]		37.1
Dist 3dB Peak [mm]		5.2



Device Under Test Properties

Model	Dimensions [mm]	IMEI
M71R1	40.0 x 30.0 x 10.0	

Exposure Conditions

Phantom Section, TSL	Position, Test Distance [mm]	Band	Group, UID	Frequency [MHz], Channel Number	TSL Conductivity [S/m]	TSL Permittivity
Flat, HSL	BACK, 0.00	ISM 2.4 GHz Band	Bluetooth, 10670-AAA	2478.000, 38	1.87	39.5

Hardware Setup

Phantom	TSL	Probe, Calibration Date	DAE, Calibration Date
Twin-SAM V8.0 (30deg probe tilt) – 2168	HSL2450	EX3DV4 – SN7812, 2024-06-25	DAE4ip Sn1846, 2024-12-10

Scans Setup

	Area Scan	Zoom Scan
Grid Extents [mm]	72.0 x 72.0	30.0 x 30.0 x 30.0
Grid Steps [mm]	12.0 x 12.0	5.0 x 5.0 x 5.0
Sensor Surface [mm]	3.0	1.4
Graded Grid	N/A	Yes
Grading Ratio	N/A	1.5
MAIA	N/A	N/A
Surface Detection	VMS + 6p	All points
Scan Method	Measured	Measured

Measurement Results

	Area Scan	Zoom Scan
Date	2025-01-02, 23:43	2025-01-02, 23:52
psSAR1g [W/Kg]	0.443	0.576
psSAR10g [W/Kg]	0.184	0.206
Power Drift [dB]	0.18	0.00
Power Scaling	Disabled	Disabled
Scaling Factor [dB]		
TSL Correction	No correction	No correction
M2/M1 [%]		33.5
Dist 3dB Peak [mm]		5.1

