

The University of Michigan  
Radiation Laboratory  
3228 EECS Building  
Ann Arbor, MI 48109-2122  
Tel: (734) 764-0500

Measured Radio Frequency Emissions  
From

**Martec Access Products, Inc.  
Garage Door Opener Receiver  
Model HL-1001**

Report No. 415031-096

October 5, 2001

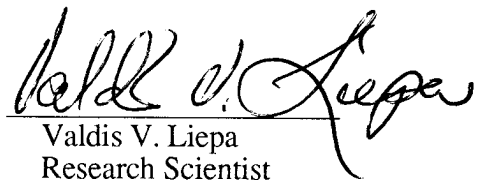
Copyright © 2001

For:  
Martec Access Products, Inc.  
240 Sheffield Street  
Mountainside, NJ 07092

Contact:  
Cathie Moran  
Tel: 908-233-0691  
Fax: 908-233-4111  
PO: 2296-00

Measurements made by: Joseph Brunett  
Valdis V. Liepa

Tests supervised by:  
Report approved by:

  
Valdis V. Liepa  
Research Scientist

---

**Summary**

Tests for compliance with FCC Regulations Part 15, Subpart B, and with Industry Canada Regulations, RSS-210, were performed on Martec Receiver. This device is subject to FCC Rules and Regulations as a Receiver and as a Digital Device. Since it plugs in AC outlet, it is also subject to conducted emissions, Class B.

In testing performed on August 30 and September 5, 2001, the device tested in the worst case met the allowed FCC (Class B) specifications for radiated emissions by 5.3 dB, and the line conducted and digital emissions by at least 20 dB (see p. 6).

## 1. Introduction

Martec Garage Door Opener Receiver was tested for compliance with FCC Regulations, Part 15, adopted under Docket 87-389, April 18, 1989, and with Industry Canada RSS-210, Issue 2, dated February 14, 1998. The tests were performed at the University of Michigan Radiation Laboratory Willow Run Test Range following the procedures described in ANSI C63.4-1992 "Methods of Measurement of Radio-Noise Emissions from Low-Voltage Electrical and Electronic Equipment in the Range of 9 kHz to 40 GHz". The Site description and attenuation characteristics of the Open Site facility are on file with FCC Laboratory, Columbia, Maryland (FCC Reg. No: 91050) and with Industry Canada, Ottawa, ON (File Ref. No: IC 2057).

## 2. Test Procedure and Equipment Used

The pertinent test equipment commonly used in our facility for measurements is listed in Table 2.1 below. The middle column identifies the specific equipment used in these tests.

Table 2.1. Test equipment.

| Test Instrument                    | Eqpt Used | Manufacturer/Model                     |
|------------------------------------|-----------|--|
| Spectrum Analyzer (0.1-1500 MHz)   |           | Hewlett-Packard, 182T/8558B            |
| Spectrum Analyzer (9kHz-22GHz)     | X         | Hewlett-Packard 8593A SN: 3107A01358   |
| Spectrum Analyzer (9kHz-26GHz)     | X         | Hewlett-Packard 8593E, SN: 3412A01131  |
| Spectrum Analyzer (9kHz-26GHz)     |           | Hewlett-Packard 8563E, SN: 3310A01174  |
| Spectrum Analyzer (9kHz-40GHz)     |           | Hewlett-Packard 8564E, SN: 3745A01031  |
| Power Meter                        |           | Hewlett-Packard, 432A                  |
| Power Meter                        |           | Anritsu, ML4803A/MP                    |
| Harmonic Mixer (26-40 GHz)         |           | Hewlett-Packard 11970A, SN: 3003A08327 |
| Harmonic Mixer (40-60 GHz)         |           | Hewlett-Packard 11970U, SN: 2332A00500 |
| Harmonic Mixer (75-110 GHz)        |           | Hewlett-Packard 11970W, SN: 2521A00179 |
| Harmonic Mixer (140-220 GHz)       |           | Pacific Millimeter Prod., GMA, SN: 26  |
| S-Band Std. Gain Horn              |           | S/A, Model SGH-2.6                     |
| C-Band Std. Gain Horn              |           | University of Michigan, NRL design     |
| XN-Band Std. Gain Horn             |           | University of Michigan, NRL design     |
| X-Band Std. Gain Horn              |           | S/A, Model 12-8.2                      |
| X-band horn (8.2- 12.4 GHz)        |           | Narda 640                              |
| X-band horn (8.2- 12.4 GHz)        |           | Scientific Atlanta , 12-8.2, SN: 730   |
| K-band horn (18-26.5 GHz)          |           | FXR, Inc., K638KF                      |
| Ka-band horn (26.5-40 GHz)         |           | FXR, Inc., U638A                       |
| U-band horn (40-60 GHz)            |           | Custom Microwave, HO19                 |
| W-band horn(75-110 GHz)            |           | Custom Microwave, HO10                 |
| G-band horn (140-220 GHz)          |           | Custom Microwave, HO5R                 |
| Bicone Antenna (30-250 MHz)        | X         | University of Michigan, RLBC-1         |
| Bicone Antenna (200-1000 MHz)      | X         | University of Michigan, RLBC-2         |
| Dipole Antenna Set (30-1000 MHz)   |           | University of Michigan, RLDP-1,-2,-3   |
| Dipole Antenna Set (30-1000 MHz)   |           | EMCO 2131C, SN: 992                    |
| Active Rod Antenna (30 Hz-50 MHz)  |           | EMCO 3301B, SN: 3223                   |
| Active Loop Antenna (30 Hz-50 MHz) |           | EMCO 6502, SN:2855                     |
| Ridge-horn Antenna (300-5000 MHz)  | X         | University of Michigan                 |
| Amplifier (5-1000 MHz)             | X         | Avantak, A11-1, A25-1S                 |
| Amplifier (5-4500 MHz)             | X         | Avantak                                |
| Amplifier (4.5-13 GHz)             |           | Avantek, AFT-12665                     |
| Amplifier (6-16 GHz)               |           | Trek                                   |
| Amplifier (16-26 GHz)              |           | Avantek                                |
| LISN (50 µH)                       |           | University of Michigan                 |
| Signal Generator (0.1-2060 MHz)    |           | Hewlett-Packard, 8657B                 |
| Signal Generator (0.01-20 GHz )    |           | Hewlett-Packard                        |

### 3. Configuration and Identification of Device Under Test

The DUT is a 310.0 MHz superregenerative receiver, designed for remote activation of garage door openers. It is housed in a plastic case approximately 5 by 4 by 1 inches and has permanently attached pigtail antenna 8.5 inches long. It has a relay out and 24 VAC in. For testing a 3-meter long wire was used for the relay out and the connection from the 24 VAC (200 mA) wall transformer.

The DUT was designed and manufactured by Martec Access Products, Inc., 240 Sheffield Street, Mountainside, NJ 07092. It is identified as:

Martec Garage Door Opener Receiver  
Model: HL-1001  
S/N: FCCTEST  
FCC ID: JCQ-995  
CANADA: to be provided by IC

#### 3.1 Modifications Made

There were no modifications made to the DUT by this laboratory.

### 4. Emission Limits

For FCC the DUT falls under Part 15, Subpart B, "Unintentional Radiators". For Industry Canada the DUT falls under Receiver category and is subject to technical requirement of sections 7.1 to 7.4 in RSS-210. The pertinent test frequencies, with corresponding emission limits, are given in Tables 4.1 and 4.2 below.

#### 4.1 Radiated Emission Limits

Table 4.1. Radiated Emission Limits (FCC: 15.33, 15.35, 15.109; IC: RSS-210, 7.3).

| Freq. (MHz) | E <sub>lim</sub> (3m) $\mu$ V/m | E <sub>lim</sub> dB( $\mu$ V/m) |
|-------------|---------------------------------|---------------------------------|
| 30-88       | 100                             | 40.0                            |
| 88-216      | 150                             | 43.5                            |
| 216-960     | 200                             | 46.0                            |
| 960-2000    | 500                             | 54.0                            |

Note: Quasi-Peak readings apply to 1000 MHz (120 kHz BW)  
Average readings apply above 1000 MHz (1 MHz BW)

#### 4.2 Conducted Emission Limits

Table 4.2. Conducted Emission Limits (FCC: 15.107; IC: RSS-210, 6.6).

| Freq. (MHz)   | $\mu$ V | dB( $\mu$ V) |
|---------------|---------|--------------|
| 0.450 - 1.705 | 250     | 48.0         |
| 1.705 - 30.0  | 250     | 48.0         |

Note: Quasi-Peak readings apply here

### 4.3 Antenna Power Conduction Limits

(FCC: 15.111(a); IC: RSS-210, 7.2).  $P_{max} = 2 \text{ nW}$ ; for frequency range see Table 4.1.

## 5. Emission Tests and Results

NOTE: Even though the FCC and/or Industry Canada specify that both the radiated and conductive emissions be measured using the Quasi-Peak and/or average detection schemes, we normally use peak detection since especially the Quasi-Peak is cumbersome to use with our instrumentation. In case the measurement fails to meet the limits, or the measurement is near the limit, it is remeasured using appropriate detection. We note, that since the peak detected signal is always higher or equal to the Quasi-Peak or average detected signal, the margin of compliance may be better, but not worse, than indicated in this report. The type of detection used is indicated in the data table, Table 5.1.

### 5.1 Anechoic Chamber Radiated Emission Tests

To familiarize with the radiated emission behavior of the DUT, it was studied and measured in the shielded anechoic chamber. In the chamber there is a set-up similar to that of an outdoor 3-meter site, with turntable, antenna mast, and a ground plane. Instrumentation includes spectrum analyzers and other equipment as needed.

To study and test for radiated emissions, the DUT was powered by a 24 VAC wall transformer. A 310 MHz CW signal was injected (radiated) from a nearby signal generator using a short wire antenna. The DUT was placed on the test table on each of the three axis. At each orientation, the table was rotated to obtain maximum signal for vertical and horizontal emission polarizations. This sequence was repeated throughout the required frequency range.

In the chamber we studied and recorded all the emissions using a ridge-horn antenna, which covers 200 MHz to 5000 MHz, up to 2 GHz. In scanning from 30 MHz to 2.0 GHz, there were no spurious emissions observed other than the LO and injection signal (315 MHz), and the LO harmonics. Figures 5.1 and 5.2 show emissions measured 0-1000 MHz and 1000-2000 MHz, respectively. These measurements are made with a ridge-horn antenna at 3m, with spectrum analyzer in peak hold mode and the receiver rotated in all orientations. The measurements up to 1000 MHz (Fig. 5.1) are used for initial evaluation only, but those above 1000 MHz (Fig. 5.2) are used in final assessment for compliance.

### 5.2 Open Site Radiated Emission Tests

The DUT was then moved to the 3 meter Open Field Test Site where measurements were repeated up to 1000 MHz using a small bicone, or dipoles when the measurement is near the limit. The DUT was exercised as described in Sec. 5.1 above. The measurements were made with a spectrum analyzer using 120 kHz IF bandwidth and peak detection mode, and, when appropriate, using Quasi-Peak or average detection (see 5.0). The test set-up photographs are in Appendix (i.e., at end of this report).

The emissions from digital circuitry were measured using a standard bicone. These results are also presented in Table 5.1.

### 5.3 Computations and Results for Radiated Emissions

To convert the dBm's measured on the spectrum analyzer to dB( $\mu\text{V}/\text{m}$ ), we use expression

$$E_3(\text{dB}\mu\text{V}/\text{m}) = 107 + P_R + K_A - K_G$$

where  $P_R$  = power recorded on spectrum analyzer, dB, measured at 3m  
 $K_A$  = antenna factor, dB/m  
 $K_G$  = pre-amplifier gain, including cable loss, dB

When presenting the data, at each frequency the highest measured emission under all of the possible orientations is given. Computations and results are given in Table 5.1. There we see that the DUT meets the limit by 5.3 dB.

### 5.4 Conducted Emission Tests

This test was made using a LISN box and following standard FCC/IC accepted procedures. There were no conducted emissions detected, i.e., more than 20 dB below the FCC Class B limit.

## **6. Other Measurements**

### **6.1 Emission Spectrum Near Fundamental**

Near operating frequency the emission spectrum is measured typically over 50 MHz span with and without injection signal. These data are taken with the DUT close to antenna and hence amplitudes are relative. The plots are shown in Figure 6.1.

### **6.2 Effect of Supply Voltage Variation**

The DUT has been designed to operate from 12 VDC power. Using a spectrum analyzer, relative radiated emissions were recorded at the "fundamental" (310 MHz) as voltage was varied from 50 to 140 VAC. Figure 6.2 shows the emission variation.

### **6.3 Operating Voltage and Current**

$$\begin{aligned} V &= 115 \text{ VAC} \\ I &= 23.3 \text{ mA/AC} \end{aligned}$$

The University of Michigan  
Radiation Laboratory  
3228 EECS Building  
Ann Arbor, Michigan 48109-2122  
(734) 764-0500

**Table 5.1 Highest Emissions Measured**

| Radiated Emission - RF |              |              |              |           |              |            |          |              |                 |            | Martec RX; FCC/IC             |
|------------------------|--------------|--------------|--------------|-----------|--------------|------------|----------|--------------|-----------------|------------|-------------------------------|
| #                      | Freq.<br>MHz | Ant.<br>Used | Ant.<br>Pol. | Pr<br>dBm | Det.<br>Used | Ka<br>dB/m | Kg<br>dB | E3<br>dBμV/m | E3lim<br>dBμV/m | Pass<br>dB | Comments                      |
| 1                      | 309.2        | SBic         | H            | -70.6     | Pk           | 18.7       | 20.4     | 34.7         | 46.0            | 11.3       | side                          |
| 2                      | 309.2        | SBic         | V            | -71.6     | Pk           | 18.7       | 20.4     | 33.7         | 46.0            | 12.3       | flat                          |
| 3                      | 309.2        | SBic         | H            | -72.4     | Pk           | 18.7       | 20.4     | 32.9         | 46.0            | 13.1       | end                           |
| 4                      | 309.2        | SBic         | H            | -68.8     | Pk           | 18.7       | 20.4     | 36.5         | 46.0            | 9.5        | side                          |
| 5                      | 309.2        | SBic         | V            | -64.6     | Pk           | 18.7       | 20.4     | 40.7         | 46.0            | 5.3        | flat                          |
| 6                      | 309.2        | SBic         | V            | -70.4     | Pk           | 18.7       | 20.4     | 34.9         | 46.0            | 11.1       | end                           |
| 7                      | 620.0        | SBic         | H            | -86.4     | Pk           | 25.1       | 17.0     | 28.6         | 46.0            | 17.4       | max. of all, noise; 30 kHz BW |
| 8                      | 620.0        | SBic         | V            | -86.4     | Pk           | 25.1       | 17.0     | 28.6         | 46.0            | 17.4       | max. of all, noise; 30 kHz BW |
| 9                      | 930.0        | SBic         | H            | -84.8     | Pk           | 28.7       | 14.7     | 36.2         | 46.0            | 9.8        | max. of all, noise; 30 kHz BW |
| 10                     | 930.0        | SBic         | V            | -84.8     | Pk           | 28.7       | 14.7     | 36.2         | 46.0            | 9.8        | max. of all, noise; 30 kHz BW |
| 11                     | 1100.0       | Horn         | H            | -67.0     | Pk           | 20.4       | 28.0     | 32.4         | 54.0            | 21.6       | max. of all                   |
| 12                     | 1500.0       | Horn         | H            | -62.0     | Pk           | 20.6       | 28.0     | 37.6         | 54.0            | 16.4       | max. of all                   |
| 13                     | 1900.0       | Horn         | H            | -68.0     | Pk           | 20.8       | 28.2     | 31.6         | 54.0            | 22.4       | max. of all                   |
| 14                     |              |              |              |           |              |            |          |              |                 |            |                               |
| 15                     |              |              |              |           |              |            |          |              |                 |            |                               |
| 16                     |              |              |              |           |              |            |          |              |                 |            |                               |
| 17                     |              |              |              |           |              |            |          |              |                 |            |                               |
| 18                     |              |              |              |           |              |            |          |              |                 |            |                               |

| Radiated Emission - Digital (Class B) |  |  |  |  |  |  |  |  |  |  |  |
|---------------------------------------|--|--|--|--|--|--|--|--|--|--|--|
| 1                                     |  |  |  |  |  |  |  |  |  |  |  |
| 2                                     |  |  |  |  |  |  |  |  |  |  |  |
| 3                                     | Digital Emissions more than 20 dB below FCC Class B limits |  |  |  |  |  |  |  |  |  |  |
| 4                                     |  |  |  |  |  |  |  |  |  |  |  |
| 5                                     |  |  |  |  |  |  |  |  |  |  |  |
| 6                                     |  |  |  |  |  |  |  |  |  |  |  |
| 7                                     |  |  |  |  |  |  |  |  |  |  |  |
| 8                                     |  |  |  |  |  |  |  |  |  |  |  |
| 9                                     |  |  |  |  |  |  |  |  |  |  |  |
| 10                                    |  |  |  |  |  |  |  |  |  |  |  |
| 11                                    |  |  |  |  |  |  |  |  |  |  |  |
| 12                                    |  |  |  |  |  |  |  |  |  |  |  |

| Conducted Emissions |   |              |              |               |              |            |          |
|---------------------|---|--------------|--------------|---------------|--------------|------------|----------|
| #                   | Freq.<br>MHz  | Line<br>Side | Det.<br>Used | Vtest<br>dBμV | Vlim<br>dBμV | Pass<br>dB | Comments |
| 1                   |   |              |              |               |              |            |          |
| 2                   | Emissions in the noise floor; meets Class B limit by at least 20 dB |              |              |               |              |            |          |
| 3                   |   |              |              |               |              |            |          |

Meas. 08/30/01, 09/05/01; U of Mich.

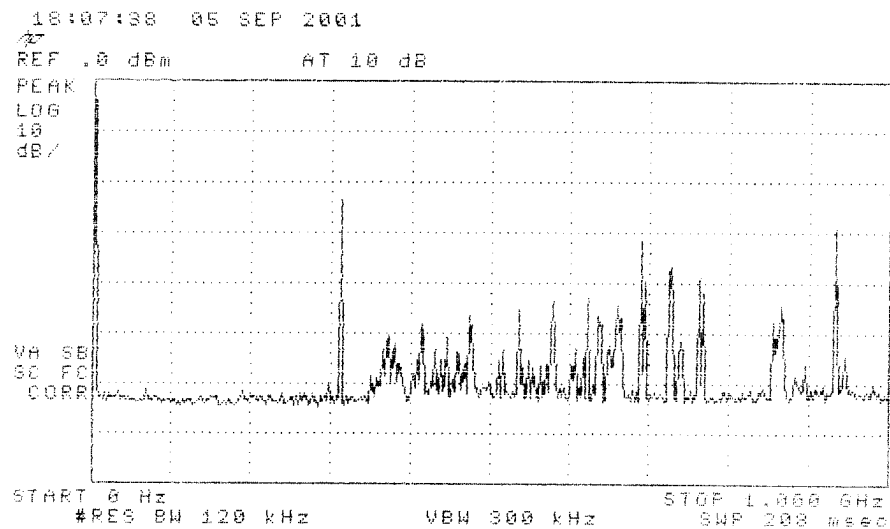
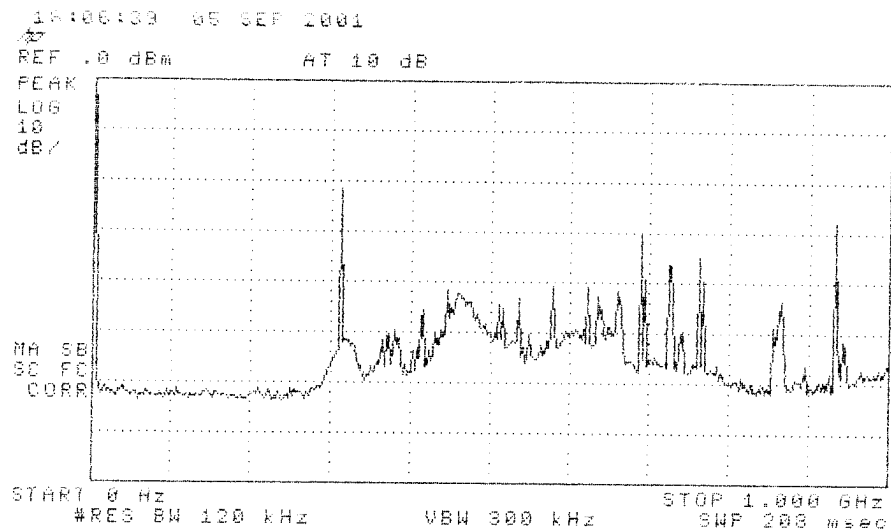


Figure 5.1. Emissions measured at 3 meters in anechoic chamber, 0-1000 MHz.  
(top) Receiver plus ambient  
(bottom) Ambient

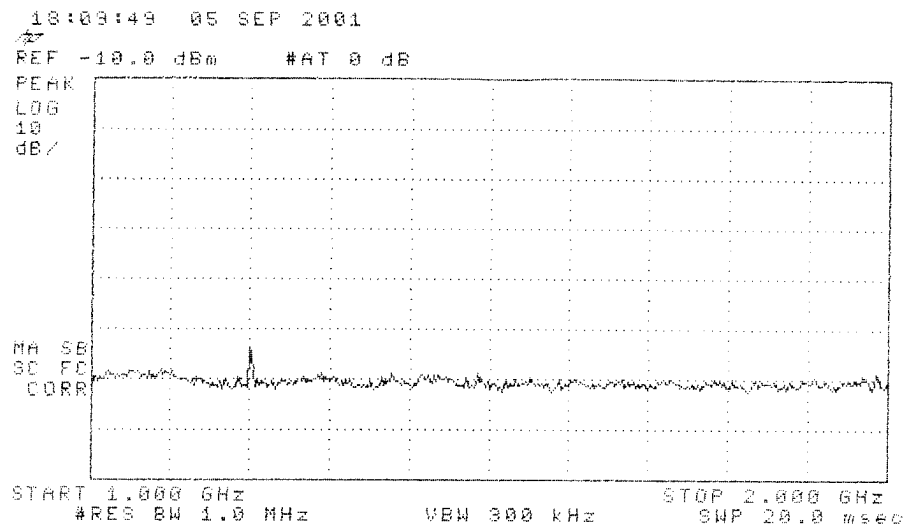
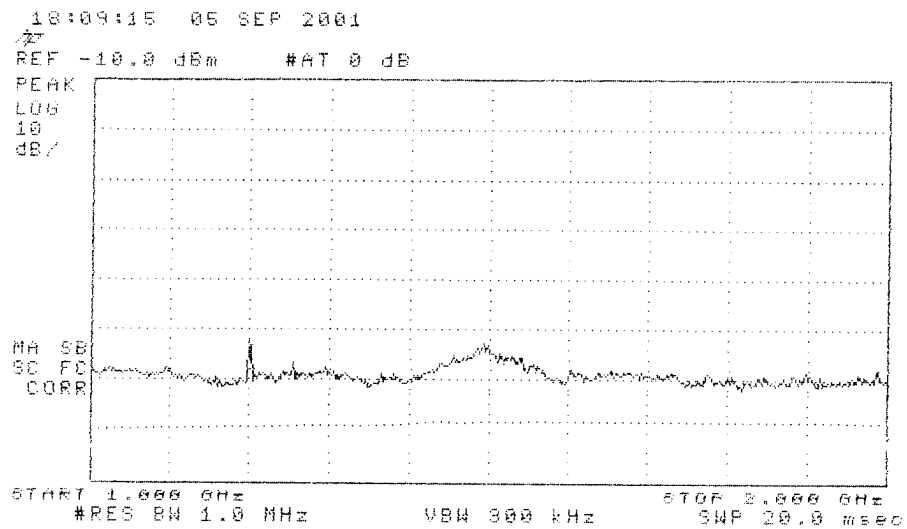


Figure 5.2. Emissions measured at 3 meters in anechoic chamber, 1000-2000 MHz.  
(top) Receiver plus ambient  
(bottom) Ambient



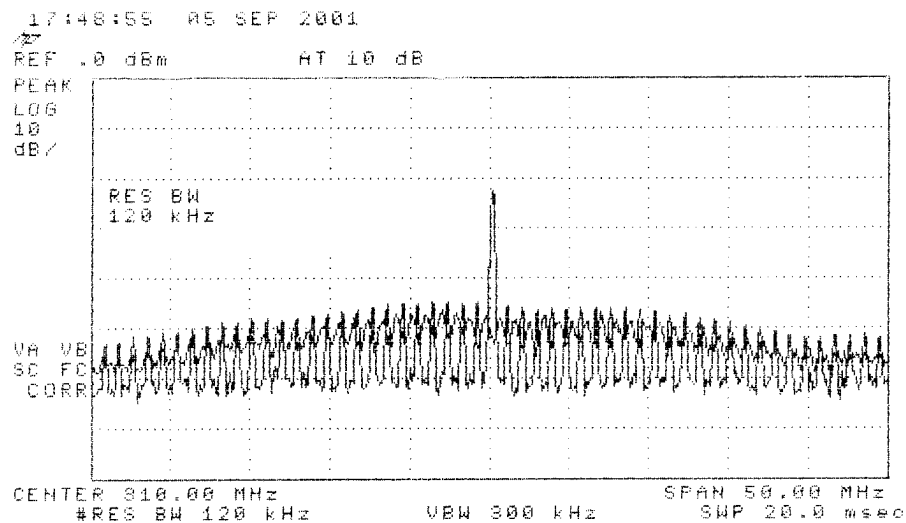


Figure 6.1. Relative receiver emissions in stand-by and "locked-in" modes.  
The final emission measurements were made with the receiver in "locked-in" mode.

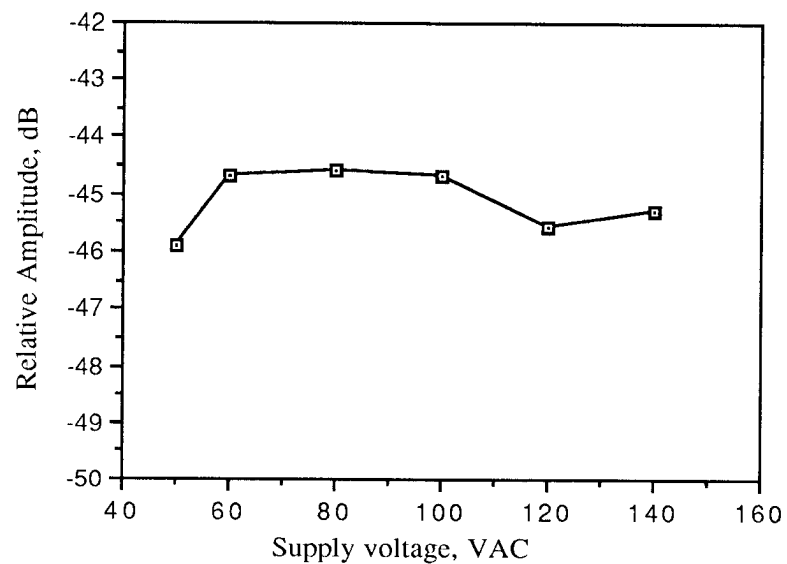


Figure 6.2. Relative emission at "fundamental" vs. supply voltage.