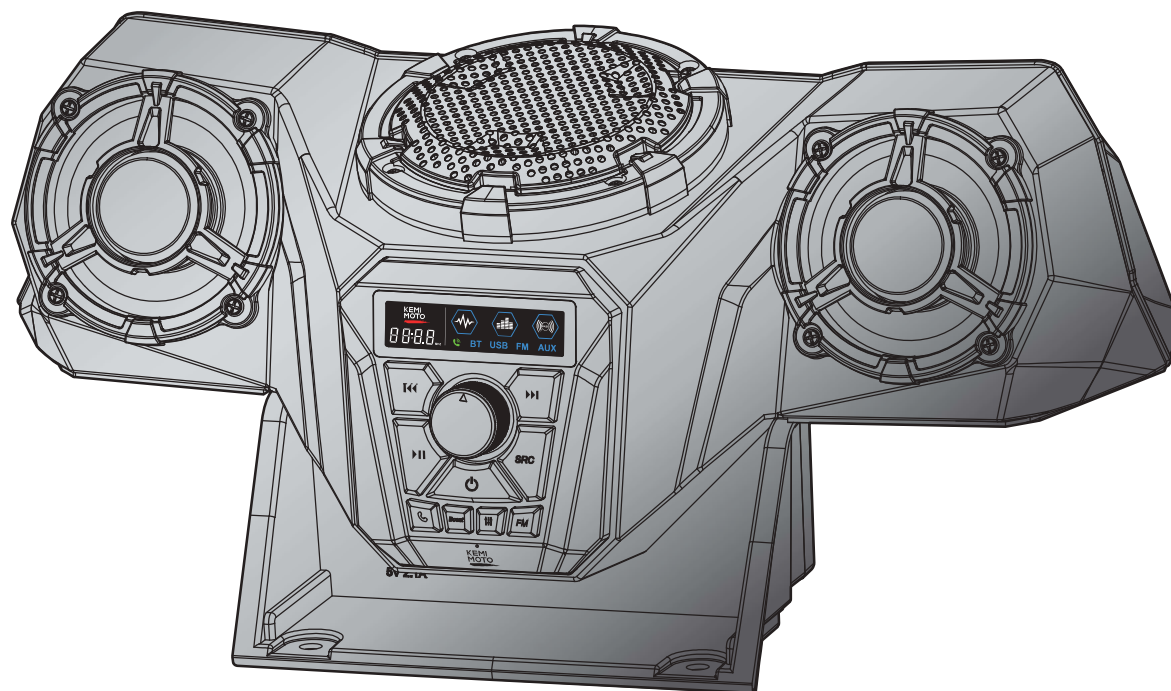




# PRODUCT MANUAL

## KM-Ranger



SKU: B0117-03015-BK



Complete journey of dreams



## IMPORTANT INFORMATION

- 1. Fitment Test Required:** Before removing the protective film (if any), please test the item to ensure it fits your setup properly.
- 2. Maintain Packaging:** Do not discard the packaging until the product has been successfully installed.

## BEFORE YOU BEGIN

1. Please read the instructions carefully and verify that each item is in the list.
2. Please retain these installation instructions for further reference and parts ordering information.
3. If the vehicle is clean and free of other debris, it will be easy to install.
4. For your safety and to ensure a satisfactory installation, please complete all the installation steps in the order shown below.

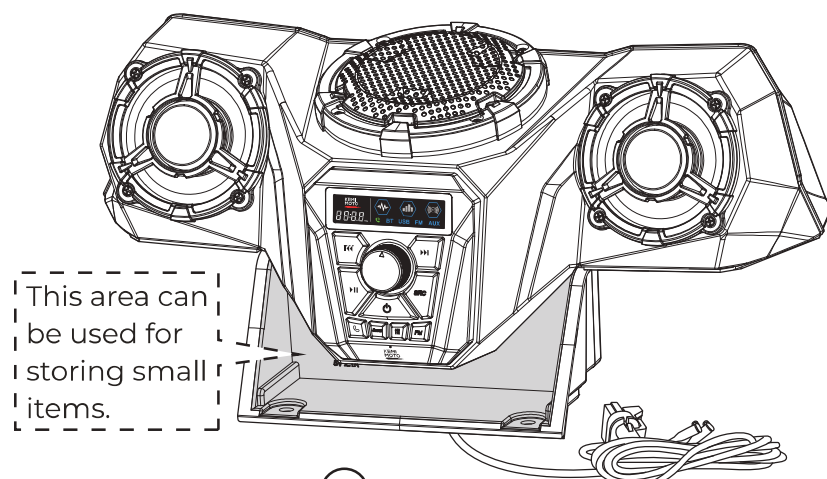
## ATTENTION

Please test the speakers to ensure they are working properly before installation.

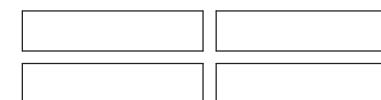
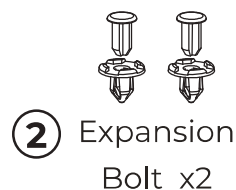
Estimated installation  
time:

**15 minutes**

## PRODUCT INFORMATION

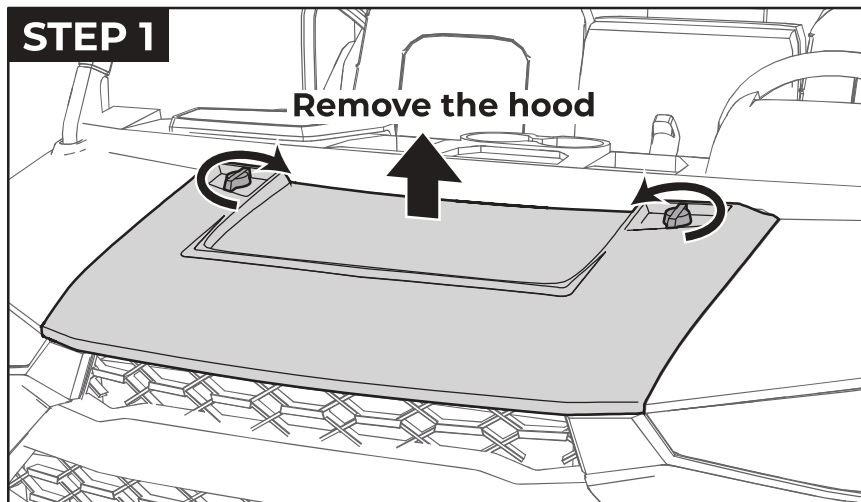


**1** Audio  
System x1



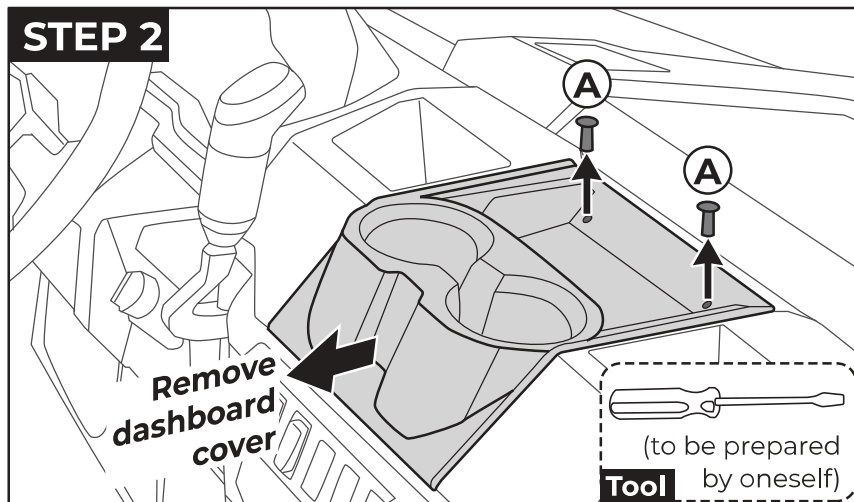
## INSTALLATION TIPS

### STEP 1



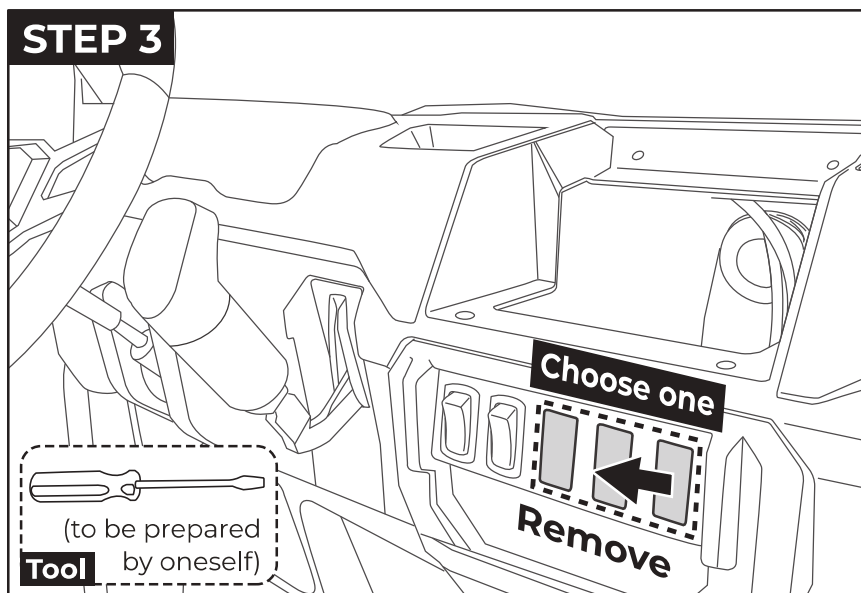
Remove the hood as shown.

### STEP 2



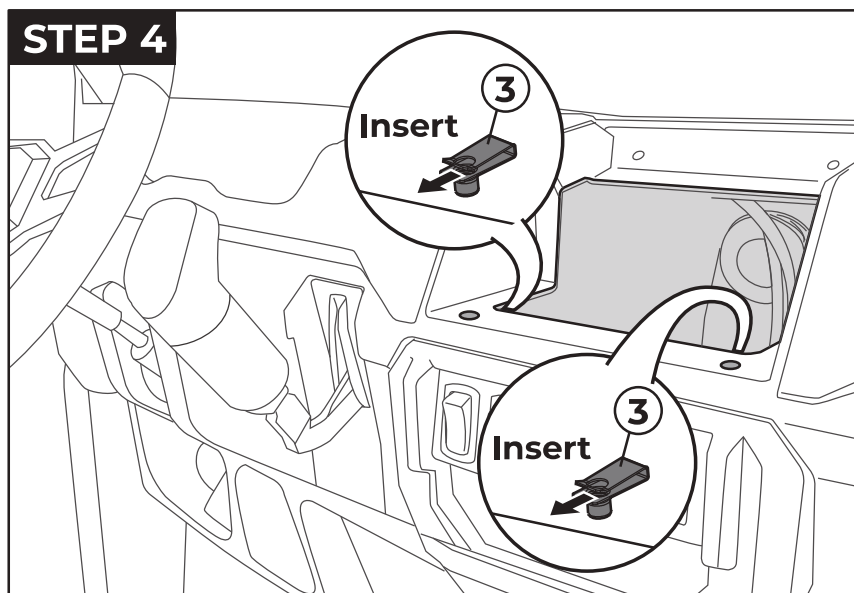
Remove original dashboard cover by removing two push pins [A].

### STEP 3



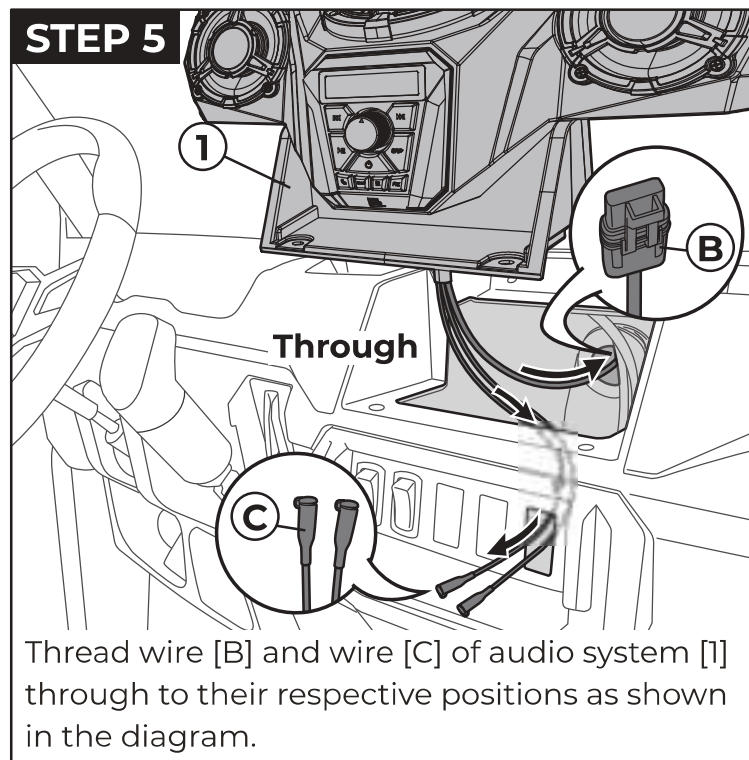
Select one of the decorative panels and pry it out.

### STEP 4

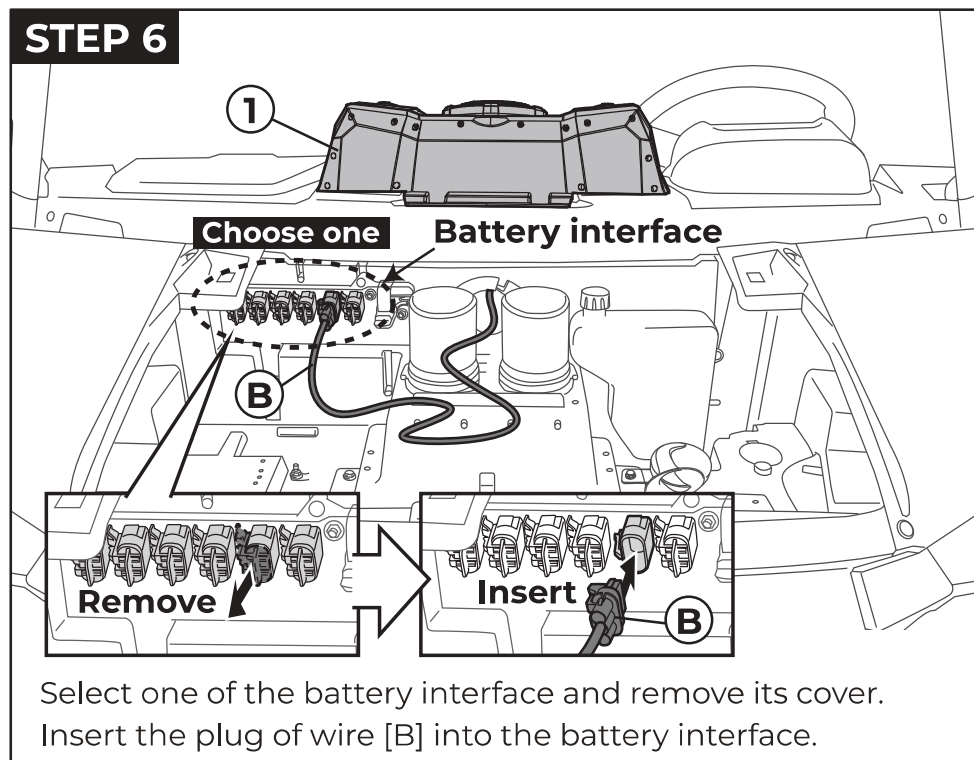


Align the nut clip [3] with the hole shown in the diagram, and snap it into the second layer of the metal plate beneath the hole.

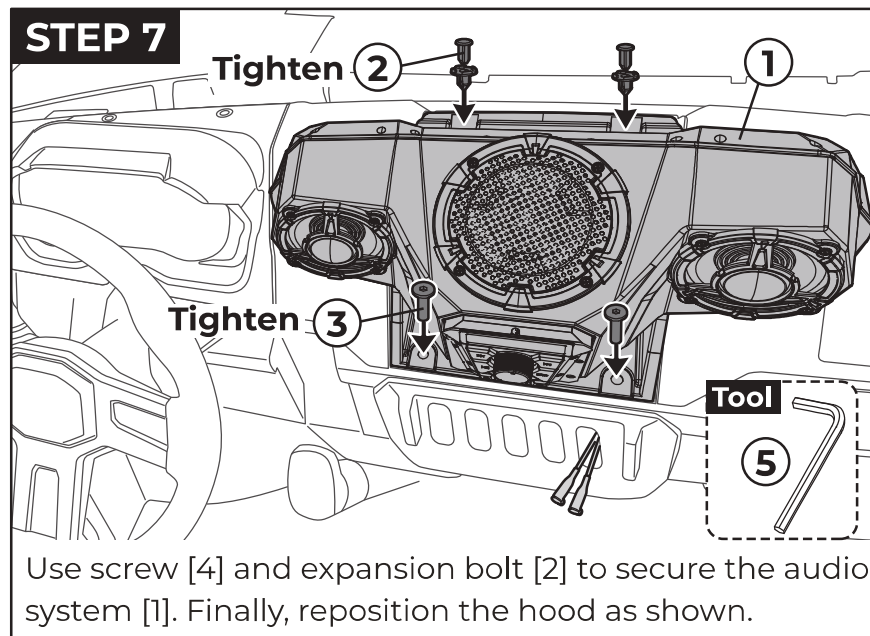
## STEP 5



## STEP 6



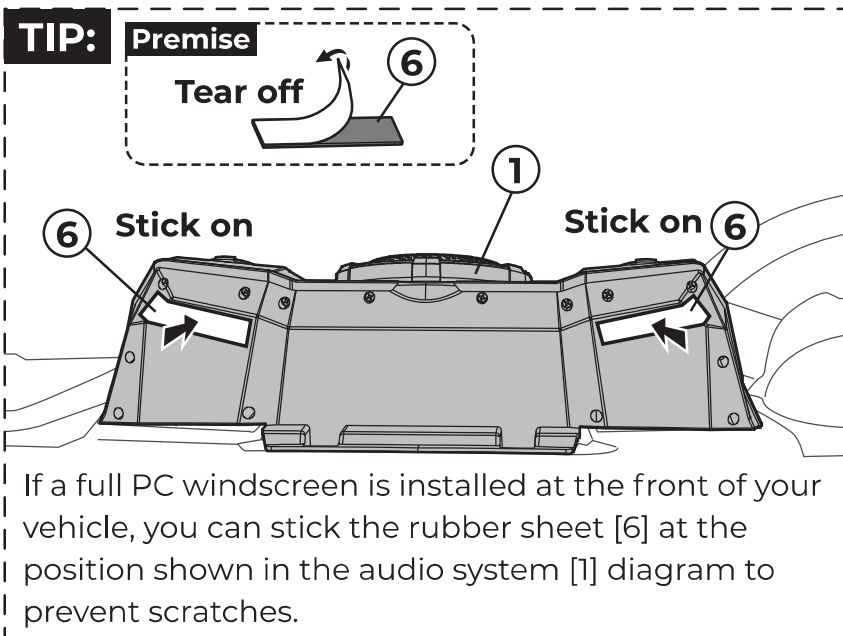
## STEP 7



## TIP:

Premise

Tear off



## PRODUCT OVERVIEW

### CONTROL PANEL

#### 1 Display panel

#### 2 ⏮ Previous music

1. In BT and USB mode, short press to switch to the previous music.
2. In FM mode, short press to switch to the last recorded radio station.

#### 3 Knob

##### Rotate/Short Press Then Rotate:

Rotate the knob to increase or decrease the volume.

##### Short press:

In FM mode, short press the knob switch, rotate the knob to fine-tune the FM channel, short press the knob switch again to save the fine-tuned channel, or if there is no knob switch rotation operation for five seconds, it will automatically save and exit.

#### 4 ⏸ Play/pause the music

##### Short press:

1. In BT and USB mode, a short press can play/pause the music;
2. In FM mode, it performs an automatic search for FM channels.

##### Long press:

In BT mode, a long press clears the paired Bluetooth connection history and disconnects the currently connected device.

#### 5 📞 Hands-free

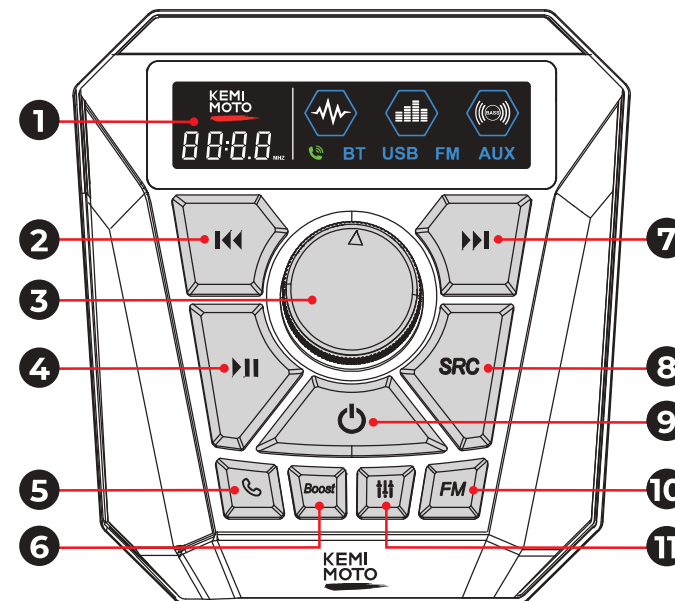
Short press to answer the call, and then short press to hang up the call.

#### 6 **Boost** Volume shortcut key

The volume switches between 80% and 20%.

#### 7 ⏭ Next music

1. In BT and USB mode, short press to switch to the next music.
2. In FM mode, short press to switch to the next recorded radio station.



#### 8 **SRC** Mode switch

Short press to cycles in BT/AUX/USB Mode.

#### 9 **Power** supply

Long press and hold to turn on/off the speaker.

#### 10 **FM** FM mode

##### Short press:

Short press to enter FM mode.

##### Long press:

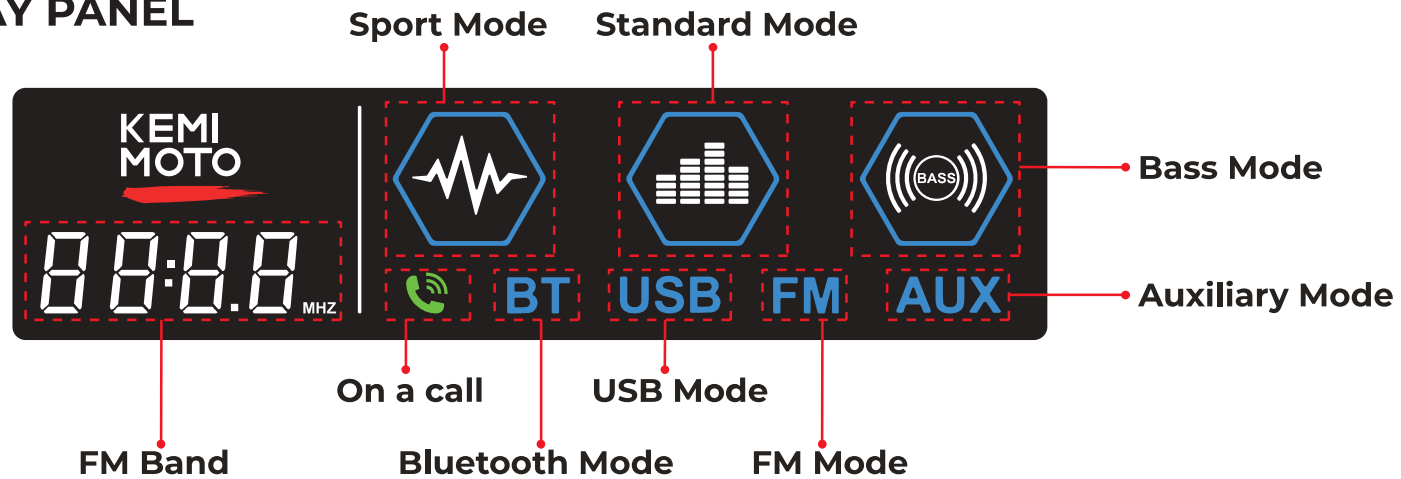
In FM mode, long press the button to delete the current channel and switch to the next FM channel.

#### 11 **EQ** sound effects

In BT, USB, and AUX modes, short press the sound effect button to cycle in sport/music/bass EQ mode



## 1 DISPLAY PANEL




## SPECIFICATIONS

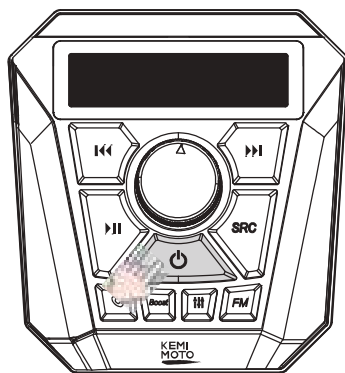
PARAMETER NAME	PARAMETER
Transducers	"2*4"" coaxial speakers 1*5.25"" woofer"
Output Power	120W RMS; 240W PEAK
THD at Rated RMS Power	<1%
Quiescent Current Draw	<0.5A
Maximum Current Draw	15A
Frequency response	45Hz-20KHz
Signal-to-noise Ratio	>80dB
Cable type	18AWG

PARAMETER NAME	PARAMETER
Cable length	2.62Feet (0.8m)
Bluetooth Version	V5.3
Bluetooth \profile	A2DP V1.3; AVRCP V1.6
Bluetooth transmitter frequency range	2402MHz-2480MHz
Bluetooth transmitter power	≤15dBm (EIRP)
Aux-in	1Vrms(0.3mV-1V) (3.5mm connector)
Aux-out	1Vrms(3.5mm connector)
USB Drive File System	FAT16, FAT32, exFAT
USB Drive Maximum	128GB
Microphone Type	Capacitive Microphone
Microphone Directional Characteristics	Omnidirectional
Microphone effective frequency range	50Hz-16KHz
Packaging demensions	/
Gross weight	/
Operation temperature	-20°C~60°C
FM frequency range	87.5MHz-108MHz
FM Step	100KHz
Maximum number of FM stations stored	50



## BLUETOOTH MUSIC

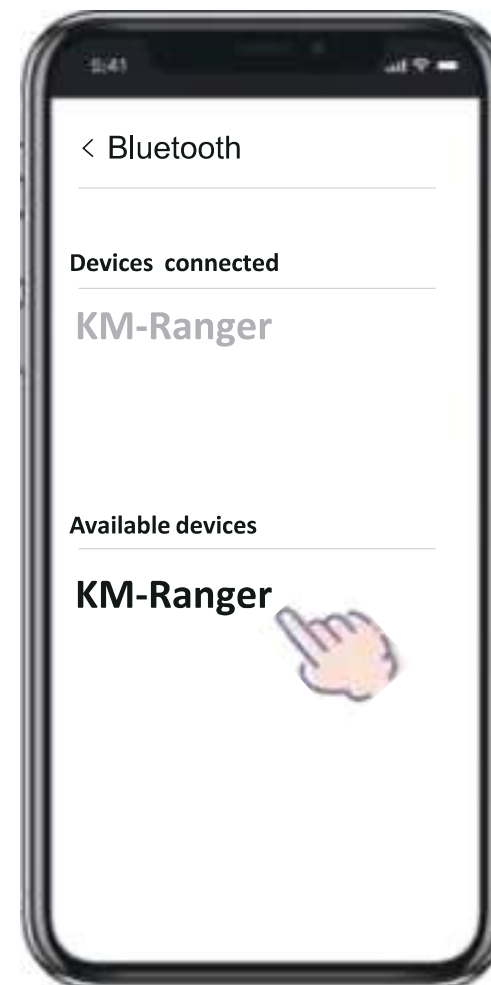
**STEP 1:**  Press and hold the power button on speaker to turn on the speaker you will hear the voice prompt “Hello Kemimoto” and that means Bluetooth is under standby waiting for connection.



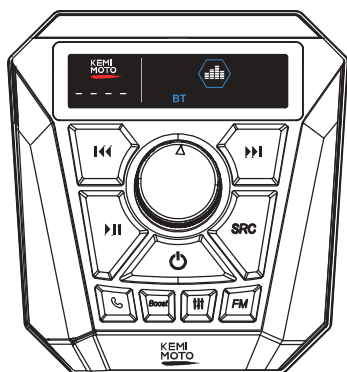
“Hello Kemimoto”  
“Bluetooth Mode”



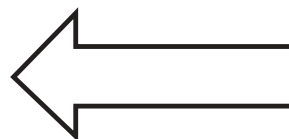
**STEP 2:** Scan for the devices named “KM-Ranger” in your smart phone Bluetooth list, click it to wait for connection.



**STEP 3:** Once the Bluetooth connected, the voice prompt “connected” will come out.

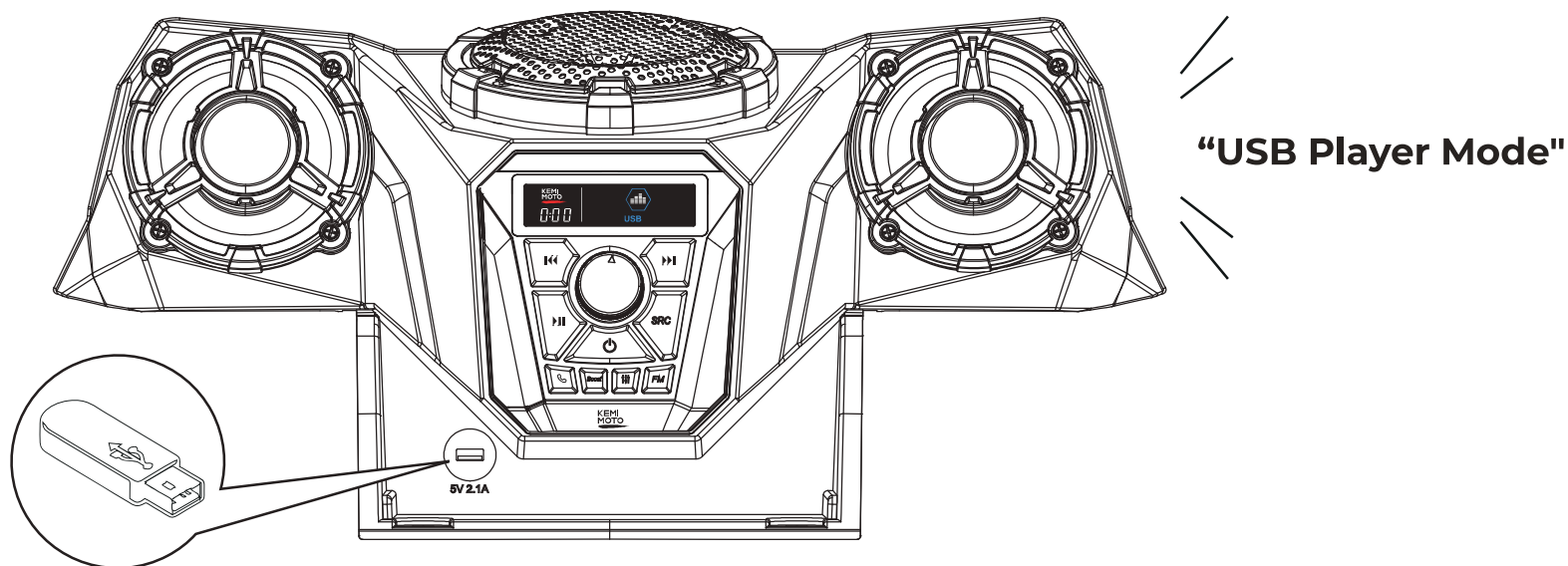


“Connected”



## USB MUSIC

Insert the USB thumb, with MP3/WMA format music stored, into the USB acceptance at back of connecting panel, The mode will automatically turn to USB mode, and start playing USB music after voice prompt "USB player mode".



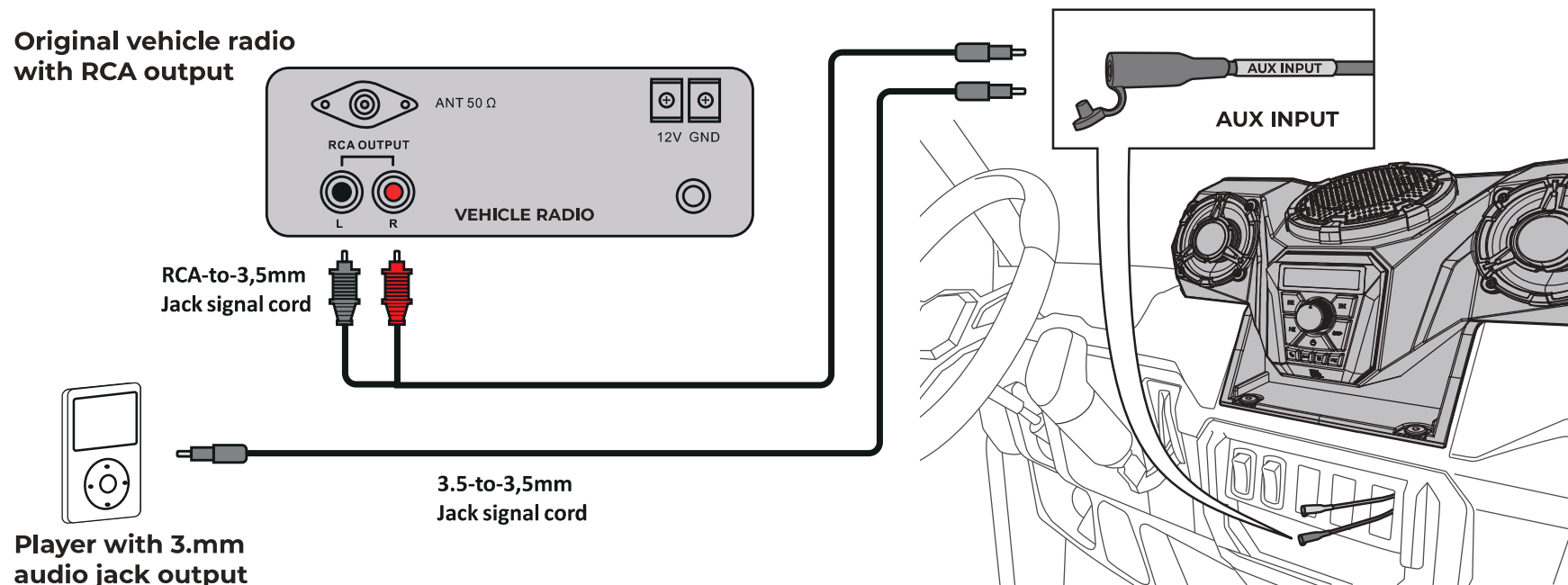
### NOTE:

1. The system support hot swap of USB thumb, you are allowed to plug out/in the USB during the working status.
2. Make sure there (is ) are at lease one piece of music file stored in the USB thumb, or the decode might not recognize the USB.
3. The system will kick into USB mode directly once the USB thumb is inserted and successfully recognized.
4. The USB port can provide 5V power to mobile phone or other appliance charging, with maximumly 2A output current.

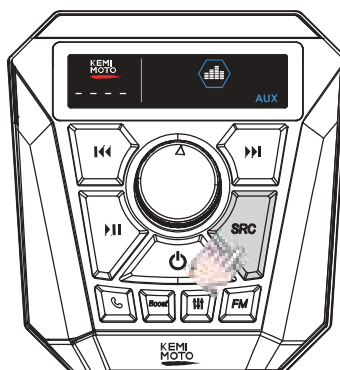
## AUX INPUT

**STEP 1:** If you want the soundbar speaker work with your existing vehicle radio or Mp3 player that have got no Bluetooth audio function, you may use the auxiliary input function.

**Original vehicle radio with RCA output**



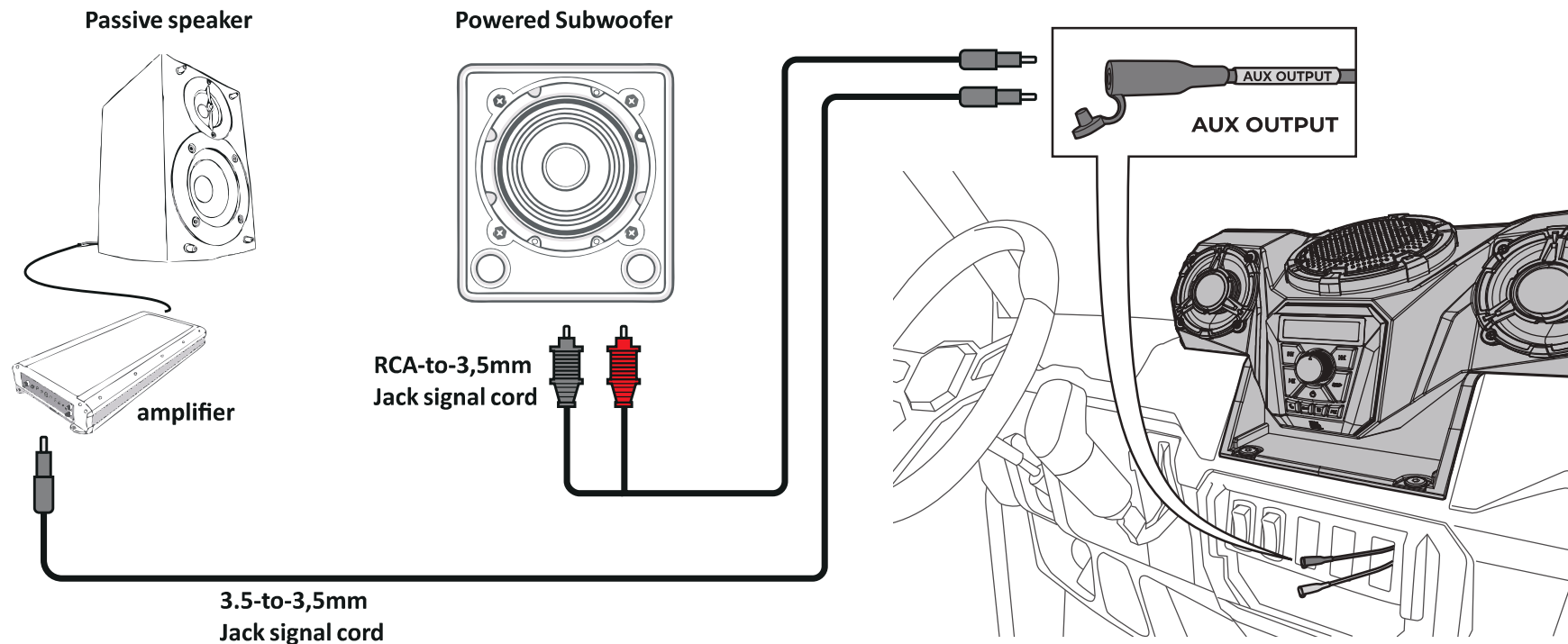
**STEP 2:** **SRC** Press the SRC button on speaker panel cycle select the speaker mode until you hear the voice prompt "Auxiliary Input Mode" that means the system is under Aux-in mode.



**"Auxiliary Input Mode"**

## AUX OUTPUT

If you want the soundbar speaker coordinately work with your existing subwoofer or other speaker system, you may use the auxiliary output function, Wire the audio signal into external speaker unit through RCA conversing cord or 3.5mm-to-3.5mm audio cord.



### NOTE:

- The auxiliary output port provide low level stereo audio signal.
- Gain of the output signal < 600mV.
- The output gain is controlled and synchronized with control panel volume buttons.

## FCC STATEMENT

This device complies with Part 15 of the FCC Rules. Operation is subject to the following two conditions:

- (1) This device may not cause harmful interference, and
- (2) This device must accept any interference received, including interference that may cause undesired operation.

**Warning:** Changes or modifications not expressly approved by the party responsible for compliance could void the user's authority to operate the equipment.

NOTE: This equipment has been tested and found to comply with the limits for a Class B digital device, pursuant to Part 15 of the FCC Rules. These limits are designed to provide reasonable protection against harmful interference in a residential installation.

This equipment generates uses and can radiate radio frequency energy and, if not installed and used in accordance with the instructions, may cause harmful interference to radio communications. However, there is no guarantee that interference will not occur in a particular installation. If this equipment does cause harmful interference to radio or television reception, which can be determined by turning the equipment off and on, the user is encouraged to try to correct the interference by one or more of the following measures:

- Reorient or relocate the receiving antenna.

- Increase the separation between the equipment and receiver.

- Connect the equipment into an outlet on a circuit different from that to which the receiver is connected.

- Consult the dealer or an experienced radio/TV technician for help.

## FCC RADIATION EXPOSURE STATEMENT

This equipment complies with FCC radiation exposure limits set forth for an uncontrolled environment. This equipment should be installed and operated with minimum distance 20cm between the radiator & your body.

- English: "

This device complies with Innovation, Science and Economic Development Canada licence-exempt RSS standard(s). Operation is subject to the following two conditions:

- (1) this device may not cause interference, and
- (2) this device must accept any interference, including interference that may cause undesired operation of the device."

- French:"

Cet appareil est conforme aux normes RSS exemptées de licence d'innovation, sciences et développement économique Canada. Le fonctionnement est soumis aux deux conditions suivantes:

- (1) l'appareil nedoit pas produire de brouillage, et
- (2) l'utilisateur de l'appareil doit accepter tout brouillage radioélectrique subi, même si le brouillage est susceptible d'en compromettre le fonctionnement."

#### ISED Radiation Exposure Statement

This equipment complies with ISED radiation exposure limits set forth for an uncontrolled environment. This equipment should be installed and operated with minimum distance 20cm between the radiator & your body

#### Déclaration d'exposition au rayonnement ISED

Cet équipement est conforme aux limites d'exposition au rayonnement de la ISED établies pour un non contrôlé Environnement. Cet équipement devrait être installé et utilisé avec une distance minimale 20cm entre le radiateur et votre corps.

## CUSTOMER SUPPORT



Contact us by email: [service@kemimoto.com](mailto:service@kemimoto.com)

Help center:







# KEMI MOTO



FCC ID: 2BGR4-B011703015BK

Designed and engineered by Kemimoto in  
California,U.S.A , assembled in China



Complete journey of dreams