

# EVC50 Pro Model – Internal Images

## Scope:

This file must contain sharp, clear photographs of the inside of the system and each radio module. Both the solder and component sides of all the circuit boards must be photographed. If there is localized shielding on the circuit board, there should be photos with and without the shielding. The images must be clear enough to see the location designators. This will allow us to reconcile the schematics with the photos; all the exhibits must match. The interior photos of the assembly should have text boxes and arrows identify the radio(s), antenna cables and antennas.

For family model approvals for ISED Canada, internal photos of each model variant are required.

## Base Board – PN 337055

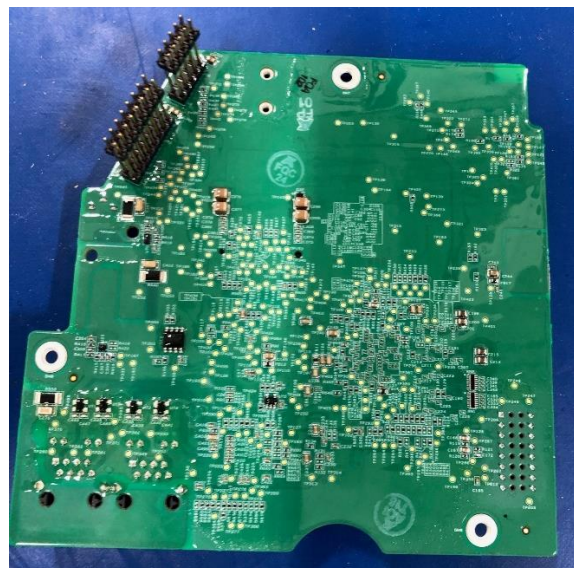
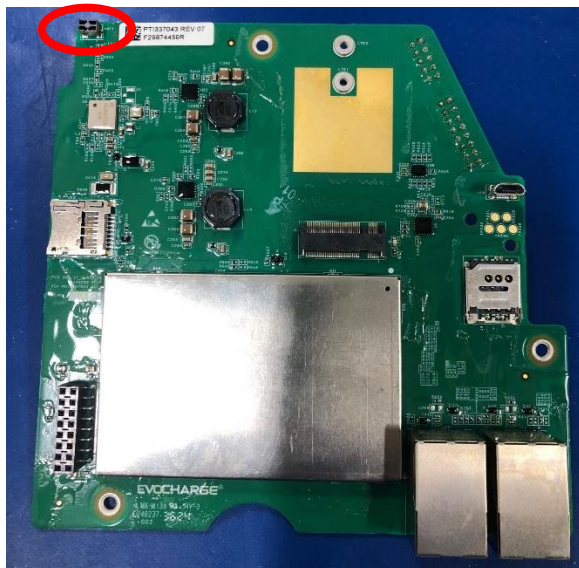
No antennas on this board design

## LED Board – PN 337045

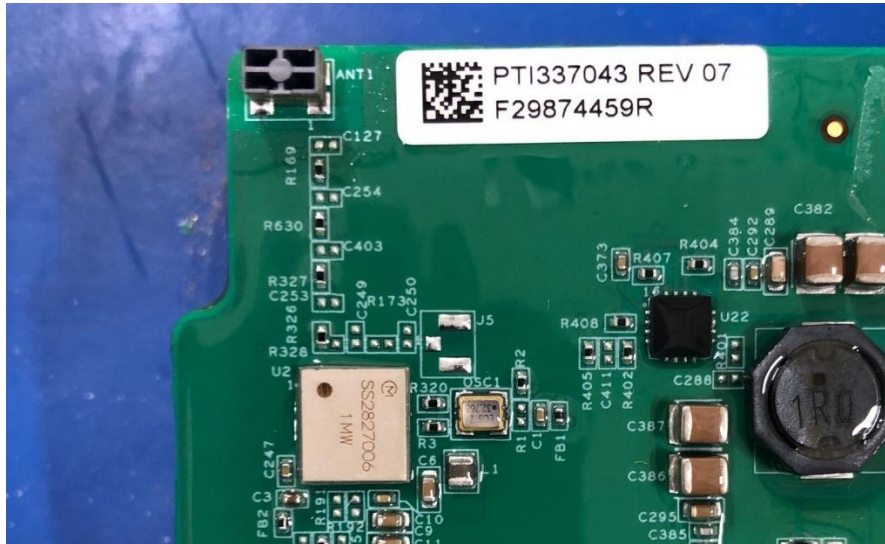
No antennas on this board design

## Communication Board – PN 337043

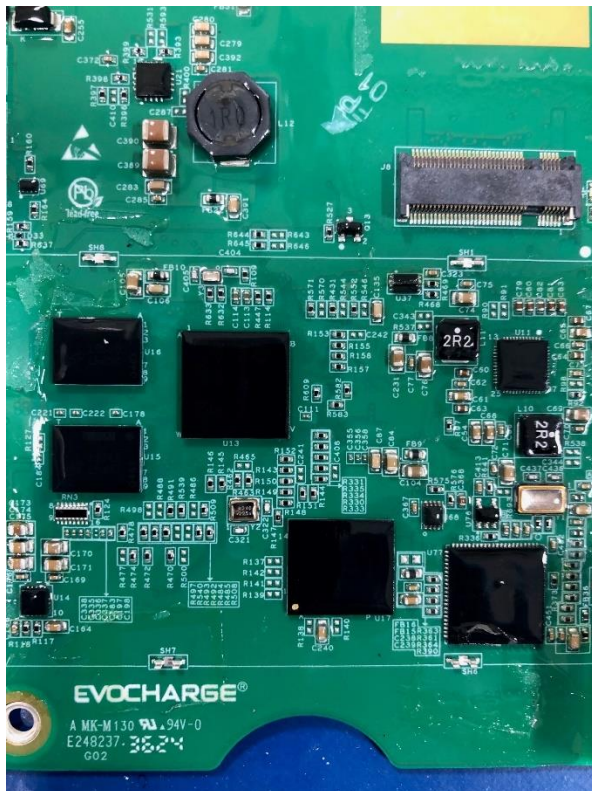
Top side and bottom side of PCBA. Red circle indicates antenna for WiFi/BLE use.



Antenna close-up image

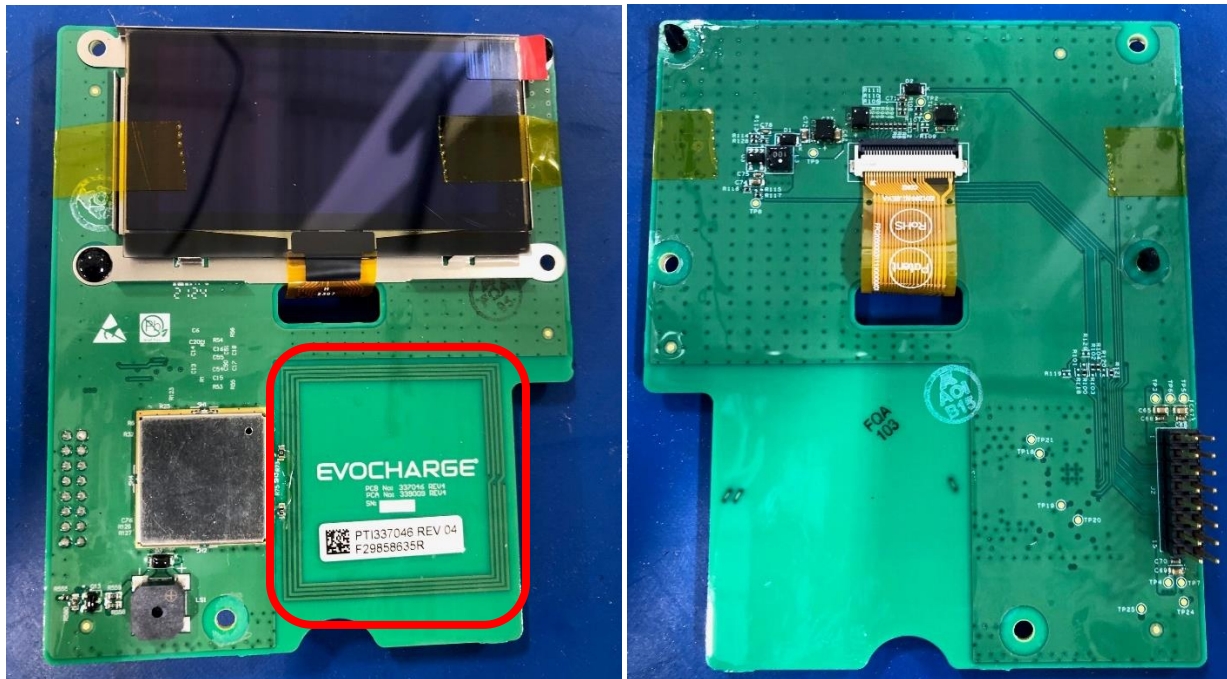


Top side image with Shield removed



## Display Board – PN 337046

Top side image with RFID antenna highlighted using red box.



Top side image with Shield removed.

