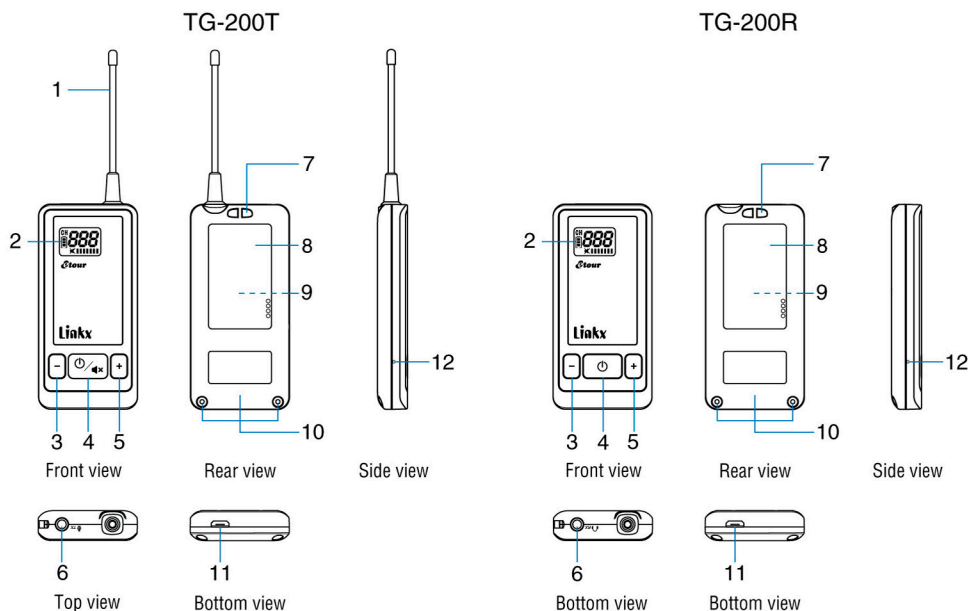
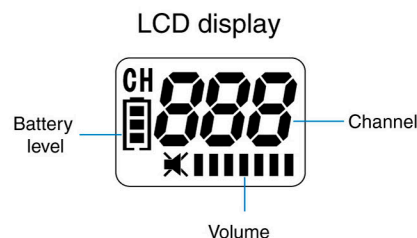


## Diagram and Instructions



1. Antenna (for Transmitter TG-200T only)
2. LCD display
3. Down button for channel and volume adjustment
4. On / Off / Mute / Set button — Transmitter  
additional function for TG-200T: ✖ to mute the audio signal  
On / Off / Set button — Receiver
5. Up button for channel and volume adjustment
6. Microphone Headset / Aux input for Transmitter TG-200T  
Earphone output for Receiver TG-200R
7. Lanyard connection point
8. Label area
9. Battery compartment and built-in Li-polymer battery
10. Lid of battery compartment and screws
11. Micro-USB charging port
12. Reset button



## LCD Display Illustration

	TG-200T Transmitter	TG-200R Receiver		TG-200T Transmitter	TG-200R Receiver
	Channel change			100% battery remaining	
	Mute/Mic disconnect	Mute		70% battery remaining	
	Microphone volume level 4	Earphone volume level 4		30% battery remaining	
	—	No signal received		10% battery remaining	

## Operating Instructions

### Microphone and Earphone Connection

- Connect the microphone to the 3.5mm socket on the transmitter and the earphones to the 3.5mm socket on the receiver. Make sure the connectors are properly inserted in place.

### Power On and Off

- Press and hold the power button / for 2 seconds to turn on the system. The LCD display will illuminate and retrieve the channel number used last time to indicate Power on successfully.
- Press and hold the power button / for 2 seconds. The LCD display will disappear to indicate Power off completely.

Note :

- Energy saving- Receiver will automatically power off if no signal is received after about **20min**.

### How to select a channel

- The channel is preset to **CH 001**. If you wish to select a different channel, press and buttons simultaneously for 2 seconds. The sign starts flashing. Press or button to select your desired channel. Press / button briefly to confirm the selected channel or wait for approximately 5 seconds to automatically store the selected channel.

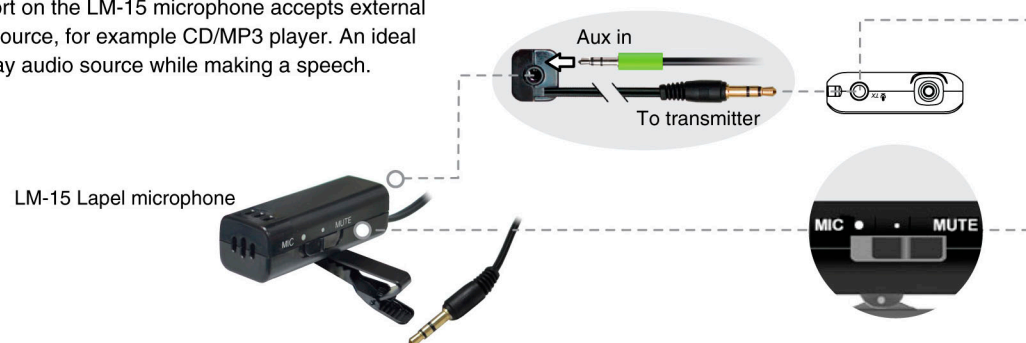
Note :

- Make sure that the transmitter and receiver(s) operate on the same channel. The receiver display will keep flashing when no transmission signal is being received.
- System will retrieve the channel number used previously.
- Channel SYNC – Receiver(s) which operates on same channel of the transmitter will be synced wirelessly when the channel on the transmitter has been changed as synchronization feature.

## How to adjust the Volume

### Transmitter: Using LM-15 Lapel microphone

- The Aux input port on the LM-15 microphone accepts external line-level audio source, for example CD/MP3 player. An ideal tool for you to play audio source while making a speech.



- Connect LM-15 microphone to the 3.5mm socket on the transmitter
- Transmitter volume is preset at level 4
- Press or to decrease or increase the volume level. There are 4 adjustable levels from to
- Press mute button briefly to mute the transmitter, press the same button once again to recover.
- Microphone sensitivity and mute switch — LM-15 features a microphone-mute switch; Switch to “mute” when you like to play the aux input source alone or to have private conversation.

### Transmitter: Using microphone other than LM-15

- Connect microphone to the 3.5mm socket on the transmitter
- Transmitter volume is preset at level 4
- Press or to decrease or increase the volume level. There are 4 adjustable levels from to
- Press mute button briefly to mute the transmitter, press the same button once again to recover.

### Receiver:

- Receiver volume is preset at level 4
- Press or to decrease or increase the volume level. There are 8 adjustable levels from to
- The LCD display indicates no volume and in mute mode.

## Reset your tour guide device

The button is positioned and recessed on the side of the tour guide device.

Use a pencil or similar sharp object. Gently press and hold the "Reset" button for 1 second, then release the button. Turn on the device again to confirm that the configuration has been restored to the previous settings.

## Battery Autonomy and Charging

- When battery icon is displayed at fully autonomy , the battery contains sufficient power.
- When the battery icon is displayed as empty and flashing , this indicates low battery and only 10% battery remaining. Recharge the battery immediately via USB certified traveling charger (optional accessories) or appropriated Linkx charger station. It will take approx. 6 hours to reach full charge and provide approx. 17 hours of continuous operation for receiver and 13 hours of continuous operation for transmitter.
- While charging, the battery icon displays on LCD back and forth.

Note :

- The transmitter or receiver will shut down automatically when charging is taking place. If you want to use the system while it's charging, simply press the power button again to turn the system back on.

## Q & A

Q1 “” Sign is displayed on Transmitter

Ans Check if the transmitter volume is muted or the microphone connection is not properly attached.

Q2 The content on the LCD display of my receiver is flashing

Ans This indicates that no transmission signal is being received. Make sure your transmitter is powered on. Both transmitter and receiver are operated on the same channel and same frequency.

To ensure proper signal being received, set transmitter and receiver at least 30 cm apart. System being placed too close will cause the transmitted signal arrived at the receiver saturated instantly, system will then collapse and receiver will muted.