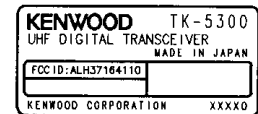
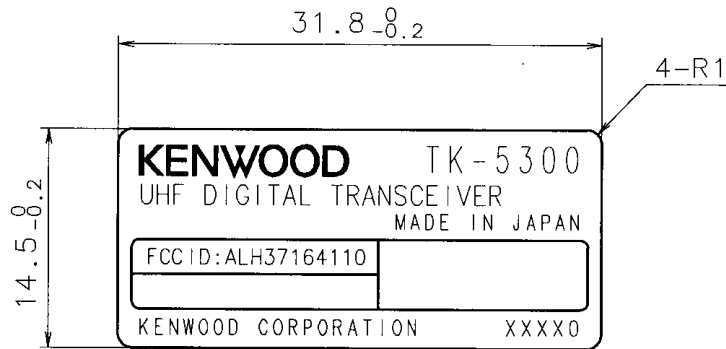


Model:TK-5300
FCC ID:ALH37164110



1	2	3	4
TOLERANCE (C)	MMV	SYMBOL	REVISION NO. CODE ISSUED DATE
~ 6 ±0.15	-	△ x -	- - 200 - -
6 ~ 30 ±0.20			
30 ~ 80 ±0.30			
80 ~250 ±0.40			
250~500 ±0.55			



(1:1)

NOTES:

FOR DETAILS ON PRINTING, REFER TO THE FILM.
COLORS SHALL BE AS FOLLOWS:
LETTERS AND LINES: BLACK BACKGROUND: SILVER

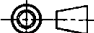
PRESURE-SENSITIVE ADHESIVE MUST NOT CAUSE DISCOLORATION.

MUST BE PRINTED WITH FILM.

FILM TO BE SUPPLIED BY KENWOOD.

PER SHEET: 10PCS

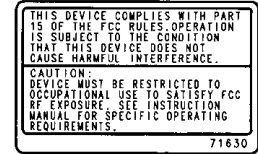
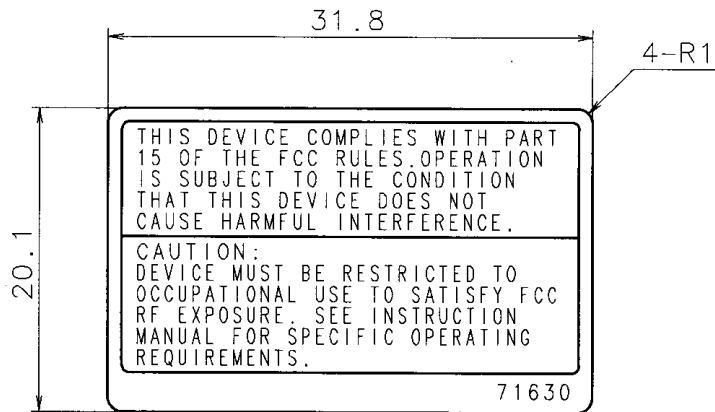
SEE APPROVED SAMPLE FOR OTHER DETAILS.

-	-	-	-	AL EVAPORATION PLATE t0.1 FROSTED SILVER	SEAL PRINTING, STRONG TACKIFIER, LAMINATE(FROSTING)	Y50-XXXX-10	-
NO.	PART NUMBER	NOTE	MATERIAL	FINISH	MODEL	QTY.	
SCALE	2 : 1	DESIGNED	CHECKED	APPROVED	PART NAME	-	
UNIT	: mm					-	
						-	
	DATE	2005-****		DRAWING NUMBER	MMV -	-	
				PART NO.	SHEET NO.	REL.	
JIS Z8310-84	KENWOOD	Kenwood Corporation		B72-XXXX-04	1 / 1	00	
						Y	

DRWN. DATE 2005-11-09

#

1	2	3	4
TOLERANCE (C)	MMV	REVISION NO.	ISSUED
~ 6 ±0.15	-	52607	R.OTSUKA
6 ~ 30 ±0.20		NEW ADDITION	2004-03-11
30 ~ 80 ±0.30			
80 ~250 ±0.40			
250~500 ±0.55			



(1:1)

NOTES:

FOR DETAILS ON PRINTING,REFER TO THE FILM.
COLORS SHALL BE AS FOLLOWS:
LETTERS AND LINES:BLACK BACKGROUND:SILVER

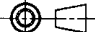
PRESURE-SENSITIVE ADHESIVE MUST NOT CAUSE DISCOLORATION.

MUST BE PRINTED WITH FILM.

FILM TO BE SUPPLIED BY KENWOOD.

PER SHEET:10PCS

SEE APPROVED SAMPLE FOR OTHER DETAILS.

-	-	-	-	AL EVAPORATION PLATE to 0.1 FROSTED SILVER	SEAL PRINTING, STRONG TACKIFIER, LAMINATE(FROSTING)	Y50-5870-10	-				
NO.	PART NUMBER	NOTE		MATERIAL	FINISH	MODEL	QTY.				
SCALE 2:1		DESIGNED	CHECKED	APPROVED	PART NAME STANDARD LABEL			-			
UNIT : mm								-			
		DATE	2004-03-11	DRAWING NUMBER				MMV -	SHEET NO.	REL.	
JIS Z8310-84		KENWOOD		Kenwood Corporation		PART NO. B42-7163-04			1/1	00	S

DRWN. DATE 2004-03-11

#