

Quick Start Guide

Smart Wi-Fi Outlet Extender
WiFi智慧擴充插座


Images may differ from actual product.
©2023 TP-Link 7106510051 REV1.0.0

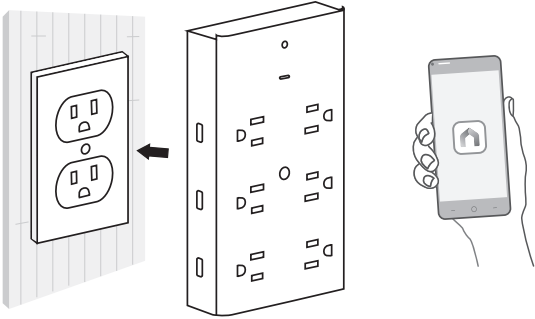
1 Download Tapo App

Get the **Tapo app** from the App Store or Google Play.



2 Power Up & Set Up

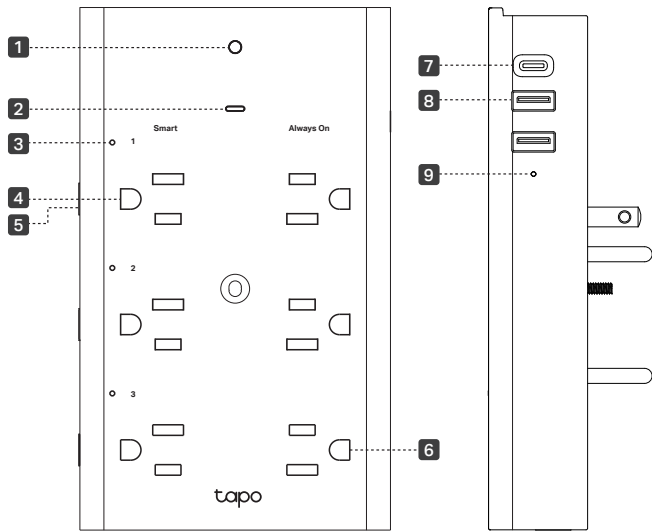
Plug in your outlet extender. Tap the  button in the app and select your model. Follow the app instructions to complete setup.



3 Integrate Third-Party Services

To control your smart plug by voice, go to **Me > Third-Party Services** in the Tapo app and integrate Alexa, Google Assistant and other third-party services.

Appearance




- 1 Ambient Light Sensor**
Allows you to set conditions for turning on/off the integrated night light on the Tapo app.
- 2 System LED**
- 3 Smart Outlet LED (1-3)**
- 4 Smart Outlets (Left 1-3)**
Each outlet can be independently controlled from your phone.
- 5 Buttons (1-3)**
- 6 Common Outlets (Right 1-3)**
- 7 USB Type-C Port**
- 8 USB-A Ports**
- 9 USB LED**

System LED Status

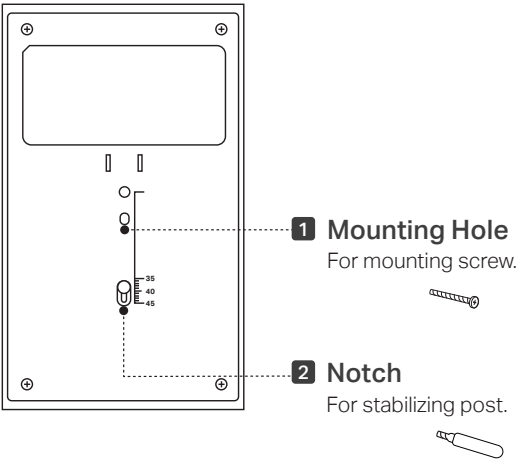
LED Status	Event
Solid white	Starting up; Connected to Cloud.
Blinking white and orange slowly	Ready for setup; Reset Wi-Fi.
Solid orange	Connected to Wi-Fi.
Blinking orange slowly	Disconnected from Wi-Fi.
Blinking white slowly	Firmware updating.
Blinking white and orange quickly	Restore to factory default settings.

Button Explanations

Buttons (1-3) 	<p>Press one of them once to turn on/off the corresponding outlet.</p> <p>Press and hold one of them for 5s to reset Wi-Fi while keeping other settings.</p> <p>Press and hold for 10s one of them to restore to factory default settings.</p>
--	---

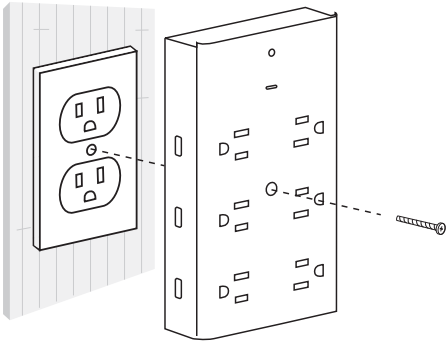
More Stable Installation

You can install the outlet extender onto a duplex outlet by using the provided screw and/or the stabilizing post for reinforcement.



Option 1: Via Mounting Screw

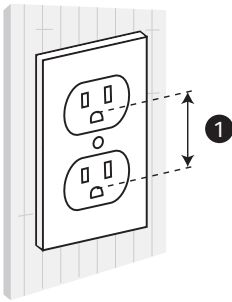
- 1 Plug your Tapo device into a duplex outlet.
- 2 Insert the provided screw into the mounting hole and tighten the screw to secure the outlet extender.



An all-pole mains switch in accordance with IEC 62368-1 Annex L shall be incorporated in the electrical installation of the building. And the contact separation of the switch shall not less than 1.5 mm.

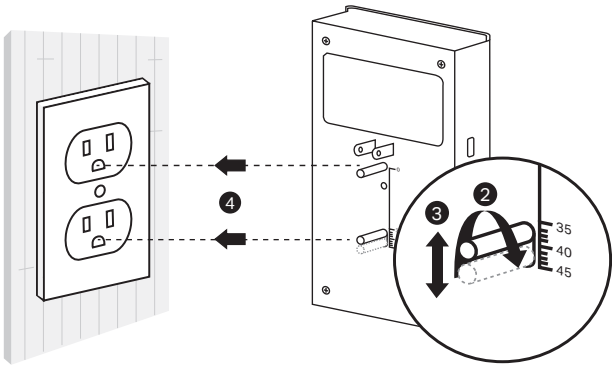
Option 2: Via Stabilizing Post

- 1 Measure the distance between the two outlets of the duplex outlet.



CAUTION: Risk of electric shock. Do not insert your measurement tool into the outlets.

- 2 Insert the stabilizing post into the notch of your outlet extender. Rotate clockwise until it is semi-tightened.
- 3 Slide the post to the measured distance so that the post can plug into the other outlet. Rotate clockwise to tighten the post.
- 4 Plug your outlet extender into the duplex outlet.



Note: The removable stabilizing post makes the device fit any type of wall socket, such as a duplex outlet, decorator outlet, USB receptacle, or GFCI outlet.

Safety Notice

- Do not ingest the stabilizing post.
- Plug the product into the wall outlets with earthing connection through the plug.
- Do not use the stabilizing post as a common tool.
- Risk of Electric Shock. Do not allow to be used as a toy. Close attention is necessary when used by or near children to reduce the risk of ingestion of the removed stabilizing post.
- If the stabilizing post is not installed into the outlet extender or removed from the outlet extender, do not place it in reach of children.

CAUTION

- Contains Always On Receptacles. To Reduce the Risk of Electric Shock – Disconnect the equipment from this device before servicing.
- To reduce the risk of fire or electric shock, do not use this device with a receptacle in which the slot openings do not align with the blades.
- To reduce the risk of fire or electric shock, use this device to outlets with a pitch of 38.8 mm ~ 43.8 mm.

Specifications

Input: 125V~ 60Hz 15A 1875W MAX
Output:
Receptacle Outlet: 15A MAX
USB Single Port: 5V \equiv 3A / 9V \equiv 2A / 12V \equiv 1.5A
USB Multiple Ports: 5V \equiv 3A (Total)

?

Need some help?

Visit <https://www.tapo.com/support/>
for technical support, user guides,
FAQs, warranty & more



FCC compliance information statement

This equipment has been tested and found to comply with the limits for a Class B digital device, pursuant to part 15 of the FCC Rules. These limits are designed to provide reasonable protection against harmful interference in a residential installation. This equipment generates, uses and can radiate radio frequency energy and, if not installed and used in accordance with the instructions, may cause harmful interference to radio communications. However, there is no guarantee that interference will not occur in a particular installation. If this equipment does cause harmful interference to radio or television reception, which can be determined by turning the equipment off and on, the user is encouraged to try to correct the interference by one or more of the following measures:

- Reorient or relocate the receiving antenna.
- Increase the separation between the equipment and receiver.
- Connect the equipment into an outlet on a circuit different from that to which the receiver is connected.
- Consult the dealer or an experienced radio/ TV technician for help.

This device complies with part 15 of the FCC Rules. Operation is subject to the following two conditions:

- 1)This device may not cause harmful interference.
- 2)This device must accept any interference received, including interference that may cause undesired operation.

Any changes or modifications not expressly approved by the party responsible for compliance could void the user's authority to operate the equipment.

Note: The manufacturer is not responsible for any radio or TV interference caused by unauthorized modifications to this equipment. Such modifications could void the user's authority to operate the equipment.

FCC RF Radiation Exposure Statement:

This equipment complies with FCC RF radiation exposure limits set forth for an uncontrolled environment. This device and its antenna must not be co-located or operating in conjunction with any other antenna or transmitter.

"To comply with FCC RF exposure compliance requirements, this grant is applicable to only Mobile Configurations. The antennas used for this transmitter must be installed to provide a separation distance of at least 20 cm from all persons and must not be co-located or operating in conjunction with any other antenna or transmitter."

NCC Notice

注意！

取得審驗證明之低功率射頻器材，非經核准，公司、商號或使用者均不得擅自變更頻率、加大功率或變更原設計之特性及功能。

低功率射頻器材之使用不得影響飛航安全及干擾合法通信；經發現有干擾現象時，應立即停用，並改善至無干擾時方得繼續使用。

前述合法通信，指依電信管理法規定作業之無線電通信。

低功率射頻器材須忍受合法通信或工業、科學及醫療用電波輻射性電機設備之干擾。