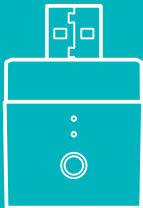




## DIY Micro

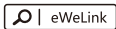
User manual V1.0



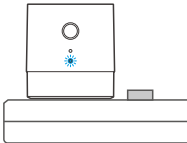
USB Smart Adapter

# Operating Instruction

## 1 Download the APP



## 2 Power on

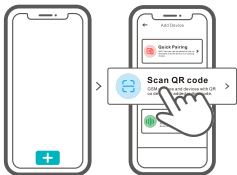


After powering on, the device will enter the quick pairing mode (Touch) during the first use. The Wi-Fi LED indicator flashes quickly.



The device will exit the quick pairing mode (Touch), if not paired within 3mins. If you want to enter this mode, please long press the manual switch for about 5s until the Wi-Fi LED indicator flashes quickly and release.

### 3 Add the device

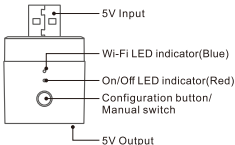


Tap “+” and scan QR code on the card to add the device according to the app prompt.

## Specifications

Model	Micro
Input	5V $\overline{=}$
Output	5V $\overline{=}$ 2.5A
Operating systems	(Android 4.1 & iOS 9.0) or higher
Wi-Fi	IEEE 802.11 b/g/n 2.4GHz
Material	PC
Dimension	31x26.5x33mm

## Product Introduction



## Features

Turn on/off the devices from anywhere, schedule power on/off and share devices with your family to control.



Remote Control



Single/Countdown  
Timing



Voice Control



Share Control



Smart Scene



Camera Feature



Sync Status



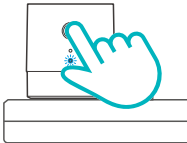
Power on State



LAN Control

## Factory Reset

Long press the configuration button for about 5s until the Wi-Fi LED indicator flashes quickly and release, then the reset is successful. The device enters quick pairing mode (Touch).



- ⓘ Please reset the device to factory defaults if you want to use other Wi-Fi networks, then reconnect the network.



Scan the QR code to read the voice control instruction for Amazon Echo and Google Home.

## **FCC Warning**

Changes or modifications not expressly approved by the party responsible for compliance could void the user's authority to operate the equipment.

This device complies with part 15 of the FCC Rules. Operation is subject to the following two conditions: (1) This device may not cause harmful interference, and (2) this device must accept any interference received, including interference that may cause undesired operation

### **FCC Radiation Exposure Statement:**

This equipment complies with FCC radiation exposure limits set forth for an uncontrolled environment. This transmitter must not be co-located or operating in conjunction with any other antenna or transmitter.

### **Note.**

This equipment has been tested and found to comply with the limits for a Class B digital device, pursuant to part 15 of the FCC Rules. These limits are designed to provide reasonable protection against harmful interference in a residential



installation. This equipment generates, uses and can radiate radio frequency energy and, if not installed and used in accordance with the instructions, may cause harmful interference to radio communications. However, there is no guarantee that interference will not occur in a particular installation. If this equipment does cause harmful interference to radio or television reception, which can be determined by turning the equipment off and on, the user is encouraged to try to correct the interference by one or more of the following measures:

- Reorient or relocate the receiving antenna.
- Increase the separation between the equipment and receiver.
- Connect the equipment into an outlet on a circuit different from that to which the receiver is connected.
- Consult the dealer or an experienced radio/TV technician for help.



To avoid electric shocks, be sure to disconnect the power supply cord when installing the product.

## Common Problems

Q: Why my device stays "Offline"?

A: The newly added device needs 1 – 2mins to connect Wi-Fi and network. If it stays offline for a long time, please judge these problems by the blue Wi-Fi indicator status:

1. The blue Wi-Fi indicator quickly flashes once per second, which means that the switch failed to connect your Wi-Fi:
  - ① Maybe you have entered a wrong Wi-Fi password.
  - ② Maybe there's too much distance between the switch your router or the environment causes interference, consider getting close to the router. If failed, please add it again.
  - ③ The 5G Wi-Fi network is not supported and only supports the 2.4GHz wireless network.
  - ④ Maybe the MAC address filtering is open. Please turn it off.

**If none of the above methods solved the problem, you can open the mobile data network on your phone to create a Wi-Fi hotspot, then add the device again.**

2. Blue indicator quickly flashes twice per second, which means your device has connected to Wi-Fi but failed to connect to the server.

Ensure a steady enough network. If double flash occurs frequently, which means you access an unsteady network, not the product problem. If the network is normal, try to turn off the power to restart the switch.



Shenzhen Sonoff Technologies Co., Ltd.  
Room 1001, 10F, Building 8, Lianhua  
Industrial Park, Longyuan Road, Longhua  
District, Shenzhen, GD, China

<https://sonoff.tech>

MADE IN CHINA

