

Internal Photos

The RF Host circuit board is a 4-layer board with ground and power on the inner layers and most all components mounted on the top. See Figures 6, 7, and 8 for images.

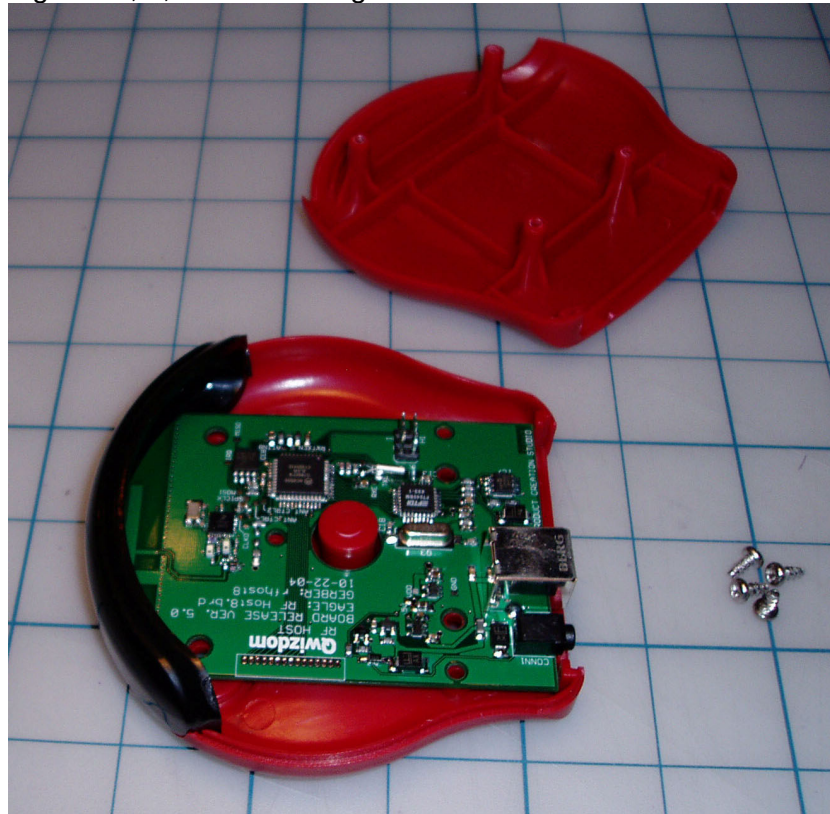


Fig 6 – RF Host circuit board in housing.

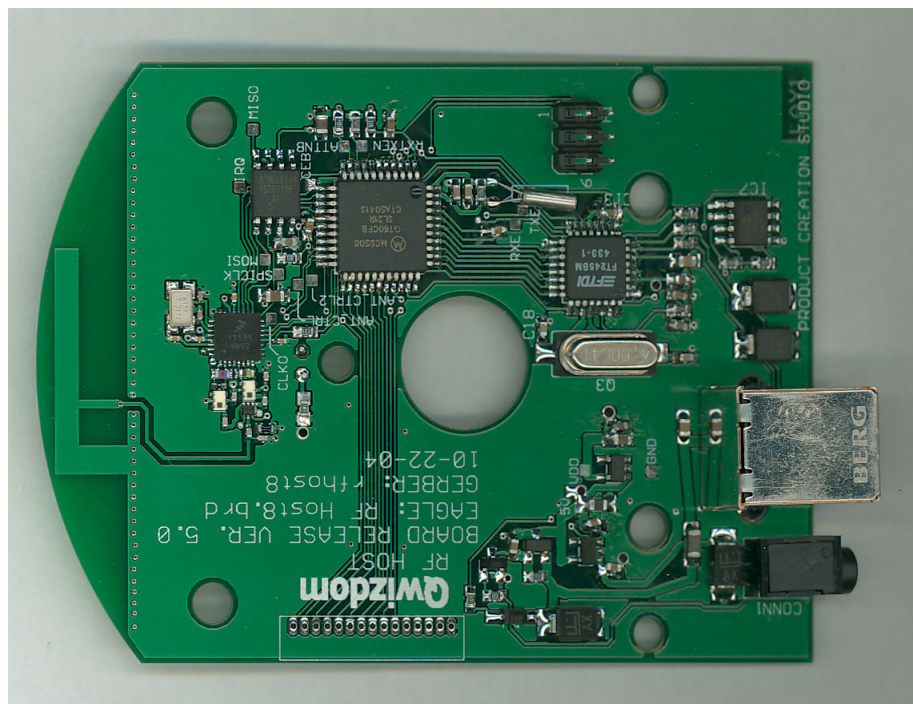


Fig 7 – Top side of RF Host circuit board

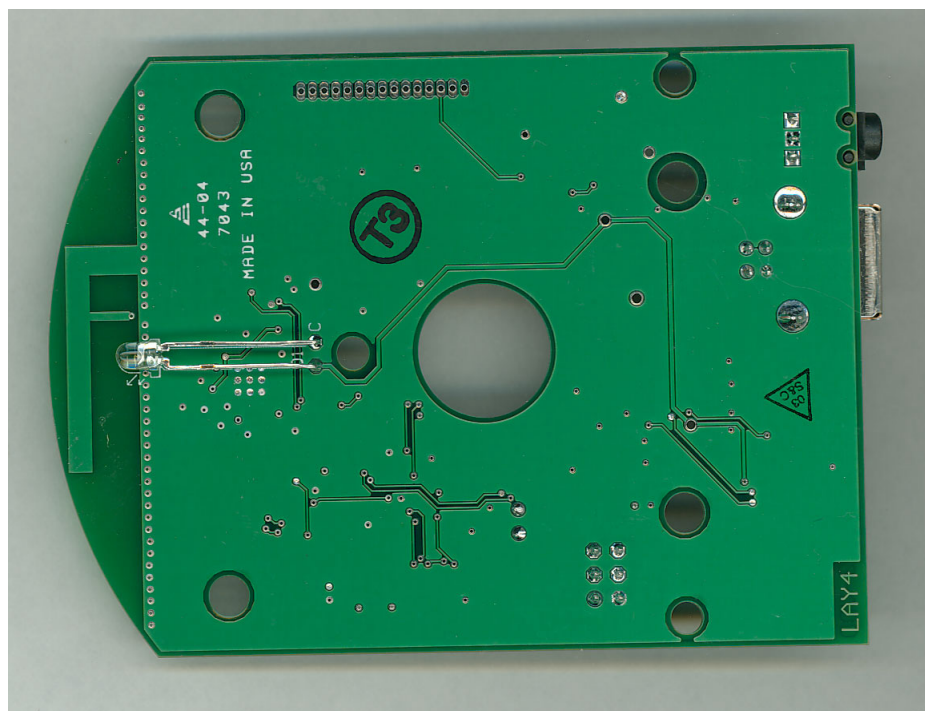


Fig 8 – Bottom Side of RF Host circuit board.