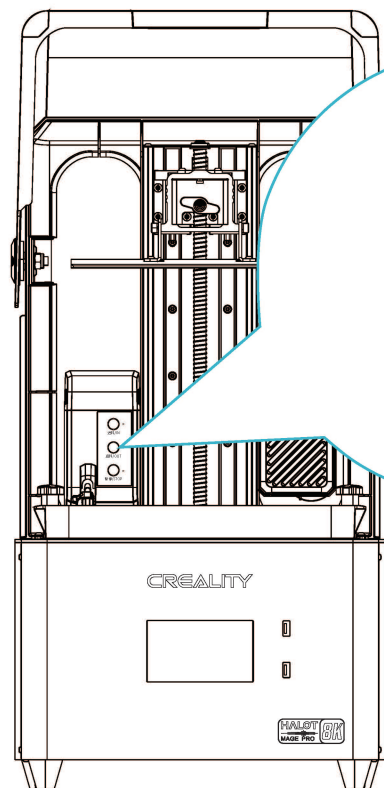




The current interface is for reference only. Due to the continuous upgrading of functions, it shall be subject to the latest software/firmware UI published on the official website.



Interface Definition:

- 【进料/IN】: click to suck in the resin, and then stop when the resin level rises to the sensing height; click again to stop it;
- 【退料/OUT】: click to perform resin extraction, and click again to stop.
- 【暂停/STOP】: click to stop the module functioning;

Instructions for the LEDs:

1. The LED is always ON to indicate that the functionality is being performed;
2. LED3 is always ON to indicate that the module is not working;
3. Three flashing LEDs indicate that it is in [Auto Mode].

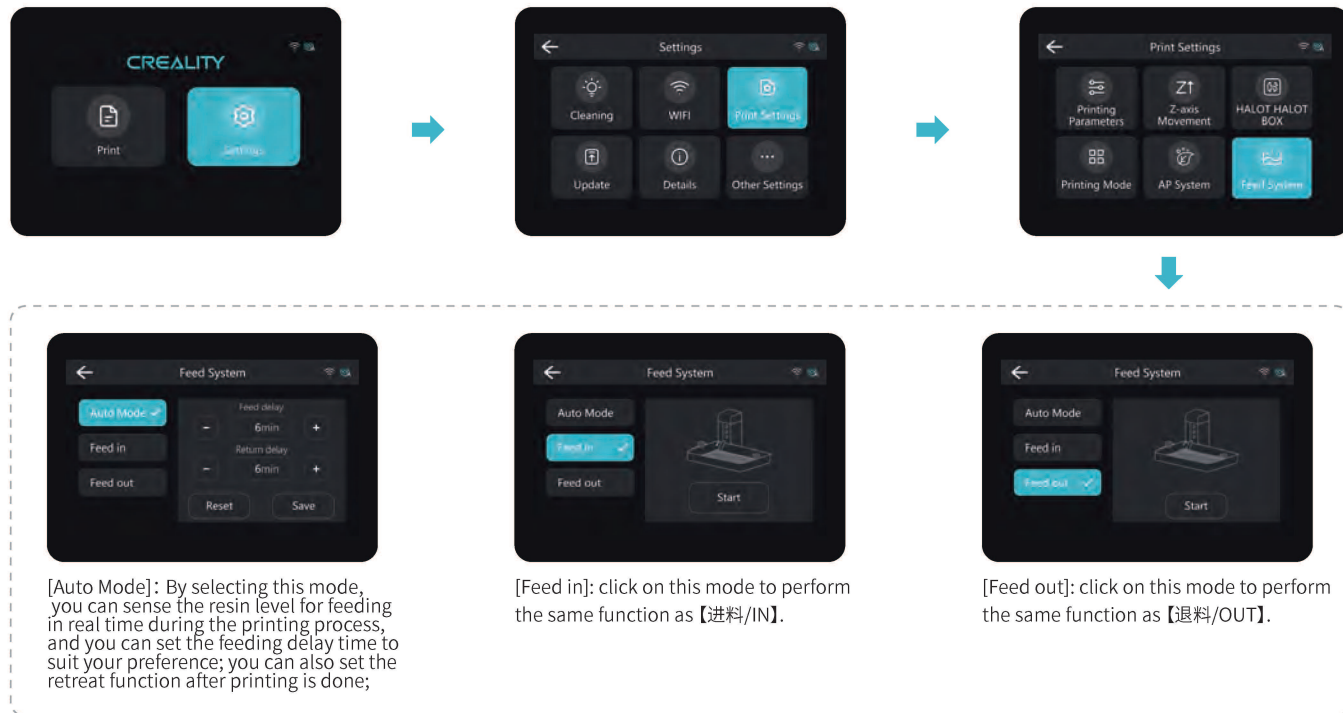


Note:

- ① Before opening [Auto Mode], please make sure that the resin bottle and tank levels are normal.
- ② If there is no response when clicking [退料/OUT], you must click the button again to stop.

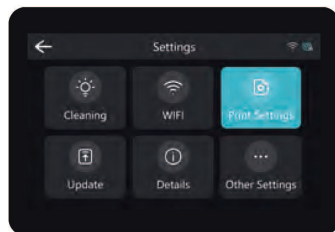
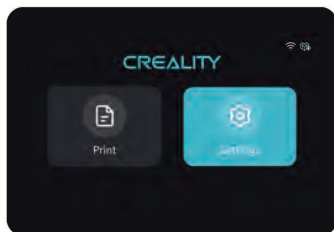
7. Guidance on the use of the feed system/module

Instructions for use: Intelligent control is possible by clicking on the Halot OS function module.

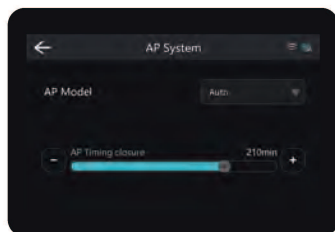


The current interface is for reference only. Due to the continuous upgrading of functions, it shall be subject to the latest software/firmware UI published on the official website.

8. Guidance on the use of the purification system/module



The current interface is for reference only. Due to the continuous upgrading of functions, it shall be subject to the latest software/firmware UI published on the official website.

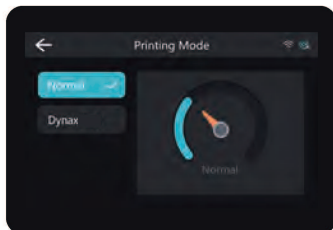
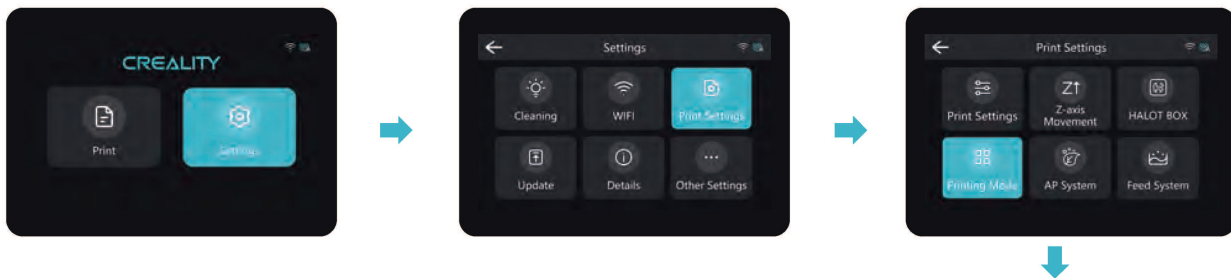


Click to SWITCH mode, and the timed purification in [Auto] mode is based on the working state of the device, according to the set time;



The working status of the purification module is controlled by switching in the [Manual] mode.

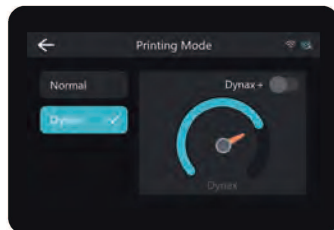
9. Guidance on the use of Dynax mode (high-speed mode)



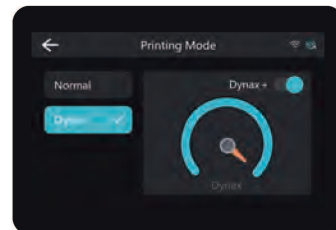
[Normal] Description: This mode limits the printing speed of the device and some parameter settings;

Description of Dynax Mode:

1. [Buffer Layer] Parameter description: to limit the speed of the device within this setting and to prevent resin splashing;
2. When the mode is not unlocked, the slice file is executed only in the maximum value of the normal mode using the high-speed parameter;
3. The [Normal Mode] is the default for new devices and device resets.
4. [Dynax+] Mode: When this mode is turned on, the printing speed will be pushed to the maximum. But the surface of the printed model may not be as delicate as in other modes.



[Dynax] Description: In this mode, the upper limit of the device's printing speed is increased and some parameter settings are unlocked.



Note: There are some requirements for Dynax mode to be operated by the user. Please contact the official customer service if you have any questions during use.



The current interface is for reference only. Due to the continuous upgrading of functions, it shall be subject to the latest software/firmware UI published on the official website.