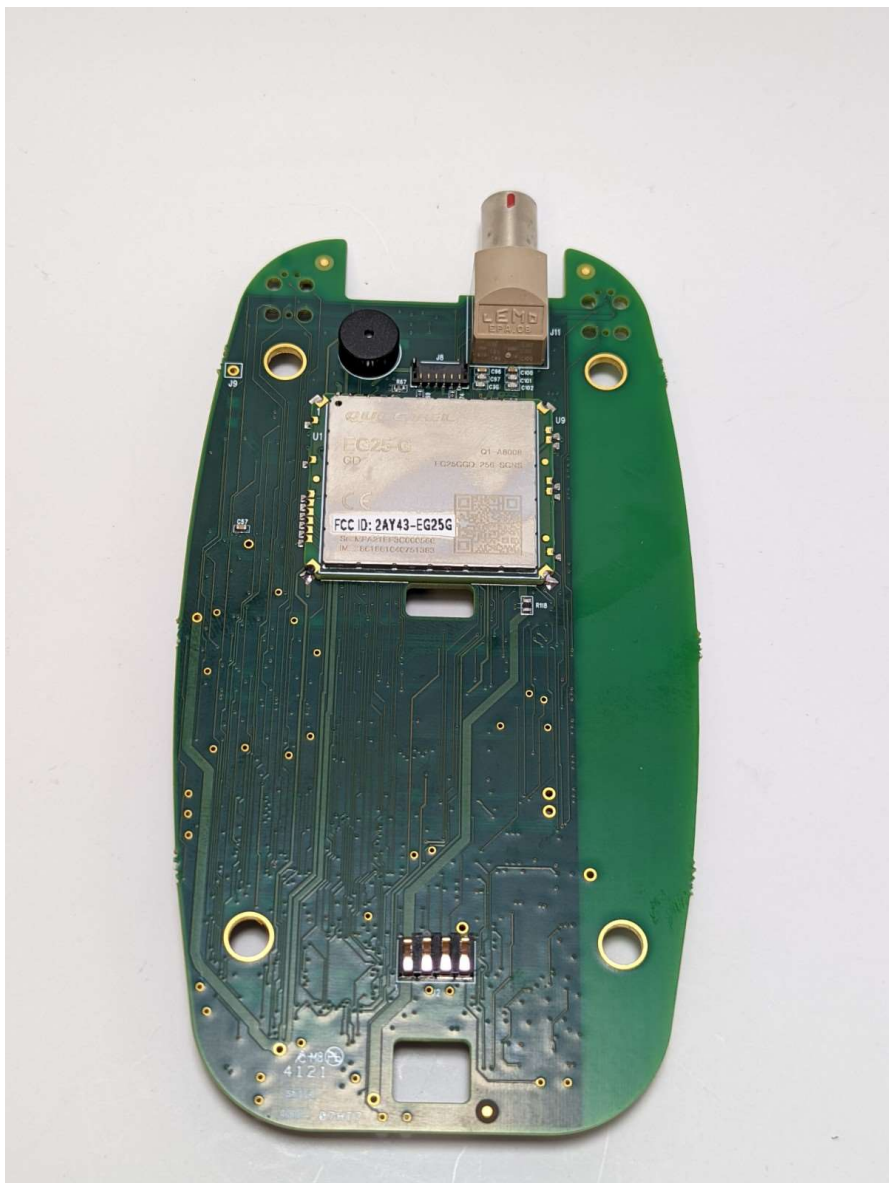




Internal Picture 1: Guardio Charging main box top of PCB



Internal Picture 2: Main box bottom PCB layout. LTE module is EG25-G

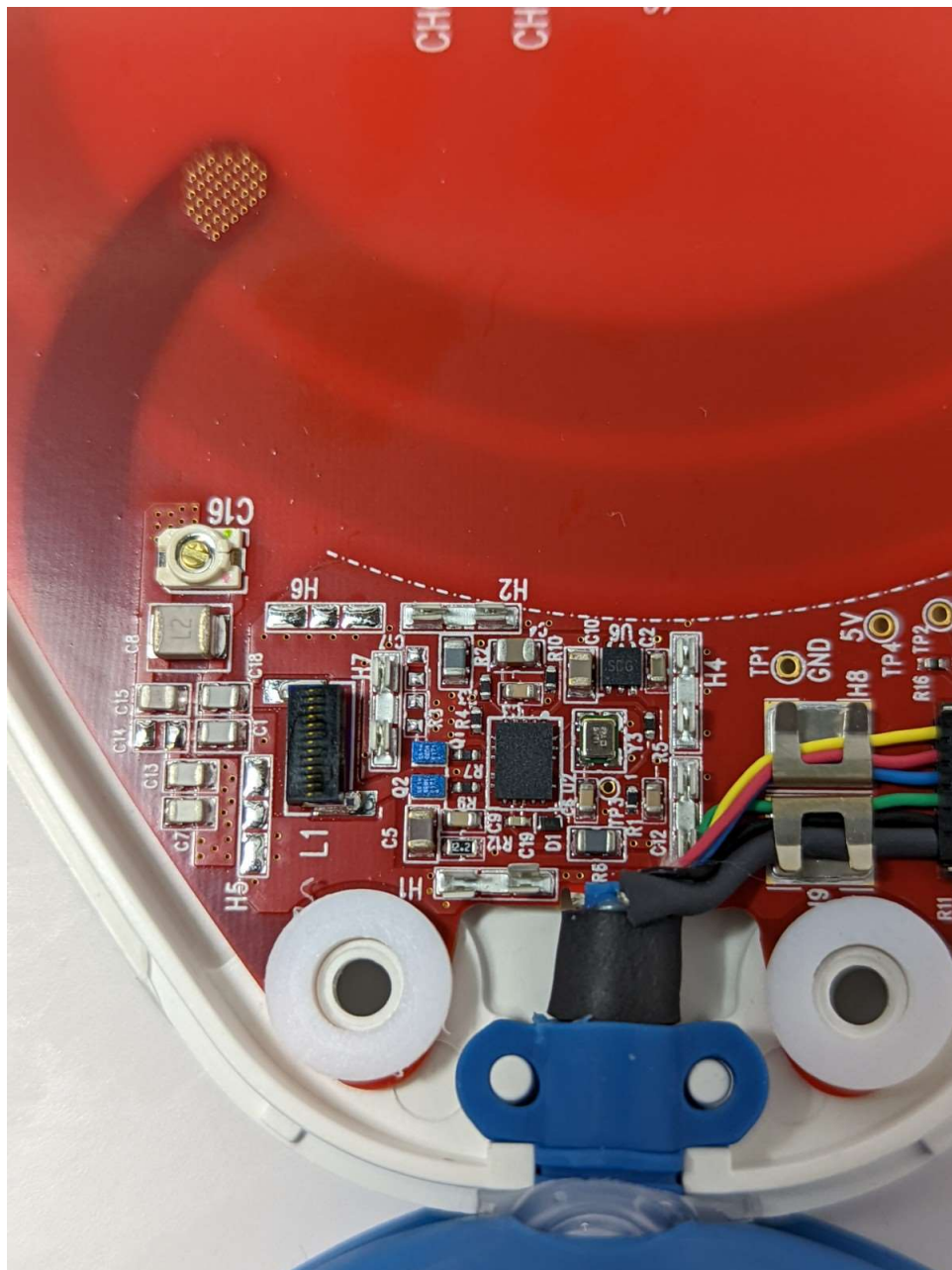


Internal Picture 3: Antennas present on the main board. 403MHz MICs antenna is Linx Technologies ANT-403-SP (left). LTE antenna is YC0003AA from Quectel Wireless (right). LTE module is utilized by LTE modem on the bottom of the PCB which is a certified module under FCC ID: 2AY43-EG25G.

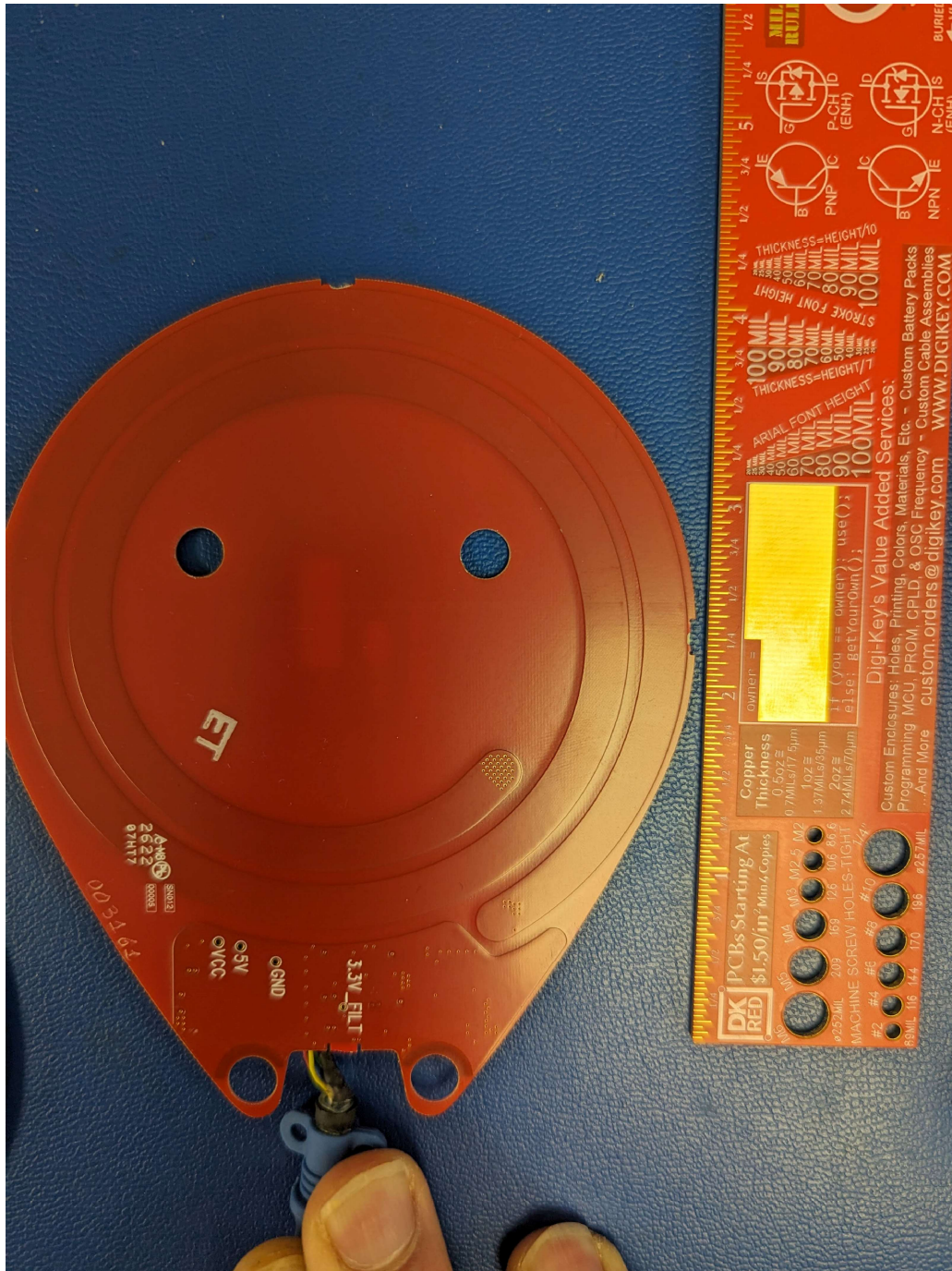


Internal Picture 4: Top PCB layout for charging coil board.





Internal Picture 5: Shielded circuitry on PCB top. Shielded circuitry is primarily a class-D amplifier



Internal Picture 6: Bottom PCB layout for charging coil board. A 2-turn PCB trace antenna encompasses the majority of the bottom layout and is used for the 13.56MHz wireless power transfer coil.