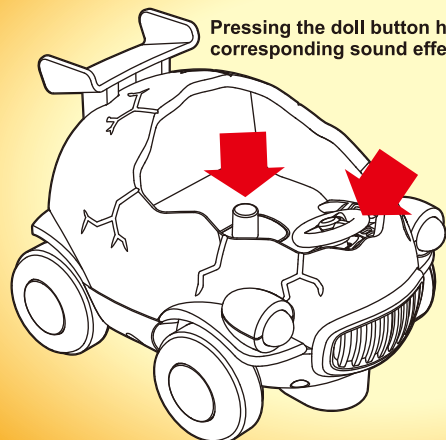
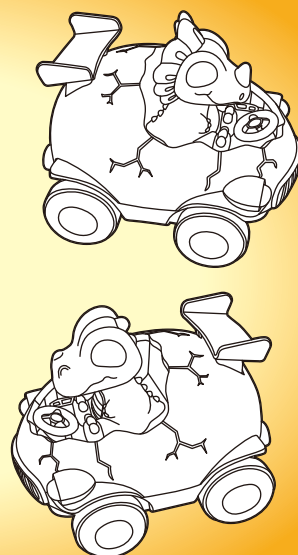


The Radio-controlled car has a startup sound effect when powered on.



Pressing the steering wheel button will sound the horn activate.



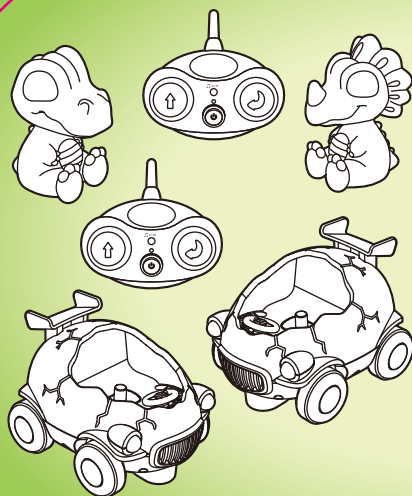
# DINO Chasers

## 2 Remote control car set

### INSTRUCTIONS



## Product Includes

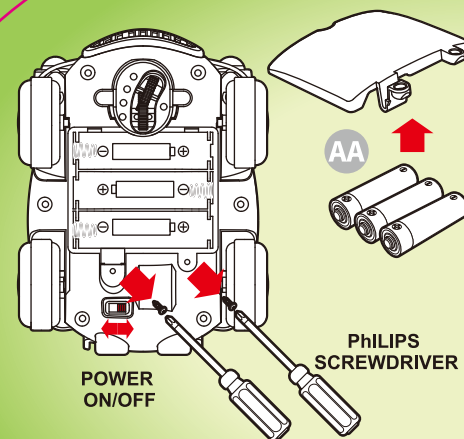
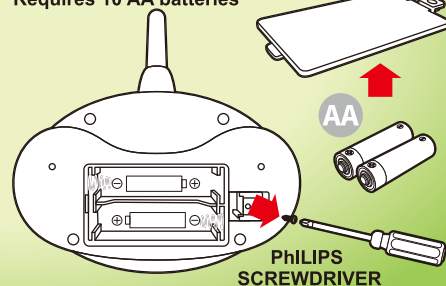


## Features

Frequency: 2.4G  
Function: Forward, backward, left rear turn two-way remote control  
Product: Enters sleep mode after 5 minutes of inactivity. Activate with any button  
Remote control distance: about 35 meters  
Battery of Radio-controlled car: 1.5V AA LR06 X 3  
Remote control battery: 1.5V AA LR06 X 2  
Usage time: 3 hours

## Battery Installation

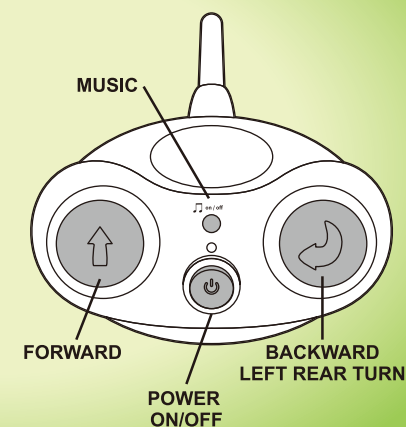
Requires 10 AA batteries



Turn on the pull switch on the car bottom to the ON position (open), and the OFF position is (closed);

## Operating the Car

Music buttons  
First trigger (steering wheel sound effect)  
Second trigger (doll button)  
Third trigger (turn off music)



This device complies with part 15 of the FCC Rules. Operation is subject to the following two conditions: (1) This device may not cause harmful interference, and (2) this device must accept any interference received, including interference that may cause undesired operation.

Any Changes or modifications not expressly approved by the party responsible for compliance could void the user's authority to operate the equipment.

**Note:** This equipment has been tested and found to comply with the limits for a Class B digital device, pursuant to part 15 of the FCC Rules. These limits are designed to provide reasonable protection against harmful interference in a residential installation. This equipment generates uses and can radiate radio frequency energy and, if not installed and used in accordance with the instructions, may cause harmful interference to radio communications. However, there is no guarantee that interference will not occur in a particular installation. If this equipment does cause harmful interference to radio or television reception, which can be determined by turning the equipment off and on, the user is encouraged to try to correct the interference by one or more of the following measures:

- Reorient or relocate the receiving antenna.
- Increase the separation between the equipment and receiver.
- Connect the equipment into an outlet on a circuit different from that to which the receiver is connected.
- Consult the dealer or an experienced radio/TV technician for help.

#### FCC Radiation Exposure statement

The device has been evaluatec to meel general RF exposure requirement. The device can be used in porlable exposure condition without restriction.