



*Actual product may differ from illustration.

CHIERE ONE SERIES

Smart Multi-Cooker

Instruction Manual
Mode D'emploi

YOU SELECT THE DISH,
THE **COOKER**
DOES THE
REST





*YOU SELECT THE DISH,
THE COOKER DOES THE REST*



@tinecoglobal



CONTENTS

Important Safety Instructions.....	2
Specifications	6
Overview.....	7
Accessories.....	8
Assembly	9
Operation	13
Maintenance	15
Troubleshooting.....	17
Warranty	17

IMPORTANT SAFETY INSTRUCTIONS

Thank you for choosing Tineco Smart Multi-Cooker.

Safety is an essential part of every Tineco product. However, the product safety of Tineco can only be ensured if this chapter and the warning notices in the following chapters are followed.



READ ALL INSTRUCTIONS BEFORE USING (THIS APPLIANCE).

When using electrical appliances, basic safety precautions should always be followed including the following:

1. To protect against risk of electrical shock do not put the plug, power supply cord, or the main body in water or other liquid.
2. The appliance should not be used by children or persons with impaired or reduced physical, sensory or mental capabilities, or any person with a lack of experience or knowledge in using potentially dangerous cooking appliances, unless they are instructed or supervised in the use of the appliance by a person responsible for their safety. Children must be closely supervised when the appliance is being used by or near them. Children should be supervised to ensure that they do not play with the appliance.
3. Make sure appliance is disconnected from its electricity source when not in use, before putting on or taking off parts, and before cleaning. To disconnect the appliance from its power source unplug it from the wall outlet. Never pull from the power cord. Avoid contacting moving parts. Do not attempt to defeat any safety interlock mechanisms.
4. Do not operate any appliance with a damaged cord or plug or after the appliance malfunctions, or is dropped or damaged in any manner. Contact the manufacturer at their customer service for information on examination, repair, or adjustment. Return appliance to the nearest authorized service facility for examination, repair, or adjustment.
5. The use of accessories not recommended or sold by manufacturer may cause a risk of injury to persons.
6. Keep hands and utensils out of container while blending to reduce the risk of severe injury to persons or damage to the appliances.
7. Do not let cord hang over edge of table or counter, or touch hot surfaces.
8. Do not place on or near a hot gas or electric burner, or in a heated oven.
9. Unplug from outlet when not in use and before cleaning. Allow to cool before putting on or taking off parts, and before cleaning the appliance.
10. To protect against fire, electric shock and injury to persons do not immerse cord, plugs in water or other liquid.
11. Do not use appliance for other than intended use.
12. If the supply cord is damaged, it must be replaced by the manufacturer, its service agent or similarly qualified persons in order to avoid a hazard.
13. There is residual heat on the heating element surface after use. Be careful not to touch the hot surface of the pot when in use.

14. Intended for countertop use only.
15. **WARNING:** Spilled food can cause serious burns. Keep appliance and cord away from children. Never drape cord over edge of counter, never use outlet below counter, and never use with an extension cord.
16. **CAUTION:** For household use only.
17. **CAUTION:** Do not touch hot surfaces. Use handles or knobs.
18. The appliance is intended to be used in household and similar application scenarios such as:
 - staff kitchen areas in shops, offices and other working settings;
 - farm houses;
 - for clients' use in hotels, motels and other residential settings;
 - bed & breakfast related settings.
19. The appliance is not intended to be operated by, an external timer or a separate remote-control system.
20. Turn the appliance OFF, then unplug from the outlet when not in use, before assembling or disassembling parts and before cleaning. To unplug, grasp the plug and pull from the outlet. Never pull from the power cord.
21. Do not use outdoors.
22. Do not let cord hang over edge of table or counter, or touch hot surfaces.
23. Keep hands, hair, clothing, as well as spatulas and other utensils away from beaters during operation to reduce the risk of injury to persons, or damage to the mixer.
24. Remove beaters from mixer before washing.
25. A short power-supply cord is provided to reduce the risk resulting from becoming entangled in or tripping over a longer cord.
26. Close supervision is necessary when any appliance is used by or near children.
27. Extreme caution must be used when moving an appliance containing hot oil or other hot liquids.
28. Be sure that handles are assembled and fastened properly.
29. Do not place metallic objects such as knives, forks, spoons and lids on the hotplate since they can get hot.
30. This appliance is not intended to for deep frying foods.
31. CAUTION – Risk of Electric Shock. Cook only in removable container.
32. CAUTION – Unplug before assembling or removing parts.
33. CAUTION – To ensure continued protection against risk of electric shock, connect to properly grounded outlets only.
34. WARNING – SERIOUS HOT-OIL BURNS MAY RESULT FROM A DEEP FRYER (COOKER/FRYER, SKILLET, OR FRY PAN) BEING PULLED OFF A COUNTERTOP. DO NOT ALLOW THE CORD TO HANG OVER THE EDGE OF THE COUNTER WHERE IT MAY BE GRABBED BY CHILDREN OR BECOME ENTANGLED WITH THE USER. DO NOT USE WITH AN EXTENSION CORD.

SAVE THESE INSTRUCTIONS

FCC Supplier's Declaration of Conformity

TINECO / CHIERE ONE SERIES

This appliance complies with part 15 of the FCC Rules. Operation is subject to the following two conditions:

(1) This appliance may not cause harmful interference, and (2) this appliance must accept any interference received, including interference that may cause undesired operation.

TINECO INTELLIGENT, INC.

1700 WESTLAKE AVENUE N., SUITE 200, SEATTLE, WA, 98109, USA

WWW.TINECO.COM

1-855-292-8864

Caution: Changes or modifications not expressly approved by the party responsible for compliance could void the user's authority to operate the equipment.

Note: This equipment has been tested and found to comply with the limits for a Class B digital appliance, pursuant to Part 15 of the FCC Rules. These limits are designed to provide reasonable protection against harmful interference in a residential installation.

This equipment generates uses and can radiate radio frequency energy and, if not installed and used in accordance with the instructions, may cause harmful interference to radio communications. However, there is no guarantee that interference will not occur in a particular installation. If this equipment does cause harmful interference to radio or television reception, which can be determined by turning the equipment off and on, the user is encouraged to try to correct the interference by one or more of the following measures:

- (1) Reorient or relocate the receiving antenna.
- (2) Increase the separation between the equipment and receiver.
- (3) Connect the equipment into an outlet on a circuit different from that to which the receiver is connected.
- (4) Consult the dealer or an experienced radio/TV technician for help.

FCC Radiation Exposure Statement

This equipment complies with FCC radiation exposure limits set forth for an uncontrolled environment. This equipment should be installed and operated with a minimum distance of 20cm between the radiator and any part of your body.

Note

The manufacturer is not responsible for any radio or TV interference caused by unauthorized modifications to this equipment, such modifications could void the user's authority to operate this equipment.

IC Note

This appliance contains licence-exempt transmitter(s)/receiver(s) that comply with Innovation, Science and Economic Development Canada's licence-exempt RSS(s). Operation is subject to the following two conditions:

(1) This appliance may not cause interference.

(2) This appliance must accept any interference, including interference that may cause undesired operation of the appliance.

- This Class B digital apparatus complies with Canadian ICES-003.

- This equipment complies with ISED RSS-102 radiation exposure limits set forth for an uncontrolled environment. This equipment should be installed and operated with a minimum distance of 20cm between the radiator and any part of your body.

SPECIFICATIONS

Smart
Multi-cooker

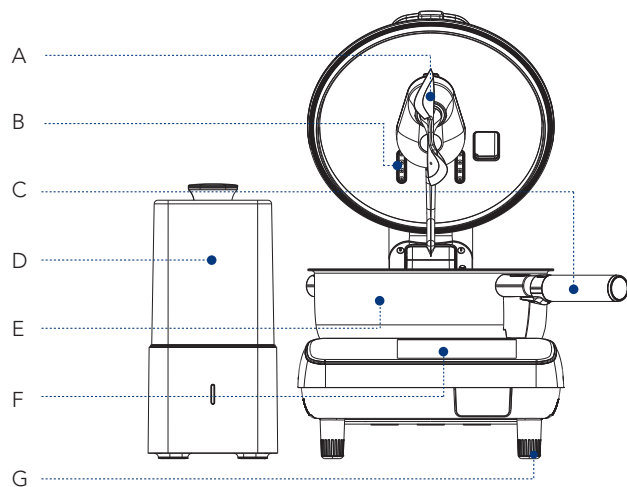
Product	Smart multi-cooker
Rated voltage	120V~
Rated frequency	60Hz
Rated Power	1500W
Screen size	5.0 inch
Dimension	12.8*19.1*13.0 inch (with foot supports on)
Pot diameter	13.0 inch
Capacity	6L
Net weight	≈16.1kg (Smart multi-cooker+Smart seasoning dispenser)

Smart
Seasoning
Dispenser

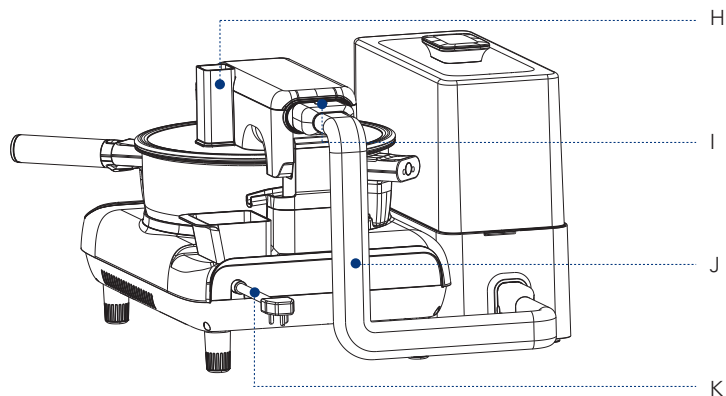
Product	Smart seasoning dispenser
Rated voltage	12V~
Rated power	10W
Dimension	15.4*13.4*6.2 inch
Capacity	2.4L (1L*1; 0.2L*7)

03

OVERVIEW



- A. Stirring spatula
- B. Feed port of seasoning dispenser
- C. Pot handle
- D. Seasoning dispenser
- E. Pot
- F. Touchscreen

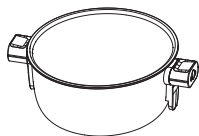


- G. Foot support
- H. Vapor outlet
- I. Connection port of seasoning dispenser
- J. Ingredient tube
- K. Power cord

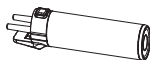
04

ACCESSORIES

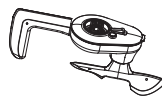
Main Unit



Pot



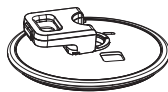
Pot handle



Stirring spatula



Liquid collector

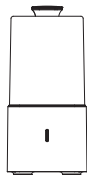


Pot lid

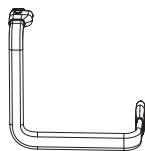


Steam grid kit

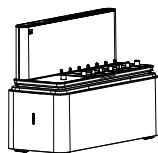
Seasoning Dispenser Unit



Smart seasoning dispenser



Ingredient tube



Seasoning dispenser base



Seasoning dispenser*8

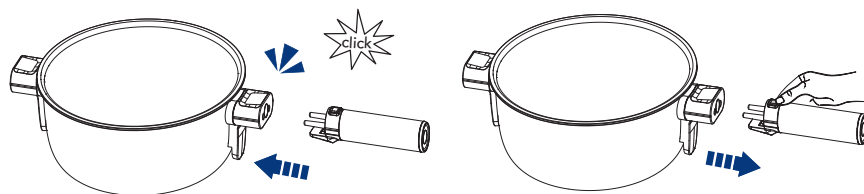


Seasoning dispenser hood

05

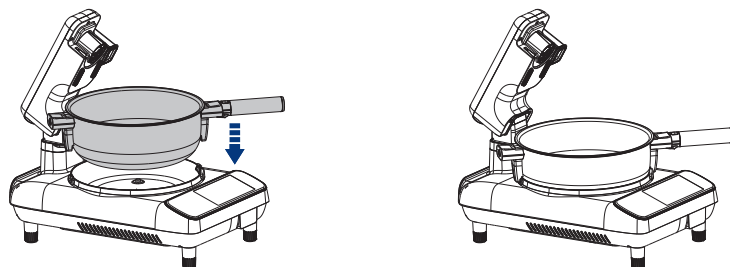
ASSEMBLY

Pot handle installation



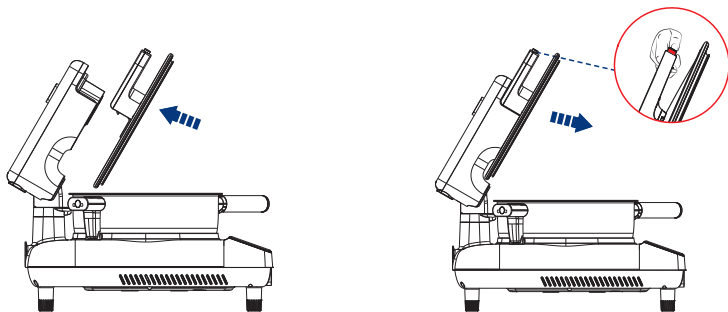
- Align the handle with the slot at either end of the pot and insert it. The installation is complete after a "click".
- After installation, hold the handle and pull it outward. If the handle is pulled out, it indicates that it has not been installed in place.
- Press the release button on the top of the handle and remove it.

Pot installation



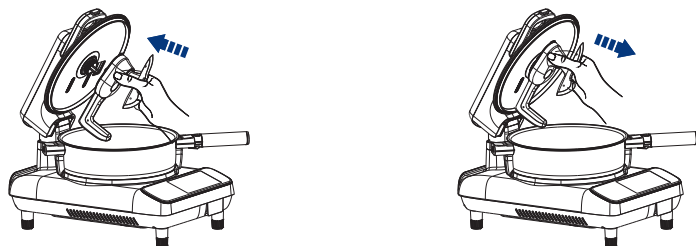
- Place the pot into the slotted position of the base to install.

Lid installation



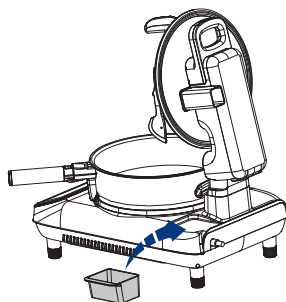
- As showed, align the pot lid with the slot to install, the installation is complete after a "click" sound.
- Press the release button on the top of the lid handle and remove it.

Stirring spatula installation



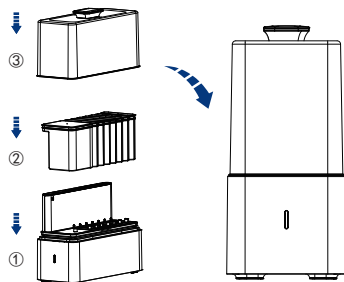
- Align the magnetically designed stirring spatula with the axis of the pot to install.
- Pull the stirring spatula vertically to remove it.

Liquid collector installation



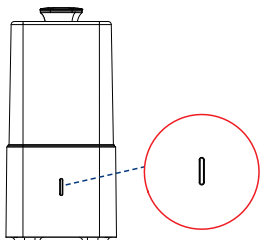
- As showed, place the liquid collector at the indicated position and it will attach automatically via magnetic suction.
- To remove it, simply lift it straight up.

Seasoning dispenser installation



- Remove all packaging materials.
- Install and operate the seasoning dispenser as showed.
- When using, place the seasoning dispenser on a flat table.
- Do not tap the seasoning dispenser during feeding to ensure feeding accuracy.

Seasoning dispenser indicator



Solid blue light: connected.

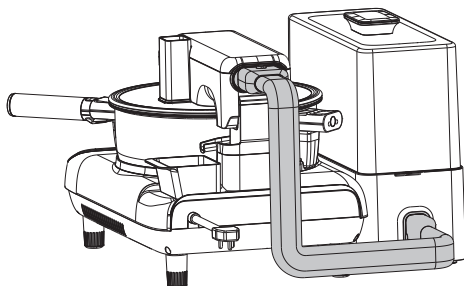


Indicator blinking: disconnected.



Solid red light: insufficient seasoning (in the box).

Seasoning dispenser connection



- Follow these instructions to connect the tube: Attach the end labeled "Main Unit" to the main unit and the end labeled "Seasoning Unit" to the seasoning dispenser. A "click" sound will confirm that the installation is complete.

Tips:

- Salt and water mixing: 1:4 (in weight), customize as per actual needs. Shake until the mixing is fully dissolved. Replace it every 7 days.
- Sugar and water mixing: 1:1 (in weight), customize as per actual needs. Shake until the mixing is fully dissolved. Replace it every 10 days.