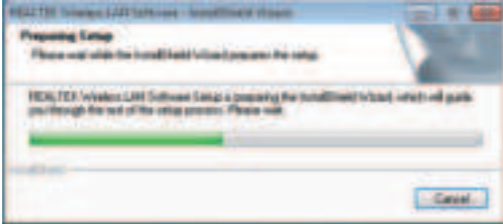


USB Wireless Adapter Quick Installation Guide

Note: This Manual based on Windows7

01. Put in the CD and find windows file “windows (xp,vista,win7,win8,win10)” and Setup.exe.

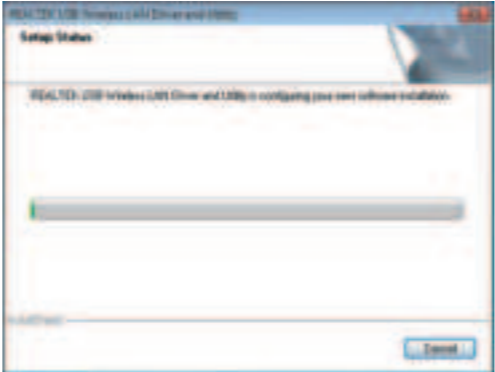
02. Double click Setup.exe file, Software begin to initialization,then click the “Next”.There shows the installation progress.



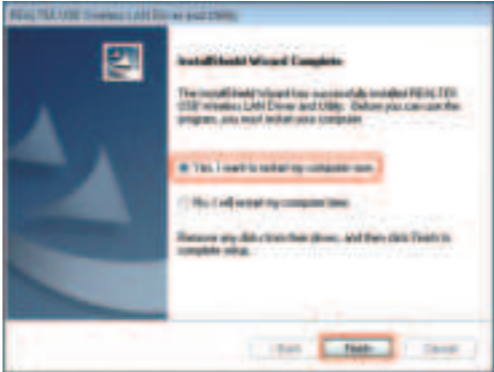
①



03. Do not interrupt installation, Click “finish” to finish the driver installation.The computer automatically restart.




③




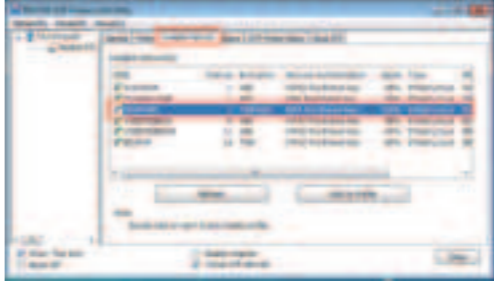
04.Plug the Wireless USB Adapter into the USB port of your PC

Wireless connection (two ways to realize Wireless connection 1 :

④

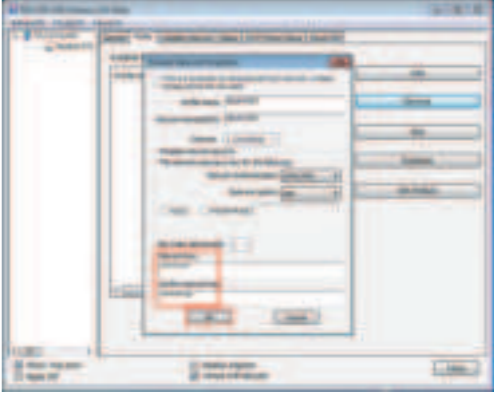
05.Click Icon  in the Windows system tray, which locates in the bottom-right corner of your computer screen

or double click , and pops up a message and click“Available Network” Double-click the utility icon or right click the icon ,and the Wireless Network Connection window appears then double click the SSID you preferred.

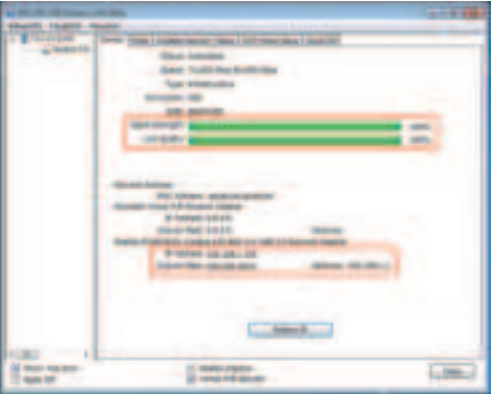



⑤

Type the encryption key that you wrote down earlier in both the Network key and Confirm network key boxes, and then click “ok”.

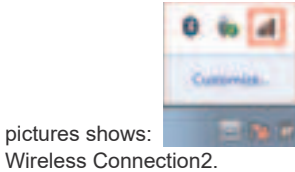


⑥




Note:if there is no icon , please find it in the on right bottom,it have been hide as following

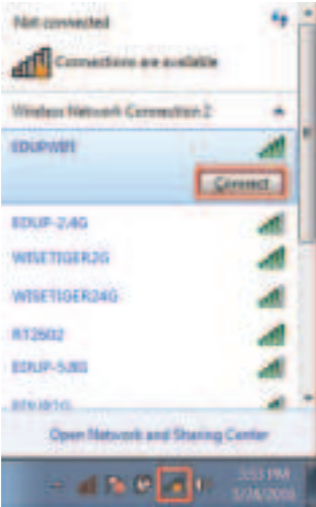
⑦



pictures shows: Wireless Connection2.

06. Click Icon  which locates in the bottom-right corner of your computer screen,click the wireless network list and choose the SSID you preferred. and double click (Or click “Connect”).

⑧



Type the encryption key and then click “ok”.

⑨



⑩

FCC warning:

This device complies with part 15 of the FCC Rules. Operation is subject to the following two conditions: (1) This device may not cause harmful interference, and (2) this device must accept any interference received, including interference that may cause undesired operation.

Note: This equipment has been tested and found to comply with the limits for a Class B digital device, pursuant to part 15 of the FCC Rules. These limits are designed to provide reasonable protection against harmful interference in a residential installation. This equipment generates uses and can radiate radio frequency energy and, if not installed and used in accordance with the instructions, may cause harmful interference to radio communications. However, there is no guarantee that interference will not occur in a particular installation. If this equipment does cause harmful interference to radio or television reception, which can be determined by turning the equipment off and on, the user is encouraged to try to correct the interference by one or more of the following measures:

⑪

- Reorient or relocate the receiving antenna.
- Increase the separation between the equipment and receiver.
- Connect the equipment into an outlet on a circuit different from that to which the receiver is connected.
- Consult the dealer or an experienced radio/TV technician for help.

The USB WiFi Adapter EP-AC1633 has been tested for body-worn Specific Absorption Rate (SAR) compliance. The FCC/IC has established detailed SAR requirements and has established that these requirements. RF Exposure Information The radio module has been evaluated under FCC Bulletin C95.1 and IEC/IEEE 62209-1528 and found to be compliant to RF Exposure from radio frequency devices. This model meets the applicable government requirements for exposure to radio frequency waves. The highest reported SAR level for usage near the body (0mm) is 1.463W/kg.

⑫

IC warning

- English: This device complies with Industry Canada licence-exempt RSS standard(s). Operation is subject to the following two conditions: (1) This device may not cause interference, and (2) This device must accept any interference, including interference that may cause undesired operation of the device.
- French: L'émetteur/récepteur exempt de licence contenu dans le présent appareil est conforme aux CNR d'Innovation, Sciences et Développement économique Canada applicables aux appareils radio exempts de licence. L'exploitation est autorisée aux deux conditions suivantes :
1) L'appareil ne doit pas produire de brouillage;
2) L'appareil doit accepter tout brouillage radioélectrique subi, même si le brouillage est susceptible d'en compromettre le fonctionnement.

⑬

Operations in the 5.15-5.25GHz band are restricted to indoor usage only

Les opérations dans la bande 5.15-5.25GHz sont limitées à une utilisation en intérieur uniquement

The WiFi Adapter EP-AC1633 has been tested for body-worn Specific Absorption Rate (SAR) compliance. The FCC/IC has established detailed SAR requirements and has established that these requirements. RF Exposure Information The radio module has been evaluated under FCC Bulletin C95.1 and IEC/IEEE 62209-1528 and found to be compliant to RF Exposure from radio frequency devices. This model meets the applicable government requirements for exposure to radio frequency waves. The highest reported SAR level for usage near the body (0mm) is 1.463W/kg.

⑭

⑮