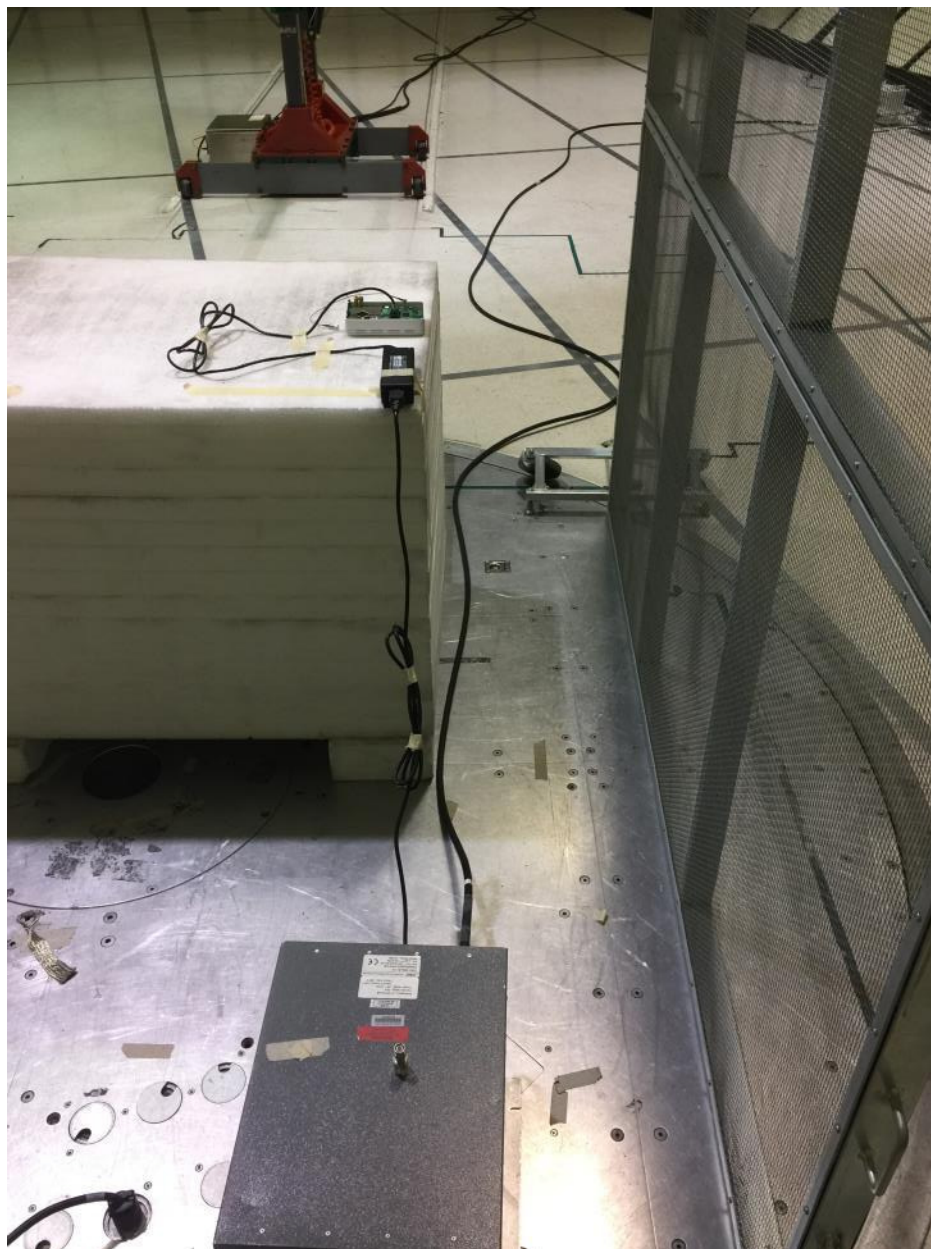




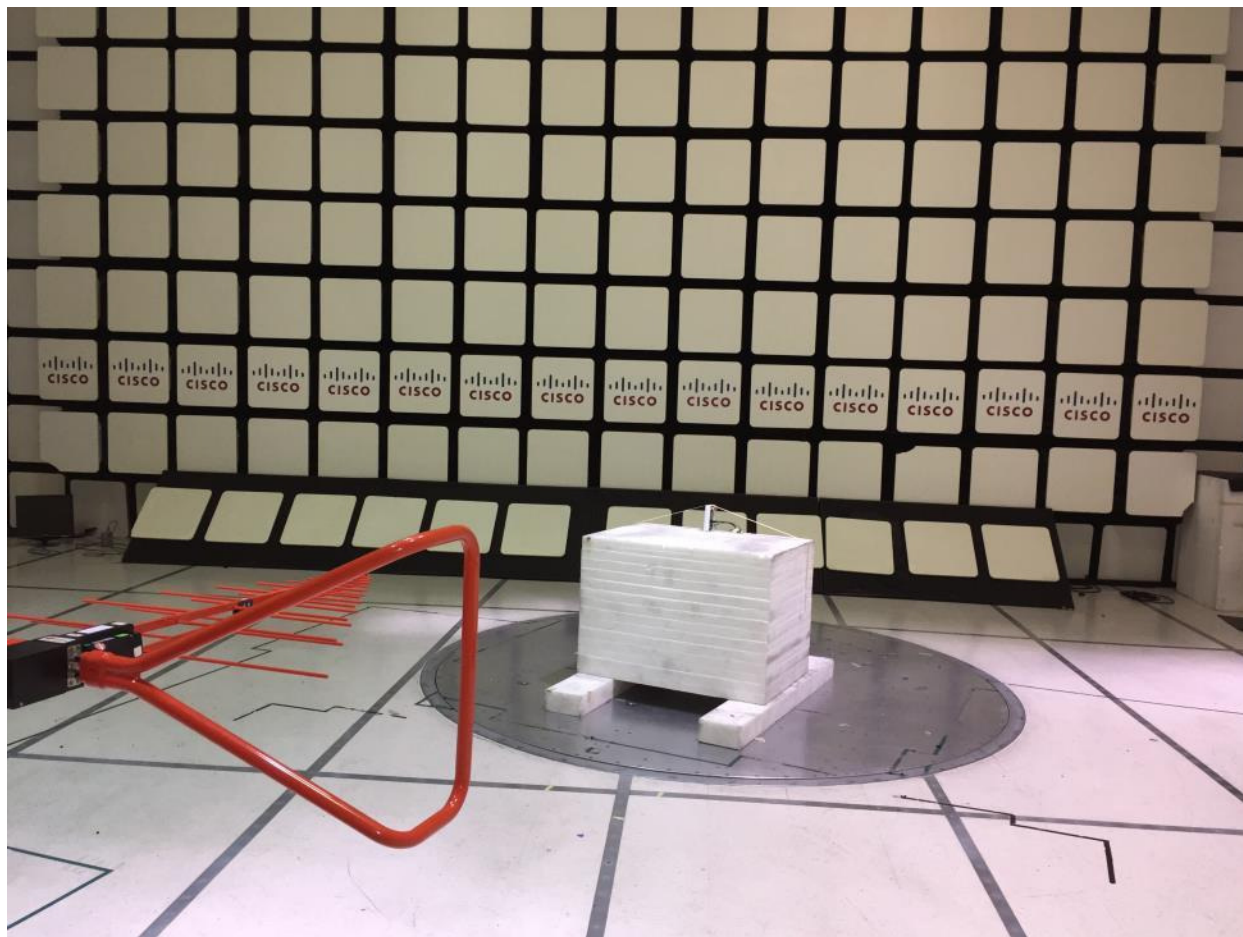
**Title: Conducted Test Setup**

This is a dual band 2.4GHz / 5GHz device. All ports in this test set up photo are connected as all testing is automated. Section 2.6 of this test report given an overview of the different Tx antenna combinations used by this device.

**AIR-AP1815W-x-K9** AC Mains Conducted Emissions setup



**AIR-AP1815W-x-K9** Radiated Emissions setup 30MHz – 1GHz



**AIR-AP1815W-x-K9** Radiated Emissions setup above 1GHz

