

## LIST OF EXHIBITS

DESCRIPTION	EXHIBITS	REFERENCE
I. Identification label Information & General Information	1	2.1033 (b) 7 & 2.925
1. Production Plans	1A	2.1031
2. Application References		N/A
3. Data submittal Procedure		
4. Similar Certified Transmitter		
II. Certification Data	2	
III. External Photographs	3	2.1033 (b) 7
IV. Block Diagrams (Circuit Diagrams) <i>-confidential</i>	4	2.1033 (b) 5
V. Schematic Diagrams & Antenna Assembly <i>-confidential</i>	5	2.1033 (b) 5
VI. <b>Supplemental Test Report WLAN</b>	6	2.1033 (b) 6

**Part 15.247 – DTS, WLAN IX 260 Supplemental EMC Test Report,  
For a previously Certified WLAN Intentional Radiator Module  
INTEL, Corp. FCC ID: PD9WM3B2200BG with the Rangestar antenna**

1) Reference Conducted RF Power Output Part 15.247(b) and Equivalent Isotropic Radiated Power

2) Field Strength of Three Fundamental Operating Frequencies

3) Radiated Harmonics and Spurious Emissions 802.11(b) mode

4) Radiated Harmonics and Spurious Emissions 802.11(g) mode

5) Band Edge measurements 802.11(b) mode

6) Band Edge measurements 802.11(g) mode

7) AC Power Line Conducted Emissions 150 kHz – 30 MHz, Part 15.107(a)

8) Radiated Spurious Emissions 30 – 1000 MHz, Part 15.209 (a)

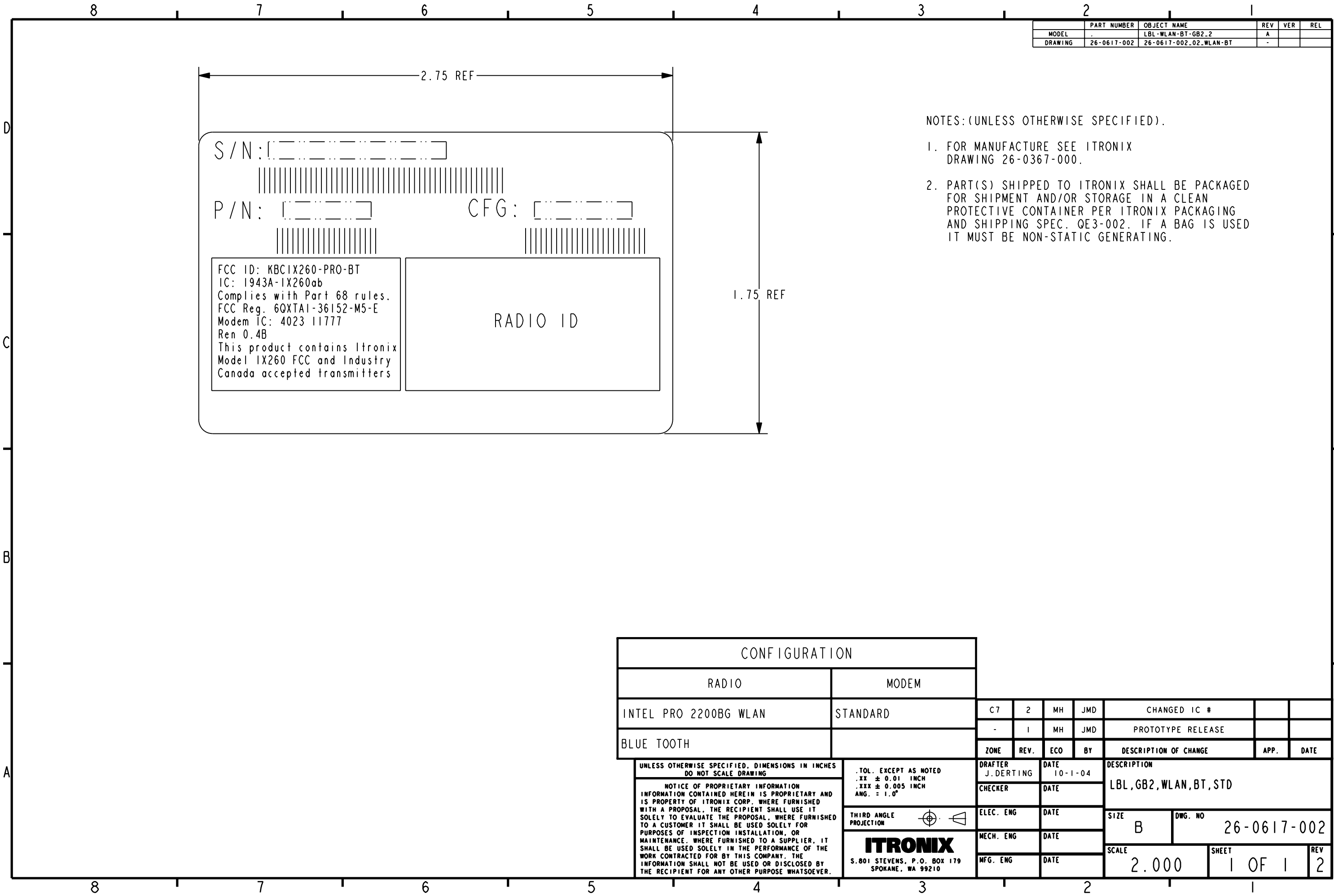
Note: *We reference some of the original test report exhibits for items Required by Part 15.247 (a), (b (1)), (d).*

	DESCRIPTION	EXHIBITS	REFERENCE
VI.	<b>Test Report Bluetooth Original ITRONIX Certification</b>	6	2.1033 (b) 6
	<b>Part 15.247 – FHSS, Complete EMC Test Report for the previously  Certified Bluetooth, Intentional Radiator Module, Mutsumi,  Elec. Co., Ltd., FCC ID: POOWML-C11XX, Model: WML-C11NU.  Installed in the IX260 and Certified under the FCC ID: KBCIX260MPIA750BT.</b>		
	Eleven Common Bluetooth Items	6	
	Six tests required	6	15.247 (a, b, c, g, h)
	1) The Occupied Bandwidth Section 15.247(a) ii		
	2) Conducted Output Power Section 15.247(b) 1		
	3) EIRP limit Section 15.247(b) 3		
	4) RF safety Section 15.247(b) 4	see Exhibit XII	
	5) Spurious Emissions Section 15.247 (c)		
	6) Power Spectral Density in Acquisition Mode		
VII.	Test Set-up Procedures	7	2.1041
VIII.	Instruction Manual	8	2.1033 (b) 3
IX.	Internal Photographs	9	2.1033 (b) 7
X.	Part List and Tune Up Procedures - <i>confidential</i>	10	2.1033
XI.	MPE RF Exposure Information	11	2.1093 & 15.247 (b)4
XII.	Operational Description - <i>confidential</i>	12	2.1033 (b) 1, 2, 4, 8
	Antenna Requirements	12	15.203
XIII.	Cover Letter, Action Requested	13	
	Cover Letter, Request For Confidentiality	13	
	Cover Letter, Authorization to sign FCC Form 731	13	

*Please NOTE: Exhibits 4, 5 and 10 & 12 are requested to held confidential*

## **EXHIBIT 1. FCC and INDUSTRY CANADA IDENTIFICATION LABEL**

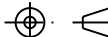
The FCC Identifier label required under Section: 47 CFR, 2.1033(c) 11 for the FCC ID: KBCIX260-PRO-BT is located on page following.  
The IC Identifier required by RSP-100 is also displayed.



	PART NUMBER	OBJECT NAME	REV	VER	REL
MODEL		LBL-WLAN-BT-GB2.2	A		
DRAWING	26-0617-002	26-0617-002.02.WLAN-BT	-		

NOTES: (UNLESS OTHERWISE SPECIFIED).

1. FOR MANUFACTURE SEE ITRONIX DRAWING 26-0367-000.
2. PART(S) SHIPPED TO ITRONIX SHALL BE PACKAGED FOR SHIPMENT AND/OR STORAGE IN A CLEAN PROTECTIVE CONTAINER PER ITRONIX PACKAGING AND SHIPPING SPEC. QE3-002. IF A BAG IS USED IT MUST BE NON-STATIC GENERATING.

CONFIGURATION																
RADIO					MODEM											
INTEL PRO 2200BG WLAN					STANDARD											
BLUE TOOTH																
<div>UNLESS OTHERWISE SPECIFIED, DIMENSIONS IN INCHES DO NOT SCALE DRAWING</div> <div>NOTICE OF PROPRIETARY INFORMATION INFORMATION CONTAINED HEREIN IS PROPRIETARY AND IS PROPERTY OF ITRONIX CORP. WHERE FURNISHED WITH A PROPOSAL, THE RECIPIENT SHALL USE IT SOLELY TO EVALUATE THE PROPOSAL, WHERE FURNISHED TO A CUSTOMER IT SHALL BE USED SOLELY FOR PURPOSES OF INSPECTION INSTALLATION, OR MAINTENANCE. WHERE FURNISHED TO A SUPPLIER, IT SHALL BE USED SOLELY IN THE PERFORMANCE OF THE WORK CONTRACTED FOR BY THIS COMPANY. THE INFORMATION SHALL NOT BE USED OR DISCLOSED BY THE RECIPIENT FOR ANY OTHER PURPOSE WHATSOEVER.</div>					.TOL. EXCEPT AS NOTED .XX ± 0.01 INCH .XXX ± 0.005 INCH ANG. = 1.0°		DRAFTER J.DERTING		DATE 10-1-04		DESCRIPTION  LBL,GB2,WLAN,BT,STD					
							CHECKER		DATE							
					THIRD ANGLE PROJECTION				ELEC. ENG		DATE		SIZE B		DWG. NO 26-0617-002	
									MECH. ENG		DATE					
				MFG. ENG		DATE										
					C7	2	MH	JMD	CHANGED IC #							
					-	1	MH	JMD	PROTOTYPE RELEASE							
					ZONE	REV.	ECO	BY	DESCRIPTION OF CHANGE		APP.	DATE				

## FCC ID label location on the bottom side of IX260 PC

FCC ID label is the large label, with a silver background and black lettering, located right of center, between the covers labeled RAM and BATTERY.



Note: Part 15.19 labeling requirement and compliance statement, located in upper left side, black label. Sample of the label text is below.

