

Tilvision



Instruction Manual
Bedienungsanleitung/Manuel d'instruction
Manual de instrucciones/Manuale di Istruzioni

WIRELESS SMART CAMERA

Model No.: HC-001

Contents	
EN	1. Included in Package.....01
DE	2. Parts Names..... 01
FR	3. Downloading & Installing APP..... 02
ES	4. Account Registration..... 05
IT	5. Adding a Device..... 06
	6. Important Notes Before Installation..... 13
	7. Installation..... 13
	8. Home Page.....15
	9. APP Settings.....16
	10. Monitor Page..... 20
	11. Device Settings..... 21
	12. Battery Management..... 22
	13. Specifications..... 22
	14. Trouble Shooting..... 23

Thank you for purchasing Tilvision Wireless Smart Camera. Please read this instruction manual before use to ensure safe operation.

This product contains multiple functions to protect your home:
Monitoring: monitor your house anytime and anywhere.
Motion Detection: receive a notification on your phone when a person has tripped the motion detector.
2-way Audio: talk to visitors in real time.
Alarm: scare off trespassers and robbers.
Expandable Storage: supports micro SD cards up to 128 GB.

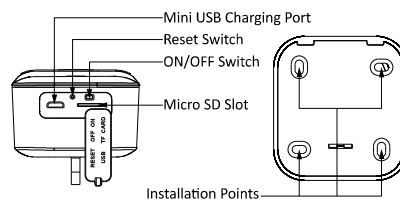
EN
DE
FR
ES
IT

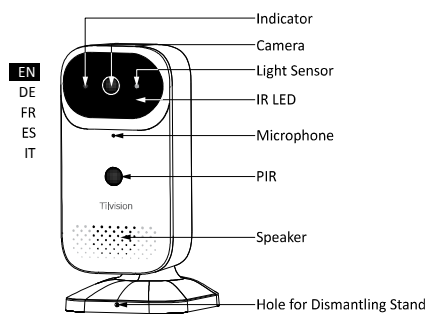
If you have any questions about your product, contact our customer service for assistance.

1. Included in Package:

- 1 x Wireless Camera
- 1 x Camera Stand
- 1 x Instruction Manual
- 1 x USB Cable
- 1 x Set of Screws

2. Parts Names:





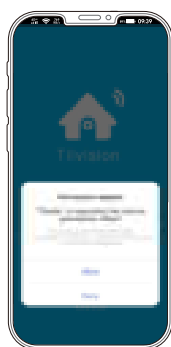
3. Downloading & Installing APP:

Download the Tilvision App in the Apple Appstore or Google Play Store, or scan the QR code below.



Once installed, open the app and allow the four permission requests shown below so the app works correctly on your device. (iOS requires these permissions when the relevant features are enabled).

EN
DE
FR
ES
IT

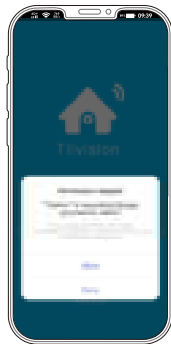


To properly enable the QR code function.



To allow the device to connect to Wifi.

EN
DE
FR
ES
IT



To allow photos and
videos to be stored.



To allow recorded photos
and videos to be viewed.

4. Account Registration:

If this is your first Tilvision product, you will be asked to set up a new account. To set up an account:

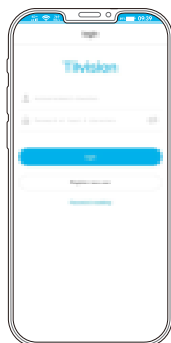
Open the Tilvision app.

Select "Register new user."

Follow the in-app instructions to create a new account.

If you already have another Tilvision device installed, simply open the Tilvision app and sign in.

EN
DE
FR
ES
IT



5. Adding a Device:

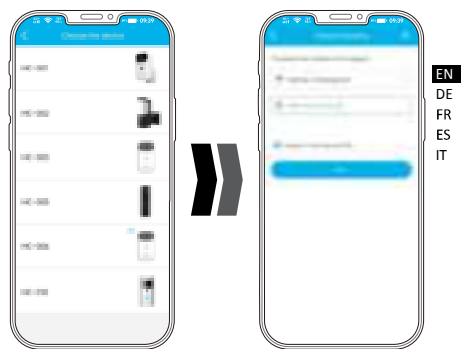
EN
DE
FR
ES
IT



Click "+".



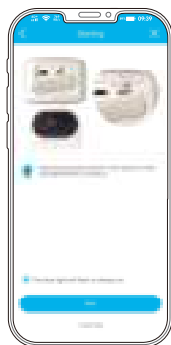
Click "Setup Device".



Choose the device HC-001.

Network Settings:
Enter the Wifi account
and password you want
the camera to connect to.

EN
DE
FR
ES
IT



Switch on the camera
as shown in the figure.



Reset the camera.



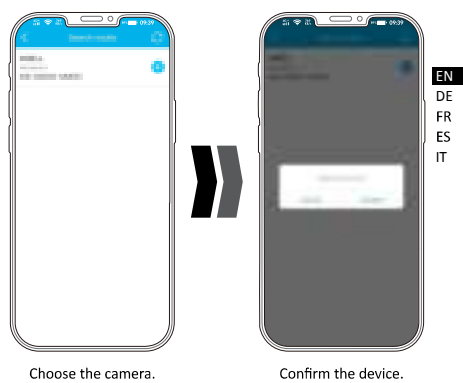
EN
DE
FR
ES
IT



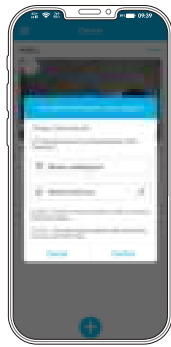
Choose 'Bell_*****'
from the available Wifi
networks on your phone.



Close the Tilvision app
then reopen it.



EN
DE
FR
ES
IT



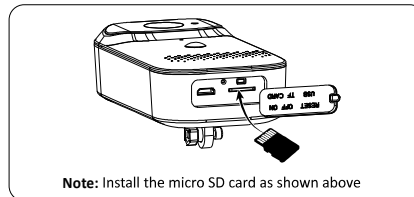
Confirm the Wifi settings.

6. Important Notes Before Installation:

- The camera should not be facing strong lights.
- The camera should be place in an area with stable Wifi signal.
- Motion detection is best within 3 meters and within a 120° angle, so the camera should be mounted appropriately.
- The PIR motion sensor can be affected by temperature, so mount in a position not affected by temperature.

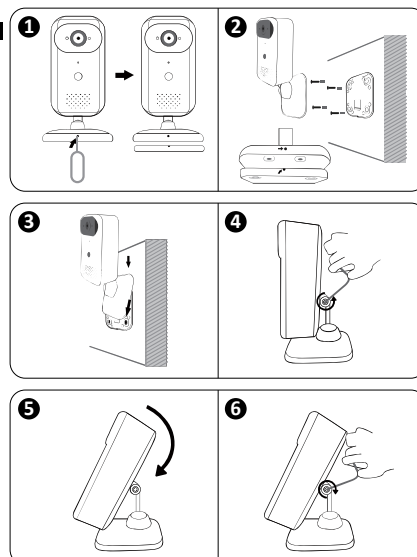
EN
DE
FR
ES
IT

7. Installation:

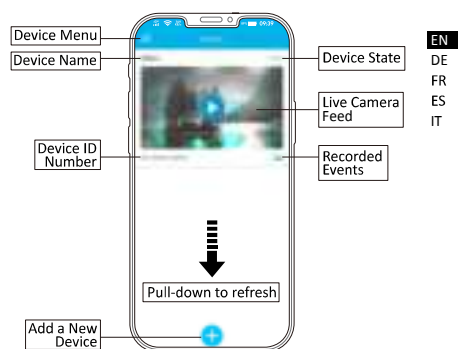


Place the camera on a table or on a wall, and adjust the angle as needed as shown below.

EN
DE
FR
ES
IT

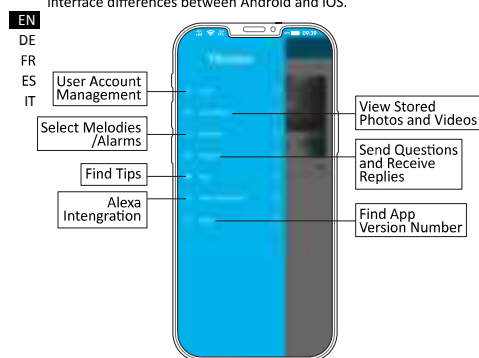


8. Home Page:

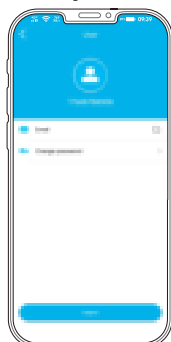


9. APP Settings:

Note: While the functions are the same, there may be small interface differences between Android and iOS.



9.1. User Account Management



Specify the email address to receive Customer Service replies and for resetting passwords.

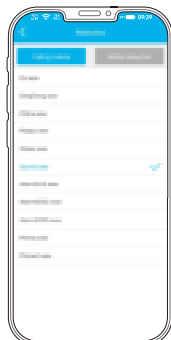
9.2. Stored Photos and Videos



View and edit stored photos and videos.

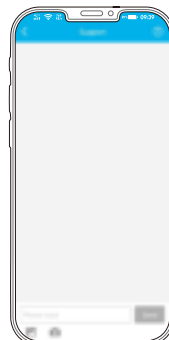
EN
DE
FR
ES
IT

9.3. Select Melodies/Alarms



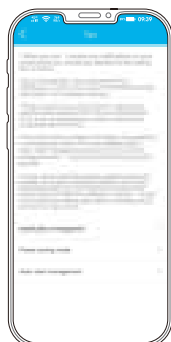
Note that this melody function is only for doorbell products and is not a function of this camera.

9.4. Send Questions and Receive Replies



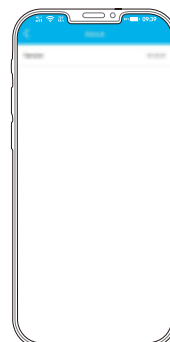
If your email address is added to your user profile, you will receive replies back both to your email and this support page.

9.5. Find Tips



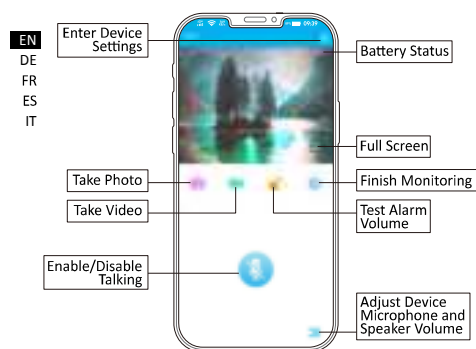
The Tips page is only available on Android.

9.6. Find App Version Number

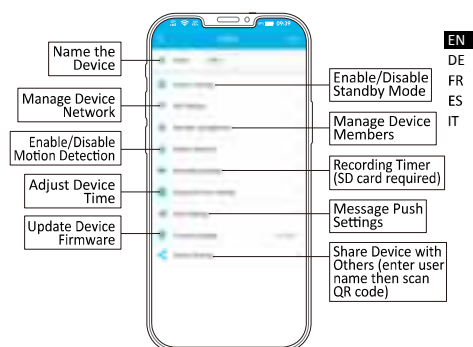


EN
DE
FR
ES
IT

10. Monitor Page:



11. Device Settings:



12. Battery Management:

- This camera has a built-in rechargeable 5200 mAh 18650 battery.
A full charge will last 2-4 months, assuming the camera wakes 10 times a day for 10 minutes each.
- Use a 2A/1A 5V charging adapter (not included). Charging time to full is 6-8 hours.
- An alert will appear on the monitoring interface when remaining battery power is less than 20%.
- Disposal of a battery into fire or a hot oven, or mechanically crushing or cutting of a battery, that can result in an explosion.
- Leaving a battery in an extremely high temperature surrounding environment that can result in an explosion or the leakage of flammable liquid or gas.
- A battery subjected to extremely low air pressure that may result in an explosion or the leakage of flammable liquid or gas.

13. Specifications:

Network	WIFI 802.11 b/g/n(2.4GHz)
Audio	Full duplex
Camera	1080P, 160 degree
Micro SD	Max 128G
Battery	Rechargeable 18650 2x2600mAh, DC5V/1A
Detection Distance	Within 3.5 meters
Environment	-20-30°C, 10-95% RH
WiFi Distance	50 meters in the open area

14. Trouble Shooting:

No.	Description	Solution
1	The device shown as offline in App	<ul style="list-style-type: none">• Wake up the camera• Try a different network
2	No response after inserting SD card	Restart device
3	No response after reset	Restart device then reset
4	Cannot change network	<ul style="list-style-type: none">• Change the network when device is online• Delete the camera then connect it to a new network
5	No motion detection push notifications	Make sure notifications are both turned on in smartphone settings and Tivision App
6	Voice and video delay	Make sure the Wifi network is functioning properly
7	Alarm photo does not show a person	<ul style="list-style-type: none">• The person was moving faster than the 1 sec needed for camera to wake• An animal or object around 36°C passed by• There was an alarm error. Double check for correct installation.

EN
DE
FR
ES
IT

FCC Regulatory Compliance:

EN This device complies with Part 15 of the FCC Rules. Operation is
DE subject to the following two conditions: (1) this device may not
FR cause harmful interference, and (2) this device must accept any
ES interference received, including interference that may cause
IT undesired operation.

ES changes or modifications not expressly approved by the party
IT responsible for compliance could void the user's authority to
operate the equipment.

This equipment has been tested and found to comply with the limits for a Class B digital device, pursuant to Part 15 of the FCC Rules. These limits are designed to provide reasonable protection against harmful interference in a residential installation. This equipment generates, uses and can radiate radio frequency energy and, if not installed and used in accordance with the instructions, may cause harmful interference to radio communications. However, there is no guarantee that interference will not occur in a particular installation.

If this equipment does cause harmful interference to radio or television reception, which can be determined by turning the equipment off and on, the user is encouraged to try to correct the interference by one or more of the following measures:

- Reorient or relocate the receiving antenna.
- Increase the separation between the equipment and receiver.
- Connect the equipment into an outlet on a circuit different from that to which the receiver is connected.
- Consult the dealer or an experienced radio/TV technician for help.

RF Exposure Compliance Statement:

This equipment complies with FCC radiation exposure limits set forth for an uncontrolled environment. This equipment should be installed and operated with minimum distance 20cm between the radiator and your body. This transmitter must not be co-located or operating in conjunction with any other antenna or transmitter.

EN
DE
FR
ES
IT