

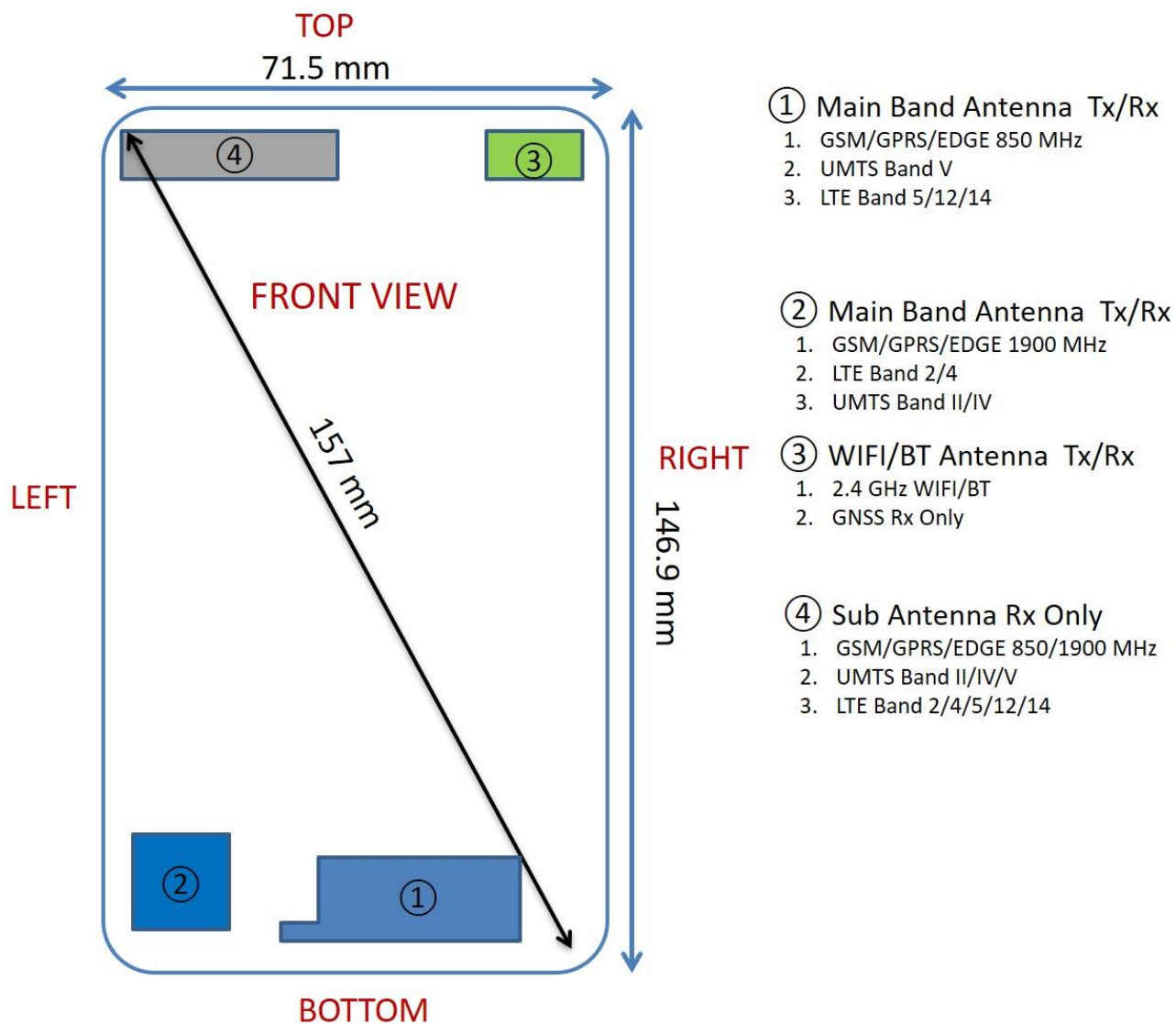




APPENDIX F: DUT ANTENNA DIAGRAM & SAR TEST SETUP PHOTOGRAPHS

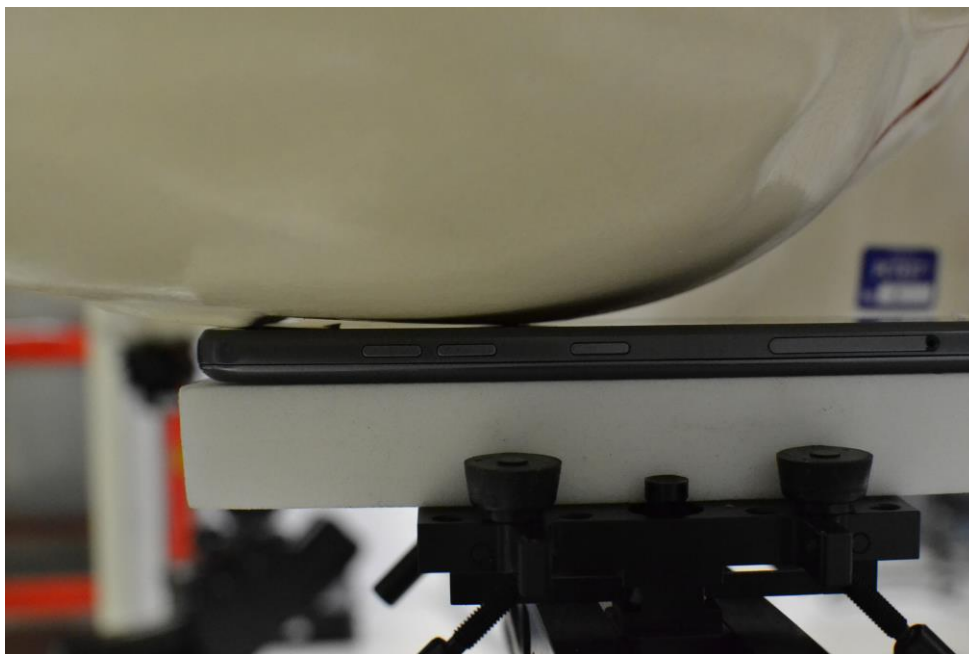
| | | | | |
|---|---|-----------------------------------|---|--|
| FCC ID ZNFX320APM |  | SAR EVALUATION REPORT |  | Approved by: Quality Manager |
| Test Dates: 05/20/2019 – 05/31/2019 | DUT Type: Portable Handset | APPENDIX F: Page 1 of 8 | | |



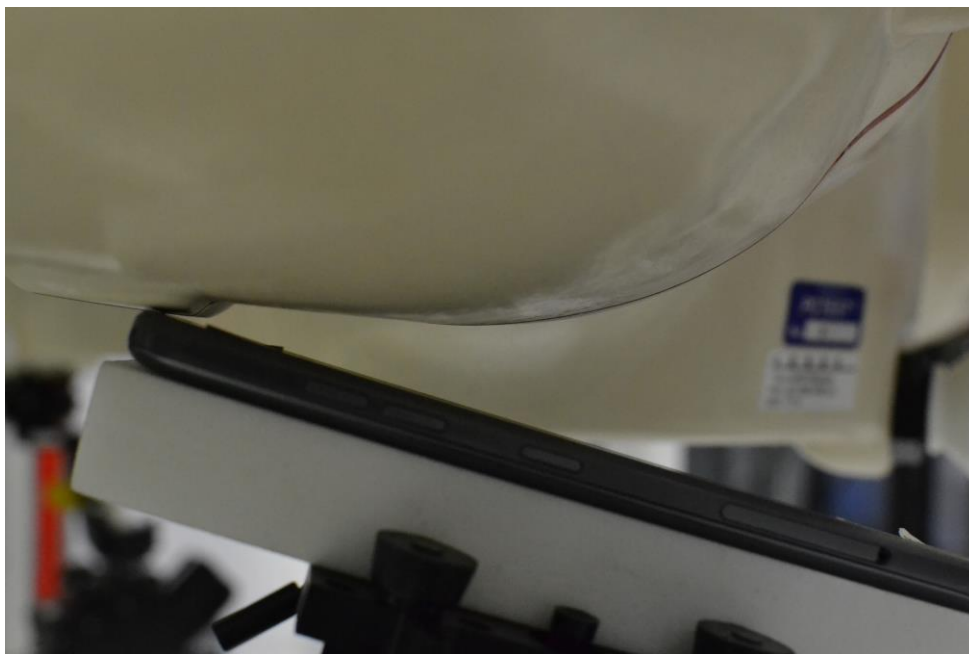
Note: Exact antenna dimensions and separation distances are shown in the Technical Descriptions in the FCC Filing.

Figure F-1
DUT Antenna Locations



| | | | | |
|--|---|-----------------------|---|---------------------------------|
| FCC ID ZNFX320APM |  | SAR EVALUATION REPORT |  | Approved by: Quality Manager |
| Test Dates: 05/20/2019 – 05/31/2019 | DUT Type: Portable Handset | | | APPENDIX F: Page 2 of 8 |



SAR Test Setup Photo 1 – Right Cheek



SAR Test Setup Photo 2 – Right Tilt



| | | | | |
|---|---|------------------------------|---|--|
| FCC ID ZNFX320APM |  PCTEST ENGINEERING LABORATORY, INC. | SAR EVALUATION REPORT |  LG | Approved by: Quality Manager |
| Test Dates: 05/20/2019 – 05/31/2019 | DUT Type: Portable Handset | | | APPENDIX F: Page 3 of 8 |

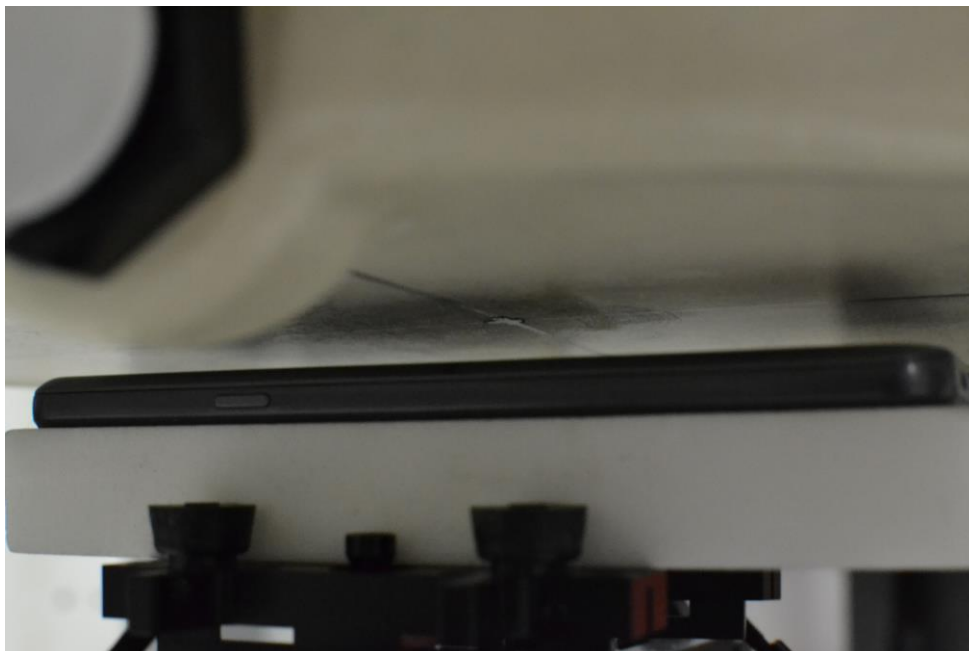


SAR Test Setup Photo 3 – Left Cheek

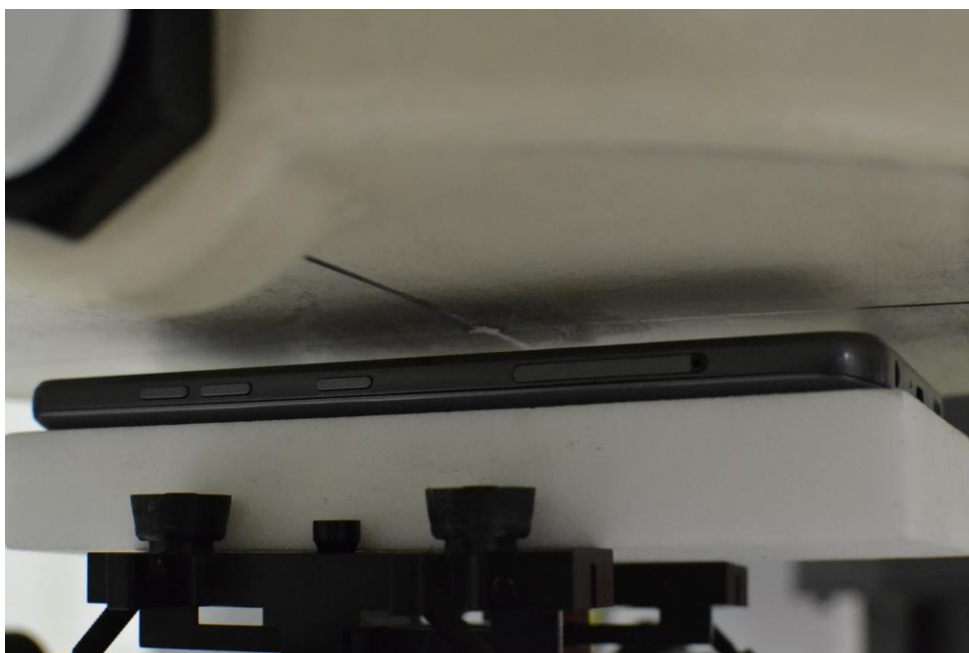


SAR Test Setup Photo 4 – Left Tilt



| | | | | |
|---|---|------------------------------|---|--|
| FCC ID ZNFX320APM |  | SAR EVALUATION REPORT |  | Approved by: Quality Manager |
| Test Dates: 05/20/2019 – 05/31/2019 | DUT Type: Portable Handset | APPENDIX F: Page 4 of 8 | | |



SAR Test Setup Photo 5 – Back side at 10 mm

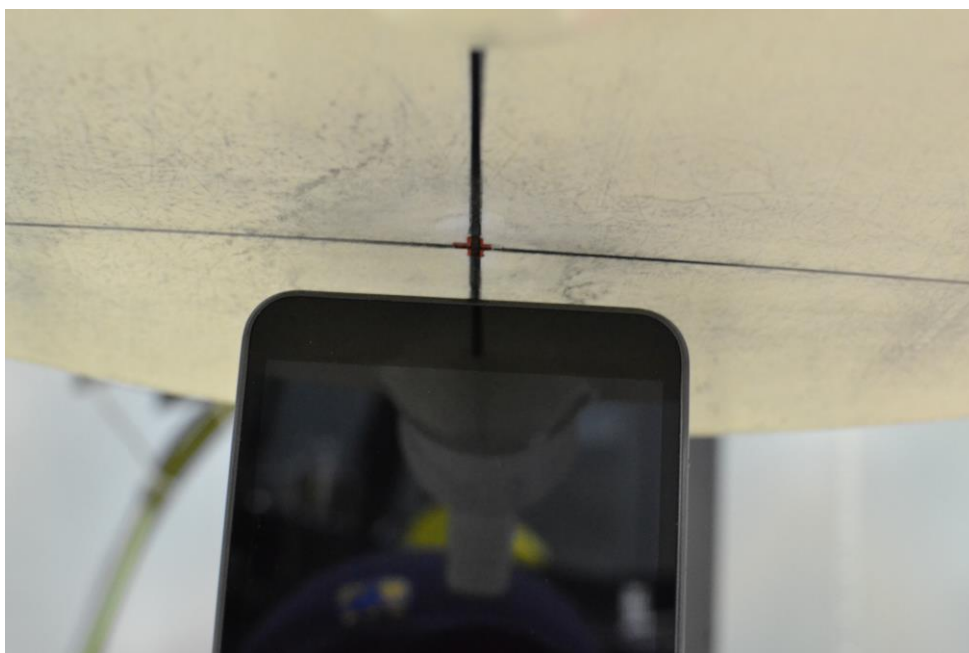


SAR Test Setup Photo 6 – Front side at 10 mm



| | | | | |
|---|---|------------------------------|---|--|
| FCC ID ZNFX320APM |  | SAR EVALUATION REPORT |  | Approved by: Quality Manager |
| Test Dates: 05/20/2019 – 05/31/2019 | DUT Type: Portable Handset | APPENDIX F: Page 5 of 8 | | |

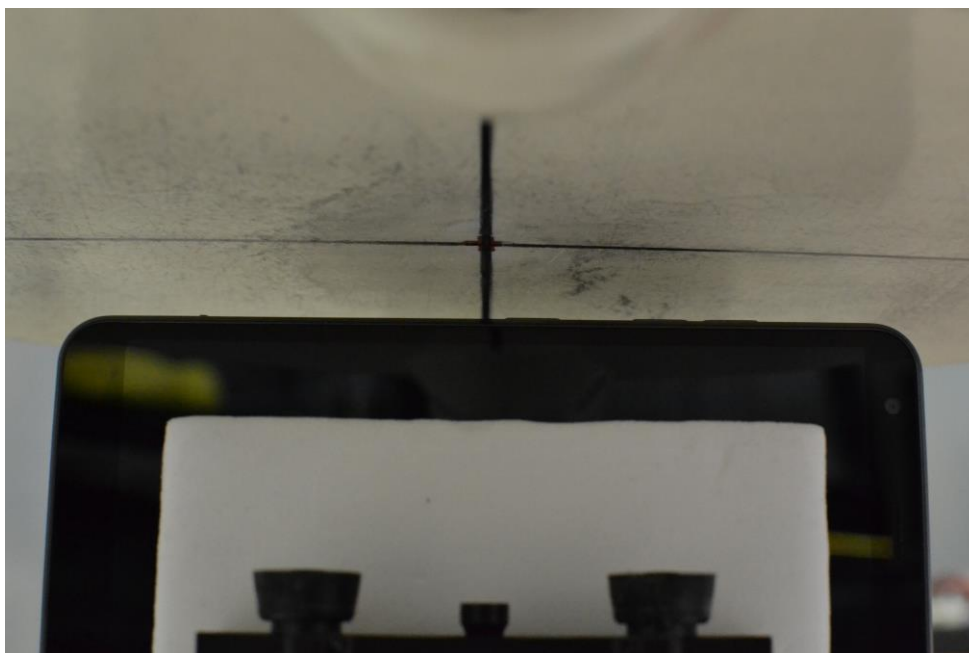


SAR Test Setup Photo 7 – Top edge at 10 mm

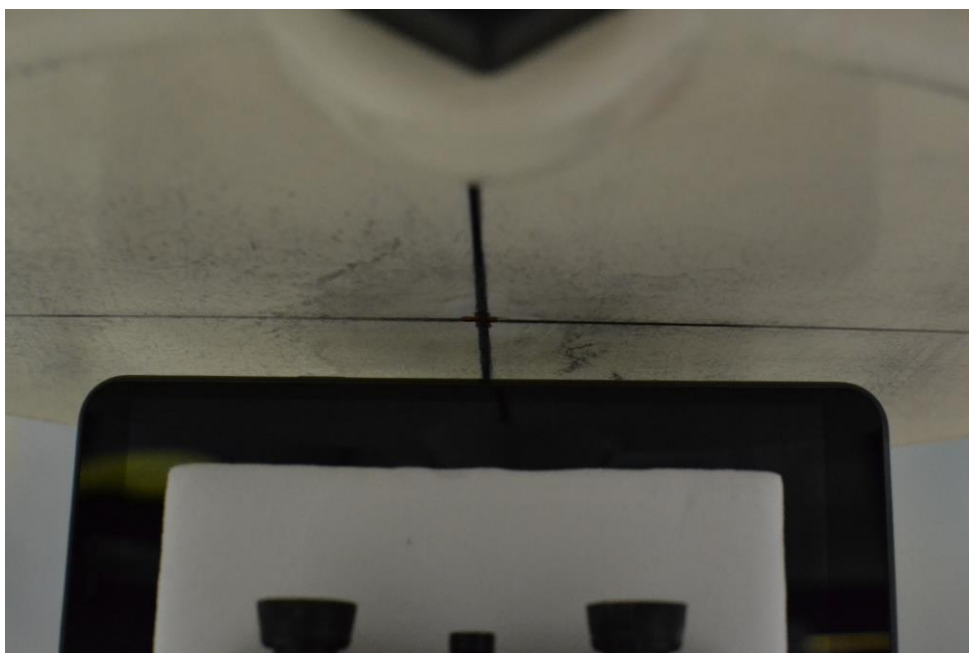


SAR Test Setup Photo 8 – Bottom edge at 10 mm



| | | | | |
|---|---|------------------------------|---|--|
| FCC ID ZNFX320APM |  | SAR EVALUATION REPORT |  | Approved by: Quality Manager |
| Test Dates: 05/20/2019 – 05/31/2019 | DUT Type: Portable Handset | | | APPENDIX F: Page 6 of 8 |



SAR Test Setup Photo 9 – Left edge at 10 mm





SAR Test Setup Photo 10 – Right edge at 10 mm

| | | | | |
|---|---|------------------------------|---|--|
| FCC ID ZNFX320APM |  | SAR EVALUATION REPORT |  | Approved by: Quality Manager |
| Test Dates: 05/20/2019 – 05/31/2019 | DUT Type: Portable Handset | | | APPENDIX F: Page 7 of 8 |

Horizontal Reference Line



SAR Test Setup Photo 11

| | | | | |
|---|---|------------------------------|---|--|
| FCC ID ZNFX320APM |  | SAR EVALUATION REPORT |  | Approved by: Quality Manager |
| Test Dates: 05/20/2019 – 05/31/2019 | DUT Type: Portable Handset | APPENDIX F: Page 8 of 8 | | |