



# SPECIFICATION

## APPLICATION FOR APPROVAL

客户名称 CUSTOMER : 深圳市美高电子设备有限公司  
客户案号 CS P/N : F7BSE  
零件名称 PART NAME :  
耀登案号 DEVE NO. : AUK02480B-WIFI2  
零件料号 PART NAME :  
承认日期 DATE : Nov. 1, 2025

客户确认:			
射频工程师	结构工程师	研发经理	产品经理
耀登电通科技(昆山)有限公司			
电气工程师	结构工程师	项目	核准
吕杰	孙涛	张园勤	朱敏

### 总部

耀登電通科技(昆山)有限公司  
江苏省昆山市周市镇迎宾路 15 号  
TEL: 0512-57646998  
FAX: 0512-57646168

### Head Quarter

Auden Techno(KUNSHAN)CO.LTD  
NO.15 YING-BIN ROAD, LUYANGTOWN, KUNSHAN , JIANGSU  
CHINA

### 分公司:

耀登電通科技(昆山)有限公司西安分公司  
西安市 高新区 唐延南路 10 号 中兴产业园 E1-04  
TEL: 13382157879

### Branch

Auden Techno(KUNSHAN)CO.LTD. Xi 'an branch  
E1-04, zhongxing industrial park, no.10 tangyan south road,  
high-tech zone, xi 'an

耀登電通科技(昆山)有限公司深圳分公司  
地址: 深圳市南山区桃源街道红花岭工业区第五区 A 栋二楼  
201-202 (南区)  
TEL: 185 8845 5257

Auden Techno(KUNSHAN)CO.LTD. Shenzhen branch  
Address: 201-202, 2nd floor, building A, zone 5, honghualing  
industrial zone, taoyuan street, nanshan district, shenzhen  
(southern district)

### CONFIDENTIAL

This message contains information that may be confidential and privileged. Unless you are the addressee (or authorized to receive messages for the addressee), you can not use, copy or disclose to any third party or any information contained in the message. If you have received the message in error, please advise the sender by reply e-mail and delete the message. Nothing in this message should be interpreted as a digital or electronic signature that can be used to authenticate a contract or other legal document. Thank you very much.

## INDEX

- 一、规格书封面 (Cover)
- 二、规格书目录 (Index)
- 三、天线基本参数 (The Basic Parameters)
- 四、电气测试报告 (RF Performance Test Report)
- 五、工程图纸 (Product Drawing)
- 六、尺寸报告 (Dimensional check reports)
- 七、可靠性测试报告 (Reliability test report)

## 修订 Revise

版本 Version	日期 Date	修订描述 Description
A	2023/11/10	更新线材长度后批量封样

---

### CONFIDENTIAL

This message contains information that may be confidential and privileged. Unless you are the addressee (or authorized to receive messages for the addressee), you can not use, copy or disclose to any third party or any information contained in the message. If you have received the message in error, please advise the sender by reply e-mail and delete the message. Nothing in this message should be interpreted as a digital or electronic signature that can be used to authenticate a contract or other legal document. Thank you very much.

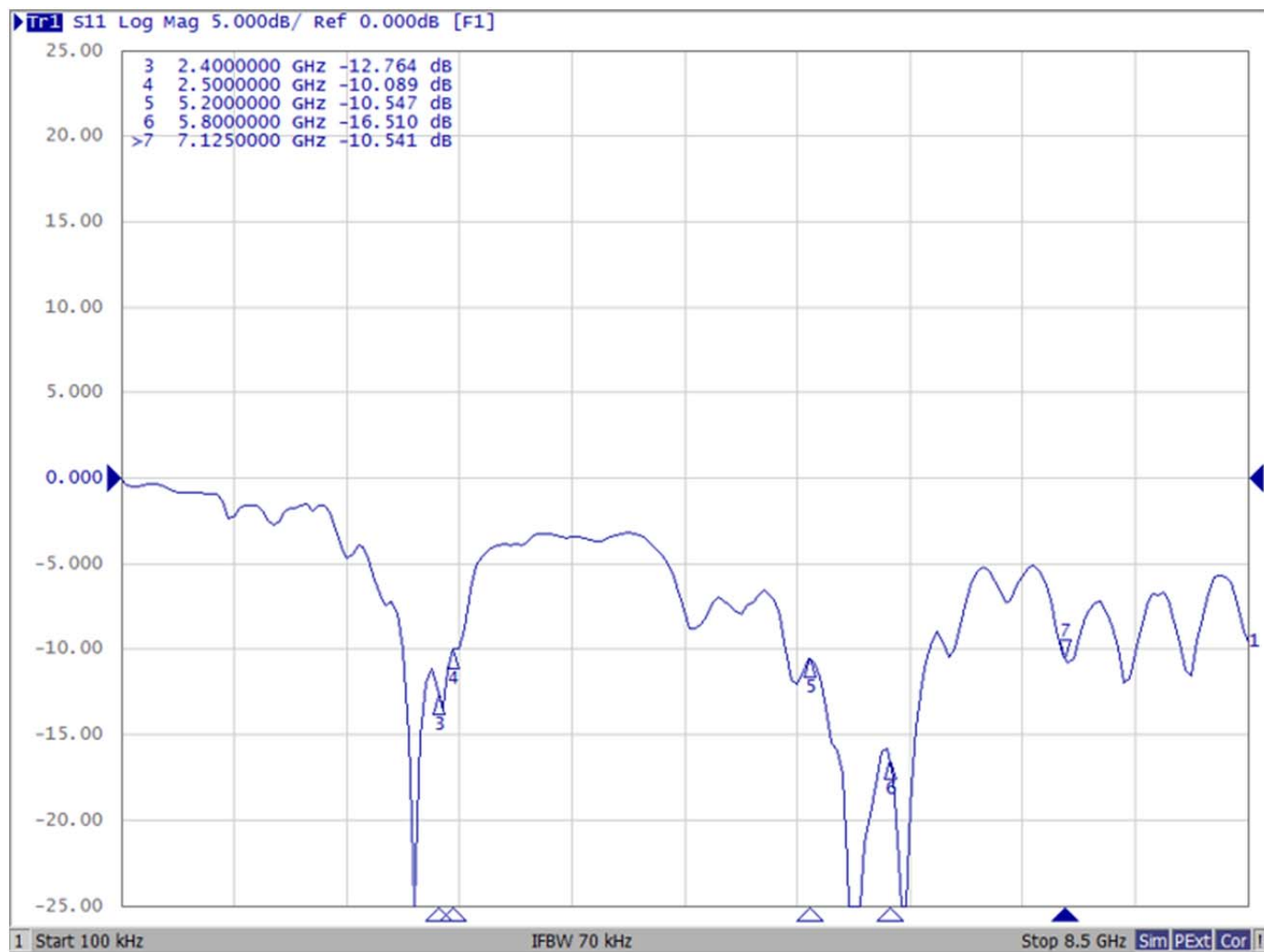
## 天线基本参数 (The Basic Parameters)

项目 (Item)	特性 (Specifications)
天线结构组成	FPC+CABLE
频率 (Frequency)	2.4g~5.8g
驻波比 (V. S. W. R)	$\leq 3$
增益 (Gain)	$\leq 7$
极化方式 (Polarization)	线极化
特性阻抗 (Impedance)	50 $\Omega$
塑胶材质 (Plastic material)	无
接头形式 (joint type)	4 代端子+Cable
工作温度 (Operation temperature)	-40°C to 85°C
储存温度 (Storage temperature)	-40°C to 85°C
湿度 (humidity)	Non-condensing 65°C 95% RH
天线图片	

## CONFIDENTIAL

This message contains information that may be confidential and privileged. Unless you are the addressee (or authorized to receive messages for the addressee), you can not use, copy or disclose to any third party or any information contained in the message. If you have received the message in error, please advise the sender by reply e-mail and delete the message. Nothing in this message should be interpreted as a digital or electronic signature that can be used to authenticate a contract or other legal document. Thank you very much.

## WIFI2-V.S.W.R



## CONFIDENTIAL

This message contains information that may be confidential and privileged. Unless you are the addressee (or authorized to receive messages for the addressee), you can not use, copy or disclose to any third party or any information contained in the message. If you have received the message in error, please advise the sender by reply e-mail and delete the message. Nothing in this message should be interpreted as a digital or electronic signature that can be used to authenticate a contract or other legal document. Thank you very much.

**WIFI2-无源测试数据**

测试频率	Efficiency- %	Gain(dBi)	测试频率	Efficiency- %	Gain(dBi)	测试频率	Efficiency- %	Gain(dBi)
2400	50.47	1.54	5150	42.54	3.47	6225	30.1	1.47
2410	51.29	1.52	5250	39.28	3.7	6325	21.5	0.82
2420	50.93	1.48	5350	44.3	4.43	6425	21.64	1.14
2430	49.87	1.55	5450	44.48	4.23	6525	26.9	1.79
2440	50.32	1.61	5550	46.33	3.76	6625	30.2	1.5
2450	51.06	1.71	5650	45.21	2.14	6725	26.9	1.05
2460	51.51	1.87	5750	45.31	3.06	6825	22.2	0.79
2470	52.1	2	5850	44.82	3.63	6925	19.81	0.63
2480	52.92	2.11	5925	40.17	2.52	7025	24.33	1.05
2490	53.08	2.15	6025	39.24	2.15	7125	30.7	1.93
2500	53.37	2.14	6125	41.87	2.64			

**CONFIDENTIAL**

This message contains information that may be confidential and privileged. Unless you are the addressee (or authorized to receive messages for the addressee), you can not use, copy or disclose to any third party or any information contained in the message. If you have received the message in error, please advise the sender by reply e-mail and delete the message.

Nothing in this message should be interpreted as a digital or electronic signature that can be used to authenticate a contract or other legal document. Thank you very much.

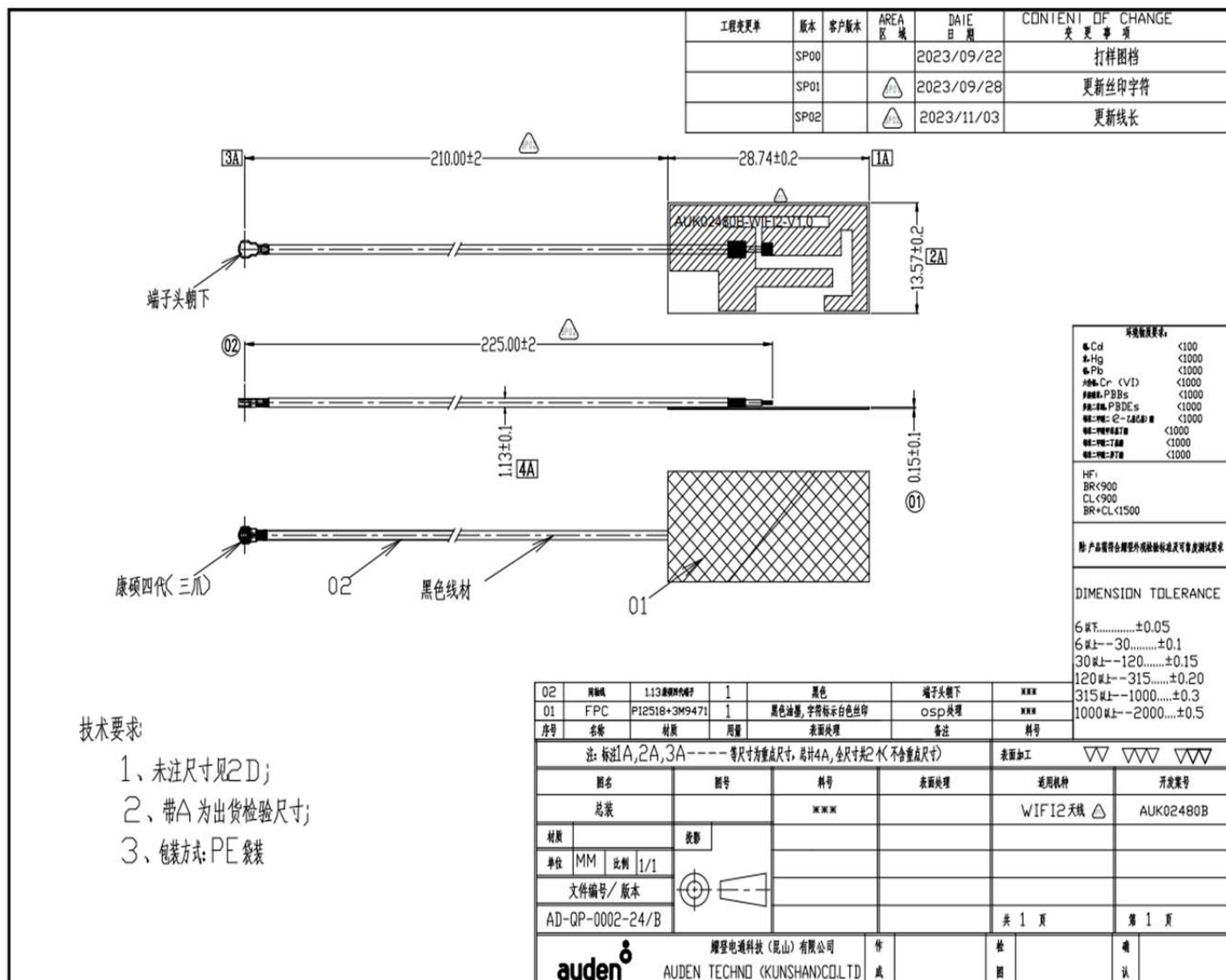
**有源测试数据**

	<b>channel</b>	<b>TRP</b>	<b>TIS</b>
<b>WiFi 2.4G- 802.11b</b>	1	12.57	-78.01
	7	11.42	-77.25
	3	12.38	-78.4
<b>WiFi 2.4G- 802.11a</b>	36	11.65	-68.1
	100	11.87	-69.01
	157	13.24	-67.45

**CONFIDENTIAL**

This message contains information that may be confidential and privileged. Unless you are the addressee (or authorized to receive messages for the addressee), you can not use, copy or disclose to any third party or any information contained in the message. If you have received the message in error, please advise the sender by reply e-mail and delete the message. Nothing in this message should be interpreted as a digital or electronic signature that can be used to authenticate a contract or other legal document. Thank you very much.

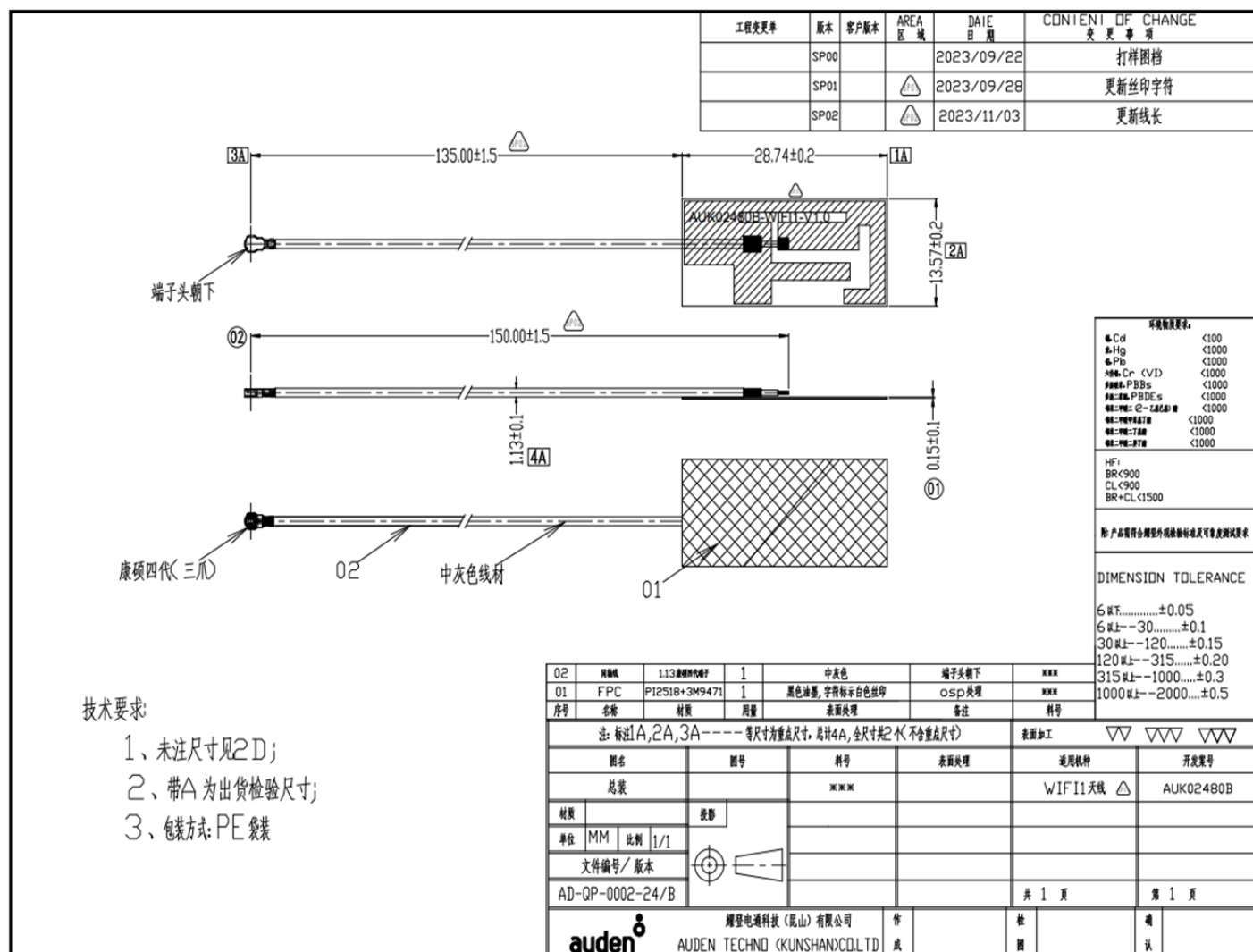
## 工程图纸 (Product Drawing)



## CONFIDENTIAL

This message contains information that may be confidential and privileged. Unless you are the addressee (or authorized to receive messages for the addressee), you can not use, copy or disclose to any third party or any information contained in the message. If you have received the message in error, please advise the sender by reply e-mail and delete the message. Nothing in this message should be interpreted as a digital or electronic signature that can be used to authenticate a contract or other legal document. Thank you very much.

## 工程图纸 (Product Drawing)



**CONFIDENTIAL**

This message contains information that may be confidential and privileged. Unless you are the addressee (or authorized to receive messages for the addressee), you can not use, copy or disclose to any third party or any information contained in the message. If you have received the message in error, please advise the sender by reply e-mail and delete the message. Nothing in this message should be interpreted as a digital or electronic signature that can be used to authenticate a contract or other legal document. Thank you very much.