

onn.

USER GUIDE  
16 Mile Walkie Talkie 2 Pack



For product assistance & missing or replacement parts:  
**WE CAN HELP!**  
**1-888-516-2630**  
7 DAYS/WEEK 7:00am-9:00pm CST  
Find more at [Walmart.com](http://Walmart.com)

1001926, EN\_0812024

Content & Information

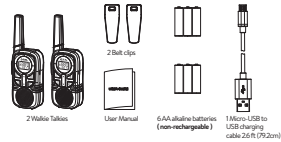
Content & Information	2	Advanced Features	7-8
Features	2	Setting Interference Eliminator Code	7
Overview	3-4	Call Tone	8
What's in the Box?	2	VOC (Voice Operated Transmission)	8
Safety Precautions	4-5	2CH Dual Watch (Dual Channel Monitor)	8
Getting Started	6	Specific Features	8-10
Basic Operations	7	Weather Options	10
Adjusting Volume	7	Cleaning & Care	10
Changing Channels	7	Warranty	11
Making a Call	7	Specifications	11
Push-to-Talk Timeout Timer	7	Troubleshooting / Frequently Asked Questions (FAQ)	11-12

- FEATURES**
- Built-in LED light
  - 22 channels
  - Weather channels
  - Works with AA standard alkaline batteries (included) or rechargeable NiMH batteries

- Mountain to Valley - Up to 16 miles
- Open Water - Up to 8 miles
- Neighborhood - Up to 1 mile

Overview

What's in the Box?



**General Frequency Channel**  
While in Standby mode or when selecting a channel, it shows the current channel (1-22).

**Volume Numbers**  
Adjusting the volume shows the current level (0L - 7L).

**VOC**  
When the call tone is adjusted, the "CA" appears.

**VOC Sensitivity Numbers**  
Adjusting the VOC controls the current level, which ranges from 0 to 3.

**2CH Channel Numbers**  
When adjusting the 2CH, it shows the current channel (1 - 22 or "OFF").

**Weather Icon**  
The indicator that shows when the radio is in Weather Band mode.

**Battery meter**  
Shows the current battery level.

**Scan Icon**  
Indicates when VOC mode is active.

**Key Lock Icon**  
Indicates when KEY LOCK mode is active.

**Receive Icon**  
Indicates that the radio is receiving a transmission.

**Transmit Icon**  
Indicates that the radio is transmitting a signal.

**Mute Icon**  
Indicates the volume of the radio is mute.

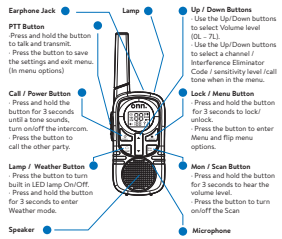
**DCS/CTCSS Privacy Code Numbers**  
Change from 0-121.

**Time Numbers**  
Adjusting the call tone shows the current level (0 - 10).

**2CH Dual Watch**  
When the 2CH is adjusted, the "CH" appears.

2

3



Safety Precautions

- Follow battery installation instructions carefully to avoid overheating.
- Do not use in prohibited areas.
- Keep the device dry and clean.
- Avoid extreme temperatures.

RF Exposure and Product Safety Instructions for Portable Two-Way Radios in General Populated and Uncontrolled Environments

Compliance with RF Exposure Standards  
Your Two-Way radio complies with the following RF energy exposure standards and guidelines:

- United States Federal Communications Commission, Code of Federal Regulations: 47 CFR et seq. & FCC.
- Institute Electrical and Electronic Engineers (IEEE) C95.1.

Transmit and Receive Procedure

To control your exposure and ensure compliance with general population/

4

uncontrolled environment exposure limits, adhere to following procedure:

- Transmit no more than 50% of time.
- To transmit (talk), press and hold the PTT button. To receive calls, release PTT button.
- Hold radio in a vertical position with microphone (and antenna) at least one inch away from your mouth. Keeping radio at a proper distance is important to ensure compliance.

NOTE

RF exposure decreases with increasing distance from antenna.

Two-Way Operation

- Use only approved supplied or replacement antennas and audio accessories.

NOTE

All controls, adjustments, and switches are specified in the manual or follow up instructions provided by the manufacturer, which can be operated or adjusted without violating FCC rules.

WARNING

Changes or modification to this unit not expressly approved by party responsible for compliance could void user's authority to operate equipment.

FCC SAR Statement

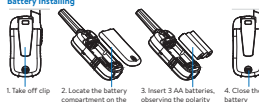
This equipment complies with FCC radiation exposure limits set forth for an uncontrolled environment. End user must follow specific operating instructions for satisfying RF exposure compliance. This transmitter must not be co-located or operating in conjunction with any other antenna or transmitter. Portable device is designed to meet requirements for exposure to radio waves established by Federal Communications Commission (USA). These requirements set a SAR limit of 1.6 W/kg averaged over one gram of tissue. Highest SAR value reported under this standard during product certification for use when properly worn at a maximum distance of 0 mm from the body, in line of face with minimum distance 20mm.

WARNING

- Do not use charger or conductive tools to remove batteries.
- Do not mix old and new batteries and do not mix alkaline, standard (carbon-zinc) or rechargeable (Ni-cad, Ni-mh, etc.) batteries.



Getting Started



**NOTE: The device is compatible with rechargeable Ni-MH batteries (sold separately).**

Low Battery Level

When the battery low status, radio will sound (Low Battery Alert) every 10 minutes or after releasing PTT button.

Charging



NOTE

- It is recommended to power OFF your radio while charging.
- When moving between hot and cold temperatures, do not charge NiMH batteries until battery temperature acclimates (usually about 20 minutes).
- For optimal battery life, remove radio from charger within 16 hours. Do not store radio while connected to charger.

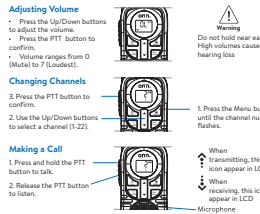
Turning the Device On/Off

- To turn on: Press and hold the Power button for 3 seconds.
- To turn off: Press and hold the Power button for 3 seconds.

Non-FCC ID Label (in battery compartment, it could be easily found by removing battery cover).

6

Basic Operations



**Warning**  
Do not hold near ear!  
High volumes cause hearing loss.

**Push-to-Talk Timeout Timer**  
To prevent accidental transmissions and save battery life, radio will stop transmitting if you press PTT button for 60 seconds continuously.

**NOTE: Do not hold radios less than 5 feet apart.**  
**NOTE: Do not cover microphone while talking.**

**NOTE: Do not hold radios less than 5 feet apart.**

**NOTE: Do not hold radios less than 5 feet apart.**

**NOTE: Do not hold radios less than 5 feet apart.**

**NOTE: Do not hold radios less than 5 feet apart.**

**NOTE: Do not hold radios less than 5 feet apart.**

**NOTE: Do not hold radios less than 5 feet apart.**

**NOTE: Do not hold radios less than 5 feet apart.**

**NOTE: Do not hold radios less than 5 feet apart.**

**NOTE: Do not hold radios less than 5 feet apart.**

**NOTE: Do not hold radios less than 5 feet apart.**

**NOTE: Do not hold radios less than 5 feet apart.**

**NOTE: Do not hold radios less than 5 feet apart.**

**NOTE: Do not hold radios less than 5 feet apart.**

**NOTE: Do not hold radios less than 5 feet apart.**

**NOTE: Do not hold radios less than 5 feet apart.**

**NOTE: Do not hold radios less than 5 feet apart.**

**NOTE: Do not hold radios less than 5 feet apart.**

**NOTE: Do not hold radios less than 5 feet apart.**

**NOTE: Do not hold radios less than 5 feet apart.**

**NOTE: Do not hold radios less than 5 feet apart.**

**NOTE: Do not hold radios less than 5 feet apart.**

**NOTE: Do not hold radios less than 5 feet apart.**

**NOTE: Do not hold radios less than 5 feet apart.**

**NOTE: Do not hold radios less than 5 feet apart.**

**NOTE: Do not hold radios less than 5 feet apart.**

**NOTE: Do not hold radios less than 5 feet apart.**

**NOTE: Do not hold radios less than 5 feet apart.**

**NOTE: Do not hold radios less than 5 feet apart.**

**NOTE: Do not hold radios less than 5 feet apart.**

**NOTE: Do not hold radios less than 5 feet apart.**

**NOTE: Do not hold radios less than 5 feet apart.**

**NOTE: Do not hold radios less than 5 feet apart.**

**NOTE: Do not hold radios less than 5 feet apart.**

**NOTE: Do not hold radios less than 5 feet apart.**

**NOTE: Do not hold radios less than 5 feet apart.**

**NOTE: Do not hold radios less than 5 feet apart.**

**NOTE: Do not hold radios less than 5 feet apart.**

**NOTE: Do not hold radios less than 5 feet apart.**

**NOTE: Do not hold radios less than 5 feet apart.**

**NOTE: Do not hold radios less than 5 feet apart.**

**NOTE: Do not hold radios less than 5 feet apart.**

**NOTE: Do not hold radios less than 5 feet apart.**

**NOTE: Do not hold radios less than 5 feet apart.**

**NOTE: Do not hold radios less than 5 feet apart.**

**NOTE: Do not hold radios less than 5 feet apart.**

**NOTE: Do not hold radios less than 5 feet apart.**

**NOTE: Do not hold radios less than 5 feet apart.**

**NOTE: Do not hold radios less than 5 feet apart.**

**NOTE: Do not hold radios less than 5 feet apart.**

**NOTE: Do not hold radios less than 5 feet apart.**

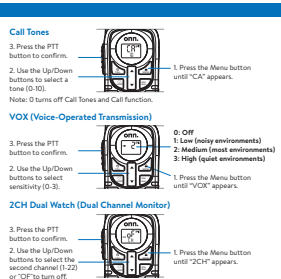
**NOTE: Do not hold radios less than 5 feet apart.**

**NOTE: Do not hold radios less than 5 feet apart.**

**NOTE: Do not hold radios less than 5 feet apart.**

**NOTE: Do not hold radios less than 5 feet apart.**

7



**Call Tones**  
1. Press the PTT button to confirm.  
2. Use the Up/Down buttons to select a tone (0-10).  
Note: 0 turns off Call Tones and Call Function.

**VOC (Voice-Operated Transmission)**  
0: OFF  
1: Low (noisy environments)  
2: Medium (most environments)  
3: High (quiet environments)

**2CH Dual Watch (Dual Channel Monitor)**  
1. Press the Menu button until "VOC" appears.  
2. Press the Up/Down buttons to select a channel (1-22).  
3. Press the PTT button to confirm.

**Set Call Tones**  
1. Press the Menu button until "VOC" appears.  
2. Press the Up/Down buttons to select a tone (0-10).  
3. Press the PTT button to confirm.

**Set Call Tones**  
1. Press the Menu button until "VOC" appears.  
2. Press the Up/Down buttons to select a tone (0-10).  
3. Press the PTT button to confirm.

**Set Call Tones**  
1. Press the Menu button until "VOC" appears.  
2. Press the Up/Down buttons to select a tone (0-10).  
3. Press the PTT button to confirm.

**Set Call Tones**  
1. Press the Menu button until "VOC" appears.  
2. Press the Up/Down buttons to select a tone (0-10).  
3. Press the PTT button to confirm.

**Set Call Tones**  
1. Press the Menu button until "VOC" appears.  
2. Press the Up/Down buttons to select a tone (0-10).  
3. Press the PTT button to confirm.

**Set Call Tones**  
1. Press the Menu button until "VOC" appears.  
2. Press the Up/Down buttons to select a tone (0-10).  
3. Press the PTT button to confirm.

**Set Call Tones**  
1. Press the Menu button until "VOC" appears.  
2. Press the Up/Down buttons to select a tone (0-10).  
3. Press the PTT button to confirm.

**Set Call Tones**  
1. Press the Menu button until "VOC" appears.  
2. Press the Up/Down buttons to select a tone (0-10).  
3. Press the PTT button to confirm.

**Set Call Tones**  
1. Press the Menu button until "VOC" appears.  
2. Press the Up/Down buttons to select a tone (0-10).  
3. Press the PTT button to confirm.

**Set Call Tones**  
1. Press the Menu button until "VOC" appears.  
2. Press the Up/Down buttons to select a tone (0-10).  
3. Press the PTT button to confirm.

**Set Call Tones**  
1. Press the Menu button until "VOC" appears.  
2. Press the Up/Down buttons to select a tone (0-10).  
3. Press the PTT button to confirm.

**Set Call Tones**  
1. Press the Menu button until "VOC" appears.  
2. Press the Up/Down buttons to select a tone (0-10).  
3. Press the PTT button to confirm.

**Set Call Tones**  
1. Press the Menu button until "VOC" appears.  
2. Press the Up/Down buttons to select a tone (0-10).  
3. Press the PTT button to confirm.

**Set Call Tones**  
1. Press the Menu button until "VOC" appears.  
2. Press the Up/Down buttons to select a tone (0-10).  
3. Press the PTT button to confirm.

**Set Call Tones**  
1. Press the Menu button until "VOC" appears.  
2. Press the Up/Down buttons to select a tone (0-10).  
3. Press the PTT button to confirm.

**Set Call Tones**  
1. Press the Menu button until "VOC" appears.  
2. Press the Up/Down buttons to select a tone (0-10).  
3. Press the PTT button to confirm.

**Set Call Tones**  
1. Press the Menu button until "VOC" appears.  
2. Press the Up/Down buttons to select a tone (0-10).  
3. Press the PTT button to confirm.

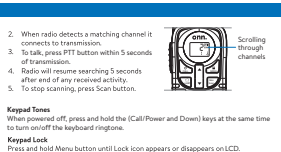
**Set Call Tones**  
1. Press the Menu button until "VOC" appears.  
2. Press the Up/Down buttons to select a tone (0-10).  
3. Press the PTT button to confirm.

**Set Call Tones**  
1. Press the Menu button until "VOC" appears.  
2. Press the Up/Down buttons to select a tone (0-10).  
3. Press the PTT button to confirm.

**Set Call Tones**  
1. Press the Menu button until "VOC" appears.  
2. Press the Up/Down buttons to select a tone (0-10).  
3. Press the PTT button to confirm.

**Set Call Tones**  
1. Press the Menu button until "VOC" appears.  
2. Press the Up/Down buttons to select a tone (0-10).  
3. Press the PTT button to confirm.

**Set Call Tones**  
1. Press the Menu button until "VOC" appears.  
2. Press the Up/Down buttons to select a tone (0-10).  
3. Press the PTT button to confirm.



**Call Tones**  
1. Press the PTT button to confirm.  
2. Use the Up/Down buttons to select a tone (0-10).  
Note: 0 turns off Call Tones and Call Function.

**VOC (Voice-Operated Transmission)**  
0: OFF  
1: Low (noisy environments)  
2: Medium (most environments)  
3: High (quiet environments)

**2CH Dual Watch (Dual Channel Monitor)**  
1. Press the Menu button until "VOC" appears.  
2. Press the Up/Down buttons to select a channel (1-22).  
3. Press the PTT button to confirm.

**Set Call Tones**  
1. Press the Menu button until "VOC" appears.  
2. Press the Up/Down buttons to select a tone (0-10).  
3. Press the PTT button to confirm.

**Set Call Tones**  
1. Press the Menu button until "VOC" appears.  
2. Press the Up/Down buttons to select a tone (0-10).  
3. Press the PTT button to confirm.

**Set Call Tones**  
1. Press the Menu button until "VOC" appears.  
2. Press the Up/Down buttons to select a tone (0-10).  
3. Press the PTT button to confirm.

**Set Call Tones**  
1. Press the Menu button until "VOC" appears.  
2. Press the Up/Down buttons to select a tone (0-10).  
3. Press the PTT button to confirm.

**Set Call Tones**  
1. Press the Menu button until "VOC" appears.  
2. Press the Up/Down buttons to select a tone (0-10).  
3. Press the PTT button to confirm.

**Set Call Tones**  
1. Press the Menu button until "VOC" appears.  
2. Press the Up/Down buttons to select a tone (0-10).  
3. Press the PTT button to confirm.

**Set Call Tones**  
1. Press the Menu button until "VOC" appears.  
2. Press the Up/Down buttons to select a tone (0-10).  
3. Press the PTT button to confirm.

**Set Call Tones**  
1. Press the Menu button until "VOC" appears.  
2. Press the Up/Down buttons to select a tone (0-10).  
3. Press the PTT button to confirm.

**Set Call Tones**  
1. Press the Menu button until "VOC" appears.  
2. Press the Up/Down buttons to select a tone (0-10).  
3. Press the PTT button to confirm.

**Set Call Tones**  
1. Press the Menu button until "VOC" appears.  
2. Press the Up/Down buttons to select a tone (0-10).  
3. Press the PTT button to confirm.

**Set Call Tones**  
1. Press the Menu button until "VOC" appears.  
2. Press the Up/Down buttons to select a tone (0-10).  
3. Press the PTT button to confirm.

**Set Call Tones**  
1. Press the Menu button until "VOC" appears.  
2. Press the Up/Down buttons to select a tone (0-10).  
3. Press the PTT button to confirm.

**Set Call Tones**  
1. Press the Menu button until "VOC" appears.  
2. Press the Up/Down buttons to select a tone (0-10).  
3. Press the PTT button to confirm.

**Set Call Tones**  
1. Press the Menu button until "VOC" appears.  
2. Press the Up/Down buttons to select a tone (0-10).  
3. Press the PTT button to confirm.

**Set Call Tones**  
1. Press the Menu button until "VOC" appears.  
2. Press the Up/Down buttons to select a tone (0-10).  
3. Press the PTT button to confirm.

**Set Call Tones**  
1. Press the Menu button until "VOC" appears.  
2. Press the Up/Down buttons to select a tone (0-10).  
3. Press the PTT button to confirm.

**Set Call Tones**  
1. Press the Menu button until "VOC" appears.  
2. Press the Up/Down buttons to select a tone (0-10).  
3. Press the PTT button to confirm.

**Set Call Tones**  
1. Press the Menu button until "VOC" appears.  
2. Press the Up/Down buttons to select a tone (0-10).  
3. Press the PTT button to confirm.

**Set Call Tones**  
1. Press the Menu button until "VOC" appears.  
2. Press the Up/Down buttons to select a tone (0-10).  
3. Press the PTT button to confirm.

**Set Call Tones**  
1. Press the Menu button until "VOC" appears.  
2. Press the Up/Down buttons to select a tone (0-10).  
3. Press the PTT button to confirm.

**Set Call Tones**  
1. Press the Menu button until "VOC" appears.  
2. Press the Up/Down buttons to select a tone (0-10).  
3. Press the PTT button to confirm.

**Set Call Tones**  
1. Press the Menu button until "VOC" appears.  
2. Press the Up/Down buttons to select a tone (0-10).  
3. Press the PTT button to confirm.

**Set Call Tones**  
1. Press the Menu button until "VOC" appears.  
2. Press the Up/Down buttons to select a tone (0-10).  
3. Press the PTT button to confirm.

**Set Call Tones**  
1. Press the Menu button until "VOC" appears.  
2. Press the Up/Down buttons to select a tone (0-10).  
3. Press the PTT button to confirm.

**Set Call Tones**  
1. Press the Menu button until "VOC" appears.  
2. Press the Up/Down buttons to select a tone (0-10).  
3. Press the PTT button to confirm.

**Set Call Tones**  
1. Press the Menu button until "VOC" appears.  
2. Press the Up/Down buttons to select a tone (0-10).  
3. Press the PTT button to confirm.

8

9

10

11

12

13

14

15

16

17

18

19

20

21

22

23

24

25

26

27

28

29

30

31

32