

ERP机型: PLA3542Q-GL-SMT00030A-V1 ERP P/N:

描述: 安装操作说明: PLA3542Q/PGA387,STM000,REV.B,160x80mm,80G 书纸, 双面单黑印刷,需折页 (十字折) ROHS2.0,REACH,POPs,PAHS,PROP65



成型尺寸: 80x40mm

K

Die Line

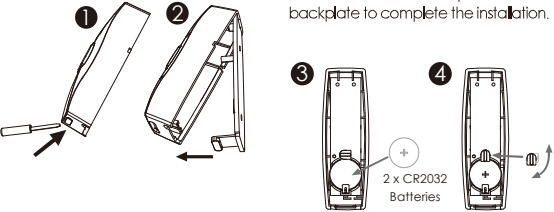
Designed : Walter

Date : 2022-05-07

LOCKLY GUARD
WWW.LOCKLYPRO.COM

Lockly Guard Wireless Exit Button is based on bidirectional RF433.92MHz and Lockly 2.0 proprietary encryption, providing communication reliability, stability, and better security. It operates with 2 x CR2032 batteries which last up to 12 months. It is quick and very easy to install and can be mounted anywhere. When using for the first time, please refer to the following steps to install and pair.

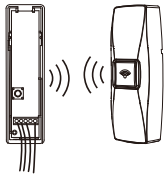
1. Press buckle button to remove the backplate cover.
2. Insert 2 x CR2032 batteries (included). Pay attention to +/- polarity, with the positive side facing up. Secure by turning battery holder clockwise. Return and buckle the front panel to the backplate to complete the installation.



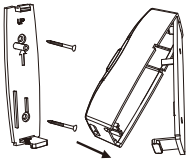
WIRELESS EXIT BUTTON (PGA387)
Installation & User Manual

Press the button.

3. IMPORTANT: Wireless Exit Button will attempt pairing within 3 minutes after pressing the button or it will exit the pairing mode if no action is taken. If you want to attempt pairing again, please take out and reinsert the batteries, then short press the button to start pairing. Refer to the manual of the smart lock on how to enter pairing mode and ensure pairing is successful before mounting to your desired location.



4. Remove the protective film adhesive from the backplate and mount on desired location (near the exit door). You can also use screws to secure the backplate.



FCC Warning:

This device complies with Part 15 of the FCC Rules. Operation is subject to the following two conditions: (1) This device may not cause harmful interference, and (2) this device must accept any interference received, including interference that may cause undesired operation.

NOTE 1: This equipment has been tested and found to comply with the limits for a Class B digital device, pursuant to part 15 of the FCC Rules. These limits are designed to provide reasonable protection against harmful interference in a residential installation. This equipment generates, uses and can radiate radio frequency energy and, if not installed and used in accordance with the instructions, may cause harmful interference to radio communications. However, there is no guarantee that interference will not occur in a particular installation. If this equipment does cause harmful interference to radio or television reception, which can be determined by turning the equipment off and on, the user is encouraged to try to correct the interference by one or more of the following measures:

- Reorient or relocate the receiving antenna.
- Increase the separation between the equipment and receiver.
- Connect the equipment into an outlet on a circuit different from that to which the receiver is connected.
- Consult the dealer or an experienced radio/TV technician for help.

NOTE 2: Any changes or modifications to this unit not expressly approved by the party responsible for compliance could void the user's authority to operate the equipment.

FCC Radiation Exposure Statement

The Secure Link Wi-Fi Hub complies with FCC radiation exposure limits set forth for an uncontrolled environment. It should be installed and operated with minimum distance 20cm between the radiator & your body.

IC WARNING

This device contains licence-exempt transmitter(s) that comply with Innovation, Science and Economic Development Canada's licence-exempt RSS(s).

Operation is subject to the following two conditions:

- (1) This device may not cause interference.
- (2) This device must accept any interference, including interference that may cause undesired operation of the device.

L'émetteur/récepteur exempt de licence contenu dans le présent appareil est conforme aux CNR d'Innovation, Sciences et Développement économique Canada applicables aux appareils radio exempts de licence. L'exploitation est autorisée aux deux conditions suivantes:

1. L'appareil ne doit pas produire de brouillage;
2. L'appareil doit accepter tout brouillage radioélectrique subi, même si le brouillage est susceptible d'en compromettre le fonctionnement.

IC Radiation Exposure Statement

This equipment meets the exemption from the routine evaluation limits in section 2.5 of RSS-102. It should be installed and operated with a minimum distance of 20cm between the radiator and any part of your body.

Cet équipement est conforme à l'exemption des limites d'évaluation habituelle de la section 2.5 de la norme RSS-102. Il doit être installé et utilisé à une distance minimale de 20 cm entre le radiateur et toute partie de votre corps.



WARNING: This product can expose you to chemicals including Lead, which is known to the State of California to cause cancer. For more information go to www.P65Warnings.ca.gov.