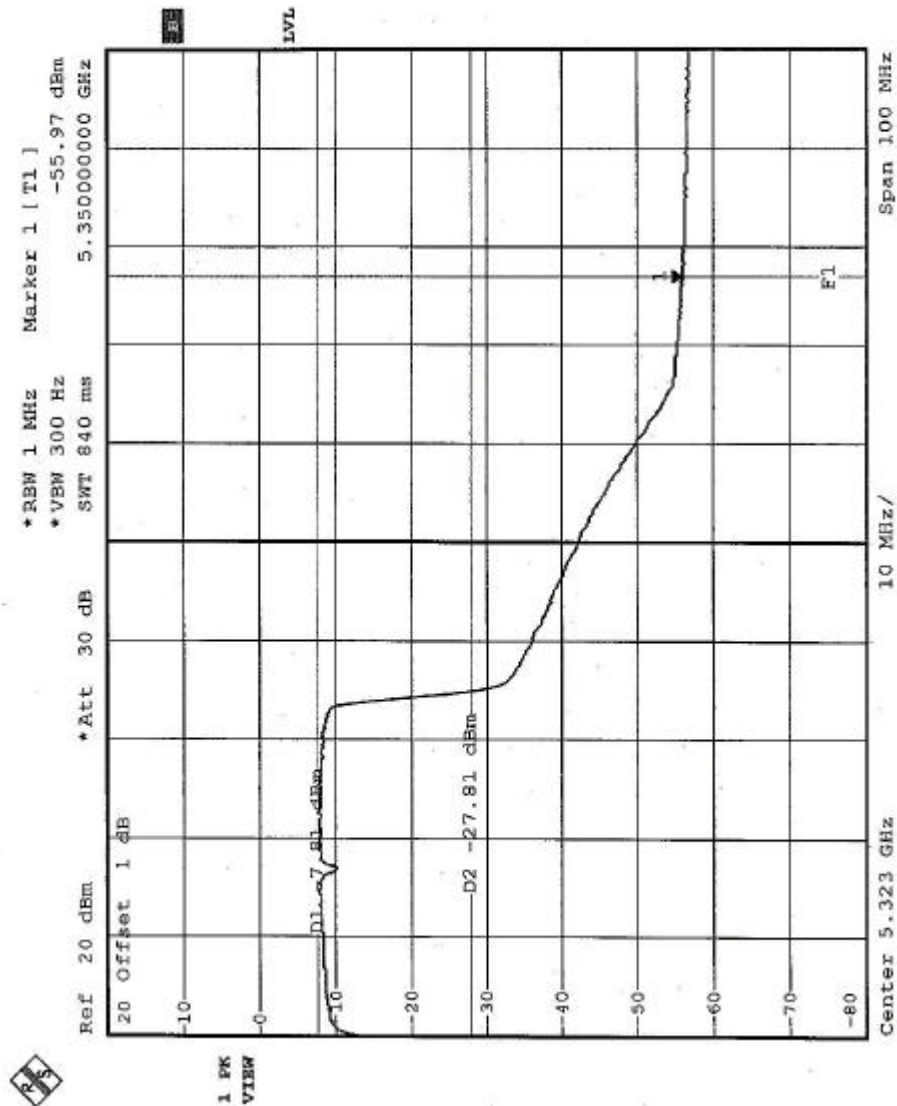


Turbo Mode: Channel 3 (5290 MHz)

The band edge emission plot on the following page shows 48.16dBc (Average) between carrier maximum power and local maximum emission in restrict band. The emission of carrier strength list in the test result of channel 8 (turbo mode) is 79.0dBuV/m, so the maximum field strength in restrict band is $79.0 - 48.16 = 30.84$ dBuV/m which is under 54dBuV/m limit.





5.8 ANTENNA REQUIREMENT

5.8.1 STANDARD APPLICABLE

For intentional device, according to FCC 47 CFR Section 15.203, an intentional radiator shall be designed to ensure that no antenna other than that furnished by the responsible party shall be used with the device.

And according to FCC 47 CFR Section 15.407(a), if transmitting antennas of directional gain greater than 6dBi are used, the power shall be reduced by the amount in dB that the directional gain of the antenna exceeds 6dBi.

5.8.2 ANTENNA CONNECTED CONSTRUCTION

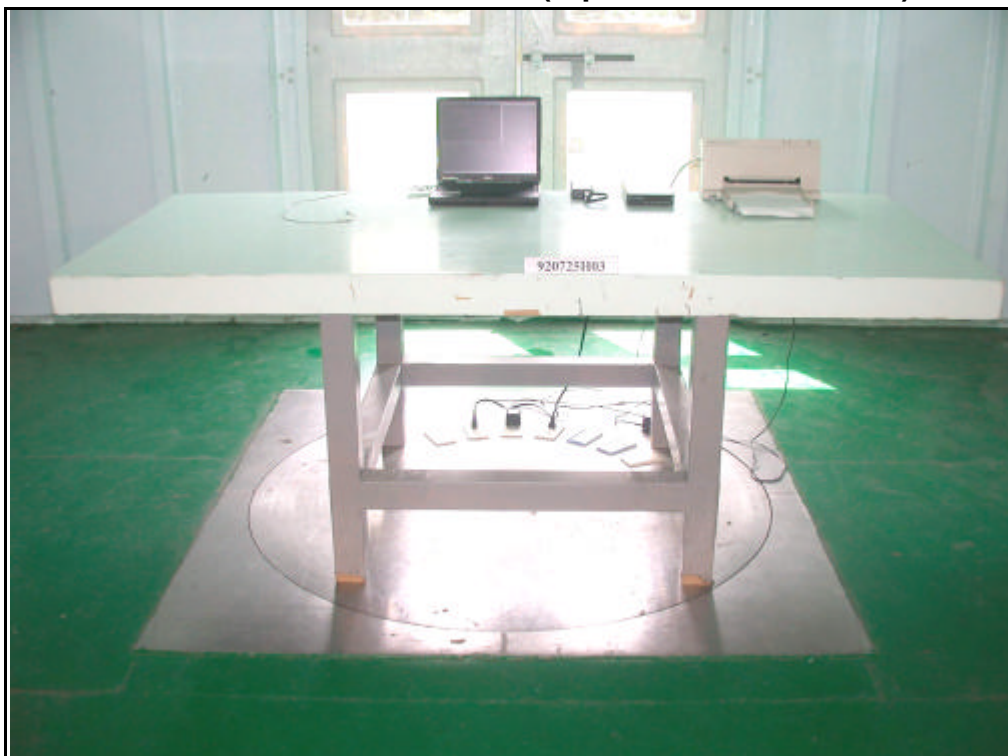
The antenna used in this product is PIFA Antenna with MMCX connector. The maximum Gain of the antenna is -0.11dBi .

6. PHOTOGRAPHS OF THE TEST CONFIGURATION CONDUCTED EMISSION TEST



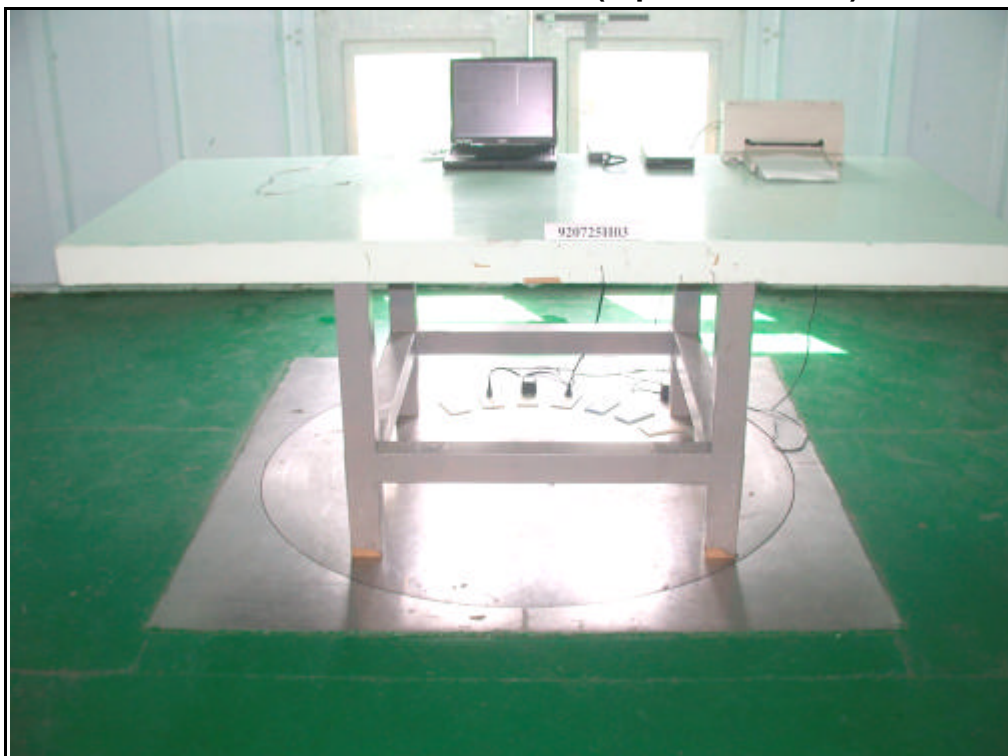


RADIATED EMISSION TEST (Apollo MMCX Antenna)



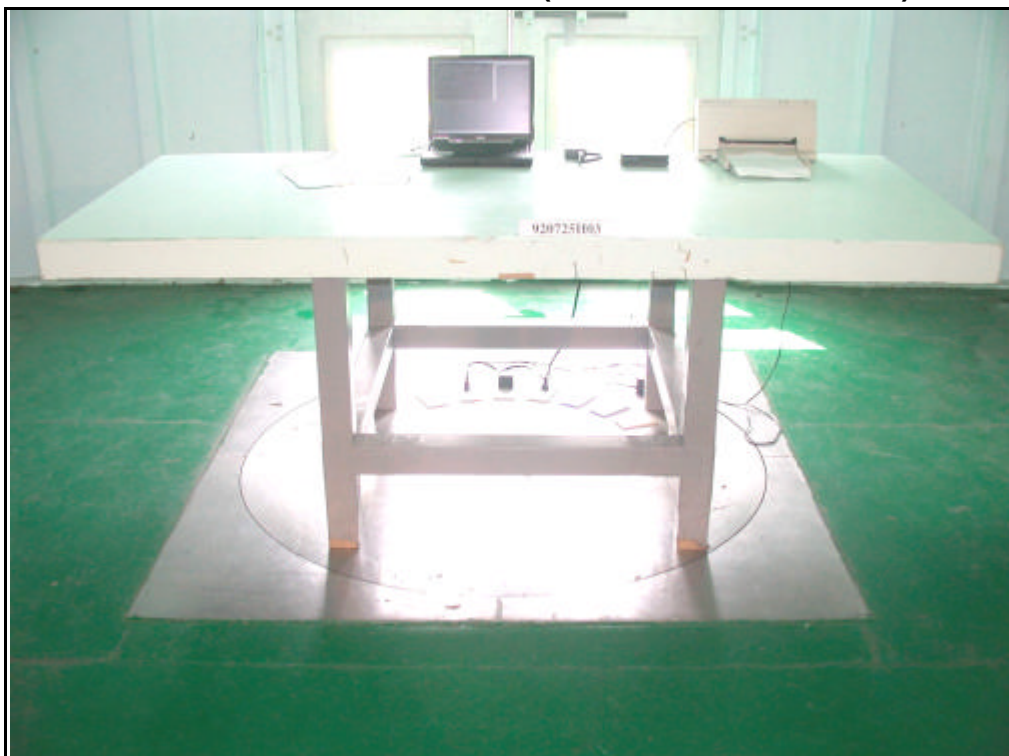


RADIATED EMISSION TEST (Apollo Antenna)





RADIATED EMISSION TEST (Athena MMCX Antenna)







7. INFORMATION ON THE TESTING LABORATORIES

We, ADT Corp., were founded in 1988 to provide our best service in EMC and Safety consultation. Our laboratories are accredited and approved by the following approval agencies according to ISO/IEC 17025, Guide 25 or EN 45001:

USA	FCC, NVLAP, UL
Germany	TUV Rheinland
Japan	VCCI
New Zealand	MoC
Norway	NEMKO
R.O.C.	BSMI, DGT, CNLA

Copies of accreditation certificates of our laboratories obtained from approval agencies can be downloaded from our web site:
www.adt.com.tw/index.5/phtml.

If you have any comments, please feel free to contact us at the following:

Lin Kou EMC Lab:

Tel: 886-2-26052180

Fax: 886-2-26052943

Hsin Chu EMC Lab:

Tel: 886-35-935343

Fax: 886-35-935342

Lin Kou Safety Lab:

Tel: 886-2-26093195

Fax: 886-2-26093184

Lin Kou RF&Telecom Lab

Tel: 886-3-3270910

Fax: 886-3-3270892

Email: service@mail.adt.com.tw

Web Site: www.adt.com.tw

The address and road map of all our labs can be found in our web site also.