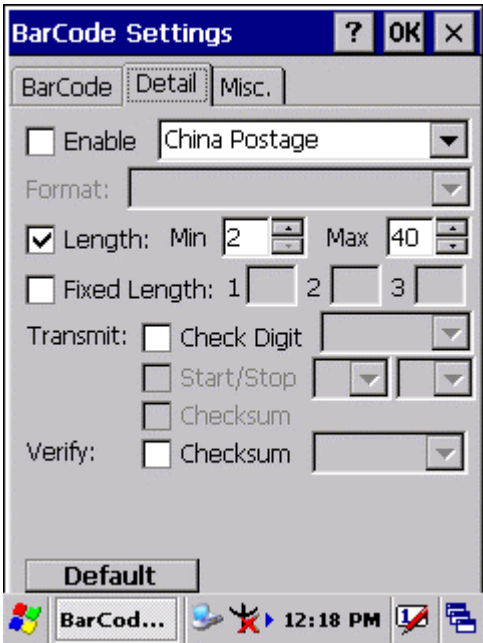
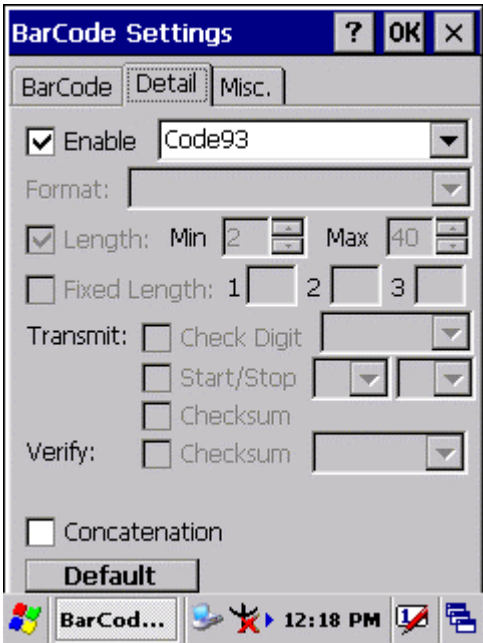


3.2.3.3 China Postage



<input type="checkbox"/> Enable	<input checked="" type="checkbox"/>	Enable China Postage
	<input type="checkbox"/>	Disable China Postage
<input type="checkbox"/> Length	<input checked="" type="checkbox"/>	Min Length can be set from 2 to 80 Max Length can be set from 2 to 80
	<input type="checkbox"/>	
<input type="checkbox"/> Fixed Length	<input checked="" type="checkbox"/>	Fixed Length 1 2-80 Fixed Length 2 2-80 Fixed Length 3 2-80
	<input type="checkbox"/>	
<input type="checkbox"/> Check Digit	<input checked="" type="checkbox"/>	Check Digit transmit
	<input type="checkbox"/>	Check Digit doesn't transmit
Verify	<input checked="" type="checkbox"/>	Enabled
<input type="checkbox"/> Checksum	<input type="checkbox"/>	Disabled
Default		Tap the " Default " tab to return back to default setting

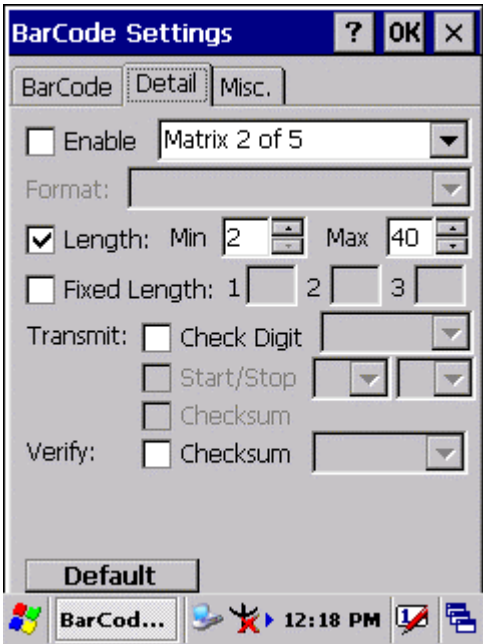
3.2.3.4 Code93



Code93 is a variable length, continuous symbology that uses four element widths.

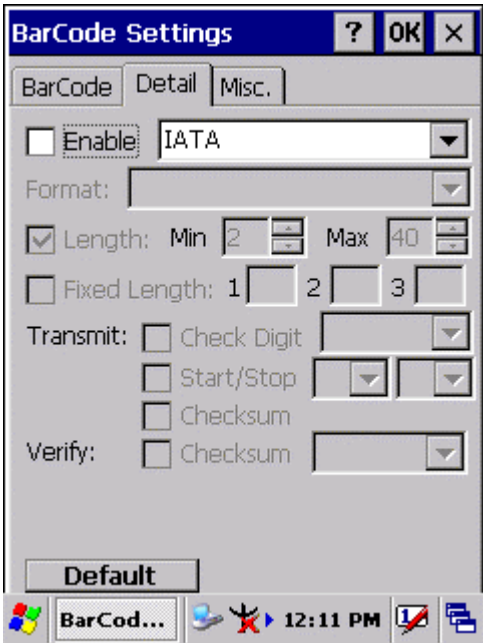
<input type="checkbox"/> Enable	<input checked="" type="checkbox"/>	Enable Code93
	<input type="checkbox"/>	Disable Code93
<input type="checkbox"/> Concatenation	<input checked="" type="checkbox"/>	Enable Concatenation
	<input type="checkbox"/>	Disable Concatenation
Default		Tap the “ Default ” tab to return back to default setting

3.2.3.5 Matrix 2 of 5



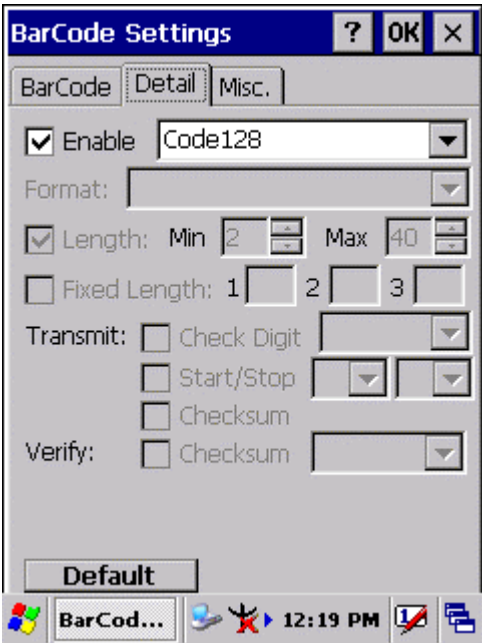
<input type="checkbox"/> Enable	<input checked="" type="checkbox"/>	Enable Matrix 2 of 5
	<input type="checkbox"/>	Disable Matrix 2 of 5
<input type="checkbox"/> Length	<input checked="" type="checkbox"/>	Min Length can be set from 2 to 80 Max Length can be set from 2 to 80
	<input type="checkbox"/>	
<input type="checkbox"/> Fixed Length	<input checked="" type="checkbox"/>	Fixed Length 1 2-80 Fixed Length 2 2-80 Fixed Length 3 2-80
	<input type="checkbox"/>	
<input type="checkbox"/> Check Digit	<input checked="" type="checkbox"/>	Check Digit transmit
	<input type="checkbox"/>	Check Digit doesn't transmit
Verify	<input checked="" type="checkbox"/>	Enabled
<input type="checkbox"/> Checksum	<input type="checkbox"/>	Disabled
Default		Tap the “ Default ” tab to return back to default setting

3.2.3.6 IATA



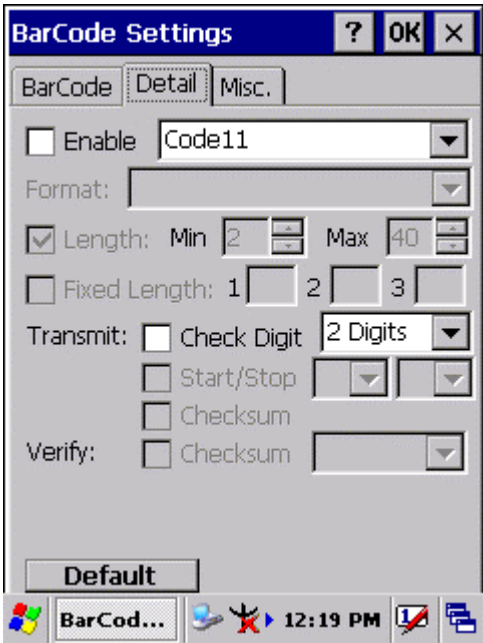
<input type="checkbox"/> Enable	<input checked="" type="checkbox"/>	Enable IATA
	<input type="checkbox"/>	Disable IATA
Default		Tap the “ Default ” tab to return back to default setting

3.2.3.7 Code128



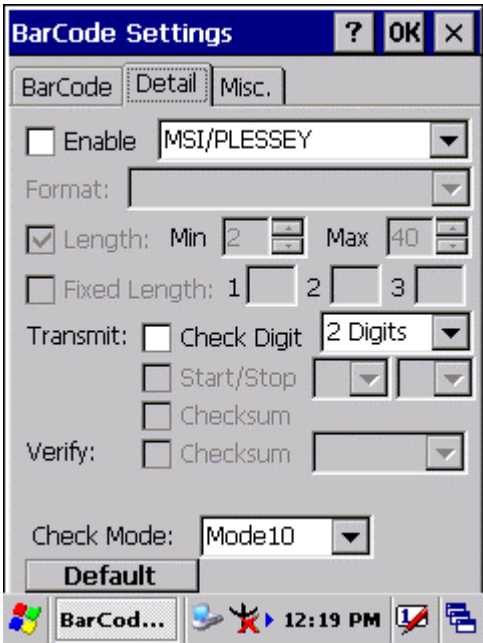
<input type="checkbox"/> Enable	<input checked="" type="checkbox"/>	Enable Code128
	<input type="checkbox"/>	Disable Code128
Default		Tap the “ Default ” tab to return back to default setting

3.2.3.7 Code11



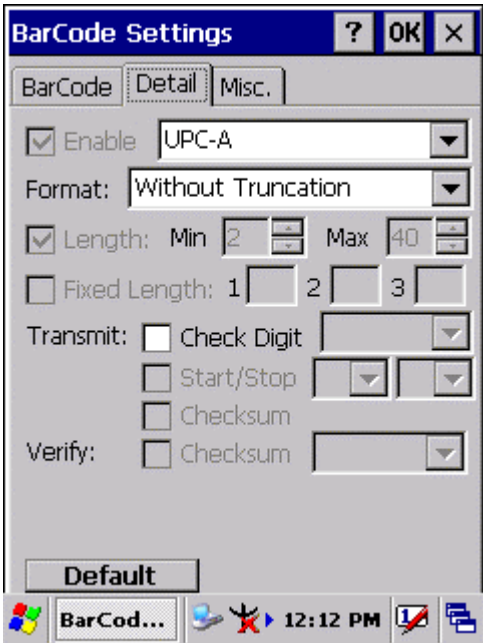
<input type="checkbox"/> Enable	<input checked="" type="checkbox"/>	Enable Code11
	<input type="checkbox"/>	Disable Code11
<input type="checkbox"/> Check Digit	<input checked="" type="checkbox"/>	Check Digit Transmit
		Check digit verification can select “ 1 Digit ” or “ 2 Digits ”
	<input type="checkbox"/>	Check Digit doesn’t transmit
Default		Tap the “ Default ” tab to return back to default setting

3.2.3.8 MSI/PLESSEY



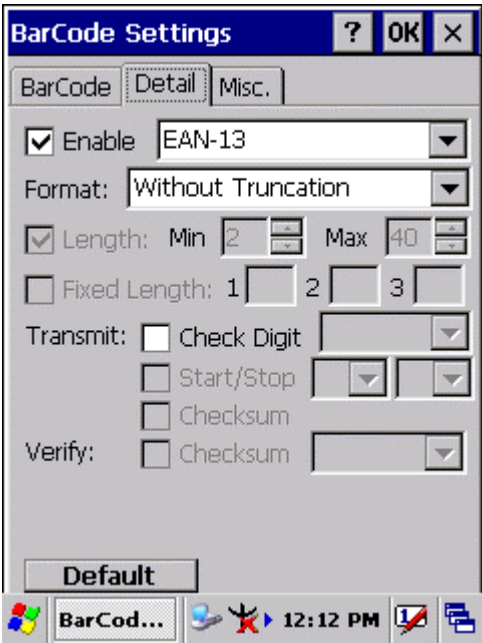
<input type="checkbox"/> Enable	<input checked="" type="checkbox"/>	Enable MSI/PLESSEY
	<input type="checkbox"/>	Disable MSI/PLESSEY
<input type="checkbox"/> Check Digit	<input checked="" type="checkbox"/>	Check Digit transmit
		Check digit verification can select “ 1 Digit ” or “ 2 Digits ”
	<input type="checkbox"/>	Check Digit doesn’t transmit
Check Mode		One of “ Mode10 ”, “ Mode10-10 ” and “ Mode11-10 ” can be selected from the pull-down list.
Default		Tap the “ Default ” tab to return back to default setting

3.2.3.9 UPC-A



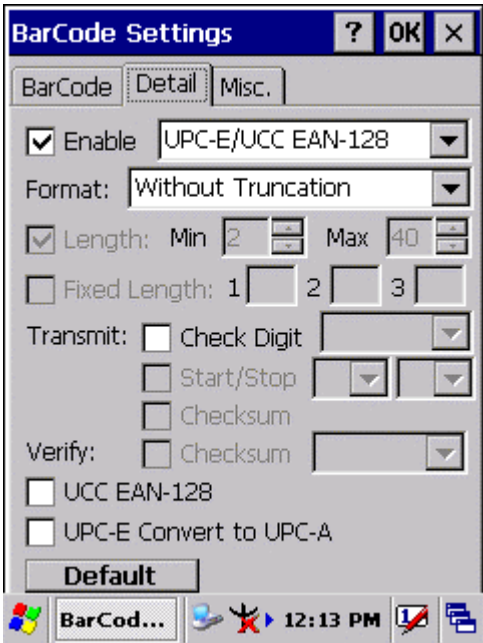
<input type="checkbox"/> Enable	<input checked="" type="checkbox"/>	Enable UPC-A
	<input type="checkbox"/>	Disable UPC-A
Format		Only one of the “ Without Truncation ”, “ Truncate Leading Zero ”, “ Truncate Leading Digit ” and “ Truncate Leading Zero and Digit ” can be selected from the pull-down list.
Check Digit	<input checked="" type="checkbox"/>	Check Digit transmit
	<input type="checkbox"/>	Check Digit doesn’t transmit
Default		Tap the “ Default ” tab to return back to default setting

3.2.3.10 EAN-13



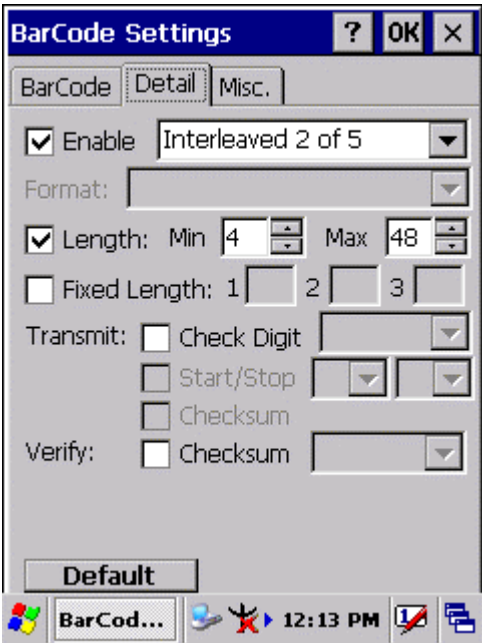
<input type="checkbox"/> Enable	<input checked="" type="checkbox"/>	Enable EAN-13
	<input type="checkbox"/>	Disable EAN-13
Format		Only one of the “ Without Truncation ”, “ Truncate Leading Zero ”, “ Truncate Leading Digit ” and “ Truncate Leading Zero and Digit ” can be selected from the pull-down list.
Check Digit	<input checked="" type="checkbox"/>	Check Digit transmit
	<input type="checkbox"/>	Check Digit doesn’t transmit
Default		Tap the “ Default ” tab to return back to default setting

3.2.3.11 UPC-E/UCC EAN-128



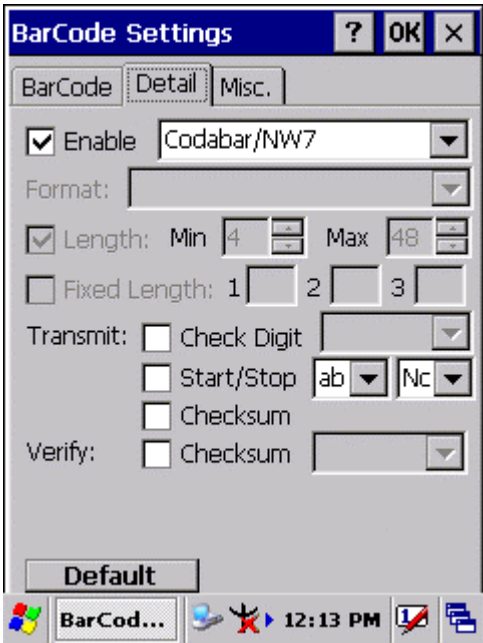
<input type="checkbox"/> Enable	<input checked="" type="checkbox"/>	Enable UPC-E/UCC EAN-128
	<input type="checkbox"/>	Disable UPC-E/UCC EAN-128
Format		Only one of the “ Without Truncation ” and “ Truncate Leading Zero ” can be selected from the pull-down list.
Check Digit	<input checked="" type="checkbox"/>	Check Digit transmit
	<input type="checkbox"/>	Check Digit doesn’t transmit
Enable UCC EAN-128	<input checked="" type="checkbox"/>	Enable UCC EAN-128
	<input type="checkbox"/>	Disable UCC EAN-128
Enable UPC-E	<input checked="" type="checkbox"/>	Enable UPC-E Convert to UPC-A
Convert to UPC-A	<input type="checkbox"/>	Disable UPC-E Convert to UPC-A
Default		Tap the “ Default ” tab to return back to default setting

3.2.3.12 Interleaved 2 of 5



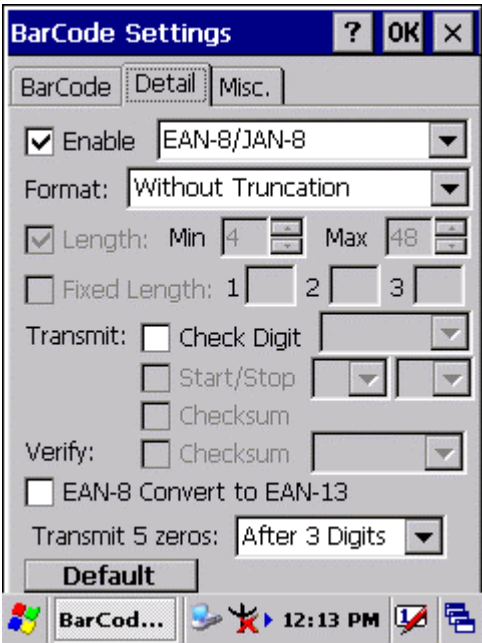
<input type="checkbox"/> Enable	<input checked="" type="checkbox"/>	Enable Interleaved 2 of 5
	<input type="checkbox"/>	Disable Interleaved 2 of 5
<input type="checkbox"/> Length	<input checked="" type="checkbox"/>	Min Length can be set from 2 to 96 Max Length can be set from 2 to 96
	<input type="checkbox"/>	
<input type="checkbox"/> Fixed Length	<input checked="" type="checkbox"/>	Fixed Length 1 2-96 Fixed Length 2 2-96 Fixed Length 3 2-96
	<input type="checkbox"/>	
<input type="checkbox"/> Check Digit	<input checked="" type="checkbox"/>	Check Digit transmit
	<input type="checkbox"/>	Check Digit doesn't transmit
Verify	<input checked="" type="checkbox"/>	Enabled
<input type="checkbox"/> Checksum	<input type="checkbox"/>	Disabled
Default		Tap the “ Default ” tab to return back to default setting

3.2.3.13 Codabar/NW7



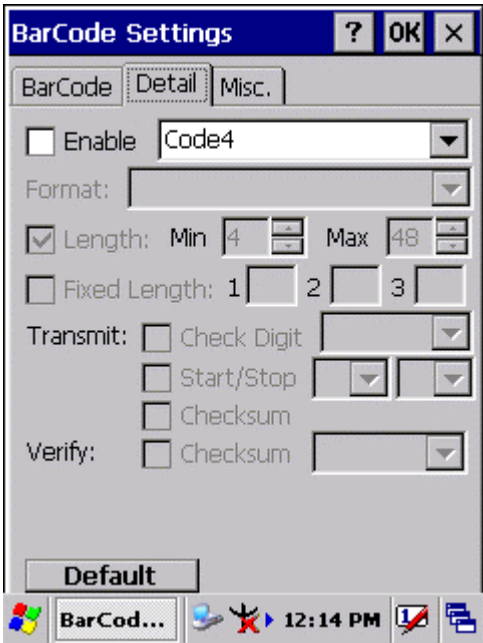
<input type="checkbox"/> Enable	<input checked="" type="checkbox"/>	Enable Codabar/NW7
	<input type="checkbox"/>	Disable Codabar/NW7
<input type="checkbox"/> Start/Stop	<input checked="" type="checkbox"/>	Start/Stop transmit
	<input type="checkbox"/>	Start/Stop doesn't transmit
		?????
<input type="checkbox"/> Checksum	<input checked="" type="checkbox"/>	Checksum transmit
	<input type="checkbox"/>	Checksum doesn't transmit
Verify	<input checked="" type="checkbox"/>	Enabled
<input type="checkbox"/> Checksum	<input type="checkbox"/>	Disabled
Default		Tap the “ Default ” tab to return back to default setting

3.2.3.14 EAN-8/JAN-8



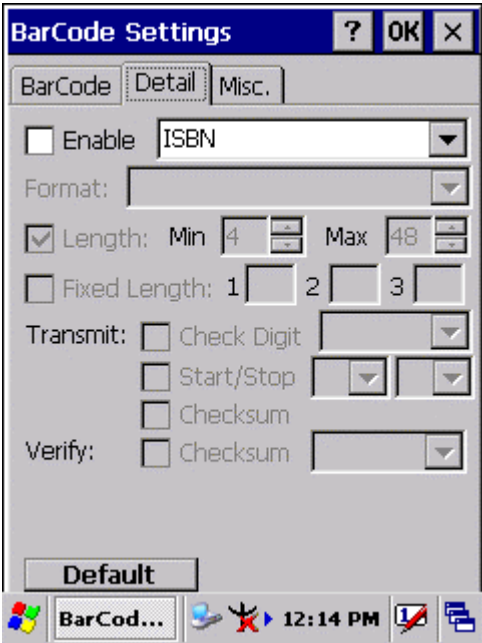
<input type="checkbox"/> Enable	<input checked="" type="checkbox"/>	Enable EAN-8/JAN-8
	<input type="checkbox"/>	Disable EAN-8/JAN-8
Format		Only one format of “ Without Truncation ” and “ Truncate Leading Zero ” can be selected from the pull-down list.
<input type="checkbox"/> Check Digit	<input checked="" type="checkbox"/>	Check Digit transmit
	<input type="checkbox"/>	Check Digit doesn’t transmit
Verify	<input checked="" type="checkbox"/>	Enabled
<input type="checkbox"/> Checksum	<input type="checkbox"/>	Disabled
<input type="checkbox"/> Enable EAN-8	<input checked="" type="checkbox"/>	Enable EAN-8 Convert to EAN-13
Convert to EAN-13	<input type="checkbox"/>	Disable EAN-8 Convert to EAN-13
Transmit 5 zeros		One kind of “ Before BarCode ” and “ After 3 Digits ” is selected from the pull-down list.
Default		Tap the “ Default ” tab to return back to default setting

3.2.3.15 Code4



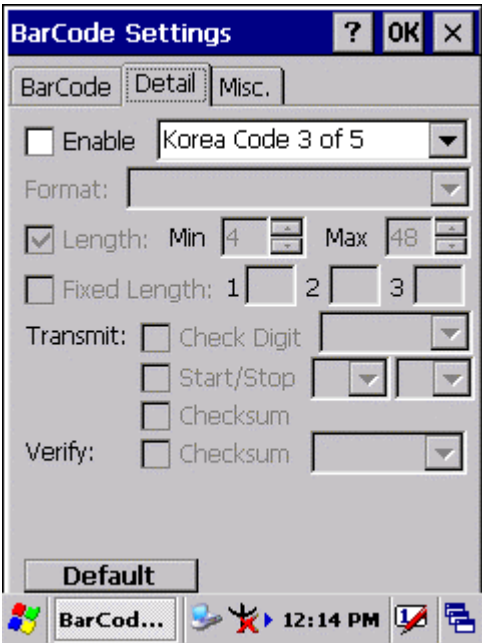
<input type="checkbox"/> Enable	<input checked="" type="checkbox"/>	Enable Code4
	<input type="checkbox"/>	Disable Code4
Default		Tap the “ Default ” tab to return back to default setting

3.2.3.16 ISBN



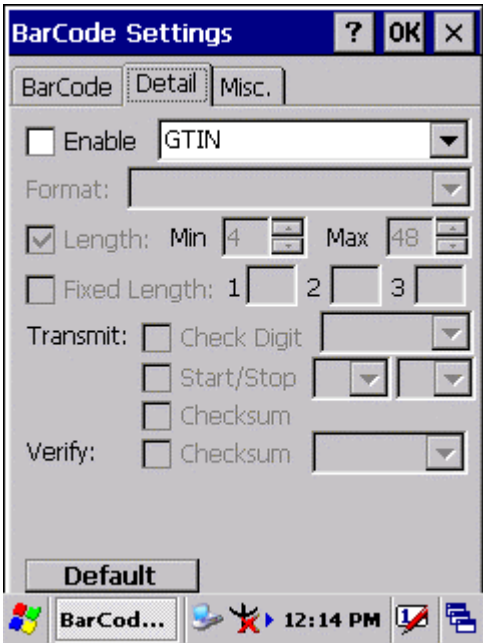
<input type="checkbox"/> Enable	<input checked="" type="checkbox"/>	Enable ISBN
	<input type="checkbox"/>	Disable ISBN
Default		Tap the “ Default ” tab to return back to default setting

3.2.3.17 Korea Code 3 of 5



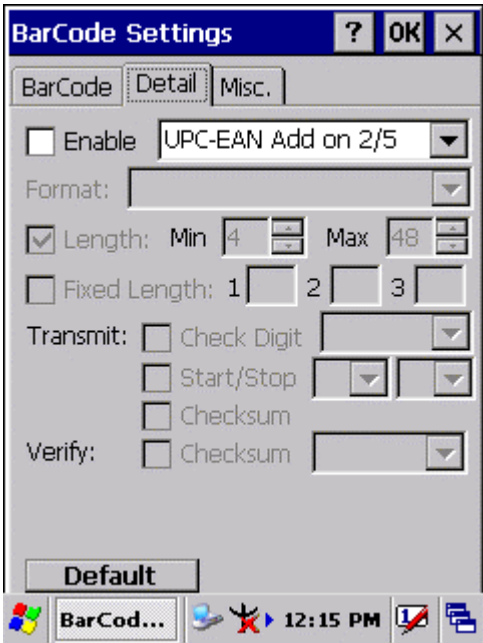
<input type="checkbox"/> Enable	<input checked="" type="checkbox"/>	Enable Korea Code 3 of 5
	<input type="checkbox"/>	Disable Korea Code 3 of 5
Default		Tap the “ Default ” tab to return back to default setting

3.2.3.18 GTIN



<input type="checkbox"/> Enable	<input checked="" type="checkbox"/>	Enable GTIN
	<input type="checkbox"/>	Disable GTIN
Default		Tap the “ Default ” tab to return back to default setting

3.2.3.19 UOC-EAN Add on 2/5



<input type="checkbox"/> Enable	<input checked="" type="checkbox"/>	Enable UPC-EAN Add on 2/5
	<input type="checkbox"/>	Disable UPC-EAN Add on 2/5
Default		Tap the “ Default ” tab to return back to default setting

3.2.4 Brightness

Table 3-3 Brightness

ICON	ITEM & FUNCTION	
Brightness	<ul style="list-style-type: none">● “Brightness Control” Applet (Figure 3-4-1) :	
	<ul style="list-style-type: none">✓ Control the LCD brightness and KEYPAD Brightness✓ Tap the “LCD brightness” Tab, and then tune the LCD brightness by tapping right-arrow & left-arrow. Can also tune the LCD brightness by pressing right-direction key or left-direction key.✓ Tap the “KEYPAD Brightness” Tab, and then tune the Keypad brightness by tapping right-arrow & left-arrow. Can also tune the Keypad brightness by pressing right-direction key or left-direction key.	
	<ul style="list-style-type: none">● “Backlight Timeout” Applet(Figure 3-4-2~ Figure 3-4-5):	
	<ul style="list-style-type: none">✓ Select one power source from the pull-down list, “ AC power” & “Battery” of Power Scheme.✓ Select the timeout duration from another pull-down list of “Turn off backlight after” Tab. < Never, 15 seconds, 30 seconds, 1 minutes, 2 minutes, 5 minutes>✓ The Backlight will be turned off after the selected timeout value✓ <input type="checkbox"/> Dim backlight after 20 seconds of idleness	
	ITEM	Function
	<input type="checkbox"/>	The brightness of backlight keep the same brightness even though system is already idle.
<input checked="" type="checkbox"/>	The brightness of backlight will change to a little dark during system idle situation after 20 seconds when the system isn’t running any action.	

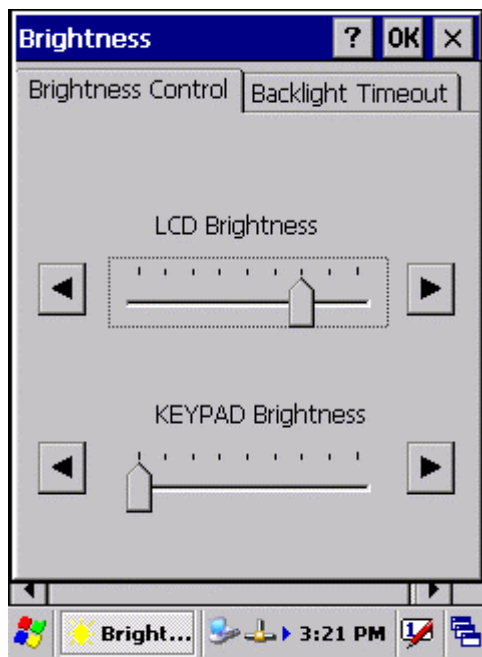


Figure 3-4-1

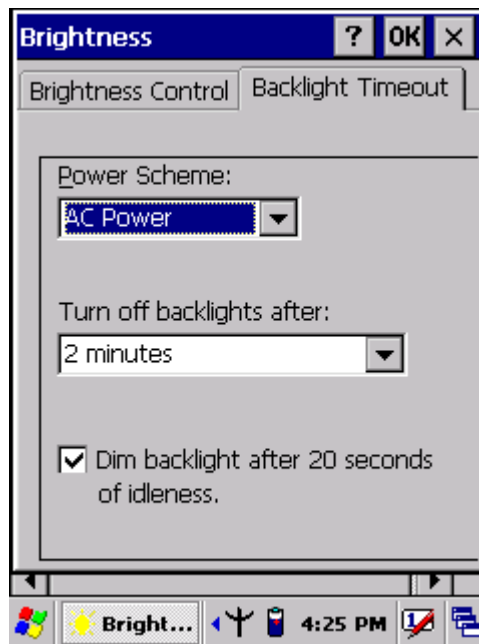


Figure 3-4-2

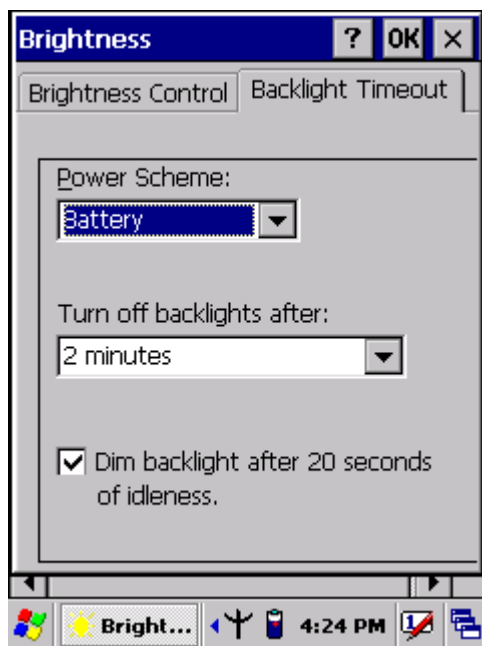


Figure 3-4-3

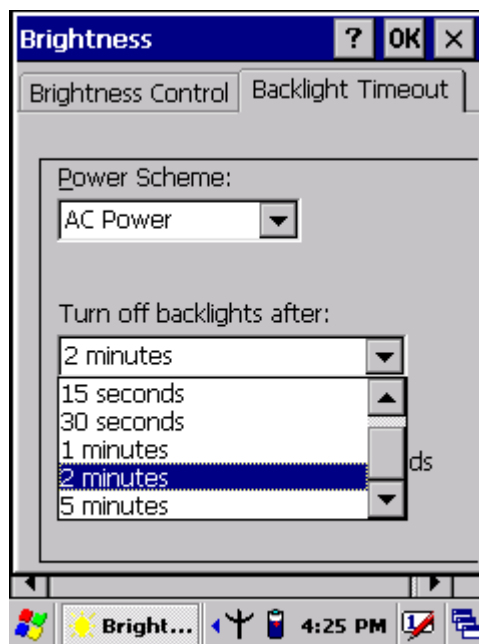


Figure 3-4-4

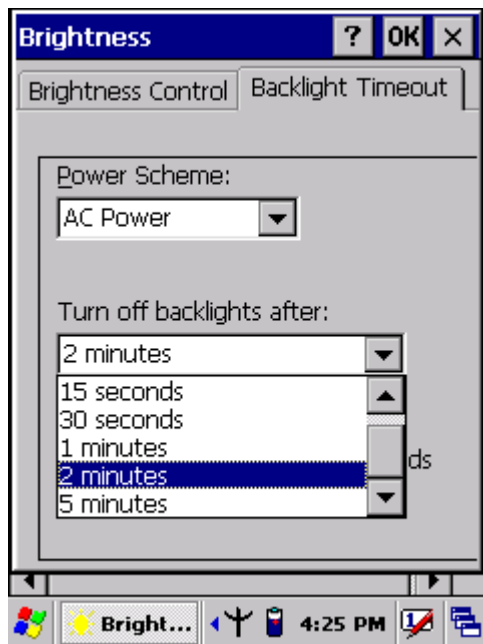


Figure 3-4-5

3.2.5 Certificates

Certificates are used by some applications for establishing trust and for secure communications.

Certificates are signed and issued by certificate authorities and are valid for a prescribed period of time. Windows CE manages multiple certificate stores.

Table 3-4 Certificates(A)

ICON	ITEM & FUNCTION
Certificates	<ul style="list-style-type: none"> • “Store” Tab (Figure 3-5-1) :
	✓ In the Stores tab, select the certificate store you wish to view or modify from the drop-down list (Figure 3-5-2).
	✓ The “Trusted Authorities” store lists the top-level certificates for authorities you trust.(Figure 3-5-2 , Figure 3-5-3)
	✓ The “My Certificates” store contains your personal certificates, which you use to identify yourself.
	✓ Intermediate certificate authorities that help establish a chain of trust are stored in the “Other Authorities” store.

Table 3-4 Certificates(B)

ICON	ITEM & FUNCTION
Certificates	<ul style="list-style-type: none"> • “Store” Tab : <ul style="list-style-type: none"> ✓ To add a certificate or associated private key to the selected store, select “Import” (Figure 3-5-4). ✓ To view more details of the selected certificate, such as the expanded name or expiration date, choose “View”. ✓ To delete the selected certificate from the store, choose “Remove”.



Figure 3-5-1



Figure 3-5-2



Figure 3-5-3

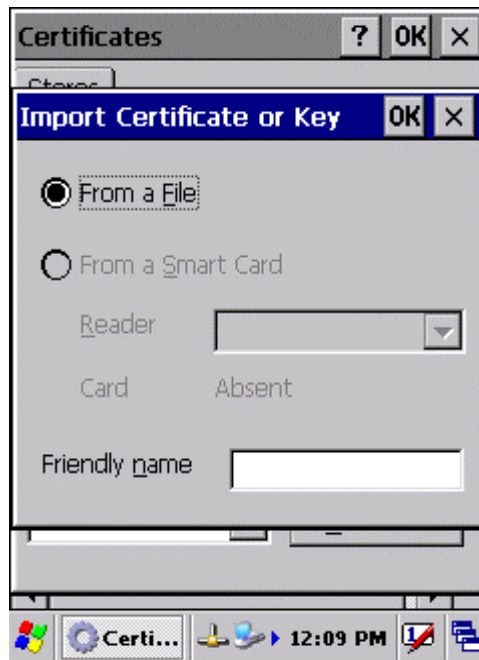


Figure 3-5-4



Figure 3-5-5

3.2.6 CPU Speed

Table 3-5 CPU Speed

ICON	ITEM & FUNCTION
CPU Speed	<ul style="list-style-type: none">• “CPU Speed” Tab :(Figure 3-6)✓ Provide the information of current CPU Speed.✓ To change the CPU Speed , select the desired CPU speed you want. < 100 MHz, 200MHz, 300MHz, 400MHz >

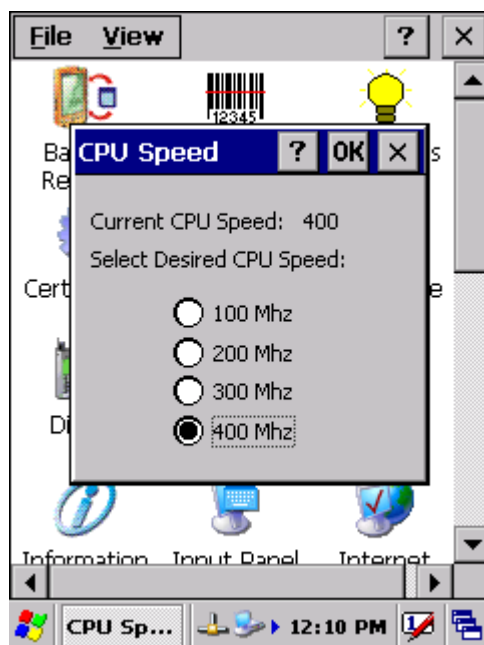


Figure 3-6

3.2.7 Date/Time

Table 3-6 Date/Time

ICON	ITEM & FUNCTION
Date/Time	<ul style="list-style-type: none">• “Date/Time” Tab : (Figure 3-6)
	<ul style="list-style-type: none">✓ Please see the detail information of 2.5.1 Setting Time and Date on P2-22

3.2.8 Dialing Properties

Table 3-7 Dialing properties(A)

ICON	ITEM & FUNCTION
Dialing Properties	<ul style="list-style-type: none">• “Dialing Properties” Tab :(Figure 3-7-1)
	<ul style="list-style-type: none">✓ In the When dialing from list, select the “Location” where you want to change settings.(Figure 3-7-2)✓ To create a new location, select “New”. Enter the name of the location, and then select “OK”.(Figure 3-7-3)✓ Enter or edit the area code and local country code as needed.✓ In Dial using, select “Tone dialing” or “Pulse dialing”. Most phone lines are tone.✓ To automatically disable call waiting, select <input type="checkbox"/> Disable call waiting by dialing” , select the appropriate number sequence in the list, or enter a new sequence. <ul style="list-style-type: none">• Editing dialing patterns (Figure 3-7-4)✓ Using the codes listed in the topic, revise the dialing patterns as needed. <p>Notes:</p> <ul style="list-style-type: none">■ If you need to use character other than the ones listed here, use manual dialing.■ Hyphens and spaces in dialing strings are ignored.■ Some modems may not respond to the following characters, even though your device lets you add them to the dial string.



Figure 3-7-1

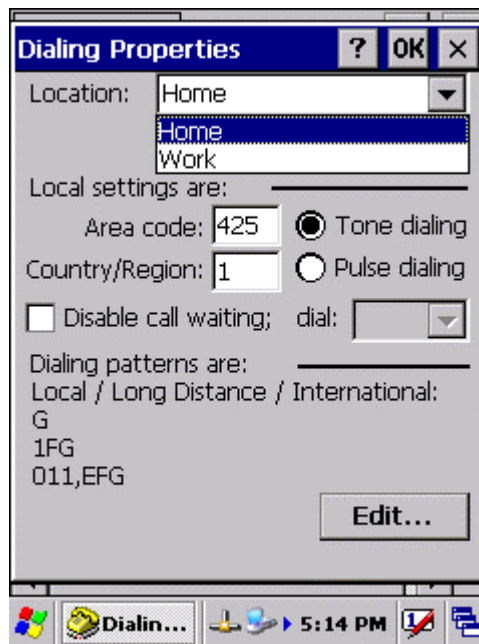


Figure 3-7-2

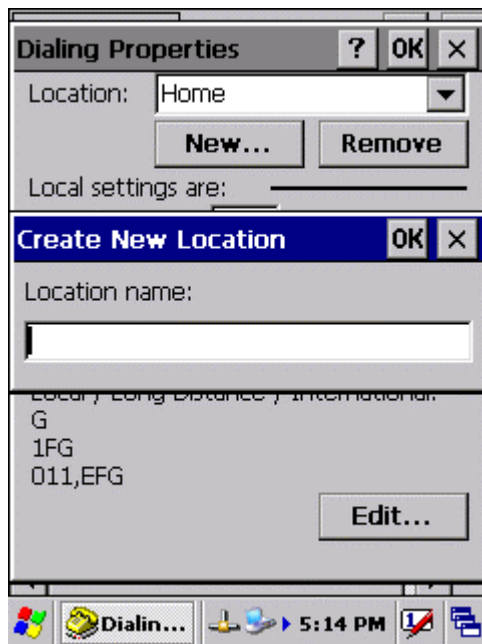


Figure 3-7-3

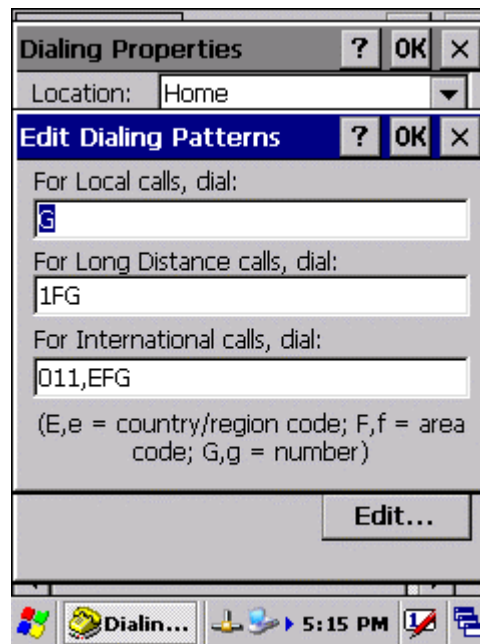


Figure 3-7-4

3.2.9 Display Properties

Table 3-8 Display properties(A)

ICON	ITEM & FUNCTION
Display	<ul style="list-style-type: none"> • “Background” Tab :(Figure 3-8-1)
	<ul style="list-style-type: none"> ✓ From the “Image” list, select an image you want as the background of the desktop.(Figure 3-8-2) ✓ To locate an image in another folder, select “Browse”.(Figure 3-8-3) ✓ To have the image cover the entire background, select “ <input type="checkbox"/> Tile image on background”
	<ul style="list-style-type: none"> • “Appearance” Tab(Figure 3-8-4)
	<ul style="list-style-type: none"> ✓ Change the color scheme :(Figure 3-8-5) <ul style="list-style-type: none"> ➤ From the” Scheme” list, select a scheme. ➤ View your choice in the preview box. If you like the scheme, select “Apply”. ✓ Create a custom color scheme: <ul style="list-style-type: none"> ➤ From the “Item” list, select a display item. ➤ From the “Basic colors” list, select a color, and select “OK”. ➤ View your color selection(s) in the Preview box. ➤ To save the scheme, select “Save”. ➤ In the “Save this color scheme as” box, enter a name for the scheme, and select “OK”. ➤ Select “Apply”.

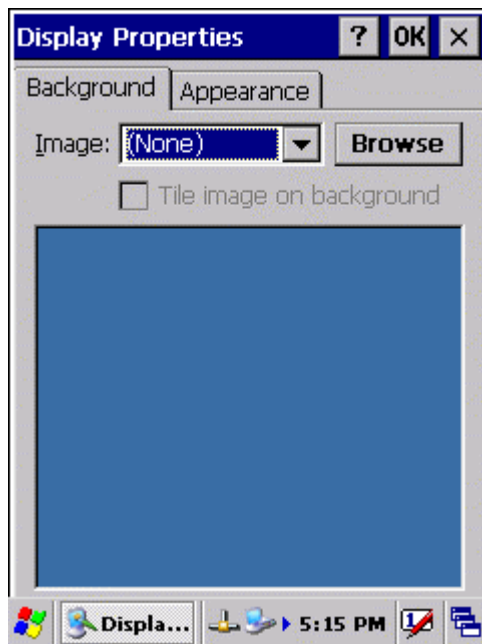


Figure 3-8-1

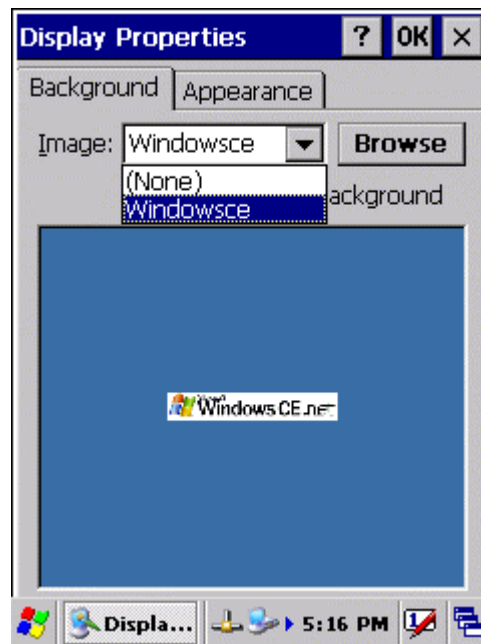


Figure 3-8-2

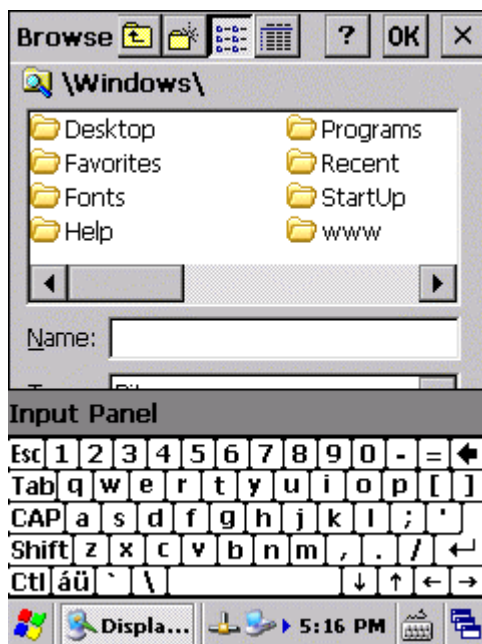


Figure 3-8-3

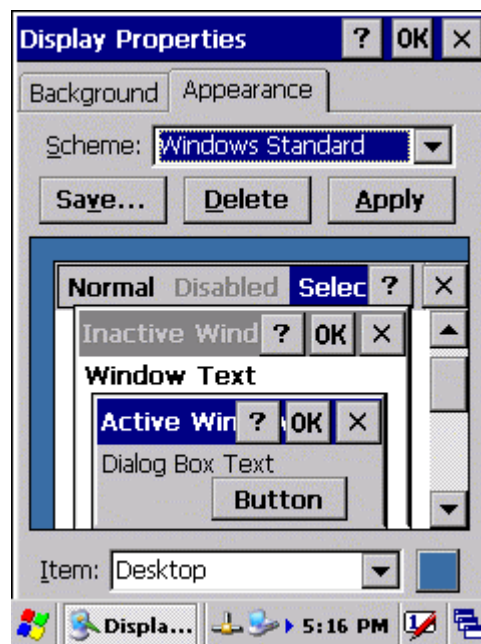


Figure 3-8-4

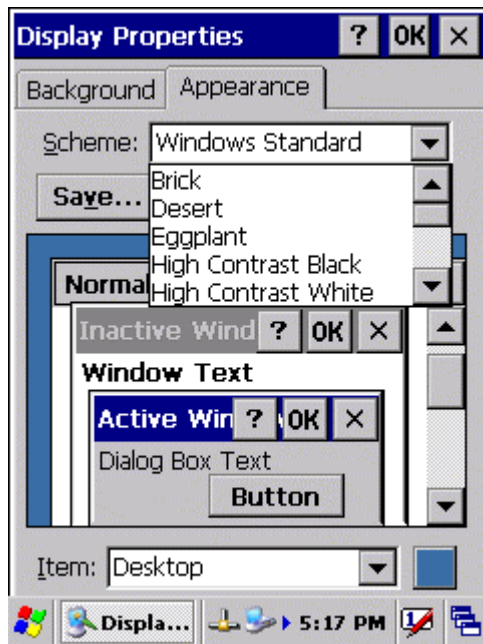


Figure 3-8-5

3.2.10 Fkey Settings

Table 3-9 FKey (A)



ICON	ITEM & FUNCTION
 FKey Setting	<ul style="list-style-type: none"> ● “Hot keys” Tab :(Figure 3-9-1)
	<ul style="list-style-type: none"> ✓ Assign your hot keys to wakeup system after it goes into sleep mode.
	<ul style="list-style-type: none"> ✓ To select which key(s) that can wakeup system, then, tap “OK”. < F1 key, F2 key, F3 key, F4 key and Scanner Buttons>
	<ul style="list-style-type: none"> ● “AP Settings” Tab(Figure 3-9-2)
	<ul style="list-style-type: none"> ✓ To assign your favorite application program to F1,F2,F3 and F4 hot keys. ✓ Choose one of F1, F2, F3 and F4 from pull-down list.(Figure 3-9-3) ✓ To tap “Open” inside “Assign program” applet. ✓ Select one application program you want from program list, Then, choose “OK”. (Figure 3-9-4) ✓ To tap <u>Default</u> tab to return back to default setting. (Figure 3-9-2)

Table 3-9 FKey (B)

ICON	ITEM & FUNCTION	
 FKey Setting	<ul style="list-style-type: none"> “AP Settings” Tab(Figure 3-9-2) 	
	<ul style="list-style-type: none"> ✓ The default setting for F1~F4: 	
	F Key	Name of Application Program
	F1	Internet Explorer
	F2	WordPad
	F3	Inbox
	F4	My Computer

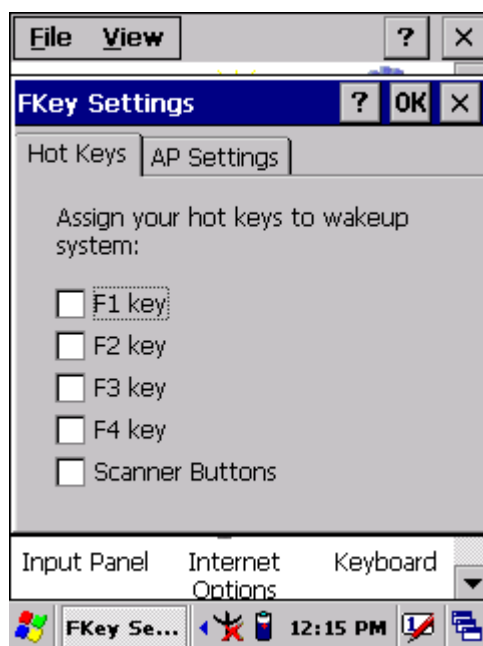


Figure 3-9-1



Figure 3-9-2

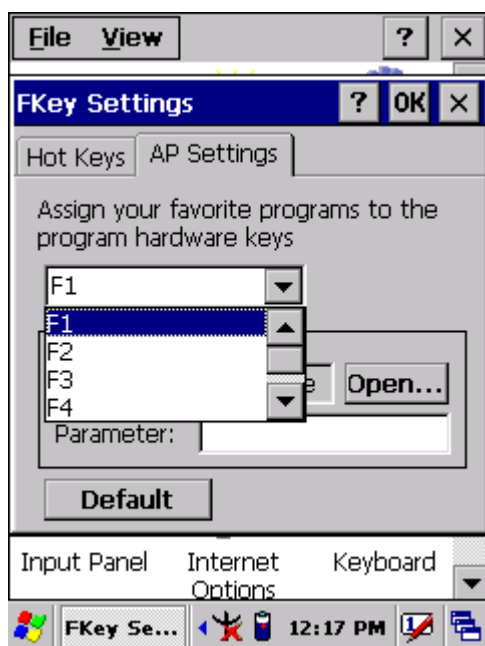


Figure 3-9-3

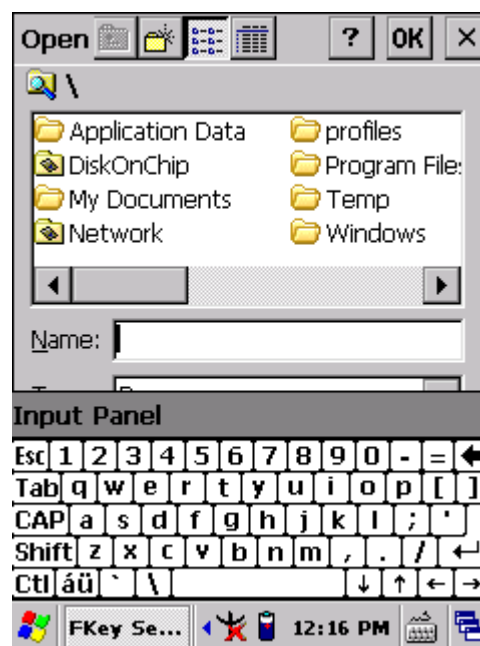



Figure 3-9-4

3.2.11 Information

Table 3-10 Information

ICON	ITEM & FUNCTION
 Information	<ul style="list-style-type: none"> • “Information” Tab : ✓ Provide hardware version, Software version, ROM size, RAM size, Serial No. and Configuration No.

3.2.12 Input Panel

Table 3-11 Display properties(A)

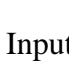
ICON	ITEM & FUNCTION
 Input Panel	<ul style="list-style-type: none"> • “Input panel” Tab :(Figure 3-10-1) ✓ Select the input method you want to change. ✓ To change the Soft Keyboard Options , tap “Option” (Figure 3-10-2) .

Table 3-11 Display properties(B)

ICON	ITEM & FUNCTION
Input Panel	<ul style="list-style-type: none"> • “Input panel” Tab : ✓ Change the soft keyboard options as desired, selecting from: <ul style="list-style-type: none"> ➢ Large or small keys ➢ Using gestures for space, black-space shift, and enter. ✓ To exit the soft keyboard Options, press “OK” on the control bar, or press the <Enter> key on the keypad. ✓ To exit the Input Panel, press “OK” on the control bar, or press the <Enter> key on the keypad.

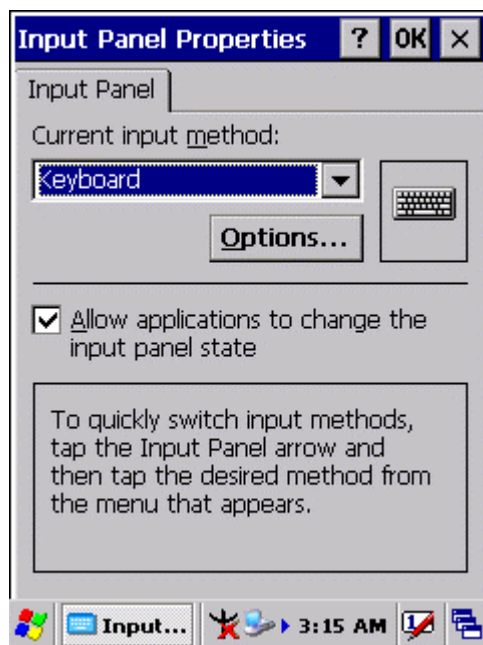


Figure 3-10-1

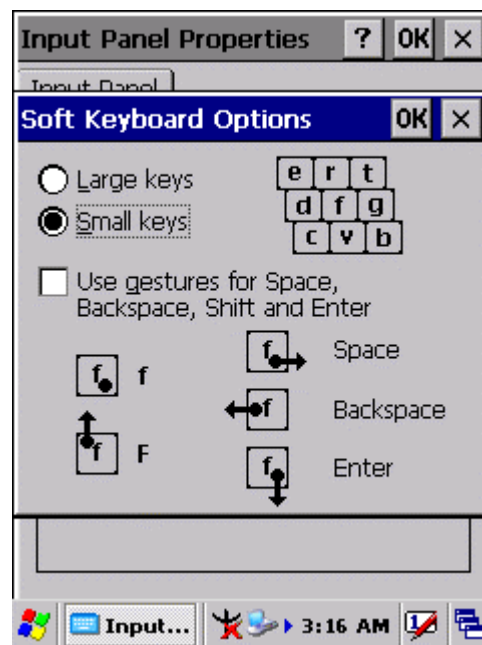


Figure 3-10-2

3.2.13 Internet Options

Table 3-12 Internet Options(A)

ICON	ITEM & FUNCTION
Internet Settings	<ul style="list-style-type: none"> • “General” Tab :(Figure 3-11-1) ✓ Type in the URL of desired start page and the desired search engine. You also change the Cache Size, clear the Cache and Clear the History..

Table 3-12 Internet Options(B)

ICON	ITEM & FUNCTION
Internet Settings	<ul style="list-style-type: none"> ● “Connection” Tab :(Figure 3-11-2)
	<ul style="list-style-type: none"> ✓ Modify the network access setting as desired.
	<ul style="list-style-type: none"> ● “Security” Tab (Figure 3-11-3)
	<ul style="list-style-type: none"> ✓ Modify the security settings as desired. You can enable any of the following by tapping the checkbox: <ul style="list-style-type: none"> ➤ Allow cookies ➤ Allow TLS 1.0 security ➤ Allow SSL 2.0 security ➤ Allow SSL 3.0 security ➤ Warn when switching across secure and insecure areas.
	<ul style="list-style-type: none"> ● “Advanced” Tab (Figure 3-11-4)
	<ul style="list-style-type: none"> ✓ Modify the security settings as desired. You can enable any of the following by tapping the checkbox: <ul style="list-style-type: none"> ➤ Display Image in pages ➤ Play sounds in pages ➤ Enable scripting ➤ Display a notification about every script error ➤ Underline links- <ul style="list-style-type: none"> ○ Never ○ Always ○ Hover



Figure 3-11-1

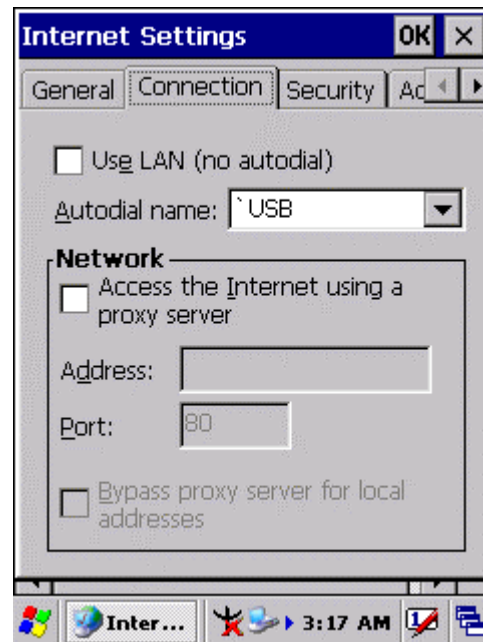


Figure 3-11-2

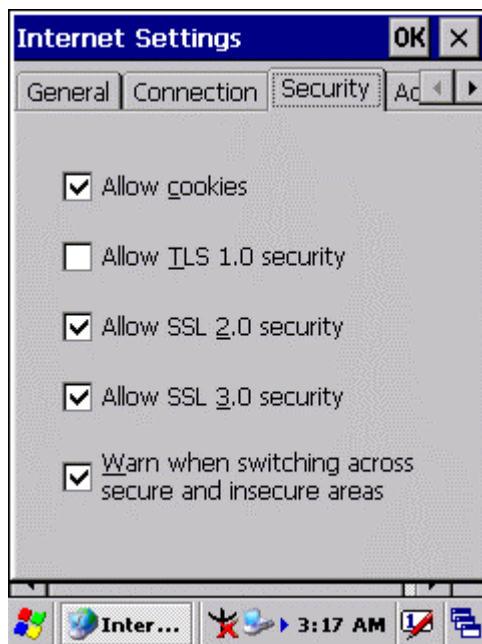


Figure 3-11-3

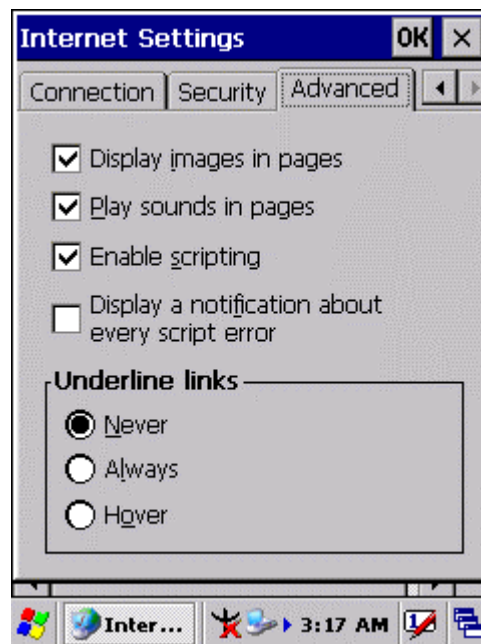


Figure 3-11-4

3.2.14 Keyboard

Table 3-13 Keyboard(A)

ICON	ITEM & FUNCTION
Keyboard	<ul style="list-style-type: none">• “Repeat” Tab : (Figure 3-12)
	✓ To change the amount of time between depressions before repetition starts, adjust the Repeat delay slider
	✓ To change the repeat rate, adjust the Repeat rate slider.
	✓ Test your new setting.
	✓ Tap “ OK ” to exit the “ Keyboard ” Tab.

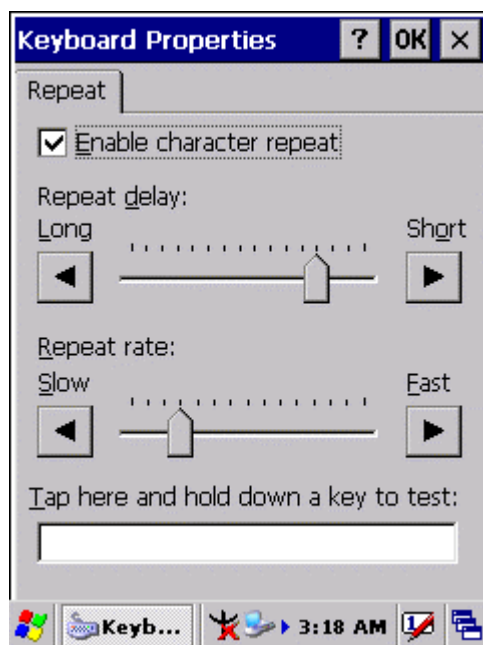


Figure 3-12

3.2.15 Mouse

Table 3-14 Mouse(A)

ICON	ITEM & FUNCTION
Mouse	<ul style="list-style-type: none"> • “Double-Click” Tab :(Figure 3-13-1,Figure 3-13-2)
	✓ Double-click the checkerboard grid at comfortable speed
	✓ Double-click the Test icon to test your setting.
	✓ The function is OK if the figures are changed from Figure 3-13-1 to Figure 3-13-2.
	✓ To tap “OK” to exit the Mouse tab.

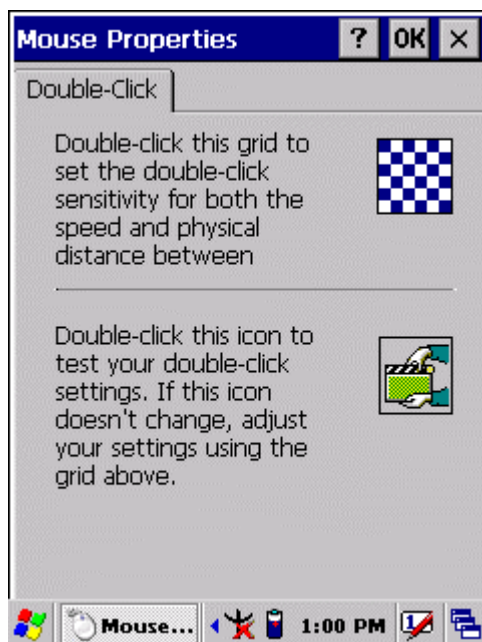


Figure 3-13-1

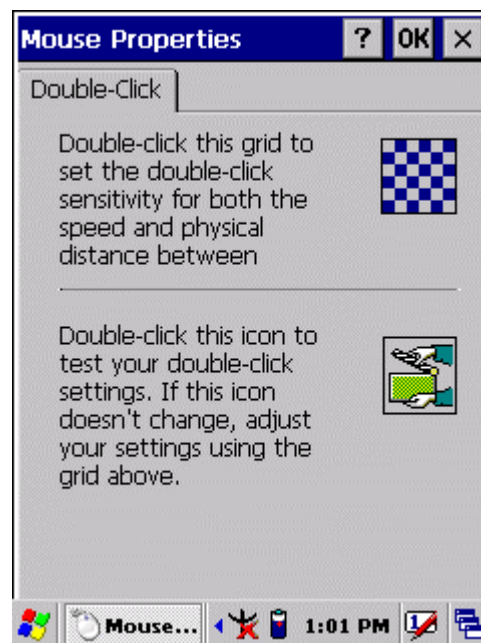


Figure 3-13-2

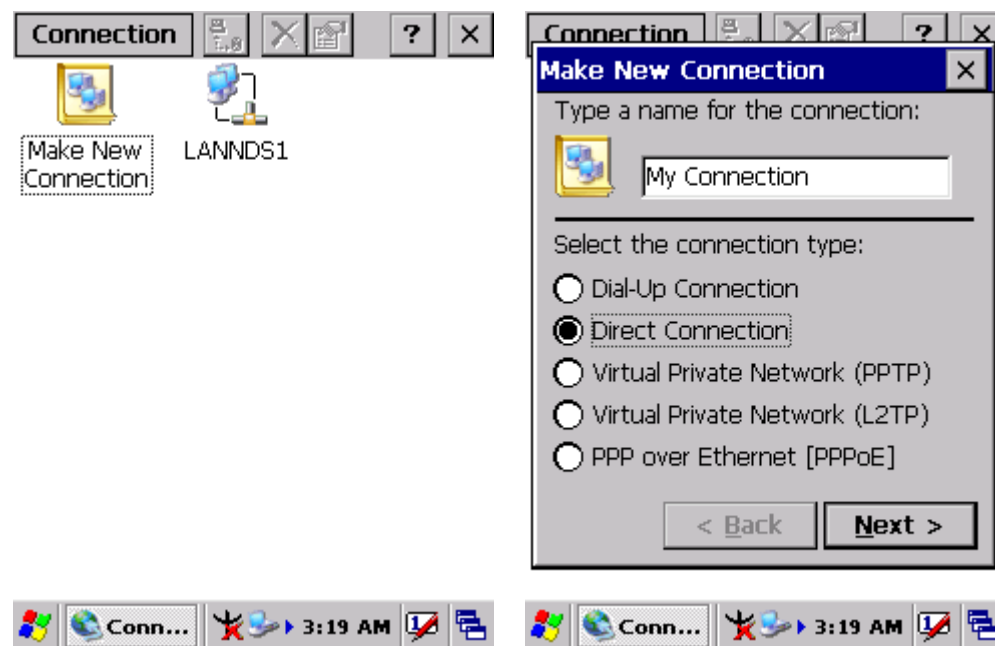
3.2.16 Network and Dial-up Connections

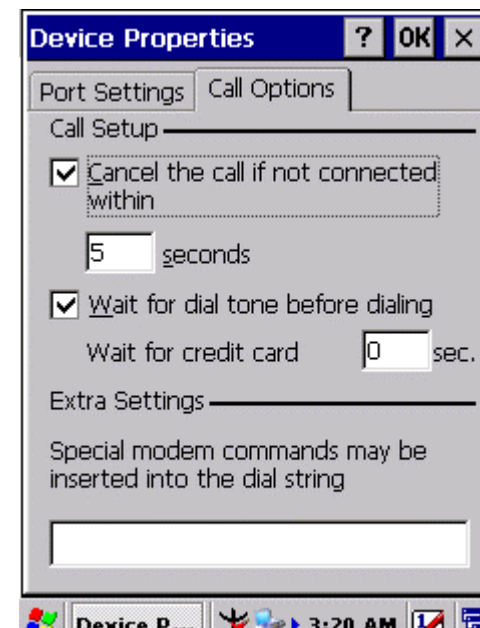
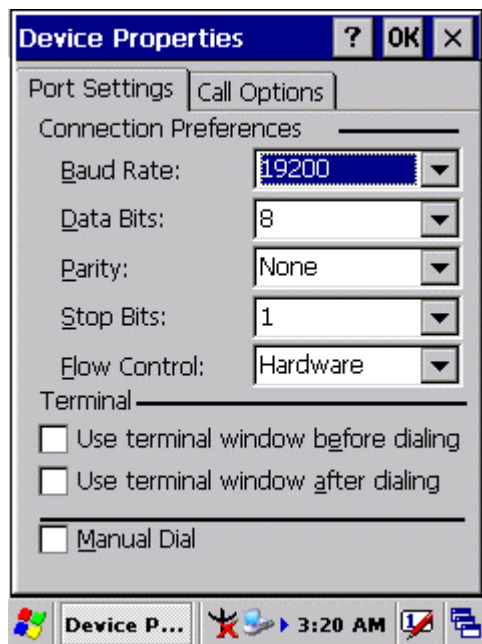
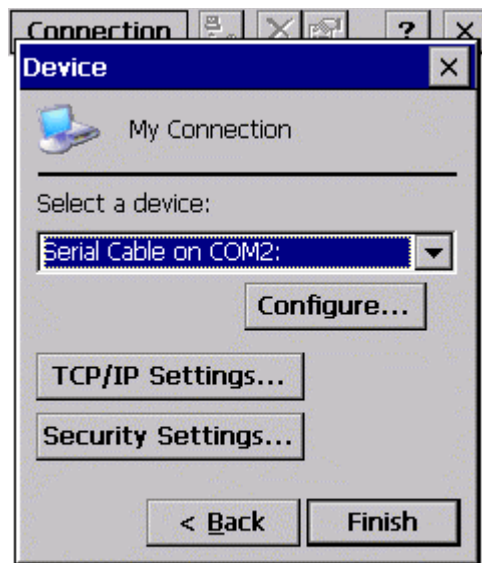
Table 3-15(A) Network and Dial-up Connections

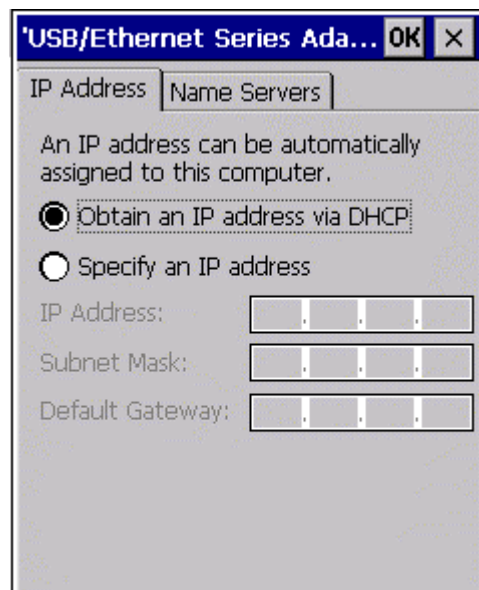
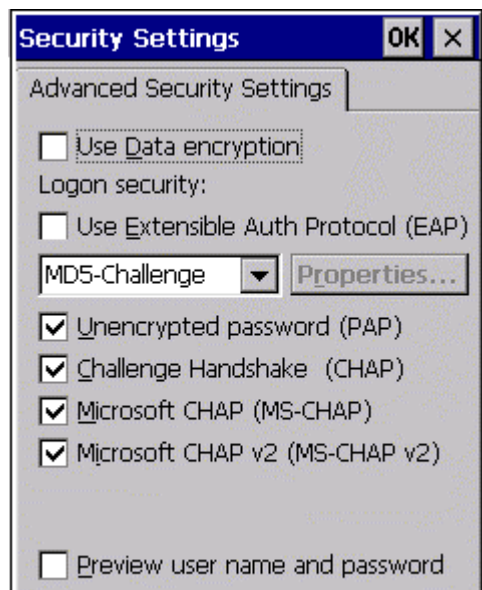
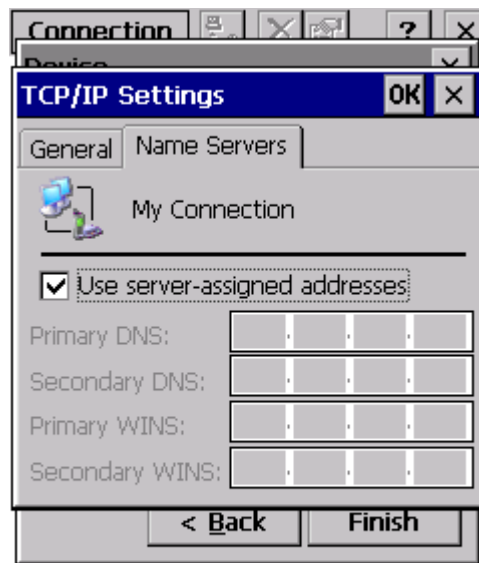
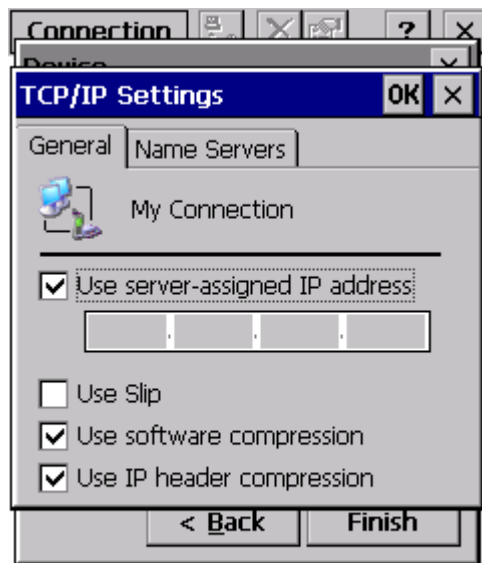
ICON	ITEM & FUNCTION
Network and Dial-up Connections	<ul style="list-style-type: none"> ● “Connection” Tab :
	<ul style="list-style-type: none"> ✓ To create a “Dial-up Connection”: <ul style="list-style-type: none"> ➤ Double-tap the “Make New connection”. ➤ In the “Make New Connection” dialog box, enter a name for the connection. ➤ Select “Dial-Up Connection”. ➤ Select the “Next” button. ➤ Select the modem you want use. ➤ Select “Configure” ➤ Under “Connection Reference”, use the default settings provided. If you can’t connect using these settings, see your ISP or network administrator for specific information. If you want to always enter a phone number before connecting, Select “Manual Dial”. Select “OK”. ➤ Select “TCP/IP Settings”. In the “General” tab, ensure “Use Server-assigned IP address” is selected. In the “Name Servers” tab, ensure “Use Server-assigned addresses” is selected, and select “OK”. If you are unable to connect with these default settings, see your ISP or network administrator for specific TCP/IP information. ➤ Select the “Next” button and type the telephone number. ➤ Select the “Finish” button. <p>The connection you just created appears as an icon in the “Network and Dial-up Connections” folder.</p> ✓ Set up a point-to-Point Protocol(PPP) account with an ISP and obtain the following information: <ul style="list-style-type: none"> ➤ Access telephone number ➤ User name ➤ Password

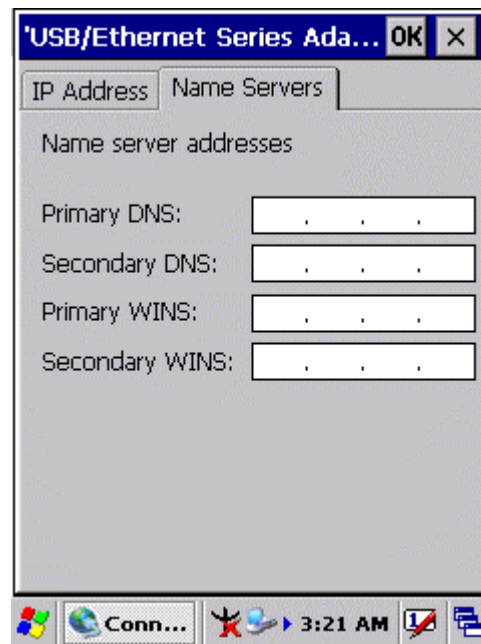
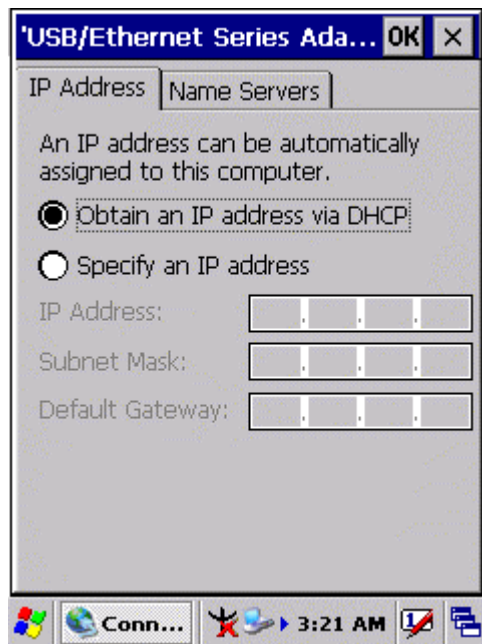
Table 3-15(A) Network and Dial-up Connections

ICON	ITEM & FUNCTION
Network and Dial-up Connections	<p>Once you have established an account, create a new connection on your device. When creating this connection, you should be able to use all of the default TCP/IP settings provided in the Make New Connection Wizard. If you can't connect using the default settings, contact your ISP or access your ISP's Web site for specific TCP/IP information as well as primary and secondary DNS address.</p> <p>✓ Modify connection setting</p> <ul style="list-style-type: none"> ➤ Select Start > Settings > Network and Dialup Connections ➤ Select the icon for connection settings you want to modify. ➤ Select File > Properties, or double- tap the appropriate icon. ➤ Select desired options. There may be additional settings that depend on the connection. To modify, select the icon and select the icon and select Advanced Settings... from the menu.









3.2.17 Owner

Table 3-16 Owner

ICON	ITEM & FUNCTION
Owner	<ul style="list-style-type: none"> • “Identification” Tab : (Figure 3-15-1)
	✓ Fill in or edit the data as desired.
	✓ To have this information displayed when you start your device, select “Display Owner Identification” at Power On.
	✓ To set up identification for remote networks, see Setting up identification for remote networks.
	<ul style="list-style-type: none"> • “Network ID” Tab: (Figure 3-15-2)
	✓ Enter the user name, password, and domain name you use to log on to remote network.

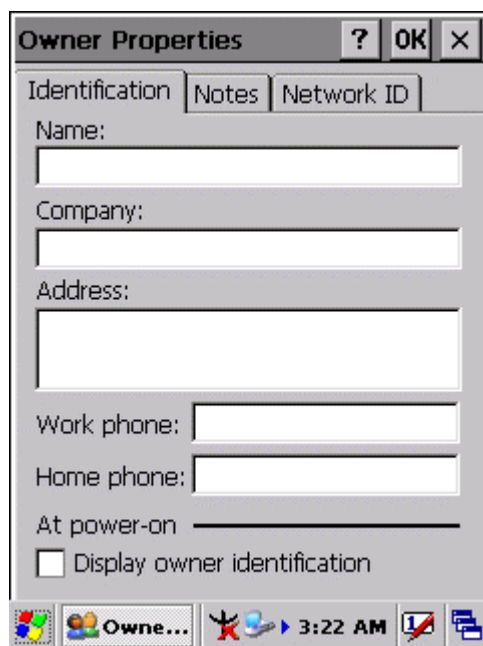


Figure 3-15-1

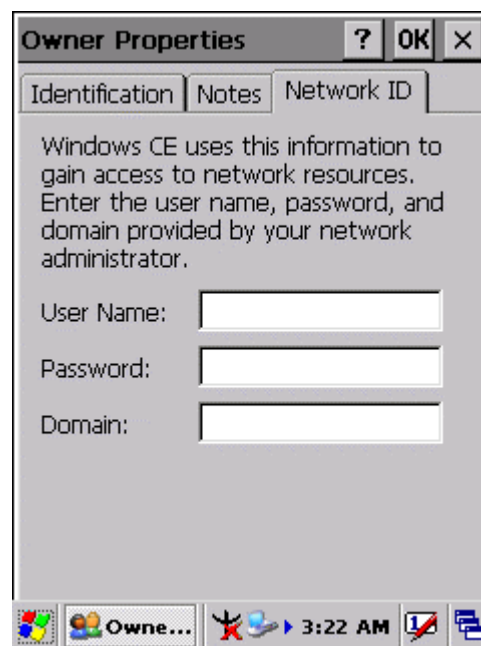


Figure 3-15-2

3.2.18 Password

Table 3-17 Password

ICON	ITEM & FUNCTION
Password	• “Password Setting” Tab : (Figure 3-16)
	✓ Enter the password
	✓ In the “ Confirm password ” box, enter the password again.
	✓ To require the password on startup, select “ Enable password protection at power- on ”. and/or select “ Enable password protection for screen saver ”
	✓ To exit the Password control panel, press “ OK ” from the control bar, or press the < Enter > key on the keypad.

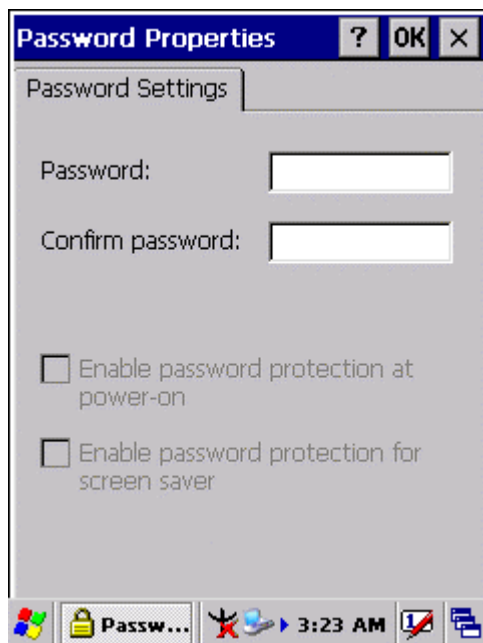


Figure 3-16

3.2.19 PC Connection

Table 3-18 PC Connection

ICON	ITEM & FUNCTION
PC Connection	<div>• “PC Connection” Tab : (Figure 3-17-1)</div>
	<div>✓ Select the first checkbox to enable direct connections to the desktop computer. (Figure 3-17-1)</div>
	<div>✓ Tap the “Change Connection...” button to modify the connection method from USB, IrDA, or Serial. (Figure 3-17-2)</div>
	<div>✓ To exit the “Change Connection” dialog, press “OK” from the control bar, or press the <Enter> key on the keypad.</div>
	<div>✓ To exit the “PC Connection” properties control panel, press “OK” from the control bar, or press the <Enter> key on the keypad.</div>

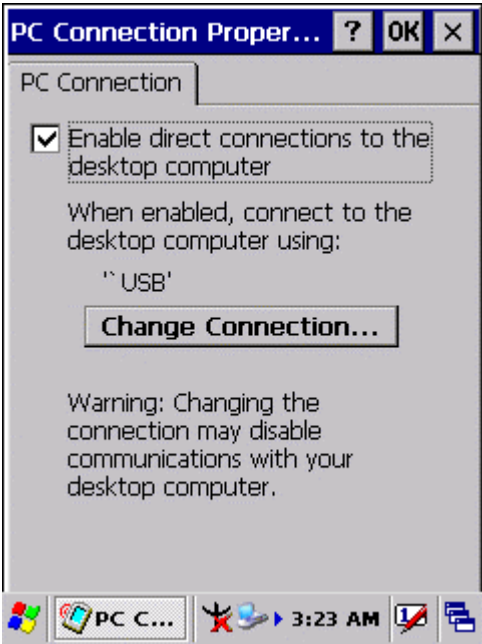


Figure 3-17-1



Figure 3-17-2

3.2.20 Power

Table 3-19 Power

ICON	ITEM & FUNCTION
Power	<ul style="list-style-type: none"> • “Battery” Tab : (Figure 3-18-1)
	<ul style="list-style-type: none"> ✓ Provide change level indicators for Main battery and Backup battery. ✓ To exit Battery control panel, press “OK” from the command bar, or press <Enter> key on keypad.
	<ul style="list-style-type: none"> • “ Schemes” Tab: (Figure 3-18-2)
	<ul style="list-style-type: none"> ✓ The Scheme Tab allows you to determine the time to switch state to Suspend mode when using either Battery Power or AC Power. ✓ Select Battery Power or AC Power as the power scheme from the pull-down list.(Figure 3-18-2) ✓ Select the time to suspend mode from the pull-down list. (Figure 3-18-3)
	<ul style="list-style-type: none"> • “Device Status” Tab: (Figure 3-18-4)
	Provide power level of device – The power level ranges from “ High(D0)” which means the device is at the highest power level to “Off(D4)” which means the device is at the lowest power level.

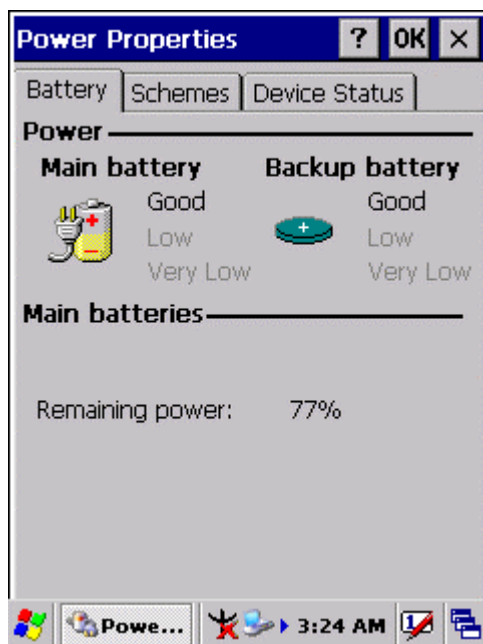


Figure 3-18-1

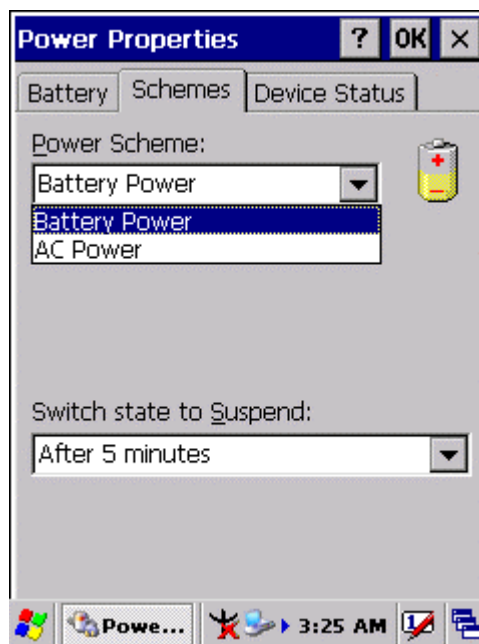


Figure 3-18-2

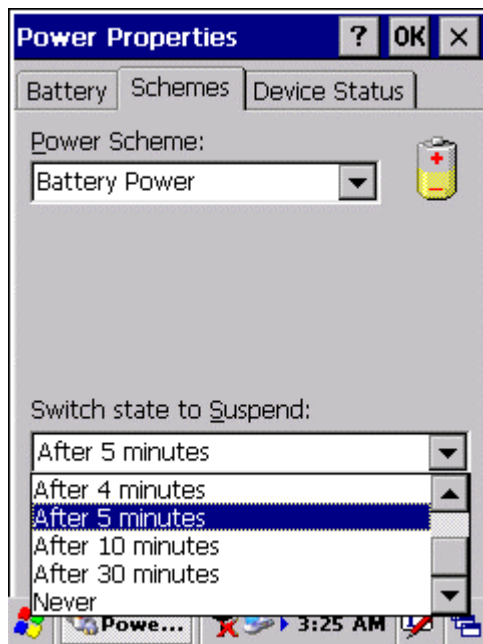


Figure 3-18-3

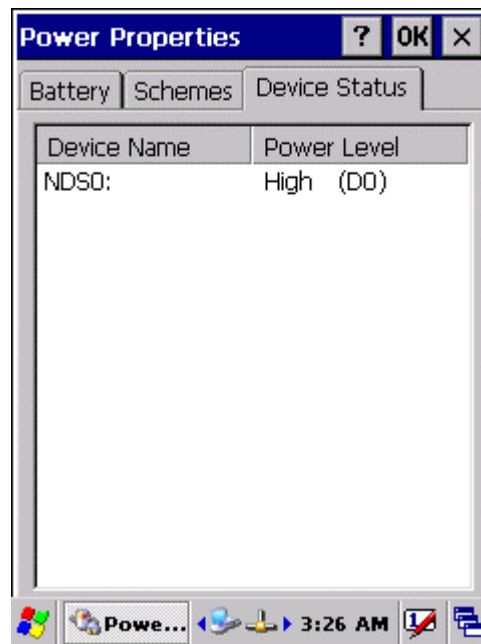


Figure 3-18-4

3.2.21 Regional Settings

Table 3-20 Regional Settings

ICON	ITEM & FUNCTION
Regional Settings	<ul style="list-style-type: none"> • “Region” Tab : (Figure 3-19-1)
	<ul style="list-style-type: none"> ✓ Select the desired location/language. ✓ Review the Appearance samples in the bottom half of the screen. ✓ Select the Tab at the top for any settings you wish to change, Options to modify include Number, Currency, Time, and Date. (Figure 3-19-3 ~ Figure 3-19-9)

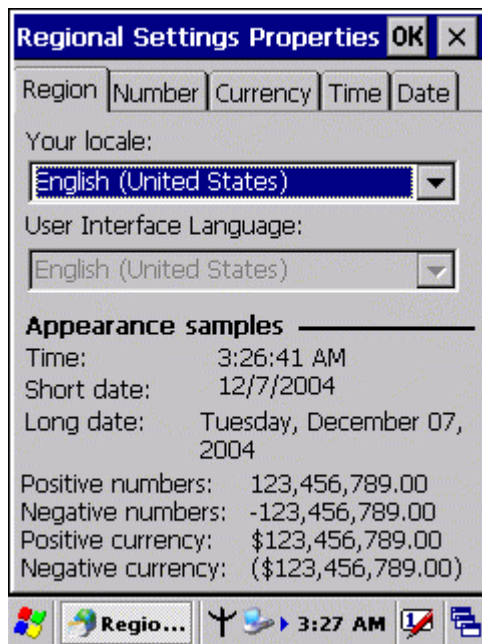


Figure 3-19-1

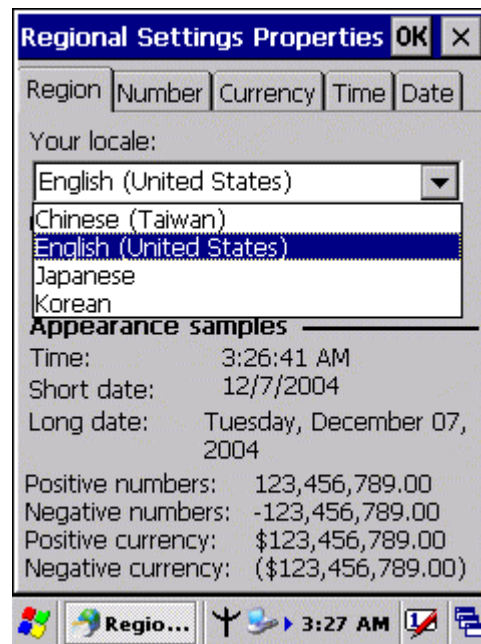


Figure 3-19-2

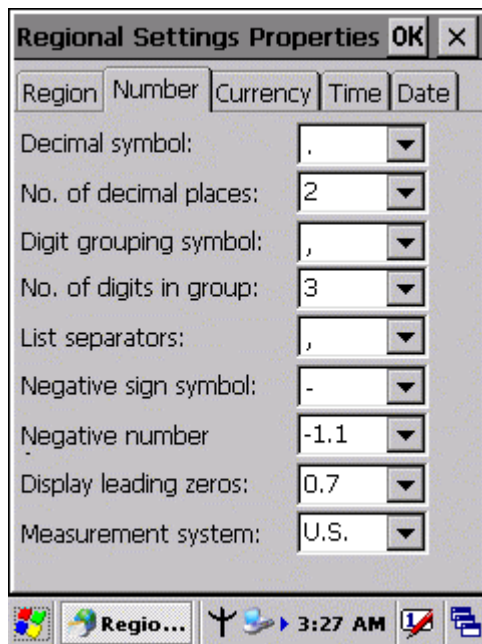


Figure 3-19-3

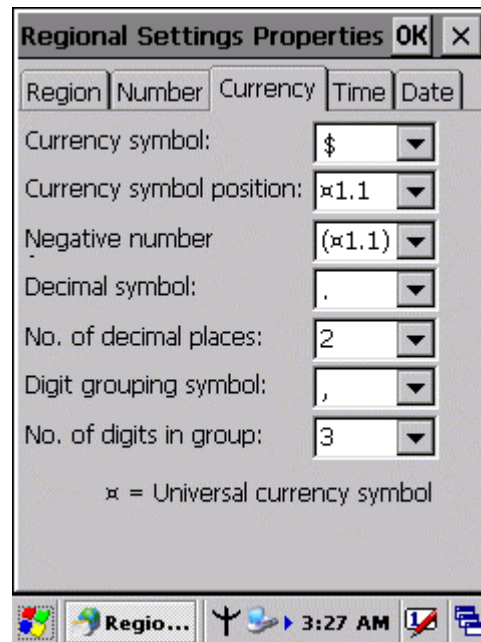


Figure 3-19-4

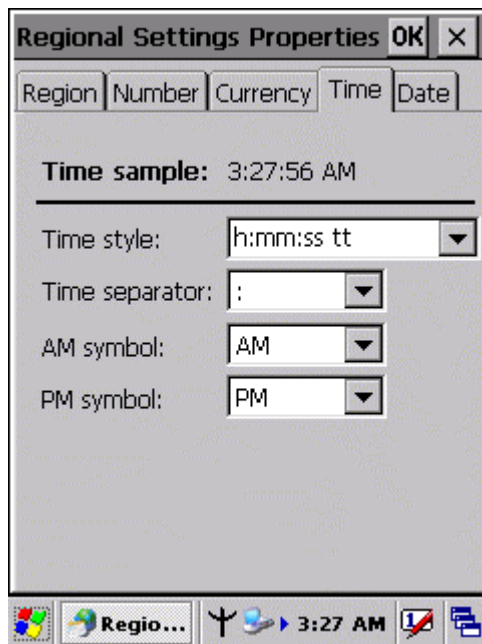


Figure 3-19-5

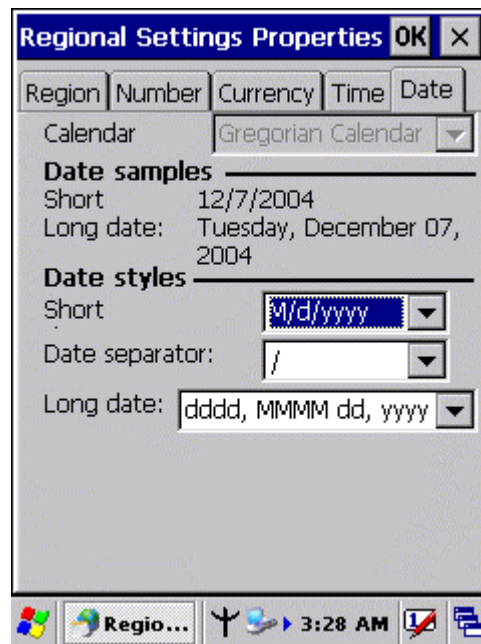


Figure 3-19-6

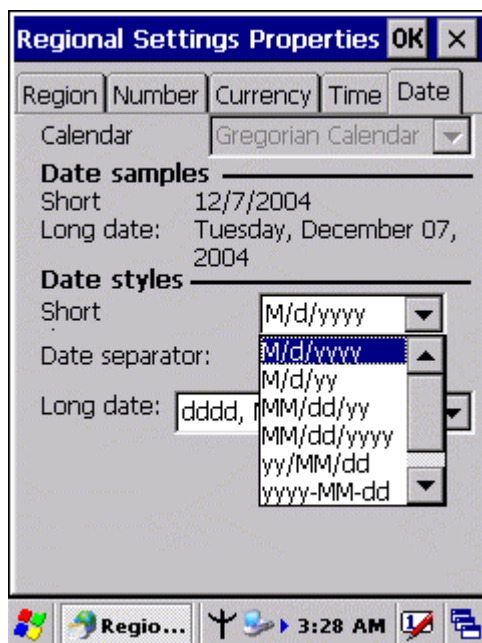


Figure 3-19-7

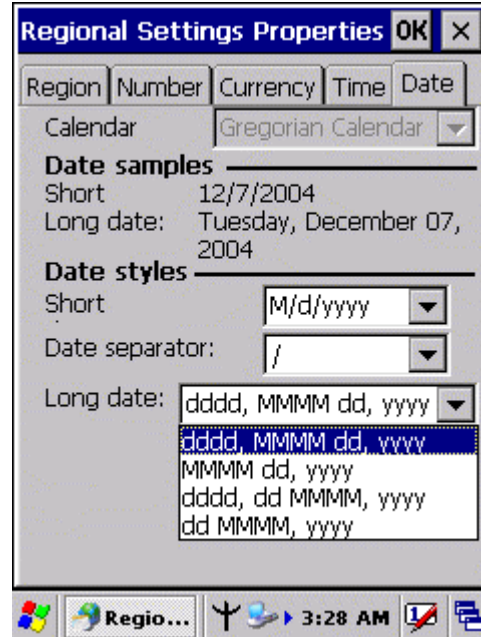


Figure 3-19-8

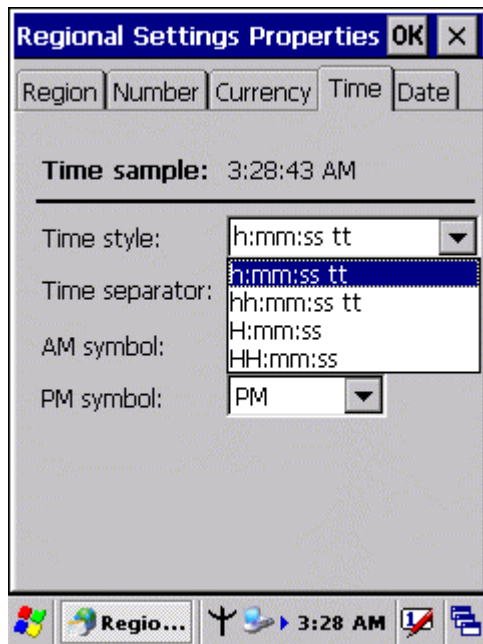


Figure 3-19-9

3.2.22 Remove Programs

Table 3-21 Remove Programs

ICON	ITEM & FUNCTION
Remove Programs	<ul style="list-style-type: none"> • “Remove Programs” Tab : <ul style="list-style-type: none"> ✓ Only user installed programs can be removed. ➤ Select the program you wish to remove from the list and press “remove” button.

3.2.23 Storage Manager

Table 3-22 Storage Manager(A)


ICON	ITEM & FUNCTION
 Storage manager	<ul style="list-style-type: none"> • “Storage Manager” Tab : (Figure 3-20) <ul style="list-style-type: none"> ✓ To change Storage properties control panel default settings: Insert. Compact Flash(CF) or Secure digital (SD) storage card into the unit. ➤ Select Start > Settings > Control Panel > Storage Properties

Table 3-22 Storage Manager(B)


ICON	ITEM & FUNCTION
 <p>Storage manager</p>	<ul style="list-style-type: none"> • “Storage Manager” Tab : (Figure 3-20) <ul style="list-style-type: none"> ➤ From the “Storage Info” pull-down list, select the desired storage device. ➤ You can also format, dismount, and create partitions on storage devices using this control panel. ➤ To save and exit the Storage Properties control panel, press “OK” from the control bar, or press the <Enter> key on the keypad. <p>Caution: Dismounting or formatting the DiskOnChip will erase all files and program stored in Flash Memory</p>



Figure 3-20

3.2.24 Stylus

Table 3-23 Stylus(A)

ICON	ITEM & FUNCTION
Stylus	<ul style="list-style-type: none"> • “Double-Tap” Tab : (Figure 3-21-1,Figure 3-21-2)
	<ul style="list-style-type: none"> ✓ Double-tap the checkerboard grip at a comfortable speed. ✓ Double-tap clapboard to test your settings ✓ The function is OK if the figures are changed from Figure 3-21-1 to Figure 3-21-2. ✓ To tap “OK” to exit the Stylus Properties.
	<ul style="list-style-type: none"> • “Calibration”: (Figure 3-21-3)
	<ul style="list-style-type: none"> ✓ In the Welcome Wizard, you tapped a target with the stylus to set the amount of pressure needed for the screen to respond to your stylus taps. ✓ Please also see 2.4.3: Calibration of the touch Screen

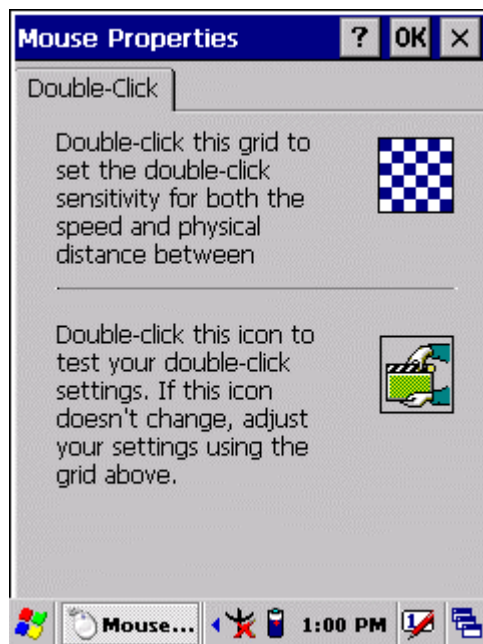


Figure 3-21-1

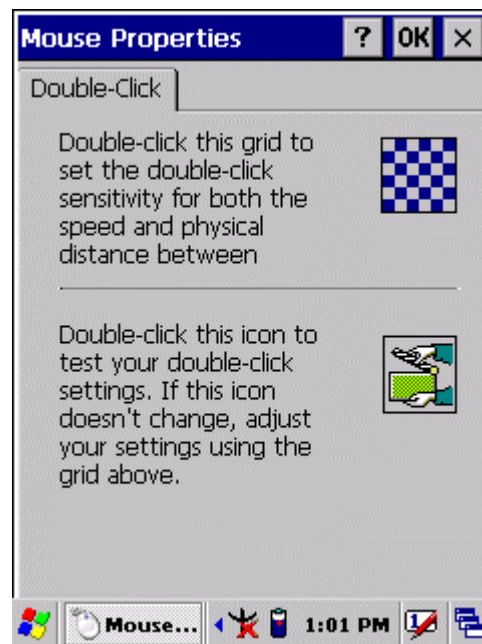


Figure 3-21-2

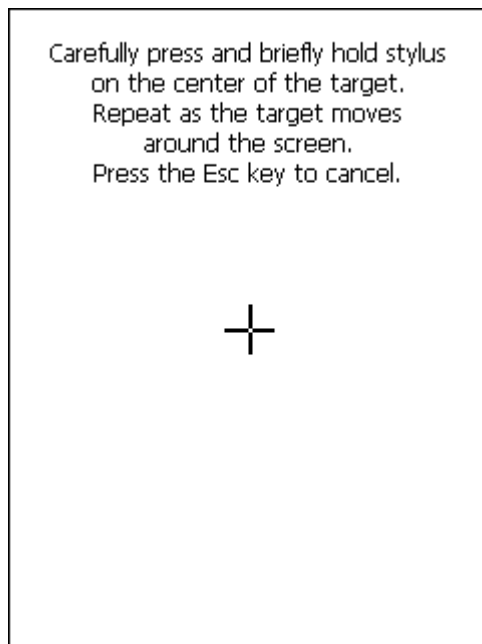


Figure 3-21-3

3.2.25 System

Table 3-24 System(A)

ICON	ITEM & FUNCTION
System	<ul style="list-style-type: none"> • “General” Tab : (Figure 3-22-1)
	<ul style="list-style-type: none"> ✓ To show: <ul style="list-style-type: none"> ➤ Firmware information ➤ Information about Processor type, Memory size, Expansion card
	<ul style="list-style-type: none"> • “Memory” : (Figure 3-22-2)
	<ul style="list-style-type: none"> ✓ Move the slider to adjust memory allocation. Default storage memory is normally is normally set to about 8MB with the reminder assigned to Program memory. ✓ Press the “OK” key on the Keypad. <p>Note: the difference is occupied by OS between the RAM size in Information properties and total memory size of storage memory and program memory</p>

Table 3-24 System(B)

ICON	ITEM & FUNCTION
System	<ul style="list-style-type: none"> • “Device Name” Tab : (Figure 3-22-3)
	<ul style="list-style-type: none"> ✓ Your device uses this information to identify itself to other computers. ✓ The input panel will open to facilitate data entry. ✓ To close the Device Name, press the “OK” button, or press the <Enter> key on keypad.
	<ul style="list-style-type: none"> • “Copyrights” Tab: (Figure3-22-4)
	<ul style="list-style-type: none"> ✓ Refer to this tab for specific copyright data. As a user, you are responsible to read this statement.



Figure 3-22-1

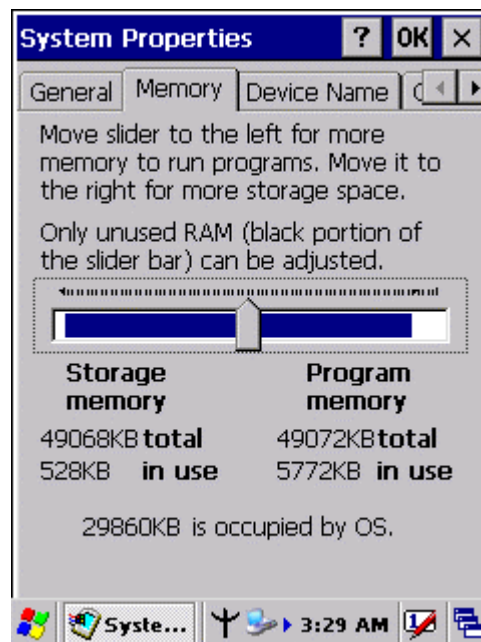


Figure 3-22-2

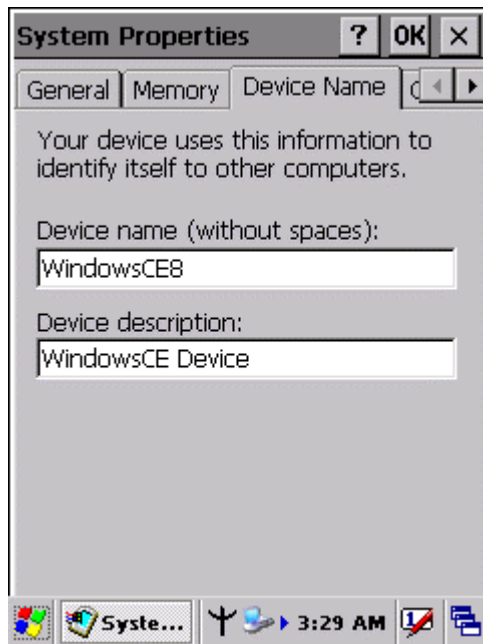


Figure 3-22-3

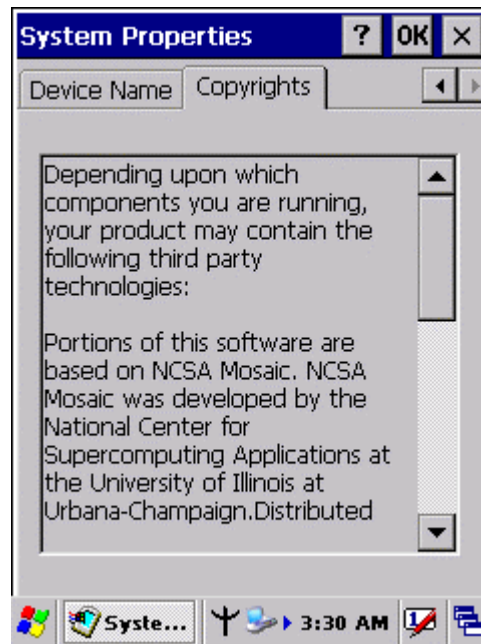


Figure 3-22-4

3.2.26 Volume & Sounds Properties

Table 3-25 Volume & Sound

ICON	ITEM & FUNCTION
Volume & Sound	<ul style="list-style-type: none"> • “Volume” Tab : (Figure 3-23-1)
	<ul style="list-style-type: none"> ✓ The factory default for Volume is the forth level. You can adjust the volume to your environment and comfort. <ul style="list-style-type: none"> ➤ Set the volume by adjusting the slider from Soft to Loud, or press Right or Left edge of Navigation keys
	<ul style="list-style-type: none"> • “Sounds ” Tab: (Figure3-23-2)
	<ul style="list-style-type: none"> ✓ Enable the desired sounds for key clicks, screen taps, notifications, and applications.

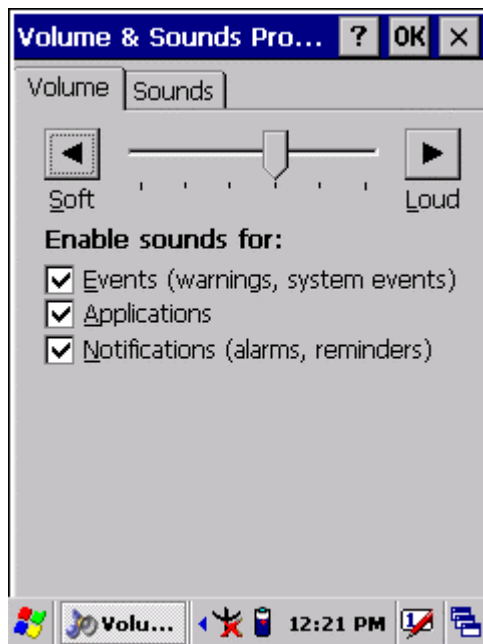


Figure 3-23-1

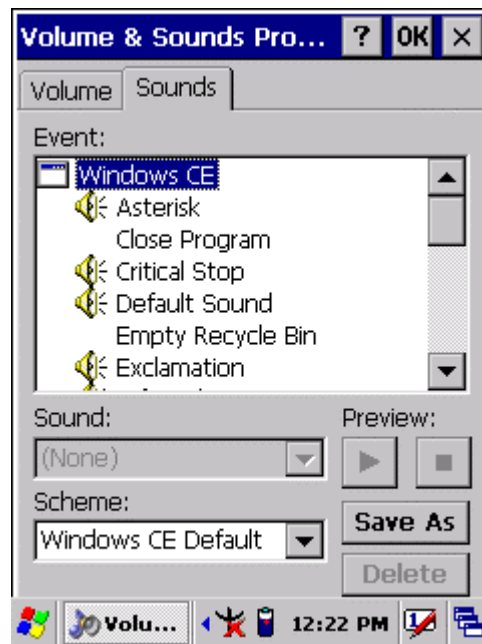


Figure 3-22-2

3.3 Taskbar and Start Menu

Table 3-26 Taskbar and Start menu

ICON	ITEM & FUNCTION
Taskbar and Start Menu	<ul style="list-style-type: none"> • “General” Tab :
	<ul style="list-style-type: none"> ✓ In this tab, You can change the position of the Taskbar and Start menu <ul style="list-style-type: none"> ➤ Is always on top or not ➤ Auto hide or not ➤ Show Clock or not
	<ul style="list-style-type: none"> • “Advanced ” Tab:
	<ul style="list-style-type: none"> ✓ Tap the “Clear” button to remove the contents of the Documents Menu. ✓ Enable “<input type="checkbox"/> Expand Control Panel” to list all icons of Control Panel from top to bottom.

Chapter 4

Communication

4.1 Installing & Setting Up Microsoft ActiveSync

4.1.1 Installing Microsoft ActiveSync on the Host PC

Microsoft ActiveSync is a file transfer tool to synchronize the files on a PC with the files on your PDA.

To install Microsoft ActiveSync, complete the following steps on the PC:

1. Go to the Microsoft Windows CE.NET website and download the most current version of ActiveSync:
<http://www.microsoft.com/mobile/pockeypc/downloads/> .
2. Install the most version of Microsoft ActiveSync on the host PC.
3. Open ActiveSync.
4. Select **File > Communication Settings** from ActiveSync's menu bar.
5. Go to "Using ActiveSync" on page X.X to continue using ActiveSync.

4.1.2 Connecting PDA to Host PC

1. You can use either the USB/Serial(RS232) port of Single Dock or a USB/Serial(RS232) cable to connect the PDA to the Host PC.
 - To use the dock, you must first insert the PDA into the slot, making sure that the unit is firmly seated the dock.
 - To use the cable, connect the USB/Serial cable to the PDA.
2. Connect the USB/Serial dock or cable to the Host PC's serial port or USB port.
3. Connect the dock or PDA to the power adapter and power source.

4.2 Using ActiveSync

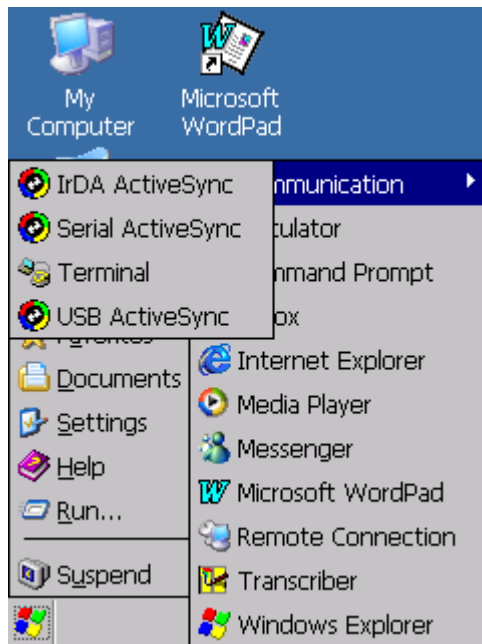
Use ActiveSync to transfer and synchronize files between the PDA and the Host PC.

4.2.1 Setting up a Partnership

During the Microsoft ActiveSync installation, you were prompted to create a

partnership with your mobile device. When you set up a partnership, you select synchronization and file conversation settings, which are contained in a file on your desktop computer. This file enables your desktop computer to recognize your device. Only devices that have a partnership with a desktop computer can synchronize information between the two computers.

For more information on partnerships, please refer to your Microsoft ActiveSync documentation or help file.



Transferring Files:

To transfer files, complete the following steps on the host PC:

- ✓ Select **Start > Programs > Communication > (IrDA, Serial, or USB) ActiveSync**.
- ✓ Double-click on the selected **ActiveSync** icon
- ✓ After you have established a connection with PDA, tap the **“Explore”** button at the top of the **ActiveSync** window (or select **Explore** from the File menu).
- ✓ Navigate to the target directory on your PDA and copy the desired file by using the **Copy/paste** method or dragging and dropping the desired file(s) into the folder.

4.2.2 ActiveSync File Synchronization

ActiveSync files synchronization requires an ActiveSync partnership between the PDA and the Host PC. Refer to “Setting up a Partnership”, above:

- ✓ Select the files in the synchronization configuration for the PDA partnership.
- ✓ Select **Tools > Options** from the ActiveSync command bar to configure the synchronization options.
- ✓ Place the file to be synchronized in the **Synchronization** folder created you’re **My Documents** directory. Defaults to the desktop. During the ActiveSync connection, all files in the **Synchronization** folder will be synchronized to the **\My Documents** directory on the PDA.

4.2 Networking

Please see the **3.2.17 Owner, Table 3-16 Owner** on page 3-50 for **setting up the network ID**. And see the **2.5.6 Initiating a Network Connection** to setup the 802.11b Wireless LAN for RF connecting.