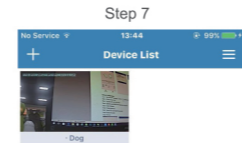
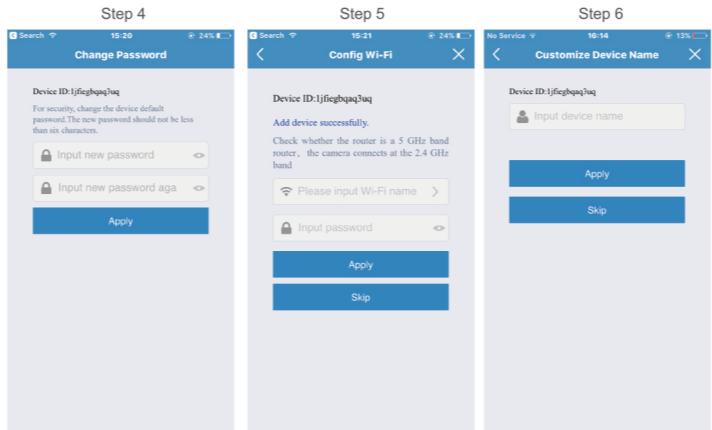
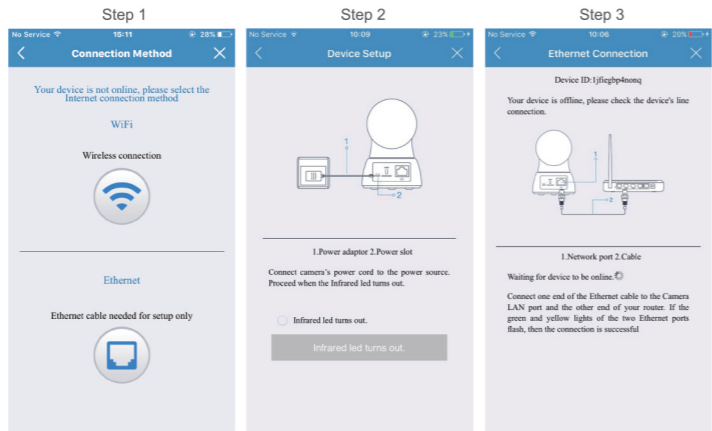


Ethernet configuration(The most stable way to connect to network)

- Step 1: Select Ethernet
 Step 2: Connect the camera's power cord to the power source, proceed to the next step when the infrared led turns out.
 Step 3: Connect the camera to the router through ethernet cable
 Step 4: Change password, you had better set a strong password to keep you camera safe
 Step 5: Select Wi-Fi and input the password
 Step 6: Modify the name(Like Front Door)
 Step 7: Preview



If you want to view the device via web browser, please visit www.myananke.com

Warning/Caution

Read this guide carefully and keep it for future reference
 Follow all instructions for safe use of the product and handle with care
 Use the camera within given temperature, humidity and voltage levels noted in Camera Specifications
 Do not disassemble the camera
 Do not point the camera directly towards the sun or a source of intense light
 Periodic cleaning may be required. Use a damp cloth only. Do not use harsh cleaners or aerosol cleaners.

Support

Visit our official website to get more support.

- 1 Go to www.annke.com
- 2 Search the model of your product
- 3 Click on the product in the search list
- 4 Download what you need.

ANNKE®
 Trusted Expert for Home Security

