



FCC TEST REPORT

FCC ID: QOBZWN3018

Product	:	In-Wall Smart Dimmer
Model Name	:	ZWN3018, 76597
Brand	:	JascoPro Series, Enbrighten, UltraPro
Report No.	:	PTC24102501101E-FC02
Prepared for		
Jasco Products Company LLC		
10 e memorial road Office oklahoma city Oklahoma United States 73114		
Prepared by		
Precise Testing & Certification Co., Ltd		
Building 1, No. 6, Tongxin Road, Dongcheng Street, Dongguan, Guangdong, China		



1 TEST RESULT CERTIFICATION

Applicant's name : Jasco Products Company LLC

Address : 10 e memorial road Office oklahoma city Oklahoma United States 73114

Manufacture's name : Ultra Tech Industries Co., Ltd.

Address : Industrial cluster Non Sao, Tan Dinh commune, Lang Giang district, Bac Giang, VIETNAM

Product name : In-Wall Smart Dimmer

Model name : ZWN3018, 76597

Standards : FCC CFR47 Part 15 Section 15.247

Test procedure : ANSI C63.10:2013

Test Date : Nov. 05, 2024 to Dec. 09, 2024

Date of Issue : Dec. 09, 2024

Test Result : Pass

This device described above has been tested by PTC, and the test results show that the equipment under test (EUT) is in compliance with the FCC requirements. And it is applicable only to the tested sample identified in the report.

This report shall not be reproduced except in full, without the written approval of PTC, this document may be altered or revised by PTC, personal only, and shall be noted in the revision of the document.

Test Engineer:

A handwritten signature in black ink, appearing to read 'Jack Zhou'.

Jack zhou / Engineer

Technical Manager:

A handwritten signature in black ink, appearing to read 'Simon Pu'.

Simon Pu / Manager



Contents

	Page
1 TEST RESULT CERTIFICATION	2
2 TEST SUMMARY	5
2.1 TEST SITE	5
3 GENERAL INFORMATION	6
3.1 GENERAL DESCRIPTION OF E.U.T.	6
3.2 CHANNEL LIST	7
4 EQUIPMENT DURING TEST	8
4.1 EQUIPMENTS LIST	8
4.2 MEASUREMENT UNCERTAINTY	10
4.3 DESCRIPTION OF SUPPORT UNITS	11
5 CONDUCTED EMISSION	12
5.1 E.U.T. OPERATION	12
5.2 EUT SETUP	12
5.3 TEST SET-UP (BLOCK DIAGRAM OF CONFIGURATION)	13
5.4 MEASUREMENT PROCEDURE	13
5.5 CONDUCTED EMISSION LIMIT	13
5.6 MEASUREMENT DESCRIPTION	13
5.7 CONDUCTED EMISSION TEST RESULT	13
6 RADIATED SPURIOUS EMISSIONS	16
6.1 EUT OPERATION	16
6.2 TEST SETUP	17
6.3 SPECTRUM ANALYZER SETUP	18
6.4 TEST PROCEDURE	19
6.5 SUMMARY OF TEST RESULTS	20
7 CONDUCT BAND EDGE AND SPURIOUS EMISSIONS MEASUREMENT	26
7.1 TEST PROCEDURE	26
7.2 TEST SETUP	26
7.3 TEST RESULT	27



8 6DB BANDWIDTH MEASUREMENT	32
TEST PROCEDURE	32
TEST SETUP	32
TEST RESULT	32
9 MAXIMUM PEAK OUTPUT POWER	34
9.1 TEST PROCEDURE	34
9.2 TEST SETUP	34
9.3 TEST RESULT	34
10 POWER SPECTRAL DENSITY	36
10.1 TEST PROCEDURE	36
10.2 TEST SETUP	36
10.3 TEST RESULT	36
11 ANTENNA APPLICATION	38
11.1 ANTENNA REQUIREMENT	38
11.2 RESULT	38
12 TEST SETUP	39
13 EUT PHOTOS	41



2 Test Summary

Test Items	Test Requirement	Result
Conduct Emission	15.207	PASS
Radiated Spurious Emissions	15.205(a) 15.209 15.247(d)	PASS
Conducted Spurious Emission	15.247(d)	PASS
Band edge	15.247(d) 15.205(a)	PASS
6dB Bandwidth	15.247(a)(2)	PASS
Maximum Peak Output Power	15.247(b)(3)	PASS
Power Spectral Density	15.247(e)	PASS
Antenna Requirement	15.203	PASS

2.1 Test Site

Precise Testing & Certification Co., Ltd

Address: Building 1, No. 6, Tongxin Road, Dongcheng Street, Dongguan, Guangdong, China

FCC Registration Number: 790290

A2LA Certificate No.: 4408.01

IC Registration Number: 12191A

FCC Designation Number: CN1219



3 General Information

3.1 General Description of E.U.T.

Product Name	:	In-Wall Smart Dimmer
Model Name	:	ZWN3018, 76597
Operating frequency	:	912 MHz and 920 MHz
Number of Channels	:	2 channels
Type of Modulation	:	DSSS OQPSK LR
Antenna installation	:	PCB Antenna
Antenna Gain	:	-15.59 dBi
Power supply	:	Input: AC 125V/60Hz Output: AC 125V 600W
Hardware Version	:	V8.0
Software Version	:	V2.5
Test sample No.	:	PTC24102501101E-1/6, PTC24102501101E-4/6, PTC24102501101E-6/6



3.2 Channel List

The EUT has been tested under its typical operating condition. Pre-defined engineering program for regulatory testing used to control the EUT for staying in continuous transmitting. Only the worst case data were reported.

The EUT has been associated with peripherals pursuant to ANSI C63.10-2013 and configuration operated in a manner tended to maximize its emission characteristics in a typical application. Frequency range investigated: radiation (9 KHz to the 10th harmonic of the highest fundamental frequency or to 40 GHz, whichever is lower).

The details of test channels and bandwidth were for RF conductive measurement.

Channel List:

Channel	Frequency (MHz)	Modulation
US11, CH3	912.00	DSSS OQPSK LR
US12, CH3	920.00	DSSS OQPSK LR



4 Equipment During Test

4.1 Equipments List

RF Conducted Test

Name of Equipment	Manufacturer	Model	Serial No.	Characteristics	Last Calibration	Calibration Interval
MXG Signal Analyzer	Agilent	N9020A	SER MY5111038	10Hz-26.5GHz	Aug.15, 2024	1 Year
Coaxial Cable	CDS	79254	46107086	10Hz-30GHz	Aug.15, 2024	1 Year
Power Meter	Anritsu	ML2495A	0949003	300MHz-40GHz	Aug.15, 2024	1 Year
Power Sensor	Anritsu	MA2411B	0917017	300MHz-40GHz	Aug.15, 2024	1 Year
Test S/W	Tonscend	JS1120-3	/	/	/	/

Remark: The temporary antenna connector is soldered on the PCB board in order to perform conducted tests and this temporary antenna connector is listed in the equipment list.

Radiated Emissions(Test Frequency from 9KHz-18GHz)

Name of Equipment	Manufacturer	Model	Serial No.	Characteristics	Last Calibration	Calibration Interval
EMI Test Receiver	Rohde&Schwarz	ESPI7	101671	9KHz-7GHz	Aug.15, 2024	1 Year
Loop Antenna	Schwarzbeck	FMZB 1519	192	9 KHz -30MHz	Aug.15, 2024	1 Year
Bilog Antenna	SCHWARZBECK	VULB9160	9160-3355	25MHz-2GHz	Aug.15, 2024	1 Year
Preamplifier (low frequency)	SCHWARZBECK	BBV 9475	9745-0013	1MHz-1GHz	Aug.15, 2024	1 Year
Cable	IMRO	AK-9515E(9m)	Cable-L	9KHz-3GHz	Aug.15, 2024	1 Year
Spectrum Analyzer	Rohde&Schwarz	FSV40	6625-01-588-5515	9KHz-40GHz	Aug.15, 2024	1 Year
Horn Antenna	SCHWARZBECK	9120D	9120D-1246	1GHz-18GHz	Aug.15, 2024	1 Year
Power Amplifier	ZHINAN	ZN3380C	15002	1GHz-26.5GH	Aug.15, 2024	1 Year



Report No.: PTC24102501101E-FC02

				z		
Horn Antenna	SCHWARZBECK	BBHA 9170	9170-1066	15GHz-40GHz z	Jul. 19, 2024	1 Year
Amplifier	SCHWARZBECK	BBV 9721	9721-205	18GHz-40GHz z	Jul. 19, 2024	1 Year
Cable	H+S	CBL-26	N/A	1GHz-26.5GHz z	Aug.15, 2024	1 Year
RF Cable	R&S	R204	R21X	1GHz-40GHz	Aug.15, 2024	1 Year
Test S/W	Tonscend	TS+	/	/	/	/

Conducted Emissions

Name of Equipment	Manufacturer	Model	Serial No.	Characteristics	Calibration Date	Calibration Interval
EMI Test Receiver	Rohde&Schwarz	ESCI	101417	9KHz-3GHz	Aug.15, 2024	1 Year
Artificial Mains Network	Rohde&Schwarz	ENV216	102453	9KHz-300MHz z	Aug.15, 2024	1 Year
Artificial Mains Network	Rohde&Schwarz	ENV216	101342	9KHz-300MHz z	Aug.15, 2024	1 Year
Limiter	R&S	ESH3-Z2	0357.8810.54-102808-NB	0Hz-30MHz	Aug.15, 2024	1 Year
RF Switch	DIAMOND ANTENNA	CX-210	/	0.09MHz-6GHz	Mar. 24,2024	1 Year
Test S/W	Tonscend	JS32-CE	/	/	/	/



4.2 Measurement Uncertainty

Parameter	Uncertainty
RF output power, conducted	$\pm 1.0\text{dB}$
Power Spectral Density, conducted	$\pm 2.2\text{dB}$
Radio Frequency	$\pm 1 \times 10^{-6}$
Bandwidth	$\pm 1.5 \times 10^{-6}$
Time	$\pm 2\%$
Duty Cycle	$\pm 2\%$
Temperature	$\pm 1^\circ\text{C}$
Humidity	$\pm 5\%$
DC and low frequency voltages	$\pm 3\%$
Conducted Emissions (150kHz~30MHz)	$\pm 3.64\text{dB}$
Radiated Emission(9kHz~30MHz)	$\pm 3.15\text{dB}$
Radiated Emission(30MHz~1GHz)	$\pm 5.03\text{dB}$
Radiated Emission(1GHz~25GHz)	$\pm 4.74\text{dB}$
Remark: The coverage Factor (k=2), and measurement Uncertainty for a level of Confidence of 95%	



Report No.: PTC24102501101E-FC02

4.3 Description of Support Units

Equipment	Model No.	Series No.
Incandescent lamp	N/A	N/A

5 Conducted Emission

Test Requirement	: FCC CFR 47 Part 15 Section 15.207
Test Method	: ANSI C63.10: 2013
Test Result	: PASS
Frequency Range	: 150kHz to 30MHz
Class/Severity	: Class B

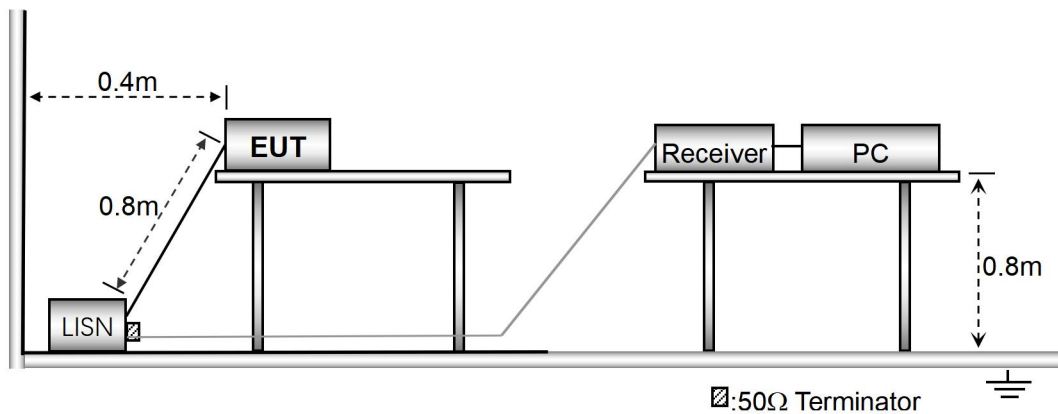
5.1 E.U.T. Operation

Operating Environment :

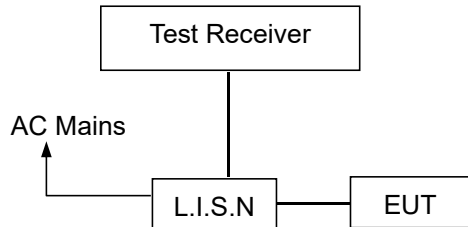
Temperature	: 25.5 °C
Humidity	: 51 % RH
Atmospheric Pressure	: 101.2kPa

5.2 EUT Setup

The conducted emission tests were performed using the setup accordance with the ANSI C63.10:2013



5.3 Test SET-UP (Block Diagram of Configuration)



5.4 Measurement Procedure

1. The EUT was placed on a table, which is 0.8m above ground plane.
2. Maximum procedure was performed on the six highest emissions to ensure EUT compliance.
3. Repeat above procedures until all frequency measured was complete.

5.5 Conducted Emission Limit

Conducted Emission

Frequency(MHz)	Quasi-peak	Average
0.15-0.5	66-56	56-46
0.5-5.0	56	46
5.0-30.0	60	50

Note:

1. The lower limit shall apply at the transition frequencies
2. The limit decreases in line with the logarithm of the frequency in the range of 0.15 to 0.50MHz.

5.6 Measurement Description

The maximised peak emissions from the EUT was scanned and measured for both the Live and Neutral Lines. Quasi-peak & average measurements were performed if peak emissions were within 6dB of the average limit line.

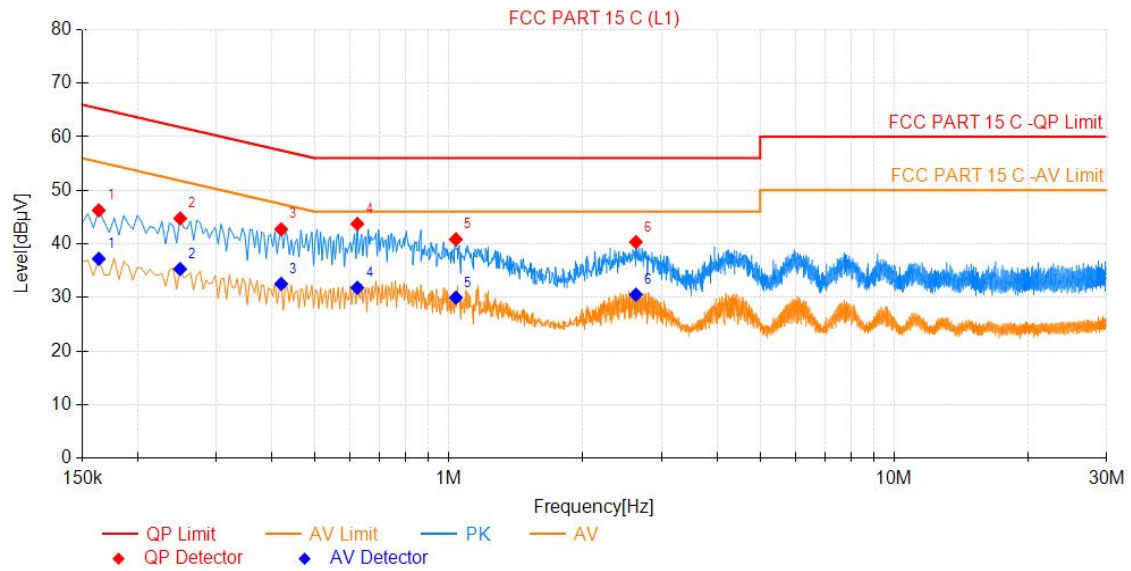
5.7 Conducted Emission Test Result

Pass.

All the modulation modes were tested the data of the worst mode (US11, CH3) are recorded in the following pages.



Line-AC 125V/60Hz

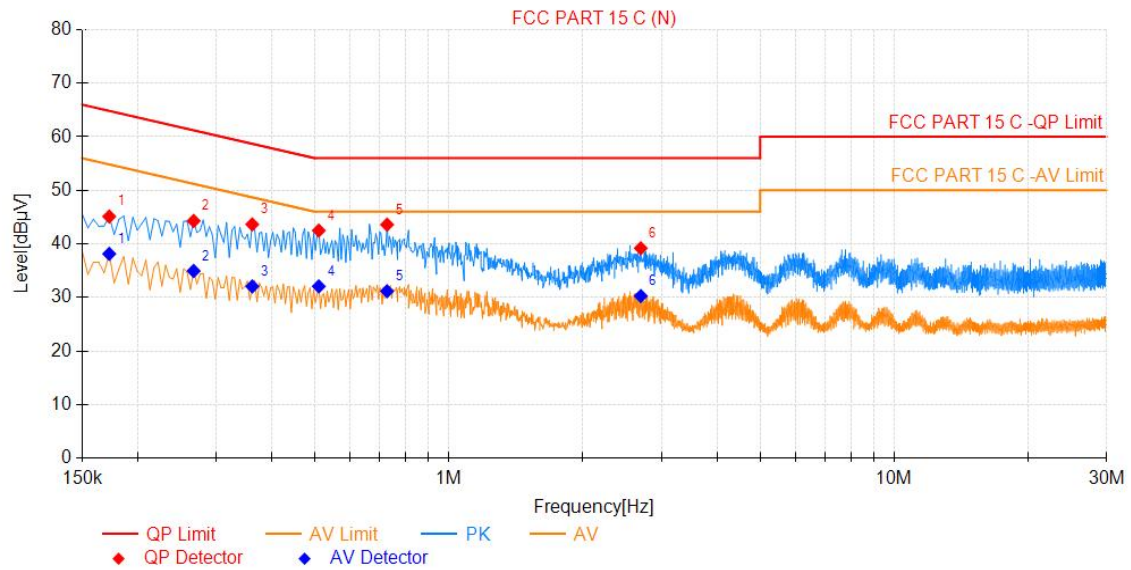


Final Data List

NO.	Freq. [MHz]	QP Reading [dBμV]	Factor [dB]	QP Value [dBμV]	QP Limit [dBμV]	QP Margin [dB]	AV Reading [dBμV]	AV Value [dBμV]	AV Limit [dBμV]	AV Margin [dB]	Verdict
1	0.164	26.70	19.56	46.26	65.28	19.02	17.64	37.20	55.28	18.08	PASS
2	0.249	25.25	19.50	44.75	61.79	17.04	15.80	35.30	51.79	16.49	PASS
3	0.420	23.01	19.72	42.73	57.45	14.72	12.81	32.53	47.45	14.92	PASS
4	0.623	24.02	19.71	43.73	56.00	12.27	12.09	31.80	46.00	14.20	PASS
5	1.037	21.31	19.54	40.85	56.00	15.15	10.42	29.96	46.00	16.04	PASS
6	2.630	20.90	19.44	40.34	56.00	15.66	11.07	30.51	46.00	15.49	PASS



Neutral-AC 125V/60Hz

**Final Data List**

NO.	Freq. [MHz]	QP Reading [dBμV]	Factor [dB]	QP Value [dBμV]	QP Limit [dBμV]	QP Margin [dB]	AV Reading [dBμV]	AV Value [dBμV]	AV Limit [dBμV]	AV Margin [dB]	Verdict
1	0.173	25.54	19.57	45.11	64.84	19.73	18.57	38.14	54.84	16.70	PASS
2	0.267	24.79	19.49	44.28	61.21	16.93	15.45	34.94	51.21	16.27	PASS
3	0.362	23.99	19.65	43.64	58.69	15.05	12.41	32.06	48.69	16.63	PASS
4	0.510	22.95	19.55	42.50	56.00	13.50	12.52	32.07	46.00	13.93	PASS
5	0.726	23.93	19.66	43.59	56.00	12.41	11.50	31.16	46.00	14.84	PASS
6	2.697	19.74	19.45	39.19	56.00	16.81	10.81	30.26	46.00	15.74	PASS

Note:1. All test mode have been tested. Only the worst case have been recorded in the report.

2.QP Margin[dB]= QP Limit[dBμV]- QP Value[dBμV], AV Margin[dB]= AV Limit[dBμV]- AV Value[dBμV].



6 Radiated Spurious Emissions

Test Requirement : FCC CFR47 Part 15 Section 15.209 & 15.247
Test Method : ANSI C63.10:2013
Test Result : PASS
Measurement Distance : 3m
Limit : See the follow table

Frequency (MHz)	Field Strength		Field Strength Limit at 3m Measurement Dist	
	uV/m	Distance (m)	uV/m	dBuV/m
0.009 ~ 0.490	$2400/F(\text{kHz})$	300	$10000 * 2400/F(\text{kHz})$	$20\log^{(2400/F(\text{kHz}))} + 80$
0.490 ~ 1.705	$24000/F(\text{kHz})$	30	$100 * 24000/F(\text{kHz})$	$20\log^{(24000/F(\text{kHz}))} + 40$
1.705 ~ 30	30	30	$100 * 30$	$20\log^{(30)} + 40$
30 ~ 88	100	3	100	$20\log^{(100)}$
88 ~ 216	150	3	150	$20\log^{(150)}$
216 ~ 960	200	3	200	$20\log^{(200)}$
Above 960	500	3	500	$20\log^{(500)}$

6.1 EUT Operation

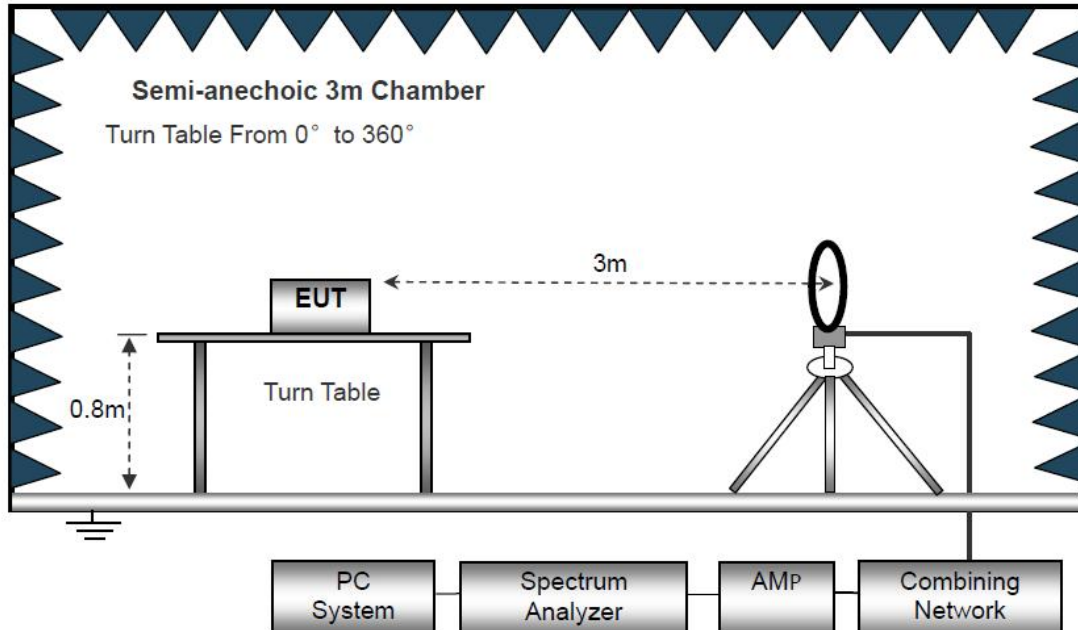
Operating Environment :

Temperature : 23.5 °C
Humidity : 51.1 % RH
Atmospheric Pressure : 101.2kPa

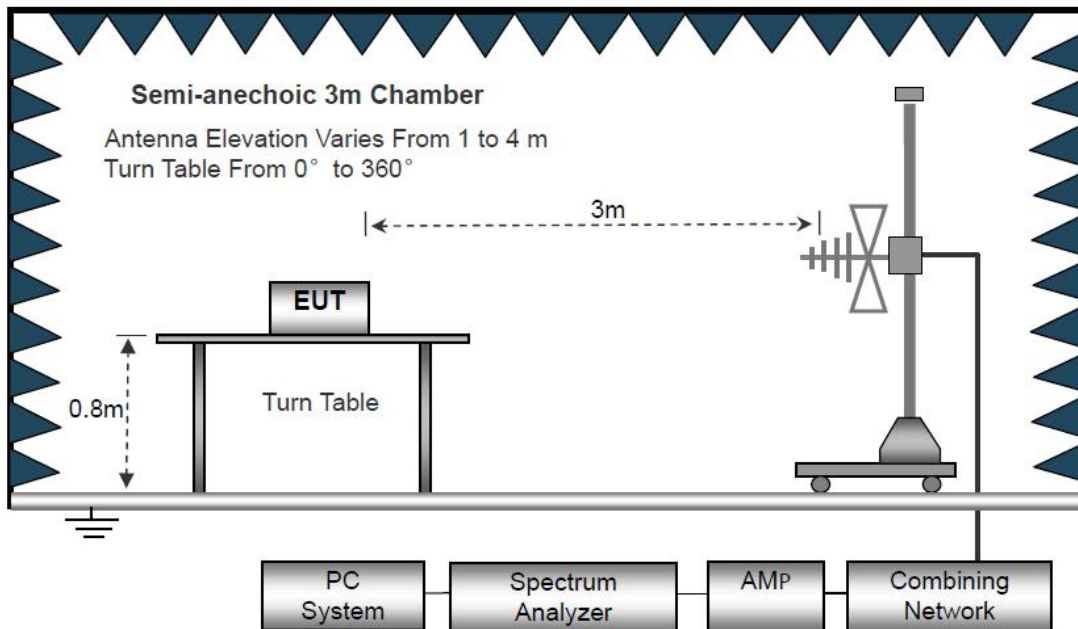
6.2 Test Setup

The radiated emission tests were performed in the 3m Semi- Anechoic Chamber test site

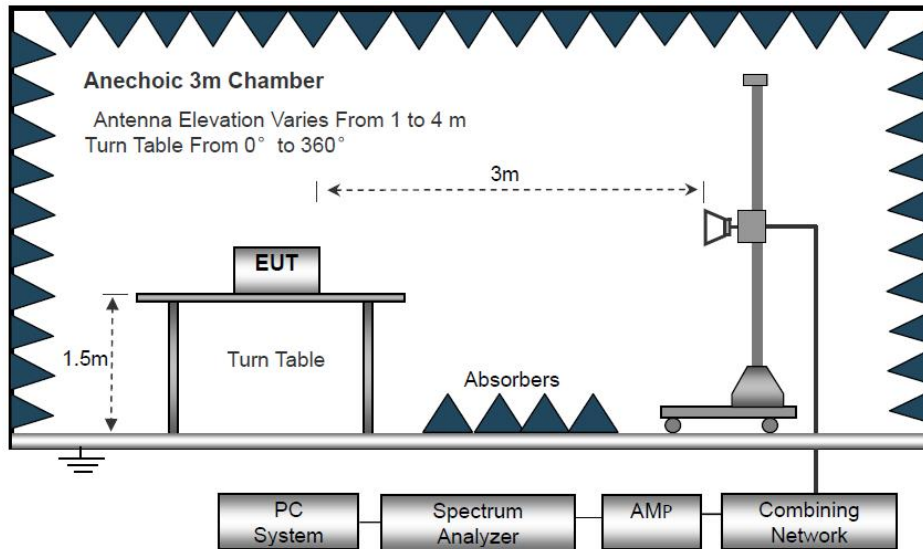
The test setup for emission measurement below 30MHz



The test setup for emission measurement from 30 MHz to 1 GHz.



The test setup for emission measurement above 1 GHz



6.3 Spectrum Analyzer Setup

	Frequency	Detector	RBW	VBW	Remark
Receiver Setup	Below 30MHz	--	10kHz	10kHz	--
	30MHz ~ 1GHz	Quasi-peak	120kHz	300kHz	Quasi-peak Value
	Above 1GHz	Peak	1MHz	3MHz	Peak Value
		RMS	1MHz	3MHz	Average Value



6.4 Test Procedure

1. The testing follows the guidelines in Spurious Radiated Emissions of ANSI C63.10-2013.
2. Below 1000MHz, The EUT was placed on a turn table which is 0.8m above ground plane. And above 1000MHz, The EUT was placed on a styrofoam table which is 1.5m above ground plane.
3. The EUT was set 3 meters from the interference receiving antenna, which was mounted on the top of a variable height antenna tower.
4. For each suspected emission, the EUT was arranged to its worst case and then tune the Antenna tower (From 1m to 4m) and turntable (from 0 degree to 360 degree) to find the maximum reading. A pre-amp and a high pass filter are used for the test in order to get better signal level to comply with the guidelines.
5. Set to the maximum power setting and enable the EUT transmit continuously.
6. Final measurement (Above 1GHz): The frequency range will be divided into different sub ranges depending of the frequency range of the used horn antenna. The EMI Receiver set to peak and average mode and a resolution bandwidth of 1MHz. The measurement will be performed in horizontal and vertical polarization of the measuring antenna and while rotating the EUT in its vertical axis in the range of 0 degree to 360 degree in order to have the antenna inside the cone of radiation.
7. Test Procedure of measurement (For Above 1GHz):
 - 1) Monitor the frequency range at horizontal polarization and move the antenna over all sides of the EUT(if necessary move the EUT to another orthogonal axis).
 - 2) Change the antenna polarization and repeat 1) with vertical polarization.
 - 3) Make a hardcopy of the spectrum.
 - 4) Measure the frequency of the detected emissions with a lower span and resolution bandwidth to increase the accuracy and note the frequency value.
 - 5) Change the analyser mode to Clear/ Write and found the cone of emission.
 - 6) Rotate and move the EUT, so that the measuring distance can be enlarged to 3m and the antenna will be still inside the cone of emission.
 - 7) Measure the level of the detected frequency with the correct resolution bandwidth, with the antenna polarization and azimuth and the peak and average detector, which causes the maximum emission.
 - 8) Repeat steps 1) to 7) for the next antenna spot if the EUT is larger than the antenna beamwidth.
8. The radiation measurements are tested under 3-axes(X,Y,Z) position(X denotes lying on the table, Y denotes side stand and Z denotes vertical stand), After pre-test, It was found that the worse radiation emission was get at the X position. So the data shown was the X position only.



6.5 Summary of Test Results

Test Frequency: 9KHz-30MHz

Note:

The amplitude of spurious emission that is attenuated by more than 20dB below the permissible limit has no need to be reported.

Distance extrapolation factor = $40\log(\text{Specific distance} / \text{test distance})$ (dB);

Limit line = Specific limits (dBuV) + distance extrapolation factor.

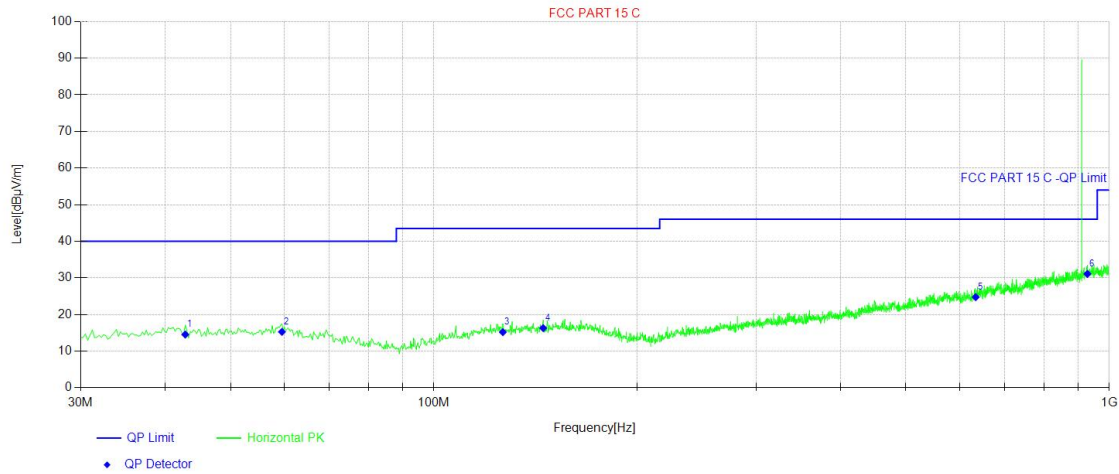
Test Frequency: 30MHz ~ 1GHz

Pass.

Please refer to the following test plots for the worst test mode (US11, CH3:912 MHz).



Antenna Polarization: Horizontal (US11, CH3:912 MHz)

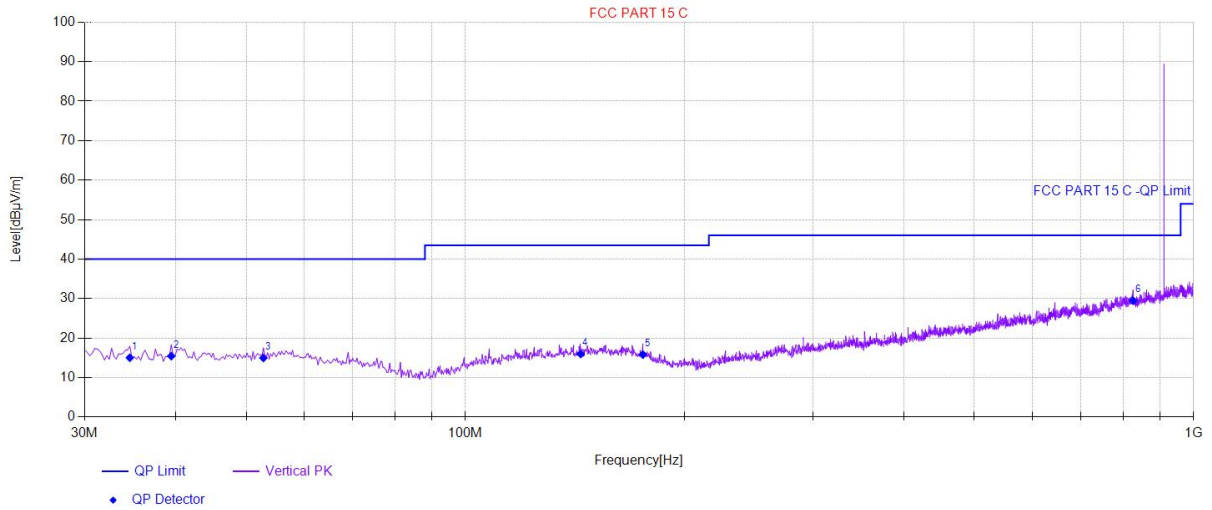


Final Data List[QP]								
NO.	Freq. [MHz]	QP Reading [dBμV/m]	Factor [dB]	QP Value [dBμV/m]	QP Limit [dBμV/m]	QP Margin [dB]	Polarity	Verdict
1	42.85	25.46	-10.92	14.54	40.00	25.46	Horizontal	PASS
2	59.59	26.69	-11.42	15.27	40.00	24.73	Horizontal	PASS
3	126.52	25.48	-10.28	15.20	43.50	28.30	Horizontal	PASS
4	145.19	26.13	-9.84	16.29	43.50	27.21	Horizontal	PASS
5	634.31	25.84	-1.08	24.76	46.00	21.24	Horizontal	PASS
6	928.22	26.06	5.04	31.10	46.00	14.90	Horizontal	PASS

Remark: Emission Level = Reading + Cable Loss + ANT Factor - AMP Factor



Antenna Polarization: Vertical (US11, CH3:912 MHz)



Final Data List[QP]								
NO.	Freq. [MHz]	QP Reading [dBμV/m]	Factor [dB]	QP Value [dBμV/m]	QP Limit [dBμV/m]	QP Margin [dB]	Polarity	Verdict
1	34.61	26.77	-11.74	15.03	40.00	24.97	Vertical	PASS
2	39.46	26.64	-11.20	15.44	40.00	24.56	Vertical	PASS
3	52.80	25.8	-10.83	14.97	40.00	25.03	Vertical	PASS
4	143.98	25.81	-9.84	15.97	43.50	27.53	Vertical	PASS
5	175.26	26.19	-10.35	15.84	43.50	27.66	Vertical	PASS
6	825.89	26.44	3.04	29.48	46.00	16.52	Vertical	PASS

Remark:Emission Level=Reading+Cable Loss+ANT Factor-AMP Factor



Test Frequency 1GHz-10GHz:

US11, CH3:

Frequency	Antenna	Reading	Cable Loss	Ant Factor	Amplifier	Level	Limits	Margin	Det.
(MHz)	Pol.	(dBuV)	(dB)	(dB/m)	(dB)	(dBuV/m)	(dBuV/m)	(dB)	Mode
1832.00	H	47.43	6.58	34.04	34.09	53.96	74	20.04	PK
1832.00	H	31.70	6.58	34.04	34.09	38.23	54	15.77	AV
2748.00	H	39.60	7.73	37.11	34.79	49.65	74	24.35	PK
2748.00	H	34.28	7.73	37.11	34.79	44.33	54	9.67	AV
1832.00	V	42.69	6.58	35.28	34.09	50.46	74	23.54	PK
1832.00	V	24.62	6.58	35.28	34.09	32.39	54	21.61	AV
2748.00	V	36.82	7.73	39.31	34.79	49.07	74	24.93	PK
2748.00	V	22.49	7.73	39.31	34.79	34.74	54	19.26	AV

Note: 1. The testing has been conformed to $10 \times 912.00\text{MHz} = 9120\text{MHz}$.

2. All other emissions more than 30dB below the limit.
3. Factor = Antenna Factor + Cable Loss – Pre-amplifier.
 Emission Level = Reading + Factor
 Margin=Limit-Emission Level



US12, CH3:

Frequency	Antenna	Reading	Cable Loss	Ant Factor	Amplifier	Level	Limits	Margin	Det.
(MHz)	Pol.	(dBuV)	(dB)	(dB/m)	(dB)	(dBuV/m)	(dBuV/m)	(dB)	Mode
1840.00	H	45.98	6.58	34.04	34.09	52.51	74	21.49	PK
1840.00	H	31.97	6.58	34.04	34.09	38.50	54	15.5	AV
2760.00	H	40.19	7.73	37.11	34.79	50.24	74	23.76	PK
2760.00	H	33.64	7.73	37.11	34.79	43.69	54	10.31	AV
1840.00	V	40.96	6.58	35.28	34.09	48.73	74	25.27	PK
1840.00	V	25.25	6.58	35.28	34.09	33.02	54	20.98	AV
2760.00	V	38.22	7.73	39.31	34.79	50.47	74	23.53	PK
2760.00	V	24.23	7.73	39.31	34.79	36.48	54	17.52	AV

Note: 1. The testing has been conformed to 10*920.00MHz=9200MHz.

2. All other emissions more than 30dB below the limit.
3. Factor = Antenna Factor + Cable Loss – Pre-amplifier.
 Emission Level = Reading + Factor
 Margin=Limit-Emission Level

**Radiated Restricted Band:**

Test Mode: Channel 912MHz							
Frequency (MHz)	Read Level (dBuV)	Corr. Factor (dB/m)	Level (dBuV/m)	Limit (dBuV/m)	Margin (dB)	Polarity H/V	Detector
902	24.85	-2.97	21.88	46	24.12	H	Peak
928	23.65	-2.51	21.14	46	24.86	H	Peak
902	23.88	-2.97	20.91	46	25.09	V	Peak
928	24.35	-2.51	21.84	46	24.16	V	Peak

Test Mode: Channel 920MHz							
Frequency (MHz)	Read Level (dBuV)	Corr. Factor (dB/m)	Level (dBuV/m)	Limit (dBuV/m)	Margin (dB)	Polarity H/V	Detector
902	24.75	-2.97	21.78	46	24.22	H	Peak
928	23.72	-2.51	21.21	46	24.79	H	Peak
902	23.77	-2.97	20.8	46	25.2	V	Peak
928	24.24	-2.51	21.73	46	24.27	V	Peak



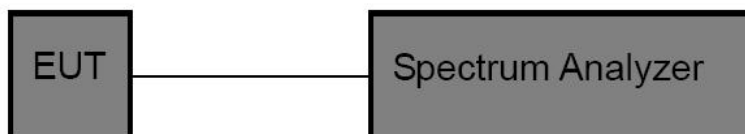
7 Conduct Band Edge And Spurious Emissions Measurement

Test Requirement	: Section 15.247(d) In addition, radiated emissions which fall in the restricted bands, as defined in Section 15.205(a), must also comply with the radiated emission limits specified in Section 15.209(a) (see Section 15.205(c)).
Test Method	: ANSI C63.10:2013
Test Limit	: Regulation 15.247 (d), In any 100 kHz bandwidth outside the frequency band in which the spread spectrum or digitally modulated intentional radiator is operating, the radio frequency power that is produced by the intentional radiator shall be at least 20 dB below that in the 100 kHz bandwidth within the band that contains the highest level of the desired power, based on either an RF conducted or a radiated measurement, provided the transmitter demonstrates compliance with the peak conducted power limits. If the transmitter complies with the conducted power limits based on the use of RMS averaging over a time interval, as permitted under paragraph (b)(3) of this section, the attenuation required under this paragraph shall be 30 dB instead of 20 dB. Attenuation below the general limits specified in §15.209(a) is not required. In addition, radiated emissions which fall in the restricted bands, as defined in §15.205(a), must also comply with the radiated emission limits specified in §15.209(a) (see §15.205(c)).

7.1 Test Procedure

1. Remove the antenna from the EUT and then connect a low RF cable from the antenna port to the spectrum;
2. Set the spectrum analyzer: RBW = 100kHz, VBW = 300kHz, Sweep = auto
Detector function = peak, Trace = max hold

7.2 Test Setup



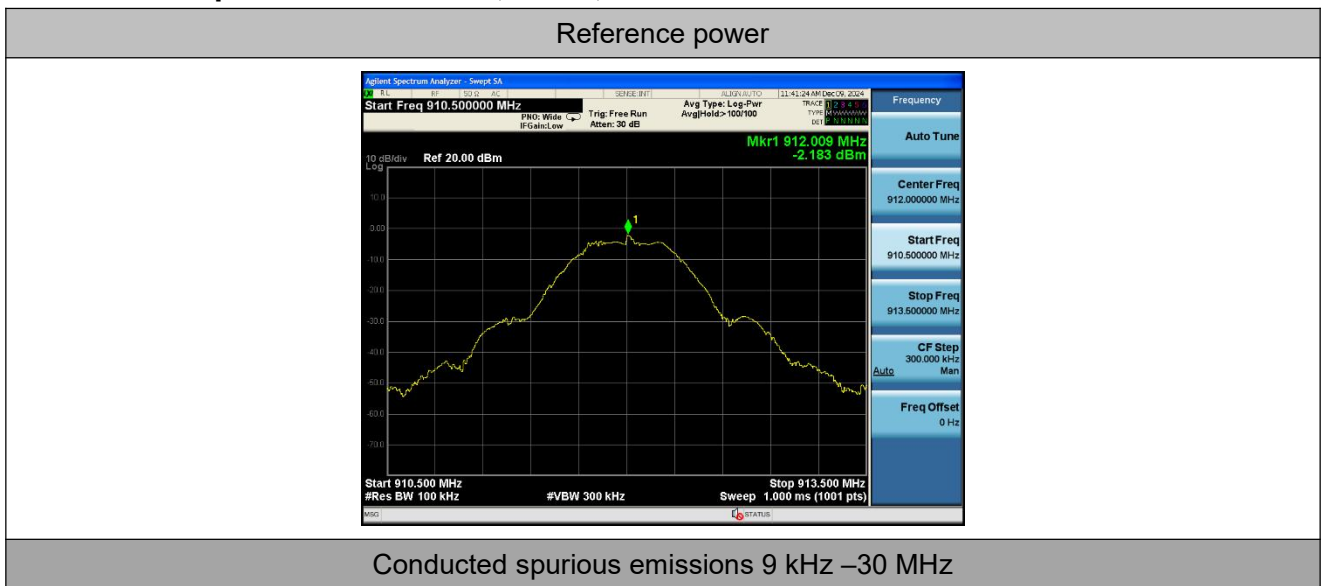


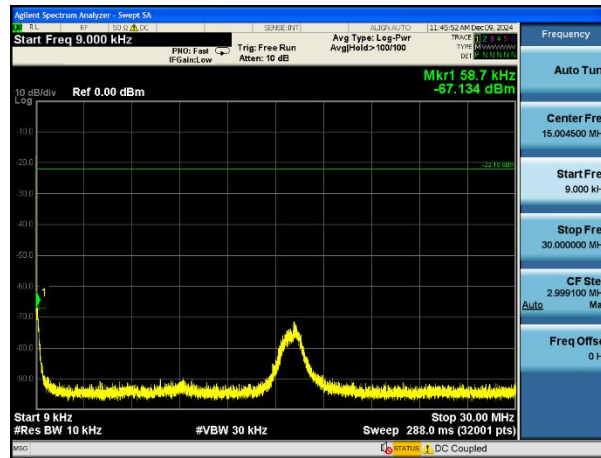
7.3 Test Result

TestMode	Frequency[MHz]	Freq Range	RefLevel [dBm]	Result[dBm]	Limit[dBm]	Verdict
US11, CH3	912	0~Reference	-2.183	-2.183	---	PASS
US11, CH3	912	9 kHz~30MHz	-2.183	-67.134	≤-22.18	PASS
US11, CH3	912	30 MHz~12750MHz	-2.183	-61.832	≤-22.18	PASS
US12, CH3	920	0~Reference	-0.435	-0.435	---	PASS
US12, CH3	920	9 kHz~30MHz	-0.435	-47.382	≤-20.43	PASS
US12, CH3	920	30 MHz~12750MHz	-0.435	-56.343	≤-20.43	PASS

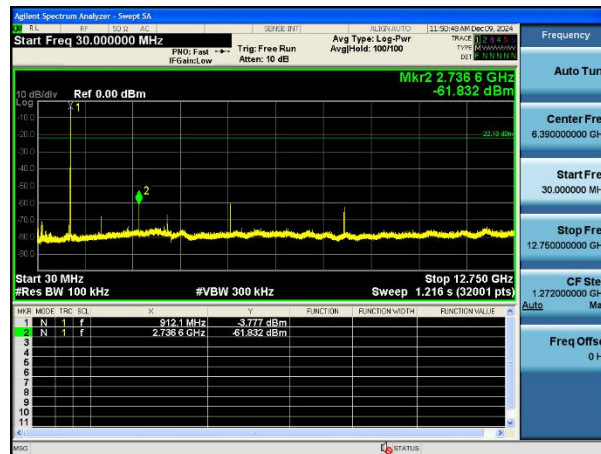
Test Graphs:

Conducted spurious emissions, US11, CH3:





Conducted spurious emissions 30 MHz –12750 MHz



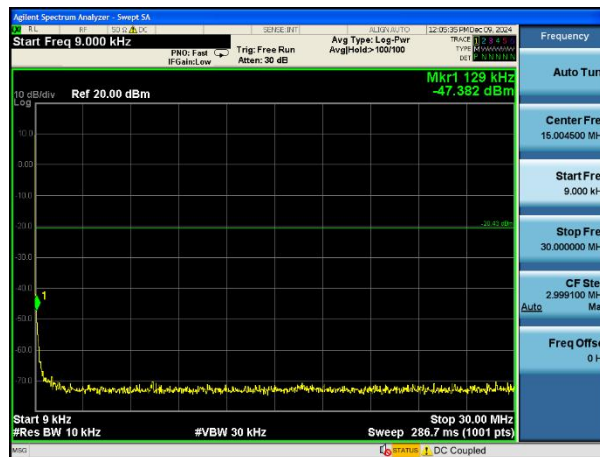


Conducted spurious emissions, US12, CH3:

Reference power



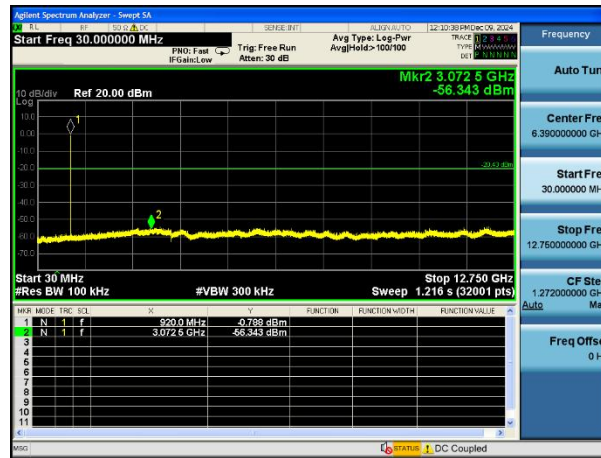
Conducted spurious emissions 9 kHz –30 MHz



Conducted spurious emissions 30 MHz –12750 MHz



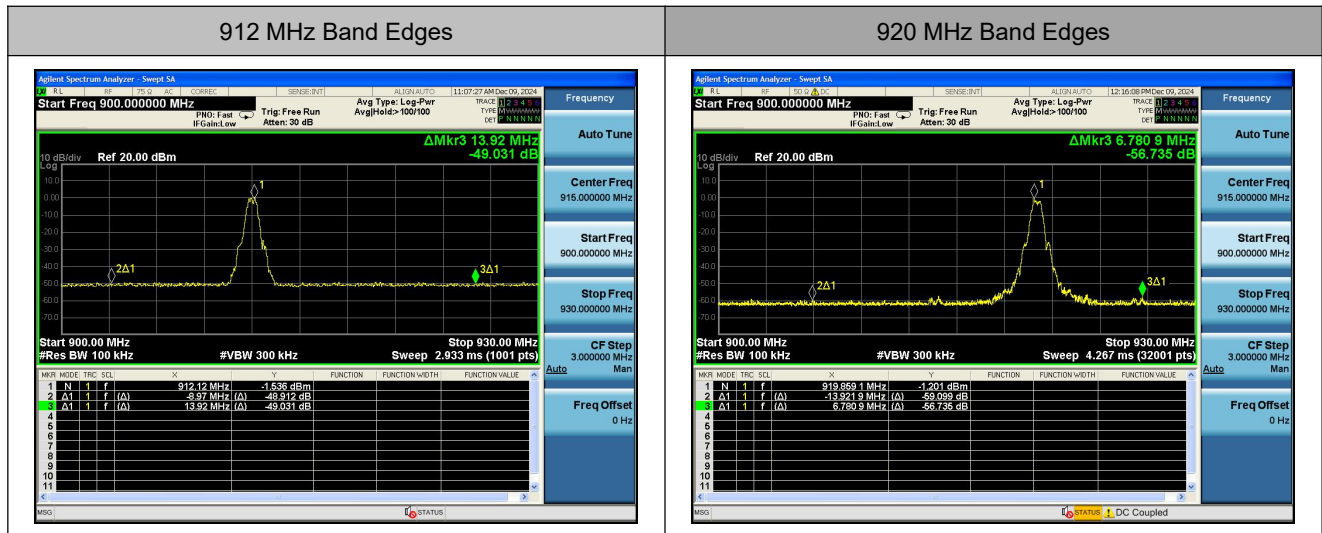
Report No.: PTC24102501101E-FC02





Band edge:

Test Mode	Result[dBm]	Limit[dBm]	Verdict
US11, CH3	-48.912	-21.536	PASS
US12, CH3	-56.735	-21.201	PASS





8 6dB Bandwidth Measurement

Test Requirement : FCC CFR47 Part 15 Section 15.247

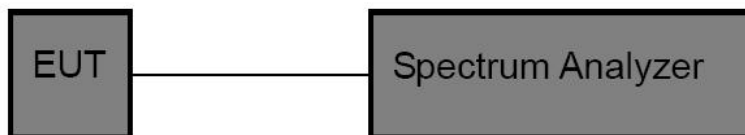
Test Method : ANSI C63.10:2013

Test Limit : Systems using digital modulation techniques may operate in the 902-928 MHz, 2400-2483.5 MHz, and 5725-5850 MHz bands. The minimum 6 dB bandwidth shall be at least 500 kHz.

Test Procedure

1. Remove the antenna from the EUT and then connect a low RF cable from the antenna port to the spectrum;
2. Set the spectrum analyzer: RBW = 100kHz, VBW = 300kHz

Test Setup

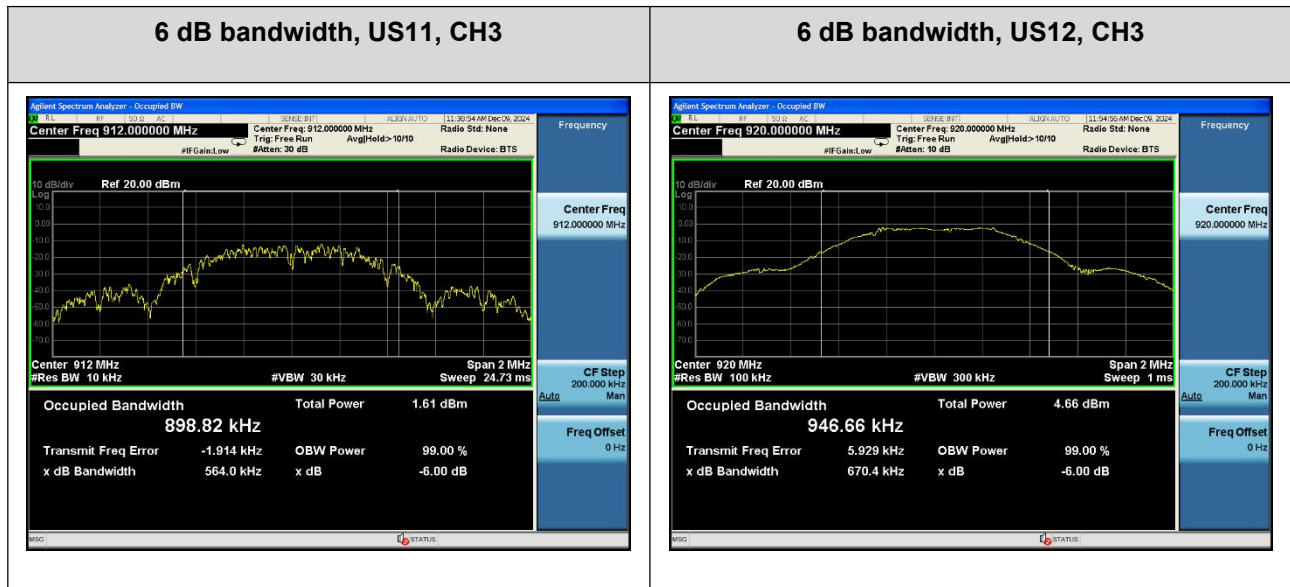


Test Result

Test Mode	Frequency[MHz]	6dB Bandwidth [kHz]	Minimum Limit[kHz]	Verdict
US11, CH3	912	564.0	500	PASS
US12, CH3	920	670.4	500	PASS



Test Graphs:





9 Maximum Peak Output Power

Test Requirement : FCC CFR47 Part 15 Section 15.247

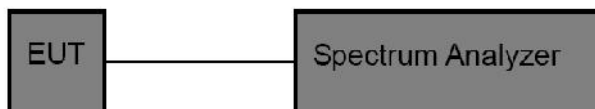
Test Method : ANSI C63.10:2013

Test Limit : Regulation 15.247 (b)(3), For systems using digital modulation in the 902-928 MHz, 2400-2483.5 MHz, and 5725-5850 MHz bands: 1 Watt. As an alternative to a peak power measurement, compliance with the one Watt limit can be based on a measurement of the maximum conducted output power.

9.1 Test Procedure

1. The RF output of EUT was connected to the spectrum analyzer by RF cable and attenuator. The path loss was compensated to the results for each measurement.
2. Set to the maximum power setting and enable the EUT transmit continuously.
3. Measure the conducted output power and record the results in the test report.

9.2 Test Setup

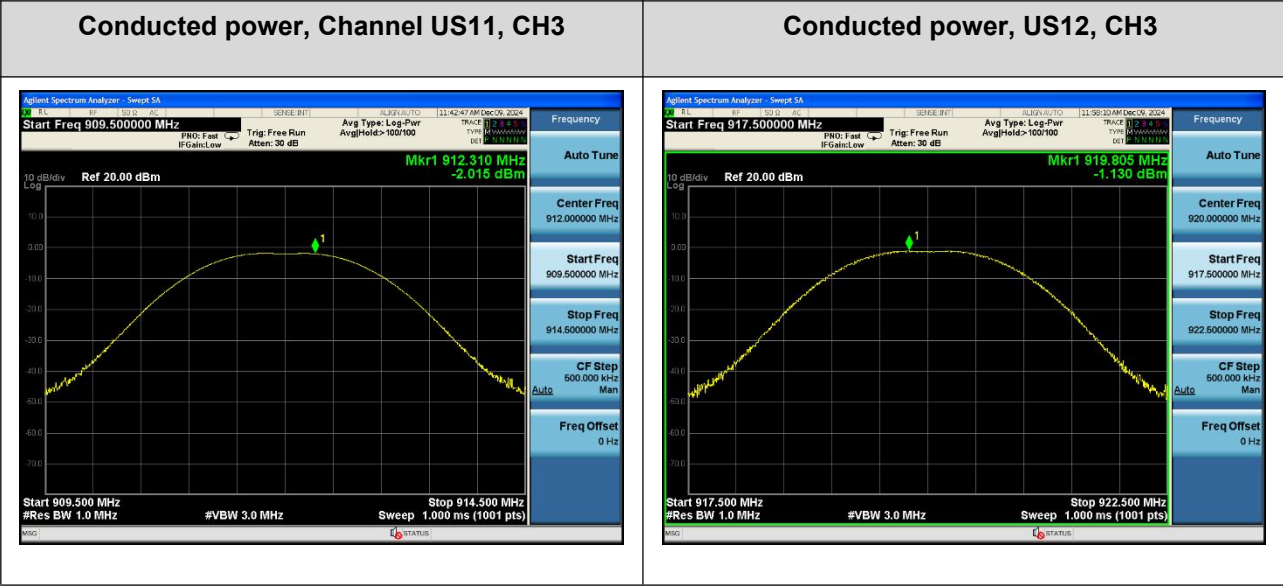


9.3 Test Result

Test Mode	Conducted Power [dBm]	Limit [dBm]	Margin [dB]	Verdict
US11, CH3	-2.015	30	32.015	PASS
US12, CH3	-1.130	30	31.130	PASS



Test Graphs:





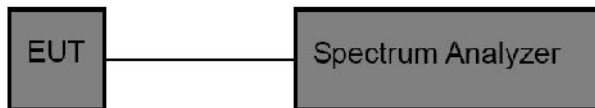
10 Power Spectral density

Test Requirement	: FCC CFR47 Part 15 Section 15.247
Test Method	: ANSI C63.10:2013
Test Limit	: Regulation 15.247(f) The power spectral density conducted from the intentional radiator to the antenna due to the digital modulation operation of the hybrid system, with the frequency hopping operation turned off, shall not be greater than 8 dBm in any 3 kHz band during any time interval of continuous transmission.

10.1 Test Procedure

1. Remove the antenna from the EUT and then connect a low RF cable from the antenna port to the spectrum.
2. Set the spectrum analyzer: RBW = 3kHz. VBW = 10kHz , Span = 1.5 times the DTS channel bandwidth(6 dB bandwidth). Sweep = auto; Detector Function = Peak. Trace = Max hold.
3. Allow the trace to stabilize. Use the marker-delta function to determine the separation between the peaks of the adjacent channels. The limit is specified in one of the subparagraphs of this Section Submit this plot.

10.2 Test Setup

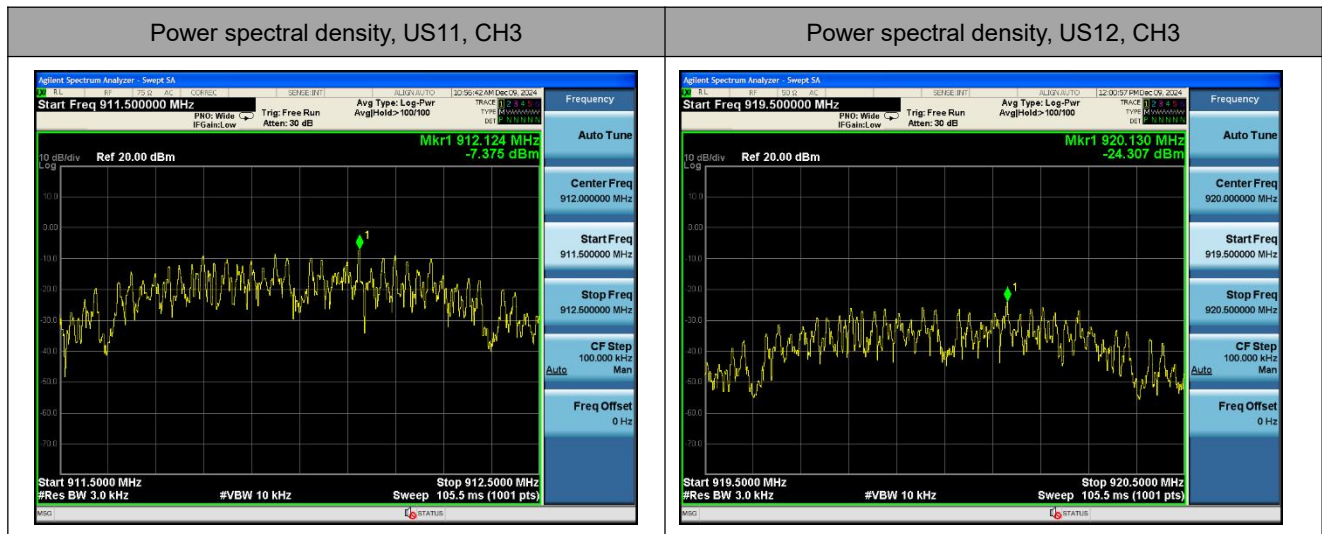


10.3 Test Result

Test Mode	Result[dBm/3kHz]	Limit[dBm/3kHz]	Verdict
US11, CH3	-7.375	≤8.00	PASS
US12, CH3	-24.307	≤8.00	PASS



Test Graphs:





11 Antenna Application

11.1 Antenna Requirement

For intentional device, according to FCC 47 CFR Section 15.203, an intentional radiator shall be designed to ensure that no antenna other than that furnished by the responsible party shall be used with the device. And according to FCC 47 CFR Section 15.247 (b), if transmitting antennas of directional gain greater than 6dBi are used, the power shall be reduced by the amount in dB that the directional gain of the antenna exceeds 6dBi.

11.2 Result

The EUT'S antenna, permanent attached antenna, is internal PCB antenna. The antenna's gain is -11.59 dBi and meets the requirement.

12 Test Setup

Conducted Emissions



Radiated Spurious Emissions
Test Frequency From Below 30MHz

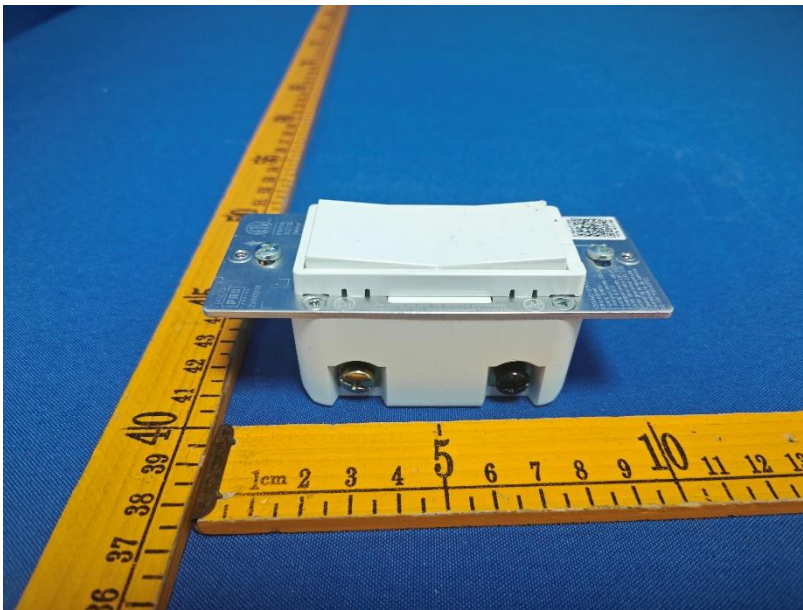
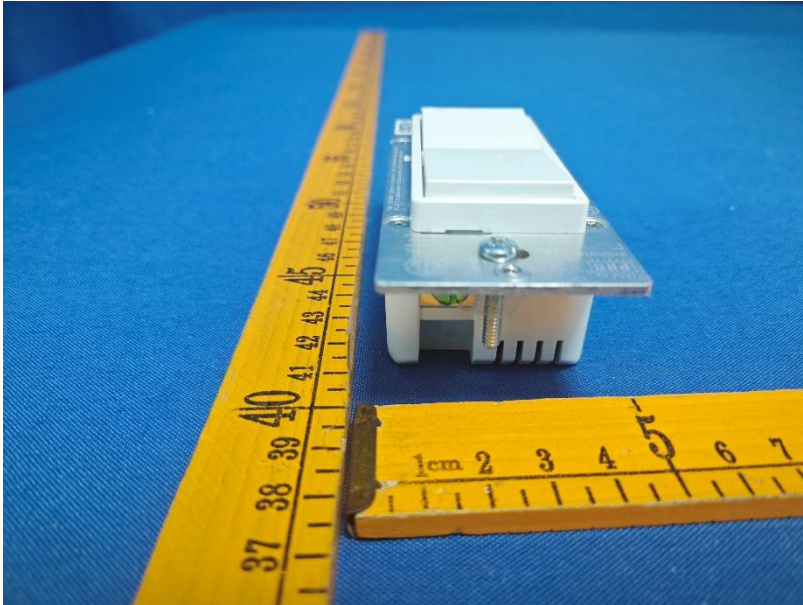


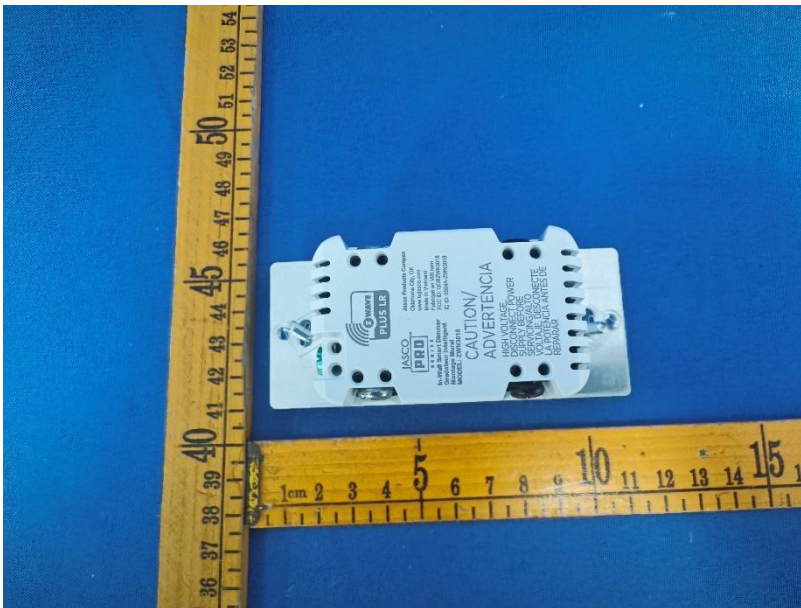
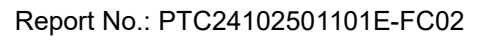
Test frequency from Above 1GHz

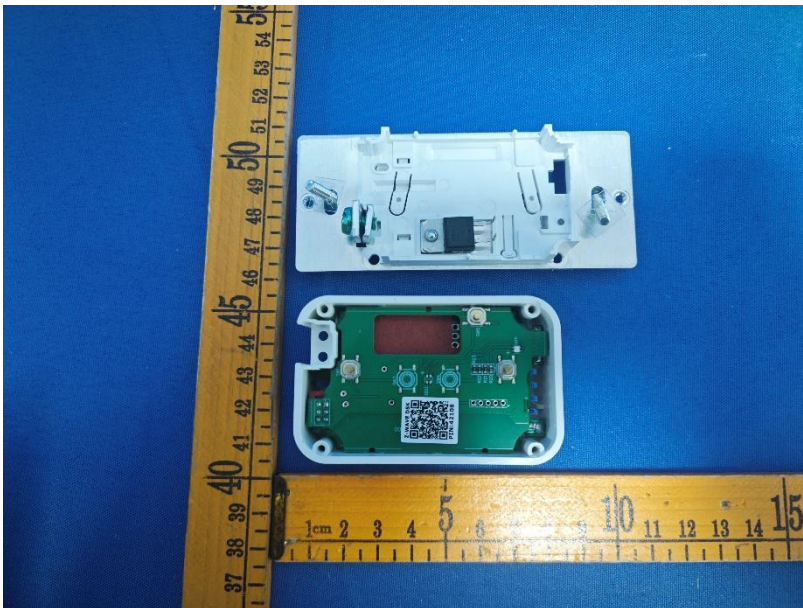
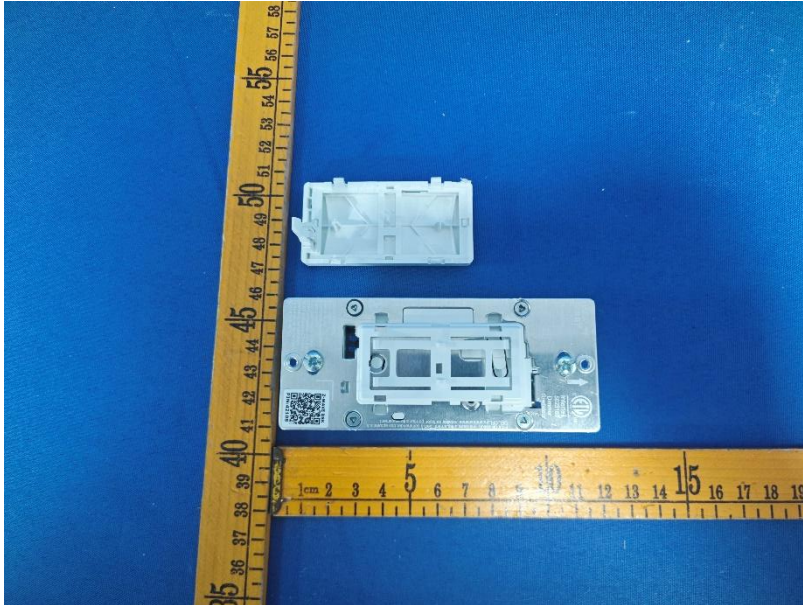


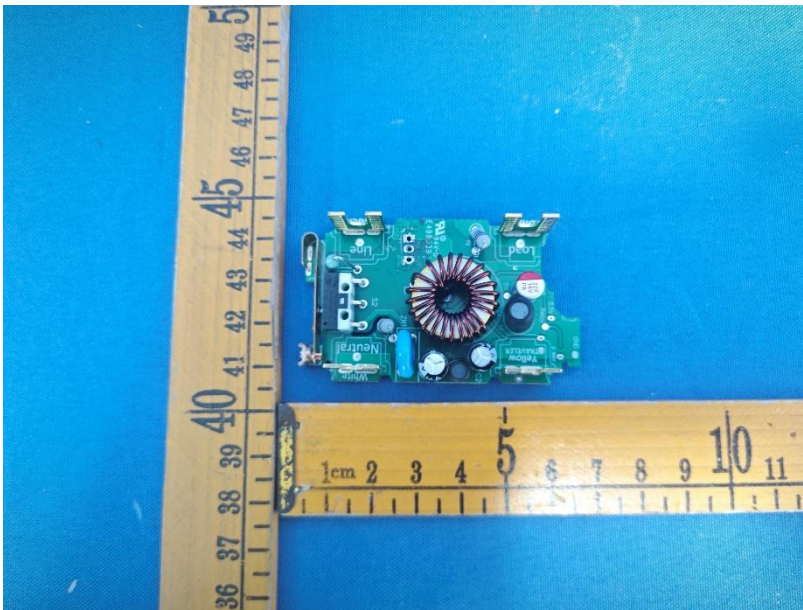
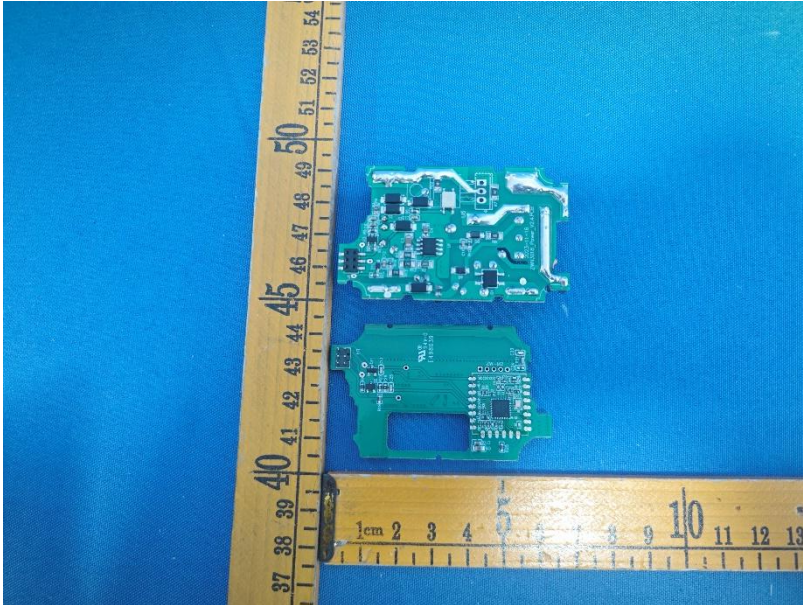
13 EUT Photos

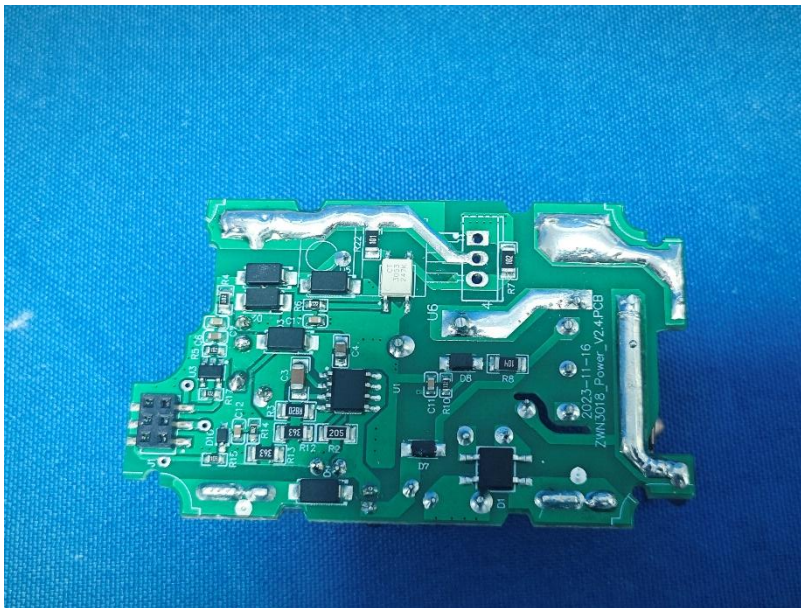
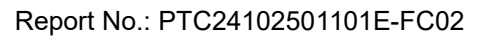


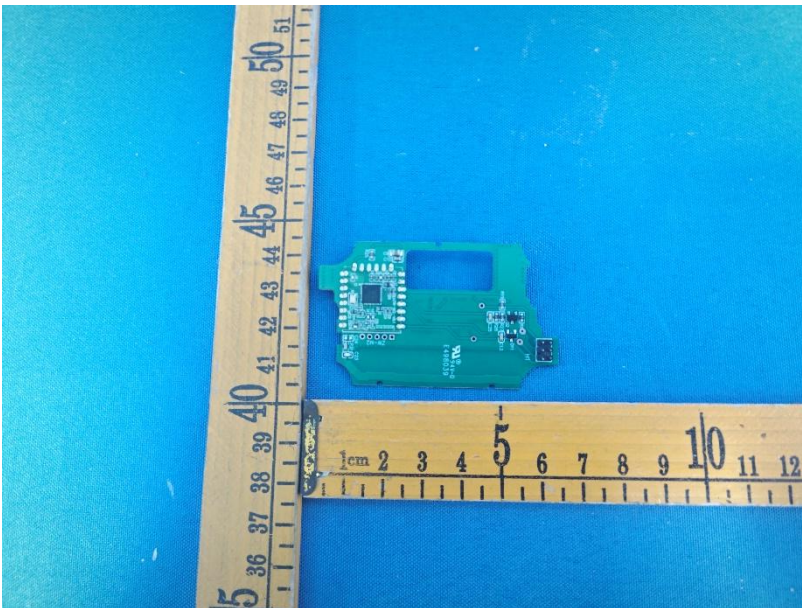
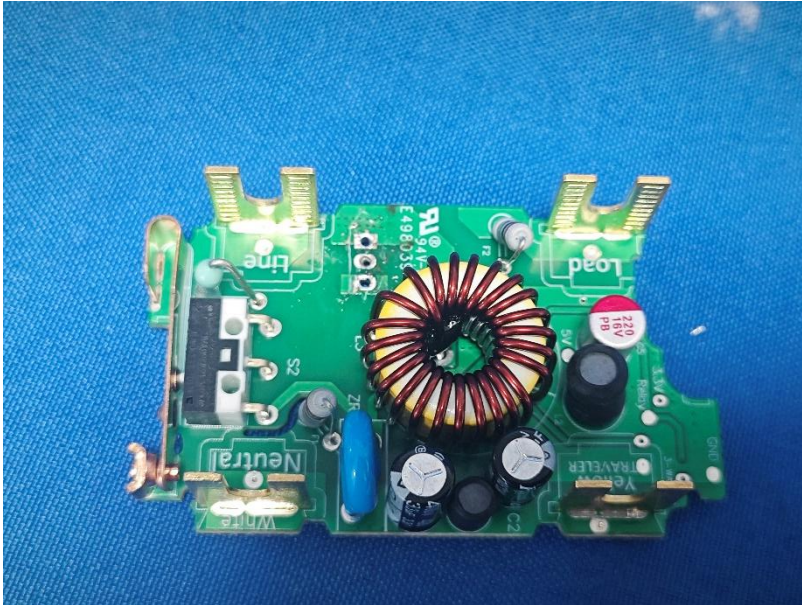


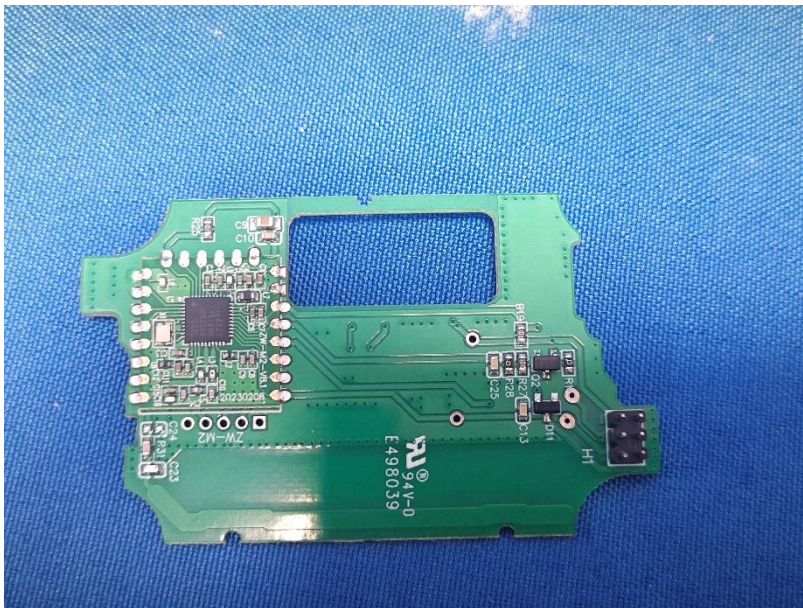
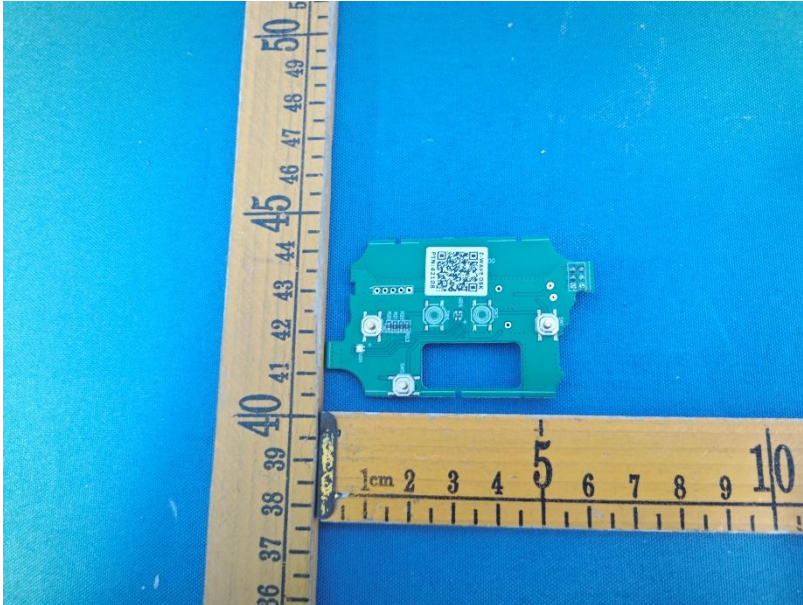


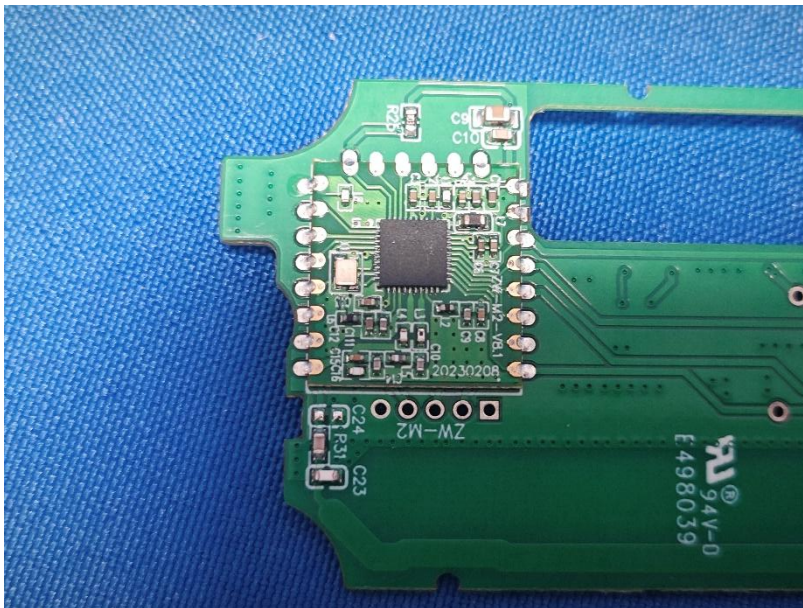
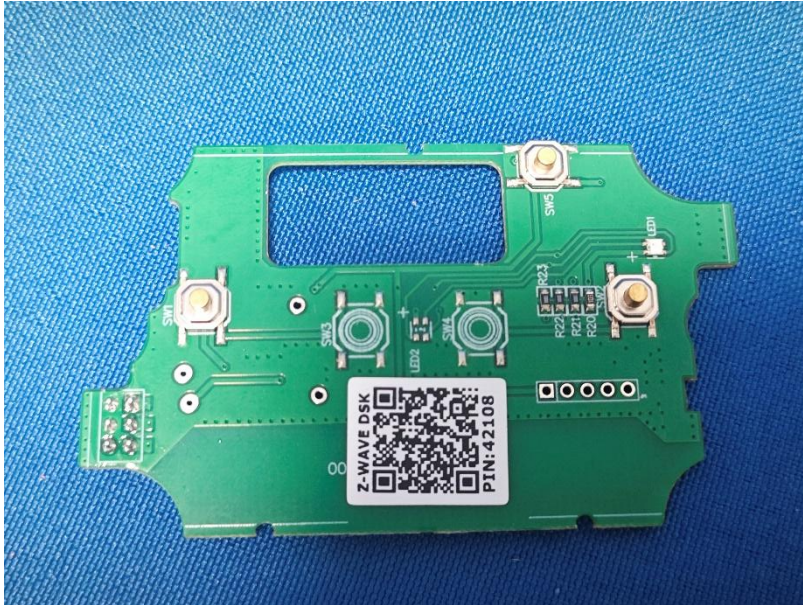












*****THE END REPORT*****