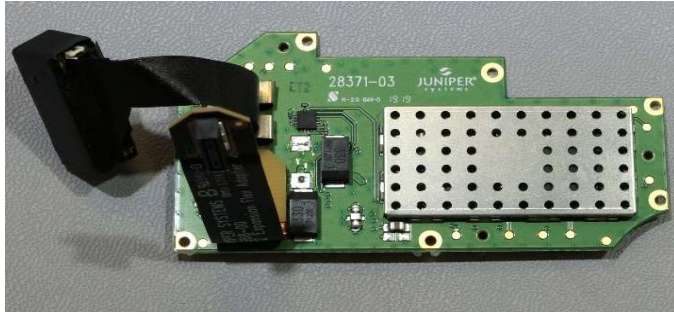
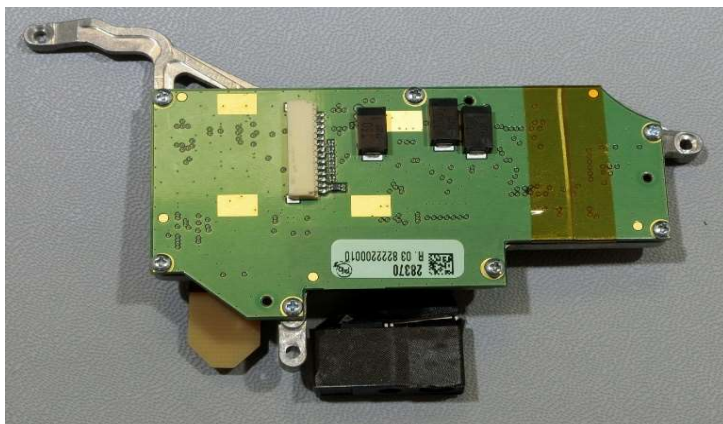


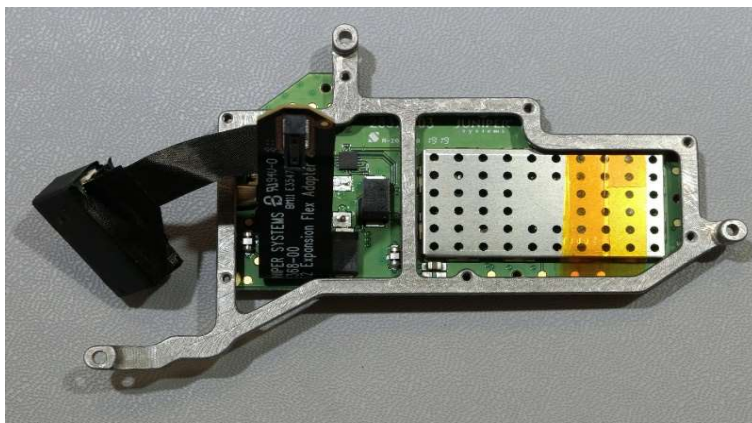
Expansion PCB



Expansion PCB with mounting bracket



Expansion PCB with mounting bracket



A detailed view of the internal components of a mobile phone. The central green printed circuit board (PCB) is populated with various electronic components, including a large black integrated circuit (likely the processor), smaller chips, and capacitors. A black flexible display ribbon cable is connected to the top of the board. To the right, a silver-colored metal shield covers the camera module. Below the main board, a red PCB with a white label is visible, likely the baseband or power management IC. The entire assembly is housed within a grey plastic frame, with various connectors and cables visible along the edges.

The image shows the back of a Juniper J133W camera. A large, black, textured plastic cover is partially detached from the bottom right corner, revealing the camera lens and a white flash unit. The camera body is dark grey or black. On the left side, there is a label with the Juniper logo and the text "J133W 1200mAh camera (F1.8-3.1) USA". The back of the camera features several screws, a small speaker grille, and a sliding cover for the lens.

TransCore module connected



TransCore Module in place

