

Telstra

Connection - Telstra is a service used in Australia only. If you are using this service, select **Telstra** from the drop-down menu.

User Name - Enter the User Name provided by your ISP.

Password - Enter the Password provided by your ISP.

Confirm - To confirm the Password, enter it again in this field.

Heart Beat Server - Enter the IP address of the Heart Beat Server server you are using (this should be provided by your ISP).

Keep Alive - If you want the Router to periodically check your Internet connection, select **Keep Alive**. Then specify how often you want the Router to check the Internet connection. If the connection is down, the Router will automatically re-establish your connection.

Connect on Demand - If you want the Router to end the Internet connection after it has been inactive for a period of time, select **Connect on Demand** and designate the number of minutes you want that period of inactivity to last.

Click the **Next** button to continue or the **Back** button to return to the previous screen.

The screenshot shows the 'Advanced Internet Settings' screen for the Telstra connection type. At the top, the Linksys logo and a large number '8' are visible. A warning message states: 'Your Internet connection must be configured manually. Please contact your ISP and select the proper Internet Connection type.' Below this, there is a 'Connection' dropdown menu set to 'Telstra'. To the right of the dropdown, instructions say: 'Enter the User Name and Password as instructed by your ISP. Confirm the password by entering the password again in the Confirm field.' There are four input fields: 'User Name', 'Password', 'Confirm', and 'Heart Beat Server'. Below these fields, there are two radio button options: 'Keep Alive' (selected) and 'Connect on Demand'. To the right of these options, there are time interval fields: 'seconds' for Keep Alive and 'minutes' for Connect on Demand. Further right, instructions explain: 'Choose Keep Alive and specify a time interval to always keep the Internet connection active. Choose Connect on Demand to disconnect from the Internet after a period of inactivity.' At the bottom of the screen, there are three buttons: 'Exit', 'Back', and 'Next'. The footer of the screen displays 'Wireless-G Broadband Router with SpeedBooster', 'Setup Wizard', and 'Model No. WRT54GS'.

Figure 5-16: Setup Wizard's Advanced Internet Settings - Telstra Screen

12. The Router provides a Web-based Utility you can use for configuring the Router from any networked PC.

Password - Enter a password that will control access to the Utility.

Confirm - Enter the password again in the *Confirm* field.

Click the **Next** button to continue or the **Back** button to return to the previous screen.

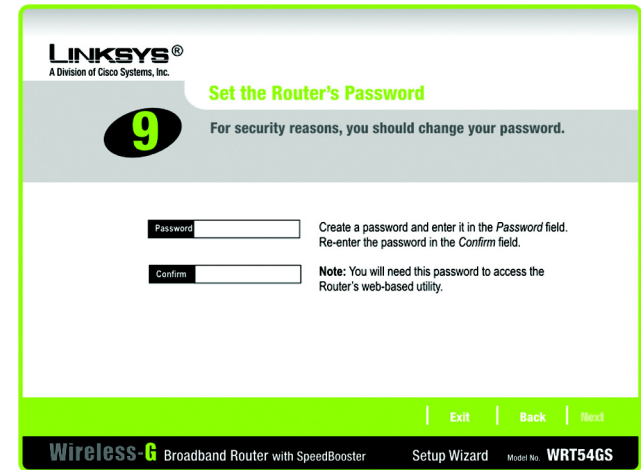


Figure 5-17: Setup Wizard's Set the Router's Password Screen

13. There are two ways to configure the Router's wireless settings, SecureEasySetup and manual configuration.

If you have other SecureEasySetup devices, such as notebook adapters or printers, then you can use the Router's SecureEasySetup feature to create your wireless network. Proceed to the section, "Using the Router's SecureEasySetup Feature."

If you do not have other SecureEasySetup devices, then proceed to the section, "Manually Configuring the Router's Wireless Settings."

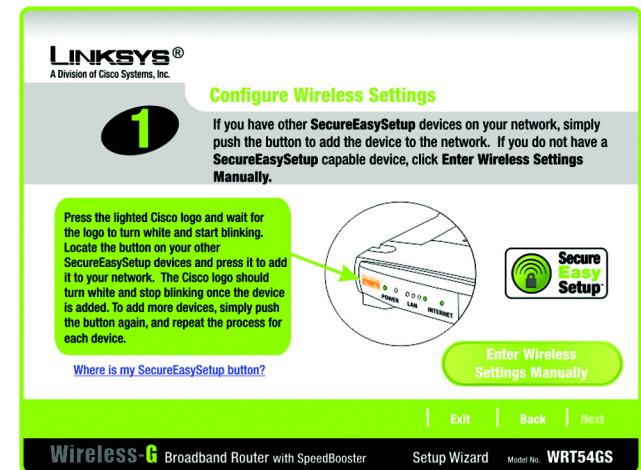


Figure 5-18: Setup Wizard's Configure Wireless Settings Screen

Using the Router's SecureEasySetup Feature

Read these instructions before you press any SecureEasySetup buttons. You should locate the SecureEasySetup buttons of your devices before using the Router's SecureEasySetup feature.



NOTE: SecureEasySetup uses WPA-Personal encryption. If your current wireless devices do not support WPA-Personal security, then you cannot use SecureEasySetup on your network. You will need to manually configure your network security using the encryption supported by your existing devices.

1. Before you push any button, locate the SecureEasySetup button for each of your other SecureEasySetup devices. If you are not sure where to find this button, click **Where is my other SecureEasySetup button?**

You will see a screen showing the SecureEasySetup logo. Click the **Next** button to continue or the **Close** button to return to the *Configure Wireless Settings* screen.

You will see a screen with instructions on how to locate the SecureEasySetup hardware button. If your device does not have a hardware button, it most likely will have a software button. Click the **Next** button for instructions to locate the software button, or click the **Close** button to return to the *Configure Wireless Settings* screen.

You will see a screen with instructions on how to locate the SecureEasySetup software button. Click the **Close** button to return to the *Configure Wireless Settings* screen.

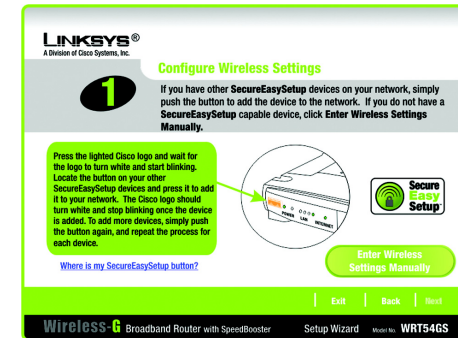


Figure 5-19: Setup Wizard's SecureEasySetup Screen



Figure 5-20: SecureEasySetup Logo

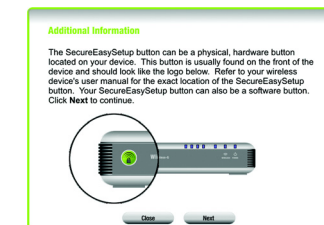


Figure 5-21: Additional Information - Hardware Button

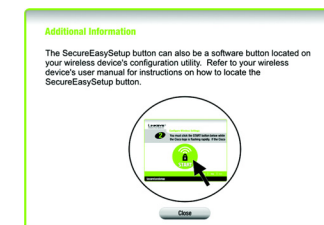


Figure 5-22: Additional Information - Software Button

2. Press the Router's orange Cisco logo on its front panel. When the logo turns white and begins to flash, press the SecureEasySetup button on another device. The Router's Cisco logo will stop flashing when the device has been added to the network. Then repeat this procedure for each additional SecureEasySetup device.

When you have finished configuring the devices in your wireless network, click the **Next** button to continue.



NOTE: You can only add one SecureEasySetup device at a time.

3. The Setup Wizard will ask you to review your settings before it saves them. Write down these settings if you need to manually configure any non-SecureEasySetup devices.

Click the **Yes** button if you are satisfied with your settings, or click the **No** button if you do not want to save your new settings.

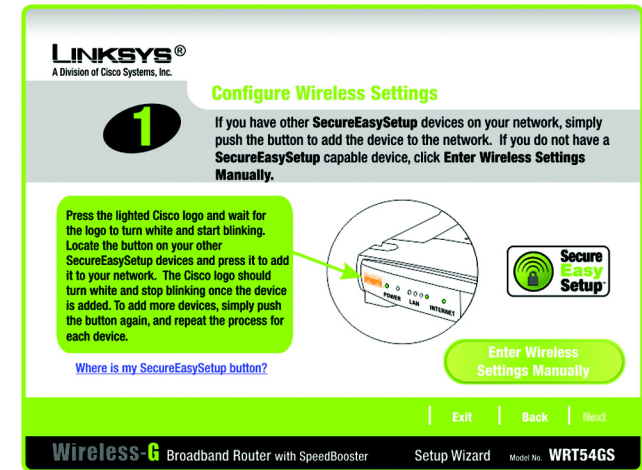


Figure 5-23: Setup Wizard's Configure Wireless Settings Screen

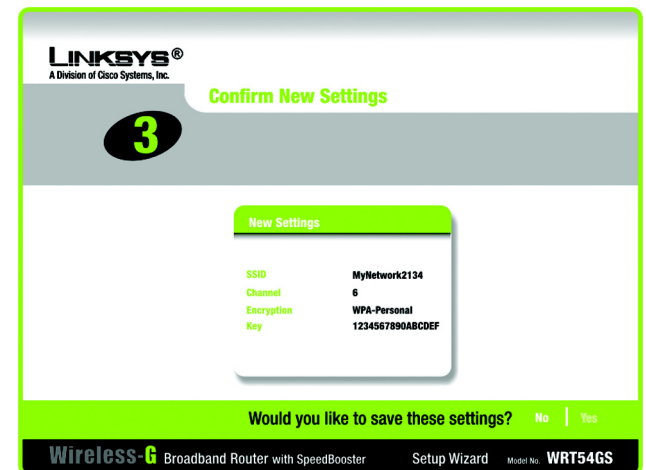


Figure 5-24: Setup Wizard's Confirm New Settings Screen

4. After the settings have been saved, the *Safe Surfing* screen will appear. Click the **Norton Internet Security Suite** button to install the special edition of Norton Internet Security on your computer, or click the **Finish** button to complete the Setup Wizard.

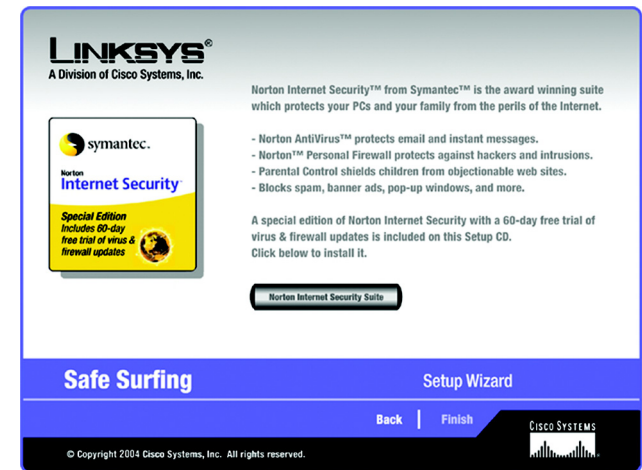


Figure 5-25: Setup Wizard's Safe Surfing Screen

5. The *Congratulations* screen will appear. Click the **Online Registration** button to register the Router, or click the **Exit** button to exit the Setup Wizard.

Congratulations! The installation of the Wireless-G Broadband Router with SpeedBooster is complete.

If you want to make advanced configuration changes, proceed to “Chapter 6: Configuring the Wireless-G Broadband Router with SpeedBooster.”



Figure 5-26: Setup Wizard's Congratulations Screen

Manually Configuring the Router's Wireless Settings

1. If you do not have other SecureEasySetup devices, then click the **Enter Wireless Settings Manually** button.

2. The Setup Wizard will ask you to enter the settings for your wireless network.

In the *SSID* field, enter the name of your wireless network. The SSID must be identical for all devices in the network. The default setting is **linksys** (all lowercase).



NOTE: An SSID is the network name shared by all devices in a wireless network. Your network's SSID should be unique to your network and identical for all devices within the network.

Select the operating channel for your wireless network. All of your wireless devices will use this channel to communicate.

From the *Network Mode* drop-down menu, select the wireless standards running on your network. If you have both 802.11g and 802.11b devices in your network, keep the default setting, **Mixed Mode**. If you have only 802.11g devices, select **G-Only**. If you have only 802.11b devices, select **B-Only**. If you want to disable your wireless network, select **Disable**.

Enter a name for the Router in the *Device Name* field.

Click the **Next** button to continue or the **Back** button to return to the previous screen.

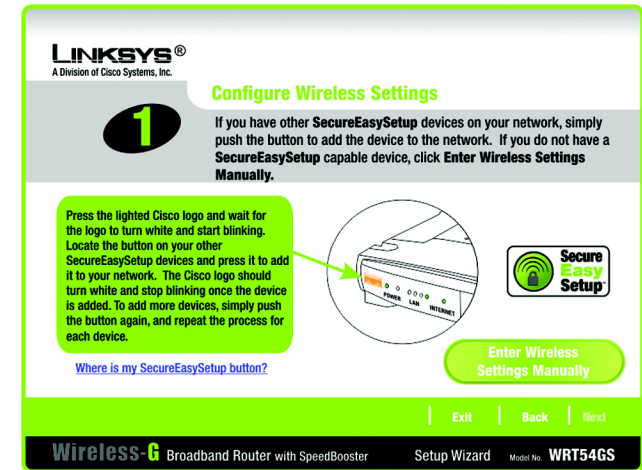


Figure 5-27: Setup Wizard's Configure Wireless Settings Screen

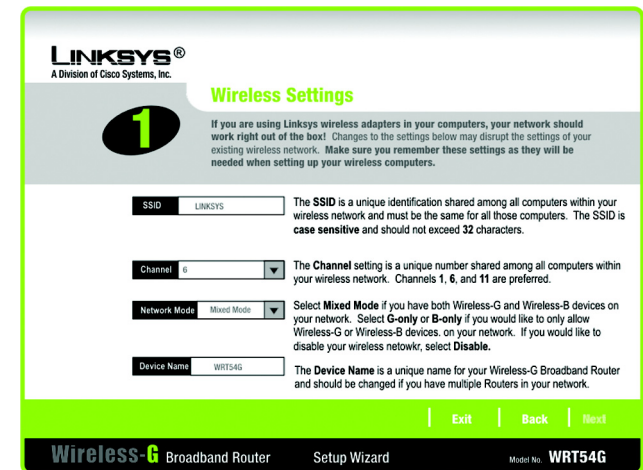


Figure 5-28: Setup Wizard's Wireless Settings Screen

3. Select the method of security you want to use: **WPA-PSK** (also called WPA-Personal), **WEP (64-Bit)**, or **WEP (128-Bit)**. WPA stands for Wi-Fi Protected Access, and WEP stands for Wired Equivalent Privacy. WPA is a stronger security method than WEP. Proceed to the appropriate section for your security method.

If you want to use WPA-RADIUS (also called WPA-Enterprise), then you should select **Disabled** and use the Router's Web-based Utility to configure your wireless security settings. Click the **Next** button and proceed to step 4.

If you do not want to use any wireless security method, select **Disabled** and then click the **Next** button. Proceed to step 4.

WPA-PSK

WPA-PSK offers two encryption methods, TKIP and AES, with dynamic encryption keys. Select **TKIP** or **AES** for encryption. Then enter a Passphrase that is 8-32 characters in length.

Encryption - Select the type of algorithm you want to use, **TKIP** or **AES**, from the *Encryption* drop-down menu.

Passphrase - Enter a Passphrase, also called a pre-shared key, of 8-32 characters in the *Passphrase* field. The longer and more complex your Passphrase is, the more secure your network will be.

Click the **Next** button to continue or the **Back** button to return to the previous screen.

LINKSYS®
A Division of Cisco Systems, Inc.

2
Security

Configure Wireless Security Settings (Optional)

Wi-Fi Protected Access (WPA) allows you to use either a Pre-Shared Key (WPA-PSK) or RADIUS authentication (WPA-RADIUS). To use WPA-PSK, enter the required settings below. To use WPA-RADIUS, refer to the User Guide on the Setup CD for instructions.

Security WPA-PSK Please choose WPA-PSK, WEP (64-Bit), WEP (128-Bit) or Disabled.

Encryption TKIP Select the type of Encryption your Network uses.

Passphrase Enter the Passphrase used by your network. The passphrase can use any keyboard character and be between 8 and 32 characters in length.

Exit Back Next

Wireless-G Broadband Router with SpeedBooster Setup Wizard Model No. WRT54GS

Figure 5-29: Setup Wizard's Wireless Security - WPA-PSK Screen

wpa (*wi-fi protected access: a wireless security protocol using TKIP (Temporal Key Integrity Protocol) encryption, which can be used in conjunction with a RADIUS server.*

wep (*wired equivalent privacy: a method of encrypting network data transmitted on a wireless network for greater security.*

radius (*remote authentication dial-in user service: a protocol that uses an authentication server to control network access.*

encryption: *encoding data transmitted in a network.*

WEP (64-Bit)

Enter a passphrase or WEP key.

Passphrase - Enter a passphrase in the *Passphrase* field, so a WEP key is automatically generated. The passphrase is case-sensitive and should not be longer than 16 alphanumeric characters. It must match the passphrase of your other wireless network devices and is compatible with Linksys wireless products only. (If you have any non-Linksys wireless products, enter the WEP key manually on those products.)

WEP Key - The WEP key you enter must match the WEP key of your wireless network. For 64-bit encryption, enter exactly 10 hexadecimal characters. Valid hexadecimal characters are “0” to “9” and “A” to “F”.

Click the **Next** button to continue or the **Back** button to return to the previous screen.

WEP (128-Bit)

Enter a passphrase or WEP key.

Passphrase - Enter a passphrase in the *Passphrase* field, so a WEP key is automatically generated. The passphrase is case-sensitive and should not be longer than 16 alphanumeric characters. It must match the passphrase of your other wireless network devices and is compatible with Linksys wireless products only. (If you have any non-Linksys wireless products, enter the WEP key manually on those products.)

WEP Key - The WEP key you enter must match the WEP key of your wireless network. For 128-bit encryption, enter exactly 26 hexadecimal characters. Valid hexadecimal characters are “0” to “9” and “A” to “F”.

Click the **Next** button to continue or the **Back** button to return to the previous screen.

- The Setup Wizard will ask you to review your settings before it saves them. Click the **Yes** button if you are satisfied with your settings, or click the **No** button if you do not want to save your new settings.

LINKSYS®
A Division of Cisco Systems, Inc.

2 **Security** **Configure Wireless Security Settings (Optional)**

You may choose between three encryption methods: 64-Bit Wired-Equivalent Privacy (WEP), 128-Bit WEP or Wi-Fi Protected Access™-Personal (WPA-PSK). The security settings must be the same on all devices on your network, or they will not be able to communicate. WPA-PSK is the strongest of the three encryption methods.

Security: WEP (64-Bit) Please choose WPA-PSK, WEP (64-Bit), WEP (128-Bit) or Disabled.

Passphrase: Type the passphrase that will be used to generate the WEP key. The passphrase is case-sensitive and should not be longer than 16 characters.

Key 1: If you choose the Passphrase option for WEP, a WEP key will generate automatically. To manually enter a WEP key, select a WEP algorithm and leave the Passphrase option blank.

Exit Back Next

Wireless-G Broadband Router with SpeedBooster Setup Wizard Model No. WRT54GS

Figure 5-30: Setup Wizard's Wireless Security - WEP (64-Bit) Screen

LINKSYS®
A Division of Cisco Systems, Inc.

3 **Confirm New Settings**

New Settings

SSID	MyNetwork2134
Channel	6
Encryption	WPA-Personal
Key	1234567890ABCDEF

Would you like to save these settings? No Yes

Wireless-G Broadband Router with SpeedBooster Setup Wizard Model No. WRT54GS

Figure 5-32: Setup Wizard's Confirm New Settings Screen

5. After the settings have been saved, the *Safe Surfing* screen will appear. Click the **Norton Internet Security Suite** button to install the special edition of Norton Internet Security on your computer, or click the **Finish** button to complete the Setup Wizard.

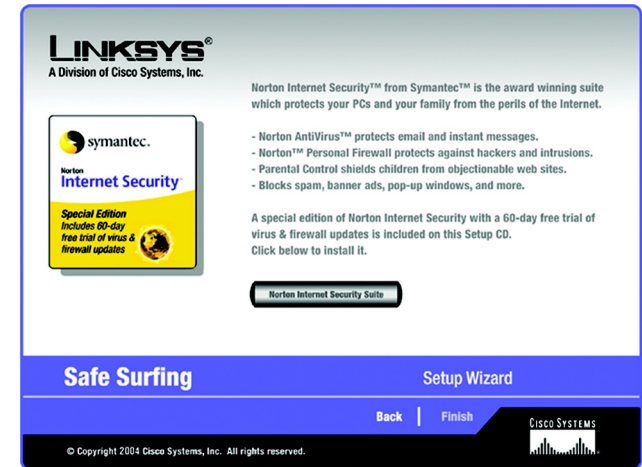


Figure 5-31: Setup Wizard's Norton Screen

6. The *Congratulations* screen will appear. Click the **Online Registration** button to register the Router, or click the **Exit** button to exit the Setup Wizard.

Congratulations! The installation of the Wireless-G Broadband Router with SpeedBooster is complete.

If you want to make advanced configuration changes, proceed to “Chapter 6: Configuring the Wireless-G Broadband Router with SpeedBooster.”



Figure 5-33: Setup Wizard's Congratulations Screen

Using SecureEasySetup to Configure Your Notebook

This section explains how to use SecureEasySetup if you have a computer displaying the SecureEasySetup logo.



NOTE: SecureEasySetup uses WPA-Personal encryption. If your current wireless devices do not support WPA-Personal security, then you cannot use SecureEasySetup on your network. You will need to manually configure your network security using the encryption supported by your existing devices.

1. After you have clicked Wireless Setup on the *Welcome* screen, the first screen that appears will describe the two steps you will take to configure your notebook. Click the **Next** button to continue.

To exit the Wireless Setup Wizard, click the **Exit** button. If you need more information, click the **Help** button.



Figure 5-34: Setup Wizard's Welcome - Start Wizard Screen



Figure 5-35: SecureEasySetup Welcome Screen