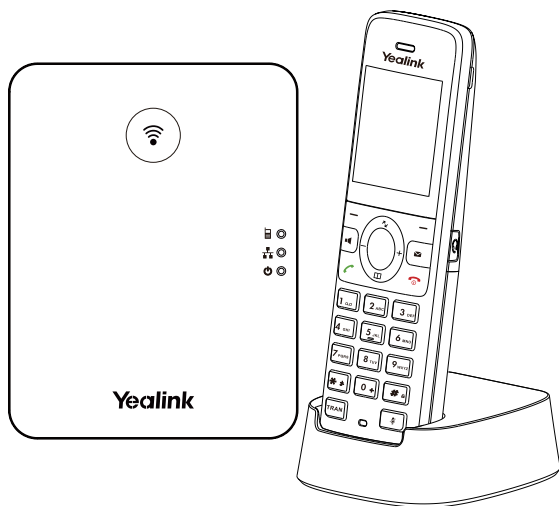




DECT IP Phone W78P&W78H

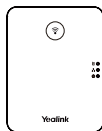


Quick Start Guide (V1.0)

W78P Package Contents



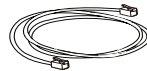
W78H
Handset



W70B Base Station 2 Power Adapters



Base Stand



Ethernet Cable



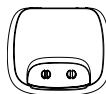
Battery Cover



Rechargeable
Battery



Belt Clip



Charging Cradle



Quick Start
Guide

Note: Yealink W78P DECT IP phone consists of one W70B base station and one W78H handset.

W78H Package Contents



W78H
Handset



Power Adapters



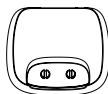
Battery Cover



Rechargeable
Battery



Belt Clip



Charging Cradle



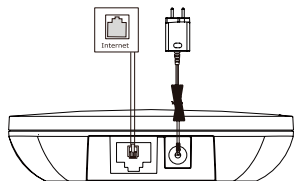
Quick Start
Guide

Note: We recommend that you use the accessories provided or approved by Yealink.
The use of unapproved third-party accessories may result in reduced performance.

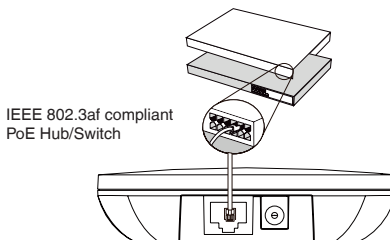
Assembling the DECT Phone

1. Connect the base station power and the network using method a or method b.

a. AC Power Option



b. PoE (Power over Ethernet) Option

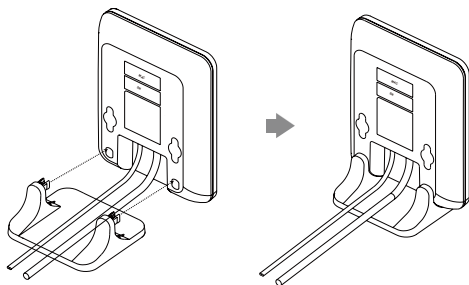


Note:

- If you choose method a, use Yealink supplied power adapter (5V/0.6A). A third-party power adapter may damage the base station.
- If you choose method b, you do not need to connect the power adapter. Make sure the hub/switch is PoE-compliant.

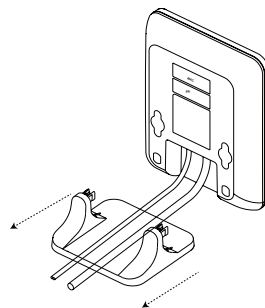
2a. (Desktop Installation) Attach and remove the base stand.

Attach the Base Stand



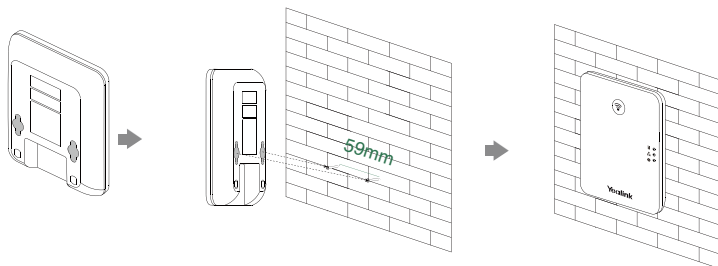
Align the snap-fits with the corresponding holes and push forward, snapping them into the holes.

Remove the Base Stand

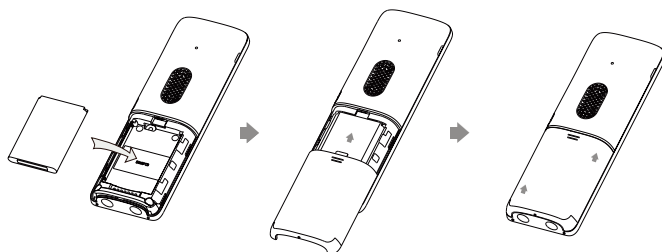


Remove the snap-fits from the holes horizontally.

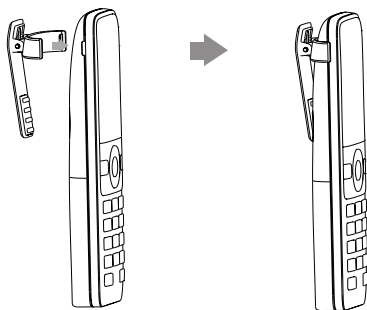
2b. (Wall-Mount Installation) Attach the base station.



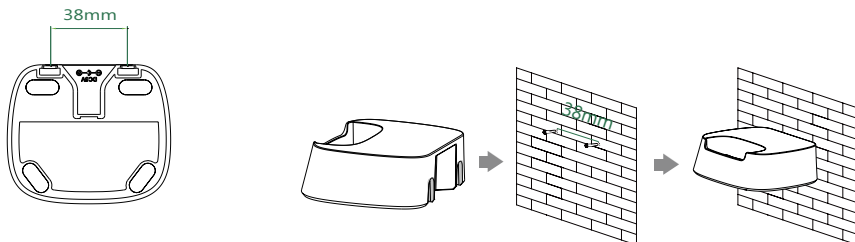
3. Insert the battery into the handset.



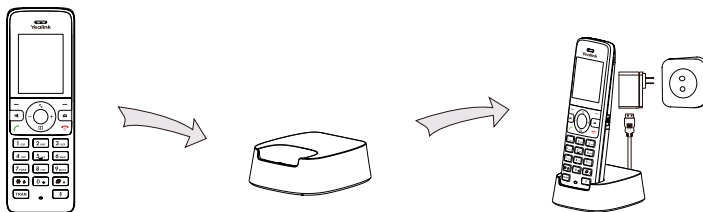
4. Attach the belt clip to the handset.



5. (Optional) Mount the charging cradle to the wall.



6. Connect the charging cradle and charge the handset.




Note:

- Use Yealink-supplied power adapter (5V/0.6A). A third-party power adapter may damage the handset.
- Check the charging status on the top-right corner of the LCD screen.

Getting Started

Handset Registration

You can register up to 8 handsets to one W70B base station. Each handset can be registered to 4 different base stations.

When the handset LCD screen prompts “Unregistered!”, long press  on the base station till the registration LED indicator flashes.

There are two methods to register a new handset:

Easy Registration:

1. Press the **Reg** soft key on the handset to register quickly.

Normal Registration:

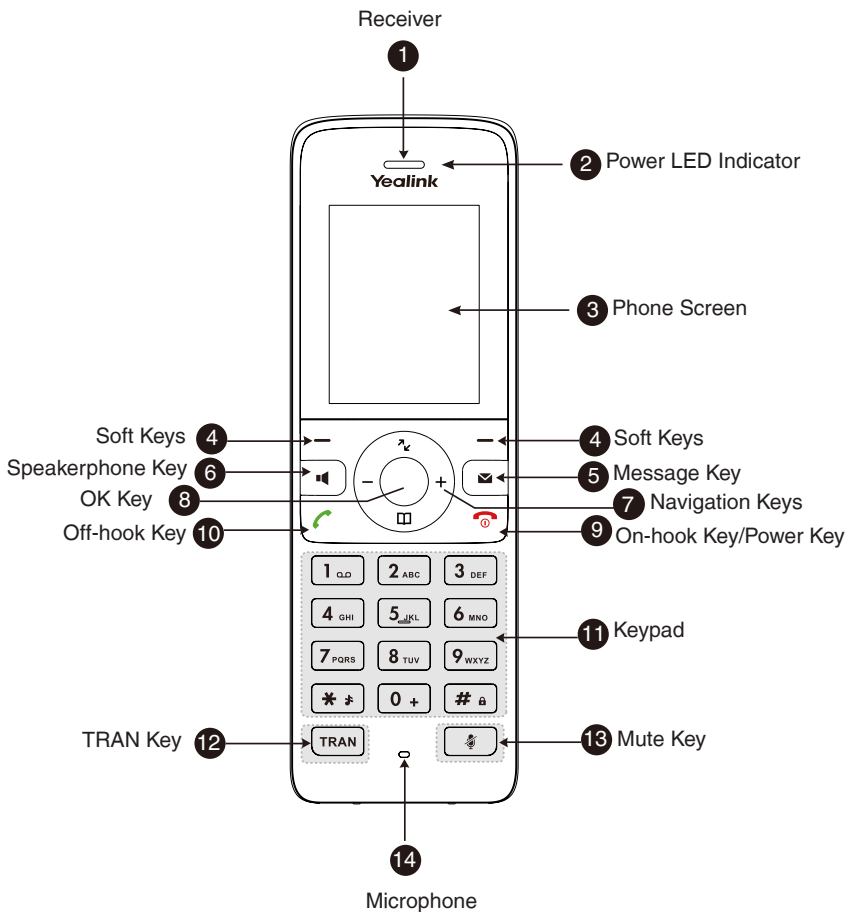
1. Press the **OK** soft key on the handset, and then select **Register Handset**.
2. Select the desired base station and then press the **OK** soft key. The handset begins searching the base station.
3. Press the **OK** soft key after searching a base station successfully.
4. Enter the base station PIN (default: 0000), and then press the **Done** soft key to complete the registration.

To register to multiple base stations, press **OK** to enter the main menu, and select **Settings->Registration->Register Handset**, then repeat steps 2-4.

Note:

- If the handset is registered to the base station successfully, the handset LCD screen prompts “Handset Subscribed” and “Base NO.”(the last 4 characters indicate the base station’s MAC address).
- If the handset LCD screen prompts “Searching for Base”, check that your base station is powered on.

Hardware Component Instructions





Declaration of Conformity

YEEALINK(XIAMEN) NETWORK TECHNOLOGY CO.,LTD
 Address: 309, 3rd Floor, No.16, Yun Ding North Road,
 Huli District, Xiamen City, Fujian, P.R. China
 CE DATE: 27th February/2022
 declare that the product
Type: DECT IP Phone
Model: W78H
 meets the essential requirements and other relevant provisions according to the following
 EC directive
Directive: 2014/30/EU, 2014/53/EU, RED 2014/53/EU;
 The presumption of conformity with the essential requirement is ensure according to :
 Article 3.1 a : (protection of the health & the safety of the user)
 Safety: EN 62368-1:2014+A11:2017
 SAR: ETSI EN 62479:2010
 Article 3.1 b : (protection requirement with respect to electromagnetic compatibility)
 EMC: EN55032:2015/AC:2016, EN55035:2017,
 EN301489-4 V2.2.1, EN301489-1 V2.2.3, EN301489-17 V3.2.2
 Article 3.2 (effective use of the radio spectrum)
 Radio: ETSI EN 301406 V2.2.2, ETSI EN 300328 V2.2.2
Directive 2011/65/EU and (EU)2015/863 of the European Parliament and of the Council of 8 June
 2011 and 4 June 2015 on the restriction of the use of certain hazardous substances in electrical and
 electronic equipment (RoHS 2.0)
Directive 2012/19/EU of the European Parliament and of the Council of 4 July 2012 on Waste
 electrical and electronic equipment (WEEE)
Regulation (EC) No.1907/2006 of the European Parliament and of the Council of
 18 December 2006
 on Registration, Evaluation, Authorization, and Restriction of Chemicals (REACH)
 NAME: Huahu Wang
 DATE: 27th February/2022
 TITLE: Manager



Declaration of Conformity

We,
 YEEALINK(XIAMEN) NETWORK TECHNOLOGY CO.,LTD
 Address: 309, 3rd Floor, No.16, Yun Ding North Road,
 Huli District, Xiamen City, Fujian, P.R. China
 CE DATE: 27th February/2022
 declare that the product
Type: DECT IP Phone
Model: W78H
 meets the essential requirements and other relevant provisions according to the following
 EC directive
Directive: 2014/30/EU, 2014/53/EU, RED 2014/53/EU;
 The presumption of conformity with the essential requirement is ensure according to :
 Article 3.1 a : (protection of the health & the safety of the user)
 Safety: EN 62368-1:2014+A11:2017
 SAR: ETSI EN 62479:2010
 Article 3.1 b : (protection requirement with respect to electromagnetic compatibility)
 EMC: EN55032:2015/AC:2016, EN55035:2017,
 EN301489-4 V2.2.1, EN301489-1 V2.2.3, EN301489-17 V3.2.2
 Article 3.2 (effective use of the radio spectrum)
 Radio: ETSI EN 301406 V2.2.2, ETSI EN 300328 V2.2.2
Directive 2011/65/EU and (EU)2015/863 of the European Parliament and of the Council of 8 June
 2011 and 4 June 2015 on the restriction of the use of certain hazardous substances in electrical and
 electronic equipment (RoHS 2.0)
Directive 2012/19/EU of the European Parliament and of the Council of 4 July 2012 on Waste
 electrical and electronic equipment (WEEE)
Regulation (EC) No.1907/2006 of the European Parliament and of the Council of
 18 December 2006
 on Registration, Evaluation, Authorization, and Restriction of Chemicals (REACH)
 NAME: Huahu Wang
 DATE: 27th February/2022
 TITLE: Manager

Regulatory Notices

Operating Ambient Temperatures


- Operating temperature: +14 to 122°F (-10 to 50°C)
- Relative humidity: 5% to 90%, noncondensing
- Storage temperature: -22 to +158°F (-30 to 70°C)

Warranty


Our product warranty is limited only to the unit itself, when used normally in accordance with the operating instructions and the system environment. We are not liable for damage or loss resulting from the use of this product, or for any claim from a third party. We are not liable for problems with Yealink device arising from the use of this product; we are not liable for financial damages, lost profits, claims from third parties, etc., arising from the use of this product.

Explanation of the symbols

DC symbol

 is the DC voltage symbol.

WEEE Warning symbol

 To avoid the potential effects on the environment and human health as a result of the presence of hazardous substances in electrical and electronic equipment, and users of electrical and electronic equipment should understand the meaning of the crossed-out wheeled bin symbol. Do not dispose of WEEE as unsorted municipal waste and have to collect such WEEE separately.

Restriction of Hazardous Substances Directive (RoHS)

This device complies with the requirements of the EU RoHS Directive. Statements of compliance can be obtained by contacting support@yealink.com.

Safety Instructions

Save these instructions. Read these safety instructions before use!

General Requirements

- Before you install and use the device, read the safety instructions carefully and observe the situation during operation.
- During the process of storage, transportation, and operation, please always keep the device dry and clean, avoid collision and crash.
- Please attempt not to dismantle the device by yourself. In case of any discrepancy, please contact the designated maintenance center for repair.
- Please refer to the relevant laws and statutes while using the device. Legal rights of others should be respected as well.

Environmental Requirements

- Place the device at a well-ventilated place. Do not expose the device under direct sunlight.
- Keep the device dry and free of dusts.
- Do not place the device on or near any inflammable or fire-vulnerable object, such as rubber-made materials.
- Keep the device away from any heat source or bare fire, such as a candle or an electric heater.

Operating Requirements

- Do not let a child operate the device without guidance.
- Do not let a child play with the device or any accessory in case of accidental swallowing.
- Please use the accessories provided or authorized by the manufacturer only.
- The power supply of the device shall meet the requirements of the input voltage of the device. Please use the provided surge protection power socket only.
- Before plugging or unplugging any cable, make sure that your hands are completely dry.
- Do not spill liquid of any kind on the product or use the equipment near water, for example, near a bathtub, washbowl, kitchen sink, wet basement or near a swimming pool.
- During a thunderstorm, stop using the device and disconnect it from the power supply. Unplug the power plug and the Asymmetric Digital Subscriber Line (ADSL) twisted pair (the radio frequency cable) to avoid lightning strike.
- If the device is left unused for a rather long time, disconnect it from the power supply and unplug the power plug.
- When there is smoke emitted from the device, or some abnormal noise or smell, disconnect the device from the power supply, and unplug the power plug immediately.
- Contact the specified maintenance center for repair.
- Do not insert any object into equipment slots that is not part of the product or auxiliary product.
- Before connecting a cable, connect the grounding cable of the device first. Do not disconnect the grounding cable until you disconnect all other cables.

About Yealink

Yealink (Stock Code: 300628) is a global brand that specializes in video conferencing, voice communications and collaboration solutions with best-in-class quality, innovative technology and user-friendly experience. As one of the best providers in more than 140 countries and regions, Yealink ranks No.1 in the global market share of SIP phone shipments (Global IP Desktop Phone Growth Excellence Leadership Award Report, Frost & Sullivan, 2019).

Technical Support

Visit Yealink WIKI (<http://support.yealink.com/>) for firmware downloads, product documents, FAQ, and more. For better service, we sincerely recommend you to use Yealink Ticketing system (<https://ticket.yealink.com/>) to submit all your technical issues.



430104001922



Battery Requirements

- Do not immerse the battery into water, which could short-circuit and damage the battery.
- Do not expose the battery to an open flame or leave the battery where it could be subjected to extremely high temperatures, which could cause the battery to explode.
- Do power the handset off before removing the battery.
- Do not try to use the battery for the power supply of any device other than this handset.
- Do not open or mutilate the battery, released electrolyte is corrosive and may cause damage to your eyes or skin.
- Use only the rechargeable battery pack delivered with the handset or those rechargeable battery packs expressly recommended by Yealink.
- Defective or exhausted battery should never be disposed of as municipal waste. Return old battery to the battery supplier, a licensed battery dealer or a designated collection facility.



Cleaning Requirements

- Before cleaning the device, disconnect it from the power supply.
- Use a piece of soft, dry and anti-static cloth to clean the device.
- Keep the power plug clean and dry.

Troubleshooting

The unit cannot supply power to Yealink device.

There is a bad connection with the plug.

1. Clean the plug with a dry cloth.
 2. Connect it to another wall outlet.
- The usage environment is out of operating temperature range.

1. Use in the operating temperature range.

The cable between the unit and the Yealink device is connected incorrectly.

1. Connect the cable correctly.
 2. You cannot connect the cable properly.
 1. You may have connected a wrong Yealink device.
 2. Use the correct power supply.
- Some dust, etc., may be in the port.

1. Clean the port.

Contact your dealer or authorized service facility for any further questions.

FCC Statement

This device complies with part 15 of the FCC Rules. Operation is subject to the following two conditions: (1) this device may not cause harmful interference, and (2) this device must accept any interference received, including interference that may cause undesired operation.

Any Changes or modifications not expressly approved by the party responsible for compliance could void the user's authority to operate the equipment.

IMPORTANT NOTE:

Note: This equipment has been tested and found to comply with the limits for a Class B digital device, pursuant to part 15 of the FCC Rules. These limits are designed to provide reasonable protection against harmful interference in a residential installation. This equipment generates, uses and can radiate radio frequency energy and, if not installed and used in accordance with the instructions, may cause harmful interference to radio communications. However, there is no guarantee that interference will not occur in a particular installation. If this equipment does cause harmful interference to radio or television reception, which can be determined by turning the equipment off and on, the user is encouraged to try to correct the interference by one or more of the following measures:

- Reorient or relocate the receiving antenna.
- Increase the separation between the equipment and receiver.
- Connect the equipment into an outlet on a circuit different from that to which the receiver is connected.
- Consult the dealer or an experienced radio/TV technician for help.

IC Statement

This device complies with Industry Canada's licence-exempt RSSs. Operation is subject to the following two conditions:

- (1) this device may not cause interference; and
 - (2) this device must accept any interference, including interference that may cause undesired operation of the device. CANICES-3(B)
- Le présent appareil est conforme aux CNR d'Industrie Canada applicables aux appareils radio exempts de licence. L'exploitation est autorisée aux deux conditions suivantes :
- (1) l'appareil ne doit pas produire de brouillage;
 - (2) l'utilisateur de l'appareil doit accepter tout brouillage radioélectrique subi, même si le brouillage est susceptible d'en compromettre le fonctionnement. NMB-3(B)

Radiation Exposure Statement

For Base: This equipment complies with FCC and IC radiation exposure limits set forth for an uncontrolled environment. This equipment should be installed and operated with minimum distance 20cm between the radiator and your body.

Cet émetteur ne doit pas être Co-placé ou ne fonctionnant en même temps qu'aucune autre antenne ou émetteur. Cet équipement devrait être installé et actionné avec une distance minimum de 20 centimètres entre le radiateur et votre corps.

For Headset: The device has been tested and comply with FCC and IC SAR limits. L'appareil a été testé et est conforme aux restrictions FCC et IC SAR.

Contact Information

YEALINK NETWORK TECHNOLOGY CO., LTD.
309, 3rd Floor, No. 16, Yun Ding North Road, Huli District, Xiamen City, Fujian, P.R.C
YEALINK (EUROPE) NETWORK TECHNOLOGY B.V.
Strawinskylaan 3127, Atrium Building, 8th floor, 1077ZX Amsterdam, The Netherlands
YEALINK (USA) NETWORK TECHNOLOGY CO., LTD.
999 Peachtree Street Suite 2300, Fulton, Atlanta, GA, 30309, USA
Made in China

YEALINK(XIAMEN) NETWORK TECHNOLOGY CO.,LTD.
Web: www.yealink.com
Copyright©2021 YEALINK(XIAMEN) NETWORK
TECHNOLOGY CO.,LTD.All rights reserved.

Warning

1. This equipment complies with Part 68 of the FCC rules and the requirements adopted by the ACTA. On the bottom of this equipment is a label that contains, among other information, a product identifier in the format US: T2LIPNANW78H. If requested, this number must be provided to the telephone company.
2. A plug and jack used to connect this equipment to the premises wiring and telephone network must comply with the applicable FCC Part 68 rules and requirements adopted by the ACTA. A compliant telephone cord and modular plug is provided with this product. It is designed to be connected to a compatible modular jack that is also compliant. See installation instructions for details.
3. If this equipment [US: T2LIPNANW78H] causes harm to the telephone network, the telephone company will notify you in advance that temporary discontinuance of service may be required. But if advance notice isn't practical, the telephone company will notify the customer as soon as possible. Also, you will be advised of your right to file a complaint with the FCC if you believe it is necessary.
4. The telephone company may make changes in its facilities, equipment, operations or procedures that could affect the operation of the equipment. If this happens the telephone company will provide advance notice in order for you to make necessary modifications to maintain uninterrupted service.
5. If trouble is experienced with this equipment [US: T2LIPNANW78H], for repair or warranty information, Service can be facilitated through our office at:

U.S. Agent Company name: 888VoIP / American Technologies, LLC
Address: 611 Jamison Rd Suite 1059 Elma NY 14059 USA
Tel: 716-714-8002

If the equipment is causing harm to the telephone network, the telephone company may request that you disconnect the equipment until the problem is resolved.
6. Please follow instructions for repairing if any (e.g. battery replacement section); otherwise do not alternate or repair any parts of device except specified. For repair procedures, follow the instructions outlined under the limited warranty.
7. Connection to party line service is subject to state tariffs. Contact the state public utility commission, public service commission or corporation commission for information.
8. If your home has specially wired alarm equipment connected to the telephone line, ensure the installation of this [US: T2LIPNANW78H] does not disable your alarm equipment. If you have questions about what will disable alarm equipment, consult your telephone company or a qualified installer.
9. If the telephone company requests information on what equipment is connected to their lines, inform them of:
 - a) The ringer equivalence number [NAN]
 - b) The USOC jack required [RJ45]
 - c) Facility Interface Codes ("FIC") [N/A]
 - d) Service Order Codes ("SOC") [N/A]
 - e) The FCC Registration Number [US: T2LIPNANW78H]

10. The REN is used to determine the number of devices that may be connected to a telephone line. Excessive RENs on a telephone line may result in the devices not ringing in response to an incoming call. In most but not all areas, the sum of RENs should not exceed five (5.0). To be certain of the number of devices that may be connected to a line, as determined by the total RENs, contact the local telephone company. The REN for this product is part of the product identifier that has the format US:AAAEQ##TXXXX. The digits represented by ## are the REN without a decimal point. For this product the FCC Registration number is [US: T2LIPNANW78H] indicates the REN would be NAN.
11. We suggest the customers use a surge arrestor to protect the device.

CS03 Warning:

This product meets the applicable Innovation, Science and Economic Development Canada technical specifications.

Le présent matériel est conforme aux spécifications techniques applicables d'Innovation, Sciences et Développement économique Canada.

The Ringer Equivalence Number (REN) is an indication of the maximum number of devices allowed to be connected to a telephone interface. The termination of an interface may consist of any combination of devices subject only to the requirement that the sum of the RENs of all the devices not exceed five.

L'indice d'équivalence de la sonnerie (IES) sert à indiquer le nombre maximal de terminaux qui peuvent être raccordés à une interface téléphonique. La terminaison d'une interface peut consister en une combinaison quelconque de dispositifs, à la seule condition que la somme d'indices d'équivalence de la sonnerie de tous les dispositifs n'excède pas cinq.