

# C300 SPECIFICATION

## 1. Update Records

VERSION	Alteration	Change date	Changed by
1.0	first edition	2021-3-2	ChauveI

## 2. Application

This antenna is used to track the intelligent trash bin project.

## 3. Environmental parameters

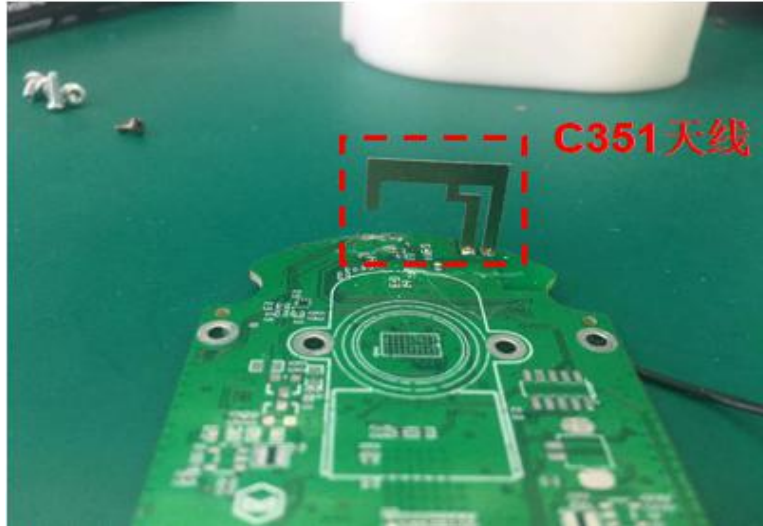
Operation temperature: -40℃~85℃

Storage temperature: -40℃~90℃

## 4. Performance specifications

Electrical parameters	
Antenna performance indicators (WiFi antenna)	
Frequency range (MHz)	2400-2500
Bandwidth (MHz)	100
Input impedance (ohms)	50
VSWR	≦2.0
Polarization mode	
Radiation efficiency	≧50%

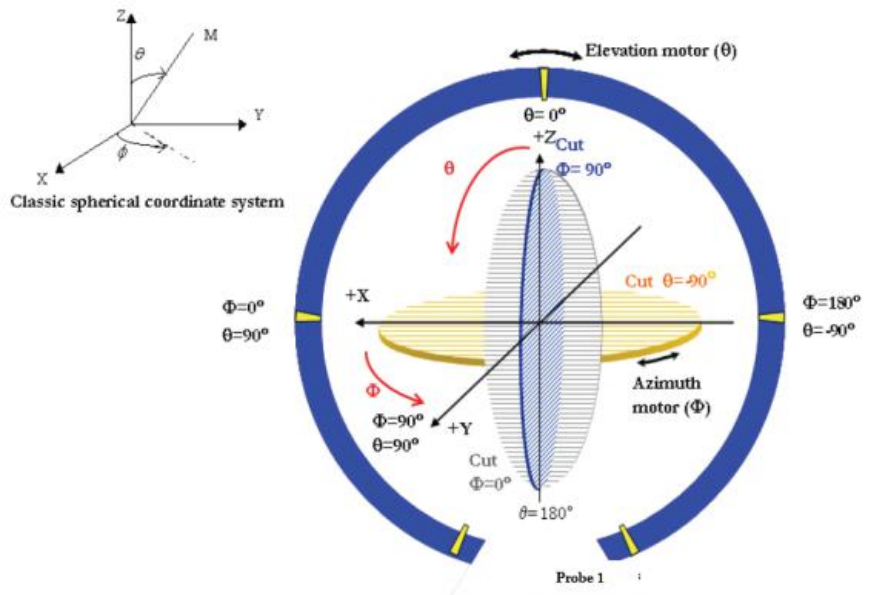
## 5. Physical drawings



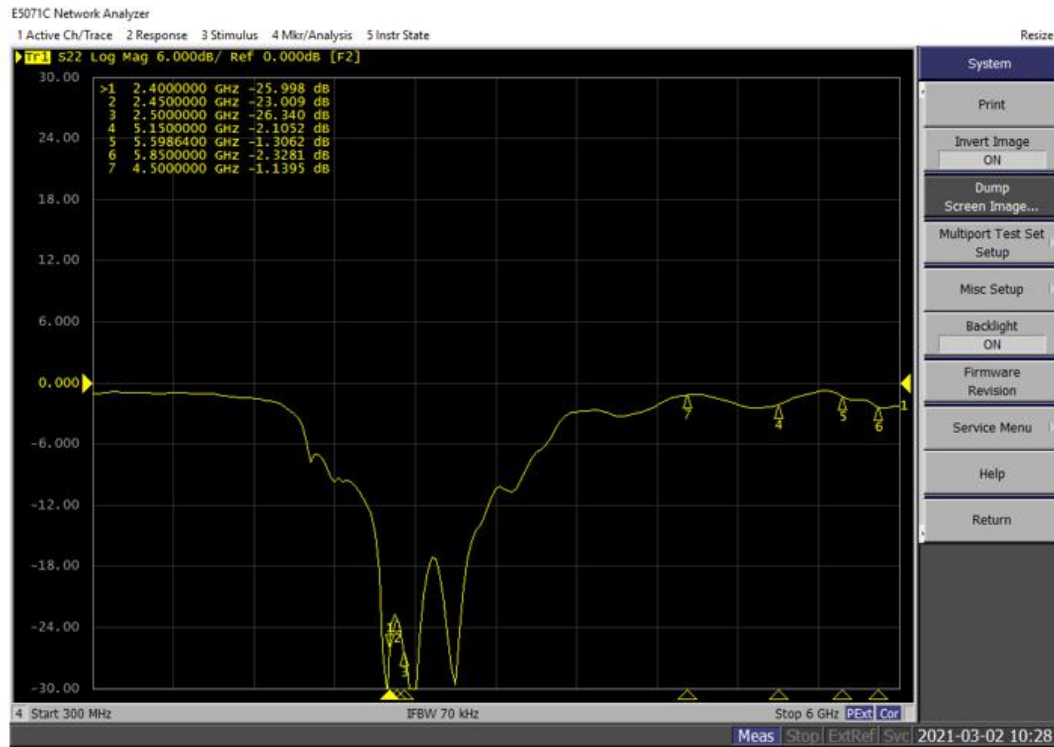
Shared C351WIFI antenna

## 6. Antenna testing environment

The antenna input characteristics were tested using the Agilent E5071C vector network analyzer. The antenna radiation characteristics are tested using a near-field microwave anechoic chamber. The test coordinate system is shown in the figure,



## 7. Antenna performance test data



Freq	Effi	Effi
(MHz)	(%)	(dBi)
2400	61.64	-2.10
2410	57.19	-2.43
2420	59.16	-2.28
2430	58.52	-2.33
2440	61.88	-2.08
2450	63.81	-1.95
2460	61.46	-2.11
2470	61.99	-2.08
2480	64.51	-1.90
2490	67.89	-1.68
2500	69.33	-1.59
mean value	62.49	-2.05

8. Antenna pattern

