

8

7

6

5

4

3

2

1

NOTES: (UNLESS OTHERWISE SPECIFIED)

1. DO NOT SCALE DRAWING.

2. COMPONENTS AND OR PARTS TO COMPLY WITH EU DIRECTIVE 2015/863 (RoHS3) & AMENDMENTS THEREOF. A STATEMENT OF COMPLIANCE MUST BE PROVIDED.

3. MATERIAL: COATED PAPER WITH PERMANENT LATEX ADHESIVE.
USE LABEL P/N: 3000021.034 OR APPROVED EQUIVALENT.

4. WHITE LABEL WITH BLACK LETTERING,

5. FINISH: PRINTED IN DENSE BLACK INK. TEXT SHALL BE SHARP AND LEGIBLE.

6. FONT: ARIAL
FONT HEIGHT: 4 POINT MINIMUM
ALIGNMENT: LEFT JUSTIFIED

7. ASSA ABLOY LOGO DEFINED BY DRAWING 4000505.004.

8. WEEE LOGO DEFINED BY DRAWING 4000505.008

9. DATES, MAC ID, S/N AND INSTALLATION NUMBERS TO BE POPULATED WITH SPECIFIC DATA AT THE TIME OF MANUFACTURING.

10. PRODUCT LEVEL LABELS ARE DESCRIBED BY DOCUMENT D000763958.

REVISIONS

ZONE	REV.	CR#	DESCRIPTION	DATE	ENG
	1	2515	INITIAL RELEASE	7/28/2022	BW

ASSA ABLOY

Model: DR100-V3

FCC ID: VC3-DR100V3 IC ID: 7160A-DR100V3

MAC ID: 00.00.00

000000-00-0.0.0000

Mr. Date: _DATE_

7.

8.

9.

9.

(.625)

(1.250)

ASSA ABLOY

Model: DR100-V3

FCC ID: VC3-DR100V3 IC ID: 7160A-DR100V3

MAC ID: 00.00.00

000000-00-0.0.0000

Mr. Date: _DATE_

7.

8.

9.

9.

(.625)

(1.250)

NOTICE TO PERSONS RECEIVING THIS DRAWING AND/OR TECHNICAL INFORMATION

The material disclosed herein is the confidential and proprietary information of Hanchett Entry Systems, Inc. (the "Company"). This drawing and/or technical information is issued in confidence for engineering information only and may not be reproduced or used to manufacture anything, including the items shown or referred to hereon, without direct written permission from the Company. This drawing and/or technical information is the property of the Company and is loaned for mutual assistance to be returned when its purpose has been served or upon the request of the Company.

UNLESS OTHERWISE SPECIFIED TOLERANCES

X.X ± .03

X.XX ± .01

X.XXX ± .005

ANGLES ± 1°

FRACTIONS ± 1/64

INTERPRET PER ASME Y14.5 - 2009

INCH

THIRD ANGLE PROJECTION

MATERIAL SEE NOTES

HEAT TREATMENT N/A

SURFACE/FINISH N/A

MASS N/A

VOLUME N/A

SURFACE AREA N/A in²

LABEL: APERIO V3 WIRELESS READER

DATE CREATED 07/28/2022

DRAWN BY BW

DESIGNED BY BW

DOCUMENT ID D001354447-001

DRAWING NUMBER (ALT ID) 5080021.025

SIZE B

REV 1

ASSA ABLOY

Hanchett Entry Systems, Inc.

Phoenix, AZ

Work In Progress

CONFIGURATION Default

LEGACY ID

SHEET 1 OF 1

NOTES: (UNLESS OTHERWISE SPECIFIED)

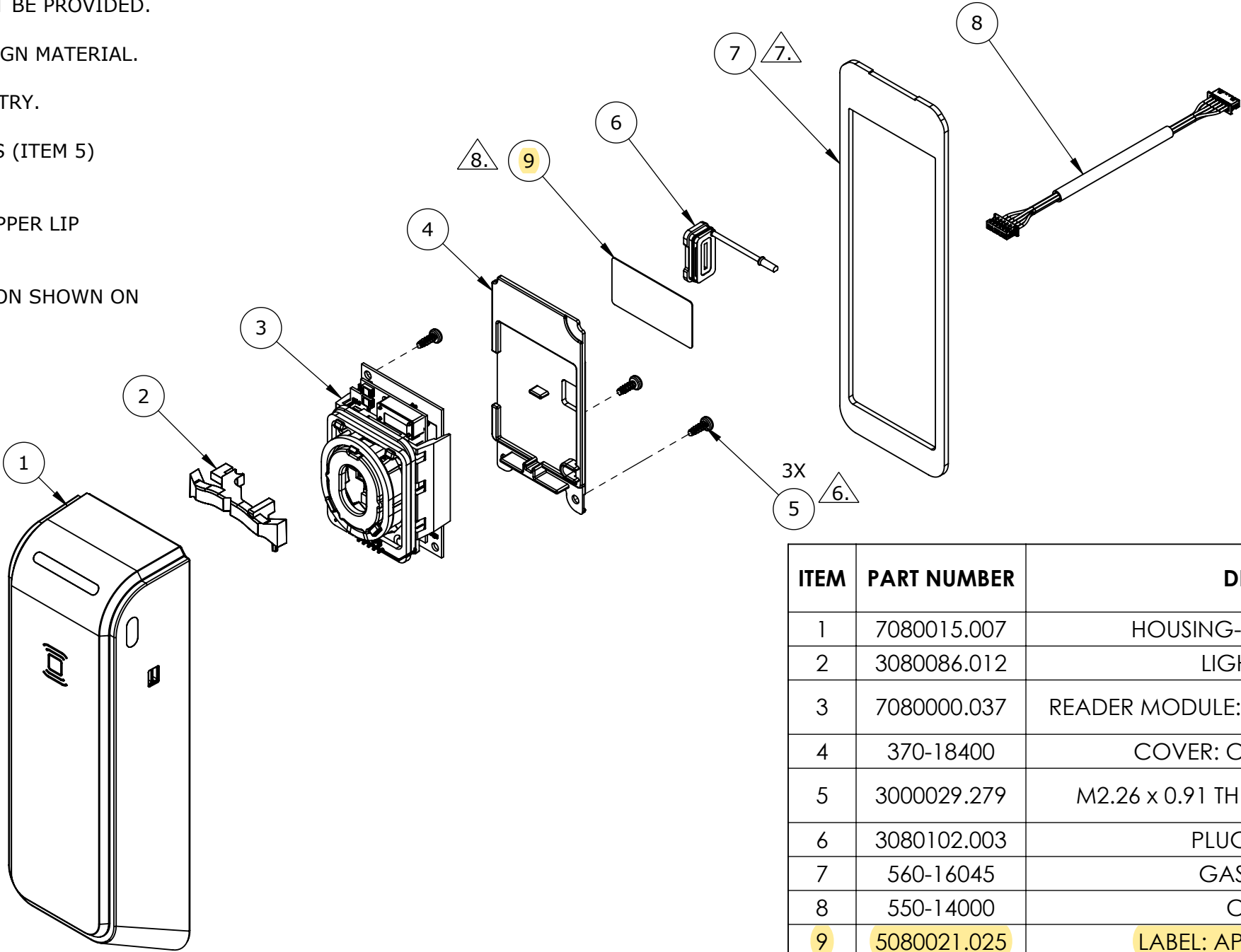
1. DO NOT SCALE DRAWING.
2. COMPONENTS AND OR PARTS TO COMPLY WITH EU DIRECTIVE 2015/863 (RoHS3) & AMENDMENTS THEREOF. A STATEMENT OF COMPLIANCE MUST BE PROVIDED.
3. MATERIAL AND PROCESS CERTIFICATE MUST BE PROVIDED.
4. PARTS SHALL BE CLEAN AND FREE OF FOREIGN MATERIAL.
5. USE CAD DATA TO REFERENCE PART GEOMETRY.

6.

USE 3.2±.25 IN-LB OF TORQUE FOR SCREWS (ITEM 5) WHICH SECURE THE MODULE.
7.

SLIDE GASKET (ITEM 7) UNDER HOUSING UPPER LIP (ITEM 1) AS SHOWN ON SHEET 2.
8.

INSTALL LABEL (ITEM 9) SHOWN IN LOCATION SHOWN ON SHEET 3.



ITEM	PART NUMBER	DESCRIPTION/NAME	QTY
1	7080015.007	HOUSING-VENT ASSY: R100 V3 BLACK	1
2	3080086.012	LIGHT PIPE: SIDE R100 V3	1
3	7080000.037	READER MODULE: APERIO V3 BLE (NON POPULATED)	1
4	370-18400	COVER: CARRIER MODULE (R100 V3)	1
5	3000029.279	M2.26 x 0.91 THREAD 6MM SSTHREAD-FORMING	3
6	3080102.003	PLUG: USB R100 V3 BLACK	1
7	560-16045	GASKET (DR100) READER	1
8	550-14000	CABLE ASSY: DR100	1
9	5080021.025	LABEL: APERIO V3 WIRELESS READER	1

NOTICE TO PERSONS RECEIVING THIS DRAWING AND/OR TECHNICAL INFORMATION
The material disclosed herein is the confidential and proprietary information of Hanchett Entry Systems, Inc. (the "Company"). This drawing and/or technical information is issued in confidence for engineering information only and may not be reproduced or used to manufacture anything, including the items shown or referred to hereon, without direct written permission from the Company. This drawing and/or technical information is the property of the Company and is loaned for mutual assistance to be returned when its purpose has been served or upon the request of the Company.

UNLESS OTHERWISE SPECIFIED TOLERANCES
X.X ± .03
X.XX ± .01
X.XXX ± .005
ANGLES ± 1°
FRACTIONS ± 1/64

ASSA ABLOY
Hanchett Entry Systems, Inc.
Phoenix, AZ

INTERPRET PER
ASME Y14.5 - 2009

INCH
[MM]

THIRD ANGLE
PROJECTION

MATERIAL
SEE BOM

HEAT TREATMENT
N/A

SURFACE/FINISH
N/A

MASS
N/A

VOLUME
N/A

SURFACE AREA
N/A

SUB-ASSY: DR100 (READER)

DATE CREATED
01/26/2022

DRAWN BY
O. CASTILLO

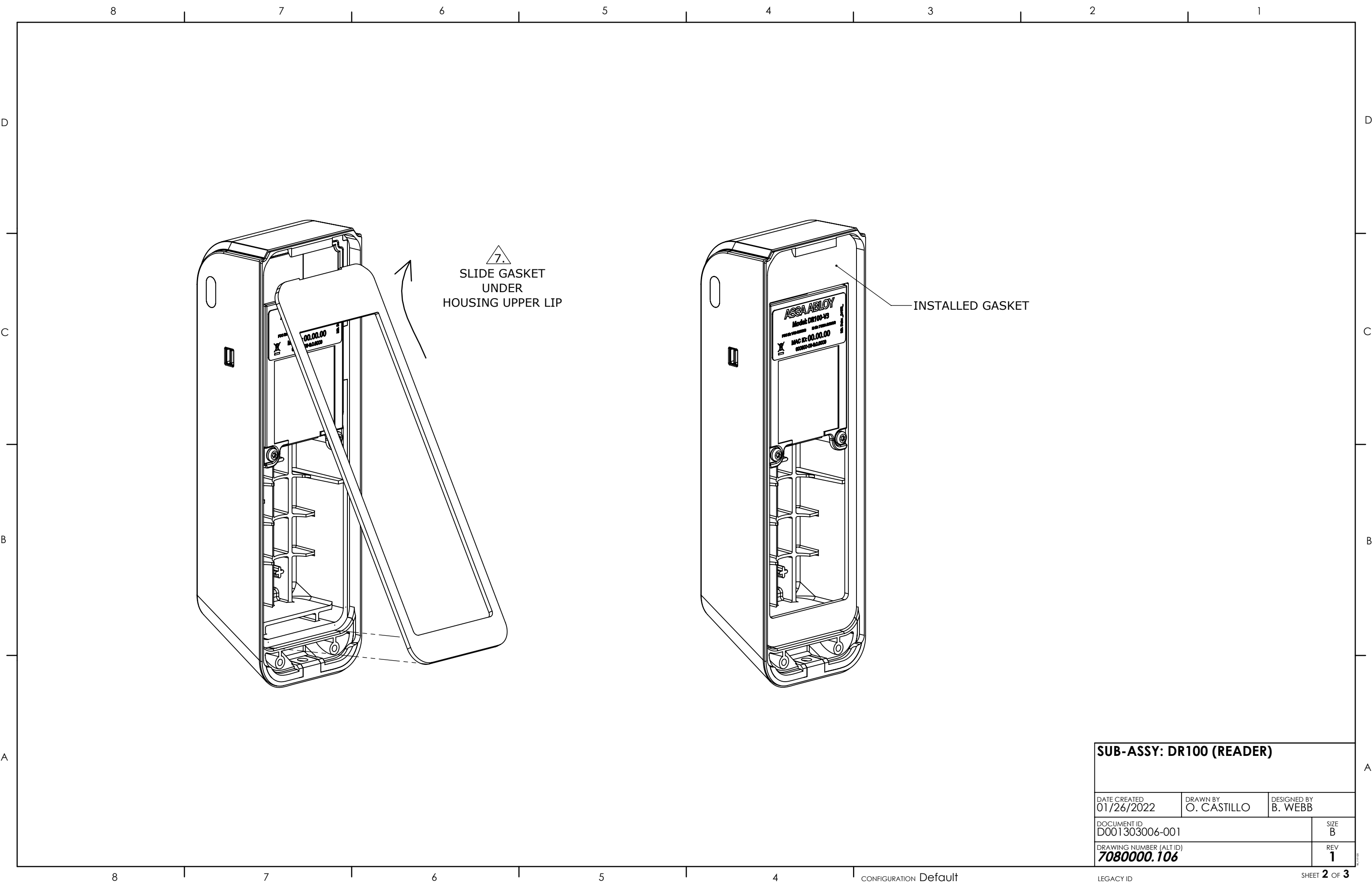
DESIGNED BY
B. WEBB

DOCUMENT ID
D001303006-001

DRAWING NUMBER (ALT ID)
7080000.106

SIZE
B

REV
1



SUB-ASSY: DR100 (READER)

DATE CREATED 01/26/2022	DRAWN BY O. CASTILLO	DESIGNED BY B. WEBB
----------------------------	-------------------------	------------------------

DOCUMENT ID D001303006-001	SIZE B
-------------------------------	-----------

DRAWING NUMBER (ALT ID) 7080000.106	REV 1
---	-----------------

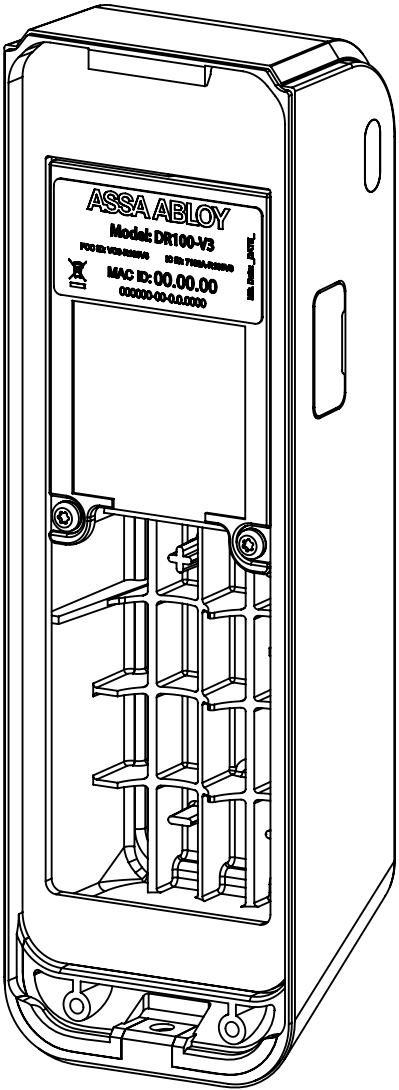
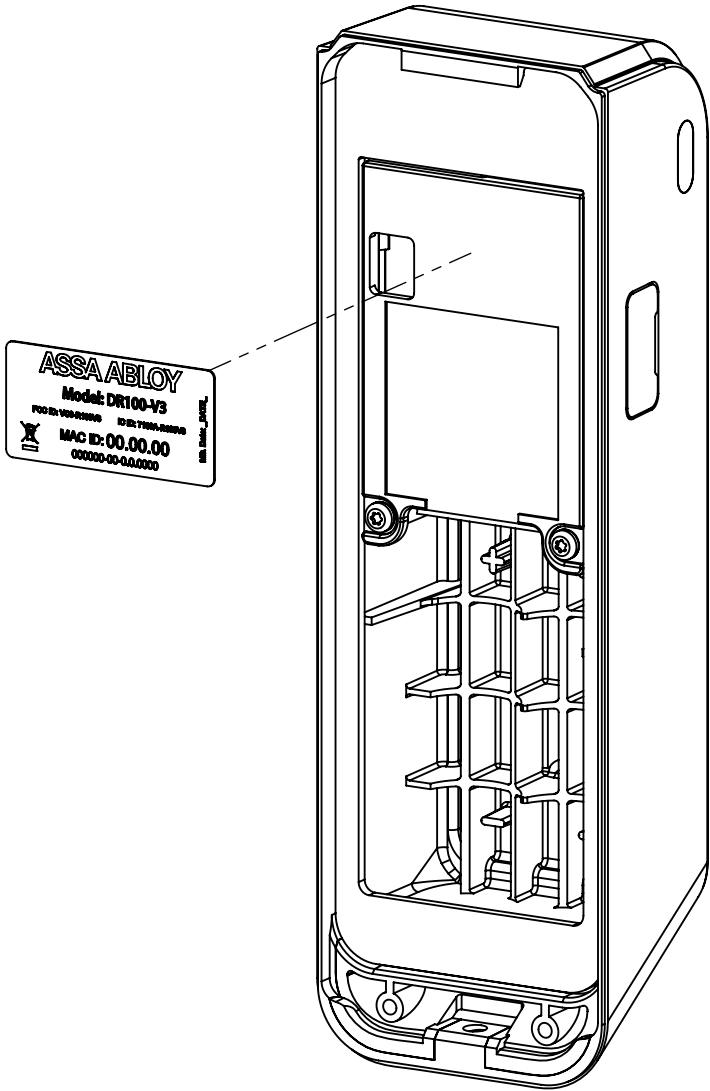
8 7 6 5 4 3 2 1

D

C

B

A



D

C

B

A

SUB-ASSY: DR100 (READER)

DATE CREATED 01/26/2022	DRAWN BY O. CASTILLO	DESIGNED BY B. WEBB
----------------------------	-------------------------	------------------------

DOCUMENT ID D001303006-001	SIZE B
-------------------------------	-----------

DRAWING NUMBER (ALT ID) 7080000.106	REV 1
---	-----------------

REVISED