

Appendix B

2.4G Ant1
2.4G Ant2

Device Under Test Properties

Model	Dimensions [mm]	IMEI
M71R2	50.0 x 30.0 x 23.0	

Exposure Conditions

Phantom Section, TSL	Position, Test Distance [mm]	Band	Group, UID	Frequency [MHz], Channel Number	TSL Conductivity [S/m]	TSL Permittivity
Flat, HSL	FRONT, 0.00	ISM 2.4 GHz Band	Bluetooth, 10670-AAA	2440.000, 19	1.83	39.6

Hardware Setup

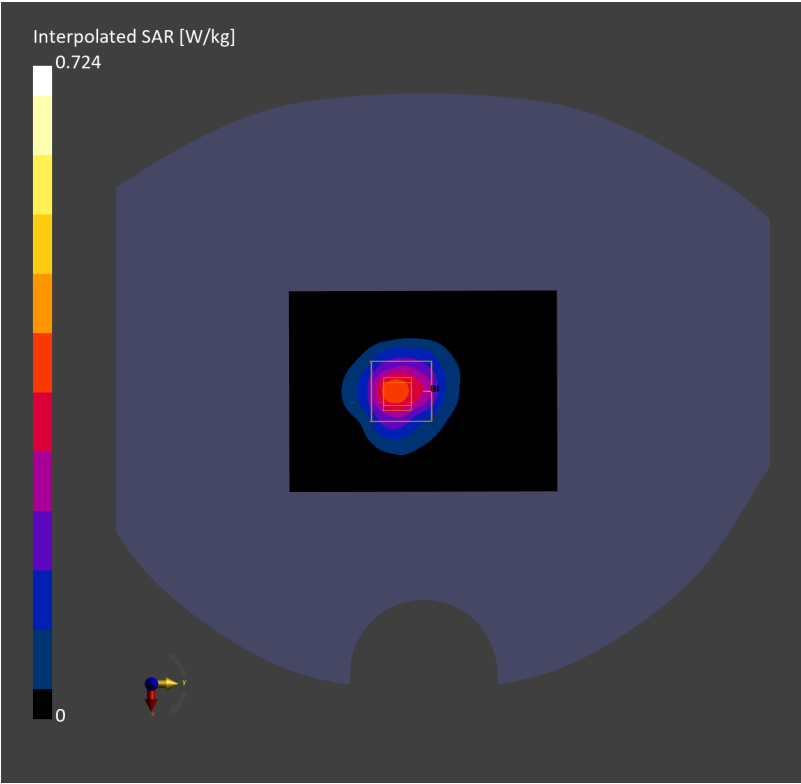
Phantom	TSL	Probe, Calibration Date	DAE, Calibration Date
Twin-SAM V8.0 (30deg probe tilt) – 2168	HSL2450	EX3DV4 – SN7812, 2024-06-25	DAE4ip Sn1846, 2024-12-10

Scans Setup

	Area Scan	Zoom Scan
Grid Extents [mm]	72.0 x 96.0	30.0 x 30.0 x 30.0
Grid Steps [mm]	12.0 x 12.0	5.0 x 5.0 x 5.0
Sensor Surface [mm]	3.0	1.4
Graded Grid	N/A	Yes
Grading Ratio	N/A	1.5
MAIA	N/A	N/A
Surface Detection	VMS + 6p	VMS + 6p
Scan Method	Measured	Measured

Measurement Results

	Area Scan	Zoom Scan
Date	2025-01-03, 04:49	2025-01-03, 04:55
psSAR1g [W/Kg]	0.316	0.327
psSAR10g [W/Kg]	0.143	0.144
Power Drift [dB]	0.00	-0.01
Power Scaling	Disabled	Disabled
Scaling Factor [dB]		
TSL Correction	No correction	No correction
M2/M1 [%]		41.5
Dist 3dB Peak [mm]		9.0



Device Under Test Properties

Model	Dimensions [mm]	IMEI
M71R2	50.0 x 30.0 x 23.0	

Exposure Conditions

Phantom Section, TSL	Position, Test Distance [mm]	Band	Group, UID	Frequency [MHz], Channel Number	TSL Conductivity [S/m]	TSL Permittivity
Flat, HSL	EDGE RIGHT, 0.00	ISM 2.4 GHz Band	Bluetooth, 10670-AAA	2440.000, 19	1.83	39.6

Hardware Setup

Phantom	TSL	Probe, Calibration Date	DAE, Calibration Date
Twin-SAM V8.0 (30deg probe tilt) – 2168	HSL2450	EX3DV4 – SN7812, 2024-06-25	DAE4ip Sn1846, 2024-12-10

Scans Setup

	Area Scan	Zoom Scan
Grid Extents [mm]	72.0 x 96.0	30.0 x 30.0 x 30.0
Grid Steps [mm]	12.0 x 12.0	5.0 x 5.0 x 5.0
Sensor Surface [mm]	3.0	1.4
Graded Grid	N/A	Yes
Grading Ratio	N/A	1.5
MAIA	Y	N/A
Surface Detection	VMS + 6p	All points
Scan Method	Measured	Measured

Measurement Results

	Area Scan	Zoom Scan
Date	2025-01-03, 06:06	2025-01-03, 06:28
psSAR1g [W/Kg]	0.159	0.207
psSAR10g [W/Kg]	0.068	0.082
Power Drift [dB]	0.09	-0.03
Power Scaling	Disabled	Disabled
Scaling Factor [dB]		
TSL Correction	No correction	No correction
M2/M1 [%]		45.1
Dist 3dB Peak [mm]		8.0

